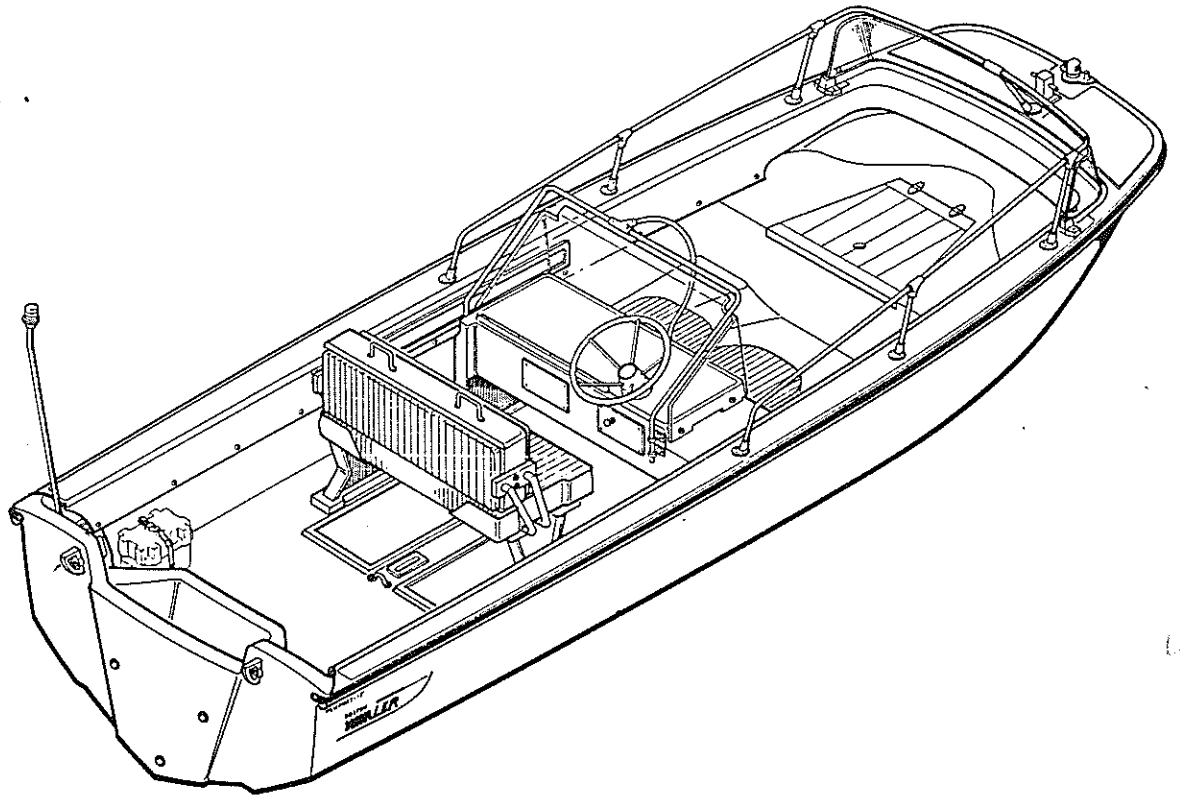


17' Newport



Det.	Part Number	Qty.	Description
1	82009900	2	Screw, #10x1"
2	82002800	24	Washer, Finish, #10
3	12656200	2	Anchor, Screw, #10
4	12227400	1	Vinyl, Rigid White, 38'
5	82136100	86	Rivet, Pop, 3/16x5/8"
6	12227500	1	Vinyl, Flex Red, 38'
7	43008800	1	Vinyl, Trim Edge, 30' (used in five locations)
8	12058700	5	Clip, Trim
9	82033700	13	Rivet, Pop, 3/16x1/2"
10	82009600	18	Screw, #10x1-1/2"
11	62115500	2	Riser, 11'
12	82061100	2	Screw, 1/4-20x1-1/2"
13	12056100	1	Bitt, Bow
14	82063900	2	Scw screw, #14x1"
15	12067100	1	Gasket
16	82035200	2	Washer, Flat, #1/4"
17	82091700	16	Washer, 13/64"
18	82076400	2	Nut, #1/4"-20
19	82322000	3	Screw, #4-40x3/4"
20	12021300 12-0084-00	1	Light, Bow
21	12022200 15-1290-00	1	Chock, Bow (Kit)
22	43001100	1	Cord, Zip (2 strand) 50'
23	12009000	1	Sleeve
24	82010300	2	Screw, #5/16-8x3"
25	12124300	1	Windshield
26	43014400	1	Channel, Deck Vinyl, 6.57'
27	12129300	2	Bracket, Windshield
28	12008900	2	O-Ring, Neoprene
29	12160800	1	Vent, Stainless Steel
30	82009800	5	Screw, #8x5/8"
31	12012900	1	Tube, Drain, 4-7/8"
32	122008800	2	Mat, Gas Can
33	12308300	1 set	Decal, B.W. Logo
34	12230200	1 set	Decal, Newport
35	12079400	1	Strap, Eye, Flat
36	22226800	1	Skin, Newport, Top
37	12425200	1	Plate, Capacity
38	82065700	4	Rivet, Pop, 1/8x1/4"

*also fits
17' Maxtrak*

U.S. COAST GUARD

MAXIMUM CAPACITIES

7 PERSONS OR 885 LBS.

100 H.P. MOTOR

THIS BOAT COMPLIES WITH U.S. COAST GUARD SAFETY STANDARDS IN EFFECT ON THE DATE OF CERTIFICATION

MANUFACTURER: **BOSTON WHALER INC.**
ROCKLAND, MASS.

MODEL: **17'**

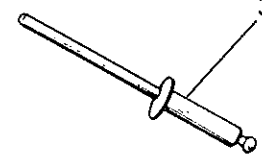
DESIGN COMPLIANCE WITH BIA REQUIREMENTS BELOW IS VERIFIED. MFG. RESPONSIBLE FOR PRODUCTION CONTROL.

LOAD AND H.P. CAPACITY • LEVEL FLOTATION
STEERING AND ELECTRICAL SYSTEMS
COMPARTMENT VENTILATION • INTERNATIONAL LIGHTS

NATIONAL MARINE MANUFACTURERS ASSN.

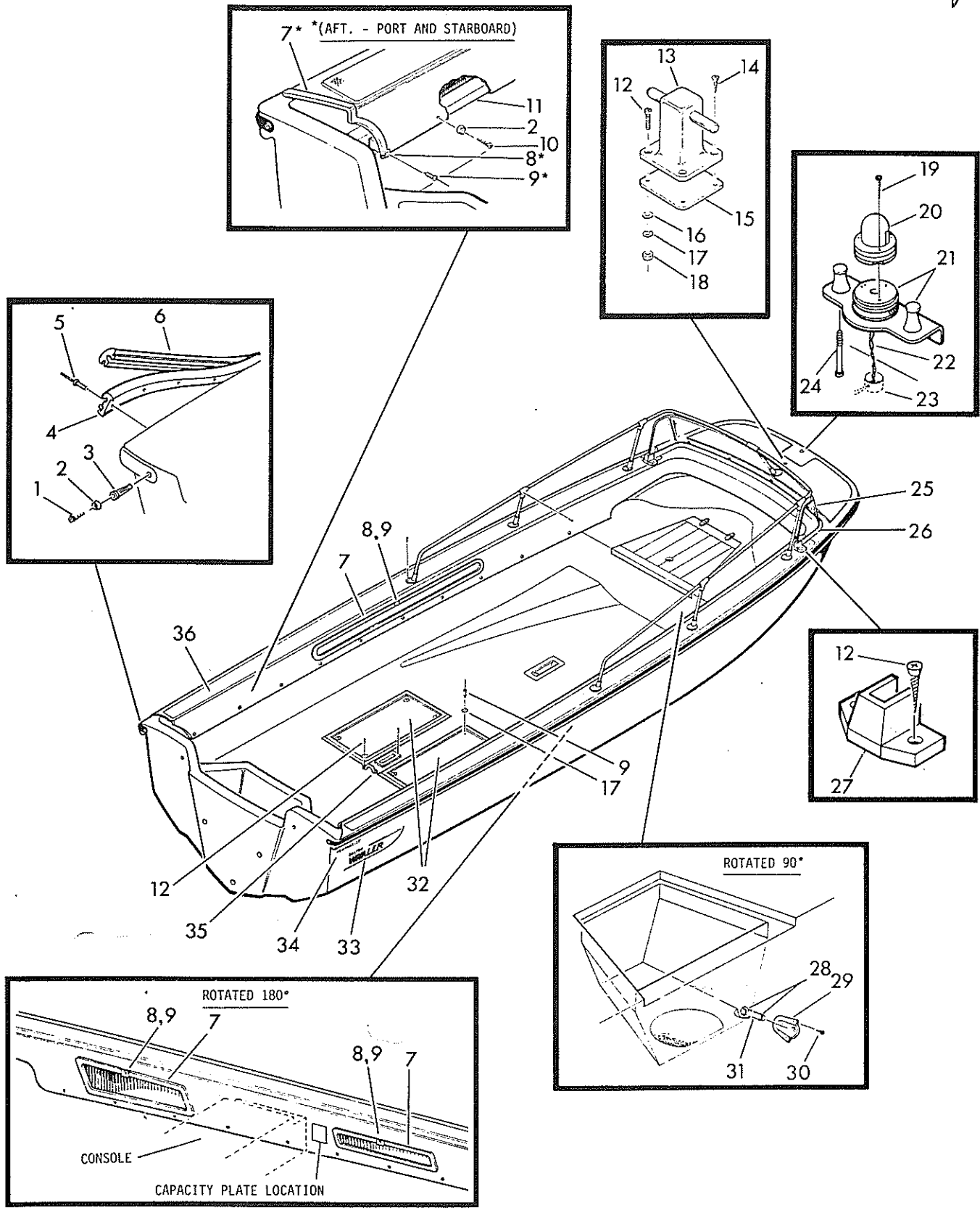
37

38

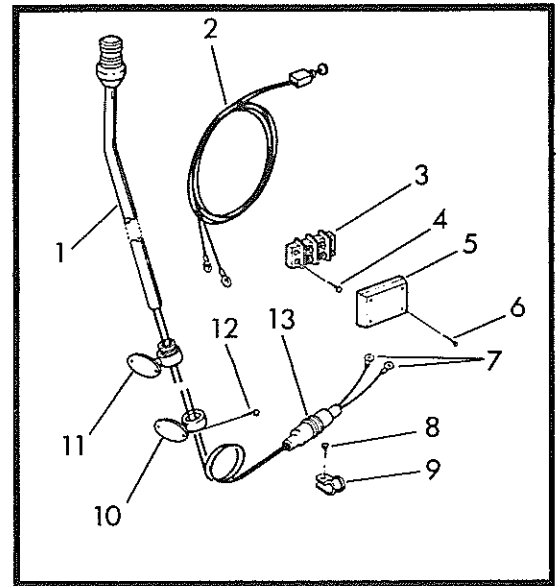


17' Newport

✓



Det.	Part Number	Qty.	Description
1	12159903	1	Light, Stern
2	12137900	1	Harness, Light Switch
3	12008500	1	Block, Terminal
4	82183200	2	Screw, #8x1"
5	12557300	1	Cover, Terminal Block
6	82557500	4	Screw, #8x1-1/4"
7	12081200	2	Terminal, Wire
8	82009800	7	#8x5/8"
9	12120600	3	Clamp
10	12007905	1	Base, Lower Support
11	12007904	1	Base, Upper Support
12	82009900	31	Screw, 10x1"
13	12007900	1	Connector
14	12-B738-00 62296400	1	Cover, Sump (Kydex)
15	82033700	1	Rivet, Pop, 3/16x1/2"
16	12058700	1	Clip, Trim
17	43008800	1	Vinyl, Trim Edge,
18	62255400	1	Cover, Bow Locker
19	82104900	8	Screw, #10x3/4"
20	12140500	1 pr.	Hinge, Strap
21	82064200	6	Nut, Acorn, #8-32
22	82016400	6	Washer, #10
23	12124500	6	Grommet
24	82124600	6	Screw, #8-32x1/2"
25	82124400	6	Bolt, Spade, #10-24
26	82114200	6	Washer
27	82114300	6	Nut
28	72124005	2	Stanchion, Aft.
29	72120402	2	Rail, Section, Side
30	82020700	32	Screw, #10-24x1/2"
31	72124004	2	Stanchion, Middle
32	72124001	1	Rail, Bow Section (includes (1) Rail Tee #72011000)
33	72124003	1	Stanchion, Forward
34	72125600	1	Base, Rail, 45
35	12255003	1	Stud, 7-5/8"
36	12017800	3	Nut, Eye, Chrome, 1/2"
37	12255200	1	Seal, Bow Eye
38	12255000	3	Head, Bow and Ski Eye
39	72019304	2	Hot Dog
40	72011000	4	Tee, Rail
41	72199200	6	Base, Grab Rail

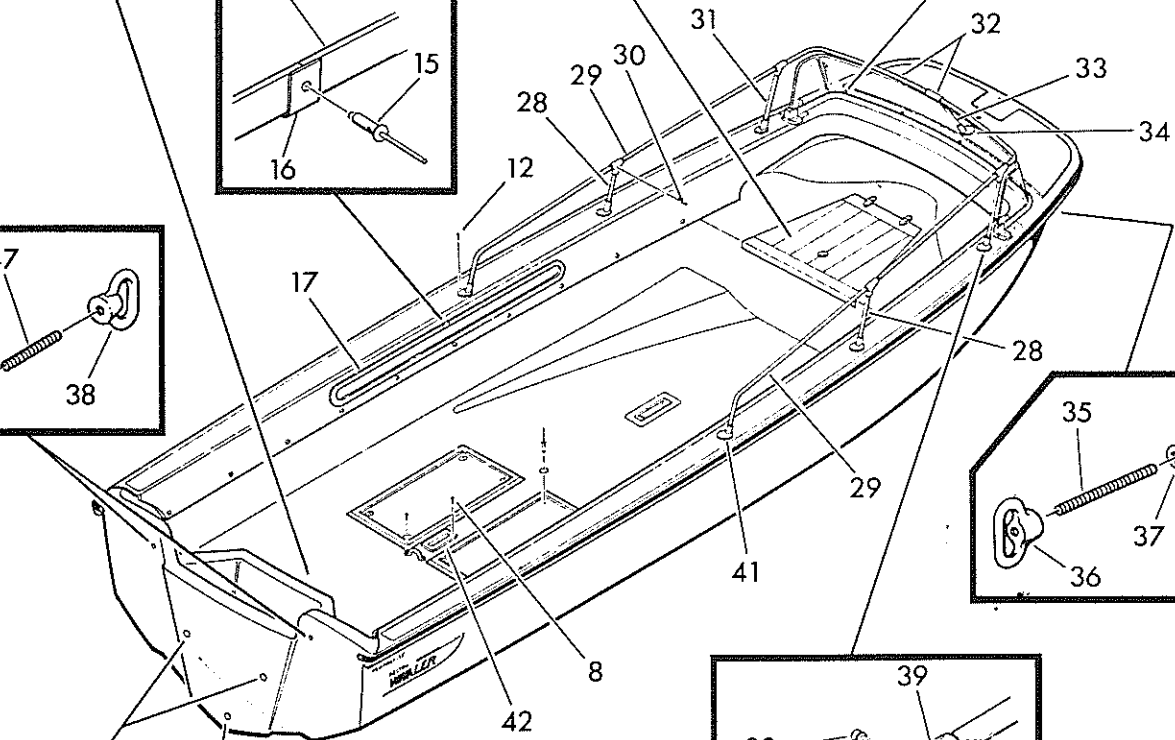
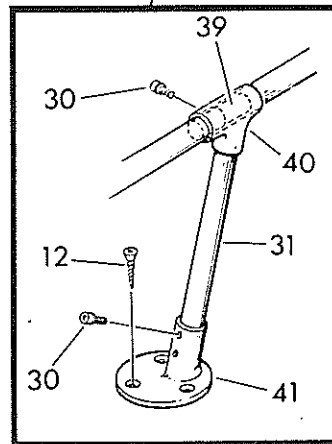
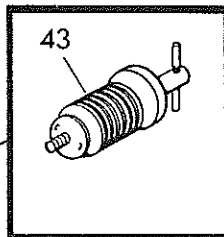
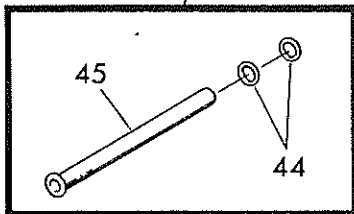
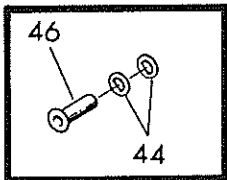
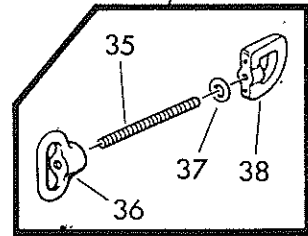
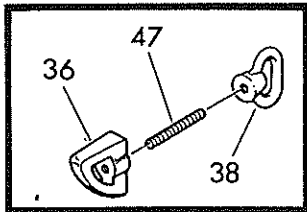
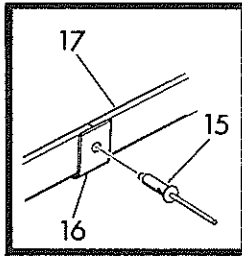
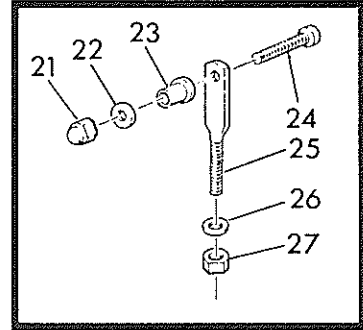
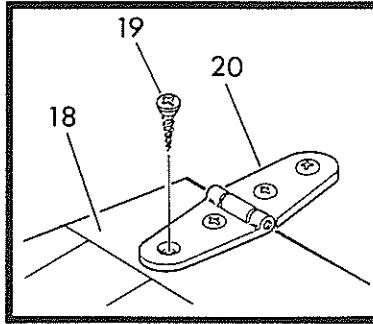
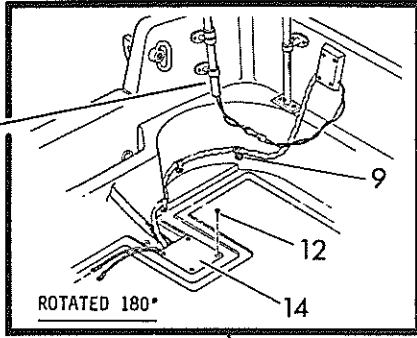


Det.	Part Number	Qty.	Description
42	12216600	1	Pipe, Hawse
43	12018100	2	Plug, Drain
44	12008900	6	O-Ring, Neoprene
45	12012800	1	Tube, Drain, 14"
46	12001900	2	Tube, Drain, 2-3/8"
47	12255002	2	Stud, 4"

Pamphlets

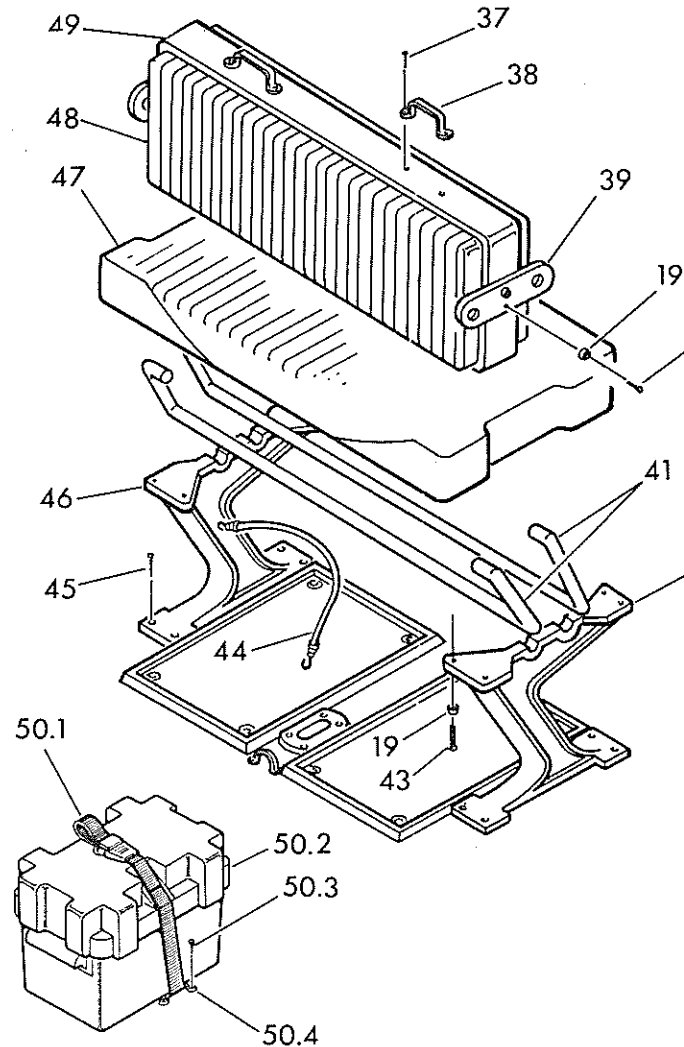
- 12316100 Boat Pamphlet
- 12448200 Boston Whaler Owner's Manual
- 15023200 Wood Locating Diagram
- 32013100 Owner's Instruction Check List
- 32013200 Owner's Instruction Envelope
- 32015400 GC290 Coast Guard Regulation Booklet

17' Newport



Det.	Part Number	Qty.	Description
1	72123800	1	Fitting, Bullet End
2	82020700	12	Screw, #10-24x1/2"
3	82114300	10	Nut, Stop, #10-24
4	82114200	10	Washer, #10x7/16"
5	72040505	4	Support, Stanchion
6	82019801	10	Screw, #10-24x1-1/2"
7	72226501	1	Tube, Main (includes (1) Tee #72040507)
8	72146202	1	Stanchion
9	72040506	1	Base, Rail
10	12172100	2	Seat, Bucket
11	82035200	16	Washer, #1/4"
12	82076200	8	Washer, Split, #1/4x062T
13	82210400	8	Screw, #1/4"-20x2"
14	12226200	1	Windshield
15	82138500	8	Nut, Well, #610-32
16	12139300	8	Bushing, Nylon
17	82002800	8	Washer, Finish, #10
18	82017600	8	Screw, #10-32x1-1/4"
19	82004500	19	Washer, Finish, #12
20	82210400	4	Screw
21	82065400	4	Screw, 1/4"-20x2"
22	62021701	1	Cleat, Starboard
23	82019700	13	Screw, #10x2-1/2"
24	12329800	1	Cable, Steering, 12'
25	12137900	1	Harness, Light Switch
26	12349100	1	Steerer, Helm, Single Cable
27	62021702	1	Cleat, Port
28	62040310	2	Panel, Dash
29	82009800	8	Screw, #8x5/8"
30	22226900	1	Console, Newport
31	62226600	1	Strip, Pencil
32	82183200	5	Screw, #8x1"
33	12507400	1	Cover, Top, Console
34	12349000	1	Bezel, 20°
35	12217500	1	Label, Warning, Pull Steering steering
36	12083800	1	Wheel, Steering, Stainless Steel (to order packaged Stainless Steering Wheel Assembly use order number #15061200)
37	82063900	8	Screw, #14x1"
38	12020400	2	Handle
39	62232300	2	Block, Pivot

Det.	Part Number	Qty.	Description
40	82092900	4	Screw, #10-24x2"
41	12099100	2	Frame, Pivot
42	12103500	1	Leg, Starboard
43	82297100	8	Screw, #1/4-20x1-3/4"
44	15060800	2	Shock Cord Assembly
45	82109300	2	Screw,
46	12103400	1	Leg, Port
47	12143900	1	Cushion, Reversible Seat
48	12227100	1	Back, Two Way Seat, Padded
49	62227200	1	Frame, Two Way Seat
50	15042800	1	Battery Box w/Holddowns (includes parts 50.1-50.4)
50.1	12354000	1	Strap, Holddown
50.2	12348700	1	Box, Battery
50.3	82009900	4	Screw, #10x1"
50.4	12354100	2	Strap, Deck
51	82150900	4	Nut, Stop, 1/4"-20



17' Newport

