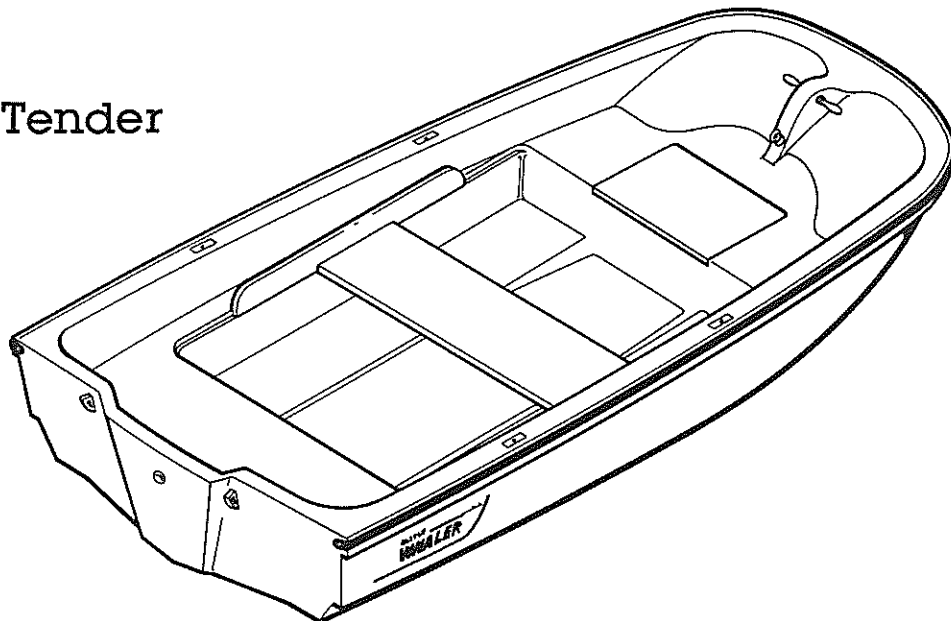


# 9' Tender, 11' Standard/Sport

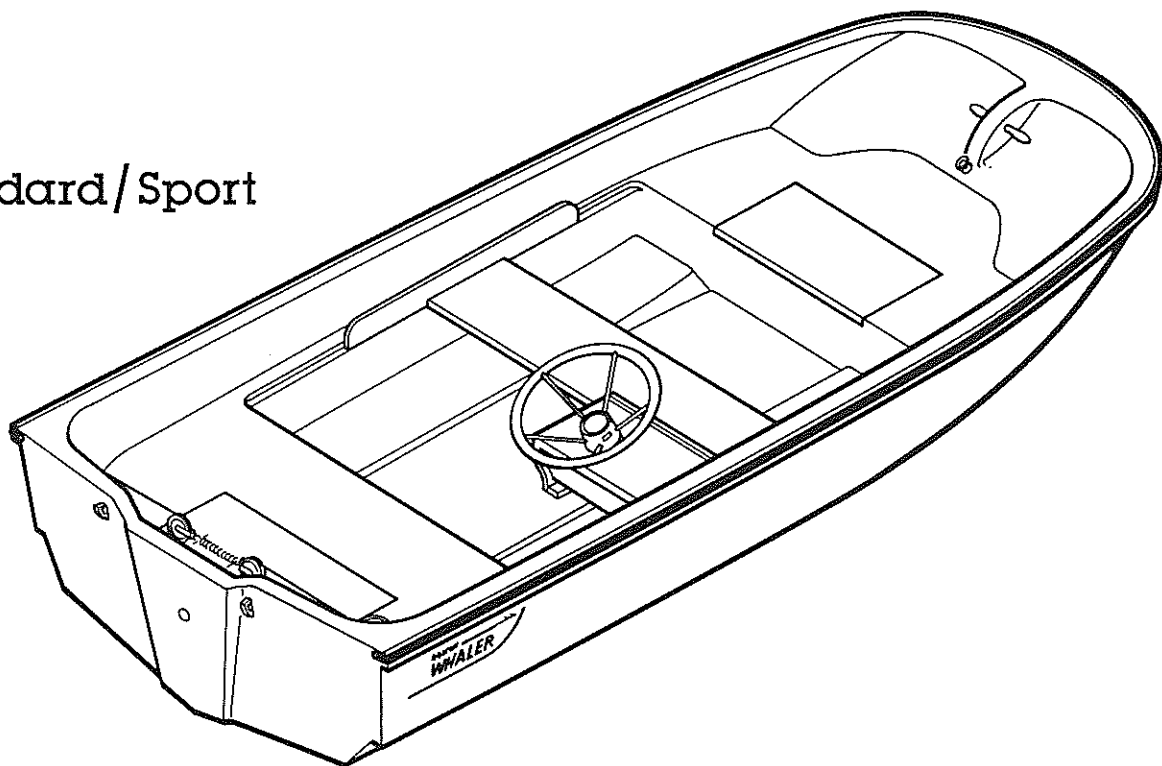
---



9' Tender



11' Standard/Sport



Det.	Part Number	Qty.	Description
1	82009900	2	Screw, #10x1"
2	82002800	10	Washer, Finishing, #10 (used on 9' Tender and 11' Standard)
	*	11	Washer, Finishing, #10 (used on 11' Sport)
3	12656200	2	Anchor Screw, #10
4	12271700	1	Vinyl, Flex White, 20'
	*12198100	1	Vinyl, Flex White, 25'
5	12271200	1	Vinyl, Rigid White, 20'
	*12197900	1	Vinyl, Rigid White, 25'
6	82136100	45	Rivet, Pop, 3/16x5/8"
	*	58	Rivet, Pop, 3/16x5/8"
7	12271300	1	Vinyl, Flex Black, 21'
	*12198000	1	Vinyl, Flex Black, 26'
8	*12000301	1	Strap, Eye
9	*82033700	2	Rivet, Pop, 3/16x1/2"
10	*15060500	1	Shock Cord Assembly
11	*15061100	1	Assembly (includes parts 11.1 - 11.3)
11.1	*82009800	2	Screw, #8x5/8"
11.2	*12000301	1	Strap, Eye
11.3	*62198400	1	Cover, Locker, Aft
12	15051210	2	Assembly (includes parts 12.1 - 12.3 for 9' Tender and 11' Standard)
	*	1	Assembly (includes parts 12.1 - 12.3 for 11' Sport)
12.1	82002700	2	Pin, #18x5/8"
12.2	12007500	2	Disc, Rubber
12.3	62198600	2	Clamp, Seat (9' Tender and 11' Standard)
	*	1	Clamp, Seat (11' Sport)
13	82002400	8	Screw, #10x2" (9' Tender and 11' Standard)
	*	9	Screw, #10x2" (11' Sport)
14	12000301	1	Strap, Eye
15	82033700	4	Rivet, Pop, 3/16x1/2"
16	15060500	1	Shock Cord Assembly
17	15061400	1	Assembly (includes parts 17.1 - 17.3)
	*15061000	1	Assembly (includes parts 17.1 - 17.3)
17.1	82009800	2	Screw, #8x5/8"
17.2	12000301	1	Strap, Eye
17.3	62271500	1	Cover, Locker, Forward
	*62198300	1	Cover, Locker, Forward
18	12001700	2	Pin, Norman
19	12001600	1	Stud, 3/8x3-7/32"
20	12155000	1	Caplug (remove this piece to gain access to Zip Cord 43001100 (not shown) 12 feet on 9' models, 14 feet on 11' models When adding Bow Light)
21	12255000	3	Head
22	12255004	1	Stud, 1/2-13x8-3/8"
	*12255001	1	Stud, 1/2-13x6-5/8"
23	12025200	1	Seal, Eye, Bow
24	12037101	3	Nut

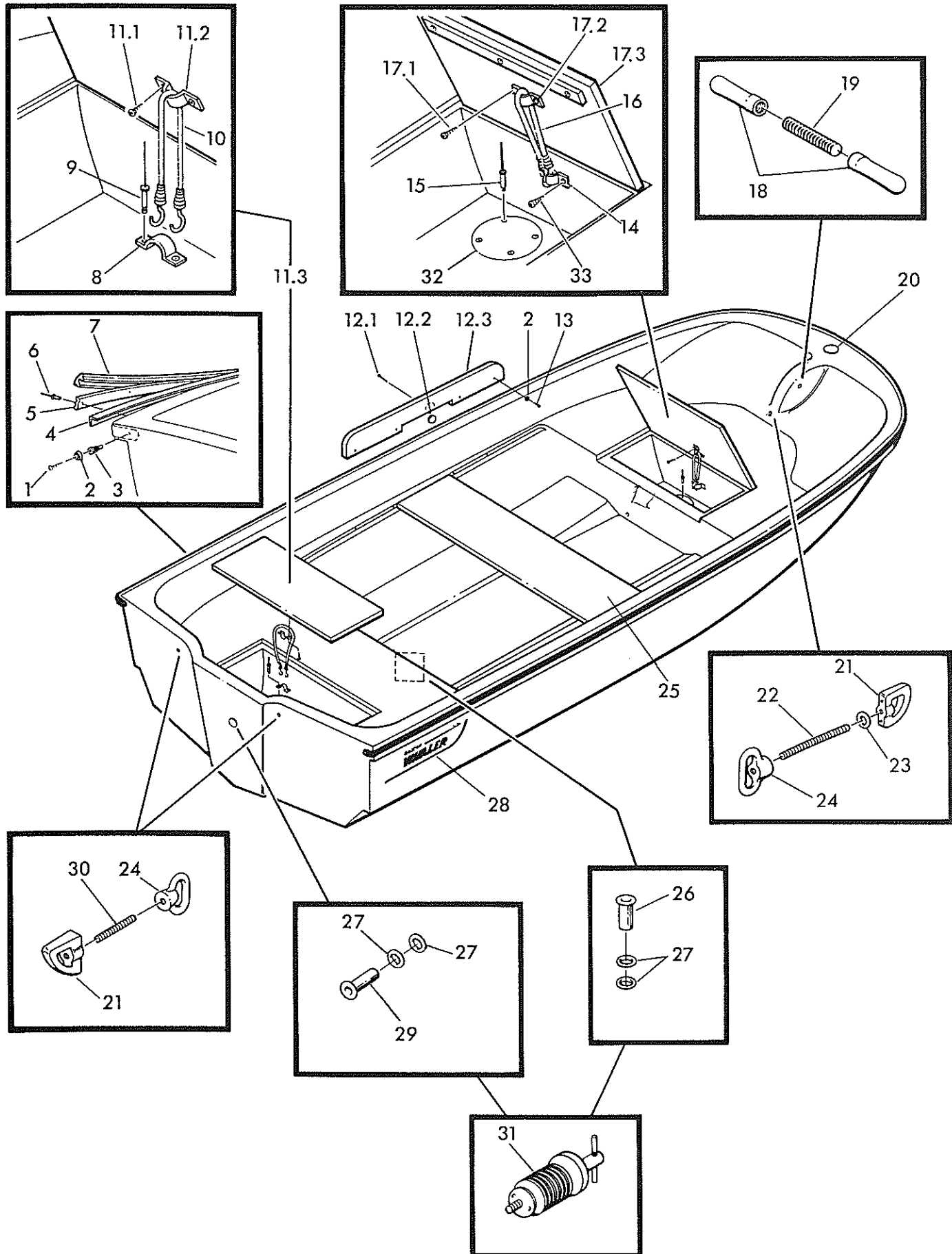
Det.	Part Number	Qty.	Description
25	62271600	1	Seat
	*62198500	1	Seat
26	12001900	1	Tube, Drain 2-5/8"
	*12271100	1	Tube, Drain 2-3/4"
27	12008900	3	O-Ring, Neoprene
	*	4	O-Ring, Neoprene
28	12014400	1	Decal
	*12335500	1	Decal
29	12001900	1	Tube, Drain 2 5/8"
30	12255002	2	Stud, 1/2-13x4"
31	12018100	1	Plug, Drain, 9' models
	*	2	Plug, Drain, 11' models
32	12201400	1	Cover, Plug
33	82009800	2	Screw, #8x5/8"

Pamphlets

12316100	Boat Pamphlet
12448200	Boston Whaler Owner's Manual
*15019600	Packing List (11' Models only)
*15024600	Wood Locating Diagram (11' Models only)
15017100	Engine Connection Instructions
15021201	Side Steering Conversion Instruction Drawing
15031600	Packing List (9' Models only)
32013100	Owner's Instruction Check List
32013200	Owner's Instruction Envelope
32015400	GC 290 Coast Guard Regulation Booklet
90000200	Wood Locating Diagram (9' Models only)

\*USED ON 11' MODEL ONLY

# 9' Tender, 11' Standard/Sport



Det.	Part Number	Qty.	Description
1	12424400	1	Label, Capacity, 9' Tender
2	82065700	4	Rivet, Pop, 1/8x1/4"
3	12424500	1	Label, Capacity, 11' Standard
4	12424600	1	Label, Capacity, 11' Sport
5	82090100	8	Screw, #10-24x2-3/4"
6	82002800	8	Washer, Finish, #10
7	12079400	5	Strap, Eye, Flat
8	82114300	8	Stopnut
9	12023700	1	Link, Lap
10	12022400	3	Pulley, Transom
11	12001000	2	Thimble
12	12000100	4	Clamp, Cable
13	15061300	1	Spring and Pulley Assembly (includes parts 13.1 - 13.3)
13.1	12022400	2	Pulley, Transom
13.2	12023700	1	Link, Lap
13.3	12016802	1	Spring, Tiller Rope
14	12083800	1	Wheel, Steering, Stainless (to order packaged Steering Wheel Assembly use order number 15061200)
15	15050800	1	Wheel Box with steerer and Cable Assembly (includes parts 15.1 - 15.4)
15.1	12000201	1	Column and Drum
15.2	12531400	1	Cable, Tiller
15.3	62227900	1	Box, Wheel
15.4	12224000	1	Caplug
16	82002400	12	Screw, #10-2"
17	82002800	12	Washer, Finish, #10
18	15051200	1	Dolphin Riser Assembly (includes parts 18.1 - 18.7)
18.1	62227800	1	Riser, Dolphin
18.2	82002700	1	Pin, #18x5/8"
18.3	12007500	1	Disc, Rubber
18.4	82018300	4	Screw, #8x3/4"
18.5	12161000	2	Pulley, Coaming
18.6	12022800	2	Guide, Tiller Rope
18.7	82009800	4	Screw, #8x5/8"
19	62005900	1	Cleat
20	12133000	1	Label

*NLA !!*  
*12-0082-04 plastic bushing*

U.S. COAST GUARD  
**MAXIMUM CAPACITIES**

**3 PERSONS OR 325 LBS**

405 LBS. PERSONS, MOTOR, GEAR  
5 H. P. MOTOR

THIS BOAT COMPLIES WITH U.S. COAST GUARD SAFETY STANDARDS IN EFFECT ON THE DATE OF CERTIFICATION

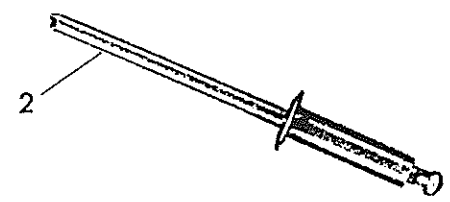
MANUFACTURER: BOSTON WHALER INC.  
MODEL: 9' TENDER ROCKLAND, MASS.

DESIGN COMPLIANCE WITH BIA REQUIREMENTS BELOW IS VERIFIED. MFG. RESPONSIBLE FOR PRODUCTION CONTROL

LOAD AND H.P. CAPACITY • LEVEL FLOTATION  
COMPARTMENT VENTILATION

BOATING INDUSTRY ASSOCIATIONS

1



U.S. COAST GUARD  
**MAXIMUM CAPACITIES**

**3 PERSONS OR 365 LBS**

560 LBS. PERSONS, MOTOR, GEAR  
10 H. P. MOTOR

THIS BOAT COMPLIES WITH U.S. COAST GUARD SAFETY STANDARDS IN EFFECT ON THE DATE OF CERTIFICATION

MANUFACTURER: BOSTON WHALER INC.  
MODEL: 11' STANDARD ROCKLAND, MASS.

DESIGN COMPLIANCE WITH BIA REQUIREMENTS BELOW IS VERIFIED. MFG. RESPONSIBLE FOR PRODUCTION CONTROL

LOAD AND H.P. CAPACITY • LEVEL FLOTATION  
COMPARTMENT VENTILATION

BOATING INDUSTRY ASSOCIATIONS

3,2

U.S. COAST GUARD  
**MAXIMUM CAPACITIES**

**3 PERSONS OR 365 LBS**

560 LBS. PERSONS, MOTOR, GEAR  
20 H. P. MOTOR

THIS BOAT COMPLIES WITH U.S. COAST GUARD SAFETY STANDARDS IN EFFECT ON THE DATE OF CERTIFICATION

MANUFACTURER: BOSTON WHALER INC.  
MODEL: 11' SPORTBOAT ROCKLAND, MASS.

DESIGN COMPLIANCE WITH BIA REQUIREMENTS BELOW IS VERIFIED. MFG. RESPONSIBLE FOR PRODUCTION CONTROL

LOAD AND H.P. CAPACITY • BASIC FLOTATION  
COMPARTMENT VENTILATION

NATIONAL MARINE MANUFACTURERS ASSN.

4,2

