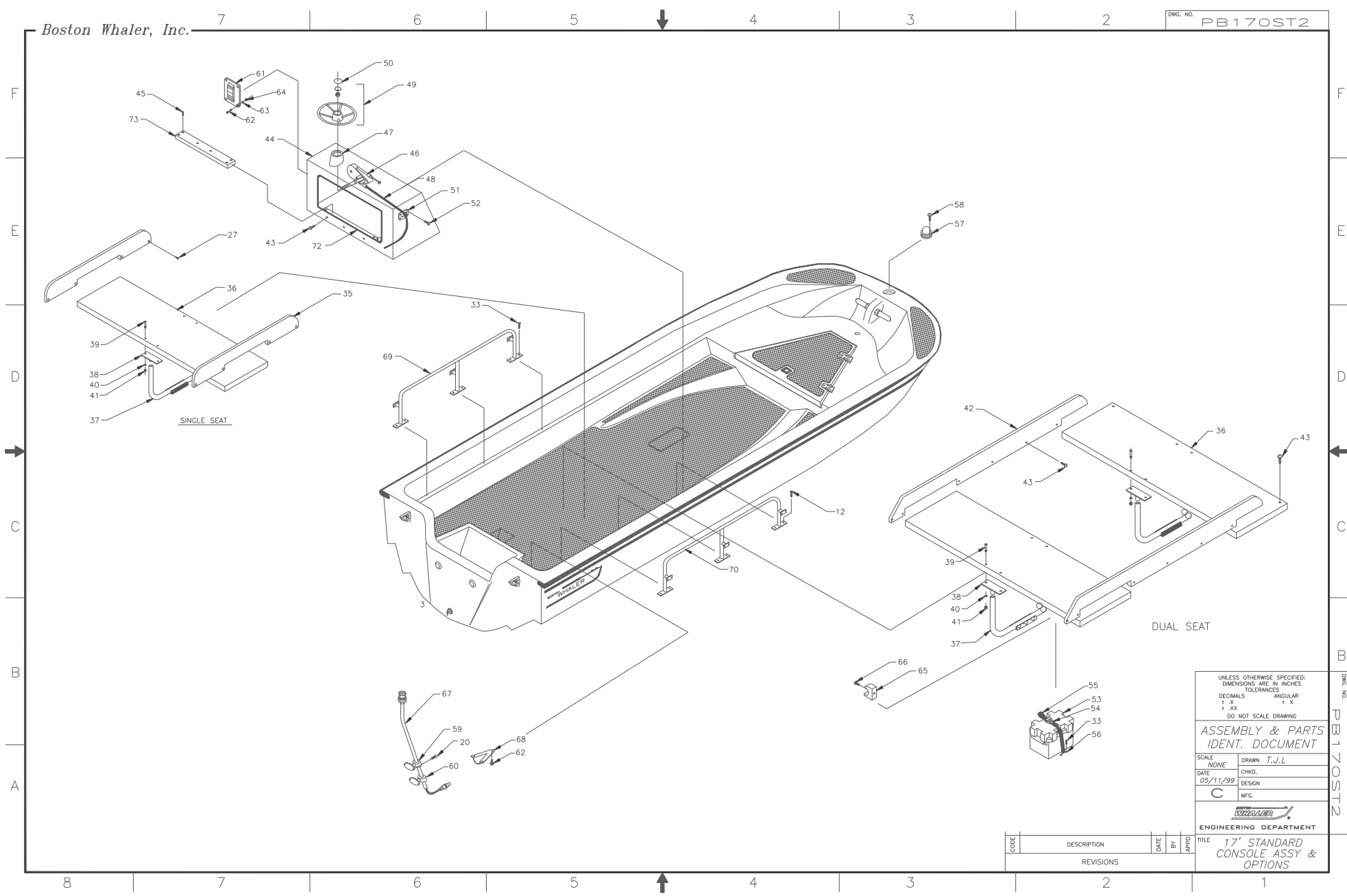


Boston Whaler, Inc.

DWG. NO. PB170ST2



UNLESS OTHERWISE SPECIFIED:
DIMENSIONS ARE IN INCHES
TOLERANCES
DECIMALS ANGULAR
± .X ± X
± .XX ± X
DO NOT SCALE DRAWING

ASSEMBLY & PARTS IDENT. DOCUMENT

SCALE NONE DRAWN T.J.L.
DATE 05/11/99 CHKD.
DESIGN
MFG.



ENGINEERING DEPARTMENT

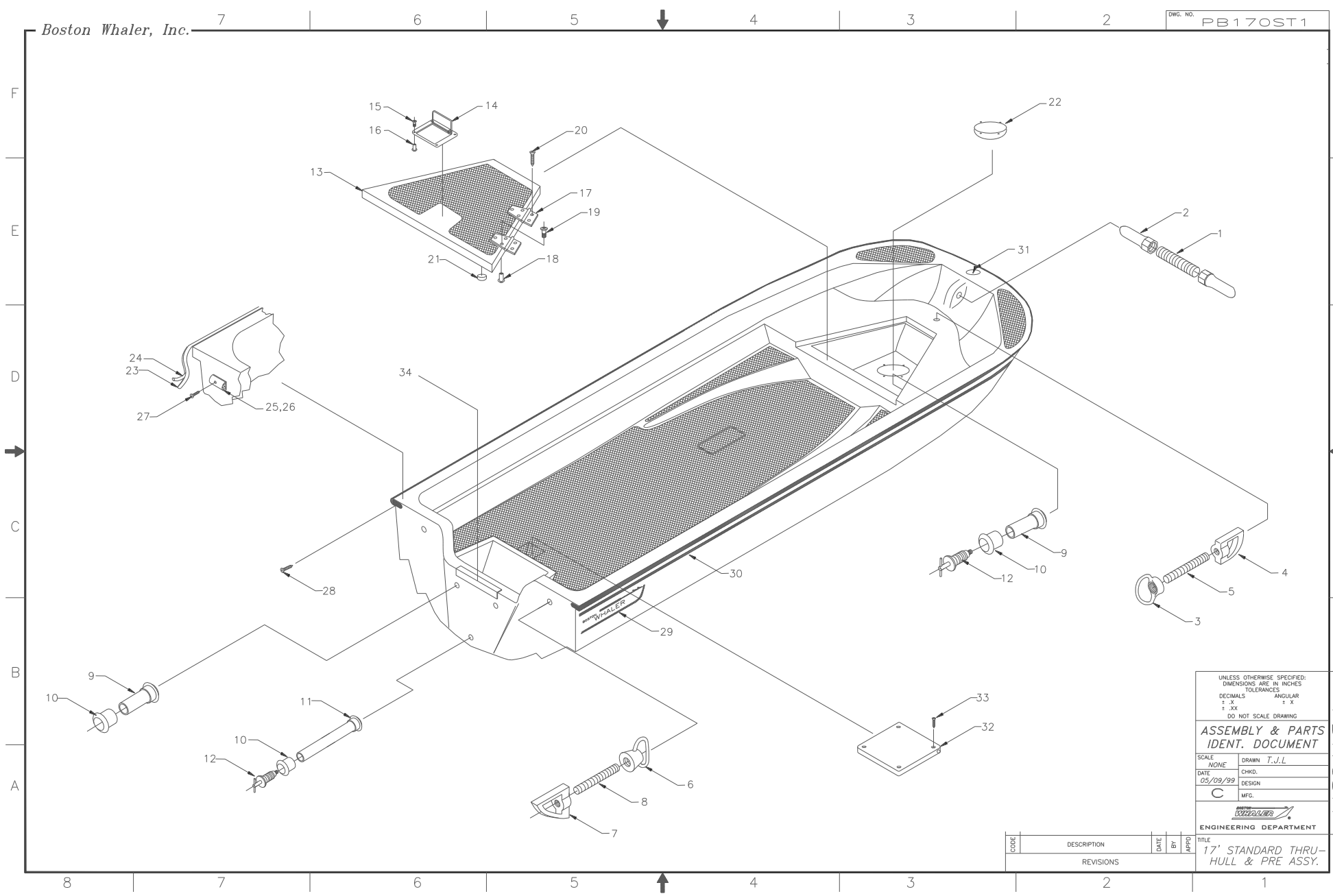
TITLE 17' STANDARD CONSOLE ASSY & OPTIONS

CODE	DESCRIPTION	DATE	BY	APPROD
REVISIONS				

DWG. NO. PB170ST2

Boston Whaler, Inc.

DWG. NO. PB170ST1



UNLESS OTHERWISE SPECIFIED:
 DIMENSIONS ARE IN INCHES
 TOLERANCES
 DECIMALS ANGULAR
 ± .X ± X
 ± .XX ± X
 DO NOT SCALE DRAWING

**ASSEMBLY & PARTS
 IDENT. DOCUMENT**

SCALE: NONE DRAWN: T.J.L.
 DATE: 05/09/99 CHKD.:
 DESIGN:
 MFG.:

ENGINEERING DEPARTMENT

TITLE: 17' STANDARD THRU-HULL & PRE ASSY.

CODE	DESCRIPTION	DATE	BY	APPD.
	REVISIONS			

DWG. NO. PB170ST1

PARTS LIST

BOAT MODEL: 17' STANDARD
DOCUMENT CONTROL NO. PB170513

ITEM	QTY.	U/M	DESCRIPTION	B.W. NO.
01	1	EA.	SNAP STUD, 3/8" X 3 1/32"	1040260
02	2	EA.	LIFT RING, NORMAN PIN	1035260
03	1	EA.	LIFT RING, BOW EYE NUT 1/2"	1035245
04	3	EA.	EYE, BOW/SKI HEAD CHR.	1033059
05	1	EA.	BOLT, EYE #1/2-13 X 7 5/8"	1025998
06	2	EA.	EYE, LIFTING 1/2"	1033091
07	2	EA.	EYE, BOW/SKI HEAD	1033059
08	2	EA.	BOLT, EYE 1/2-13 X 3 5/16"	1025972
09	4	EA.	THRU-HULL, PVC PRESS FIT	1042084
10	4	EA.	NUT, PVC RETAINING THRU-HULL	1042068
11	1	EA.	THRU-HULL, ASSY 11"	1073071
12	2	EA.	PLUG, BRASS 1" DRN TURN-TITE	0133371
13	1	EA.	COVER, BOW LOCKER FIBERGLASS	1061076
14	1	EA.	HANDLE, FLUSH	1041581
15	4	EA.	SCREW, MACHINE #10-24 X 1/2" POH.	1008432
16	6	EA.	NUT, BBL #10-24 X 1/2" TH.	1040203
17	2	EA.	HINGE, DOOR 1 1/2" X 3"	0995159
18	4	EA.	NUT, BBL #10-24 X 1/2" TH.	1040203
19	6	EA.	SCREW, MACHINE #10-24 X 3/4" POH.	1008440
20	24	EA.	SCREW, TAP #10A X 1" POH.	1008507
21	4	EA.	BUMPER, SELF-ADHESIVE CLEAR	1035566
22	1	EA.	COVER, ABS 6 3/8" POUR HOLE WHITE	1001163
23	1	EA.	RUBRAIL, PLASTIC CHR FLEX 40'	1020858
24	1	EA.	INSERT, RUBRAIL CHR FLEX 40'	1020817
25	1	EA.	CAP, END RUBBER RAIL PORT BLACK	1037639
26	1	EA.	CAP, END RUBRAIL STRBD BLACK	1037647
27	16	EA.	SCREW, TAPPING #10A X 2 1/2" POH.	1008531
28	100	EA.	SCREW, TAPPING #10A X 1 1/2" PFH.	1009943
29	1	EA.	DECAL, LOGO 18" FIRE RED	0997999
	1	EA.	DECAL, LOGO 18" CORBIN DARK BLUE	0998047
	1	EA.	DECAL, LOGO 18" DARK GREEN	0998054
30	22	FT.	TAPE, SOLID 1" FIRE RED W/PIN STRIPE	1038009
	22	FT.	TAPE, SOLID 1" CORBIN BLUE W/PIN STRIPE	1037958
	22	FT.	TAPE, SOLID 1" DARK GREEN W/PIN STRIPE	1037993
31	1	EA.	EMBLEM, BW STEERING WHEEL CAP	1021054
32	1	EA.	COVER, ABS AFT SUMP BLK	1037571
33	4	EA.	SCREW, TAPPING #10A X 1" POH	1008507
34	1	EA.	CAP, ABS TRANSOM BLK	1099226
35	6	EA.	SUPPORT, HDPE BW170-98BNCH SGL N/C	1068543
36	3	EA.	SEAT, BW170ST/CP-98 THWART FWD/AFT.	1068493
37	2	EA.	SUPPORT, BW-97 SEAT THWART	1034883
38	4	EA.	SUPPORT, BW-97 BASE RAIL	1008978
39	8	EA.	SCREW, MACHINE #10-32 X 1 1/4" PFH.	1010107
40	18	EA.	WASHER, FLAT #10	0152918
41	8	EA.	NUT, HEX NYLON LOCK #10-32	0152744
42	3	EA.	SUPPORT, HDPE BW-170-98 BNCH DL N/C	1068519
43	43	EA.	SCREW, TAPPING #10A X 1 1/2" PTH.	1008747
44	1	EA.	CONSOLE, FIBERGLASS	1060888
45	12	EA.	SCREW, TAPPING #14A X 1 1/2" PFH.	1008382
46	2	EA.	STEERING, HELM	0626143
47	2	EA.	STEERING, BREZEL 20 DEG.	0997049
48	2	EA.	STEERING, CABLE NFB W/ENDS 12'	0997098
49	2	EA.	STEERING, WHEEL 15" DIA. 25 DEG.	1020197
50	2	EA.	EMBLEM, BW STEERING WHEEL CAP	1021054
51	2	EA.	INSERT, HAWSE PIPE 2" BLACK	1043165
52	8	EA.	SCREW, TAP #6A X 3/4" PTH	1010197
53	1	FT.	HOLDER, BATTERY GR 24 FULLY ENCL.	0650598
54	1	EA.	UPH PARTS, BUCKLE 1" SIDE RELEASE M.	0871004
55	4	EA.	WEBBING, STRAP NYLON	1030105
56	2	EA.	BRACKET, BATTERY HOLD DOWN PLT.	1042837
57	1	EA.	LIGHT, BW170MT/CP-97 BOW	1035203
58	2	EA.	TAPPING, #6A X 1" PFH SC	1184548
59	1	EA.	BASE, NAV STERN LIGHT UPR	1033034
60	1	EA.	BASE, NAV STERN LIGHT LWR	1033026
61	1	EA.	PANEL, SWITCH NAV LIGHT	1026889
62	4	EA.	SCREW, MACHINE #6-32 X 1" PFH SC.	1010172
63	4	EA.	WASHER, FLAT #6 SS	0153858
64	4	EA.	NUT, LOCK 6-32 SC	1009810
65	1	EA.	CLIP, POLE STRONG BLK-MAST LIGHT	0590646
66	2	EA.	SCREW, TAPPING #10A X 1" PTH	1008739
67	1	EA.	LIGHT, BW130-150-97 STERN 36" X 3/4"	1035273
68	1	EA.	VENT, CLAMSHELL ROPE LCKR 1 5/8" X 1"	1026870
69	1	EA.	RAIL, SIDE BW170MT-97 PORT	1012467
70	1	FT.	RAIL, SIDE BW170MT-97 STRBD	1012509
71	2	EA.	SCREW, TAPPING #6A X 1" PPH SC	1184548
72	13	EA.	TRIM, EDGE WHITE FLEX U-TRIM	1020965
73	1	EA.	SUPPORT, HDPE BW170-98 BNCH W/CNSL	1068527
			NOT SHOWN	
	1	EA.	CAP, ABS TRANSOM BLACK	1099266
	1	EA.	LABEL, BW SAFTEY HI-PERF BOAT	1017136
	1	EA.	LIFT RING, BWCP170/190-97 BOW CHOCK	1035278
	1	EA.	PIPE, PVC SCH 160 BOE PIPE 3/4"	0167247
	4	EA.	RIVET, POP BLIND 1/8" X 1/4" ALUM	1007855
	1	EA.	MANUAL, OWNER - BW-9-17'SPORT SERIES	1033141
	1	EA.	INSERT, SLEEVE BW170MT-97 BOW	1043108
	2	EA.	LABEL, STEERING PULL WAR	1016518
	1	EA.	LABEL, SAFTEY HI-PER, BOAT	1017136
	2	EA.	PLATE, NMMA	1020114
	4	EA.	RIVET, POP BLD #1/8" X 1/4" ALUM.	1007855
	1	EA.	FUSE, FERRULE TYPE AGC 10A	0182063
	1	EA.	MANUAL, OWNERS	1033141
	1	EA.	PACKET, OWNERS DOC	1031288
	3	EA.	PLATE, NMMA 97-BW170 BARE HULL	1020122
	2	EA.	LABEL, SAFTEY HI-PERF BOAT	1017136
	1	EA.	MANUAL, OWNERS	1033141
	3	EA.	PLATE, NMMA 97-BW170 BARE HULL	1020122