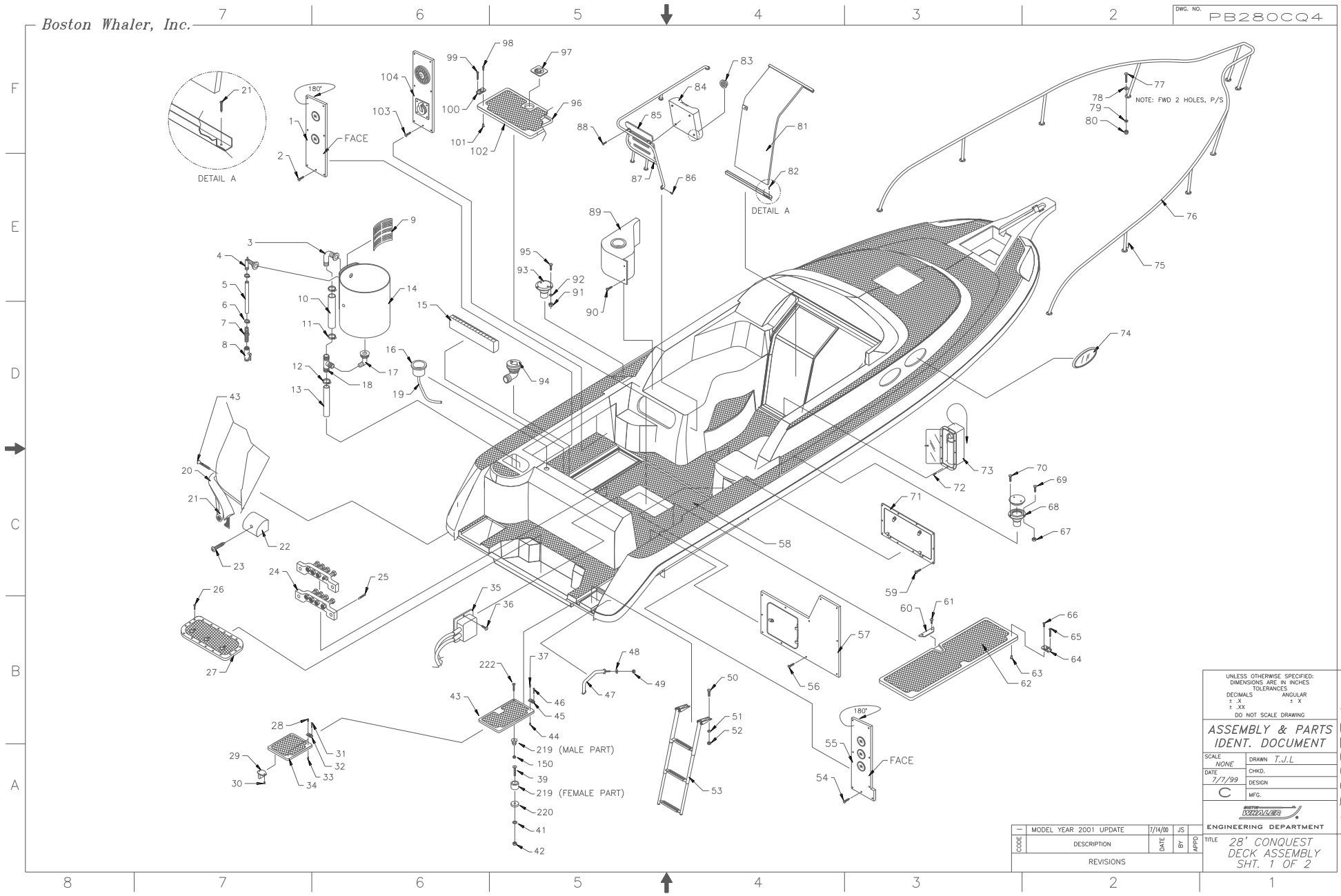


Boston Whaler, Inc.

DWG. NO. PB280CQ4



UNLESS OTHERWISE SPECIFIED:
 DIMENSIONS ARE IN INCHES
 TOLERANCES
 DECIMALS ANGULAR
 ± .X ± X
 ± .XX ± .XX
 DO NOT SCALE DRAWING

ASSEMBLY & PARTS IDENT. DOCUMENT

SCALE: NONE DRAWN: T.J.L.
 DATE: 7/7/99 CHKD.:
 DESIGN:
 MFG.: C

ENGINEERING DEPARTMENT

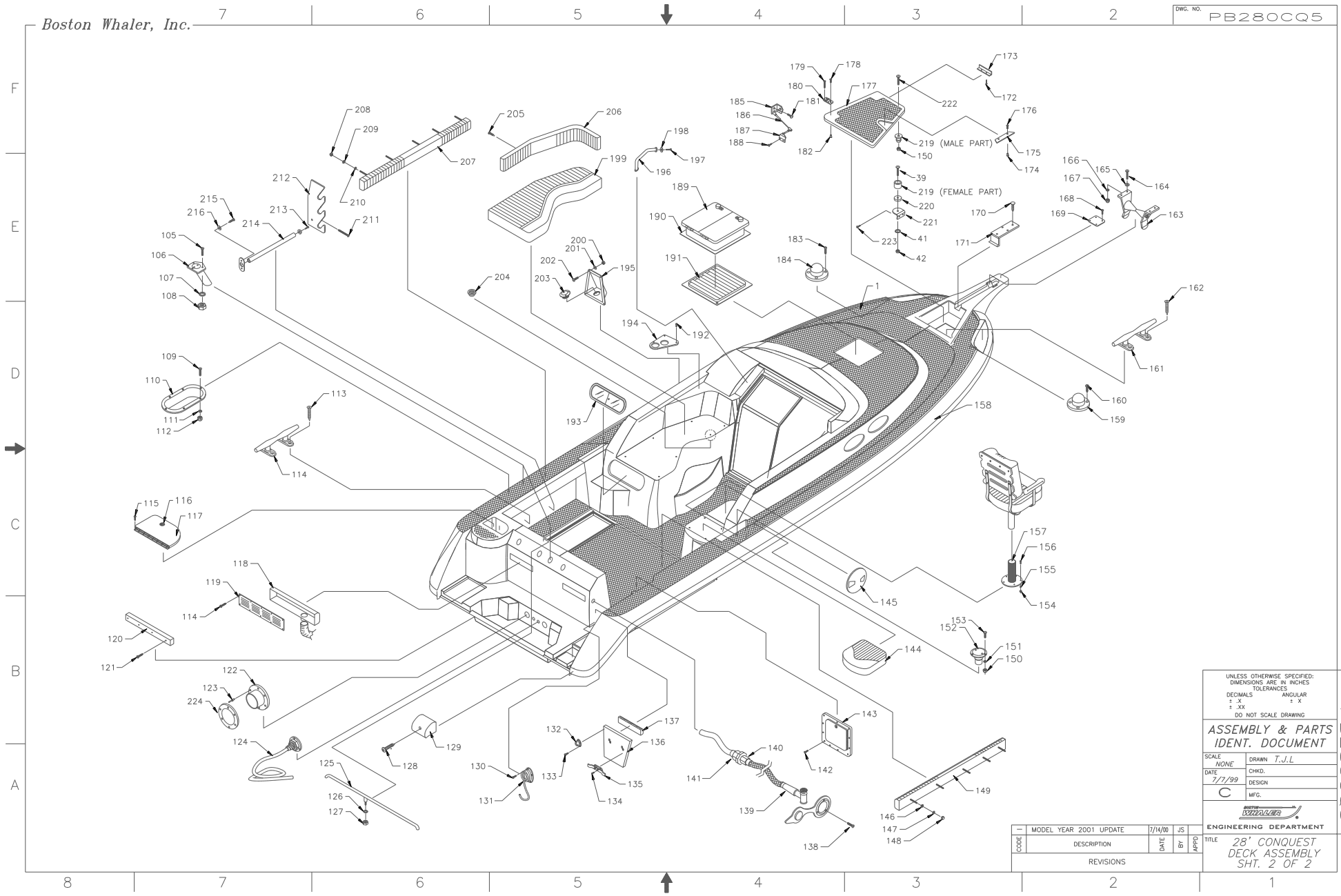
TITLE: 28' CONQUEST DECK ASSEMBLY SHT. 1 OF 2

| MODEL YEAR | DESCRIPTION | DATE | BY | APPD |
|------------|-------------|---------|----|------|
| 2001 | UPDATE | 7/14/00 | JS | |
| REVISIONS | | | | |

DRAWING NO. PB280CQ4

Boston Whaler, Inc.

DWG. NO. PB280CQ5



UNLESS OTHERWISE SPECIFIED:
DIMENSIONS ARE IN INCHES
TOLERANCES

| | |
|----------|---------|
| DECIMALS | ANGULAR |
| ± .X | ± X |
| ± .XX | ± .XX |

DO NOT SCALE DRAWING

ASSEMBLY & PARTS IDENT. DOCUMENT

| | | | |
|-------|--------|--------|--------|
| SCALE | NONE | DRAWN | T.J.L. |
| DATE | 7/7/99 | CHKD. | |
| | | DESIGN | |
| | | MFG. | |

ENGINEERING DEPARTMENT

| | | | | | |
|------------|-------------|-------------|---------|------|--------|
| MODEL YEAR | 2001 UPDATE | DATE | 7/14/00 | BY | JS |
| CODE | | DESCRIPTION | | DATE | BY |
| | | REVISIONS | | | APPROD |

TITLE: **28' CONQUEST DECK ASSEMBLY SHT. 2 OF 2**

BOSTON WHALER

MODEL YEAR 2001 PARTS LIST

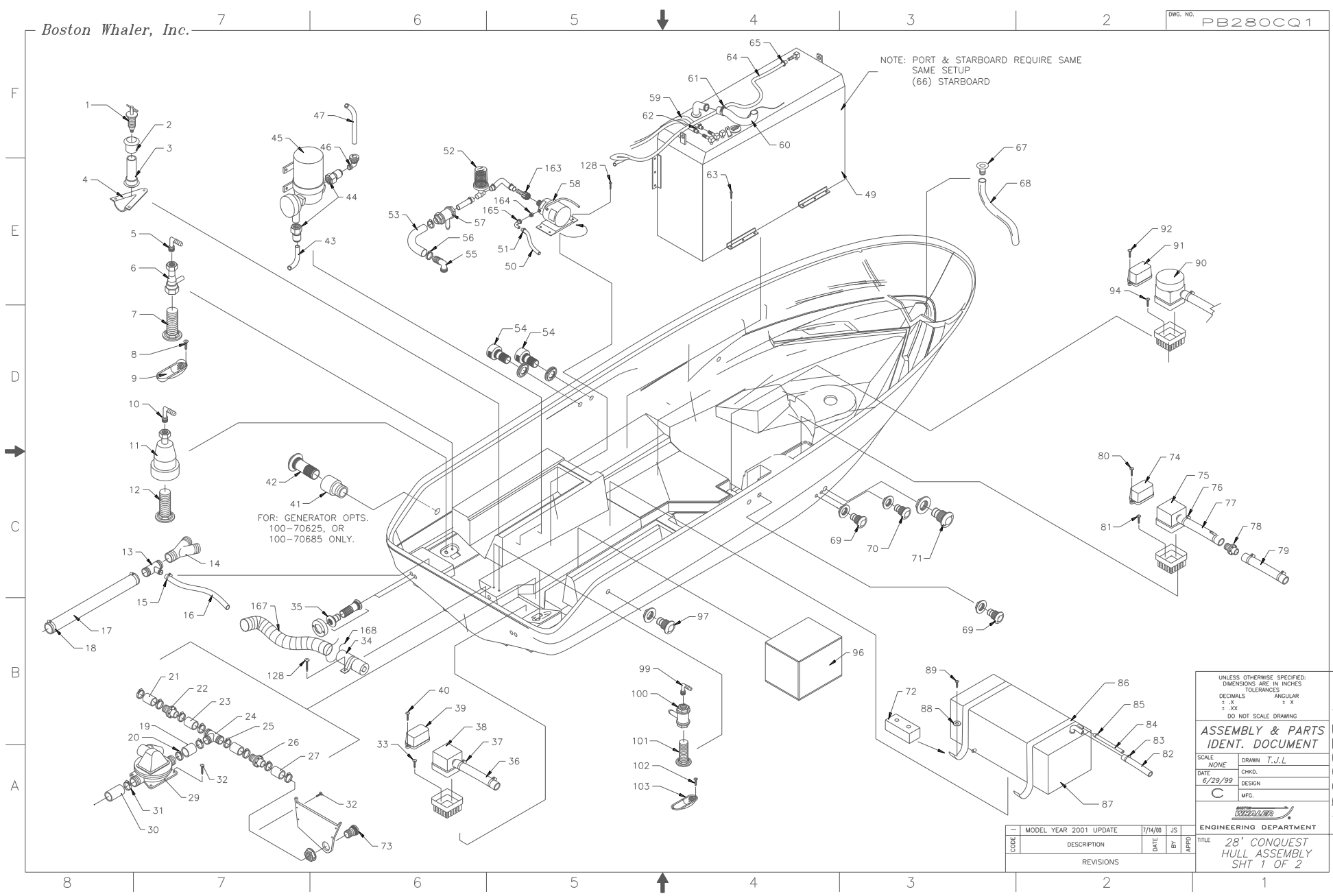
| Part No | Part Name | Part No |
|---------|------------------------|---------|
| 101 | ALLOY ROD END BUSH KIT | 100101 |
| 102 | ALLOY ROD END BUSH KIT | 100102 |
| 103 | ALLOY ROD END BUSH KIT | 100103 |
| 104 | ALLOY ROD END BUSH KIT | 100104 |
| 105 | ALLOY ROD END BUSH KIT | 100105 |
| 106 | ALLOY ROD END BUSH KIT | 100106 |
| 107 | ALLOY ROD END BUSH KIT | 100107 |
| 108 | ALLOY ROD END BUSH KIT | 100108 |
| 109 | ALLOY ROD END BUSH KIT | 100109 |
| 110 | ALLOY ROD END BUSH KIT | 100110 |
| 111 | ALLOY ROD END BUSH KIT | 100111 |
| 112 | ALLOY ROD END BUSH KIT | 100112 |
| 113 | ALLOY ROD END BUSH KIT | 100113 |
| 114 | ALLOY ROD END BUSH KIT | 100114 |
| 115 | ALLOY ROD END BUSH KIT | 100115 |
| 116 | ALLOY ROD END BUSH KIT | 100116 |
| 117 | ALLOY ROD END BUSH KIT | 100117 |
| 118 | ALLOY ROD END BUSH KIT | 100118 |
| 119 | ALLOY ROD END BUSH KIT | 100119 |
| 120 | ALLOY ROD END BUSH KIT | 100120 |
| 121 | ALLOY ROD END BUSH KIT | 100121 |
| 122 | ALLOY ROD END BUSH KIT | 100122 |
| 123 | ALLOY ROD END BUSH KIT | 100123 |
| 124 | ALLOY ROD END BUSH KIT | 100124 |
| 125 | ALLOY ROD END BUSH KIT | 100125 |
| 126 | ALLOY ROD END BUSH KIT | 100126 |
| 127 | ALLOY ROD END BUSH KIT | 100127 |
| 128 | ALLOY ROD END BUSH KIT | 100128 |
| 129 | ALLOY ROD END BUSH KIT | 100129 |
| 130 | ALLOY ROD END BUSH KIT | 100130 |
| 131 | ALLOY ROD END BUSH KIT | 100131 |
| 132 | ALLOY ROD END BUSH KIT | 100132 |
| 133 | ALLOY ROD END BUSH KIT | 100133 |
| 134 | ALLOY ROD END BUSH KIT | 100134 |
| 135 | ALLOY ROD END BUSH KIT | 100135 |
| 136 | ALLOY ROD END BUSH KIT | 100136 |
| 137 | ALLOY ROD END BUSH KIT | 100137 |
| 138 | ALLOY ROD END BUSH KIT | 100138 |
| 139 | ALLOY ROD END BUSH KIT | 100139 |
| 140 | ALLOY ROD END BUSH KIT | 100140 |
| 141 | ALLOY ROD END BUSH KIT | 100141 |
| 142 | ALLOY ROD END BUSH KIT | 100142 |
| 143 | ALLOY ROD END BUSH KIT | 100143 |
| 144 | ALLOY ROD END BUSH KIT | 100144 |
| 145 | ALLOY ROD END BUSH KIT | 100145 |
| 146 | ALLOY ROD END BUSH KIT | 100146 |
| 147 | ALLOY ROD END BUSH KIT | 100147 |
| 148 | ALLOY ROD END BUSH KIT | 100148 |
| 149 | ALLOY ROD END BUSH KIT | 100149 |
| 150 | ALLOY ROD END BUSH KIT | 100150 |
| 151 | ALLOY ROD END BUSH KIT | 100151 |
| 152 | ALLOY ROD END BUSH KIT | 100152 |
| 153 | ALLOY ROD END BUSH KIT | 100153 |
| 154 | ALLOY ROD END BUSH KIT | 100154 |
| 155 | ALLOY ROD END BUSH KIT | 100155 |
| 156 | ALLOY ROD END BUSH KIT | 100156 |
| 157 | ALLOY ROD END BUSH KIT | 100157 |
| 158 | ALLOY ROD END BUSH KIT | 100158 |
| 159 | ALLOY ROD END BUSH KIT | 100159 |
| 160 | ALLOY ROD END BUSH KIT | 100160 |
| 161 | ALLOY ROD END BUSH KIT | 100161 |
| 162 | ALLOY ROD END BUSH KIT | 100162 |
| 163 | ALLOY ROD END BUSH KIT | 100163 |
| 164 | ALLOY ROD END BUSH KIT | 100164 |
| 165 | ALLOY ROD END BUSH KIT | 100165 |
| 166 | ALLOY ROD END BUSH KIT | 100166 |
| 167 | ALLOY ROD END BUSH KIT | 100167 |
| 168 | ALLOY ROD END BUSH KIT | 100168 |
| 169 | ALLOY ROD END BUSH KIT | 100169 |
| 170 | ALLOY ROD END BUSH KIT | 100170 |
| 171 | ALLOY ROD END BUSH KIT | 100171 |
| 172 | ALLOY ROD END BUSH KIT | 100172 |
| 173 | ALLOY ROD END BUSH KIT | 100173 |
| 174 | ALLOY ROD END BUSH KIT | 100174 |
| 175 | ALLOY ROD END BUSH KIT | 100175 |
| 176 | ALLOY ROD END BUSH KIT | 100176 |
| 177 | ALLOY ROD END BUSH KIT | 100177 |
| 178 | ALLOY ROD END BUSH KIT | 100178 |
| 179 | ALLOY ROD END BUSH KIT | 100179 |
| 180 | ALLOY ROD END BUSH KIT | 100180 |
| 181 | ALLOY ROD END BUSH KIT | 100181 |
| 182 | ALLOY ROD END BUSH KIT | 100182 |
| 183 | ALLOY ROD END BUSH KIT | 100183 |
| 184 | ALLOY ROD END BUSH KIT | 100184 |
| 185 | ALLOY ROD END BUSH KIT | 100185 |
| 186 | ALLOY ROD END BUSH KIT | 100186 |
| 187 | ALLOY ROD END BUSH KIT | 100187 |
| 188 | ALLOY ROD END BUSH KIT | 100188 |
| 189 | ALLOY ROD END BUSH KIT | 100189 |
| 190 | ALLOY ROD END BUSH KIT | 100190 |
| 191 | ALLOY ROD END BUSH KIT | 100191 |
| 192 | ALLOY ROD END BUSH KIT | 100192 |
| 193 | ALLOY ROD END BUSH KIT | 100193 |
| 194 | ALLOY ROD END BUSH KIT | 100194 |
| 195 | ALLOY ROD END BUSH KIT | 100195 |
| 196 | ALLOY ROD END BUSH KIT | 100196 |
| 197 | ALLOY ROD END BUSH KIT | 100197 |
| 198 | ALLOY ROD END BUSH KIT | 100198 |
| 199 | ALLOY ROD END BUSH KIT | 100199 |
| 200 | ALLOY ROD END BUSH KIT | 100200 |

Boston Whaler, Inc.

DWG. NO. PB280CQ1

NOTE: PORT & STARBOARD REQUIRE SAME
SAME SETUP
(66) STARBOARD

FOR: GENERATOR OPTS.
100-70625, OR
100-70685 ONLY.



UNLESS OTHERWISE SPECIFIED:
DIMENSIONS ARE IN INCHES
TOLERANCES
DECIMALS ANGULAR
± .X ± X
± .XX

DO NOT SCALE DRAWING

**ASSEMBLY & PARTS
IDENT. DOCUMENT**

SCALE: NONE DRAWN: T.J.L.
DATE: 6/29/99 CHKD.:
DESIGN:
C MFG.

ENGINEERING DEPARTMENT

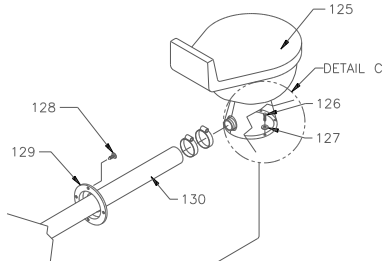
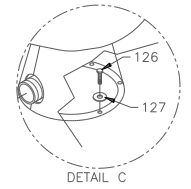
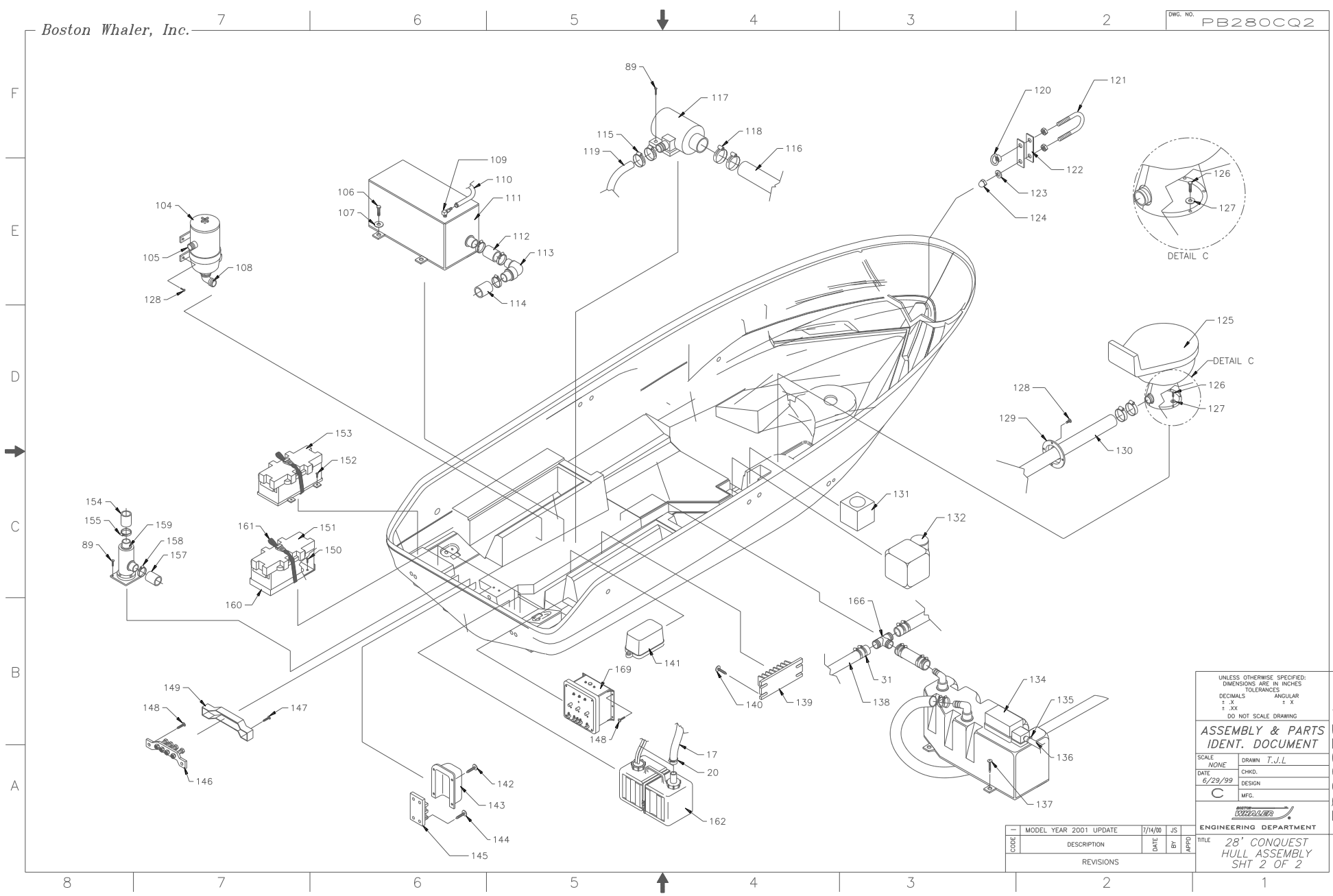
TITLE: 28' CONQUEST
HULL ASSEMBLY
SHT 1 OF 2

| CODE | DESCRIPTION | DATE | BY | APPD |
|-----------|-------------|------|----|------|
| REVISIONS | | | | |

DWG. NO. PB280CQ1

Boston Whaler, Inc.

DWG. NO. PB280CQ2



UNLESS OTHERWISE SPECIFIED:
 DIMENSIONS ARE IN INCHES
 TOLERANCES
 DECIMALS ANGULAR
 ± .005 ± .5°
 DO NOT SCALE DRAWING

ASSEMBLY & PARTS IDENT. DOCUMENT

SCALE: NONE DRAWN: T.J.L.
 DATE: 6/29/99 CHKD.:
 DESIGN:
 MFG.:

ENGINEERING DEPARTMENT

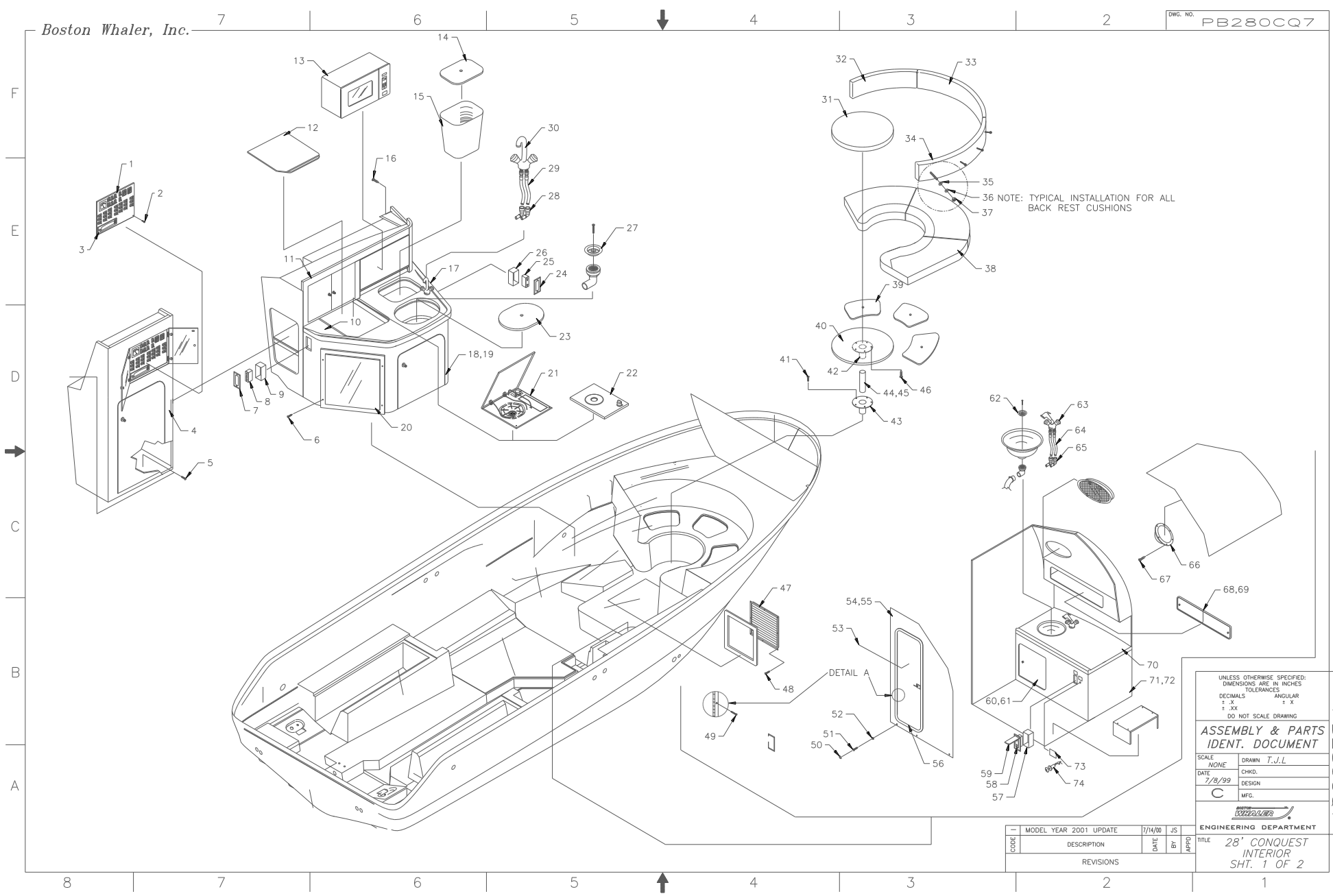
TITLE: 28' CONQUEST HULL ASSEMBLY SHT 2 OF 2

| CODE | DESCRIPTION | DATE | BY | APPD |
|-----------|------------------------|---------|----|------|
| --- | MODEL YEAR 2001 UPDATE | 7/14/00 | JS | |
| REVISIONS | | | | |

DWG. NO. PB280CQ2

Boston Whaler, Inc.

DWG. NO. PB280CQ7



UNLESS OTHERWISE SPECIFIED:
 DIMENSIONS ARE IN INCHES
 TOLERANCES
 DECIMALS ± .005 ANGULAR ± .5°
 DO NOT SCALE DRAWING

ASSEMBLY & PARTS IDENT. DOCUMENT

SCALE: NONE DRAWN: T.J.L.
 DATE: 7/8/99 CHKD.:
 DESIGN:
 MFG.: C

ENGINEERING DEPARTMENT

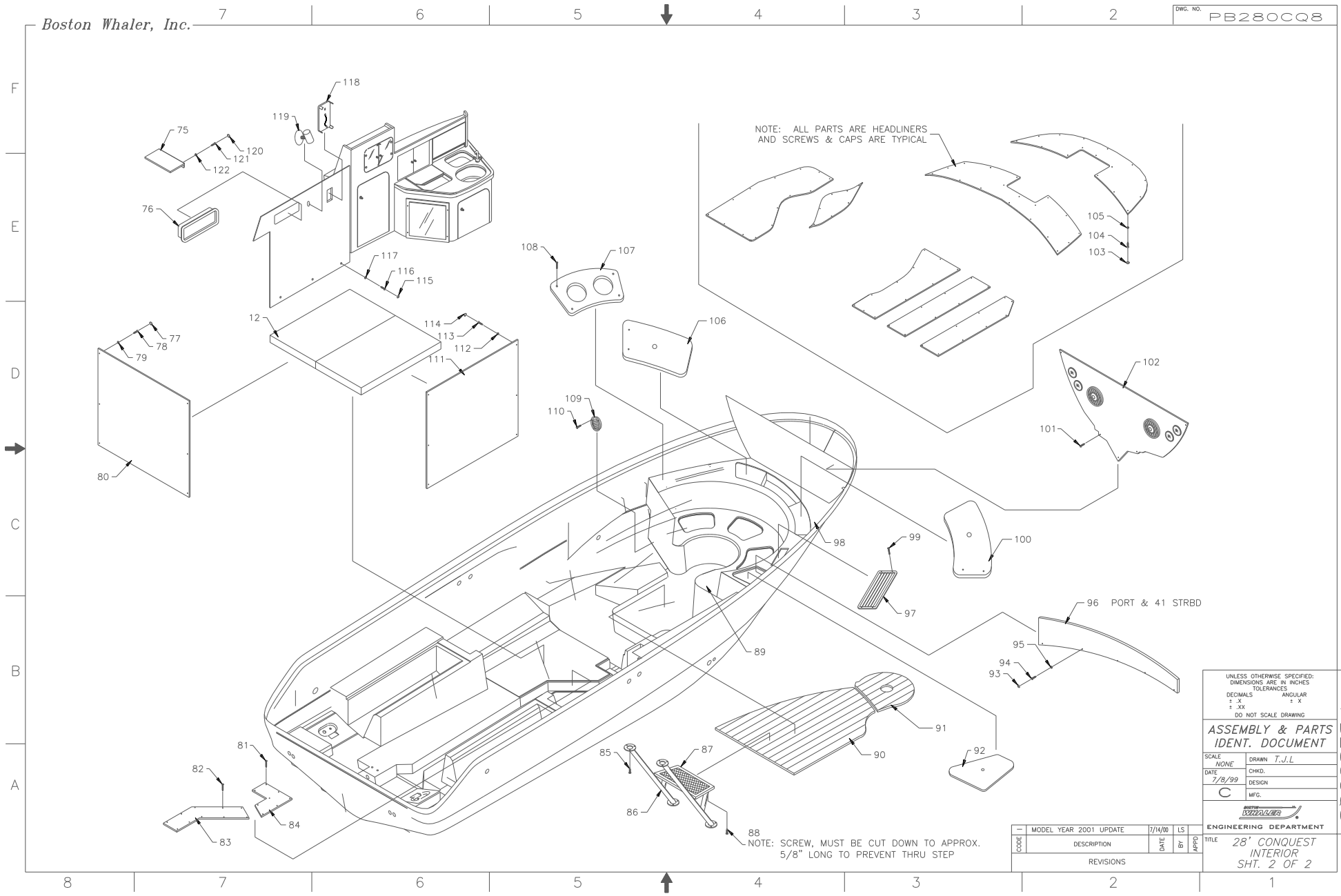
TITLE: 28' CONQUEST INTERIOR SHIT. 1 OF 2

| CODE | DESCRIPTION | DATE | BY | APPROV. |
|-----------|-------------|------|----|---------|
| REVISIONS | | | | |

DWG. NO. PB280CQ7

Boston Whaler, Inc.

DWG. NO. PB280CQ8



UNLESS OTHERWISE SPECIFIED:
 DIMENSIONS ARE IN INCHES
 TOLERANCES
 DECIMALS ANGULAR
 ± .X ± X
 ± .XX ± .X
 DO NOT SCALE DRAWING

ASSEMBLY & PARTS IDENT. DOCUMENT

| | | | |
|-------|--------|--------|--------|
| SCALE | NONE | DRAWN | T.J.L. |
| DATE | 7/8/99 | CHKD. | |
| | | DESIGN | |
| | | MFG. | |

ENGINEERING DEPARTMENT

| | | | | | |
|------------|-------------|-------------|---------|----|------|
| MODEL YEAR | 2001 UPDATE | DATE | 7/14/00 | LS | |
| CODE | | DESCRIPTION | | BY | APFD |
| REVISIONS | | | | | |

TITLE: 28' CONQUEST INTERIOR SHIT. 2 OF 2

B
PB280CQ8
CON. DWG.

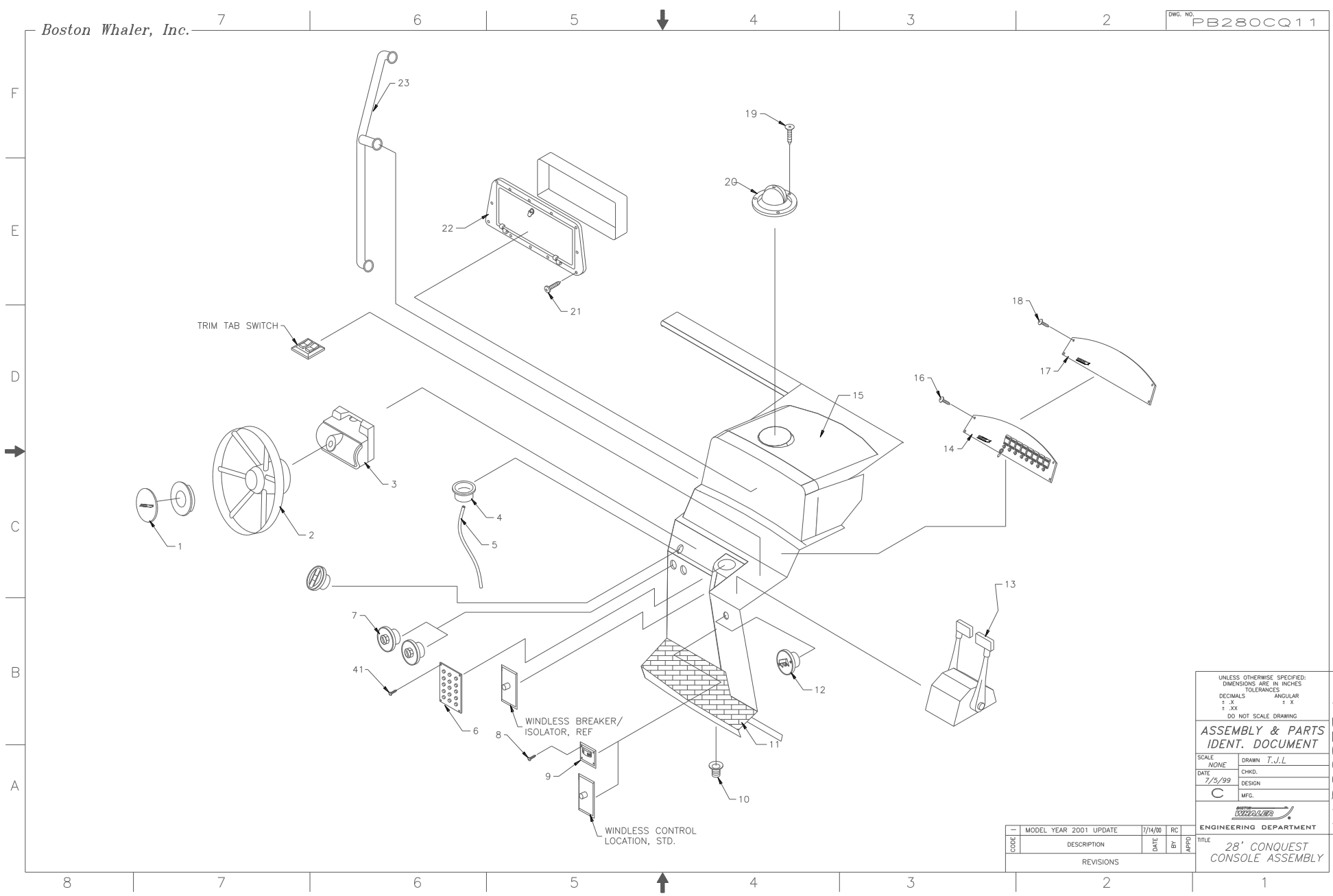
MODEL YEAR 2001 PARTS LIST

BOAT MODEL: 38' CONQUEST INTERIOR
DOCUMENT CONTROL NO: 1628000P

| ITEM | QTY | UOM | DESCRIPTION | PART NO. |
|-----------|-----|-----------------------------------|--|----------|
| 01 | 1 | EA. | PANEL, BW28000/OR-01 MAIN DIST 120V | 1455013 |
| 02 | 8 | EA. | SCREW, TAPPING #6A X 1/2" PTH | 1008796 |
| 03 | 1 | EA. | STEREO, AM/FM CD PLAYER W/CHANGER CT | 1459155 |
| 04 | 1 | EA. | CABINET, HANG LOCKER | 1117288 |
| 05 | AR | EA. | SCREW, TAPPING #10A X 1 1/2" POH | 1008515 |
| 06 | 3 | EA. | SCREW, TAPPING #6A X 1/4" POH | 0150797 |
| 07 | 1 | EA. | COVER PLATE, SINGLE DUPLEX RECEIPT WHT | 0258384 |
| 08 | 2 | EA. | RECEPTICLE, GFI DUPLEX WHT 15A | 0258368 |
| 09 | 2 | EA. | BOX, RECEPTICLE BOX ONLY | 0145128 |
| 10 | 1 | EA. | GALLEY, COUNTERTOP ASSEMBLY | 18182903 |
| 11 | 1 | EA. | CABINET, UPPER PORT | 1112770 |
| 12 | 1 | EA. | CUSH, BW28000-01 MID CABIN | 1474071 |
| 13 | 1 | EA. | MICROWAVE, GE 0 GFI WHT 115V/600W | 1275486 |
| 14 | 1 | EA. | COVER, CORIAN TRASH GALLEY | 1118744 |
| 15 | 1 | EA. | BASKET, TRASH | 0431098 |
| 16 | 8 | FT. | SCREW, TAPPING #10A X 1" PTH | 1008739 |
| 17 | 1 | FT. | FIBERGLASS PART, COUNTERTOP | 1109529 |
| 18 | 1 | EA. | CABINET, GALLEY LOWER PORT | 1112762 |
| 19 | AR | EA. | SCREW, TAPPING #10A X 1 1/2" POH | 1008515 |
| 20 | 1 | EA. | REFRIGERATOR, 2.0 CF AC/DC | 0777417 |
| 21 | 1 | FT. | STOVE, BUTANE SGL BURNER PORTABLE | 1090703 |
| 22 | 1 | EA. | STOVE, ELEC 1-BURNER EUROSTYLE BLK | 1110667 |
| 23 | 1 | FT. | COVER, CORIAN SINK GALLEY | 1118736 |
| 24 | 1 | EA. | COVER PLATE, SGL DUPLEX RECEIPT WHT | 0258384 |
| 25 | 1 | EA. | RECEPTICLE, GFI DUPLEX WHT 15A | 0258368 |
| 26 | 1 | EA. | BOX, RECEPTICLE BOX ONLY | 0145128 |
| 27 | 1 | FT. | DRAIN, ASSY FLUSH MNT W/1" HOSE BAR | 0886200 |
| 28 | 2 | EA. | ELBOW, WHALE 90° STEM 15MM | 0909978 |
| 29 | AR | EA. | ADAPTER, WHALE 1/2" F-15MM | 0910000 |
| 30 | 1 | FT. | FAUCET, MIX W/HVY DTY SPOUT | 1082098 |
| 31 | 1 | EA. | CUSH, BW28000-01 VBERTH/TABLETOP | 1474063 |
| 32 | 1 | EA. | CUSH, BW28000-01 B/R VBERTH PORT | 1474089 |
| 33 | 1 | EA. | CUSH, BW28000-01 B/R VBERTH CTR | 1474105 |
| 34 | 1 | EA. | CUSH, BW28000-01 B/R VBERTH STBD | 1474097 |
| 35 | AR | EA. | WASHER, LOCK/SPLIT 1/4" SS | 0153668 |
| 36 | AR | FT. | WASHER, FENDER #1/4" X 1 1/4" SS | 0189365 |
| 37 | 12 | EA. | NUT, HEX #1/4-20 SS | 0152645 |
| 38 | 1 | EA. | CUSH, BW28000-01 BASE VBERTH | 1474131 |
| 39 | 3 | EA. | LID, PROPANEL VBERTH WHT | 1105824 |
| 40 | 1 | EA. | FIBERGLASS PART, TABLE DINETTE | 1132639 |
| 41 | AR | EA. | SCREW, TAPPING #14A X 1 1/2" PPH | 1008382 |
| 42 | 1 | EA. | BASE, TABLE SURF MNT ALUM TAPERED | 1122985 |
| 43 | 1 | EA. | BASE, TABLE FLUSH MNT ALUM TAPERED | 1125293 |
| 44 | 1 | EA. | POST, TABLE LEG 27" ANOD FLUTED TAP | 1125251 |
| 45 | 1 | EA. | POST, TABLE LEG 14.75" ANOD FLUTE | 1125269 |
| 46 | AR | EA. | SCREW, TAPPING #14A X 3/4" PPH SS | 1051341 |
| 47 | 1 | EA. | A/C COMP, GRILL 10X8 SNAP W/R/FILTER | 1125137 |
| 48 | AR | EA. | SCREW, TAPPING #6A X 1" PTH | 1008812 |
| 49 | AR | EA. | SCREW, TAPPING #8A X 1" PPH | 1010354 |
| 50 | AR | EA. | SNAP CAP, PLASTIC WASHER | 1031319 |
| 51 | AR | EA. | SCREW, TAPPING #10A X 1 1/2" POH | 1008515 |
| 52 | AR | EA. | SNAP CAP, PLASTIC WHEAT MATTE | 1139500 |
| 53 | 1 | EA. | DOOR, HEAD ALUM FRAME | 1105683 |
| 54 | 1 | EA. | PLY, P/C BULKHEAD WHT | 1124478 |
| 55 | AR | EA. | SCREW, TAPPING #10A X 1 1/2" POH | 1008515 |
| 56 | 4 | EA. | SCREW, TAPPING #6A X 1" PPH | 1010354 |
| 57 | 1 | EA. | BOX, RECEPTICLE BOX ONLY | 0145128 |
| 58 | 1 | EA. | RECEPTICLE, GFI DUPLEX WHT 15A | 0258368 |
| 59 | 1 | EA. | COVER PLATE, SS GFI DUPLEX WATERPROOF | 1128156 |
| 60 | 1 | EA. | CABINET, HDPE VANITY LOWER | 1112747 |
| 61 | AR | EA. | SCREW, TAPPING #10A X 1 1/2" POH | 1008515 |
| 62 | 1 | EA. | DRAIN ASSY, FLUSH MNT W/1" HOSE BAR | 0886200 |
| 63 | 1 | EA. | FAUCET/SHOWER, WHT MIX W/ON/OFF | 1105691 |
| 64 | AR | EA. | ADAPTER, WHALE 1/2" F-15MM | 0910000 |
| 65 | 2 | EA. | ELBOW, WHALE 90° STEM 15MM | 0909978 |
| 66 | 1 | EA. | LIGHT, DOME EXTERIOR 4" WHT | 0996488 |
| 67 | AR | EA. | SCREW, TAPPING #6A X 1/2" PTH | 1008812 |
| 68 | 1 | EA. | CABINET, HDPE VANITY | 1112754 |
| 69 | AR | EA. | SCREW, TAPPING #8A X 1 1/2" POH | 0150821 |
| 70 | 1 | EA. | FIBERGLASS PART, COUNTER TOP | 1109537 |
| 71 | 1 | EA. | VANITY, COUNTERTOP ASSEMBLY | 18182903 |
| 72 | AR | EA. | SCREW, TAPPING #10A X 1" PTH | 1008739 |
| 73 | 1 | EA. | PANEL, HOLDING TANK/OVBOD | 1452457 |
| 74 | 1 | EA. | SWITCH, WASTE PUMP W/KEY SCREW TERMIN | 1444074 |
| 75 | 1 | EA. | SHELF, HDPE SLIDING WINDOW | 1128073 |
| 76 | 1 | EA. | BOX, FIRE EXT. SHORT WHITE | 1037555 |
| 77 | AR | FT. | SNAP CAP, PLASTIC WHITE | 1139500 |
| 78 | AR | EA. | SCREW, TAPPING #10A X 1 1/2" POH | 1008515 |
| 79 | AR | EA. | SNAP CAP, PLASTIC WASHER | 1031319 |
| 80 | 1 | EA. | PLY, P/C BULKHEAD MID CABIN | 1123707 |
| 81 | AR | EA. | SCREW, TAPPING #10A X 1" POH | 1008507 |
| 82 | AR | EA. | SCREW, TAPPING #10A X 1" POH | 1008507 |
| 83 | 1 | EA. | LID, HDPE CABIN SLUMP AFT | 1124494 |
| 84 | 1 | EA. | LID, HDPE CABIN SLUMP FWD | 1124551 |
| 85 | AR | EA. | SCREW, TAPPING #14A X 1 1/2" PTH | 1010909 |
| 86 | 2 | EA. | FRAME, COMPANIONWAY STAIRS FRAME | 1105725 |
| 87 | 1 | EA. | COMPANIONWAY STEP | 22183600 |
| 88 | AR | EA. | SCREW, TAPPING #14A X 1" PPH | 1008689 |
| 89 | 1 | EA. | FORWARD BERTH | 22181000 |
| 90 | 1 | EA. | CABIN SOLE | 1103560 |
| 91 | 1 | EA. | PLY, CABIN SOLE FWD | 1124528 |
| 92 | 1 | EA. | LID, DINETTE B/R | 1105808 |
| 93 | AR | EA. | SNAP CAP, PLASTIC WHEAT MATTE | 1139500 |
| 94 | AR | EA. | SCREW, TAPPING #10A X 1" POH | 1008507 |
| 95 | AR | EA. | SNAP CAP, PLASTIC WASHER | 1031319 |
| 96 | 1 | EA. | BOLSTER, CABIN PORT | 1124538 |
| 97 | 1 | EA. | AC COMP, GRILL 12 X 4" PLASTIC WHT | 1125129 |
| 98 | 1 | EA. | DINETTE, BACK REST | 22181100 |
| 99 | AR | EA. | SCREW, TAPPING #8A X 1/2" PTH | 1008812 |
| 100 | 1 | EA. | LID, PROPANEL DINETTE B/R | 1105816 |
| 101 | AR | EA. | SCREW, TAPPING #10A X 2" PTH | 1008754 |
| 102 | 1 | EA. | BULKHEAD, P/BVINYL ANCHOR LOCKER | 1105550 |
| 103 | AR | EA. | SNAP CAP, PLASTIC WHEAT MATTE | 1139500 |
| 104 | AR | EA. | SCREW, TAPPING #10A X 1 1/2" POH | 1008515 |
| 105 | AR | EA. | SNAP CAP, PLASTIC WASHER | 1031319 |
| 106 | 1 | EA. | LID, PROPANEL DINETTE B/R | 1105816 |
| 107 | 1 | EA. | RACK, HDPE BOTTLE SEAFM | 1118728 |
| 108 | 3 | EA. | SCREW, TAPPING #8A X 1" POH | 0150805 |
| 109 | AR | EA. | A/C COMP, GRILL 12 X 4" W/DA WHT | 1105198 |
| 110 | AR | EA. | SCREW, TAPPING #8A X 1" PTH | 1008804 |
| 111 | 1 | EA. | PLY, P/C MIDCABIN STBD | 1123686 |
| 112 | AR | EA. | SNAP CAP, PLASTIC WASHER | 1031319 |
| 113 | AR | EA. | SCREW, TAPPING #10A X X 1 1/2" POH | 1008515 |
| 114 | AR | EA. | SNAP CAP, PLASTIC WHEAT MATTE | 1139500 |
| 115 | AR | EA. | SNAP CAP, PLASTIC WHEAT MATTE | 1139500 |
| 116 | AR | EA. | SCREW, TAPPING #10A X X 1 1/2" POH | 1008515 |
| 117 | AR | EA. | SNAP CAP, PLASTIC WASHER | 1031319 |
| 118 | 1 | EA. | MONITOR, CO DETECTOR WHT | 0965707 |
| 119 | 1 | FT. | LIGHT, SWIVEL BULLET W/SW BEIGE | 1131580 |
| 120 | AR | EA. | SNAP CAP, PLASTIC WHEAT MATTE | 1139500 |
| 121 | AR | EA. | SCREW, TAPPING #10A X X 1 1/2" POH | 1008515 |
| 122 | AR | EA. | SNAP CAP, PLASTIC WASHER | 1031319 |
| 123 | 1 | EA. | CUSH, HEADLINER UNDER | 1126283 |
| 124 | 1 | EA. | CUSH, HEADLINER CTR AFT | 1123595 |
| 125 | 1 | EA. | CUSH, HEADLINER CENTER FWD | 1123611 |
| 126 | 1 | EA. | CUSH, HEADLINER UNDER | 1126259 |
| 127 | 1 | EA. | CUSH, HEADLINER AFT BERTH | 1126275 |
| 128 | 1 | EA. | CUSH, HEADLINER AFT BERTH | 1126267 |
| 129 | 1 | EA. | CUSH, HEADLINER AFT BERTH | 1126242 |
| 130 | 1 | EA. | PLY, MIDCABIN PORT | 1123587 |
| NOT SHOWN | | | | |
| 10 | EA. | MOLDING, VINYL (L) OFF-WHT W/ADH. | 1020924 | |
| 1 | EA. | SHOWER UNIT | 22181500 | |
| 1 | EA. | SHOWER, FLOOR COVER | 22182700 | |
| 1 | EA. | HATCH LIFT PIN | 1143460 | |
| 1 | EA. | BOLSTER, CABIN STBRD | 1123637 | |
| 1 | EA. | CUSH, HEADLINER BASE | 1123553 | |

Boston Whaler, Inc.

DWG. NO. PB280CQ11



UNLESS OTHERWISE SPECIFIED:
 DIMENSIONS ARE IN INCHES
 TOLERANCES
 DECIMALS ANGULAR
 ± .X ± X
 ± .XX ± .XX
 DO NOT SCALE DRAWING

ASSEMBLY & PARTS IDENT. DOCUMENT

SCALE: NONE DRAWN: T.J.L.
 DATE: 7/3/99 CHKD.:
 DESIGN:
 MFG.:



ENGINEERING DEPARTMENT
 TITLE: 28' CONQUEST CONSOLE ASSEMBLY

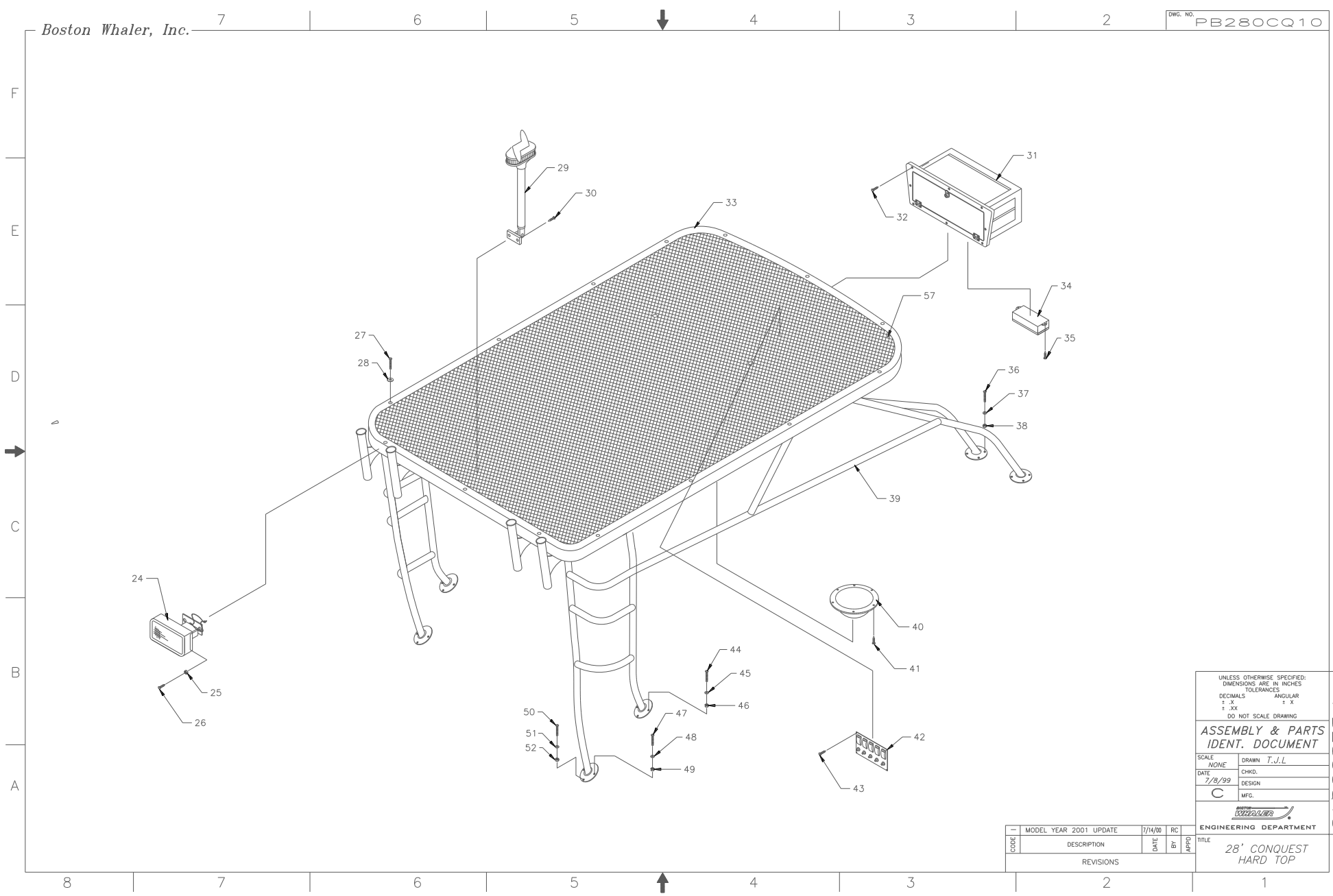
| CODE | DESCRIPTION | DATE | BY | RC | APPRO |
|-----------|------------------------|---------|----|----|-------|
| | MODEL YEAR 2001 UPDATE | 7/14/00 | | | |
| REVISIONS | | | | | |

DWG. NO. PB280CQ11

B

Boston Whaler, Inc.

DWG. NO. PB280CQ10



UNLESS OTHERWISE SPECIFIED:
 DIMENSIONS ARE IN INCHES
 TOLERANCES
 DECIMALS ANGULAR
 ± .X ± X
 ± .XX ± .X
 DO NOT SCALE DRAWING

**ASSEMBLY & PARTS
 IDENT. DOCUMENT**

SCALE: NONE DRAWN: T.J.L.
 DATE: 7/8/99 CHKD.:
 DESIGN:
 MFG.: C

BOSTON WHALER
 ENGINEERING DEPARTMENT

| CODE | DESCRIPTION | DATE | BY | APPROV. |
|-----------|------------------------|---------|----|---------|
| — | MODEL YEAR 2001 UPDATE | 7/14/00 | RC | |
| REVISIONS | | | | |

TITLE
**28' CONQUEST
 HARD TOP**

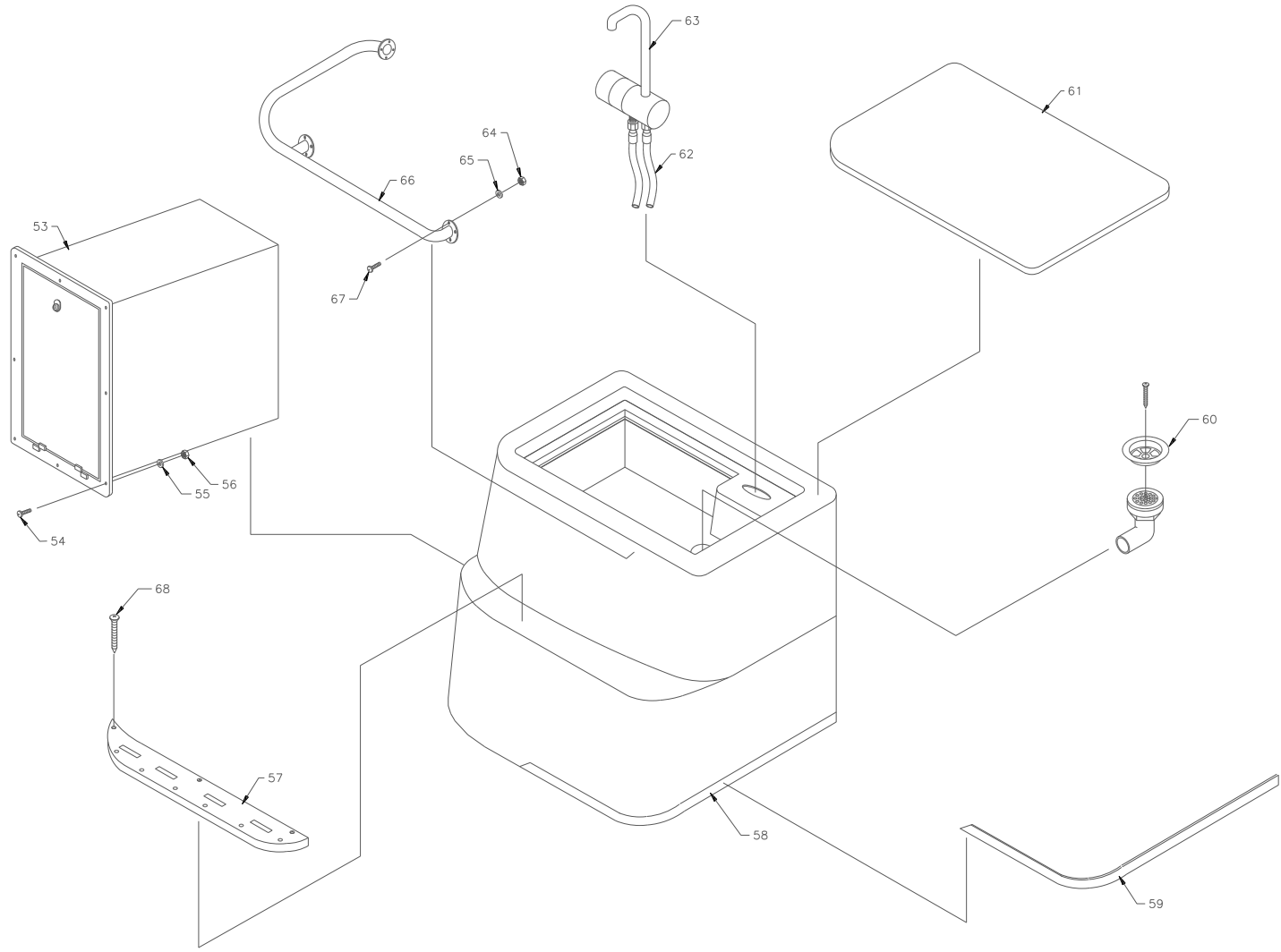
DWG. NO. PB280CQ10

Boston Whaler, Inc.

DWG. NO. PB280CQ12

F
E
D
C
B
A

8 7 6 5 4 3 2 1



UNLESS OTHERWISE SPECIFIED:
DIMENSIONS ARE IN INCHES
TOLERANCES
DECIMALS ANGULAR
± .X ± X
± .XX ± .XX
DO NOT SCALE DRAWING

**ASSEMBLY & PARTS
IDENT. DOCUMENT**

SCALE: NONE DRAWN: T.J.L.
DATE: 7/7/99 CHKD.:
DESIGN:
MFG.:
C

BOSTON WHALER
ENGINEERING DEPARTMENT

| | | | |
|------------|-------------|---------|----|
| MODEL YEAR | 2001 UPDATE | 7/14/00 | LS |
| CODE | DESCRIPTION | DATE | BY |
| REVISIONS | | APPROD | |

TITLE: 28' CONQUEST
OPTIONAL
PREP STATION

DWG. NO. PB280CQ12

