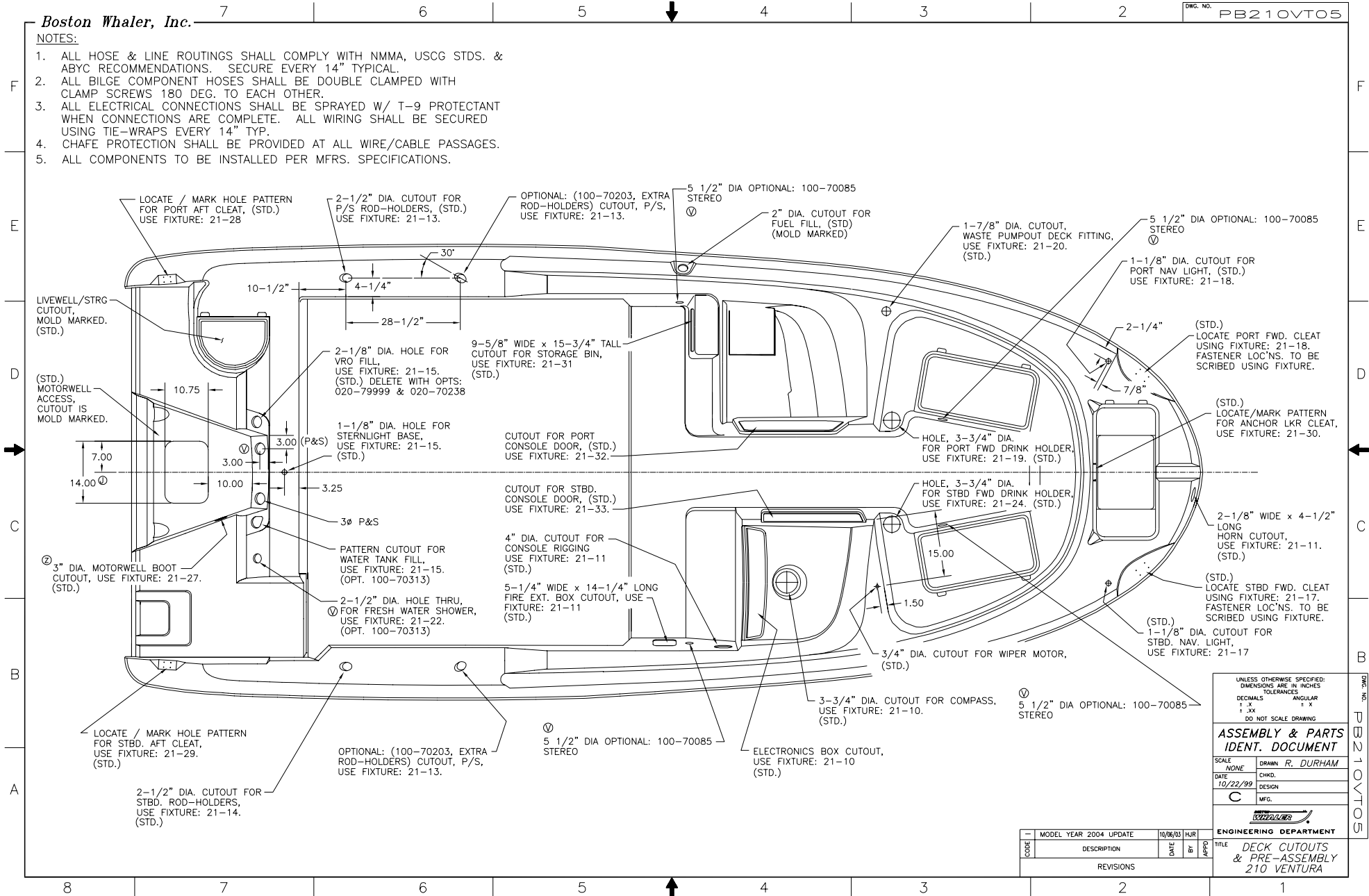


Boston Whaler, Inc.

DWG. NO. PB210VTO5

NOTES:

1. ALL HOSE & LINE ROUTINGS SHALL COMPLY WITH NMMA, USCG STDS. & ABYC RECOMMENDATIONS. SECURE EVERY 14" TYPICAL.
2. ALL BILGE COMPONENT HOSES SHALL BE DOUBLE CLAMPED WITH CLAMP SCREWS 180 DEG. TO EACH OTHER.
3. ALL ELECTRICAL CONNECTIONS SHALL BE SPRAYED W/ T-9 PROTECTANT WHEN CONNECTIONS ARE COMPLETE. ALL WIRING SHALL BE SECURED USING TIE-WRAPPS EVERY 14" TYP.
4. CHAFE PROTECTION SHALL BE PROVIDED AT ALL WIRE/CABLE PASSAGES.
5. ALL COMPONENTS TO BE INSTALLED PER MFRS. SPECIFICATIONS.



UNLESS OTHERWISE SPECIFIED:
DIMENSIONS ARE IN INCHES
TOLERANCES
DECIMAL ANGULAR
± .004 ± .5°
DO NOT SCALE DRAWING

ASSEMBLY & PARTS IDENT. DOCUMENT

SCALE	NONE	DRAWN	R. DURHAM
DATE	10/22/99	CHKD.	
		DESIGN	
		MFG.	

ENGINEERING DEPARTMENT

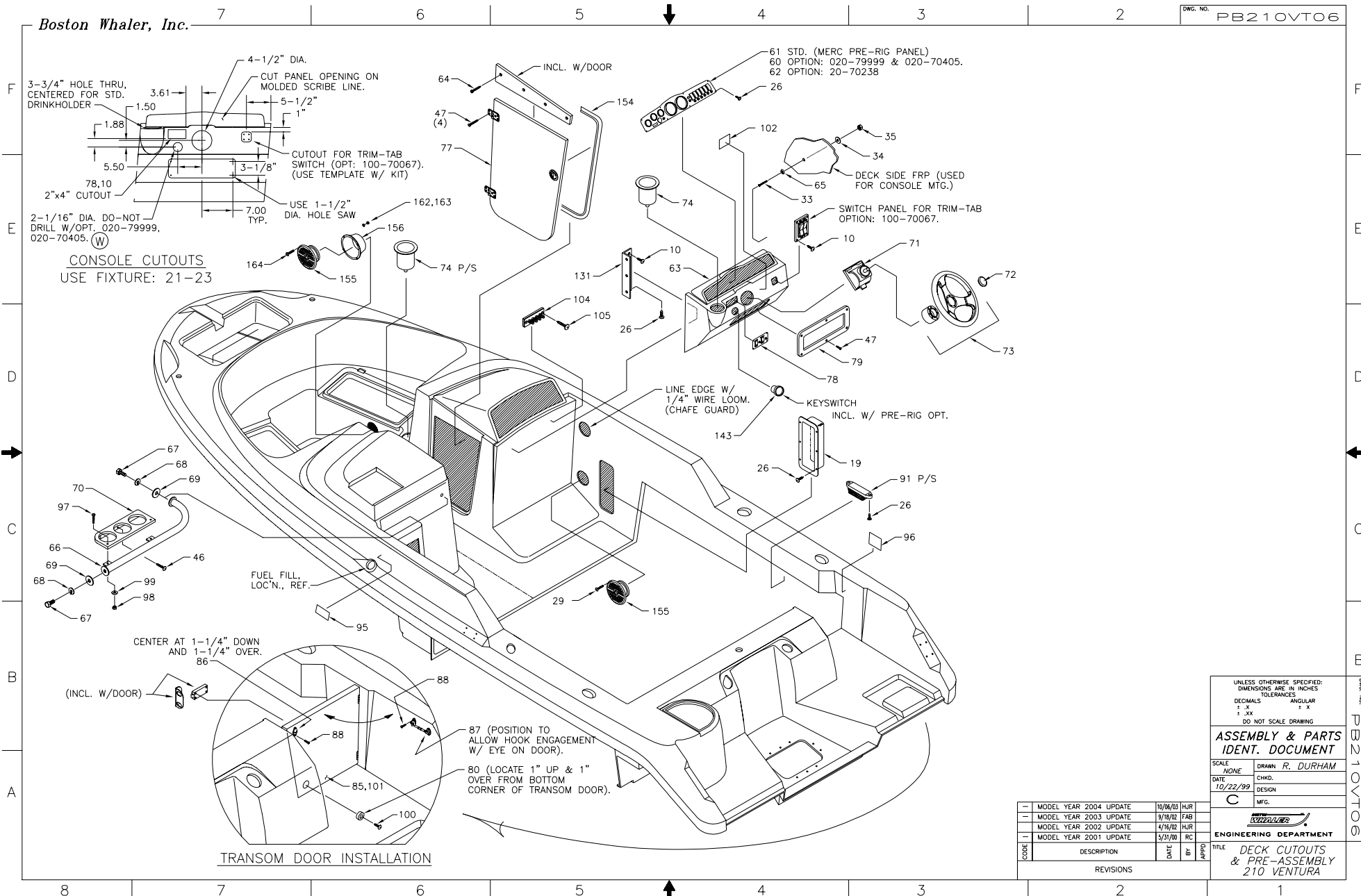
MODEL YEAR	2004 UPDATE	M/16/03	HJR
DESCRIPTION		DATE	BY
REVISIONS		APPD	

TITLE: **DECK CUTOUTS & PRE-ASSEMBLY 210 VENTURA**

DWG. NO. PB210VTO5

Boston Whaler, Inc.

DWG. NO. PB210VTO6



UNLESS OTHERWISE SPECIFIED:
DIMENSIONS ARE IN INCHES
TOLERANCES

DECIMALS	ANGULAR
± .005	± .5
± .010	± .5

DO NOT SCALE DRAWING

ASSEMBLY & PARTS IDENT. DOCUMENT

SCALE	DRAWN	CHKD.
NONE	R. DURHAM	
DATE	DESIGN	
10/22/99		
	MFG.	

ENGINEERING DEPARTMENT

CODE	DESCRIPTION	DATE	BY	APPRO

TITLE **DECK CUTOUTS & PRE-ASSEMBLY 210 VENTURA**

MODEL YEAR 2004 UPDATE	10/06/03	HJR
MODEL YEAR 2003 UPDATE	9/16/02	FAB
MODEL YEAR 2002 UPDATE	4/16/02	HJR
MODEL YEAR 2001 UPDATE	5/31/00	RC

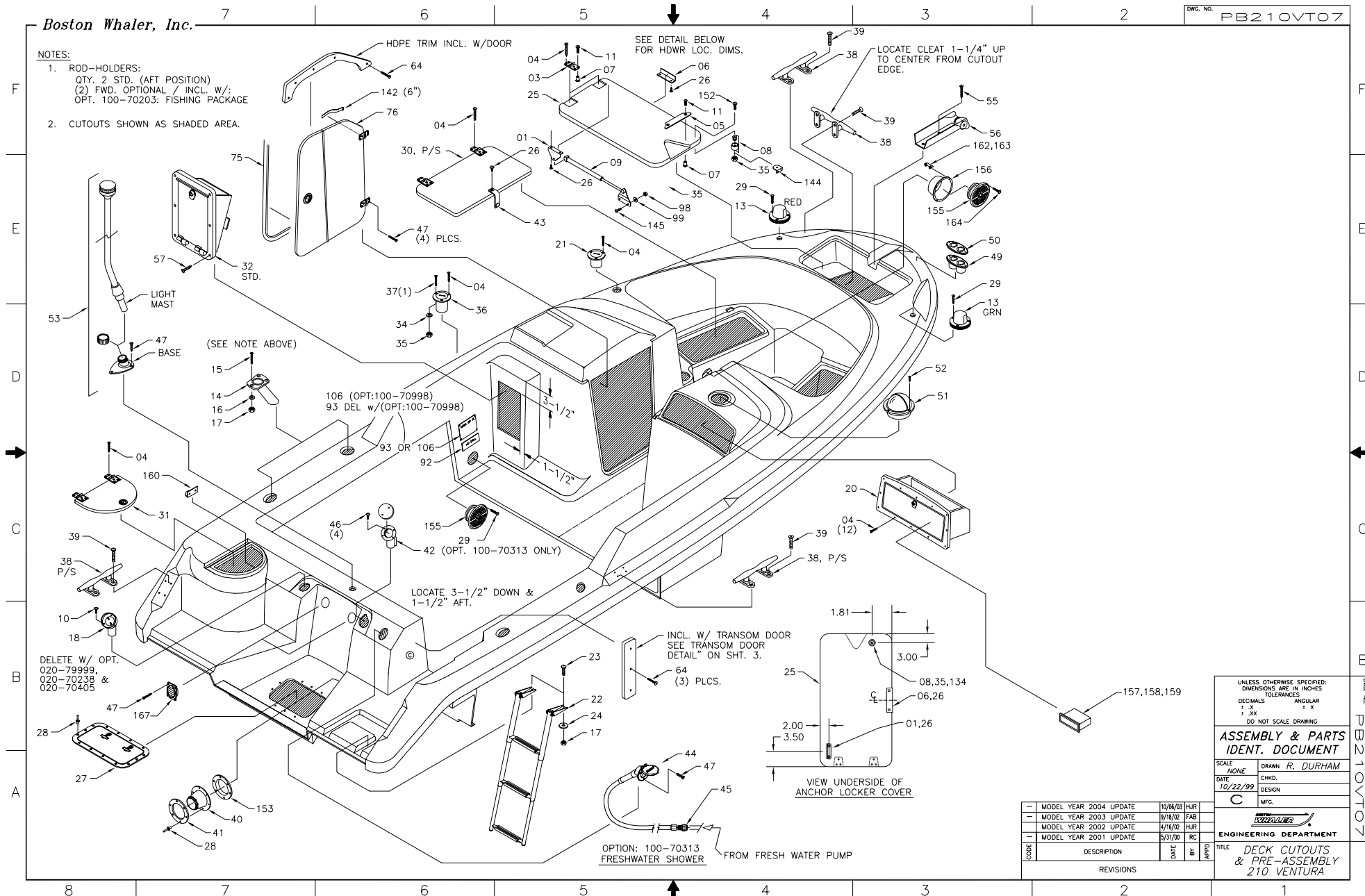
REVISIONS

Boston Whaler, Inc.

DWG. NO. PB210VTO7

NOTES:

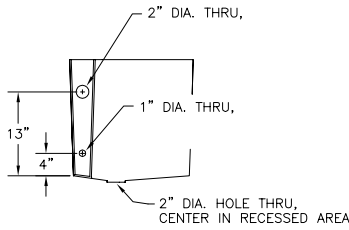
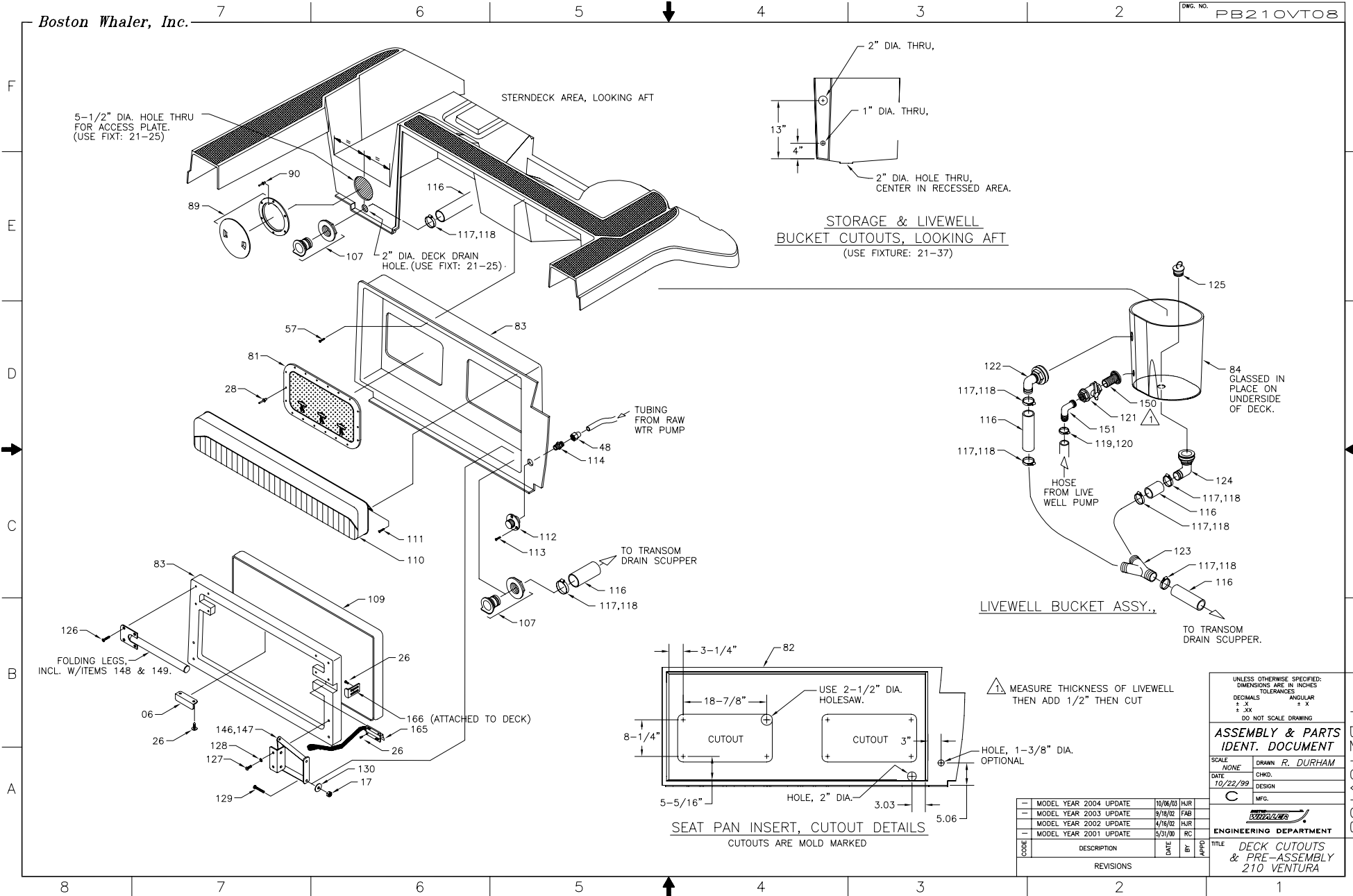
1. ROD-HOLDERS:
QTY. 2 STD. (AFT POSITION)
(2) FWD. OPTIONAL / INCL. W/
OPT. 100-70203: FISHING PACKAGE
2. CUTOUTS SHOWN AS SHADED AREA.



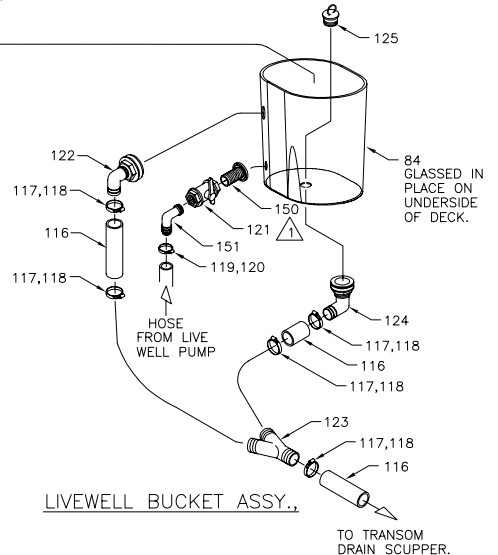
UNLESS OTHERWISE SPECIFIED: DIMENSIONS ARE IN INCHES TOLERANCES DECIMALS ANGULAR ± .XX ± X DO NOT SCALE DRAWING			
ASSEMBLY & PARTS IDENT. DOCUMENT			
SCALE	DRAWN	CHKD.	DATE
NONE	R. DURHAM		10/22/99
DATE	BY	APPD	RC
10/22/99			
C MFG.			
ENGINEERING DEPARTMENT			
TITLE DECK CUTOUTS & PRE-ASSEMBLY 210 VENTURA			
REVISIONS			
MODEL YEAR 2004 UPDATE	10/06/03	HJR	
MODEL YEAR 2003 UPDATE	9/18/02	FAB	
MODEL YEAR 2002 UPDATE	4/16/02	HJR	
MODEL YEAR 2001 UPDATE	5/31/00	RC	

Boston Whaler, Inc.

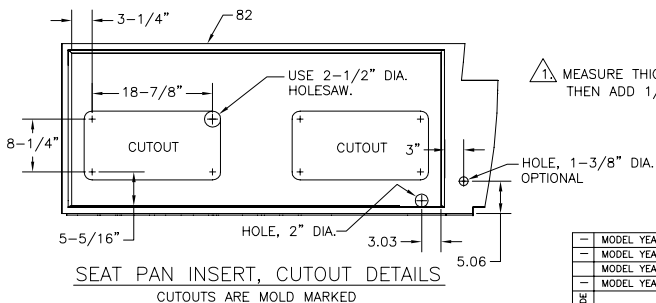
DWG. NO. PB210VTO8



STORAGE & LIVEWELL
BUCKET CUTOUTS, LOOKING AFT
(USE FIXTURE: 21-37)



LIVEWELL BUCKET ASSY.,
TO TRANSOM DRAIN SCUPPER.



SEAT PAN INSERT, CUTOUT DETAILS
CUTOUTS ARE MOLD MARKED

UNLESS OTHERWISE SPECIFIED:
DIMENSIONS ARE IN INCHES
TOLERANCES

DECIMALS	ANGULAR
± .005	± .5°
DO NOT SCALE DRAWING	
ASSEMBLY & PARTS IDENT. DOCUMENT	
SCALE: NONE	CHKD. R. DURHAM
DATE: 10/22/99	DESIGN
C	MFG.

ENGINEERING DEPARTMENT

TITLE: DECK CUTOUTS & PRE-ASSEMBLY 210 VENTURA

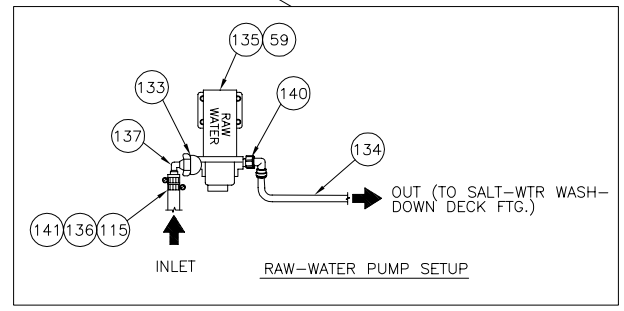
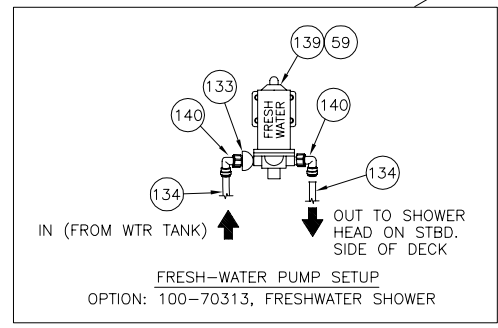
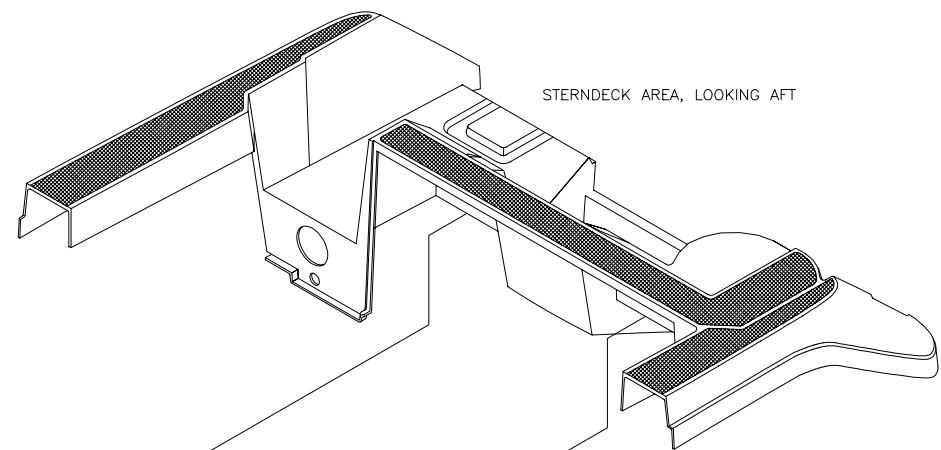
MODEL YEAR	DESCRIPTION	DATE	BY	APPD
MODEL YEAR 2004 UPDATE		10/06/03	HJR	
MODEL YEAR 2003 UPDATE		9/18/02	FAB	
MODEL YEAR 2002 UPDATE		4/16/02	HJR	
MODEL YEAR 2001 UPDATE		5/31/00	RC	

DWG. NO. PB210VTO8

Boston Whaler, Inc.

DWG. NO. PB210VTO9

STERNDECK AREA, LOOKING AFT



UNLESS OTHERWISE SPECIFIED:
DIMENSIONS ARE IN INCHES
TOLERANCES
DECIMALS ± .X
ANGULAR ± X
° ± .XX
DO NOT SCALE DRAWING

ASSEMBLY & PARTS IDENT. DOCUMENT

SCALE	NONE	CHKD.	
DATE	10/22/99	DESIGN	
	C	MFG.	

ENGINEERING DEPARTMENT

TITLE **DECK CUTOUTS & PRE-ASSEMBLY 210 VENTURA**

CODE	DESCRIPTION	DATE	BY	APPD
—	MODEL YEAR 2004 UPDATE	10/06/03	HJR	
—	MODEL YEAR 2003 UPDATE	9/18/03	FAB	
—	MODEL YEAR 2002 UPDATE	4/16/02	HJR	
—	MODEL YEAR 2001 UPDATE	6/5/00	RC	
REVISIONS				

Grid lines: 7, 6, 5, 4, 3, 2 (top); F, E, D, C, B, A (left); 8, 7, 6, 5, 4, 3, 2, 1 (bottom)

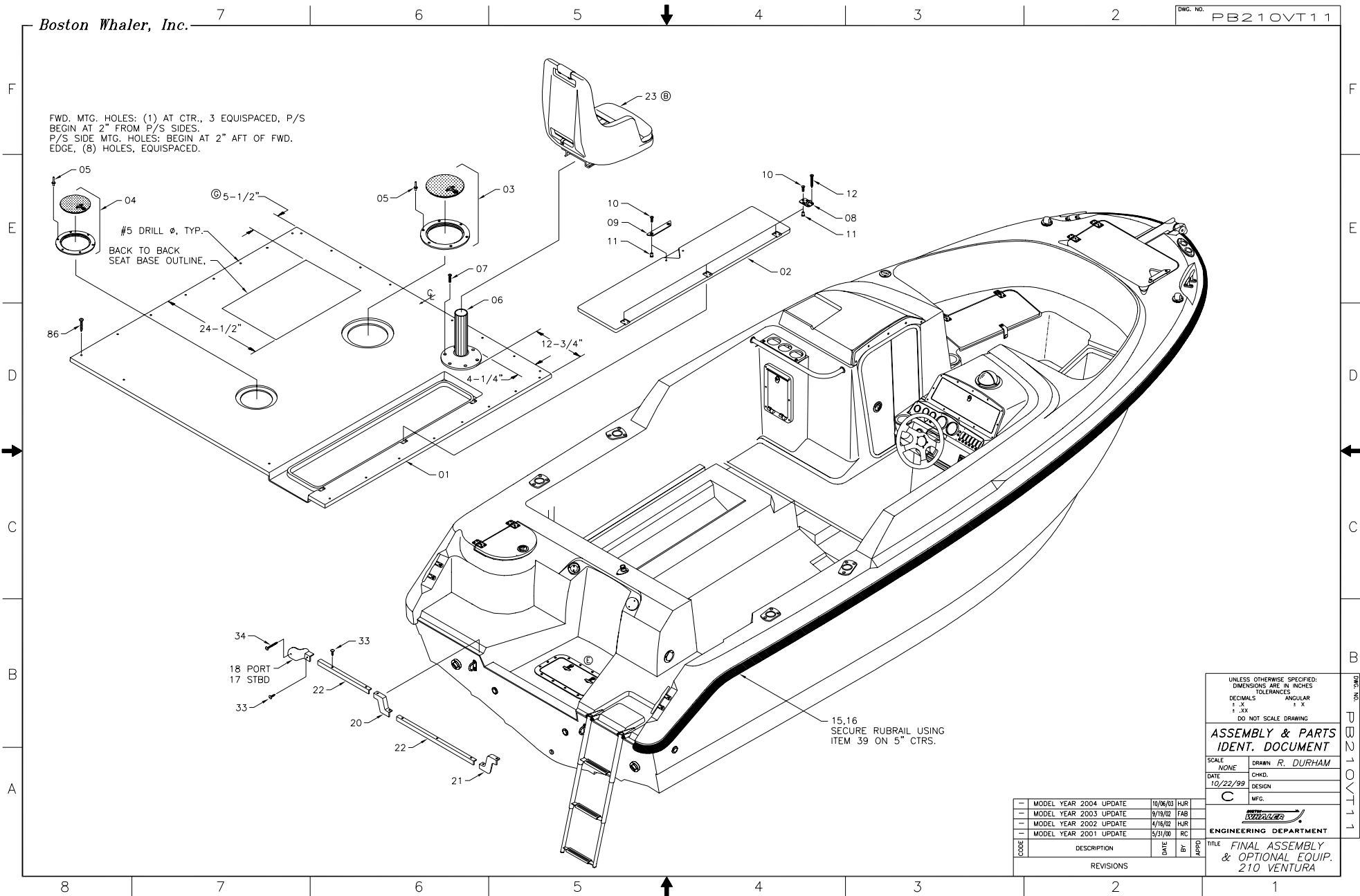
MODEL YEAR 2004 PARTS LIST

QTY	UNIT	DESCRIPTION	UNIT NO.
01	EA	BRACKET, SS LFT CYL ROD/070 W/STUD RT	0817676
02	EA	BRACKET, SS LFT CYL OFFSET W/STUD	0995004
03	EA	HINGE, DOOR, SS 1 1/2 X 1 1/2 THIN	1613303
04	EA	SCREEN, TAPPING #10A X 1 1/4 PTH SC	1008507
05	EA	HATCH, 15.5 X 18.5 WHI	1014457
06	EA	FRAM, BW2100-37 ANCHOR LOCK EDGE	1044597
07	EA	NUT, HEX NYLON LOCK #1/4-20 SC	1045177
08	EA	NYL, HEX NYLON LOCK #1/4-20 SC	1114343
09	EA	CYLINDER, GAS 20PSI TIGHT X 7/32MP	1263236
10	EA	SCREEN, TAPPING #8A X 0.75 PTH SC	1010529
11	EA	SCREEN, MACHINE #10-24 X 5/8 PTH SC	1010540
12	EA	SCREEN, TAPPING #8A X 0.75 PTH SC	1010536
13	EA	PR, LIGHT, NAV SURF HORIZ MT CHR	896466
14	EA	HO, HIDER, KUSH W/SS W/BL LOG	151743
15	EA	SCREEN, MACHINE #1/4-20 X 1 1/4 PTH SC	0133744
16	EA	WASHER, FLAT #10 SS	0152926
17	EA	NYL, HEX NYLON LOCK #1/4-20 SC	1007744
18	EA	ASC PART, MERC OIL FIL KIT (BECK)	0733105
19	EA	BO, ABS, FRT EXT SHIRT WHI	1037655
20	EA	BO, HOPE BW210V-39 ELECTRONICS W/BOOK	1294339
21	EA	EXP FUEL, W/SS BU, O-RING W/IN SYMB	1752439
22	EA	LADDER, SWIM 3-STEP TELESCOPE	1034669
23	EA	SCREEN, MACHINE #1/4-20 X 1 1/4 PTH SC	1062925
24	EA	WASHER, FLAT #10 SS	0152926
25	EA	FIBERGLASS PART ANCHOR LOCKER COVER	22042600
26	EA	SCREEN, TAPPING #8A X 1/2 PTH SC	1008517
27	EA	HATCH, UTILITY 15.5 X 18.5 WHI	1718600
28	EA	NUT, NYLON #1/2 X 3/8 ALUM	1008415
29	EA	SCREEN, TAPPING #4A X 1 PTH SC	1010531
30	EA	SCREEN, HOPE BW210V-03 BOW STRE CREAM	1726245
31	EA	COVER, HOPE BW210V-03 W/ANCH SS	1726245
32	EA	BN, HOPE/FLX BW210/240/200K-36 SEAM	1062920
33	EA	SCREEN, MACHINE #10-24 X 1 1/4 PTH SC	0151549
34	EA	WASHER, FLAT #10 SS	0152926
35	EA	NYL, HEX NYLON LOCK #10-24 SC	1007777
36	EA	DECK PLATE, GAS SS RED CLR-CODE	1109313
37	EA	SCREEN, MACHINE #10-24 X 1 PTH SC	1010549
38	EA	CLEAT, B 4-BOLT SS	261658
39	EA	SCREEN, MACHINE #1/4-20 X 1 1/4 PTH SC	1062925
40	EA	BOO, CABLE 3' BLK	1043330
41	EA	BOO, CABLE RING 3' BLK	1043330
42	EA	DECK PLATE, WATER GRP W/OVENT 45DEG	1057494
43	EA	STRAP, BW1700A-37 W/S HOLD OPEN	1055220
44	EA	WASHER/SPACER, THT W/HT 8/16 LOGO	1055220
45	EA	ADAPTER, SEATECH STRAIGHT 1/2 NPT-15MM	1542919
46	EA	SCREEN, TAPPING #10 X 1 1/4 PTH SC	1008507
47	EA	SCREEN, TAPPING #8A X 3/4 PTH SC	1233037
48	EA	NYL, HEX NYLON LOCK #1/4-20 SC	0152926
49	EA	HO, DR, BK W/ANCHOR LOCKER SS	1143343
50	EA	HO, GRILL, DUAL SS OVERLAY SERIES 84	1401736
51	EA	WASHER, FLAT #10 SS	0152926
52	EA	SCREEN, TAPPING #8A X 1/2 PTH SC	1010532
53	EA	LIGHT, STRIP, 12" X 18" BLK	1502531
54	EA	CHAM, PLATE, BOW SS	1634443
55	EA	SCREEN, MACHINE #1/4-20 X 1 1/4 PTH SC	0151549
56	EA	ANCHOR, BW2100-37 BOW	1034669
57	EA	SCREEN, TAPPING #10A X 1 1/4 PTH SC	0882653
58	EA	FRAM, BW2100-37 W/ANCHOR	1044597
59	EA	SCREEN, TAPPING #10A X 1 1/4 PTH SC	1068747
60	EA	PANEL, BUNKER/LOV-03 W/STITCHES	1719452
61	EA	PANEL, BW210V-03 INST MERC-1000	1719450
62	EA	PANEL, BW210V-03 INST MERC ANVLOG	1719449
63	EA	FIBERGLASS PART CONSOLE	2201200
64	EA	SCREEN, TAPPING #8A X 1 1/4 PTH SC	0150871
65	EA	WASHER, FLAT #10 SS	0892920
66	EA	RAL, GRAB CONSOLE PORT SS	1271907
67	EA	SCREEN, CAP #1/4-18 X 1 1/4 HEX HD SC	1008507
68	EA	WASHER, LOCK/SPLIT #10 SS	0152926
69	EA	SCREEN, TAPPING #8A X 1 1/4 PTH SC	1008507
70	EA	HOLDER, FLEX BW210V-00 DRINK CNSL	1290134
71	EA	STEERING, REW MARK, SEA STAK	1027057
72	EA	STEERING, REW MARK, SEA STAK	1027057
73	EA	STEERING, WHEEL 15" DIA ALUM SPRK	1730448
74	EA	DRUM/DRUM, BLK W/OHNT DEP 10" BLK	1747419
75	EA	TRAILER, 17" W/3" B BULL LOC-A	1356576
76	EA	SCREEN, TAPPING #8A X 1 1/4 PTH SC	1008507
77	EA	DOOR, HOPE BW210V-03 CNL ACCESS SIB	1727633
78	EA	PANEL, BUNKER/LOV-03 W/STITCHES	1719452
79	EA	TRIM, HOPE BW2100-38 CNL STRG	1027255
80	EA	BUMPER, BLACK	1039239
81	EA	HATCH, UTILITY 15 1/2 X 23" WHI	0892920
82	EA	FIBERGLASS PART SEAT PAN INSERT	2238100
83	EA	FIBERGLASS PART SEAT PAN BASE	2238101
84	EA	FIBERGLASS PART SEAT PAN BASE	2238200
85	EA	DOOR, HOPE BW210V-03 TRINK SEAM	1726245
86	EA	HOOK, CABIN DOOR EYE ONLY	0936348
87	EA	SCREEN, CABIN DOOR EYE ONLY	0936348
88	EA	SCREEN, CABIN DOOR EYE ONLY	0936348
89	EA	ACCESS, PLATE, POLYPROP TWIST OUT 3'	1016163
90	EA	HO, DR, BK W/ANCHOR LOCKER SS	0189415
91	EA	LIGHT, COURTESY SURF W/HT CLR/2ND	1062935
92	EA	HO, DR, BK W/ANCHOR LOCKER SS	0189415
93	EA	PLATE, NUMA 02-BW210V	1619857
94	EA	PLATE, WARNING FUEL HAZARD	0932704
95	EA	PLATE, WARNING FUEL HAZARD	0932704
96	EA	LABEL, BW WARNING TRANSOM DOOR	1017144
97	EA	SCREEN, MACHINE #1/4-20 X 1 1/4 PTH SC	1008507
98	EA	NYL, LOCK #10-24 SC	1009927
99	EA	SCREEN, MACHINE #1/4-20 X 1 1/4 PTH SC	1008507
100	EA	SCREEN, TAPPING #10A X 3/4 PTH SC	1008702
101	EA	LABEL, BW SAFETY HI PERF BOAT	1017136
102	EA	SCREEN, MACHINE #1/4-20 X 1 1/4 PTH SC	1008507
103	EA	SCREEN, MACHINE #1/4-20 X 1 1/4 PTH SC	1008507
104	EA	SS, BAR, BONDING SYSTEM	1031738
105	EA	SCREEN, TAPPING #8A X 1 1/4 PTH SC	1008507
106	EA	FLANGE, BUSH, 1.5" - FLANGE W/BARB	1012826
107	EA	THRU-HULL, PLAS 1.5" - FLANGE W/BARB	1012826
108	EA	SCREEN, MACHINE #1/4-20 X 1 1/4 PTH SC	1008507
109	EA	CUSH, BW210V-02 STERN SEAT	1624241
110	EA	NYL, HEX NYLON LOCK #10-24 SC	1007777
111	EA	SCREEN, TAPPING #8A X 1/2 PTH SC	1008517
112	EA	FITTING, RAW W/HT OUTLET SS	1718600
113	EA	SCREEN, MACHINE #1/4-20 X 1 1/4 PTH SC	1008507
114	EA	ADAPTER, SEATECH STRAIGHT 1/2 NPT-15MM	1542919
115	EA	SCREEN, MACHINE #1/4-20 X 1 1/4 PTH SC	1008507
116	EA	HOSE, SMOOTH WALL 1 1/2"	0128244
117	EA	COVER, CLAMP END PROF 1 1/2" X 0.45"	0830998
118	EA	COVER, CLAMP END PROF 1 1/2" X 0.45"	0830998
119	EA	COMP, HOPE END PROF 1 1/2" X 0.45"	0830998
120	EA	COMP, HOPE END PROF 1 1/2" X 0.45"	0830998
121	EA	VALVE, MARLON BALL 3/4 WAY 3/2"	1237959
122	EA	THRU-HULL, PLAS 1 1/2" - FLANGE W/SCREEN	1237959
123	EA	COUPLING, PLAS 1 1/2" - FLANGE W/SCREEN	1041458
124	EA	FLANG, ELBOW 30DEG 1.5" W/FLANGE NUT	0907279
125	EA	FLANG, ELBOW 30DEG 1.5" W/FLANGE NUT	0907279
126	EA	SCREEN, MACHINE #1/4-20 X 1 1/4 PTH SC	1008507
127	EA	SCREEN, MACHINE #1/4-20 X 1 1/4 PTH SC	1008507
128	EA	WASHER, FLAT #10 SS	0152926
129	EA	WASHER, FLAT #10 SS	0152926
130	EA	WASHER, FENDER 1 1/4" X 1.25" SS	0180365
131	EA	THRU-HULL, PLAS 3/4" WHI	1619857
132	EA	THRU-HULL, PLAS 3/4" WHI	1619857
133	EA	SCREEN, MACHINE #10-24 X 1 1/4 PTH SC	1010549
134	EA	SCREEN, MACHINE #10-24 X 1 1/4 PTH SC	1010549
135	EA	SCREEN, MACHINE #10-24 X 1 1/4 PTH SC	1010549
136	EA	SCREEN, MACHINE #10-24 X 1 1/4 PTH SC	1010549
137	EA	SCREEN, MACHINE #10-24 X 1 1/4 PTH SC	1010549
138	EA	SCREEN, MACHINE #10-24 X 1 1/4 PTH SC	1010549
139	EA	SCREEN, MACHINE #10-24 X 1 1/4 PTH SC	1010549
140	EA	SCREEN, MACHINE #10-24 X 1 1/4 PTH SC	1010549
141	EA	SCREEN, MACHINE #10-24 X 1 1/4 PTH SC	1010549
142	EA	SCREEN, MACHINE #10-24 X 1 1/4 PTH SC	1010549
143	EA	SCREEN, MACHINE #10-24 X 1 1/4 PTH SC	1010549
144	EA	BRACKET, DOOR STOP SS	1442680
145	EA	SCREEN, MACHINE #8-32 X 1 1/4 PTH SC	1008713
146	EA	HINGE, BWCZ/OR-00 FOLDING SEAT RIGHT	1423981
147	EA	HINGE, BWCZ/OR-00 FOLDING SEAT LEFT	1423953
148	EA	SUPPORT, LEG FLANG STERN ST LEFT	1601525
149	EA	SUPPORT, LEG FLANG STERN ST RIGHT	1601525
150	EA	THRU-HULL, PLAS 3/4" WHI	1619857
151	EA	THRU-HULL, PLAS 3/4" WHI	1619857
152	EA	SCREEN, MACHINE #10-24 X 1 1/4 PTH SC	1010549
153	EA	SCREEN, MACHINE #10-24 X 1 1/4 PTH SC	1010549
154	EA	SCREEN, MACHINE #10-24 X 1 1/4 PTH SC	1010549
155	EA	SCREEN, MACHINE #10-24 X 1 1/4 PTH SC	1010549
156	EA	SCREEN, MACHINE #10-24 X 1 1/4 PTH SC	1010549
157	EA	SCREEN, MACHINE #10-24 X 1 1/4 PTH SC	1010549
158	EA	SCREEN, MACHINE #10-24 X 1 1/4 PTH SC	1010549
159	EA	SCREEN, MACHINE #10-24 X 1 1/4 PTH SC	1010549
160	EA	SCREEN, MACHINE #10-24 X 1 1/4 PTH SC	1010549
161	EA	SCREEN, MACHINE #10-24 X 1 1/4 PTH SC	1010549
162	EA	SCREEN, MACHINE #10-24 X 1 1/4 PTH SC	1010549
163	EA	SCREEN, MACHINE #10-24 X 1 1/4 PTH SC	1010549
164	EA	SCREEN, MACHINE #10-24 X 1 1/4 PTH SC	1010549
165	EA	SCREEN, MACHINE #10-24 X 1 1/4 PTH SC	1010549
166	EA	SCREEN, MACHINE #10-24 X 1 1/4 PTH SC	1010549
167	EA	SCREEN, MACHINE #10-24 X 1 1/4 PTH SC	1010549

Boston Whaler, Inc.

DWG. NO. PB21OVT11

FWD. MTG. HOLES: (1) AT CTR., 3 EQUISPACED, P/S
 BEGIN AT 2" FROM P/S SIDES.
 P/S SIDE MTG. HOLES: BEGIN AT 2" AFT OF FWD.
 EDGE, (8) HOLES, EQUISPACED.



UNLESS OTHERWISE SPECIFIED:
 DIMENSIONS ARE IN INCHES
 TOLERANCES

DECIMALS	ANGULAR
± .X	± X
± .XX	

DO NOT SCALE DRAWING

ASSEMBLY & PARTS IDENT. DOCUMENT

SCALE	DRAWN	R. DURHAM
NONE	CHKD.	
DATE	DESIGN	
10/22/99	MFG.	

ENGINEERING DEPARTMENT

TITLE: FINAL ASSEMBLY & OPTIONAL EQUIP. 210 VENTURA

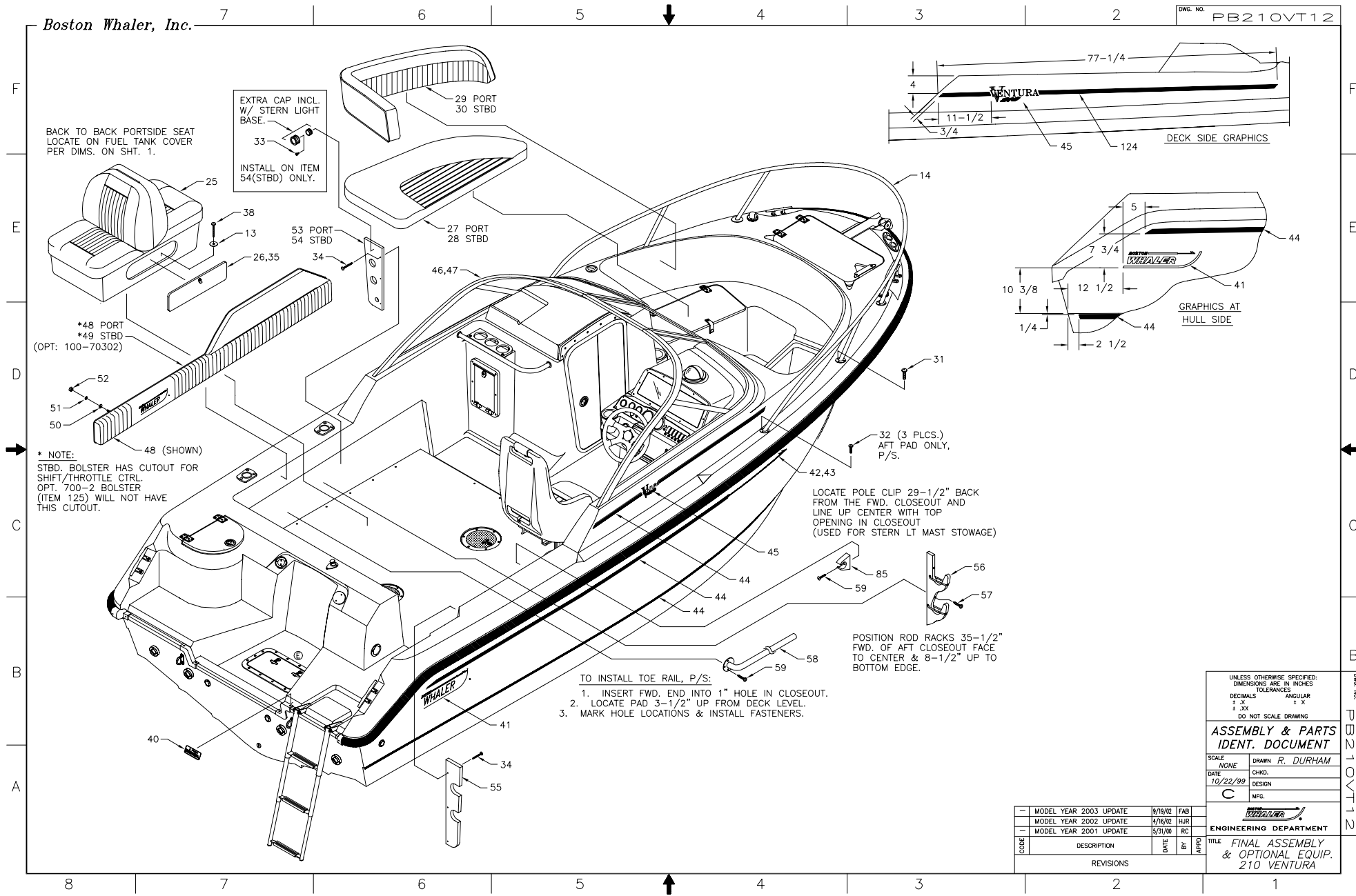
CODE	DESCRIPTION	DATE	BY	APPD
-	MODEL YEAR 2004 UPDATE	10/06/03	HJR	
-	MODEL YEAR 2003 UPDATE	9/19/02	FAB	
-	MODEL YEAR 2002 UPDATE	4/16/02	HJR	
-	MODEL YEAR 2001 UPDATE	5/31/00	RC	

REVISIONS

DWG. NO. PB21OVT11

Boston Whaler, Inc.

DWG. NO. PB21OVT12



BACK TO BACK PORTSIDE SEAT LOCATE ON FUEL TANK COVER PER DIMS. ON SHT. 1.

EXTRA CAP INCL. W/ STERN LIGHT BASE.
33
INSTALL ON ITEM 54(STBD) ONLY.

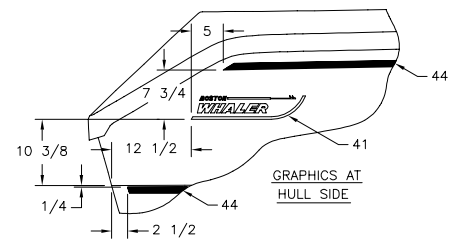
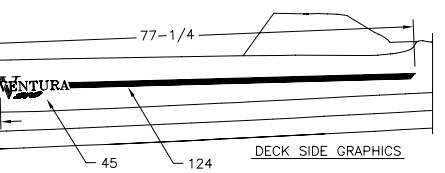
*48 PORT
*49 STBD
(OPT: 100-70302)

* NOTE:
STBD. BOLSTER HAS CUTOUT FOR SHIFT/THROTTLE CTRL.
OPT. 700-2 BOLSTER (ITEM 125) WILL NOT HAVE THIS CUTOUT.

LOCATE POLE CLIP 29-1/2" BACK FROM THE FWD. CLOSEOUT AND LINE UP CENTER WITH TOP OPENING IN CLOSEOUT (USED FOR STERN LT MAST STOWAGE)

POSITION ROD RACKS 35-1/2" FWD. OF AFT CLOSEOUT FACE TO CENTER & 8-1/2" UP TO BOTTOM EDGE.

TO INSTALL TOE RAIL, P/S:
1. INSERT FWD. END INTO 1" HOLE IN CLOSEOUT.
2. LOCATE PAD 3-1/2" UP FROM DECK LEVEL.
3. MARK HOLE LOCATIONS & INSTALL FASTENERS.



UNLESS OTHERWISE SPECIFIED:
DIMENSIONS ARE IN INCHES
TOLERANCES
DECIMALS ANGULAR
± .X ± X
± .XX ± X
DO NOT SCALE DRAWING

ASSEMBLY & PARTS IDENT. DOCUMENT

SCALE NONE DRAWN R. DURHAM
DATE 10/22/99 CHKD. RC
DESIGN C MFG.

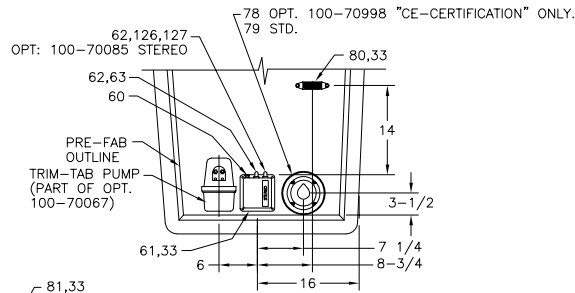
MODEL YEAR	DESCRIPTION	DATE	BY	APPROVED
MODEL YEAR 2003 UPDATE		9/19/02	FAB	
MODEL YEAR 2002 UPDATE		4/16/02	HJR	
MODEL YEAR 2001 UPDATE		5/31/00	RC	
REVISIONS				

ENGINEERING DEPARTMENT
TITLE FINAL ASSEMBLY & OPTIONAL EQUIP. 210 VENTURA

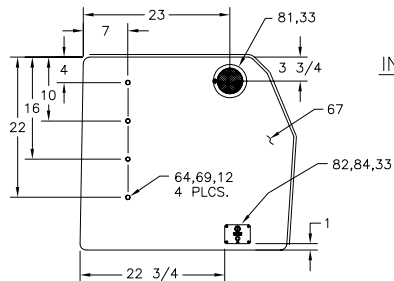
DWG. NO. PB21OVT12

Boston Whaler, Inc.

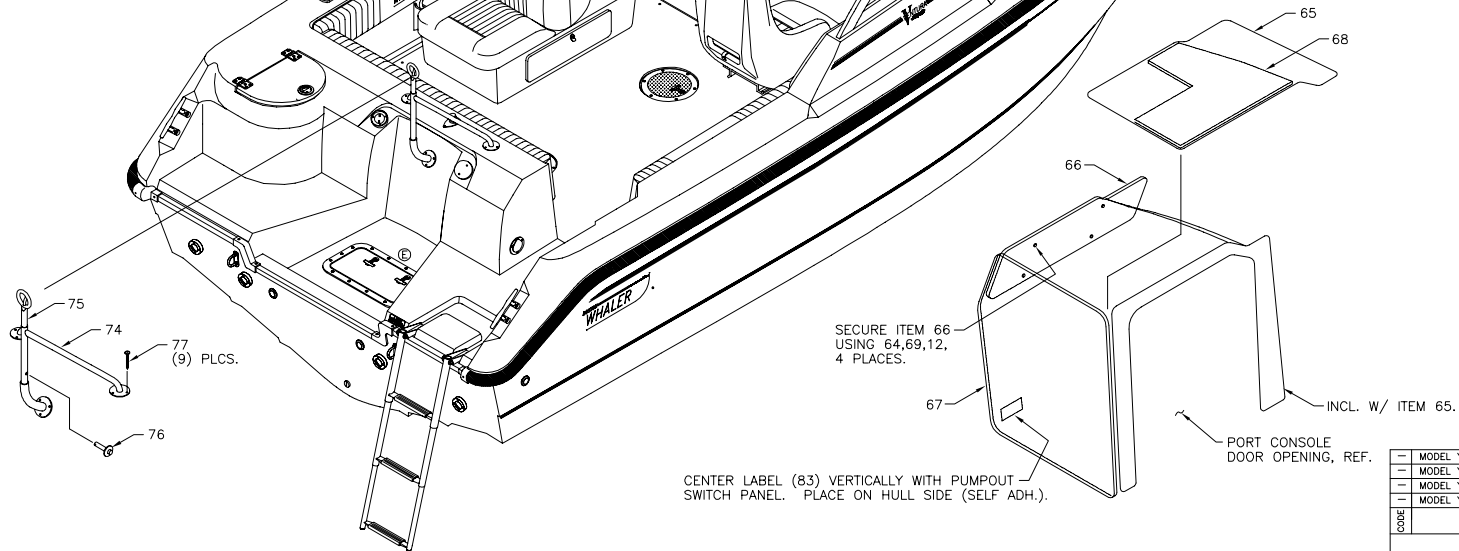
DWG. NO. PB21OVT13



VIEW LOOKING AFT, INSIDE STBD. CONSOLE



VIEW LOOKING AFT, INSIDE PORT CONSOLE



UNLESS OTHERWISE SPECIFIED:
 DIMENSIONS ARE IN INCHES
 TOLERANCES
 DECIMALS ANGULAR
 ± .X ± X
 ± .XX ± X
 DO NOT SCALE DRAWING

ASSEMBLY & PARTS IDENT. DOCUMENT

SCALE	NONE	DRAWN	R. DURHAM
DATE	10/22/99	CHKD.	DESIGN
	C	MFG.	

MODEL YEAR	DESCRIPTION	DATE	BY	APPROV
MODEL YEAR 2004 UPDATE		10/06/03	HJR	
MODEL YEAR 2003 UPDATE		9/18/02	FAB	
MODEL YEAR 2002 UPDATE		4/16/02	HJR	
MODEL YEAR 2001 UPDATE		5/31/00	RC	

ENGINEERING DEPARTMENT

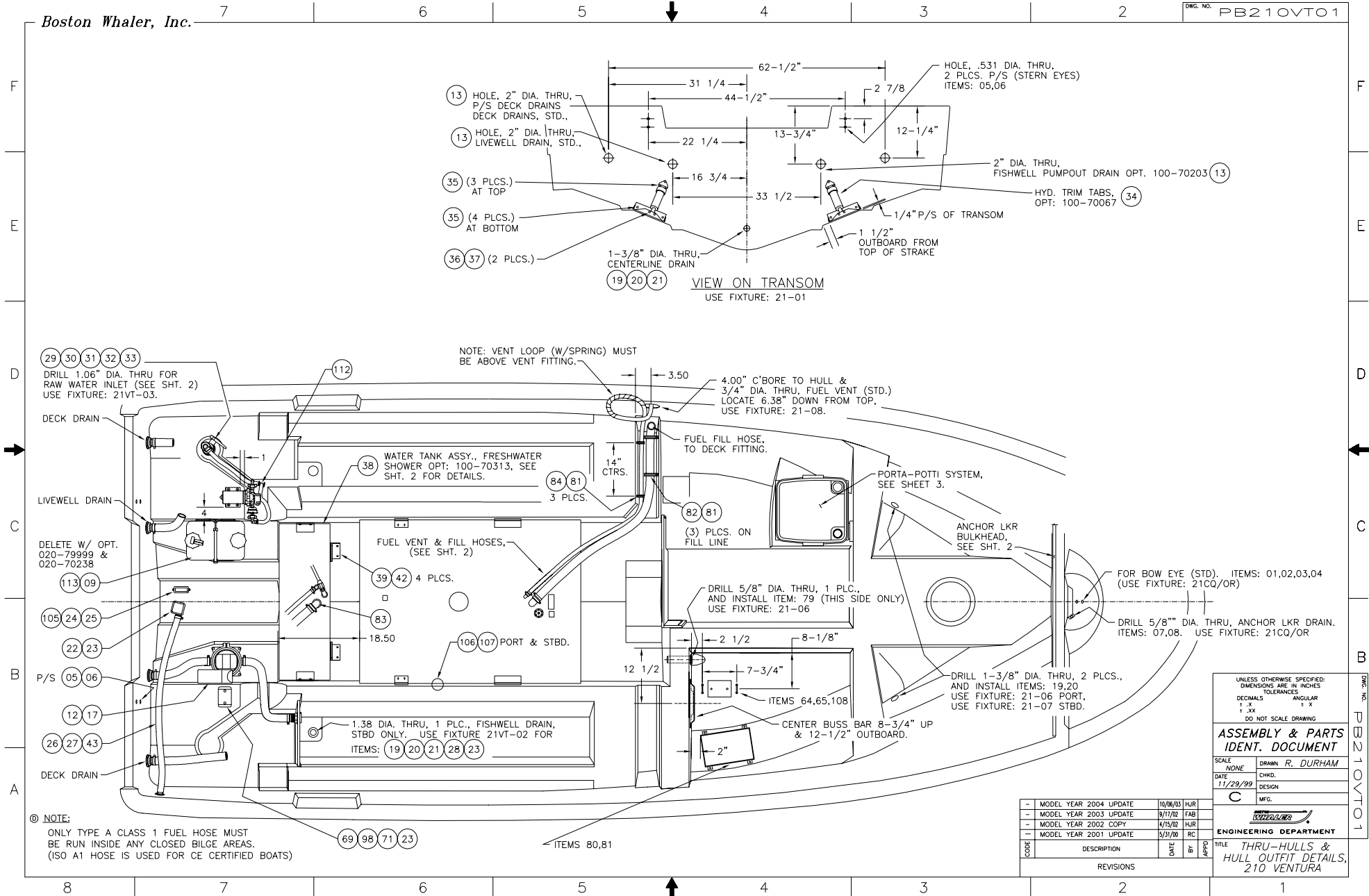
TITLE FINAL ASSEMBLY & OPTIONAL EQUIP. 210 VENTURA

REVISIONS	DESCRIPTION	DATE	BY	APPROV

MODEL YEAR 2004 PARTS LIST

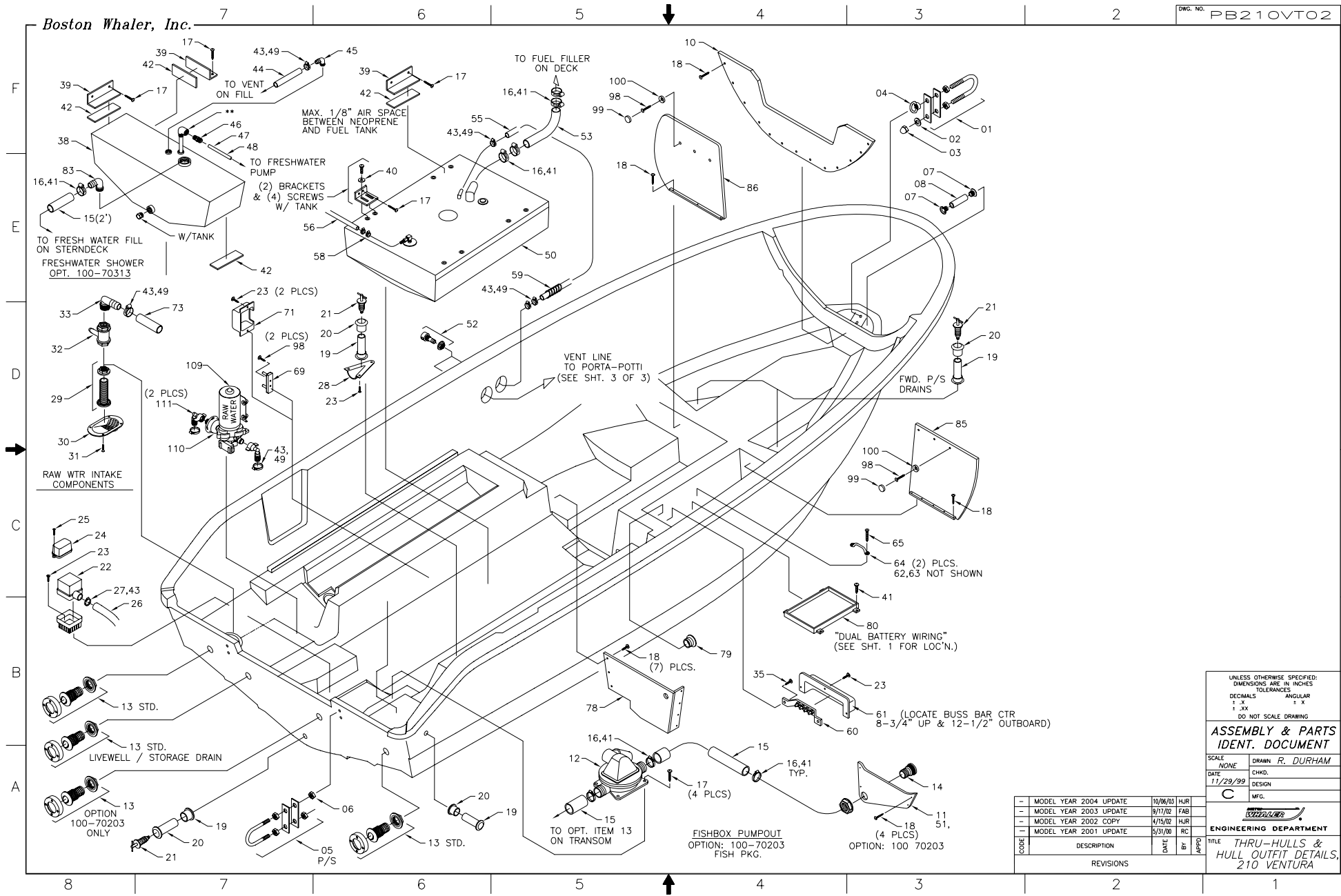
BOAT MODEL: 210 VENTURA
DOCUMENT CONTROL NO: 00210V14

REV	QTY	U/O	DESCRIPTION	BAR NO.
01	1	EA	FIBERGLASS PART, FUEL TANK COVER	22391100
02	1	EA	FIBERGLASS PART, FISHWELL COVER	22388000
03	1	EA	ACCESS PLATE, POLYPROP TWIST OUT 8"	1068659
04	1	EA	ACCESS PLATE, POLYPROP TWIST OUT 6"	1068642
05	12	EA	RIVET, POP/BLIND 3/16 x 5/8" ALUM	0189415
06	2	EA	PEDESTAL, ALUM 1.5" FLUED MILLENNIUM	1611615
07	12	EA	SCREW, MACHINE 1/4-20 x 1.25" PPH	0143206
08	3	EA	HINGE, DOOR SS 1.5" X 3" THINLINE	1617323
09	1	EA	HANDLE, SS HATCH	1014455
10	11	EA	SCREW, MACHINE #10-24 x 5/8" POH SC	1010545
11	11	EA	NUT, BBL #10-24 x 3/8" PPH	1040187
12	14	EA	SCREW, TAPPING #10A x 1" POH	1008507
13	12	EA	WASHER, FENDER 1/4" x 1.25" SS	0183465
14	1	EA	RAIL, BOW BW210VT-99 SS	1266386
15	1	EA	RUBRAL, PLASTIC CHAR 54	1020882
16	1	EA	INSERT, RUBRAL CHAR FLEX 54"	1020841
17	1	EA	CAP, RUBRAL BW210CQ-98 END STBD	1057546
18	1	EA	CAP, RUBRAL BW210CQ-98 END PORT	1057553
19	1	EA	CAP, BOW RUBRAL	1266332
20	1	EA	CAP, END MOTORWELL PORT	1357748
21	1	EA	CAP, END MOTORWELL STBD	1357755
22	7	FT	TRIM, VINYL RIGID 1" x 1.5" BLK	1040948
23	2	EA	SEAT, HELM BW-02 PED W/ CUSH MILLENNI	1611706
24	2	EA	CUSHION, PEDESTAL SEAT W/ B/R WHI	1602336
25	1	EA	CUSH, BW210VT-02 PASS SEAT B/B W/SLIDE	1628510
26	1	EA	DOOR, HOPE LOUNGE SEAT BASE	0384692
27	1	EA	CUSH, BW210VT-02 FWD SEAT PORT	1625417
28	1	EA	CUSH, BW210VT-02 FWD SEAT STBD	1625433
29	1	EA	CUSH, BW210VT-02 FWD SEAT B/R PORT	1625431
30	1	EA	CUSH, BW210VT-02 FWD SEAT B/R PORT	1625409
31	12	EA	SCREW, MACHINE 1/4-20 x 1.5" PPH SC	1008598
32	6	EA	SCREW, MACHINE #10-24 x 1.25" PPH SC	1008630
33	16	EA	SCREW, TAPPING #8A x 5/8" PTH SC	1010925
34	11	EA	SCREW, TAPPING #10A x 1.5" PTH SC	1008747
35	12	EA	SCREW, TAPPING #8A x 3/4" PPH SC	1008408
36	1	EA	CAP, BOW RUB RAIL	1266332
37	2	EA	SCREW, TAPPING #10A x 1.75" POH	1608623
38	6	EA	SCREW, TAPPING #14 x 1.5" PTH SC	1010909
39	150	EA	SCREW, TAPPING #10A x 1.5" PPH SS	1008443
40	1	EA	LABEL, BW WARNING SWIM PLATFORM	1016948
41	1	EA	DECAL, BW-04 LOGO 29" RED PRT (DRP MOLD)	1752941
42	1	EA	DECAL, BW-04 LOGO 29" RED STB (DRP MOLD)	1752942
43	1	EA	DECAL, BW-04 LOGO 29" DK BLUE SIB (DRP MOLD)	1752944
44	1	EA	DECAL, BW-04 LOGO 29" DK BLUE PRT (DRP MOLD)	1752943
45	1	EA	DECAL, BW-04 HARPOON PRT WHLR RED	1752931
46	1	EA	DECAL, BW-04 HARPOON STB WHLR RED	1752933
47	1	EA	DECAL, BW-04 HARPOON SIB DK BLUE	1752932
48	1	EA	DECAL, BW-04 HARPOON SIB DK BLUE	1752935
49	50	FT	TAPE, SOLID 1" RED W/GRY PIN STRIP	1754509
50	50	FT	TAPE, SOLID 1" DK BLUE W/GRY PIN STRIP	1754510
51	2	EA	DECAL, BW-04 Z10VT GRY (DRP MOLD)	1753514
52	2	EA	DECAL, BW-02 VENTURA 210 CORN DK BLUE	1621234
53	1	EA	W/S, BW210VT-02	1616531
54	1	EA	STRAP, BW170DA-97 W/S HOLD OPEN	1025220
55	1	EA	BOLSTER, BW210VT-02 CKPT PORT	1625508
56	1	EA	BOLSTER, BW210VT-02 CKPT STBD	1625482
57	50	EA	WASHER, FLAT 1/4" SS	0152926
58	8	EA	WASHER, STAR 1/4" SS	1008909
59	8	EA	NUT, HEX 1/4-20 SS	0152645
60	53	EA	PANEL, HOPE CLOSEOUT PORT FWD	1330521
61	54	EA	PANEL, HOPE CLOSEOUT STBD FWD	1330539
62	55	EA	PANEL, HOPE CLOSEOUT STBD AFT	1319763
63	56	EA	ROD-HOLDER, HDPE UNDER GUNWALE	1334390
64	57	EA	SCREW, TAPPING #10A x 2" POH	1609651
65	2	EA	RAIL, GRAB BW210R-99 TOE	1124742
66	9	EA	SCREW, TAPPING #10A x 1" PTH SC	1008739
67	60	EA	BRKR SWITCH/PUSH BUTTON 50A ETA	1032457
68	1	EA	BOX, ABS BW-57 HARNESS	1037630
69	1	EA	BOOT, RESET BRKR CLEAR	1066547
70	1	EA	BRKR, MANUAL RESET 5A	0670497
71	64	EA	SNAP CAP, PLAS CLEAR WASHER	1246727
72	65	EA	CUSH, HEADLINER CNSL PORT	1271857
73	66	EA	CUSH, HEADLINER CNSL SIDE PORT	1327980
74	67	EA	CUSH, HEADLINER CNSL AFT PORT	1327988
75	68	EA	CUSH, HEADLINER CNSL FILLER	1340772
76	69	EA	SNAP CAP, PLAS WHI	1031301
77	70	EA	CONTROL, SER MNT PISTOL GRIP 4000 GEN II O/B	1752910
78	71	EA	CONTROL, CONVERTER KIT MERC/MORSE	0698720
79	72	EA	CABLE, CONTROL MERC GEN II PLAT 16"	1753101
80	73	EA	HARNES, IGN/CHOKE ASSY, 20"	1032788
81	74	EA	SKI-TOW PYLON RAIL SS	1311711
82	75	EA	SKI-TOW PYLON, SS 18.5"	1363837
83	76	EA	PIN, QUICK RELEASE 1.25"	1031426
84	77	EA	SCREW, TAPPING #10A x 1.5" PPH	1010610
85	78	EA	SWITCH, BATTERY SELECTOR W/O LOCK W/O DISC	162693
86	79	EA	SWITCH, BTRY SELECTOR W/O LOCK W/O DISC	0162693
87	80	EA	LIGHT, COURTESY SLIP MNT OLB/GROUND	0932355
88	81	EA	LIGHT, DOME EXTERIOR 4" WHI	0996488
89	82	EA	SWITCH, WASTE PUMP W/KEY	1444074
90	83	EA	LABEL, NOTICE OVERBOARD DISCHARGE	0955278
91	84	EA	PANEL, BW-02 (2SA) PORTA-POT W/OVRBD DISCHRG	1718975
92	85	EA	PR CLIP, POLE STRG BLK MAST LIGHT	0590646
93	86	EA	SCREW, TAPPING #10A x 2" PTH	1608754
NOT SHOWN				
94	1	EA	MANUAL, OWNERS BW VENTURA-00	1297895
95	1	EA	SUPPLEMENT, OWNERS MANUAL 00-BW210VT	1361732
96	1	EA	DIAGRAM, WOOD LOCATION BW210VT-99	1259761
97	1	EA	PACKET, BW OWNERS BAG/BW DOCUMENTS	1031228
98	1	EA	MANUAL, RUBASTIS (PROPELLERS, JET...)	0866444
99	2	EA	KEY, DECK PLATE CAP	0522599
100	1	EA	STEERING, HYD CYLINDER O/B PIVOT MNT	1085728
101	1	EA	STEERING, O/B HOSE KIT 18" W/2 HOSES	1355394
102	1	EA	WIPER BLADE 14" SS CURVED	1019967
103	1	EA	WIPER MOTOR, 65 DEG W/RUBBER GASKET	1405992
104	1	EA	MOUNT, BW210VT-00 W/S WIPER MOTOR	1405984
105	1	EA	WIPER ARM 10-14" SS ADJ	1058783
106	1	EA	COOLER, 25QT	0133346
107	1	EA	CUSHION, BW210VT-02BOW FILLER	1625474
108	1	EA	CANVAS, BW210VT-04 CPC BLK	1753193
109	1	EA	CANVAS, BW210VT-02 CPC BLUE	1623800
110	1	EA	CANVAS, BW210VT-04 DROP CURT BLK	1753190
111	1	EA	CANVAS, BW210VT-02 DROP CURT BLUE	1623743
112	1	EA	CANVAS, BW210VT-04 TONNEAU CVR BLK	1753194
113	1	EA	CANVAS, BW210VT-02 TONNEAU CVR BLUE	1623826
114	1	EA	CANVAS, BW210VT-04 BM TOP W/BOOT BLK	1753188
115	1	EA	CANVAS, BW210VT-04 BM TOP W/BOOT BLUE	1758019
116	1	EA	CANVAS, BW210VT-04 WALK-THRU BLK	1753192
117	1	EA	CANVAS, BW210VT-02 WALK-THRU BLUE	1623784
118	1	EA	CANVAS, BW210VT-04 SIDE CURT SET BLK	1753189
119	1	EA	CANVAS, BW210VT-02 SIDE CURT SET BLUE	1623727
120	1	EA	CANVAS, BW210VT-04 VISOR CURT BLK	1753191
121	1	EA	CANVAS, BW210VT-02 VISOR CURT BLUE	1623768
122	1	EA	LABEL, WARNING CARBON MONOXIDE	1110675
123	1	EA	PLATE, BUILDERS CE 99-BW210VT	1291984
124	13	FT	TAPE, SOLID 3/4" RED W/GRY PIN STRP	1754548
125	13	FT	TAPE, SOLID 3/4" DK BLUE W/GRY PIN STRP	1754549
126	1	EA	BOLSTER, BW210VT-02 CKPT STBD W/O PR	1625490
127	1	EA	BRKR, MANUAL RESET 15A	670471
128	1	EA	LABEL, BW STEREO	1075266



Boston Whaler, Inc.

DWG. NO. PB210VTO2



UNLESS OTHERWISE SPECIFIED: DIMENSIONS ARE IN INCHES TOLERANCES DECIMALS ANGULAR ± .010 ± .5

DO NOT SCALE DRAWING

ASSEMBLY & PARTS IDENT. DOCUMENT

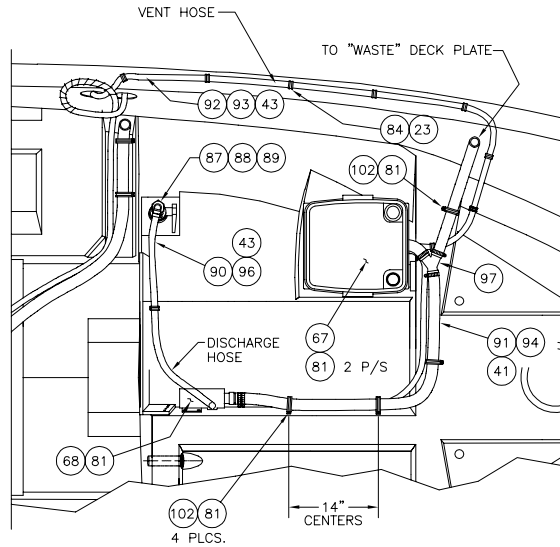
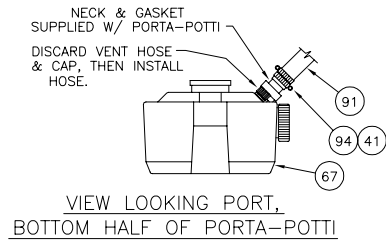
SCALE	NONE	DRAWN	R. DURHAM
DATE	11/29/99	CHKD.	RC
		DESIGN	
		MFG.	

ENGINEERING DEPARTMENT

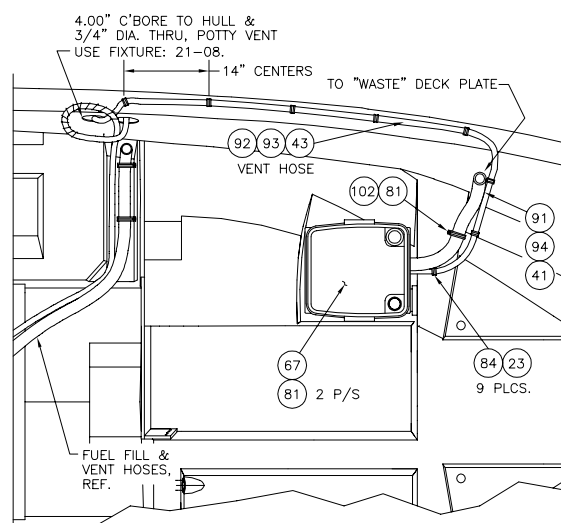
TITLE *THRU-HULLS & HULL OUTFIT DETAILS, 210 VENTURA*

REVISIONS	DESCRIPTION	DATE	BY	APP'D
-	MODEL YEAR 2004 UPDATE	10/06/03	HJR	
-	MODEL YEAR 2003 UPDATE	9/17/02	FAB	
-	MODEL YEAR 2002 COPY	4/15/02	HJR	
-	MODEL YEAR 2001 UPDATE	5/31/00	RC	

DWG. NO. PB210VTO2



PORTA-POTTI W/ PUMPOUT & OVERBOARD DISCHARGE
OPTION: 100-70323



PORTA-POTTI W/ PUMPOUT
STD.

UNLESS OTHERWISE SPECIFIED:
DIMENSIONS ARE IN INCHES

TOLERANCES

DECIMALS ANGULAR

± .X ± X

± .XX ± X

DO NOT SCALE DRAWING

ASSEMBLY & PARTS IDENT. DOCUMENT

SCALE: NONE DRAWN: R. DURHAM

DATE: 11/29/99 CHKD. RC

DESIGN: MFG. C

ENGINEERING DEPARTMENT

TITLE: THRU-HULLS & HULL OUTFIT DETAILS, 210 VENTURA

CODE	DESCRIPTION	DATE	BY	APPD
-	MODEL YEAR 2004 UPDATE	10/06/03	HJR	
-	MODEL YEAR 2003 UPDATE	9/17/02	FAB	
-	MODEL YEAR 2002 UPDATE	4/19/02	HR	
-	MODEL YEAR 2001 UPDATE	5/31/00	RC	

DWG. NO. PB210VT03

MODEL YEAR 2004 PARTS LIST

BOAT MODEL: 210 VENTURA
DOCUMENT CONTROL NO: PB210V04

REV	QTY.	U/M	DESCRIPTION	B.W.I. NO.
01	1	EA.	EYE, BOW 1/2" x 6" SS	0995472
02	1	EA.	WASHER, LOCK SPLIT 1/2" SS	0153684
03	1	EA.	NUT, ACORN 1/2-13 SS	1007756
04	1	EA.	EYE, LIFTING 1/2" SS	1750949
05	2	EA.	EYE, BOW 1/2" x 3-7/16" SS	0126557
06	4	EA.	NUT, HEX NYLON LOCK 1/2-13 SS	0152785
07	2	EA.	DRAIN SLEEVE, FLUSH IMPACT 5/8"	0518878
08	5	FT.	TUBING, WATER LINE 3/8"ID x 1/2"OD	0896605
09	1	EA.	TANK, OIL VRO W/HOWR SV 0/B	1477926
10	1	EA.	PANEL, HDPE CLOSEOUT, ANCHOR LOCKER	1323310
11	1	EA.	CAP, HDPE FISHWELL END	1090612
12	1	EA.	PUMP, HEAD SYS WASTE DIAPHRAGM 12V	1110808
13	4	EA.	THRU-HULL, PLAS 2" SCUPPER W/FLAPPER	0628081
14	1	EA.	DRAIN, CKPT W/SCREEN	0995118
15	10	FT.	HOSE, SANI/SMOOTH WALL 1.5"	0123844
16	12	EA.	CLAMP, HOSE #24 SS	0256693
17	12	EA.	SCREW, TAPPING #14A x 1.5" PTH SC	1010909
18	44	EA.	SCREW, TAPPING #10A x 1.5" PTH SC	1008747
19	6	EA.	THRU-HULL, PVC PRESS FIT	1042084
20	6	EA.	NUT, PVC RETAINING THRU HULL	1042068
21	5	EA.	PLUG, BRASS 1" DRAIN TURN TITE	0133371
22	1	EA.	PUMP, BILGE 1100GPH	1480094
23	9	EA.	SCREW, TAPPING #8A x 5/8" PTH SC	1010925
24	1	EA.	SWITCH, FLOAT RULE W/CVR	0989335
25	2	EA.	SCREW, TAPPING #8A x .75" PPH	1010651
26	5	FT.	HOSE, WATER 1-1/8" BLK	1042076
27	8	EA.	CLAMP, HOSE #16 3/4"-1.5" SS .505	256685
28	1	EA.	VENT, CLAMSHELL ROPE LOCKER 2" x 2"	0533430
29	1	EA.	THRU-HULL BRZ 3/4" W/NUT X-LONG	1032499
30	1	EA.	STRAINER, MARELON 3/4" SCREEN ONLY	0995589
31	4	EA.	SCREW, TAPPING #8A x 3/4" POH SC	1213057
32	1	EA.	VALVE, MARELON BALL 2-WAY 3/4"	0557959
33	1	EA.	ELBOW, MARELON 3/4" MPT X 3/4" BARB 90D	0567958
34	1	EA.	TRIM-TAB ASSY 9x9 BW2100C-98	1058262
35	16	EA.	SCREW, TAPPING #14A x 1.5" PPH SC	1008697
36	4	EA.	SCREW, MACHINE 1/4-20 x 1/2" PPH SC	1010586
37	4	EA.	NUT, LOCK 1/4-20 SC STD PATT	1009786
38	1	EA.	TANK, WATER BW2300C-97 - 20GAL	1033521
39	4	EA.	TANK, BRACKET BWCP270-97 2X 6" 1/4"ALUM	1030469
40	4	EA.	WASHER, FENDER 1/4" x 1.25" SS	0189365
41	16	EA.	COVER, CLAMP END PROT 1/2" x .045"	0830968
42	2	EA.	RUBBER PAD, BW FUEL TANK 1/4" x 2"	1042449
43	14	EA.	COVER, CLAMP END PROT 1/2" L X .035" X .30" RED	830976
44	3	FT.	HOSE, SANI/CHEMICAL TDX 5/8"	0124719
45	1	EA.	ELBOW, MARELON 1" MPT X 1" BARB X 90DEG	0995555
46	1	EA.	ADAPTER, SEATECH STRAIGHT 1/2" MPT - 15MM	1542919
47	1	EA.	NUT/RING/GONE, AGETAL 1/2" TH - 3/8"	0158501
48	10	FT.	TUBING, SEATECH 15MM X 11MM BLUE	1210160
49	13	EA.	CLAMP, HOSE #10 SS	0263954
50	1	EA.	TANK, FUEL - BW 92GAL 210VT/CO-00	1465236
51	5	EA.	PANEL, HDPE CLSOUT FISHWELL SEAM	1486562
52	1	EA.	VENT, FUEL/WATER SS 3/4" FLUSH STRAIGHT	1754881
53	8	FT.	HOSE, FUEL 1.5" TYPE A CLASS 2	0123745
54	8	FT.	HOSE, FUEL 5/8" TYPE A CLASS 2	0123778
55	8	FT.	HOSE, FUEL 5/8" ISO/CE	0947499
56	4	FT.	HOSE, FUEL 3/8" ISO/CE W/PLAS LINER	1497486
57	4	FT.	HOSE, FUEL 3/8" ISO #840-A1	0947473
58	3	EA.	CLAMP, HOSE #06M 5/16"-7/8" SS MINI	0123398
59	1	EA.	SPRING, VENT 1.05" X 12" SS	1041367
60	1	EA.	BUSS BAR, BWCP-97 GRND COPPER	1030626
61	1	EA.	COVER, ABS BW BUSS BAR BLACK	1001197
62	1	EA.	HOLDER, BATTERY GR-27 POWER GUARD	0995068
63	1	EA.	STRAP, 1" x 3" HOLDDOWN BLK	1041126
64	2	EA.	BRACKET, BAIT HOLDDOWN 1.25" C	1042837
65	6	EA.	SCREW, TAPPING #8A x 1" POH SC	1213065
66	1	EA.	HEAD, PORTABLE SANI-POTH GRAY	1038587
67	1	EA.	HEAD, PORTABLE MSD SANI POTTI SLVR	258749
68	1	EA.	PUMP, MACERATOR W/THERMAL PROTECTOR	1624451
69	1	EA.	BUSS BAR, TERM POST 2 5/16 STUDS (ANL FUSE)	1717497
70	4	EA.	SCREW, TAPPING #10A x 1.5" PTH SC	1008747
71	1	EA.	COVER, ABS BW BUSS BAR BLK	1001197
72	1	EA.	PUMP, RAW WATER	1043736
73	13	FT.	HOSE, WATER 3/4" BLK REINF PVC	1042100
74	2	EA.	ELBOW, PVC 1/2" FPT SWIVEL X 3/4" BARB	0626101
75	1	EA.	TEE, AGETAL 1/2" MPT	206003
76	1	EA.	PUMP, FRESH WATER SHURFLO 2.8GPM	0504969
77	2	EA.	ELBOW, AGETAL 1/2" MPT X 1/2" FPT X 90DEG	0122565
78	1	EA.	PANEL, HDPE CLOSEOUT CNSL	1309129
79	1	EA.	DRAIN SLEEVE, FLUSH IMPACT 5/8"	518878
80	1	EA.	HOLDER, BATTERY W/POLY STRAP HOLDN	1058197
81	19	EA.	SCREW, TAPPING #10A x 1" PTH SC	1008739
82	3	EA.	CLIP, SUPPORT 2.25" DIA.	1040344
83	1	EA.	DRAIN, ELBOW 90 DEG 1.5" SHORT THREAD	167514
84	9	EA.	CLIP, SUPPORT 1" DIA.	1216720
85	1	EA.	PANEL, HDPE CLOSEOUT CNSL STBD FWD	1309103
86	1	EA.	PANEL, HDPE CLOSEOUT CNSL PORT FWD	1287267
87	1	EA.	THRU-HULL, BRZ 1" W/NUT X-LONG	1691075
88	1	EA.	VALVE, MARELON BALL 2-WAY 1"	0581355
89	1	EA.	ELBOW, MARELON 1" MPT X 1" BARB X 90DEG	0995555
90	3	FT.	HOSE, GEN PURPOSE 1"	0196667
91	14	FT.	HOSE, SANI-SMOOTH WALL 1.5"	0123844
92	8	FT.	HOSE, SANI/CHEMICAL TDX 5/8"	0124719
93	4	EA.	CLAMP, HOSE #06M 5/16"-7/8" SS MINI	0123398
94	12	EA.	CLAMP, HOSE #24 1" - 2" SS	0256693
95	1	EA.	VENT, FUEL - SANI-3/4" SS STRAIGHT	0889157
96	4	EA.	CLAMP, HOSE #10 1/2"-1-1/8" SS	0263954
97	1	EA.	COUPLING, PLAS Y 1.5"	1041458
98	6	EA.	SCREW, TAPPING #10A x 1" POH	1008507
99	10	EA.	SNAP CAP, PLAS WHT	1031301
100	15	EA.	SNAP CAP, PLAS CLEAR WASHER	1246727
101	1	EA.	SCREW, TAPPING #10A x 1.5" PTH	1010610
102	4	EA.	CLIP, SUPPORT 2.25" DIA	1040344
103	8	EA.	SCREW, TAPPING #8A x 5/8" PTH	1010925
104	2	EA.	FILTER, IN-LINE WATER 1/2" FPT	406710
105	1	EA.	SHIM, HDPE BW-01 FLOAT SWITCH WHT	1470475
106	14	FT.	FOAM, BACKER ROD 1/2" DIA	1041680
107	14	EA.	FOAM, BACKER ROD 5/8" DIA	1041698
108	1	EA.	CLEAR, HDPE BTRY BOX WHT	1618602
109	1	EA.	PUMP, RAW WATER	1043736
110	1	EA.	FILTER, IN-LINE WATER 1/2" FPT	406710
111	2	EA.	ELBOW, PVC 1/2" FPT SWIVEL X 3/4" BARB X 90DEG	0626101
112	1	EA.	TEE, PLAS 3/4" ALL BARB	0995191
113	4	EA.	SCREW, TAPPING #14A x 1" PPH SC	1008689