

THIS DOCUMENT IS THE PROPERTY OF BOSTON WHALER, INC. MFG. DEPT., EDGEWATER, FLORIDA. ALL RIGHTS ARE RESERVED. THIS DOCUMENT AND INFORMATION CONTAINED MUST NOT BE COPIED OR DISCLOSED TO OTHERS WITHOUT WRITTEN PERMISSION OF BOSTON WHALER, INC.

DWG. NO:  
06102

REV.  
C

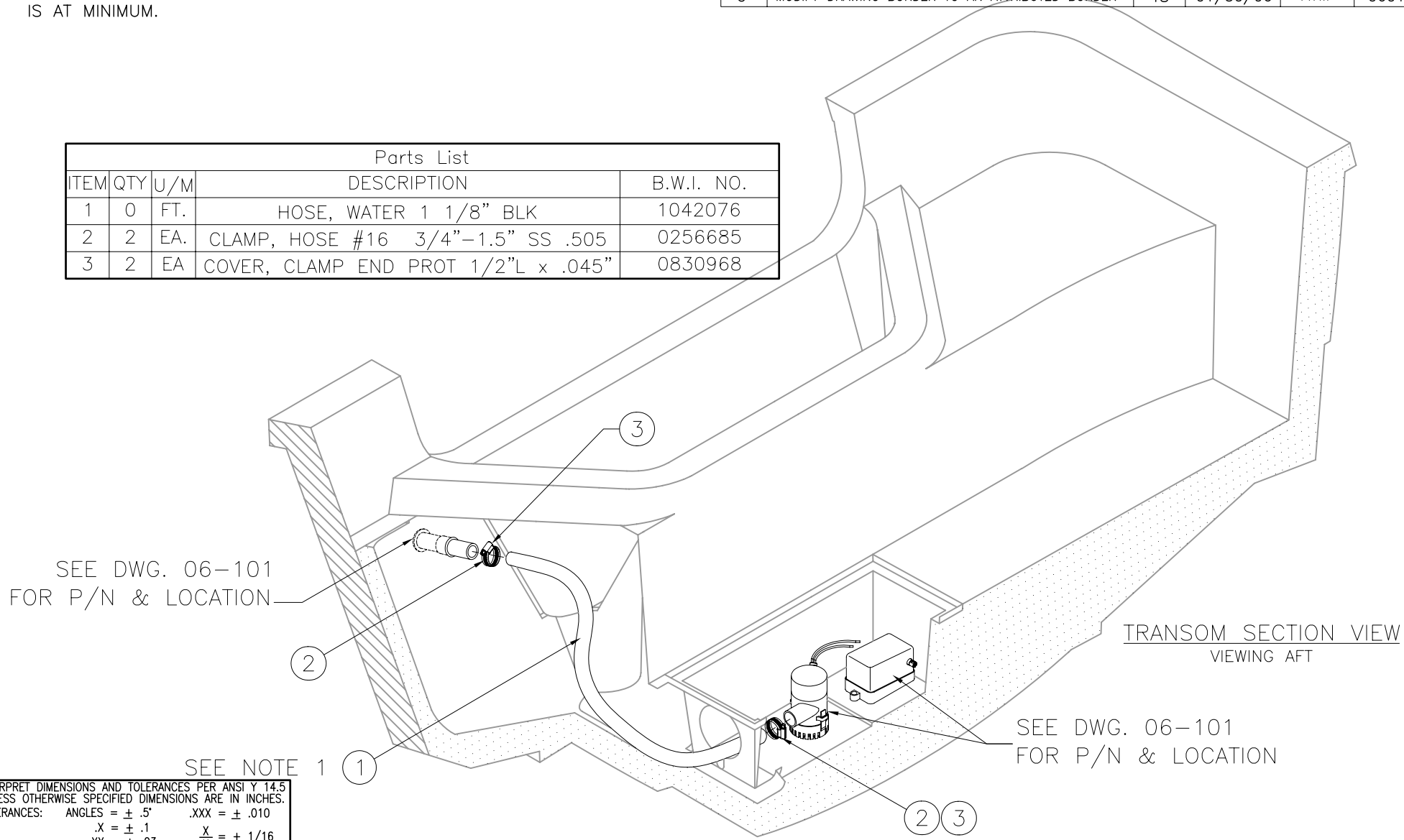
CURRENT ECD  
060132

NOTES:

1. REFER TO DWG. 01-251, HOSE CUT LIST- FOR HOSE LENGTH.
2. ROUTE HOSE SO PRESSURE ON BILGE PUMP IS AT MINIMUM.

REVISIONS					
REV.	DESCR.	BY	DATE	APPVD.	ECN NO.
A	ITEM 3 ADDED.	RD	02/11/02		01-09-76
B	Changed Numbering System/Apply Att.Border.	AVM	04/21/03		03-03-08
C	MODIFY DRAWING BORDER TO AN ATTRIBUTED BORDER	TS	01/30/06	AVM	060132

Parts List				
ITEM	QTY	U/M	DESCRIPTION	B.W.I. NO.
1	0	FT.	HOSE, WATER 1 1/8" BLK	1042076
2	2	EA.	CLAMP, HOSE #16 3/4"-1.5" SS .505	0256685
3	2	EA	COVER, CLAMP END PROT 1/2"L x .045"	0830968



INTERPRET DIMENSIONS AND TOLERANCES PER ANSI Y 14.5 UNLESS OTHERWISE SPECIFIED DIMENSIONS ARE IN INCHES.  
 TOLERANCES: ANGLES = ± .5° .XXX = ± .010  
 .X = ± .1 .XX = ± .03 X = ± 1/16  
 DO NOT SCALE DRAWING



CHECKED: R. AVILA	DATE: 01/31/02	DRAWN: R. CRAVEN	DATE: 01/29/02	SCALE: NONE	BOAT MODEL 17MTK	MOLD NO.
APPD: K. RANIERI	DATE: 01/30/02	DWG. TITLE: BILGE HOSE ASSEMBLY			INIT. REL. ECN NO: 010976	DWG. NO: 06102
DESIGN: L. SCHOLZ	DATE: 01/30/02					SHT. NO. 1 of 1
INT. ENG: M. GATICA	DATE: 02/11/02					

THIS DOCUMENT IS THE PROPERTY OF BOSTON WHALER, INC. MFG. DEPT., EDGEWATER, FLORIDA. ALL RIGHTS ARE RESERVED. THIS DOCUMENT AND INFORMATION CONTAINED MUST NOT BE COPIED OR DISCLOSED TO OTHERS WITHOUT WRITTEN PERMISSION OF BOSTON WHALER, INC.

DWG. NO:  
**09201**

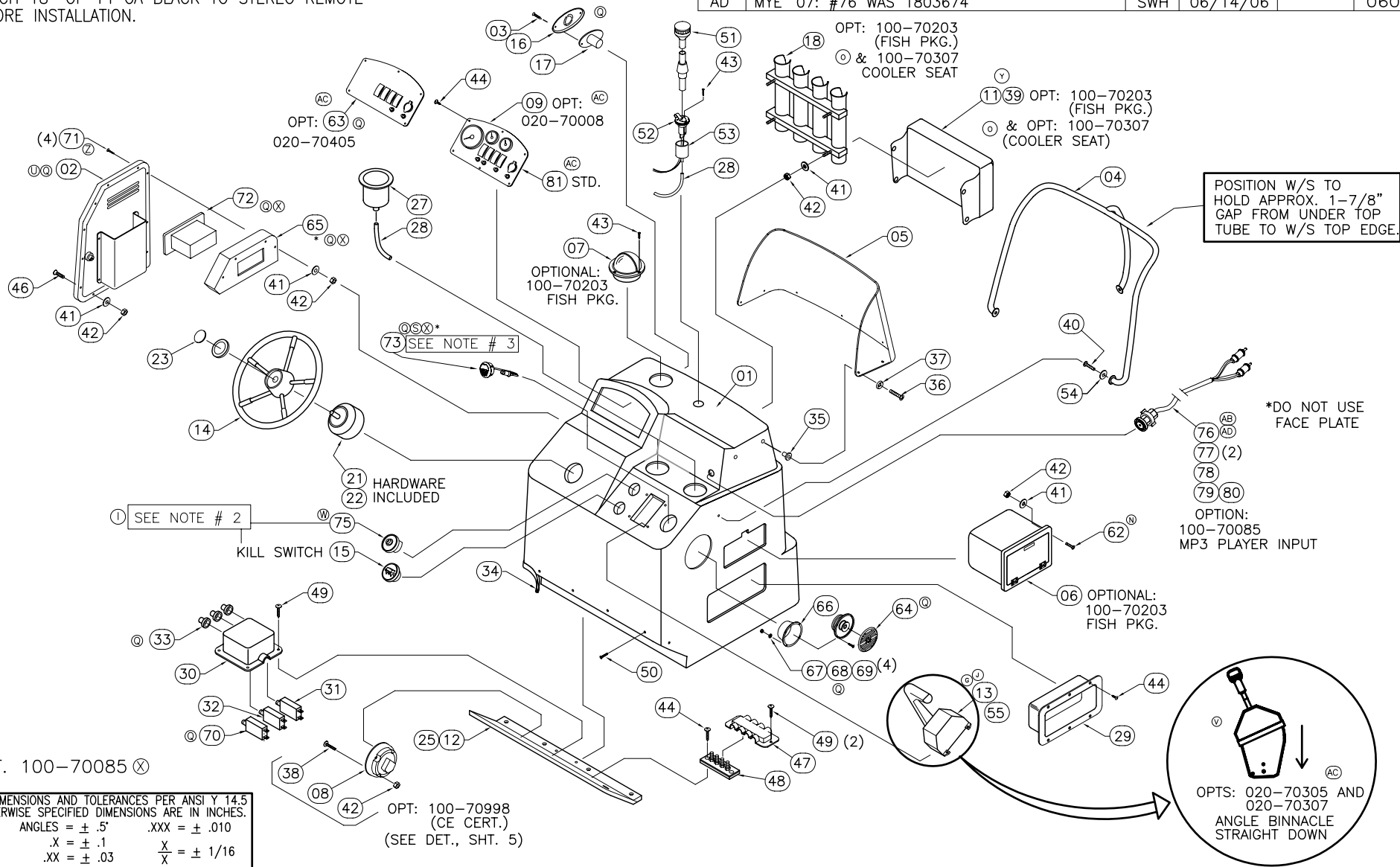
REV.  
**AD**

CURRENT ECD  
**060391**

**NOTES:**

1. REFER TO DWG. 01-251 FOR ALL HOSE CUT LENGTHS.
2. DELETE W/OPT 020-70405
3. DRILL WHEN OPT 020-70405 W/100-70005 IS ORDERED
4. ATTACH 18" OF 14 GA BLACK TO STEREO REMOTE BEFORE INSTALLATION.

REVISIONS					
REV.	DESCR.	BY	DATE	APPVD.	ECN NO.
AA	MODIFY DRAWING BORDER TO AN ATTRIBUTED BORDER	TS	01/23/06	AVM	060132
AB	MYE 2007: #76-81 ADDED	RD	4/12/06	MG	060391
AC	MYE '07: #09 WAS #1802467; #63 WAS 1772711; BINNACLE OPTS CLARIFIED.	RD	5/24/06		060353
AD	MYE '07: #76 WAS 1803674	SWH	06/14/06		060391

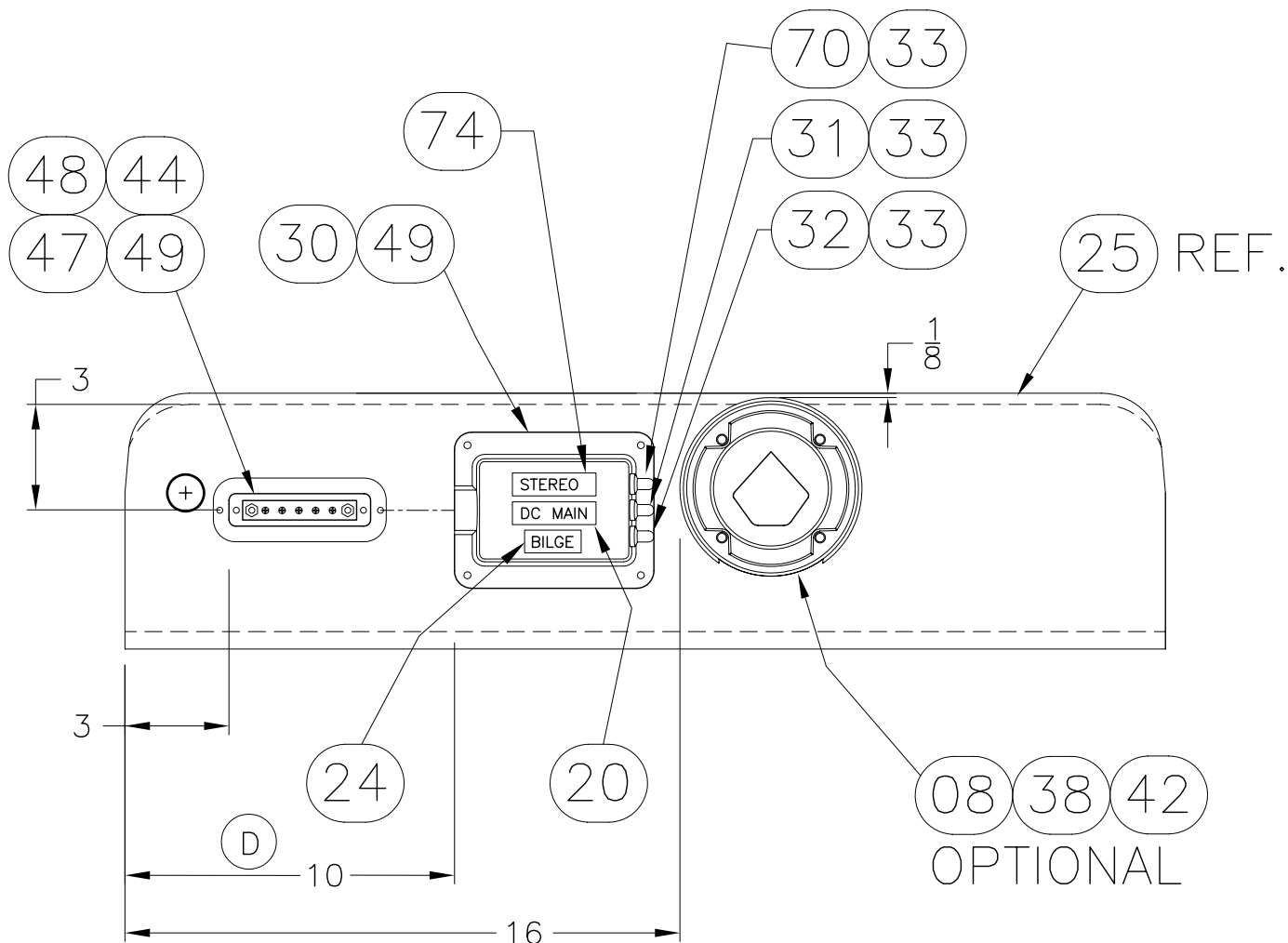


INTERPRET DIMENSIONS AND TOLERANCES PER ANSI Y 14.5 UNLESS OTHERWISE SPECIFIED DIMENSIONS ARE IN INCHES.  
 TOLERANCES: ANGLES = ± .5°    .XXX = ± .010  
 .X = ± .1    X = ± 1/16  
 .XX = ± .03    X = ± 1/16  
 DO NOT SCALE DRAWING



CHECKED: R. AVILA	DATE: 01/24/02	DRAWN: H READ	DATE: 01/02/02	SCALE: NONE	BOAT MODEL <b>17MTK</b>	MOLD NO.
APPD: K. RANIERI	DATE: 01/24/02	DWG. TITLE: <b>CONSOLE ASSEMBLY</b>			INIT. REL. ECN NO: <b>010976</b>	DWG. NO: <b>09201</b>
DESIGN: L. SCHOLZ	DATE: 01/25/02				DWG. NO: <b>09201</b>	SHT. NO. <b>1 OF 4</b>
INT. ENG: M. GATICA	DATE: 02/11/02					

NOTES:



# CONSOLE CLOSEOUT LAYOUT

(VIEW LOOKING AFT, FROM INSIDE CONSOLE)

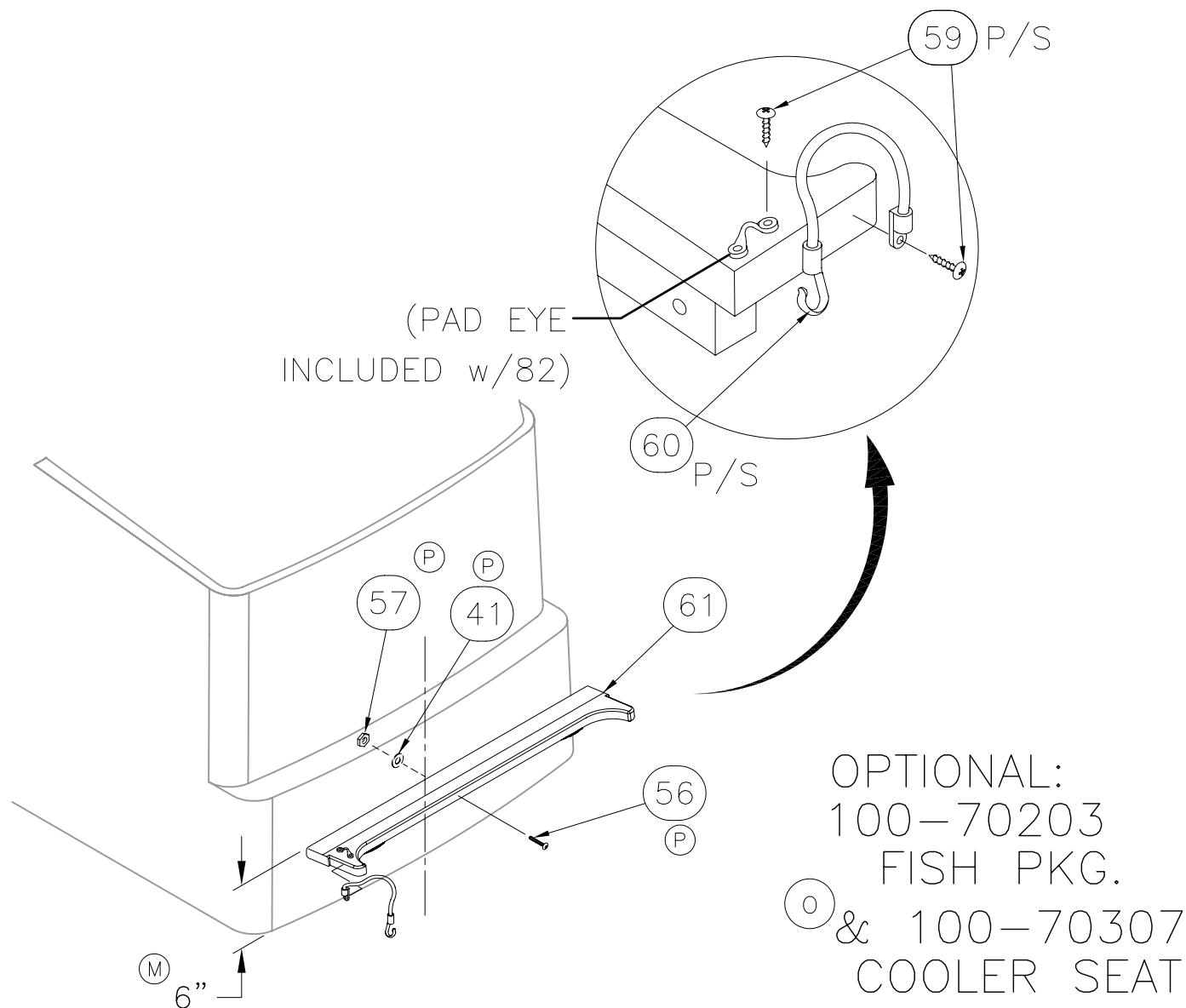
THIS DOCUMENT IS THE PROPERTY OF BOSTON WHALER, INC. MFG. DEPT., EDGEWATER, FLORIDA. ALL RIGHTS ARE RESERVED. THIS DOCUMENT AND INFORMATION CONTAINED MUST NOT BE COPIED OR DISCLOSED TO OTHERS WITHOUT WRITTEN PERMISSION OF BOSTON WHALER, INC.

DWG. NO:  
09201

REV.  
AD

CURRENT ECD  
060391

NOTES:



THIS DOCUMENT IS THE PROPERTY OF BOSTON WHALER, INC. MFG. DEPT., EDGEWATER, FLORIDA. ALL RIGHTS ARE RESERVED. THIS DOCUMENT AND INFORMATION CONTAINED MUST NOT BE COPIED OR DISCLOSED TO OTHERS WITHOUT WRITTEN PERMISSION OF BOSTON WHALER, INC.

DWG. NO:  
**09201**

REV.  
**AD**

CURRENT ECD  
**060391**

NOTES:

BILL OF MATERIAL

ITEM	QTY.	U/M	DESCRIPTION	B.W.I. NO.
01	1	EA	FIBERGLASS PART, CONSOLE 160DA-99	22-J871-00
ⓄⓆ	02	1	DOOR, HDPE BW160DA/17MTK-06 CNSL	1803646
03	2	EA	SCREW, TAPPING #6A x 5/8" POH SC	1008572
04	1	EA	RAIL, GRAB BW170MT-02 CNSL SS	1689427
05	1	EA	W/S, BW170MT-02 CNSL CLEAR	1689418
Ⓝ	06	1	BOX, PLAS BW-04 TACKLE 2-DRWR WHT	1761591
ⓉⓂ	07	1	EA COMPASS,FLSHMT 3 7/8" BLK WT HSE/GREEN LT	1791615
Ⓟ	08	1	EA SWITCH, BATTERY ON/OFF W/O LOCK W/O DISC	0162701
ⓂⓆⓄⓂ	09	1	EA PANEL, BW170MT-07 MERC ANALOG W/SW 60 ELPT	1848340
ⓕ	10	1	EA CUSH, BW170MT-02 B/R CNSL	1690319
Ⓨ	11	1	EA CUSH, BW17MTK-05 CNSL ROD HLDR	1781379
12	1	EA	PANEL, HDPE BW170MT-02 CLSOUT CNSL BASE	1690180
Ⓝ	13	1	EA CONTROL, CNSL MNT SGL N/HARNESS GEN II	1752911
14	1	EA	STEERING WHEEL, 15" DIA SS 25DEG	1020197
15	1	EA	ACC PART, MERC SW (SAFETY ASSY)	0882605
Ⓠ	16	1	EA HORN, SGL BLK NO CONN SERIES 84400-1	1780938
Ⓠ	17	1	EA HORN, GRILL SGL SS OVERLAY SERIES 84400-1	1781252
18	1	EA	ROD HOLDER, BW170MT-02 4-ROD ASSY	1690318
ⓕⓅⓂ	19	6	EA WASHER, FLAT #1/4" SC	1260769
Ⓟ	20	1	EA LABEL, BW DC MAIN BREAKER	1075282
21	1	EA	STEERING, HELM NFB SGL	0626143
22	1	EA	STEERING BEZEL 90 DEG SGL	626150
23	1	EA	EMBLEM, BW STEERING WHEEL CAP	1021054
Ⓟ	24	1	EA LABEL, BILGE (LEXAN)	756866
25	1	EA	PANEL, HDPE BW140/160DA-99 CLSOUT CNSL LRG	1193093
Ⓜ	26	1	EA DRAIN, 1" IMPACT W/O BARB BLK	1041953
27	2	EA	DRINKHOLDER, PLAS W/DRAIN DEEP XLG SZ BLK	1727419
28	0	FT	HOSE, PVC CLEAR 3/8"	0124347
29	1	EA	BOX, ABS FIRE EXT SHORT WHT	1037555
30	1	EA	BOX, ABS HARNESS	1037530
31	1	EA	BRKR/SWITCH, PUSH BUTTON 30A ETA	0365775
32	1	EA	BRKR, MANUAL RESET 5A	670497
Ⓠ	33	3	EA BOOT, RESET BRKR CLEAR	1066547
34	13	FT	TRIM, EDGE WHITE FLEX 'L'-TRIM	1020924
35	7	EA	NUT, WELL	1033422
36	7	EA	SCREW, MACHINE #10-32 x 1-1/4" PFH SC	1010107
37	7	EA	WASHER, FINISH #10 SS	0896258
Ⓟ	38	4	EA SCREW, MACHINE #10-24 X 1.75" PTH SC	1341973
39	4	EA	SNAP STUD, W/#8 X 3/8" PH BR/NI/SS	0203786
ⓕⓅⓂ	40	3	EA SCREW, CAP #5/16-18 X 1.25" HEX HD SC	1742748

BILL OF MATERIAL

ITEM	QTY.	U/M	DESCRIPTION	B.W.I. NO.
Ⓟ	41	26	EA WASHER, FLAT #10 SC	1260751
Ⓟ	42	26	EA NUT, HEX NYLON LOCK #10-24 SC	1007772
43	6	EA	SCREW, TAPPING #6 x 3/4" POH SC	1008564
44	14	EA	SCREW, TAPPING #8 x 5/8" PTH SC	1010925
ⓕ	45	6	EA NUT,NYLON LOCK 1/4-20 SC	1007764
Ⓝ	46	12	EA SCREW, MACHINE #10-24 x 1.25" POH SC	1008424
Ⓟ	47	1	EA COVER, ABS BW MINIBUSS BLK	1185016
48	1	EA	BUSS BAR, MINIBUSS BAR DC	1324334
Ⓟ	49	6	EA SCREW, TAPPING #8 x 1/2" PTH SC	1008812
Ⓠ	50	6	EA SCREW, TAPPING #8 x 3/4" PFH SC	1008408
51	1	EA	LIGHT, NAV A/R STERN 52" N/BEND	574400
52	1	EA	LIGHT, NAV STERN BASE RND CHR.	331751
53	1	EA.	CAP, DRAINBOOT STERN LIGHT MAST BLK	1042761
Ⓟ	54	3	EA WASHER, LOCK/SPLIT 5/16" SC	1260611
Ⓠ	55	4	EA. SCREW, TAPPING # 10 X 1" PTH SC	1008739
ⓅⓃ	56	4	EA SCREW, MACHINE #10-24 X 1.75" PTH SC	1341973
Ⓟ	57	4	EA NUT, HEX NYLON LOCK #10-24 SC	1007772
Ⓟ	58	3	EA. WASHER, FLAT #8 SC	1326297
59	4	EA.	SCREW, TAPPING #8A X 5/8" PTH SC	1010925
60	2	EA.	STRAP, COOLER TAMER 7" CNSL MNT	1741035
Ⓝ	61	1	EA. HOLDER, HDPE BW17MTK-04 COOLER	1756620
Ⓝ	62	6	EA. SCREW, MACHINE #10-24 X 3/4" PTH SC	1008705
ⓂⓆⓄⓂ	63	1	EA. PANEL, BLANK:BW170MT-07 W/SW	1848341
Ⓠ	64	2	EA. SPEAKER, COAXIAL 6.5" W/WHT CVR	1690555
ⓍⓆ	65	1	EA. PANEL, HDPE BW160DA/17MTK-06 CLOSEOUT STEREO	1803648
Ⓠ	66	2	EA. COVER, ABS BW-97 SPKR 7 1/8" RAD	1047836
Ⓠ	67	8	EA. SCREW, MACHINE #6-32 X 1" PFH SC	1010172
Ⓠ	68	8	EA. WASHER, FLAT #6 SC	1326222
Ⓠ	69	8	EA. NUT, LOCK 6-32 SC	1009810
Ⓠ	70	1	EA. BRKR, MANUAL RESET 15A	1750593
ⓃⓆ	71	4	EA. SCREW, MACHINE #10-24 X 4" POH SC	1812435
ⓍⓆ	72	1	EA. STEREO, AM/FM CD W/CHNGR/SIR SAT PLAYER CMD4	1803464
ⓍⓆ	73	1	EA. STEREO, REMOTE CNTRL W/DIG DSPLY FOR CMD4 BLK	1803894
Ⓠ	74	1	EA. LABEL, BW STEREO	1075266
Ⓜ	75	1	EA. SWITCH, IGN ASSY 4-POSITION W/HOUSING	1801954
ⓂⓅⓂ	76	1	EA. VIDEO EQUIPMENT, AUXILIARY INPUT MA-AUX2	1849383
ⓅⓂ	77	2	EA. ADAPTER, STEREO FEMALE/FEMALE	956078
ⓅⓂ	78	1	EA. CABLE, RCA AUDIO 6' W/EFX-2 CONN W/NOISE SUPP	1750880
ⓅⓂ	79	1	EA. HEAT SHRINK, TUBING RED 3/4"X 6"	1042274
ⓅⓂ	80	1	EA. HEAT SHRINK, TUBING BLK 3/4"X 6"	999839
ⓅⓂ	81	1	EA. PANEL, BW170MT-07 MERC ANALOG W/SW	1837738



INTERPRET DIMENSIONS AND TOLERANCES PER ANSI Y 14.5 UNLESS OTHERWISE SPECIFIED DIMENSIONS ARE IN INCHES.  
 TOLERANCES: ANGLES = ± .5° .XXX = ± .010  
 .X = ± .1 X = ± 1/16  
 .XX = ± .03

DO NOT SCALE DRAWING

DRAWN: **H READ**

DATE: **01/02/02**

SCALE: **NONE**

BOAT MODEL

MOLD NO.

**17MTK**

DWG. TITLE:  
**CONSOLE ASSEMBLY**

INIT. REL. ECN NO:  
**010976**

DWG. NO:  
**09201**

SHT. NO.  
**4 OF 4**

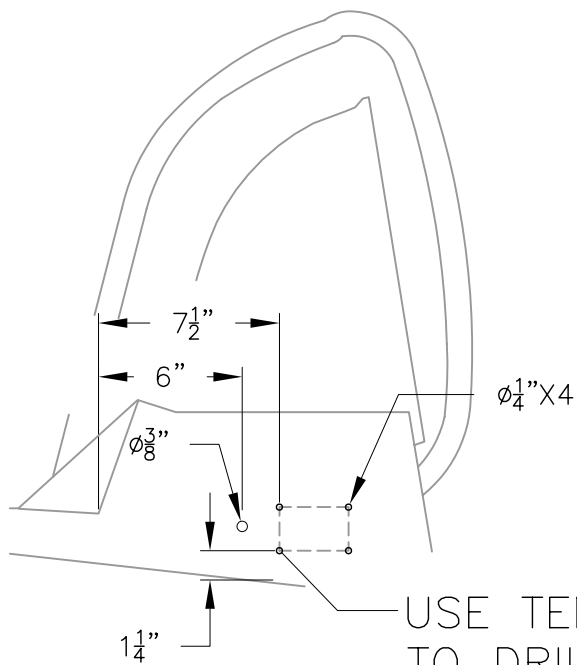
THIS DOCUMENT IS THE PROPERTY OF BOSTON WHALER, INC. MFG. DEPT., EDGEWATER, FLORIDA. ALL RIGHTS ARE RESERVED. THIS DOCUMENT AND INFORMATION CONTAINED MUST NOT BE COPIED OR DISCLOSED TO OTHERS WITHOUT WRITTEN PERMISSION OF BOSTON WHALER, INC.

DWG. NO:  
**08401**

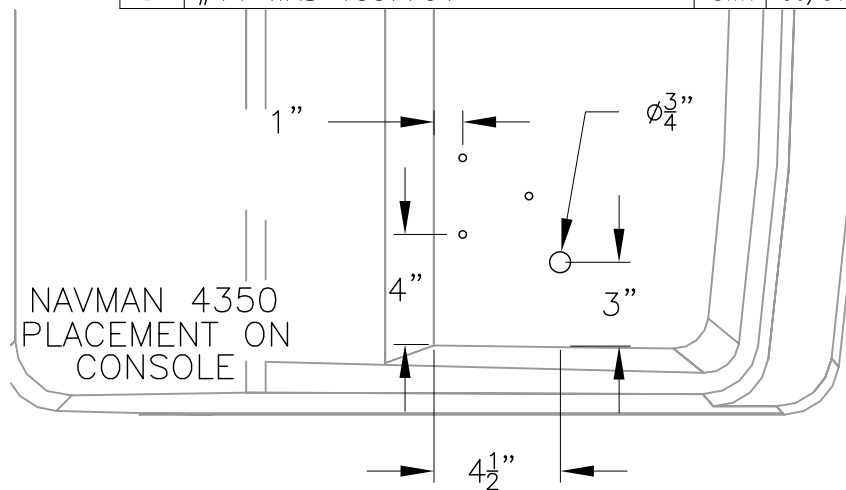
REV.  
**D**

CURRENT ECD  
**0604144**

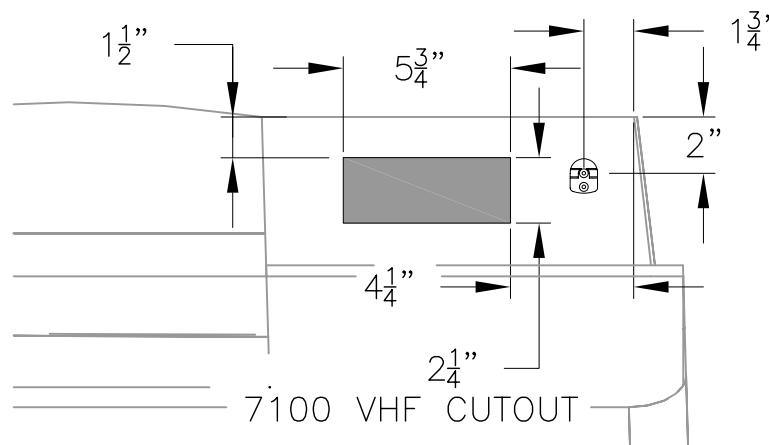
REVISIONS					
REV.	DESCR.	BY	DATE	APPVD.	ECN NO.
A	MODIFY DRAWING BORDER TO AN ATTRIBUTED BORDER	TS	01/23/06	AVM	060132
B	#3 WAS 0115311,7 WAS 1778036, ADD #25 DELETED 8 & 23	HJR	03/27/06		060222
C	MYE '07: ITEM #'S 3,4,7,9,12,13,14,15,18,24 MOVE TO OPT 100-75629, ADDED OPT 100-75629	AT	04/12/06		060426
D	#14 WAS 1007764	SWH	06/01/06	AVM	0604144



ANTENNA LOCATION  
STBD SIDE CONSOLE



NAVMAN 4350  
PLACEMENT ON  
CONSOLE



7100 VHF CUTOUT

INTERPRET DIMENSIONS AND TOLERANCES PER ANSI Y 14.5  
UNLESS OTHERWISE SPECIFIED DIMENSIONS ARE IN INCHES.  
TOLERANCES: ANGLES = ± .5° .XXX = ± .010  
.X = ± .1 .XX = ± .03 X/X = ± 1/16  
DO NOT SCALE DRAWING



CHECKED: D. DEVIEW	DATE: 2/15/05	DRAWN: H. READ	DATE: 02/09/05	SCALE: NONE	BOAT MODEL: 17MTK	MOLD NO.
APPD: K. RANIERI	DATE: 2/15/05	DWG. TITLE: ELECTRONICS PACKAGE			INIT. REL. ECN NO: 050205	DWG. NO: 08401
DESIGN: L. SCHOLZ	DATE: 2/16/05					SHT. NO. 1 OF 3
INT. ENG: M. GATICA	DATE: 2/17/05					

THIS DOCUMENT IS THE PROPERTY OF BOSTON WHALER, INC. MFG. DEPT., EDGEWATER, FLORIDA. ALL RIGHTS ARE RESERVED. THIS DOCUMENT AND INFORMATION CONTAINED MUST NOT BE COPIED OR DISCLOSED TO OTHERS WITHOUT WRITTEN PERMISSION OF BOSTON WHALER, INC.

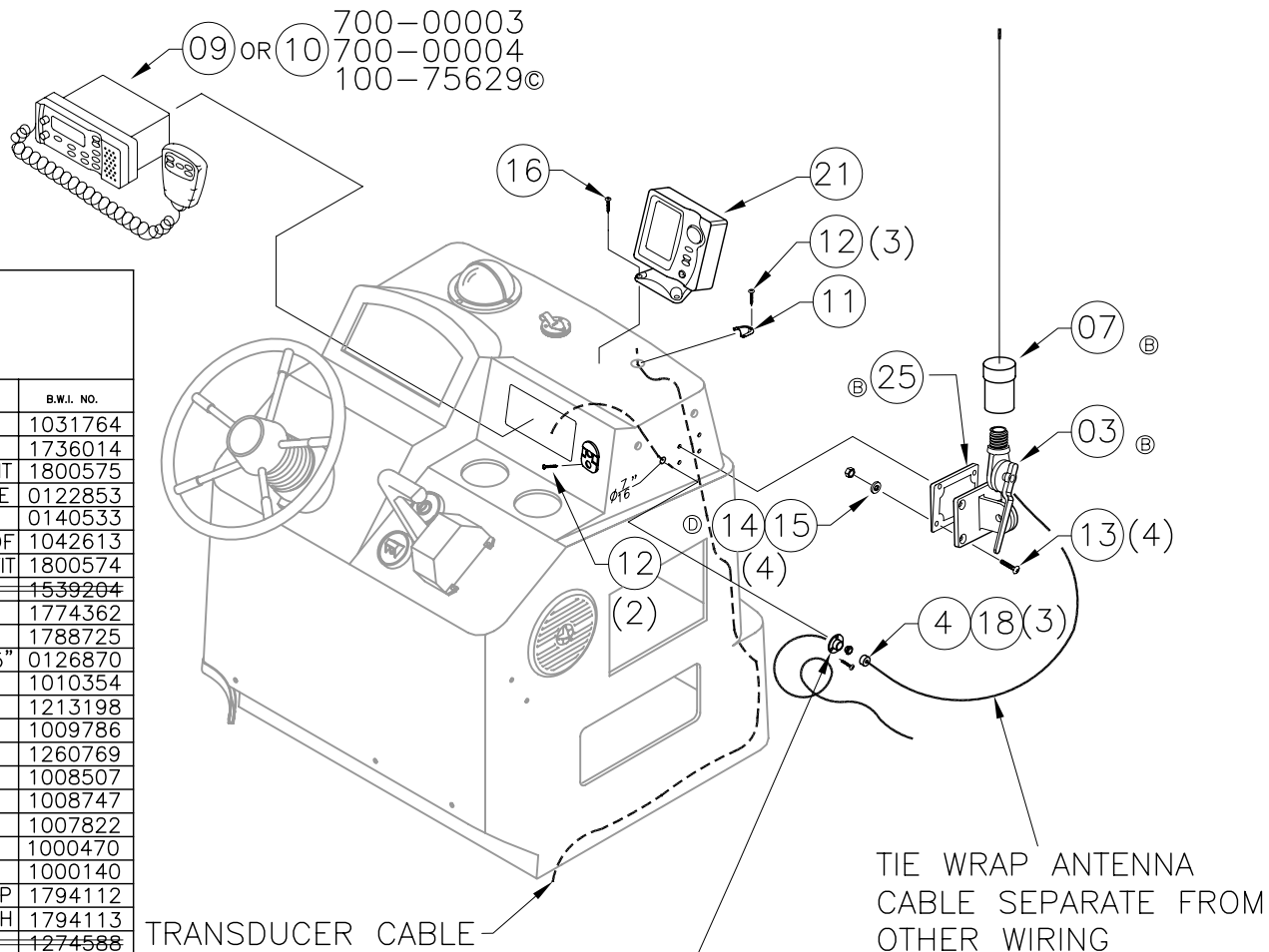
DWG. NO:  
**08401**

REV.  
**D**

CURRENT ECD  
**0604144**

NOTES:

APPLY SEALANT TO ALL FASTENERS & HOLES



**PARTS LIST**

100 70452  
100 75629  
700-00003  
700-00004

ITEM	QTY.	QTY.	QTY.	U/M	DESCRIPTION	B.W.I. NO.
1	6	4	-	EA.	TIE, CLIP BLK	1031764
2	6	4	-	EA.	TIE, CABLE 11.25" BLK 500/BUNDLE	1736014
3	-	1	-	EA.	MOUNT, RATCHET VHF 1850 NYLON QUICK-FIT	1800575
4	-	1	-	EA.	FITTING, WATER TIGHT OUTLET FOR 5/16" CABLE	0122853
5	1	-	-	EA.	FUSE, FERRULE TYPE AGC 1A	0140533
6	1	-	-	EA.	FUSE HOLDER, FERRULE TYPE WATERPROOF	1042613
7	-	1	-	EA.	ANTENNA, VHF 1770 N/CBL MNT 4.2'QUIK FIT	1800574
8	1	-	-	EA.	BRACKET, 1/8" X 3.5" X 5" ANTENNA MOUNT	1539204
9	-	1	-1	EA.	RADIO, VHF NAVMAN 7100 DSC	1774362
10	-	-	1	EA.	RADIO, VHF NAVMAN 7100 CAN	1788725
11	1	-	-	EA.	VENT, CLAMHELL ROPE LCKR 1 5/8" X 1.5"	0126870
12	6	2	-	EA.	SCREW, TAPPING #6A X 1" PFH SC	1010354
13	-	4	-	EA.	SCREW, MACHINE #1/4-20 X 1" POH SC	1213198
14	-	4	-	EA.	NUT, LOCK #1/4-20 SC STD PATT	1009786
15	-	4	-	EA.	WASHER, FLAT #1/4" SC	1260769
16	3	-	-	EA.	SCREW, TAPPING #10A X 1" POH SC	1008507
17	4	-	-	EA.	SCREW, TAPPING #10A X 1.5" PTH SC	1008747
18	-	3	-	EA.	SCREW, TAPPING #4A X 5/8" POH SC	1007822
19	2	-	-	FT.	WIRE, 14GA AWG RED INSUL TIN/CPR	1000470
20	2	-	-	FT.	WIRE, 14GA AWG BLK INSUL TIN/CPR	1000140
21	1	-	-	EA.	DEPTH FINDER, FISH FIND NAVMAN 4350 DISP	1794112
22	1	-	-	EA.	TRANSDUCER, TRNSM MNT NAVMAN 4350 FISH	1794113
23	1	-	-	EA.	CONN, SOLDERLESS W/CTR PIN	1274588
24	6	4	-	EA.	SCREW, TAPPING #8A X 5/8" PTH SC	1010925
25	-	1	-	EA.	SHIM, PLAS NAVMAN ATTNNA PLAS BASE 5DEG WHT	1831249
26	-	1	-	EA.	FUSE, FERRULE TYPE AGC 7.5A	0813915
27	2	2	-	EA.	CONN, RING 16/14GA X 10R W/INSUL H/SHRINK	0999854

NOTE: MOUNT FITTING FIRST THEN DRILL OUT CENTER W/ 3/8" BIT



INTERPRET DIMENSIONS AND TOLERANCES PER ANSI Y 14.5 UNLESS OTHERWISE SPECIFIED DIMENSIONS ARE IN INCHES.  
TOLERANCES: ANGLES = ± .5° .XXX = ± .010  
.X = ± .1 X = ± 1/16  
.XX = ± .03 X = ± 1/16  
DO NOT SCALE DRAWING

DRAWN: HAL READ DATE: 02/09/05 SCALE: NONE  
DWG. TITLE: ELECTRONICS PACKAGE

BOAT MODEL: 17MTK  
MOLD NO.:  
INIT. REL. ECN NO.: 050205  
DWG. NO.: 08401  
SHT. NO.: 2 OF 3

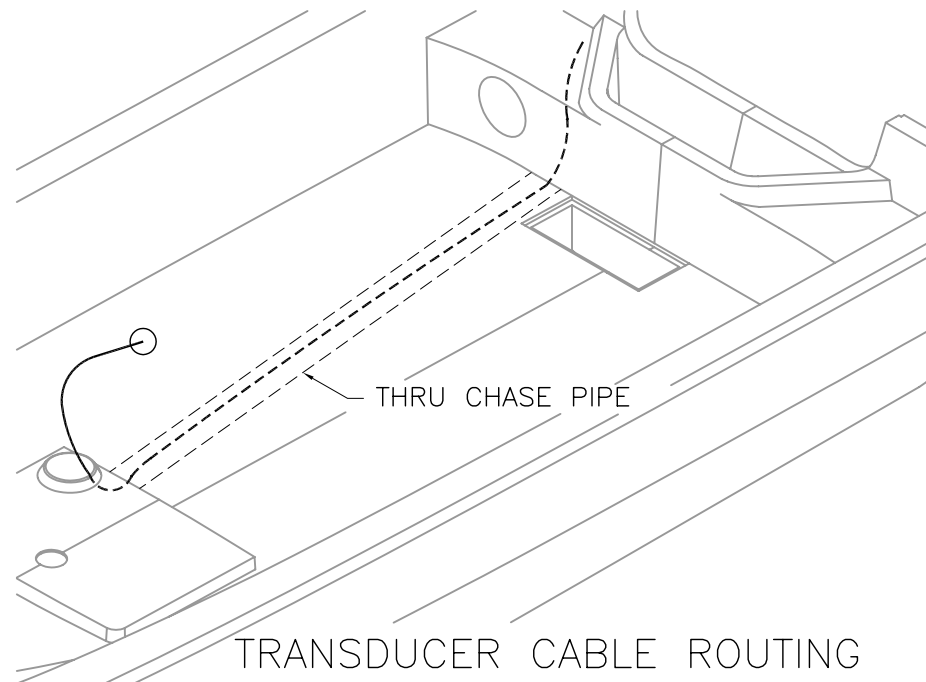
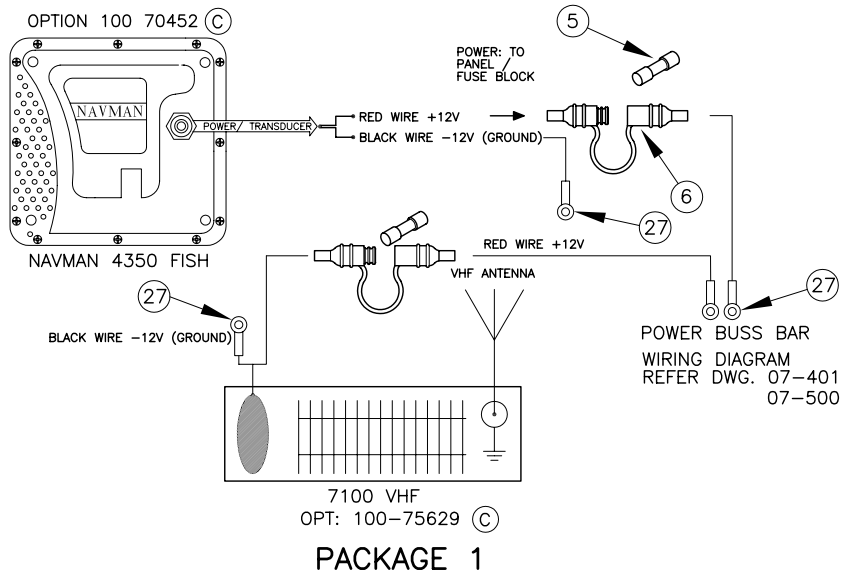
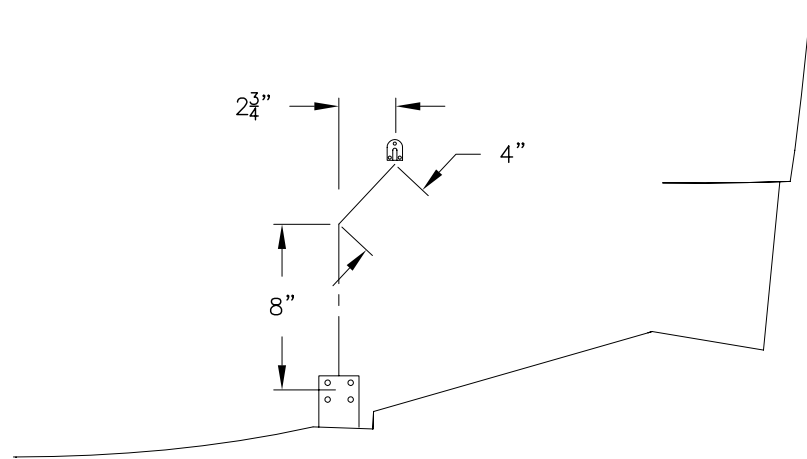
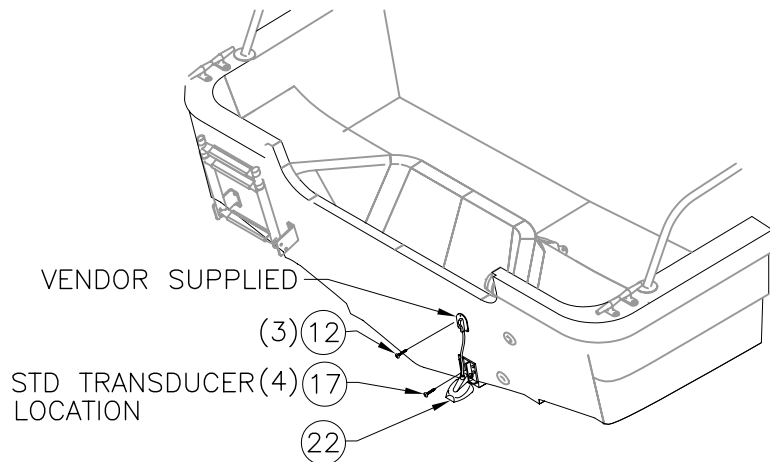
THIS DOCUMENT IS THE PROPERTY OF BOSTON WHALER, INC. MFG. DEPT., EDGEWATER, FLORIDA. ALL RIGHTS ARE RESERVED. THIS DOCUMENT AND INFORMATION CONTAINED MUST NOT BE COPIED OR DISCLOSED TO OTHERS WITHOUT WRITTEN PERMISSION OF BOSTON WHALER, INC.

DWG. NO:  
08401

REV.  
D

CURRENT ECD  
0604144

NOTES:  
APPLY SEALANT TO ALL FASTENERS & HOLES



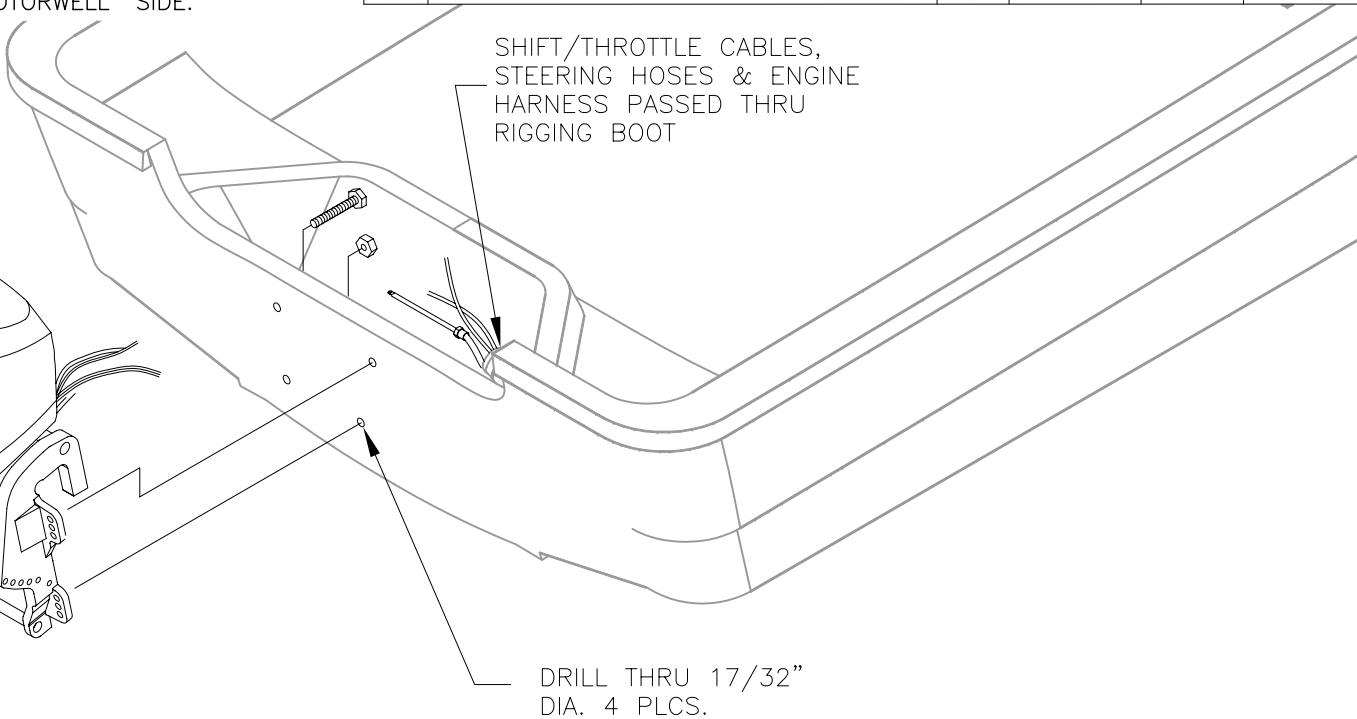
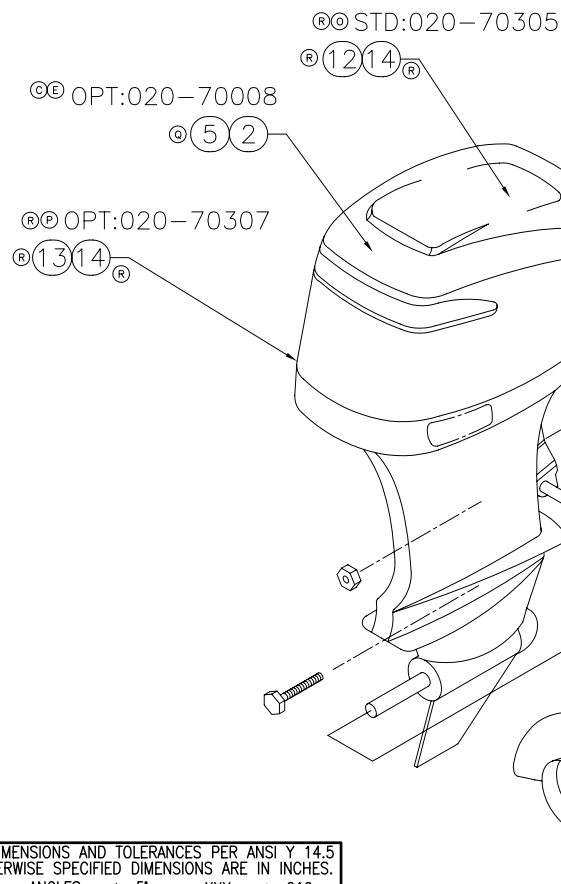


THIS DOCUMENT IS THE PROPERTY OF BOSTON WHALER, INC. MFG. DEPT., EDGEWATER, FLORIDA. ALL RIGHTS ARE RESERVED. THIS DOCUMENT AND INFORMATION CONTAINED MUST NOT BE COPIED OR DISCLOSED TO OTHERS WITHOUT WRITTEN PERMISSION OF BOSTON WHALER, INC.

DWG. NO: 10201  
 REV. R  
 CURRENT ECD 060353

1. USE MERCURY INSTRUCTIONS & RIGGING TEMPLATE FOR HOLE LAYOUT AND INSTALLATION.
3. HARDWARE INCLUDED w/ENGINE.
4. MARK CENTERLINE OF TRANSOM FOR ALIGNING RIGGING TEMPLATE.
5. HOLES TO BE DRILLED PERPENDICULAR TO TRANSOM.
6. ALL TRANSOM FASTENERS TO HAVE SEALANT APPLIED TO BOLT SHANKS.
7. ITEM #7 TO BE USED FOR PACKAGING PROPS.
8. LOWER FASTENERS, P/S HAVE BOLT HEAD ON "ENGINE SIDE". UPPER FASTENERS, P/S HAVE BOLT HEAD ON "MOTORWELL" SIDE.

REVISIONS					
REV.	DESCR.	BY	DATE	APPVD.	ECN NO.
L	MYE '05: ITEM #3 WAS 1756352	JM	05/03/04	ZAC	04-01-37
M	MODIFY ENGINE MOUNTING DETAIL PAGE 2	HJR	07/30/04	ZAC	04-07-31
N	MYE '06: DELETE OPT: 020-70263, #8 & #9	MRZ	04/07/05	MG	05-03-43
O	MYE '06: DELETE OPT: 020-70020, #1,3, &4; ADDED #10	MRZ	04/26/05	MG	05-04-03
P	ADD OPT: 020-70302	GD	11/15/05	ME	05-11-47
Q	MYE '07: ITEM #2 WAS 1753186	AT	04/11/06	MG	06-04-13
R	MYE '07: DELETE ITEMS 6, 10 & 11, ITEMS 12,13,14 ADDED, WERE 020-70302 & 020-70281	AT	06/26/06	MG	06-03-53



NOTE: SHIP PROP  
 LOOSE PACKAGED  
 IN #7

REFERENCE DWG'S:  
 07-401, WIRING DIAGRAM  
 10-401, STEERING/THROTTLE SYSTEM  
 10-501, FUEL SYSTEM

INTERPRET DIMENSIONS AND TOLERANCES PER ANSI Y 14.5  
 UNLESS OTHERWISE SPECIFIED DIMENSIONS ARE IN INCHES.  
 TOLERANCES: ANGLES = ± .5° .XXX = ± .010  
 .X = ± .1 .XX = ± .03 X = ± 1/16  
 DO NOT SCALE DRAWING



CHECKED: K. RANIERI	DATE: 02/08/02	DRAWN: R.CRAVEN	DATE: 01/22/02	SCALE: NONE	BOAT MODEL 17MTK	MOLD NO.
APPD: K. RANIERI	DATE: 02/08/02	DWG. TITLE: Engine Installation			INIT. REL. ECN NO: 010624	DWG. NO: 10201
DESIGN: L. SCHOLZ	DATE: 02/11/02				SHT. NO. 1 of 2	
INT. ENG: M. GATICA	DATE: 02/11/02					

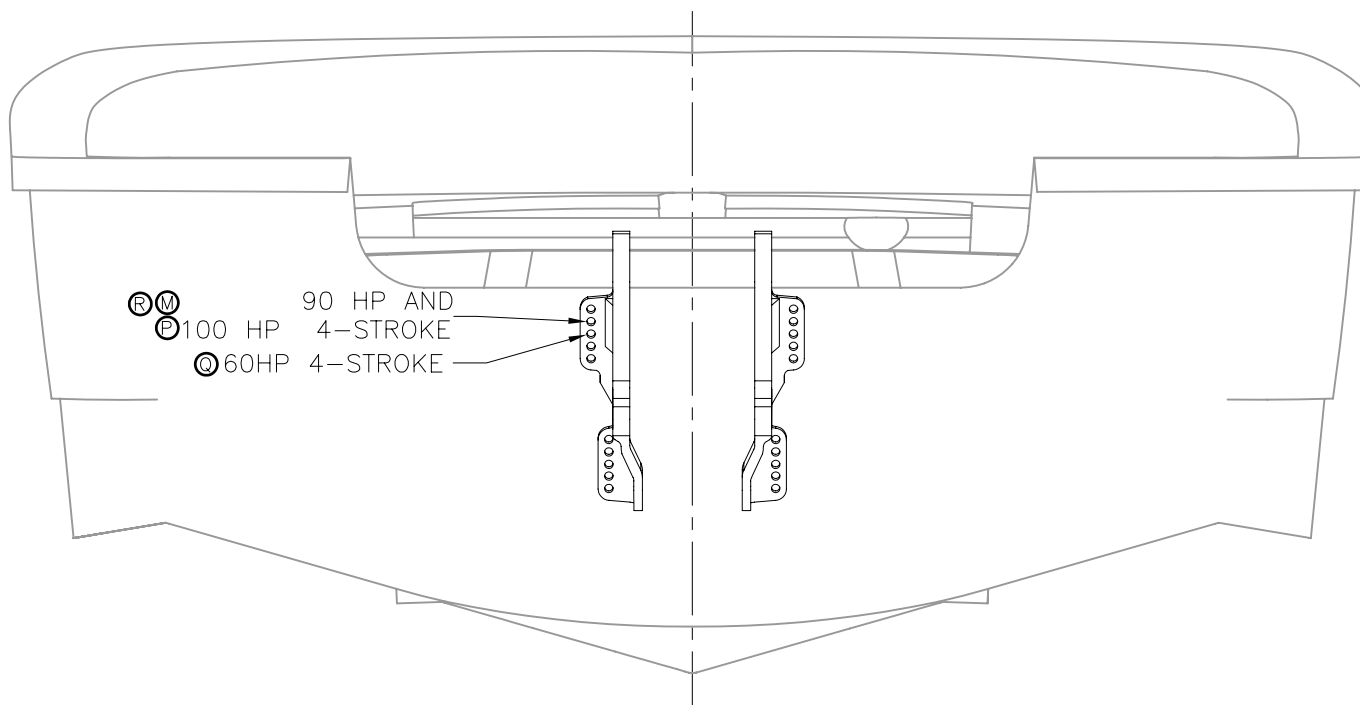
THIS DOCUMENT IS THE PROPERTY OF BOSTON WHALER, INC. MFG. DEPT., EDGEWATER, FLORIDA. ALL RIGHTS ARE RESERVED. THIS DOCUMENT AND INFORMATION CONTAINED MUST NOT BE COPIED OR DISCLOSED TO OTHERS WITHOUT WRITTEN PERMISSION OF BOSTON WHALER, INC.

DWG. NO:  
10201

REV.  
R

CURRENT ECD  
060353

Parts List					
ITEM	QTY	U/M	DESCRIPTION	B.W.I.	NO.
1	1	EA.	O/B, MERC 90ELPTO SALT '04	1756351	(B)(E)(G)(O)
2	1	EA.	O/B, MERC 60 ELPT BF 4-STK EFI 20"CHINA	1830984	(E)(Q)
3	1	EA.	O/B, MERC 90ELPT 4-STROKE SALT	1750633	(B)(D)(E)(H)(K)(L)(O)
4	1	EA.	PROP, 12.75" x 21" ALUM BLACK MAX	0388892	(D)
5	1	EA.	PROP, 14"X 13" ALUM BLK MAX RUBBER HUB	1752555	(C)
6	1	EA.	PROP, 13"X 18" VENGEANCE RH	1412014	(I)(R)
7	1	EA.	BAG, POLY 33" x 40" x 33 GAL HVY CLR	1143163	
8	1	EA.	O/B, MERC 90ELPT OPTIMAX 20" SW	1754411	(J)(N)
9	1	EA.	PROP, 13"X 19" ALUM BLACK MAX	0127381	(J)(N)
10	1	EA.	O/B, MERC 90 ELPT 4-STROKE EFI 20"SHAFT	1802339	(D)(R)
11	1	EA.	O/B, MERC 100 ELPT 4-S EU 2006	1817115	(P)(R)
12	1	EA.	O/B, MERC 90 ELPT 4-S L4NA	1817145	(R)
13	1	EA.	O/B, MERC 100 ELPT 4-S L4NA EU	1838160	(R)
14	1	EA.	PROP, 13.25"X 20" SS LASER 2	0783993	(R)



INTERPRET DIMENSIONS AND TOLERANCES PER ANSI Y 14.5 UNLESS OTHERWISE SPECIFIED DIMENSIONS ARE IN INCHES.  
TOLERANCES: ANGLES = ± .5° .XXX = ± .010  
.X = ± .1 X = ± 1/16  
.XX = ± .03

DO NOT SCALE DRAWING

DRAWN: R.CRAVEN

DATE: 01/22/02

SCALE: NONE

BOAT MODEL

MOLD NO.

17MTK

DWG. TITLE:

Engine Installation

INIT. REL. ECN NO:

010624

DWG. NO:

10201

SHT. NO.

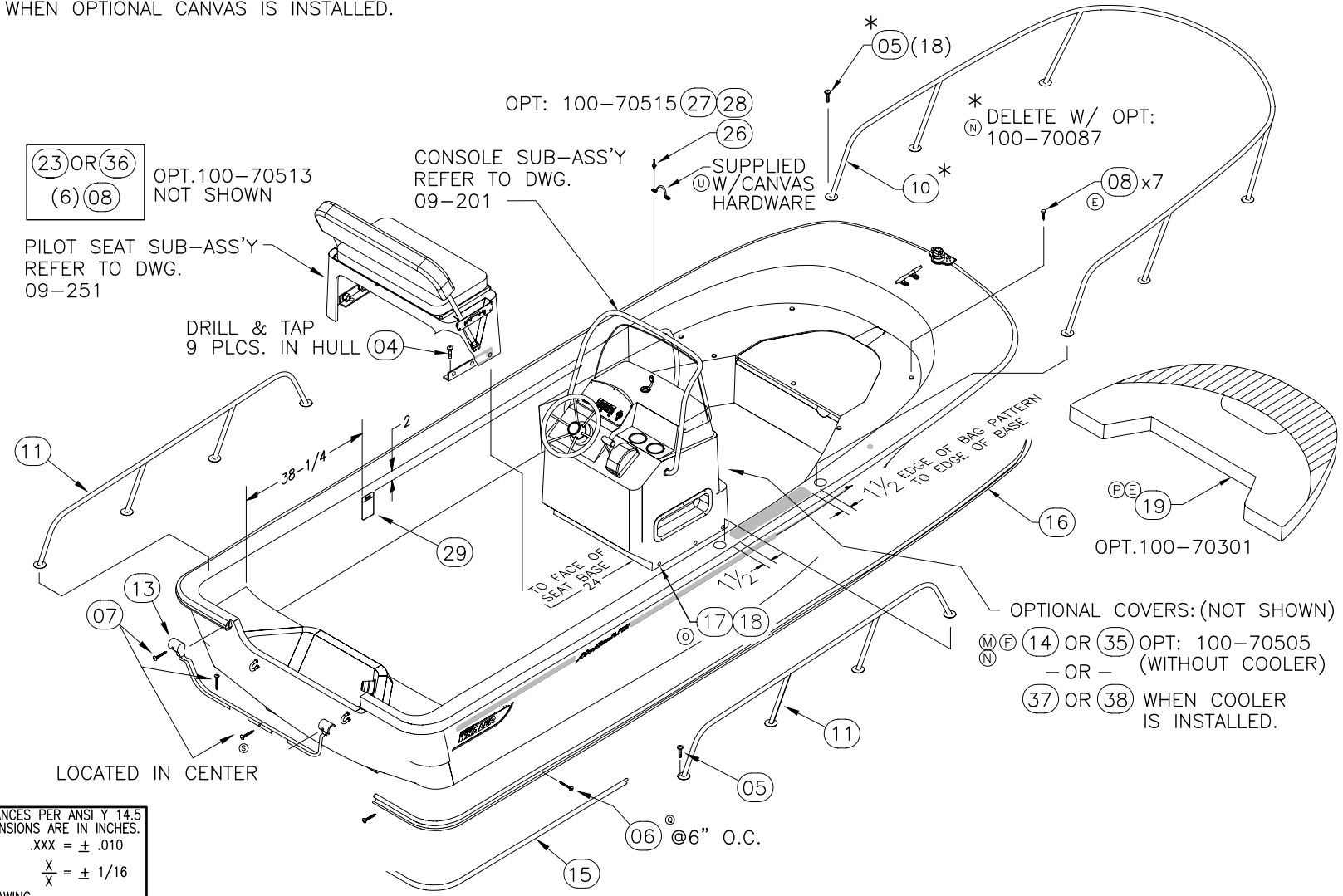
2 OF 2

THIS DOCUMENT IS THE PROPERTY OF BOSTON WHALER, INC. MFG. DEPT., EDGEWATER, FLORIDA. ALL RIGHTS ARE RESERVED. THIS DOCUMENT AND INFORMATION CONTAINED MUST NOT BE COPIED OR DISCLOSED TO OTHERS WITHOUT WRITTEN PERMISSION OF BOSTON WHALER, INC.

DWG. NO: 11201  
 REV. U  
 CURRENT ECD 051232

REVISIONS					
REV.	DESCR.	BY	DATE	APPVD.	ECN NO.
P	#19 P/N 1781378 WAS 1690127 & #20 P/N 1781380 WAS 1691319.	SL	07/19/05	ME	04-06-36
Q	CHANGED PN# & DESCRIPTION ITEM 6, SHEETS 1 & 3	SLJ	09/15/05	MG	05-09-06
R	ADD OPT. 100-75318 , PAGE 3, & ITEM#'S 39 THRU 45	GD	11/1/05	MG	05-06-28
S	ADDED CENTER TRANSOM TRIM SCREW, #7, SHEETS 1 & 4	SLJ	01/10/06	ME	051148
T	CHANGED PN# & DESCRIPTION ITEM 10, SHEET 4	SLJ	01/16/06	ME	051226
U	DELETED ITEM # 9, CALL OUT ITEM AS SUPPLIED W/CANVAS HARDWARE, SHEETS 1 & 4.	SL	01/17/06	ME	051232

- REFER TO DWG. 07-401, WIRING DIAGRAM" FOR CONSOLE TO HULL INTERCONNECTS.
- ALL DRILLED HOLES (FOR MOUNTING COMPONENTS & HARDWARE TO HULL) SHALL BE SEALED W/ WHITE SILICONE SEALANT WHEN THE FASTENER IS INSTALLED.
- THE CANVAS MANUFACTURERS' INSTRUCTIONS W/ CANVAS SHALL BE USED WHEN OPTIONAL CANVAS IS INSTALLED.



INTERPRET DIMENSIONS AND TOLERANCES PER ANSI Y 14.5 UNLESS OTHERWISE SPECIFIED DIMENSIONS ARE IN INCHES.  
 TOLERANCES: ANGLES = ± .5° .XXX = ± .010  
 .X = ± .1 .XX = ± .03 X = ± 1/16  
 DO NOT SCALE DRAWING



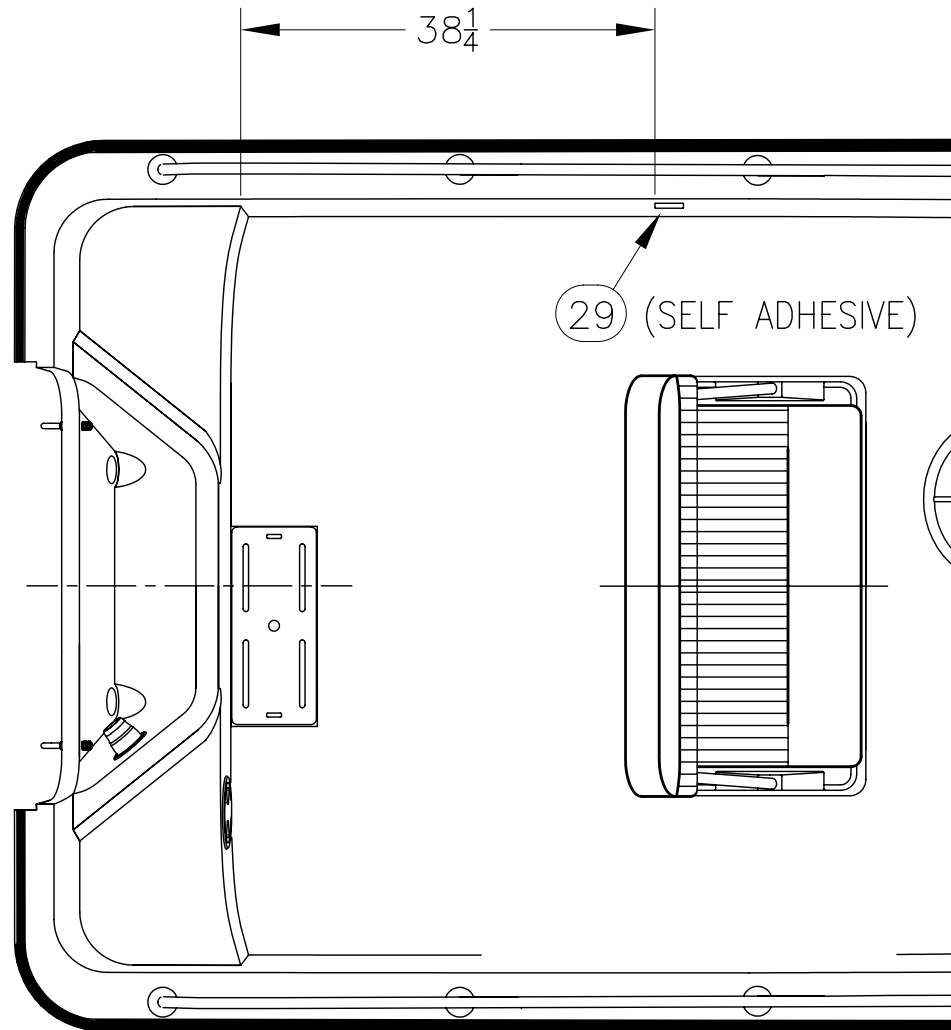
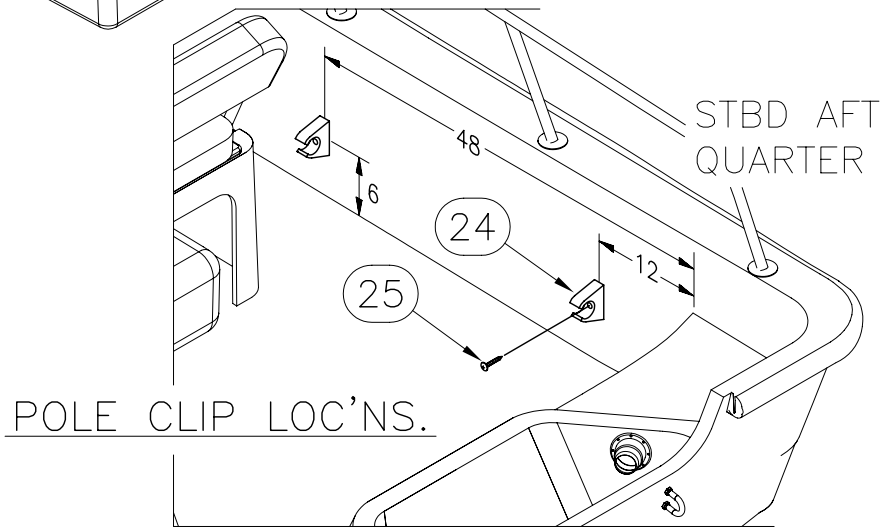
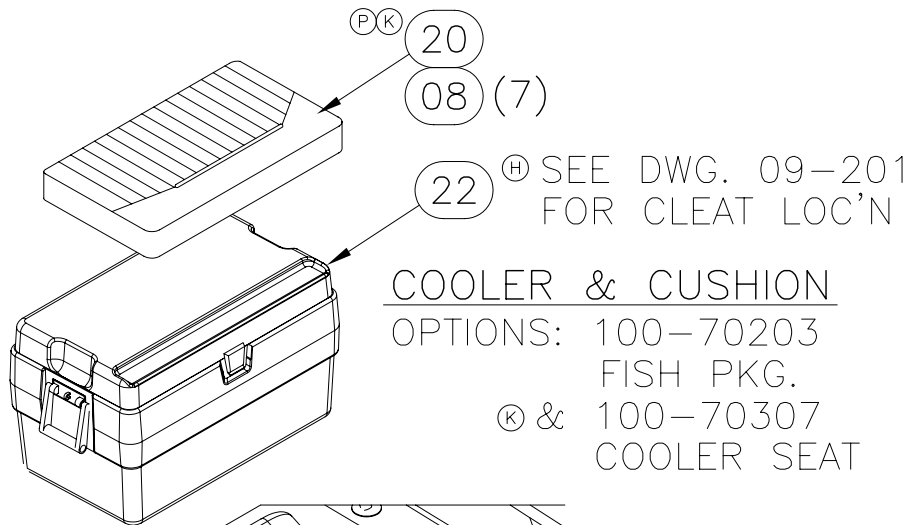
CHECKED: R. AVILA	DATE: 01/28/02	DRAWN: H READ	DATE: 01/22/02	SCALE: NONE	BOAT MODEL 17MTK	MOLD NO.
APPD: K. RANIERI	DATE: 01/28/02	DWG. TITLE: Final Assembly			INIT. REL. ECN NO: 010976	DWG. NO: 11201
DESIGN: L. SCHOLZ	DATE: 01/28/02				SHT. NO. 1 OF 4	
INT. ENG: M. GATICA	DATE: 2/11/02					

THIS DOCUMENT IS THE PROPERTY OF BOSTON WHALER, INC. MFG. DEPT., EDGEWATER, FLORIDA. ALL RIGHTS ARE RESERVED. THIS DOCUMENT AND INFORMATION CONTAINED MUST NOT BE COPIED OR DISCLOSED TO OTHERS WITHOUT WRITTEN PERMISSION OF BOSTON WHALER, INC.

DWG. NO:  
11201

REV.  
U

CURRENT ECD  
051232

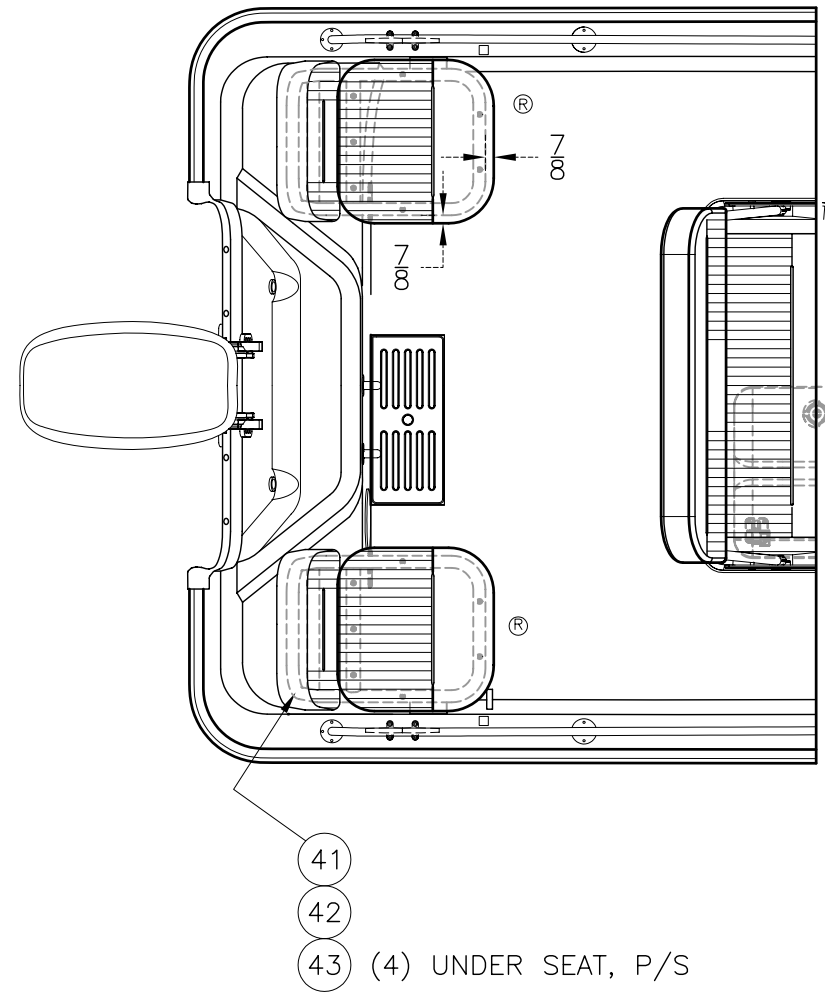
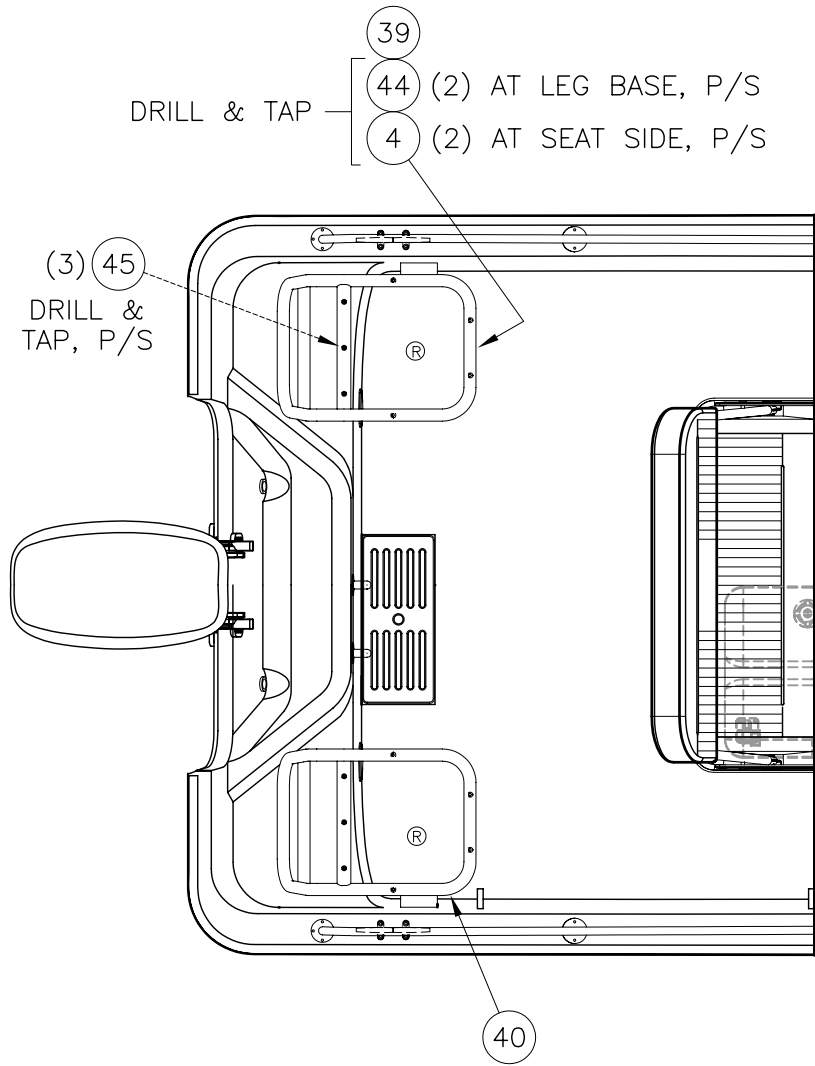


THIS DOCUMENT IS THE PROPERTY OF BOSTON WHALER, INC. MFG. DEPT., EDGEWATER, FLORIDA. ALL RIGHTS ARE RESERVED. THIS DOCUMENT AND INFORMATION CONTAINED MUST NOT BE COPIED OR DISCLOSED TO OTHERS WITHOUT WRITTEN PERMISSION OF BOSTON WHALER, INC.

DWG. NO:  
11201

REV.  
U

CURRENT ECD  
051232



OPT: 100-75318



INTERPRET DIMENSIONS AND TOLERANCES PER ANSI Y 14.5 UNLESS OTHERWISE SPECIFIED DIMENSIONS ARE IN INCHES.  
TOLERANCES: ANGLES = ± .5° .XXX = ± .010  
.X = ± .1 X = ± 1/16  
.XX = ± .03  
DO NOT SCALE DRAWING

DRAWN: H READ

DATE: 01/22/02

SCALE: NONE

BOAT MODEL

MOLD NO.

17MTK

DWG. TITLE:

Final Assembly

INIT. REL. ECN NO:

DWG. NO:

SHT. NO.

010976

11201


3 of 4

# PARTS LIST

ITEM	QTY.	U/M	DESCRIPTION	B.W.I. NO.
Ⓜ	1	EA.	CLEAT ASSY, HDPE BW-98 COOLER 72QT PORT	1068139
Ⓜ	1	EA.	CLEAT ASSY, HDPE BW-98 COOLER 72QT STBD	1068121
Ⓜ	3	EA.	SCREW, TAPPING #8A x 5/8 PTH SC	1010925
Ⓜ	4	EA.	SCREW, MACHINE #1/4-20 X 1.5" PPH SC	1008598
Ⓜ	5	EA.	SCREW, MACHINE #1/4-20 X 1" PPH SC	1008580
Ⓜ	6	EA.	SCREW, TAP #10A X 1.5" W/STP EPXY ORNG PFH	1814515
Ⓜ	7	EA.	SCREW, TAPPING #8A X 1" PTH SC	1008804
Ⓜ	8	EA.	SNAP STUD, W/#8 X 3/8" PH BR/NI/SS	203786
Ⓜ	9	EA.	EYE, STRAP EYE TIE-DOWN 5/16" CHR/ZINC	861120-
Ⓜ	10	EA.	RAIL, BOW BW170MT-06 SS	1817768
Ⓜ	11	EA.	RAIL, SIDE BW170MT-02 AFT	1689429
Ⓜ	12	EA.	SCREW, TAPPING #10A X 1.5" PFH SC	1010248
Ⓜ	13	EA.	CAP, RUBRAIL BW170MT-02 TRNSM TRIM	1690126
Ⓜ	14	EA.	CANVAS, BW17MTK-05 CNSL CVR BLK	1771130
Ⓜ	15	EA.	INSERT, RUB RAIL CHAR FLEX 40'	1020817
Ⓜ	16	EA.	RUBRAIL, PLASTIC CHAR 40'	1020858
Ⓜ	17	EA.	SCREW, TAPPING #14A X 1.5" PFH SC	1008382
Ⓜ	18	EA.	WASHER, FINISH #12 SS	958868
Ⓜ	19	EA.	CUSH, BW17MTK-05 BOW	1781378
Ⓜ	20	EA.	CUSH, BW17MTK-05 COOLER SEAT 72QT	1781380
Ⓜ	21	EA.	HOOK, PLAS COOLER 1/8" WHT	1043181
Ⓜ	22	EA.	COOLER, 72QT WHT	1016427
Ⓜ	23	EA.	CANVAS, BW170MT-05 REV'BL SEAT CVR BLK	1771128
Ⓜ	24	PR.	CLIP, POLE STRG BLK - MAST LIGHT	0590646
Ⓜ	25	EA.	SCREW, TAPPING #10A X 1" PTH SC	1008739
Ⓜ	26	EA.	RIVET, POP/BLIND #3/16 X 3/8" SS	192120
Ⓜ	27	EA.	CANVAS, BW17MTK-04 BIM TOP W/BOOT BLK	1753197
Ⓜ	28	EA.	CANVAS, BW17MTK-04 BIM TOP W/BOOT BLUE	1756018
Ⓜ	29	EA.	LABEL, BW CLEARANCE 17MTK-04 STERN SEAT LEXAN	1769263
Ⓜ	30	EA.	PLATE, BW 97 STERN SEAT SUPPORT LEG	1023456
Ⓜ	31	EA.	SCREW, MACHINE #1/4-20 X 1.25" PFH SC	1213289
Ⓜ	32	EA.	CUSH, BW17MTK-04 STERN SEAT W/HDWR WHT/GRY	1766465
Ⓜ	33	EA.	KNOB, LOCKING 3/8-16 X 3/4" SS	1510957
Ⓜ	34	EA.	CANVAS, BW17MTK-04 CNSL CVR W/COOLRCUTOUT GRY	1760645
Ⓜ	35	EA.	CANVAS, BW17MTK-05 CNSL CVR BLUE	1771131
Ⓜ	36	EA.	CANVAS, BW170MT-05 REV'BL SEAT CVR BLUE	1771129
Ⓜ	37	EA.	CANVAS, BW17MTK-05 CNSL CVR W/COOLRCUTOUT BLK	1776599
Ⓜ	38	EA.	CANVAS, BW17MTK-05 CNSL CVR W/COOLRCUTOUT BLU	1776601
Ⓜ	39	EA.	FRAME, BW170DIS-04 ALUM AFT SEAT PRT	1773133
Ⓜ	40	EA.	FRAME, BW170DIS-04 ALUM AFT SEAT STB	1773134
Ⓜ	41	EA.	CUSH, BW170DIS-04 AFT SEAT	1773999
Ⓜ	42	EA.	CUSH, BW170DIS-04 B/R AFT SEAT	1774001
Ⓜ	43	EA.	SCREW, TAPPING #14A X 2" PFH SC	1010297
Ⓜ	44	EA.	SCREW, MACHINE #1/4-20 X 1.5" POH SC	1010438
Ⓜ	45	EA.	SCREW, MACHINE #1/4-20 X 2" PFH SC	1235308

THIS DOCUMENT IS THE PROPERTY OF BOSTON WHALER, INC. MFG. DEPT., EDGEWATER, FLORIDA. ALL RIGHTS ARE RESERVED. THIS DOCUMENT AND INFORMATION CONTAINED MUST NOT BE COPIED OR DISCLOSED TO OTHERS WITHOUT WRITTEN PERMISSION OF BOSTON WHALER, INC.

DWG. NO: 11201  
REV. U  
CURRENT ECD 051232

 <p style="font-size: 8px; margin: 0;">BOSTON WHALER PRODUCT DEV. &amp; MFG. ENGINEERING GROUP</p>	<p style="font-size: 8px; margin: 0;">DRAWN: H READ DATE: 01/22/02 SCALE: NONE DWG. TITLE: Final Assembly</p>	<p style="font-size: 8px; margin: 0;">BOAT MODEL: 17MTK MOLD NO.:</p>	<p style="font-size: 8px; margin: 0;">INIT. REL. EGN NO: 010976 DWG. NO: 11201 SHT. NO. 4 OF 4</p>
<p>INTERPRET DIMENSIONS AND TOLERANCES PER ANSI Y 14.5 UNLESS OTHERWISE SPECIFIED DIMENSIONS ARE IN INCHES.            TOLERANCES: ANGLES = ± .5°            .X = ± .1            .XX = ± .03            .XXX = ± .010            X = ± 1/16            X = ± 1/16            DO NOT SCALE DRAWING</p>			

THIS DOCUMENT IS THE PROPERTY OF BOSTON WHALER, INC. MFG. DEPT., EDGEWATER, FLORIDA. ALL RIGHTS ARE RESERVED. THIS DOCUMENT AND INFORMATION CONTAINED MUST NOT BE COPIED OR DISCLOSED TO OTHERS WITHOUT WRITTEN PERMISSION OF BOSTON WHALER, INC.

DWG. NO:  
10501

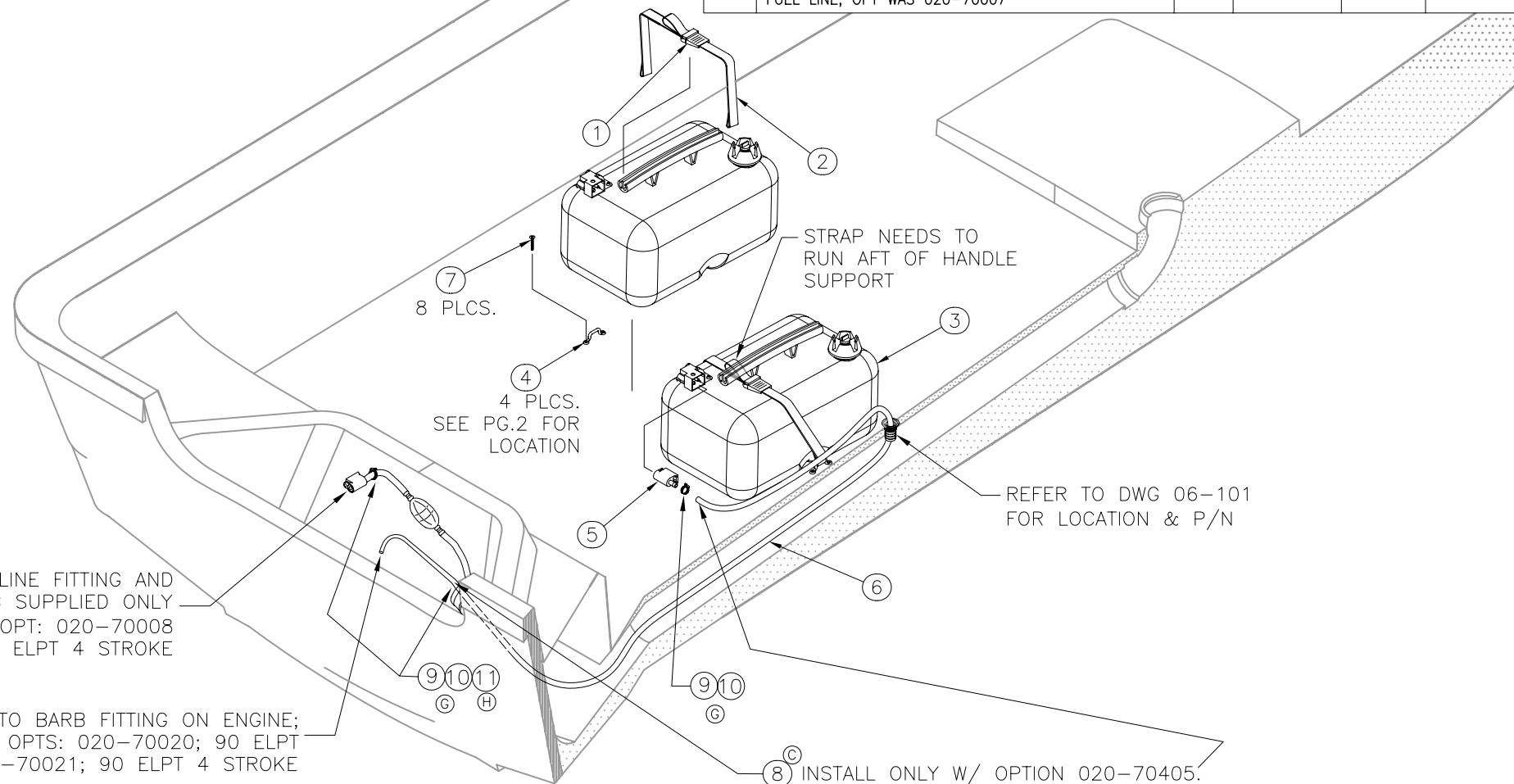
REV.  
H

CURRENT ECD  
060353

NOTES:

1. REFER TO DWG.#06-101 FOR ALL HOLE CUTOUTS.
2. HOSE & LINE ROUTINGS TO COMPLY w/NMMA, USCG, & ABYC STDS. AND RECOMMENDATIONS.
3. REFER TO DWG. 01-251 FOR HOSE CUT LENGTHS.
4. DO NOT INSTALL ITEMS 1-5 OR ITEM 7 (SHEET 2 OF 2) WHEN OPTION 020-70405 IS ORDERED.
5. WITH OPTION 020-70405: INSTALL #6, FUEL HOSE, WITH #8, PLUGS AT EACH END OF FUEL LINE.

REVISIONS					
REV.	DESCR.	BY	DATE	APPVD.	ECN NO.
C	SHEETS 1 & 2: ADDED #8, PLUGS. MODIFY NOTE 4, AND ADDED NOTE 5.	TS	08/06/02	ZAC	020802
D	CHANGED NUMBERING SYSTEM/ APPLY ATT BORDER	AVM	04/21/03	-	030308
E	MODIFY DRAWING BORDER TO AN ATTRIBUTED BORDER	TS	01/24/06	AVM	060132
F	CHANGED PN# & DESCRIPTION ITEM 6, SHEET 2	SLJ	02/16/06	ME	051227
G	ADDED ITEMS 9 & 10, SHEETS 1 & 2	SLJ	02/22/06	ME	051172
H	MYE '07: ADDED ITEM #11, MOVED PRIMER BULB ON FUEL LINE, OPT WAS 020-70007	AT	04/12/06		060353



FUEL LINE FITTING AND PRIMER BULB SUPPLIED ONLY  
w/OPT: 020-70008  
60 ELPT 4 STROKE

Ⓒ TO BARB FITTING ON ENGINE;  
OPTS: 020-70020; 90 ELPT  
020-70021; 90 ELPT 4 STROKE

INTERPRET DIMENSIONS AND TOLERANCES PER ANSI Y 14.5  
UNLESS OTHERWISE SPECIFIED DIMENSIONS ARE IN INCHES.  
TOLERANCES: ANGLES = ± .5° .XXX = ± .010  
.X = ± .1 .XX = ± .03 X = ± 1/16  
DO NOT SCALE DRAWING



CHECKED: R. AVILA	DATE: 01/15/02	DRAWN: R. CRAVEN	DATE: 01/15/02	SCALE: NONE	BOAT MODEL 17MTK	MOLD NO.
APPD: LMS	DATE: 01/17/02	DWG. TITLE: FUEL SYSTEM INSTALLATION			INIT. REL. ECN NO: 010976	DWG. NO: 10501
DESIGN: L. SCHOLZ	DATE: 01/17/02				SHT. NO. 1 OF 2	
INT. ENG: M. GATICA	DATE: 02/11/02					

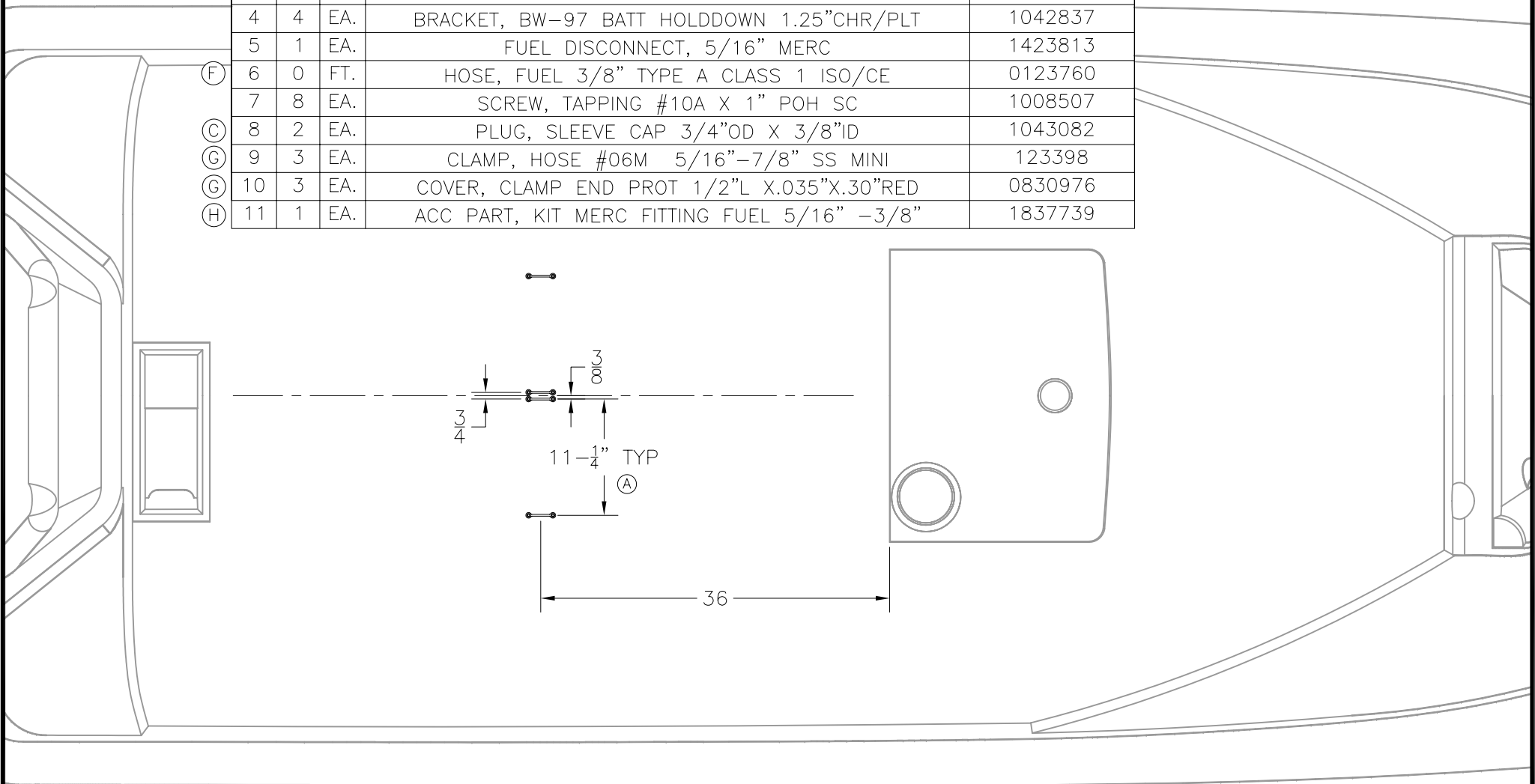
THIS DOCUMENT IS THE PROPERTY OF BOSTON WHALER, INC. MFG. DEPT., EDGEWATER, FLORIDA. ALL RIGHTS ARE RESERVED. THIS DOCUMENT AND INFORMATION CONTAINED MUST NOT BE COPIED OR DISCLOSED TO OTHERS WITHOUT WRITTEN PERMISSION OF BOSTON WHALER, INC.

DWG. NO:  
10501

REV.  
H

CURRENT ECD  
060353

Parts List				
ITEM	QTY	U/M	DESCRIPTION	B.W.I. NO.
1	2	EA.	UPH PARTS, BUCKLE 1" SIDE RELEASE M/F BLK	0871004
2	9	FT.	WEBBING, BW-97 STRAP NYLON 1"	1030105
3	2	EA.	TANK, FUEL 6.6GAL PLAS	1121706
4	4	EA.	BRACKET, BW-97 BATT HOLDDOWN 1.25"CHR/PLT	1042837
5	1	EA.	FUEL DISCONNECT, 5/16" MERC	1423813
(F)	6	0	FT. HOSE, FUEL 3/8" TYPE A CLASS 1 ISO/CE	0123760
(C)	7	8	EA. SCREW, TAPPING #10A X 1" POH SC	1008507
(G)	8	2	EA. PLUG, SLEEVE CAP 3/4"OD X 3/8"ID	1043082
(G)	9	3	EA. CLAMP, HOSE #06M 5/16"-7/8" SS MINI	123398
(G)	10	3	EA. COVER, CLAMP END PROT 1/2"L X.035"X.30"RED	0830976
(H)	11	1	EA. ACC PART, KIT MERC FITTING FUEL 5/16" -3/8"	1837739



INTERPRET DIMENSIONS AND TOLERANCES PER ANSI Y 14.5 UNLESS OTHERWISE SPECIFIED DIMENSIONS ARE IN INCHES.  
 TOLERANCES: ANGLES = ± .5° .XXX = ± .010  
 .X = ± .1 X = ± 1/16  
 .XX = ± .03  
 DO NOT SCALE DRAWING

DRAWN: R. CRAVEN DATE: 01/15/02 SCALE: NONE  
 DWG. TITLE: FUEL SYSTEM INSTALLATION

BOAT MODEL: 17MTK  
 INIT. REL. ECN NO: 010976

MOLD NO.  
 DWG. NO: 10501

SHT. NO. 2 OF 2



THIS DOCUMENT IS THE PROPERTY OF BOSTON WHALER, INC. MFG. DEPT., EDGEWATER, FLORIDA. ALL RIGHTS ARE RESERVED. THIS DOCUMENT AND INFORMATION CONTAINED MUST NOT BE COPIED OR DISCLOSED TO OTHERS WITHOUT WRITTEN PERMISSION OF BOSTON WHALER, INC.

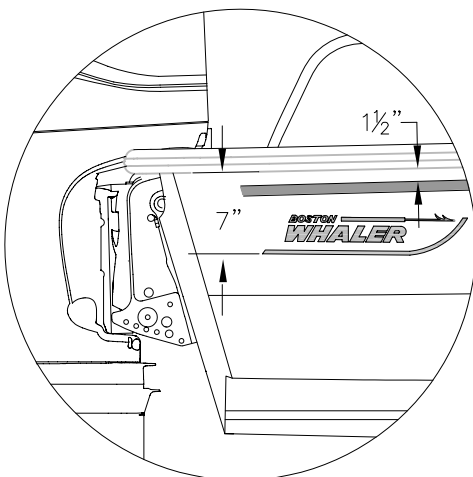
DWG. NO:  
12401

REV.  
D

CURRENT ECD  
060132

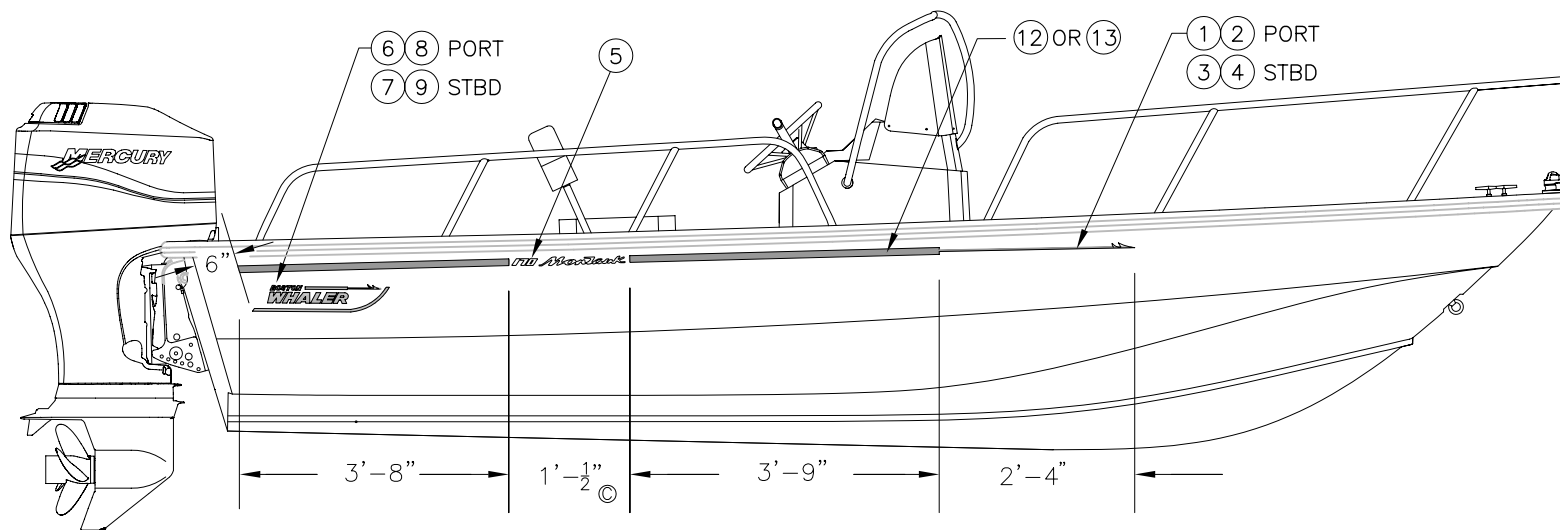
NOTES:

REVISIONS					
REV.	DESCR.	BY	DATE	APPVD.	ECN NO.
D	MODIFY DRAWING BORDER TO AN ATTRIBUTED BORDER	TS	01/24/06	AVM	060132



### PARTS LIST

ITEM	QTY.	OPT.	U/M	DESCRIPTION	B.W.I. NO.
1		1	EA.	DECAL, BW-04 HARPOON PRT DK BLUE	1752933
2	1		EA.	DECAL, BW-04 HARPOON PRT WHLR RED	1752931
3	1		EA.	DECAL, BW-04 HARPOON STB DK BLUE	1752936
4	1		EA.	DECAL, BW-04 HARPOON STB WHLR RED	1752932
5	2		EA.	DECAL, BW-04 17MTK GRY (DRIP MOLD)	1753480
6		1	EA.	DECAL, BW-04 LOGO 20" DK BLUE PRT (DRIP MOLD)	1752939
7		1	EA.	DECAL, BW-04 LOGO 20" DK BLUE STB (DRIP MOLD)	1752940
8	1		EA.	DECAL, BW-04 LOGO 20" RED PRT (DRIP MOLD)	1752937
9	1		EA.	DECAL, BW-04 LOGO 20" RED STB (DRIP MOLD)	1752938
10		2	EA.	DECAL, BW-02 170 CORBIN DK BLUE HIBOSSCAL	1620814
11		2	EA.	DECAL, BW-02 170 FIRE RED HIBOSSCAL	1620749
12	16		FT.	TAPE, SOLID 1" DK BLUE W/GRY PIN STRIP	1754510
13		16	FT.	TAPE, SOLID 1" RED W/GRY PIN STRIP	1754509



INTERPRET DIMENSIONS AND TOLERANCES PER ANSI Y 14.5 UNLESS OTHERWISE SPECIFIED DIMENSIONS ARE IN INCHES.  
 TOLERANCES: ANGLES = ± .5°    .XXX = ± .010  
 .X = ± .1    X = ± 1/16  
 .XX = ± .03    X = ± 1/16  
 DO NOT SCALE DRAWING



CHECKED: R. AVILA	DATE: 01/25/02	DRAWN: H READ	DATE: 01/23/02	SCALE: NONE	BOAT MODEL 17MTK	MOLD NO.
APPD: K. RANIERI	DATE: 01/25/02	DWG. TITLE: GRAPHICS LOCATIONS			INIT. REL. ECN NO: 010976	DWG. NO: 12401
DESIGN: L. SCHOLZ	DATE: 1/25/02					SHT. NO. 1 of 1
INT. ENG: M. GATICA	DATE: 02/11/02					

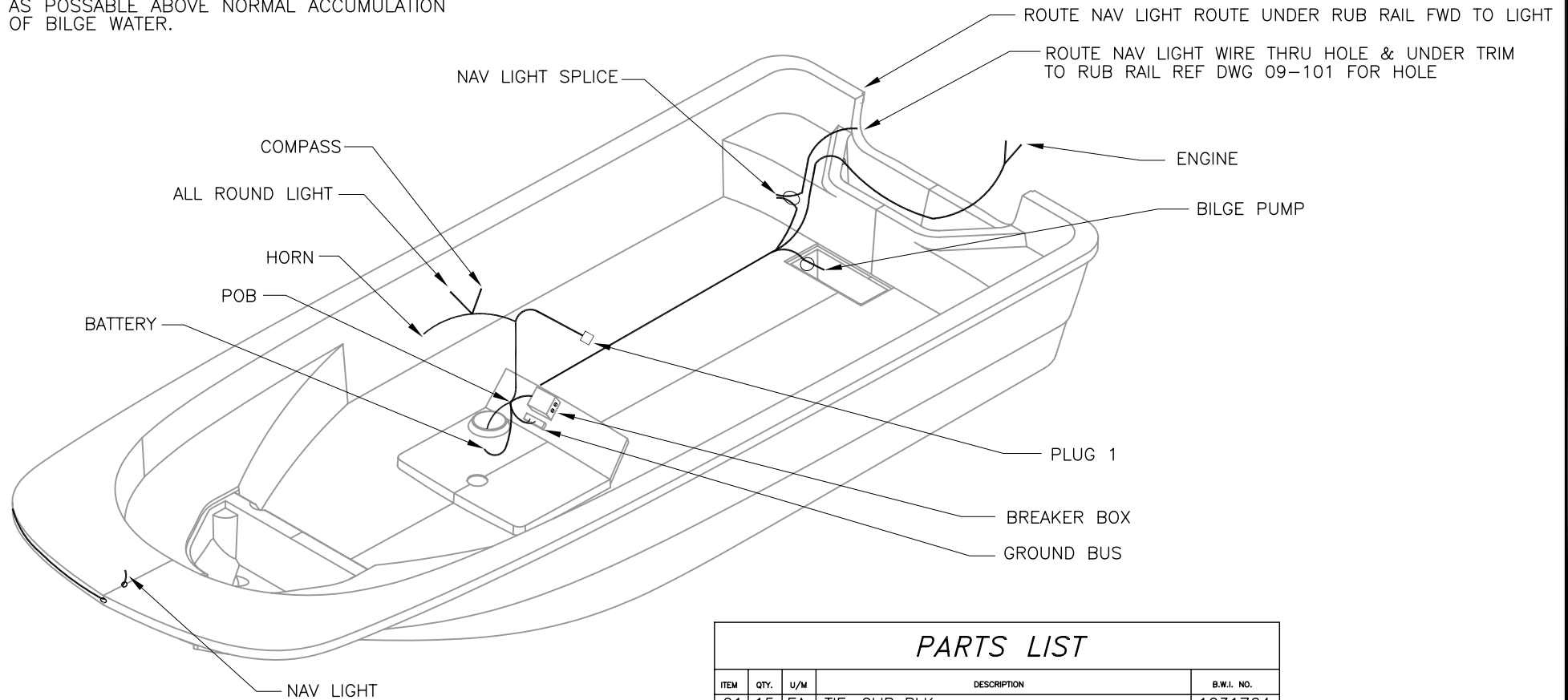
THIS DOCUMENT IS THE PROPERTY OF BOSTON WHALER, INC. MFG. DEPT., EDGEWATER, FLORIDA. ALL RIGHTS ARE RESERVED. THIS DOCUMENT AND INFORMATION CONTAINED MUST NOT BE COPIED OR DISCLOSED TO OTHERS WITHOUT WRITTEN PERMISSION OF BOSTON WHALER, INC.

DWG. NO: 07801  
 REV. C  
 CURRENT ECD 060132

NOTES:

1. SECURE HARNESS w/ITEMS 01,02 & 03 ON 14" MAX CENTERS. INSTALLATION SHALL BEGIN AT "POB".
2. USE ELECTRICAL TAPE AS REQ'D TO RETAIN ALL WIRING INSIDE LOOM.
3. ALL TERMINAL CONNECTIONS SHALL BE CORROSION SEALED USING T-9 SPRAY.
4. SEE DWG. #07-205 FOR HARNESS CONSTRUCTION.
5. ROUTE HARNESS THRU TUBE WITH STEERING & SHIFT THROTTLE CABLES.
6. ALL CONNECTIONS ARE TO BE MADE AS HIGH AS POSSIBLE ABOVE NORMAL ACCUMULATION OF BILGE WATER.

REVISIONS					
REV.	DESCR.	BY	DATE	APPVD.	ECN NO.
A	CHANGED NUMBERING SYSTEM/ APPLY ATT. BORDER	AVM	04/21/03	-	030308
B	MYE '05 DELETED LIVEWELL PUMP	JM	05/25/04	SH	040137
C	MODIFY DRAWING BORDER TO AN ATTRIBUTED BORDER	TS	01/30/06	AVM	060132



PARTS LIST

ITEM	QTY.	U/M	DESCRIPTION	B.W.I. NO.
01	15	EA.	TIE, CLIP BLK	1031764
02	25	EA.	TIE, CABLE 6" LG NYLON BLK	999672
03	15	EA.	SCREW, TAPPING #8A x 5/8" PTH	1010925
04	1	EA.	TAPE, ELECTRICAL VINYL 3/4" x 60YD	912014

INTERPRET DIMENSIONS AND TOLERANCES PER ANSI Y 14.5 UNLESS OTHERWISE SPECIFIED DIMENSIONS ARE IN INCHES.  
 TOLERANCES: ANGLES = ± .5° .XXX = ± .010  
 .X = ± .1 .XX = ± .03 X = ± 1/16  
 DO NOT SCALE DRAWING



CHECKED: RA	DATE: 1/17/02	DRAWN: R. CLIFTON	DATE: 01/16/02	SCALE: NONE	BOAT MODEL 17MTK	MOLD NO.
APPD: R. CLIFTON	DATE: 1/17/02	DWG. TITLE: HARNESS INSTALLATION			INIT. REL. ECN NO: 010976	DWG. NO: 07801
DESIGN: L. SCHOLZ	DATE: 2/8/02					SHT. NO. 1 of 1
INT. ENG: M. GATICA	DATE: 2/11/02					

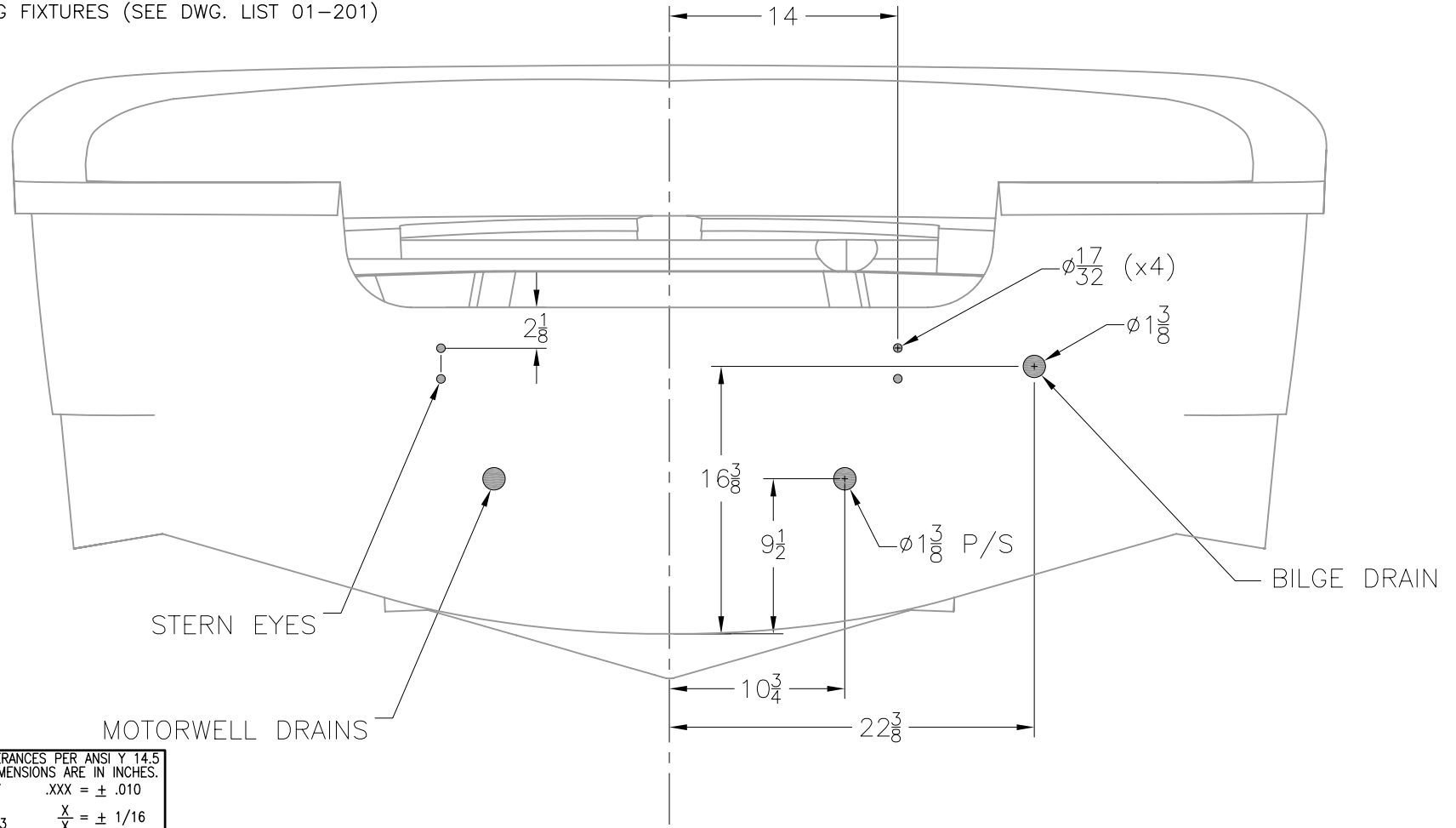
THIS DOCUMENT IS THE PROPERTY OF BOSTON WHALER, INC. MFG. DEPT., EDGEWATER, FLORIDA. ALL RIGHTS ARE RESERVED. THIS DOCUMENT AND INFORMATION CONTAINED MUST NOT BE COPIED OR DISCLOSED TO OTHERS WITHOUT WRITTEN PERMISSION OF BOSTON WHALER, INC.

DWG. NO: 06101 REV. W CURRENT ECD 060631

NOTES:

1. ALL THRU HULL CUTS WHICH WITH EXPOSED WOOD, FOAM OR PHENOLIC MUST BE SEALED USING WHITE CATALYZED GEL COAT.
2. ALL THRU HULLS IN THE BOTTOM OF THE HULL MUST PASS THROUGH A CURED PUTTY BOX.
3. ALL THRU HULLS SHALL BE INSTALLED USING MARINE ADHESIVE CAULK ON INTERNAL & EXTERNAL GEL COAT SURFACES.
4. ALL FASTENINGS INTO THE HULL MUST BE SEALED WITH MARINE ADHESIVE, SEATED FLUSH AND HAVE NO BURRS.
5. USE DRILLING FIXTURES (SEE DWG. LIST 01-201)

REVISIONS					
REV.	DESCR.	BY	DATE	APPVD.	ECN NO.
T	CHANGED PN# & DESCRIPTION ITEMS 27, 32, 42, ADDED 57, SHEETS 3 THRU 6 & 8	SLJ	03/02/06	ME	051172
U	ADD 60-62, 5 WAS QNT 5, 6 WAS QNT 5	SWH	03/07/06	ME	050544
V	#48 WAS 1007764	SWH	05/26/06	AVM	0604144
W	CHANGED PN# & DESCRIPTION ITEMS 13 & 31, SHEET 8	SLJ/SL	07/12/06		060631



INTERPRET DIMENSIONS AND TOLERANCES PER ANSI Y 14.5 UNLESS OTHERWISE SPECIFIED DIMENSIONS ARE IN INCHES.  
 TOLERANCES: ANGLES =  $\pm .5^\circ$  .XXX =  $\pm .010$   
 .X =  $\pm .1$  X =  $\pm 1/16$   
 .XX =  $\pm .03$  X =  $\pm 1/16$   
 DO NOT SCALE DRAWING



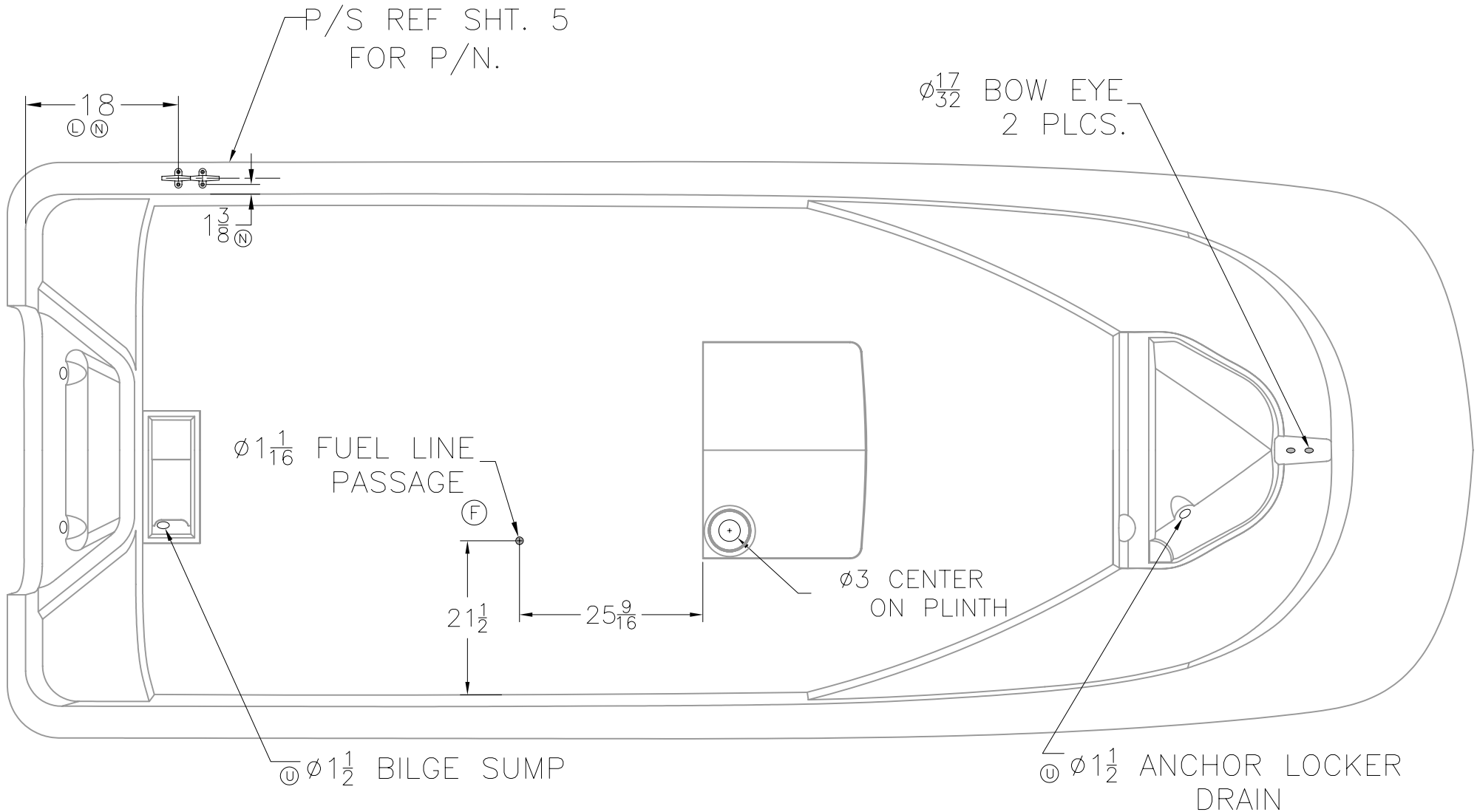
CHECKED: R. AVILA	DATE: 01/29/02	DRAWN: R. CRAVEN	DATE: 12/19/02	SCALE: NONE	BOAT MODEL 17MTK	MOLD NO.
APPD: K. RANIERI	DATE: 01/29/02	DWG. TITLE: HULL CUTOUTS & OUTFIT			INIT. REL. ECN NO: 01-09-76	DWG. NO: 06101
DESIGN: L. SCHOLZ	DATE: 01/29/02				SHT. NO. 1	OF 8
INT. ENG: M. GATICA	DATE: 02/11/02					

THIS DOCUMENT IS THE PROPERTY OF BOSTON WHALER, INC. MFG. DEPT., EDGEWATER, FLORIDA. ALL RIGHTS ARE RESERVED. THIS DOCUMENT AND INFORMATION CONTAINED MUST NOT BE COPIED OR DISCLOSED TO OTHERS WITHOUT WRITTEN PERMISSION OF BOSTON WHALER, INC.

DWG. NO:  
06101

REV.  
W

CURRENT ECD  
060631



INTERPRET DIMENSIONS AND TOLERANCES PER ANSI Y 14.5 UNLESS OTHERWISE SPECIFIED DIMENSIONS ARE IN INCHES.  
 TOLERANCES: ANGLES = ± .5° .XXX = ± .010  
 .X = ± .1 X = ± 1/16  
 .XX = ± .03  
 DO NOT SCALE DRAWING

DRAWN: R. CRAVEN DATE: 12/19/02 SCALE: NONE

DWG. TITLE:  
HULL CUTOUTS AND OUTFIT

BOAT MODEL  
17MTK

MOLD NO.

INIT. REL. ECN NO: DWG. NO:  
01-09-76 06101

SHT. NO.

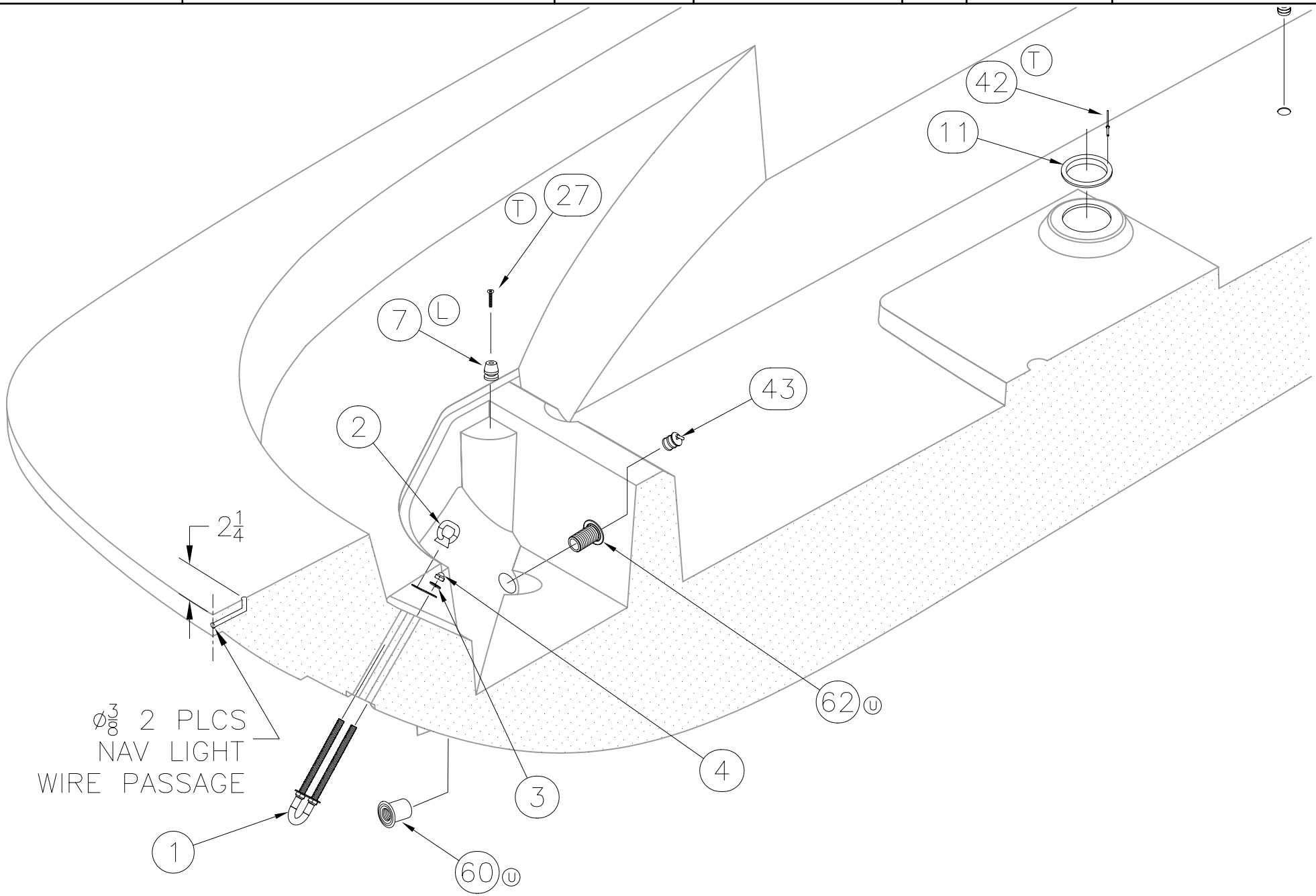
2 OF 8

THIS DOCUMENT IS THE PROPERTY OF BOSTON WHALER, INC. MFG. DEPT., EDGEWATER, FLORIDA. ALL RIGHTS ARE RESERVED. THIS DOCUMENT AND INFORMATION CONTAINED MUST NOT BE COPIED OR DISCLOSED TO OTHERS WITHOUT WRITTEN PERMISSION OF BOSTON WHALER, INC.

DWG. NO:  
06101

REV.  
W

CURRENT ECD  
060631



Ø 3/8 2 PLCS  
NAV LIGHT  
WIRE PASSAGE



INTERPRET DIMENSIONS AND TOLERANCES PER ANSI Y 14.5 UNLESS OTHERWISE SPECIFIED DIMENSIONS ARE IN INCHES.  
TOLERANCES: ANGLES = ± .5° .XXX = ± .010  
.X = ± .1 X = ± 1/16  
.XX = ± .03  
DO NOT SCALE DRAWING

DRAWN: R. CRAVEN DATE: 12/19/02 SCALE: NONE  
DWG. TITLE: HULL CUTOUTS AND OUTFIT

BOAT MODEL: 17MTK  
INIT. REL. ECN NO: 01-09-76

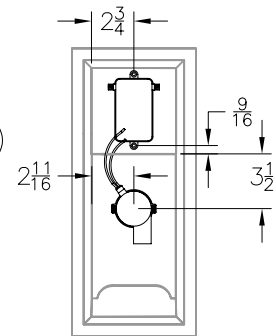
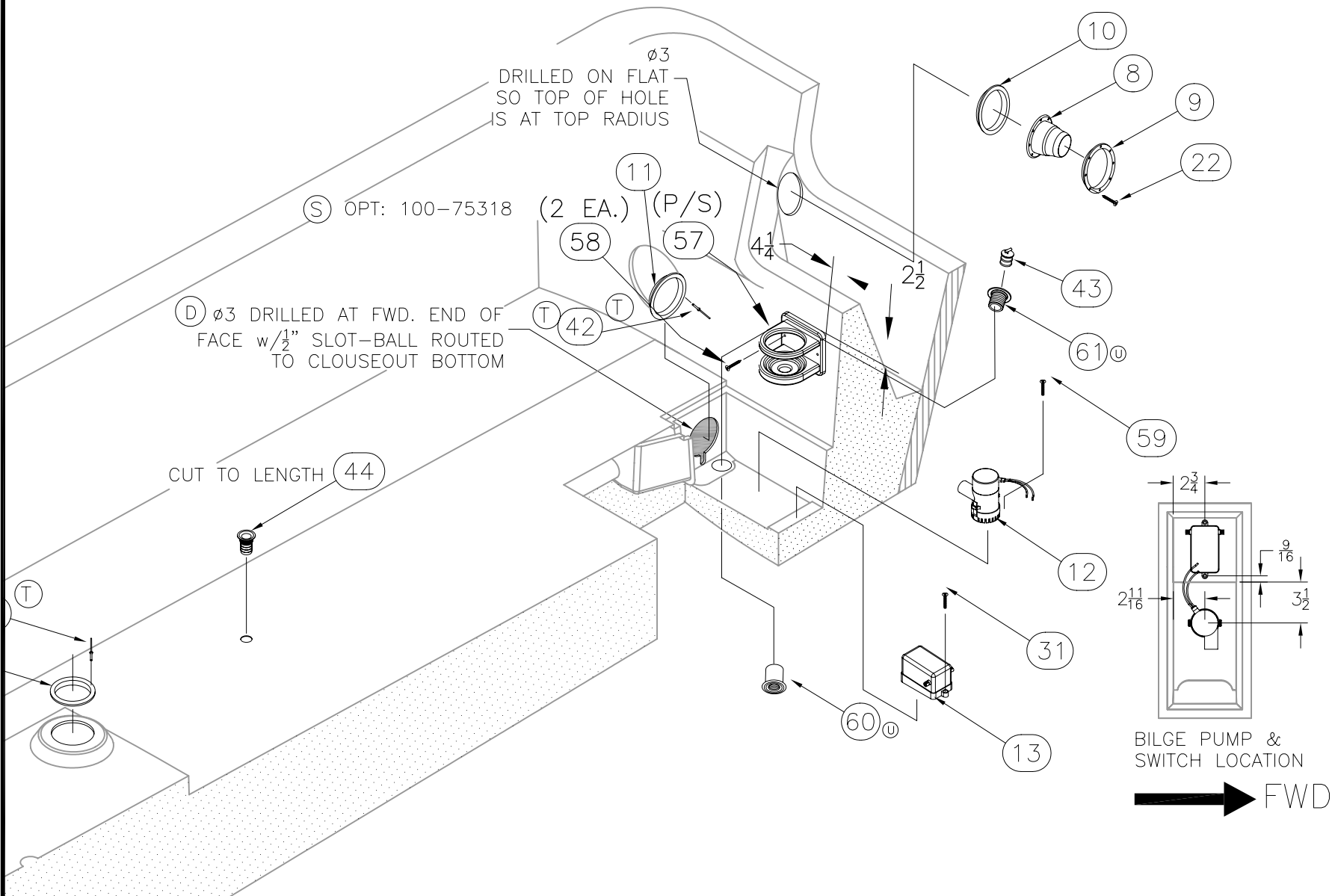
MOLD NO.  
DWG. NO: 06101  
SHT. NO: 3 OF 8

THIS DOCUMENT IS THE PROPERTY OF BOSTON WHALER, INC. MFG. DEPT., EDGEWATER, FLORIDA. ALL RIGHTS ARE RESERVED. THIS DOCUMENT AND INFORMATION CONTAINED MUST NOT BE COPIED OR DISCLOSED TO OTHERS WITHOUT WRITTEN PERMISSION OF BOSTON WHALER, INC.

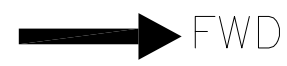
DWG. NO:  
06101

REV.  
W

CURRENT ECD  
060631



BILGE PUMP & SWITCH LOCATION



INTERPRET DIMENSIONS AND TOLERANCES PER ANSI Y 14.5 UNLESS OTHERWISE SPECIFIED DIMENSIONS ARE IN INCHES.  
TOLERANCES: ANGLES = ± .5° .XXX = ± .010  
.X = ± .1 X = ± 1/16  
.XX = ± .03

DO NOT SCALE DRAWING

DRAWN: R. CRAVEN DATE: 12/19/02 SCALE: NONE  
DWG. TITLE: HULL CUTOUTS AND OUTFIT

BOAT MODEL  
17MTK

MOLD NO.

INIT. REL. ECN NO:  
01-09-76

DWG. NO:  
06101

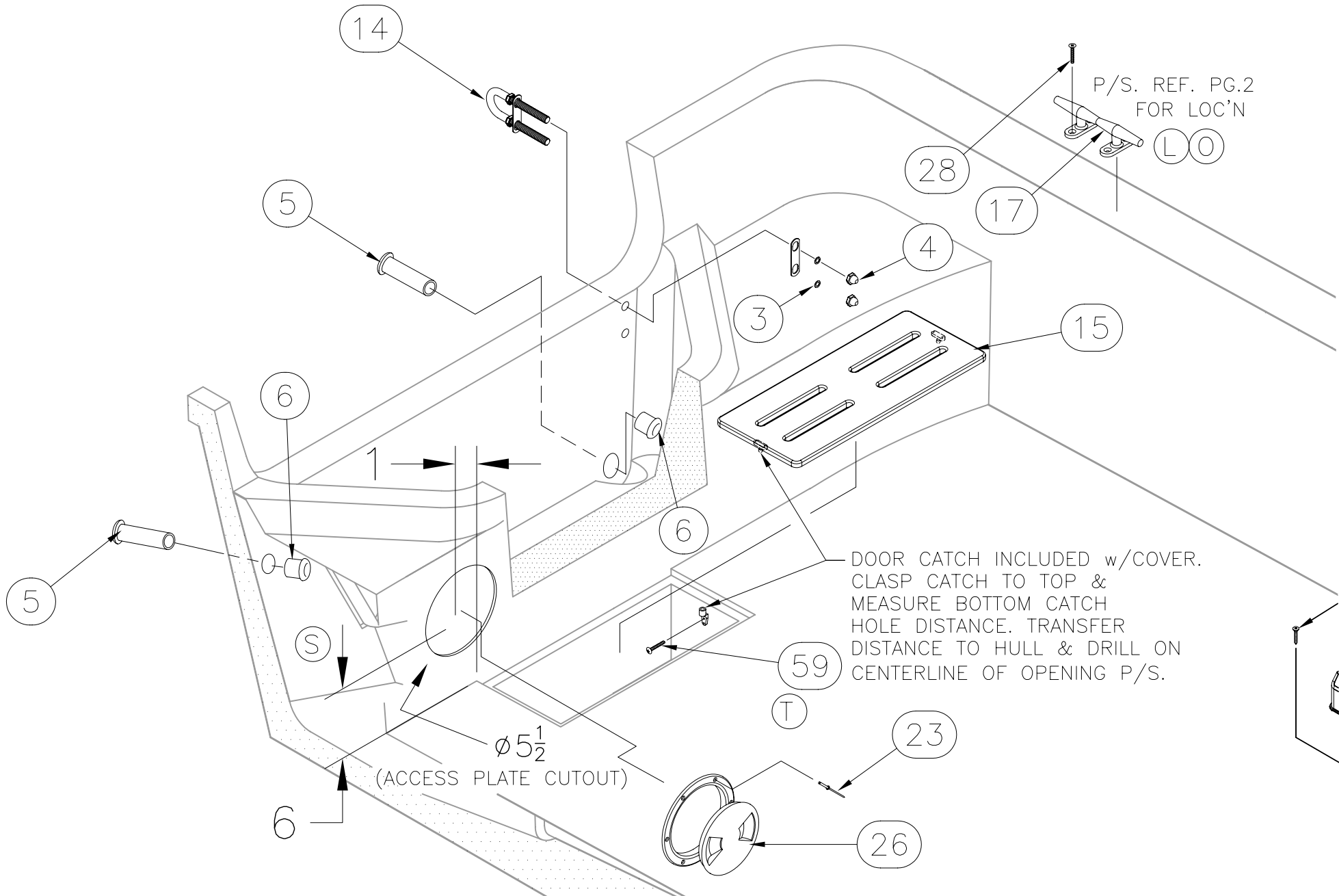
SHT. NO.  
4 OF 8

THIS DOCUMENT IS THE PROPERTY OF BOSTON WHALER, INC. MFG. DEPT., EDGEWATER, FLORIDA. ALL RIGHTS ARE RESERVED. THIS DOCUMENT AND INFORMATION CONTAINED MUST NOT BE COPIED OR DISCLOSED TO OTHERS WITHOUT WRITTEN PERMISSION OF BOSTON WHALER, INC.

DWG. NO:  
06101

REV.  
W

CURRENT ECD  
060631



DOOR CATCH INCLUDED w/COVER.  
CLASP CATCH TO TOP &  
MEASURE BOTTOM CATCH  
HOLE DISTANCE. TRANSFER  
DISTANCE TO HULL & DRILL ON  
CENTERLINE OF OPENING P/S.



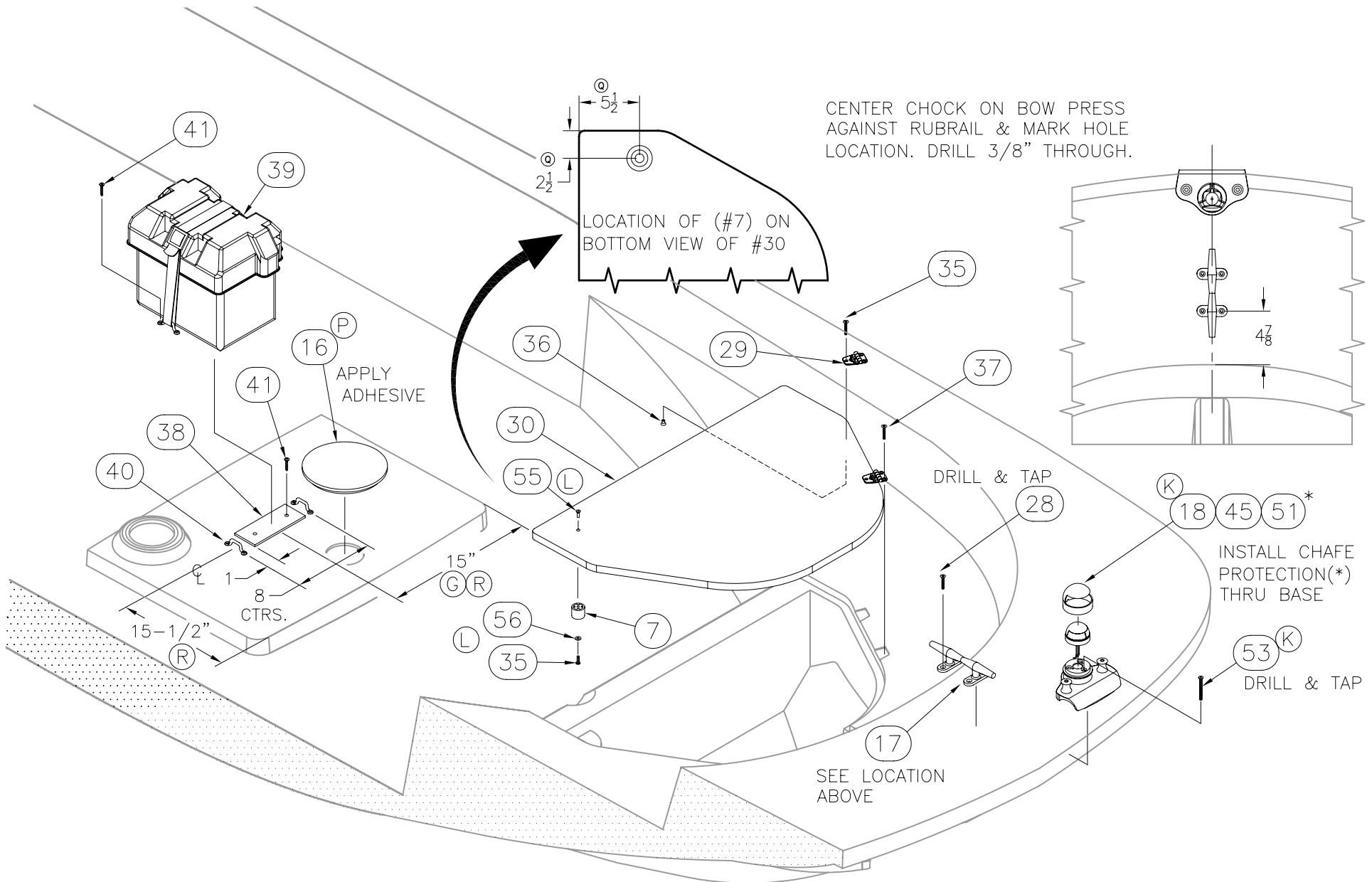
INTERPRET DIMENSIONS AND TOLERANCES PER ANSI Y 14.5 UNLESS OTHERWISE SPECIFIED DIMENSIONS ARE IN INCHES.  
TOLERANCES: ANGLES = ± .5° .XXX = ± .010  
.X = ± .1 .XX = ± .03 X = ± 1/16  
DO NOT SCALE DRAWING

DRAWN: R. CRAVEN DATE: 12/19/02 SCALE: NONE  
DWG. TITLE: HULL CUTOUTS AND OUTFIT

BOAT MODEL: 17MTK  
INIT. REL. ECN NO: 01-09-76

MOLD NO.  
DWG. NO: 06101

SHT. NO. 5 OF 8



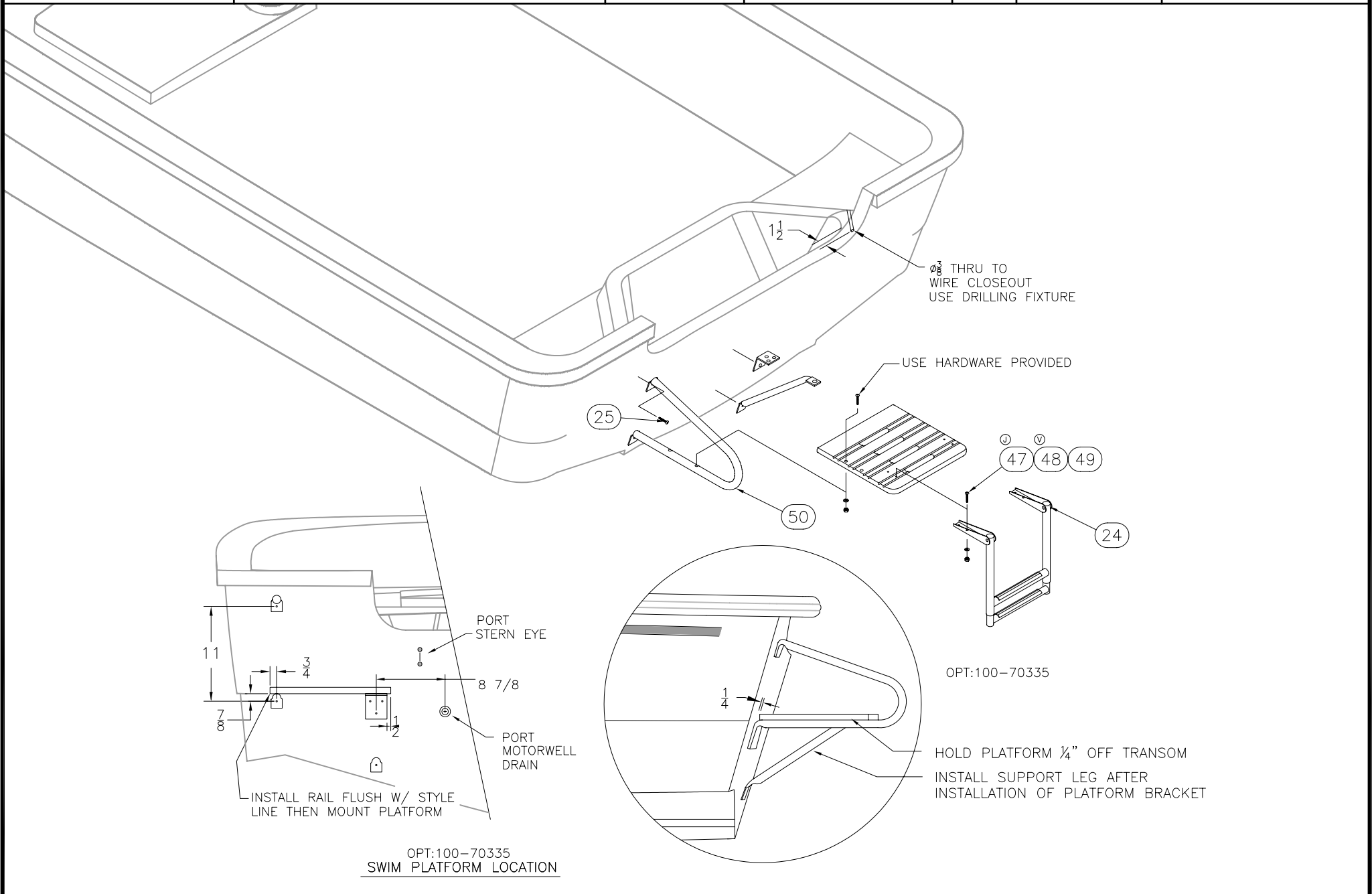


THIS DOCUMENT IS THE PROPERTY OF BOSTON WHALER, INC. MFG. DEPT., EDGEWATER, FLORIDA. ALL RIGHTS ARE RESERVED. THIS DOCUMENT AND INFORMATION CONTAINED MUST NOT BE COPIED OR DISCLOSED TO OTHERS WITHOUT WRITTEN PERMISSION OF BOSTON WHALER, INC.

DWG. NO:  
06101

REV.  
W

CURRENT ECD  
060631



OPT:100-70335  
SWIM PLATFORM LOCATION



INTERPRET DIMENSIONS AND TOLERANCES PER ANSI Y 14.5 UNLESS OTHERWISE SPECIFIED DIMENSIONS ARE IN INCHES.  
TOLERANCES: ANGLES = ± .5° .XXX = ± .010  
.X = ± .1 X = ± 1/16  
.XX = ± .03

DO NOT SCALE DRAWING

DRAWN: R. CRAVEN DATE: 12/19/02 SCALE: NONE  
DWG. TITLE: HULL CUTOUTS AND OUTFIT

BOAT MODEL: 17MTK  
INIT. REL. ECN NO: 01-09-76

MOLD NO.  
DWG. NO: 06101  
SHT. NO. 7 OF 8

THIS DOCUMENT IS THE PROPERTY OF BOSTON WHALER, INC. MFG. DEPT. EDGEWATER, FLORIDA. ALL RIGHTS ARE RESERVED. THIS DOCUMENT AND INFORMATION CONTAINED MUST NOT BE COPIED OR DISCLOSED TO OTHERS WITHOUT WRITTEN PERMISSION OF BOSTON WHALER, INC.

DWG. NO: 06101  
 REV. W  
 CURRENT ECD 060631

(I)  
(U)  
(W)  
(P)  
(O)  
(L)  
(K)  
(K)  
(K)  
(B)  
(B)  
(T)  
(L)  
(W)  
(T)  
(B)  
(T)  
(K)  
(H)  
(B)  
(T)  
(B)  
(C)  
(J)  
(V)  
(B)  
(C)  
(K)  
(L)  
(L)  
(S)  
(S)  
(T)  
(U)  
(U)  
(U)

Parts List				
ITEM	QTY	U/M	DESCRIPTION	B.W.I. NO.
1	1	EA.	EYE, BOW 1/2" x 8-3/4" SS	1690181
2	1	EA.	LIFT RING, BW-03 BOW EYE NUT 1/2" SS	1750950
3	5	EA.	WASHER, LOCK/SPLIT 1/2" SC	1326214
4	5	EA.	NUT, ACORN #1/2"-13 SC	1662402
5	3	EA.	THRU-HULL, PVC PRESS-FIT	1042084
6	3	EA.	NUT, PVC RETAINING THRU-HULL	1042068
7	1	EA.	STOP, DOOR HOLDER RBR BLUE	1142348
8	1	EA.	BOOT, CABLE 3" BLK	1043223
9	1	EA.	BOOT, CABLE RING 3" BLK	1043330
10	1	EA.	GROMMET, CABLE BOOT 3" BLK	1574839
11	2	EA.	GROMMET, VENT HOSE 3" BLK	1580810
12	1	EA.	PUMP, BILGE 1100GPH	1480094
13	1	EA.	SWITCH, FLOAT RULE W/CVR MERCURY FREE	1849537
14	2	EA.	EYE, BOW 1/2" x 3-7/16" SS	0126557
15	1	EA.	COVER, HDPE BW170MT-02 BILGE SUMP	1689752
16	1	EA.	COVER, ABS BW140/160DA-99 7.75" POUR HOLE WHT	1210756
17	3	EA.	CLEAT, 8" 4-BOLT SS	0291658
18	1	EA.	CHOCK, BOW BW-03 W/BOLLARDS SS	1748820
19	1	EA.	CHOCK, BOW 17'	1033067
20	1	EA.	SHIM, HDPE BW170MT-02 BOW CHOCK	1690172
21	1	EA.	PLATE, ALUM BW170MT-02 BOW LIGHT BACK UP	1690170
22	6	EA.	SCREW, TAPPING #8A X 1" PTH SC	1008804
23	6	EA.	RIVET, POP/BLIND #3/16 X 5/8" ALUM	189415
24	1	EA.	LADDER, SWIM 2-STEP TELESCOP OVER PLTFRM	0935577
25	6	EA.	SCREW, TAPPING #14A x 1.5" PPH SC	1008697
26	1	EA.	ACCESS PLATE, POLYPROP TWIST-OUT 5" WHT BWI	1016153
27	1	EA.	SCREW, TAPPING #10A X 1.5" PPH SC	1010610
28	12	EA.	SCREW, MACHINE #1/4-20 X 1.25" PFH SC	1213289
29	2	EA.	HINGE, DOOR SS 1.5"X 3" THINLINE	1617323
30	1	EA.	FIBERGLASS PART, ANCHOR LOCKER COVER	22-K086-00
31	2	EA.	SCREW, TAPPING #8A X 1.25" PTH SC	1130053
32	2	EA.	SCREW, TAPPING #8A X 5/8" PTH SC	1010925
33	2	EA.	SCREW, MACHINE #5/16-18 X 3.5" POH SC	1259464
34	1	EA.	SCREW, MACHINE #10-24 X 1.25" PPH SC	1008630
35	7	EA.	SCREW, MACHINE #10-24 X 3/4" POH SC	1008440
36	6	EA.	NUT, BBL #10-24 X 3/8" FH	1040187
37	5	EA.	SCREW, TAPPING #10A X 1" POH SC	1008507
38	1	EA.	CLEAT, HDPE BW-02 BATTERY BOX WHT	1618602
39	1	EA.	HOLDER, BATTERY GR24 FULLY ENCL	0650598
40	2	EA.	BRACKET, BW-97 BATT HOLDDOWN 1.25"CHR/PLT	1042837
41	6	EA.	SCREW, TAPPING #8A X 1" POH SS	0150805
42	6	EA.	RIVET, POP/BLIND #1/8 X 1/4" ALUM	1007855
43	2	EA.	PLUG, BRASS 1" DRAIN TURN-TITE	0133371
44	1	EA.	DRAIN, 1" IMPACT W/BARB BLK	1041888
45	2	EA.	SCREW, MACHINE #6-32 X 1" PPH SC	1008671
46	1	EA.	BUSHING, PLAS 2" KNOCK-OUT	1039569
47	4	EA.	SCREW, MACHINE #1/4-20 x 2 " PPH SC	1008614
48	4	EA.	NUT, LOCK #1/4-20 SC STD PATT	1009786
49	4	EA.	WASHER, FLAT # 1/4" SC	1260769
50	1	EA.	PLATFORM, HDPE BW170-02 SWIM W/RAIL	1690520
51	.75	FT.	HOSE, CONDUIT/SPLIT 1/4" FLAME RETARDANT	1501808
52	1	EA.	NUT, HEX NYLON LOCK #10-24 SC	1007772
53	3	EA.	SCREW, MACHINE #1/4-20 X 2.5" PFH SC	1326156
55	1	EA.	NUT, BBL #10-24 X 3/8" TH CHR/BR	1040211
56	1	EA.	WASHER, FLAT #10 SC	1260751
57	2	EA.	HOLDER, HDPE BW170DIS-05 DRINK	1797608
58	4	EA.	SCREW, TAPPING #10A X 1.5" PTH SC	1008747
59	4	EA.	SCREW, TAPPING #6A X 3/4" PTH SC	1010917
60	2	EA.	THRU-HULL, MARELON BW-06 SHORT FEMALE	1806032
61	1	EA.	THRU-HULL, MARELON BW-06 SHORT MALE	1806031
62	1	EA.	THRU-HULL, MARELON BW-06 LONG MALE	1806030

DRAWN: R. CRAVEN  
 DATE: 12/19/02  
 SCALE: NONE  
 BOAT MODEL: 17MTK  
 MOLD NO.:

INTERPRET DIMENSIONS AND TOLERANCES PER ANSI Y 14.5 UNLESS OTHERWISE SPECIFIED DIMENSIONS ARE IN INCHES.  
 TOLERANCES: ANGLES = ± .5° .XXX = ± .010  
 .X = ± .1 X = ± 1/16  
 .XX = ± .03 X = ± .03  
 DO NOT SCALE DRAWING



THIS DOCUMENT IS THE PROPERTY OF BOSTON WHALER, INC. MFG. DEPT., EDGEWATER, FLORIDA. ALL RIGHTS ARE RESERVED. THIS DOCUMENT AND INFORMATION CONTAINED MUST NOT BE COPIED OR DISCLOSED TO OTHERS WITHOUT WRITTEN PERMISSION OF BOSTON WHALER, INC.

DWG. NO: 12101 REV. J CURRENT ECD 060242

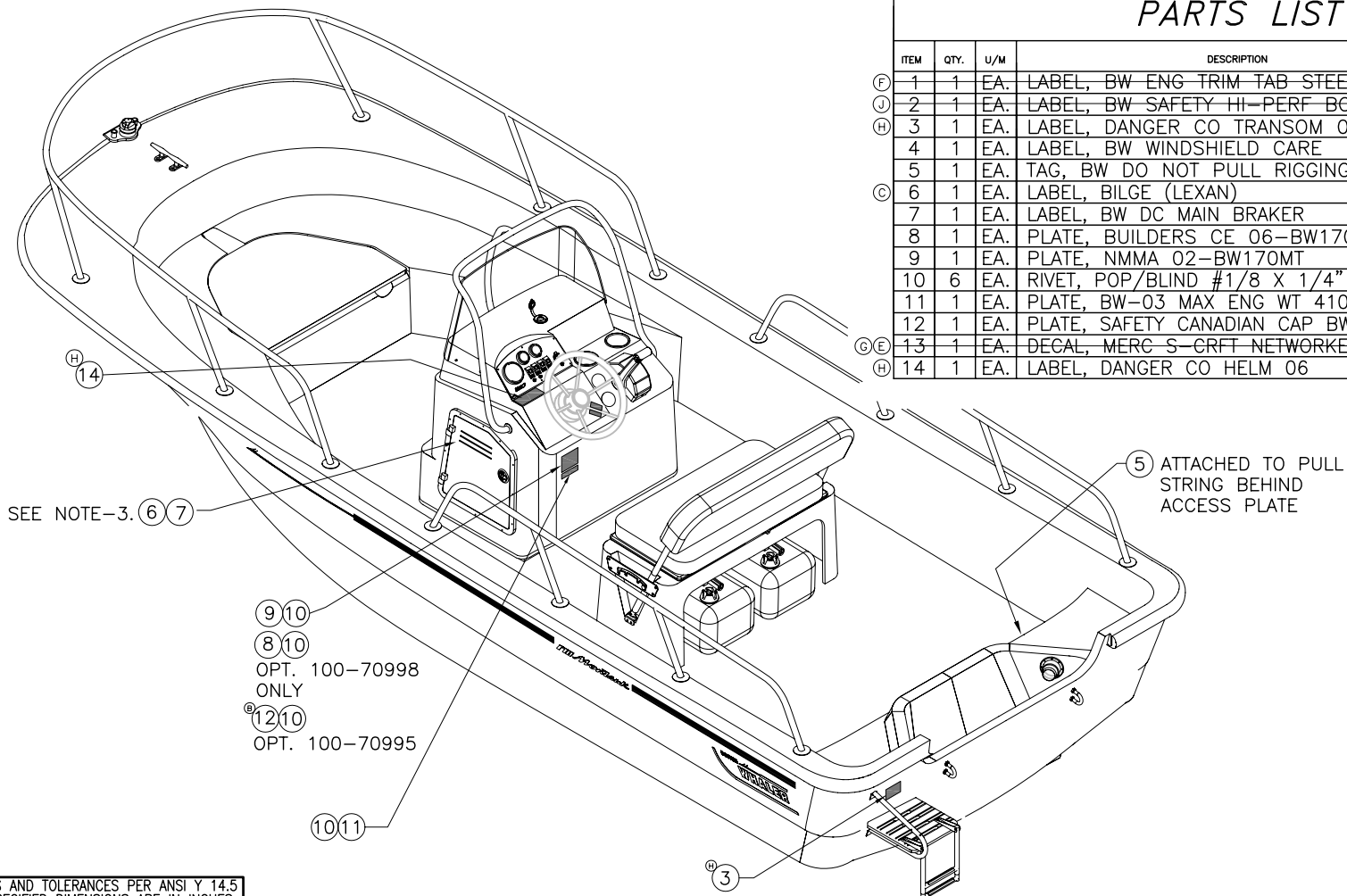
**NOTES:**

- CLEAN ALL AREAS WITH DENATURED ALCOHOL BEFORE APPLYING LABELS.
- LABEL 4 SHALL BE INCLUDED IN OWNERS DOCUMENTS PACKET.
- 6, 7 ARE ON BREAKER BOX IN CONSOLE UNDER HELM.

REVISIONS					
REV.	DESCR.	BY	DATE	APPVD.	ECN NO.
F	DELETED ITEM #1, STEERING PULL LABEL.	SL	6/1/04	ZAC	03-11-03
G	MYE '06: DELETE OPT: 020-70263, & #13	MRZ	04/07/5	MG	05-03-43
H	ADDED ITEM #14; ITEM #3 P/N 1811367 WAS 1016948.	SL	10/25/05	ME	050750
I	CHANGED ITEM# 8 TO PART# 1817892 AND UPDATED DISCRPTION	GD	11/18/05	ME	051147
J	DELETED ITEM 2	SLJ	05/24/06	AVM	060242

**PARTS LIST**

ITEM	QTY.	U/M	DESCRIPTION	B.W.I. NO.
F	1	EA.	LABEL, BW ENG TRIM TAB STEERING PULL	1016518
J	2	EA.	LABEL, BW SAFETY HI-PERF BOAT	1017136
H	3	EA.	LABEL, DANGER CO TRANSOM 06	1811367
	4	EA.	LABEL, BW WINDSHIELD CARE	1016955
	5	EA.	TAG, BW DO NOT PULL RIGGING	999755
C	6	EA.	LABEL, BILGE (LEXAN)	1745123
	7	EA.	LABEL, BW DC MAIN BRAKER	1075282
	8	EA.	PLATE, BUILDERS CE 06-BW170MT	1817892
	9	EA.	PLATE, NMMA 02-BW170MT	1689636
	10	6	RIVET, POP/BLIND #1/8 X 1/4" ALUM	1007855
	11	1	EA. PLATE, BW-03 MAX ENG WT 410LB/185KG	1735926
	12	1	EA. PLATE, SAFETY CANADIAN CAP BW17MTK-03	1746015
G E	13	1	EA. DECAL, MERC S-CRFT NETWORKED	1743323
H	14	1	EA. LABEL, DANGER CO HELM 06	1811368



SEE NOTE-3. (6) (7)

(9) (10)  
(8) (10)  
OPT. 100-70998  
ONLY  
(12) (10)  
OPT. 100-70995

(5) ATTACHED TO PULL STRING BEHIND ACCESS PLATE

(3) 4" DOWN FROM RUBRAIL, CENTERED IN LADDER (OPT: 100-70335)

INTERPRET DIMENSIONS AND TOLERANCES PER ANSI Y 14.5 UNLESS OTHERWISE SPECIFIED DIMENSIONS ARE IN INCHES.  
TOLERANCES: ANGLES = ± .5° .XXX = ± .010  
.X = ± .1 .XX = ± .03 X = ± 1/16  
DO NOT SCALE DRAWING



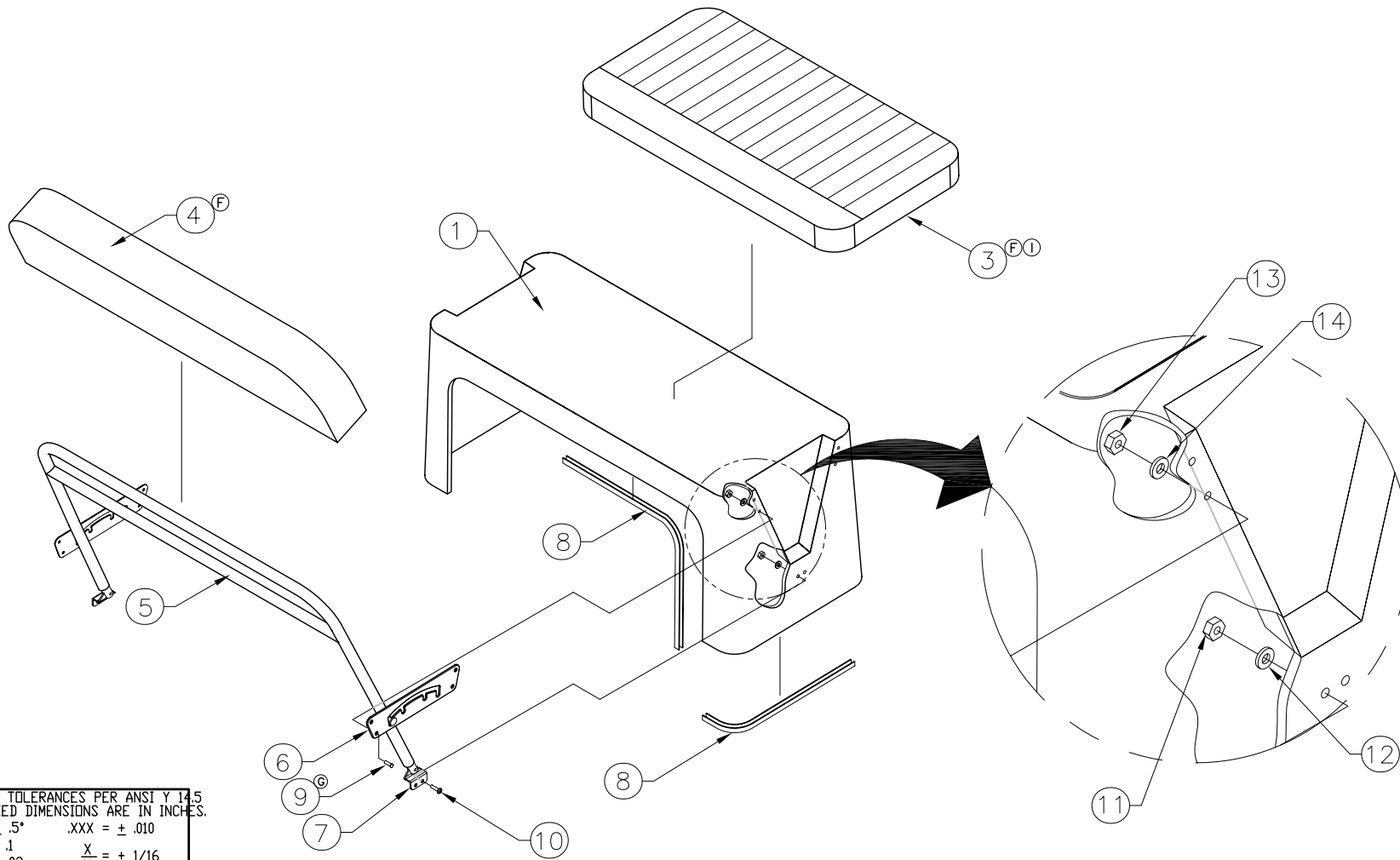
CHECKED: R. AVILA	DATE: 1/28/02	DRAWN: H READ	DATE: 012302	SCALE: NTS	BOAT MODEL 17MTK	MOLD NO.
APPD: K. RANIERI	DATE: 1/28/02	DWG. TITLE: LABEL LOCATIONS			INIT. REL. ECN NO: 010976	DWG. NO: 12101
DESIGN: L. SCHOLZ	DATE: 1/28/02				SHT. NO. 1 of 1	
INT. ENG: M. GATICA	DATE: 2/11/02					

THIS DOCUMENT IS THE PROPERTY OF BOSTON WHALER, INC. MFG. DEPT., EDGEWATER, FLORIDA. ALL RIGHTS ARE RESERVED. THIS DOCUMENT AND INFORMATION CONTAINED MUST NOT BE COPIED OR DISCLOSED TO OTHERS WITHOUT WRITTEN PERMISSION OF BOSTON WHALER, INC.

DWG. NO: 09251	REV. I	CURRENT ECD 060385
-------------------	-----------	-----------------------

1. USE DRILLING FIXTURE (SEE DWG LIST 01-201)

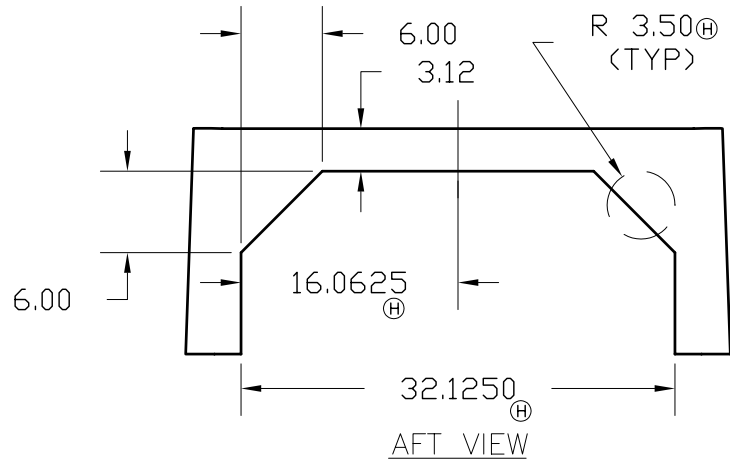
REVISIONS					
REV.	DESCR.	BY	DATE	APPVD.	ECN NO.
D	Changed Numbering System/Apply Att.Border.	AVM	06/23/03	ZAC	03-06-40
E	CHANGED PN# ITEM 8, SHEET 3, WAS 1757260, ADDED TRIM NOTE SHEET 2	SLJ	06/19/03	ZAC	03-06-28
F	ITEM #03 P/N 1781381 WAS 1331453 & 1781385 WAS 1006691.	SL	07/20/05	ME	04-06-36
G	CHANGED PN# & DESCRIPTION ITEMS 9 & 16	SLJ	12/09/05	ME	051116
H	CHANGED DIMENSIONS FOR CUTOUT, 16.0625 WAS 16.321250 WAS 32.25 WAS 35	CSR	1/4/06	ME	05-12-01
I	MYE '07: ITEM #3 WAS 1781381	AT	04/13/06		06-03-85



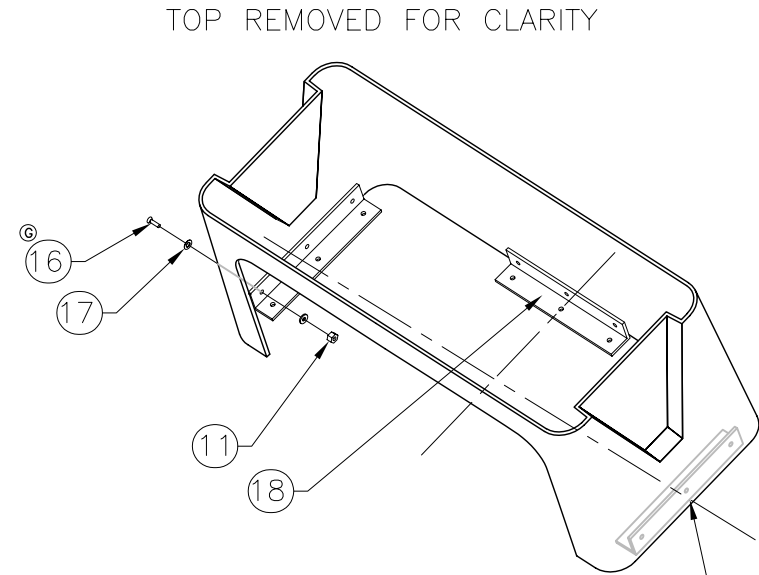
INTERPRET DIMENSIONS AND TOLERANCES PER ANSI Y 14.5 UNLESS OTHERWISE SPECIFIED DIMENSIONS ARE IN INCHES.  
 TOLERANCES: ANGLES = ± .5° .XXX = ± .010  
 .X = ± .1 .XX = ± .03 X = ± 1/16  
 DO NOT SCALE DRAWING



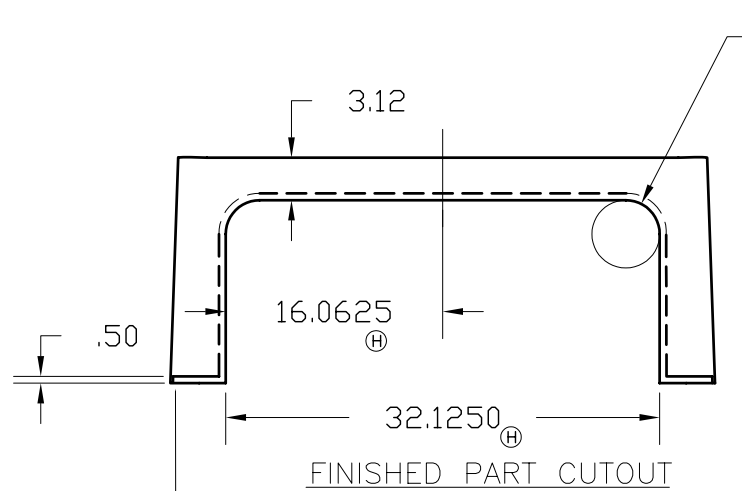
CHECKED: R. AVILA	DATE: 1/24/02	DRAWN: F. BENSON	DATE: 01/07/02	SCALE: NONE	BOAT MODEL 17MTK	MOLD NO.
APPD: K. RANIERI	DATE: 1/24/02	DWG. TITLE: REV PILOT SEAT SUB ASSEMBLY			INIT. REL. ECN NO: 010976	DWG. NO: 09251
DESIGN: L. SCHOLZ	DATE: 01/24/02					SHT. NO. 1 OF 3
INT. ENG: M. GATICA	DATE: 2/11/02					



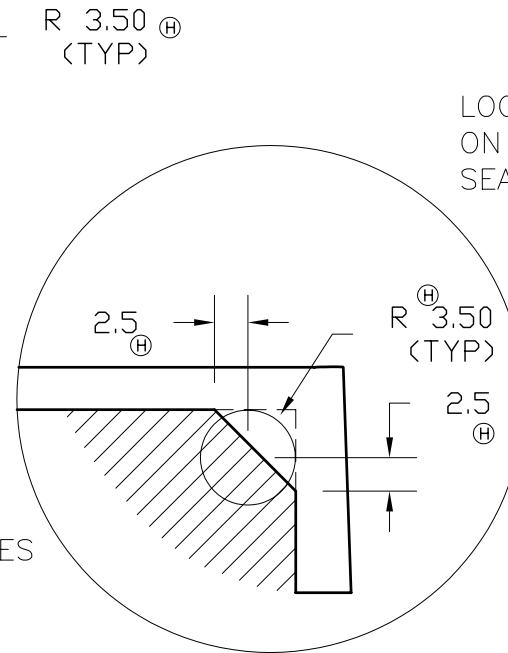
AFT VIEW  
REVERSIBLE PILOT SEAT CUT-OUT  
(SEE NOTE, SHT 1)



LOCATE ALL BRACKETS  
ON CENTERLINE OF  
SEAT BASE



(E) NOTE: TRIM BOTTOM AND AFT EDGES  
1/2" HIGH AT 3/16" THICK



THIS DOCUMENT IS THE PROPERTY OF BOSTON WHALER, INC. MFG. DEPT.,  
EDGEWATER, FLORIDA. ALL RIGHTS ARE RESERVED. THIS DOCUMENT AND  
INFORMATION CONTAINED MUST NOT BE COPIED OR DISCLOSED TO OTHERS  
WITHOUT WRITTEN PERMISSION OF BOSTON WHALER, INC.

DWG. NO:  
09251

REV.  
I

CURRENT ECD  
060385

## BILL OF MATERIAL

ITEM	QTY.	U/M	DESCRIPTION	B.W.I. NO.
Ⓑ	01	1	EA FIBERGLASS PART, REVERS. PILOT SEAT	22K17300
Ⓑ	02	1	EA BASE, HDPE BW170MT-02 REV SEAT	1690190
①Ⓕ	03	1	EA CUSH, BW150/170MT-07 REV SEAT BASE	1838162
Ⓕ	04	1	EA CUSH, BW17MTK-05 REV SEAT B/R	1781385
	05	1	EA SUPPORT, SS BWDA-99 REV SEAT W/B/R	1187053
	06	2	EA PLATE, BWDA-01 REV SEAT SS	1566272
	07	2	EA BRACKET, BWDA-01 REV SEAT SS/DELRIN	1566280
ⒺⒸ	08	12	FT TRIM, EDGE WHITE FLEX U-TRIM	1020965
Ⓖ	09	8	EA SCREW, MACHINE #10-24 X 7/8" POH SC	1008457
	10	4	EA SCREW, MACH 1/4-20 x 1" PPH SC	1008580
	11	13	EA NUT, LOCK 1/4-20 SC STD PATT	1009786
	12	4	EA WASHER, FLAT 1/4" SC	1260769
	13	8	EA NUT, HEX NYLON LOCK #10-24 SC	1007772
	14	8	EA WASHER, FLAT #10 SC	1260751
Ⓑ	15	6	EA SCREW, TAPPING #10A x 1" POH SC	1008507
	16	9	EA SCREW, MACHINE #1/4-20 X 1.25" PFH SC	1213289
	17	9	EA WASHER, FINISH #12 SS	0958868
	18	3	EA BRACKET, BW-97 ALUM 1/4" x 2" x 2" x 12"	1030428



INTERPRET DIMENSIONS AND TOLERANCES PER ANSI Y 14.5  
UNLESS OTHERWISE SPECIFIED DIMENSIONS ARE IN INCHES  
TOLERANCES: ANGLES = ± .5°      .XXX = ± .010  
                  .X = ± .1                X = ± 1/16  
                  .XX = ± .03

DO NOT SCALE DRAWING

DRAWN: F BENSON    DATE: 01/07/02    SCALE: NONE  
DWG. TITLE:  
REV PILOT SEAT SUB ASSEMBLY

BOAT MODEL  
17MTK  
INIT. REL. ECN NO:  
010976

MOLD NO.  
DWG. NO:  
09250

SHT. NO.  
3 OF 3

THIS DOCUMENT IS THE PROPERTY OF BOSTON WHALER, INC. MFG. DEPT., EDGEWATER, FLORIDA. ALL RIGHTS ARE RESERVED. THIS DOCUMENT AND INFORMATION CONTAINED MUST NOT BE COPIED OR DISCLOSED TO OTHERS WITHOUT WRITTEN PERMISSION OF BOSTON WHALER, INC.

DWG. NO: 10401 REV. J CURRENT ECD 0605104

NOTES:

- CONNECT CABLES IN ACCORDANCE w/MANUFACTURERS INSTALLATION SHEET.
- CABLES TO BE SECURED SEPARATELY FROM ELECTRICAL & FUEL LINES.
- ROUTE CABLES & SMALL HOSES IN A MANNER TO AVOID TWIST OR KINKING.
- MIN. BEND RADIUS FOR CONTROL CABLES IS 12".

REVISIONS					
REV.	DESCR.	BY	DATE	APPVD.	ECN NO.
B	2004 MODEL YEAR ENHANCEMENT	RC	05/22/03	RA	030338
C	Changed Numbering System/Apply Att.Border.	AVM	06/12/03	MG	030308
D	CHANGE PN# & DESCRIPTION ITEM 2, SHEET 1	SLJ	11/19/03	ZAC	030843
E	DELETE SPEEDO TUBING ITEM #7, SHEETS 1 & 2.	SL	05/06/04	ZAC	030625
F	ADD CAUTION NOTE SHEET 2, CHANGE NOTE #4 SHEET 1 TO 12" RAD. MIN.	SLJ	09/01/04	ME	040332
G	MYE '06: #2 P/N WAS 1757747	MRZ	05/06/05	-	050437
H	MYE '06: #3 P/N WAS 1032788	MRZ	05/26/05	-	050502
I	MODIFY DRAWING BORDER TO AN ATTRIBUTED BORDER	TS	04/10/06	AVM	060132
J	MYE '07: #2 WAS 1804040, DELETE #3	SWH	6/19/06		0605104

Parts List				
ITEM	QTY	U/M	DESCRIPTION	B.W.I. NO.
1	1	EA.	STEERING, CABLE NFB W/ENDS 14'	0704239
②	2	EA.	CABLE, CNTRL MERC GEN II PLAT 15'	1759686
③	1	EA.	HARNESS, ENG MERC S-CRFT 14 PIN 20'	1802105
4	15	FT.	CORD, NYLON 1/8" WHT	1033372
5	1	EA.	TAG, BW DO NOT PULL RIGGING	0999755
6	1	EA.	TIE, CABLE 11" MED NYLON BLK	0157321
⑦	22	FT.	TUBING, VINYL SPEEDO BLK	1043017

INTERPRET DIMENSIONS AND TOLERANCES PER ANSI Y 14.5 UNLESS OTHERWISE SPECIFIED DIMENSIONS ARE IN INCHES.  
 TOLERANCES: ANGLES = ± .5° .XXX = ± .010  
 .X = ± .1 .XX = ± .03 X = ± 1/16  
 DO NOT SCALE DRAWING



CHECKED: R. AVILA	DATE: 01/22/02	DRAWN: R CRAVEN	DATE: 01/21/02	SCALE: NONE	BOAT MODEL 17MTK	MOLD NO.
APPD: K. RANIERI	DATE: 01/22/02	DWG. TITLE: STEERING & THROTTLE CABLE INSTALLATION			INIT. REL. ECN NO: 010976	DWG. NO: 10401
DESIGN: L. SCHOLZ	DATE: 01/22/02				SHT. NO. 1 of 2	
INT. ENG: M. GATICA	DATE: 06/11/02					

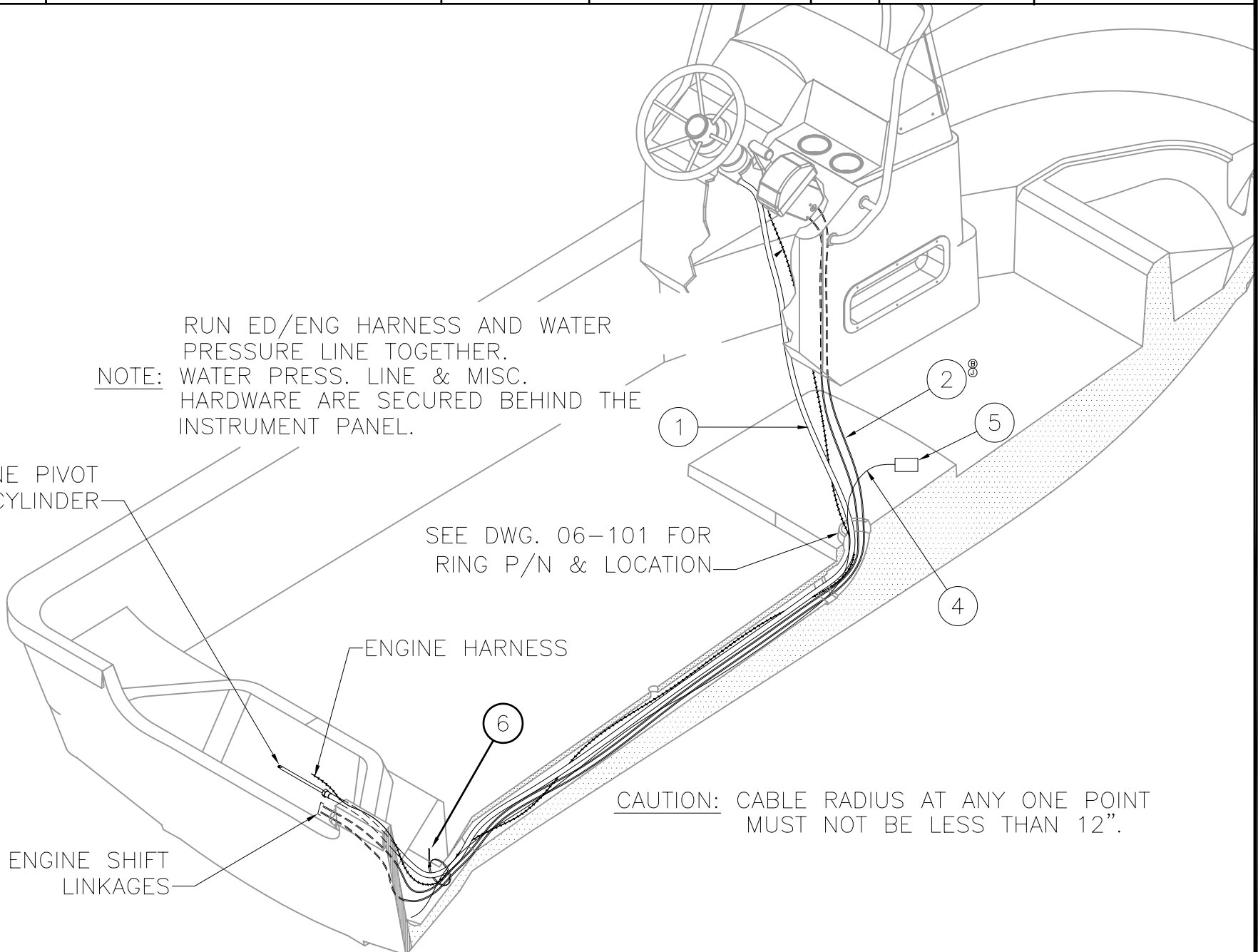
THIS DOCUMENT IS THE PROPERTY OF BOSTON WHALER, INC. MFG. DEPT., EDGEWATER, FLORIDA. ALL RIGHTS ARE RESERVED. THIS DOCUMENT AND INFORMATION CONTAINED MUST NOT BE COPIED OR DISCLOSED TO OTHERS WITHOUT WRITTEN PERMISSION OF BOSTON WHALER, INC.

DWG. NO:  
10401

REV.  
J

CURRENT ECD  
0605104

NOTES:



RUN ED/ENG HARNESS AND WATER PRESSURE LINE TOGETHER.  
NOTE: WATER PRESS. LINE & MISC. HARDWARE ARE SECURED BEHIND THE INSTRUMENT PANEL.

TO ENGINE PIVOT MOUNT CYLINDER

SEE DWG. 06-101 FOR RING P/N & LOCATION

ENGINE HARNESS

TO ENGINE SHIFT LINKAGES

CAUTION: CABLE RADIUS AT ANY ONE POINT MUST NOT BE LESS THAN 12".



INTERPRET DIMENSIONS AND TOLERANCES PER ANSI Y 14.5 UNLESS OTHERWISE SPECIFIED DIMENSIONS ARE IN INCHES.  
TOLERANCES: ANGLES = ± .5° .XXX = ± .010  
.X = ± .1 X = ± 1/16  
.XX = ± .03  
DO NOT SCALE DRAWING

DRAWN: R CRAVEN	DATE: 01/21/02	SCALE: NONE	BOAT MODEL 17MTK	MOLD NO.
DWG. TITLE: STEERING & THROTTLE CABLE INSTALLATION			INIT. REL. ECN NO: 010976	DWG. NO: 10401
				SHT. NO. 2 OF 2