

THIS DOCUMENT IS THE PROPERTY OF BOSTON WHALER, INC. MFG. DEPT., EDGEWATER, FLORIDA. ALL RIGHTS ARE RESERVED. THIS DOCUMENT AND INFORMATION CONTAINED MUST NOT BE COPIED OR DISCLOSED TO OTHERS WITHOUT WRITTEN PERMISSION OF BOSTON WHALER, INC.

DWG. NO:
09402

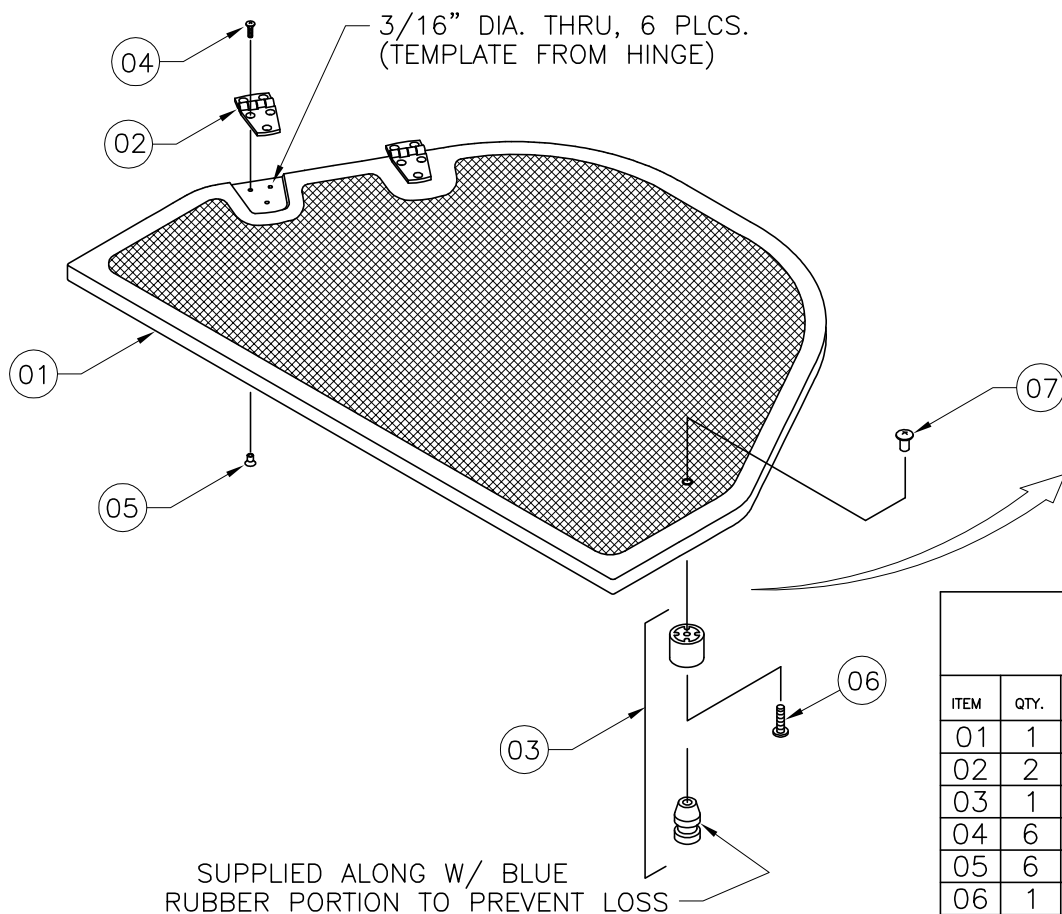
REV.
D

CURRENT ECD
060130

NOTES:

1. PREPARE PART AS INDICATED PRIOR TO COMPONENT ASSEMBLY.
2. APPLY & SMOOTH WHITE SILICONE AT BBL NUT HEADS AFTER INSTALL'N.

REVISIONS					
REV.	DESCR.	BY	DATE	APPVD.	ECN NO.
A	ITEM 8, (1035666) DELETED	HJR	05/09/02	RA	011003
B	CHANGED NUMBERING SYSTEM/ APPLY ATT BORDER	AVM	03/10/03	ZAC	030302
C	UPDATED DIMS. WAS 2.375	JM	08/11/04	ME	040812
D	MODIFY DRAWING BORDER TO AN ATTRIBUTED BORDER	TS	01/23/06	AVM	060130



PARTS LIST				
ITEM	QTY.	U/M	DESCRIPTION	B.W.I. NO.
01	1	EA	FIBERGLASS PART, ANCHOR LKR COVER	22K08600
02	2	EA	HINGE, DOOR SS 1.5" x 3.00"	1617323
03	1	EA	STOP, DOOR HOLDER RBR BLUE	1142348
04	6	EA	SCREW, MACHINE #10-24 x 5/8" POH	1010545
05	6	EA	NUT, BBL #10-24 x 3/8" FH	1040187
06	1	EA	SCREW, MACHINE #10-24 x 3/4" PTH SC	1008705
07	1	EA	NUT, BBL #10-24 X 3/8" TH CHR/BR	1040211

INTERPRET DIMENSIONS AND TOLERANCES PER ANSI Y 14.5
UNLESS OTHERWISE SPECIFIED DIMENSIONS ARE IN INCHES.
TOLERANCES: ANGLES = ± .5° .XXX = ± .010
.X = ± .1 .XX = ± .03 X = ± 1/16
DO NOT SCALE DRAWING



CHECKED: RA	DATE: 5/8/02	DRAWN: R DURHAM	DATE: 05/06/02	SCALE: NONE	BOAT MODEL 150SP	MOLD NO.
APPD: KR	DATE: 5/8/02	DWG. TITLE: ANCHOR LOCKER COVER			INIT. REL. ECN NO: 011003	DWG. NO: 09402
DESIGN: L. SCHOLZ	DATE: 5/8/02				SHT. NO. 1 OF 1	
INT. ENG:	DATE:					

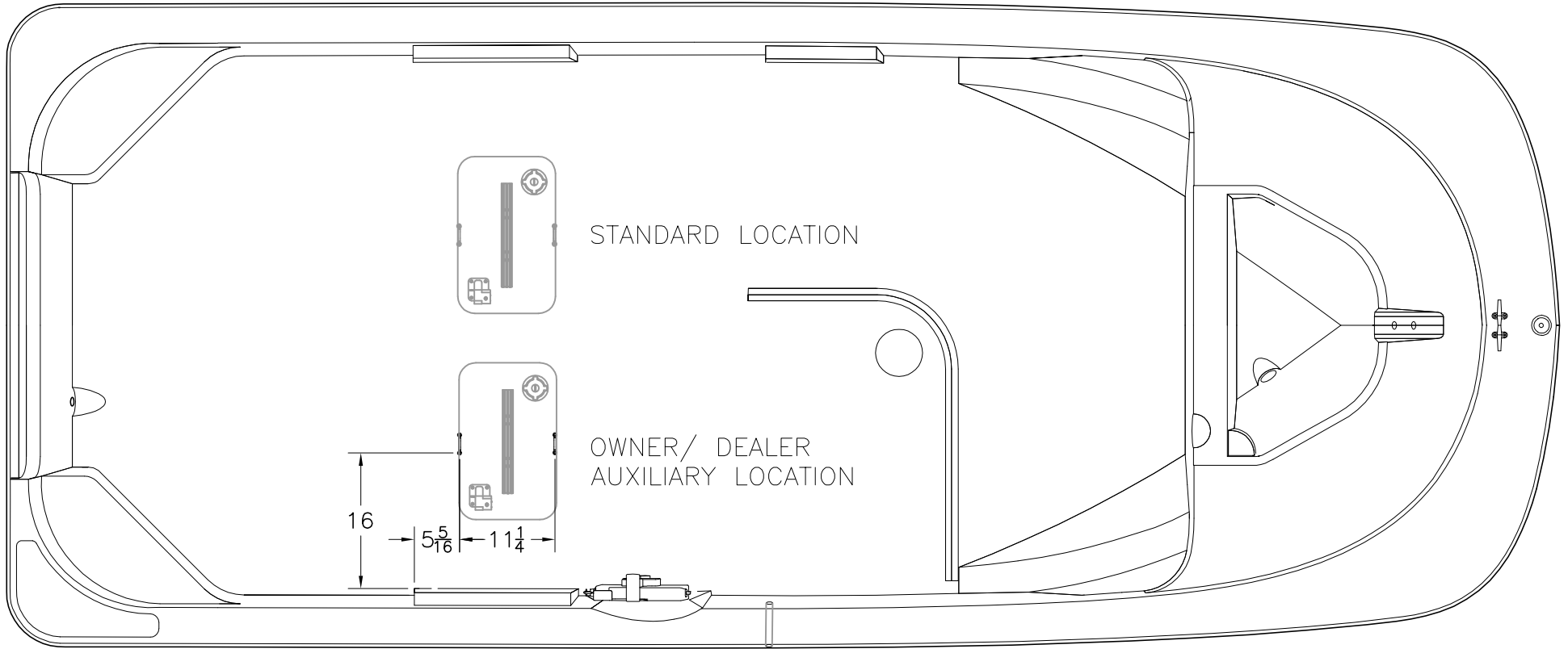
THIS DOCUMENT IS THE PROPERTY OF BOSTON WHALER, INC. MFG. DEPT., EDGEWATER, FLORIDA. ALL RIGHTS ARE RESERVED. THIS DOCUMENT AND INFORMATION CONTAINED MUST NOT BE COPIED OR DISCLOSED TO OTHERS WITHOUT WRITTEN PERMISSION OF BOSTON WHALER, INC.

DWG. NO: 10510 REV. B CURRENT ECD 060130

NOTES:

- REFER TO DWG. 10-501 FOR COMPLETE INSTRUCTIONS AND PARTS LIST.

REVISIONS					
REV.	DESCR.	BY	DATE	APPVD.	ECN NO.
A	CHANGED NUMBERING SYSTEM/ APPLY ATT BORDER	AVM	06/12/03	-	030302
B	MODIFY DRAWING BORDER TO AN ATTRIBUTED BORDER	TS	01/23/06	AVM	060130



INTERPRET DIMENSIONS AND TOLERANCES PER ANSI Y 14.5 UNLESS OTHERWISE SPECIFIED DIMENSIONS ARE IN INCHES.
 TOLERANCES: ANGLES = ± .5° .XXX = ± .010
 .X = ± .1 X/X = ± 1/16
 .XX = ± .03
 DO NOT SCALE DRAWING



CHECKED:	DATE:	DRAWN: H READ	DATE: 05/23/03	SCALE: NONE	BOAT MODEL 150SP	MOLD NO.
APPD:	DATE:	DWG. TITLE: AUXILIARY FUEL TANK LOCATION			INIT. REL. ECN NO: 030336	DWG. NO: 10510
DESIGN:	DATE:				SHT. NO. 1 of 1	
INT. ENG:	DATE:					

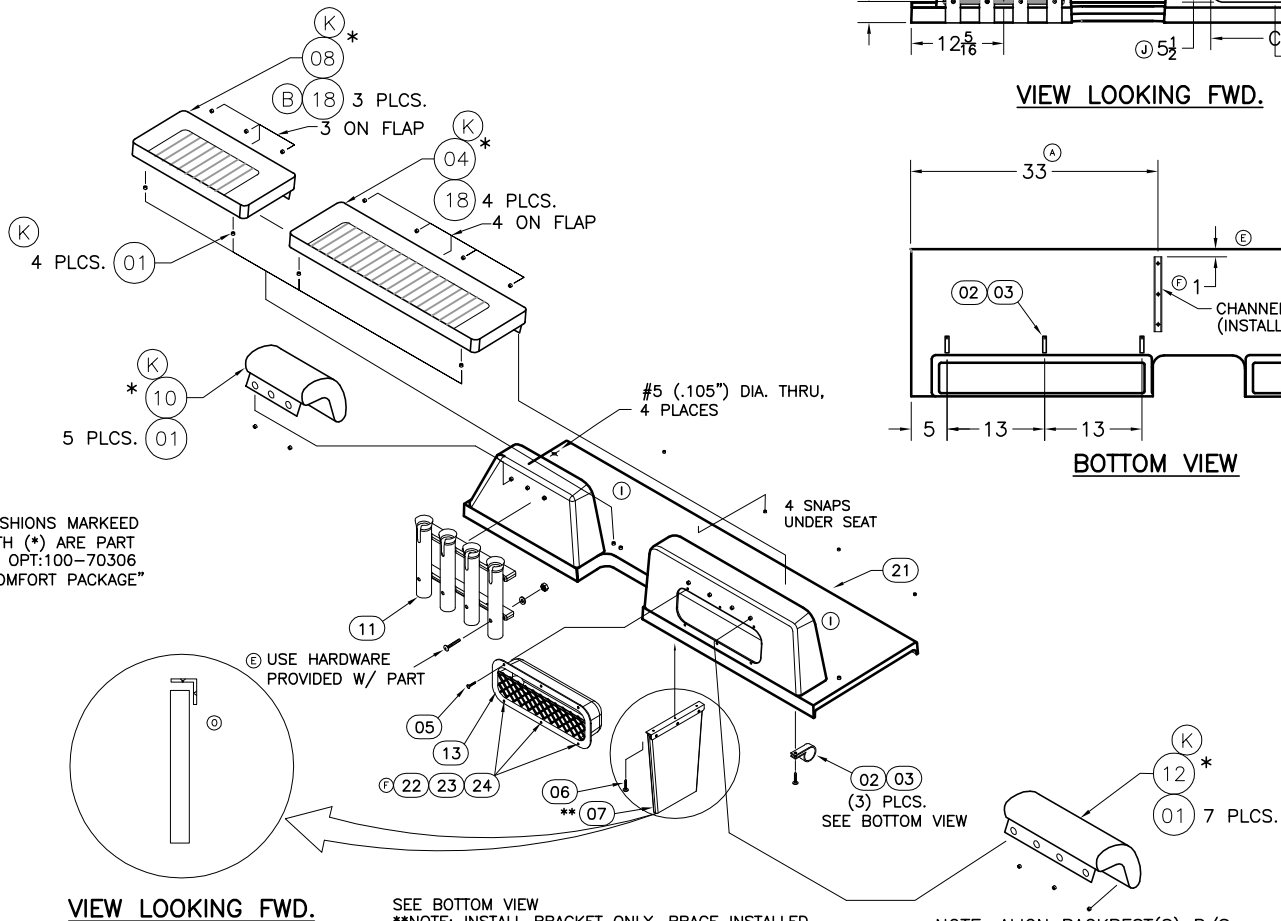
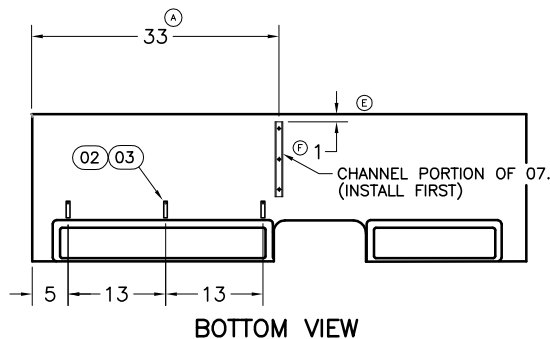
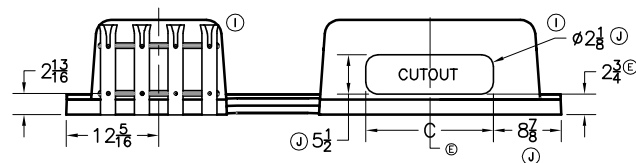
THIS DOCUMENT IS THE PROPERTY OF BOSTON WHALER, INC. MFG. DEPT., EDGEWATER, FLORIDA. ALL RIGHTS ARE RESERVED. THIS DOCUMENT AND INFORMATION CONTAINED MUST NOT BE COPIED OR DISCLOSED TO OTHERS WITHOUT WRITTEN PERMISSION OF BOSTON WHALER, INC.

DWG. NO: 09425
 REV. 0
 CURRENT ECD 060829

NOTES:

- REFER TO DWG. 22-K101-00 AND 22-K102-00 FOR TRIM & GRIND INFO.
- ALL COMPONENTS & FASTENER MOUNTINGS SHALL BE SEALED USING WHITE SILICONE CAULK AT TIME OF INSTALLATION.

REVISIONS					
REV.	DESCR.	BY	DATE	APPVD.	ECN NO.
L	UPDATED SLAM LATCH, #17 WAS 1411453, ADDED #25,#22 WAS 5	MRZ	05/16/05	DJW	060540
M	DELETED BENCH SEAT SECURING SCREW HOLES	SLZ	10/20/05	ME	050366
N	MODIFY DRAWING BORDER TO AN ATTRIBUTED BORDER	TS	01/23/06	AVM	060130
O	CHANGED SUPPORT BRACKET FROM "U" TO 1" ANGLE, SHEET 1	SLJ	08/09/06	AVM	060829



CUSHIONS MARKEED WITH (*) ARE PART OF OPT:100-70306 "COMFORT PACKAGE"

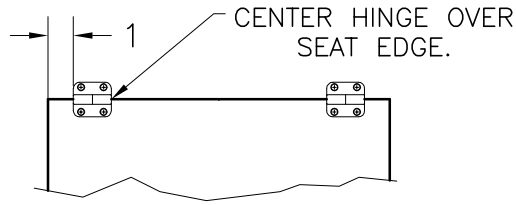
SEE BOTTOM VIEW
 **NOTE: INSTALL BRACKET ONLY. BRACE INSTALLED AFTER AFT BENCH (DWG. 06-101)

NOTE: ALIGN BACKREST(S) P/S WITH CHANNELING IN SEAT CUSHION.

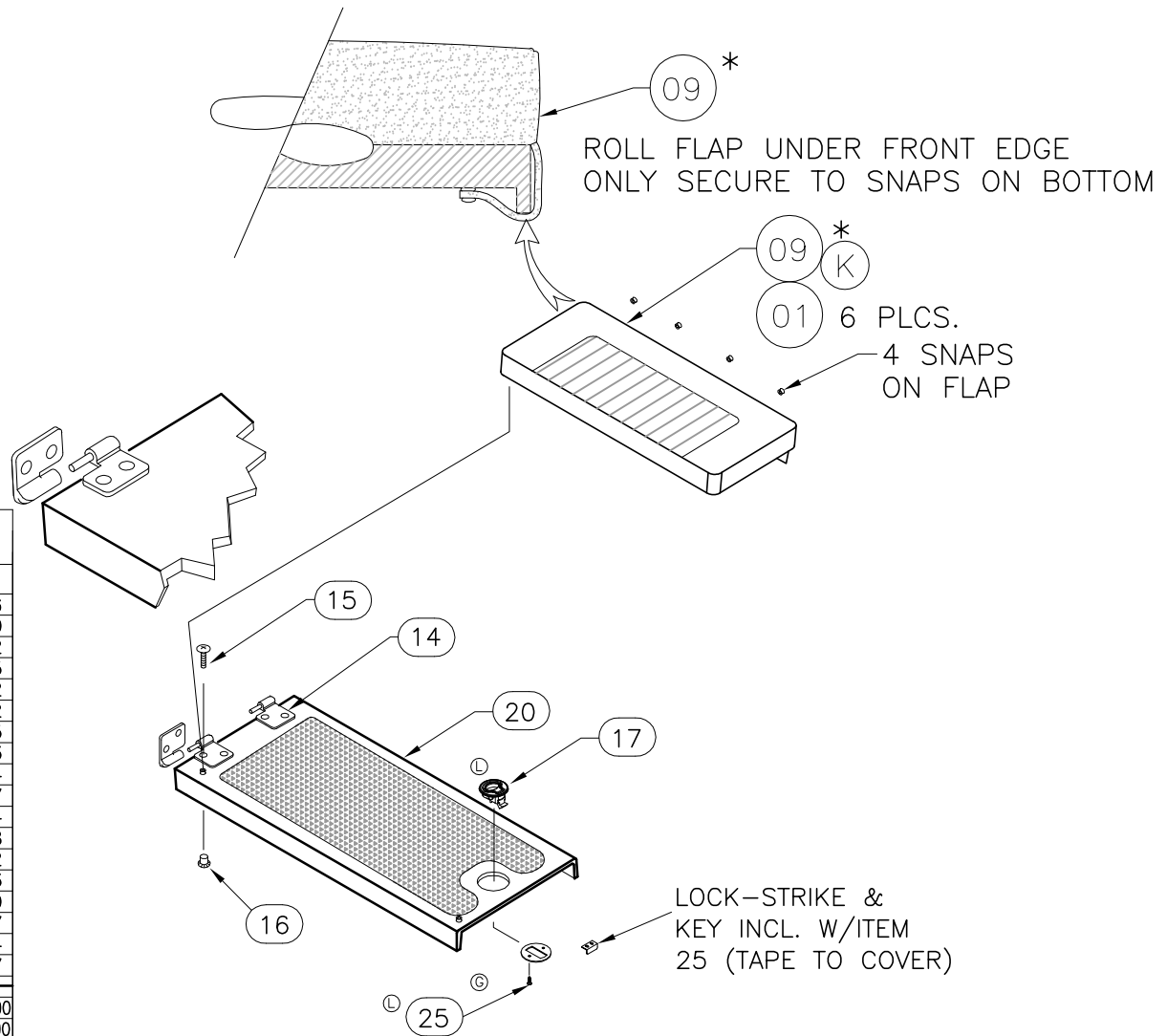
INTERPRET DIMENSIONS AND TOLERANCES PER ANSI Y 14.5 UNLESS OTHERWISE SPECIFIED DIMENSIONS ARE IN INCHES.
 TOLERANCES: ANGLES = ± .5° .XXX = ± .010
 .X = ± .1 X = ± 1/16
 .XX = ± .03 X = ± 1/16
 DO NOT SCALE DRAWING



CHECKED: R. AVILA	DATE: 3/25/02	DRAWN: R. DURHAM	DATE: 03/18/02	SCALE: NONE	BOAT MODEL 150SP	MOLD NO.
APPD: K. RANIERI	DATE: 3/25/02	DWG. TITLE: BENCH SEAT SUB-ASSY			INIT. REL. ECN NO: 011003	DWG. NO: 09425
DESIGN: L. SCHOLZ	DATE: 3/26/02					SHT. NO. 1 OF 2
INT. ENG: M. GATICA	DATE: 5/14/02					



HINGE PLACEMENT DETAIL



PARTS LIST

ITEM	QTY.	U/M	DESCRIPTION	B.W.I. NO.
(K) 1	22	EA.	SNAP STUD, W/#8 x 3/8" PH BR/NI/SS	0203786
2	3	EA.	CLIP, SUPPORT 1" DIA	1216720
3	3	EA.	SCREW, TAPPING #10A x 3/4" PTH SC	1008762
(K) 4	1	EA.	CUSH, BW150SP-05 BNCHST STB	1781375
(F) 5	3	EA.	SCREW, TAPPING #8A x 1/2" PTH SC	1008812
6	3	EA.	SCREW, TAPPING #10A x 3/4" POH SC	1010552
7	1	EA.	SUPPORT, HDPE BW150-02 SEAT SEAFOAM	1691285
(K) 8	1	EA.	CUSH, BW150SP-05 BNCHST PRT	1781373
(K) 9	1	EA.	CUSH, BW150SP-05 BNCHST PRT FWD	1781374
(K) 10	1	EA.	CUSH, BW130/150SP-05 BNCHST B/R PRT	1781367
11	1	EA.	ROD HOLDER, BW150SP-02 4-ROD ASSY WHT	1691124
(K) 12	1	EA.	CUSH, BW130/150SP-05 BNCHST B/R STB	1781368
13	1	EA.	POCKET, ABS BW150-02 STRG BNCHST	1691092
(EA) 14	1	PR.	HINGE, TAKE APART 316 SS LH	1727763
(F) 15	4	EA.	SCREW, MACHINE #10-24 X 3/4" POH SC	1008440
16	4	EA.	NUT, BBL #10-24 x 3/8" FH	1040187
(L) 17	1	EA.	LATCH, FLUSH MNT N/LOCKING SLAM SS	1781434
(K) 18	7	EA.	SNAP STUD, 1/8" X 1/2" ALUM	1040237
(E) 19	4	EA.	WASHER, FLAT #10 SC	1260751
20	1	EA.	FIBERGLASS PART, BENCH SEAT FWD	22-K101-00
21	1	EA.	FIBERGLASS PART, BENCH SEAT HELM	22-K102-00
(L)(D) 22	3	EA.	SCREW, MACHINE #8-32 x 3/4" PTH SC	1010735
(F) 23	3	EA.	NUT, WING #8-32 NYLON	1103530
(F) 24	3	EA.	WASHER, FLAT #8 SC	1326297
(L) 25	1	EA.	PLATE, FLAT BRKT 2"SHORT SCREW W/HDWR PKG.	1781436

THIS DOCUMENT IS THE PROPERTY OF BOSTON WHALER, INC. MFG. DEPT., EDGEWATER, FLORIDA. ALL RIGHTS ARE RESERVED. THIS DOCUMENT AND INFORMATION CONTAINED MUST NOT BE COPIED OR DISCLOSED TO OTHERS WITHOUT WRITTEN PERMISSION OF BOSTON WHALER, INC.

DWG. NO:
09201

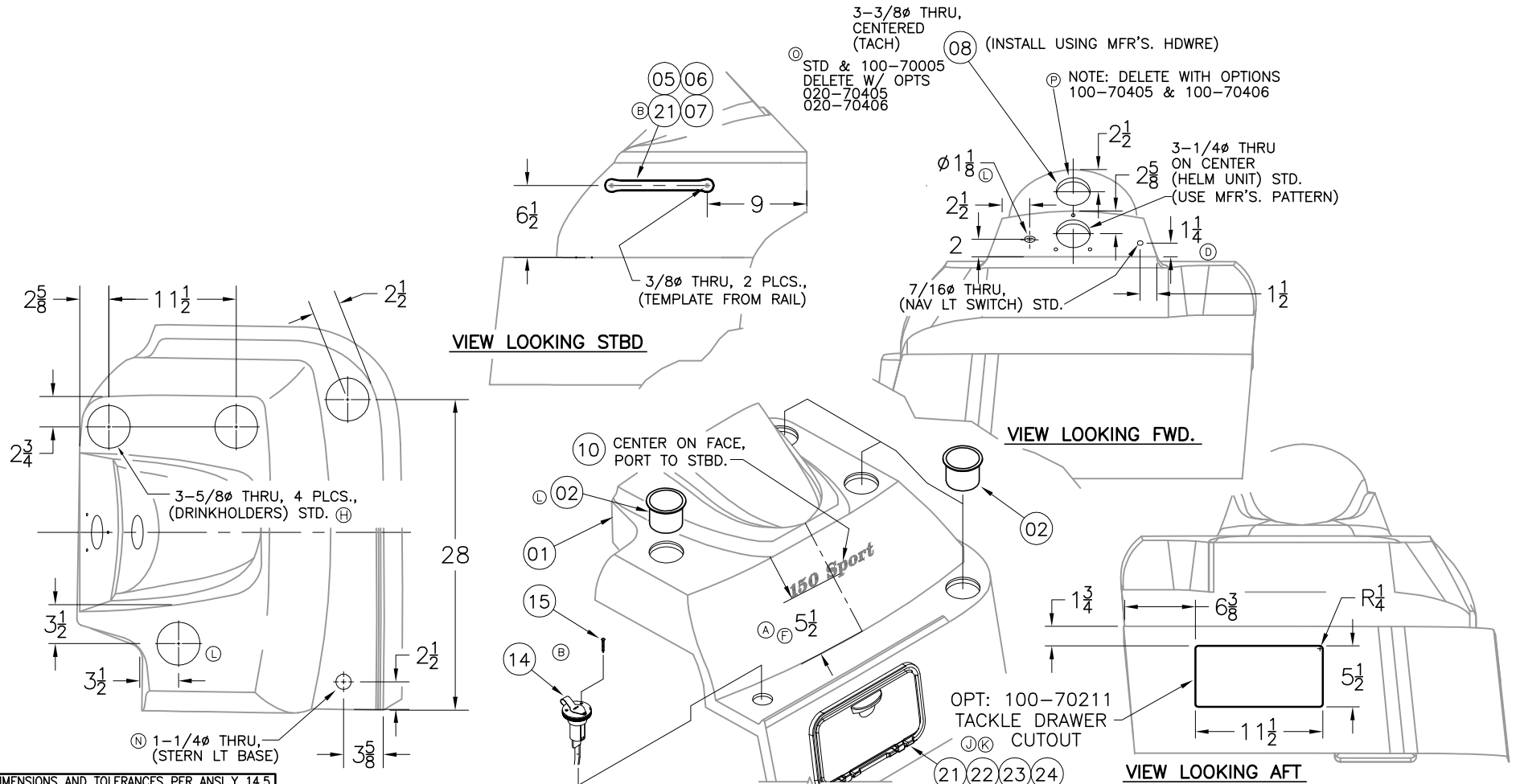
REV.
P

CURRENT ECD
0609020

NOTES:

1. REFER TO DWG. 22-K100-00 FOR ALL TRIM & GRIND INFO.
2. ALL COMPONENTS & FASTENERS SHALL BE SEALED AT TIME OF INSTALLATION USING WHITE SILICONE CAULK.
3. CLEAN GEL COAT SURFACE USING DENATURED ALCOHOL PRIOR TO DECAL INSTALLATION.
4. REFER TO DWG. 10-401 FOR STEERING SYSTEM INSTALL'N.

REVISIONS					
REV.	DESCR.	BY	DATE	APPVD.	ECN NO.
K	CHANGED PN# & DESCRIPTION ITEM 21, SHEETS 1 & 2, WAS 1761591	SLJ	11/24/04	ME	041037
L	ADD 12V OUTLET #25, & DRINK HOLDER #2 WAS QTY 3	HJR	05/05/05	MG	050421
M	MODIFY DRAWING BORDER TO AN ATTRIBUTED BORDER	TS	01/23/06	AVM	060130
N	CHANGED NAV. LIGHT HOLE DIA. FROM 1-3/8" TO 1-1/4".	JC	02/20/06	ME	060154
O	ADDED STD & OPT #'S TO TACH CUTOUT, SHEET 1	SLJ	08/25/06	AVM	0606167
P	ADD "DELETE WITH OPTION" NOTE TO TACH, SHEET 1	SLJ	09/13/06	AVM	0609020



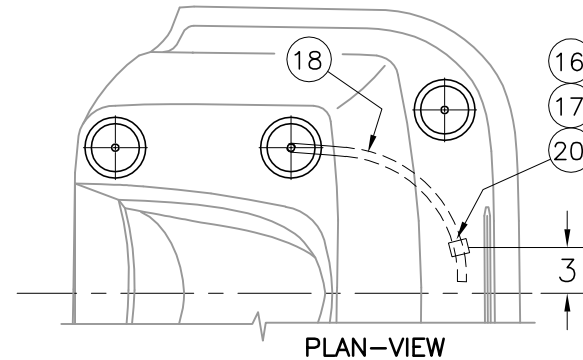
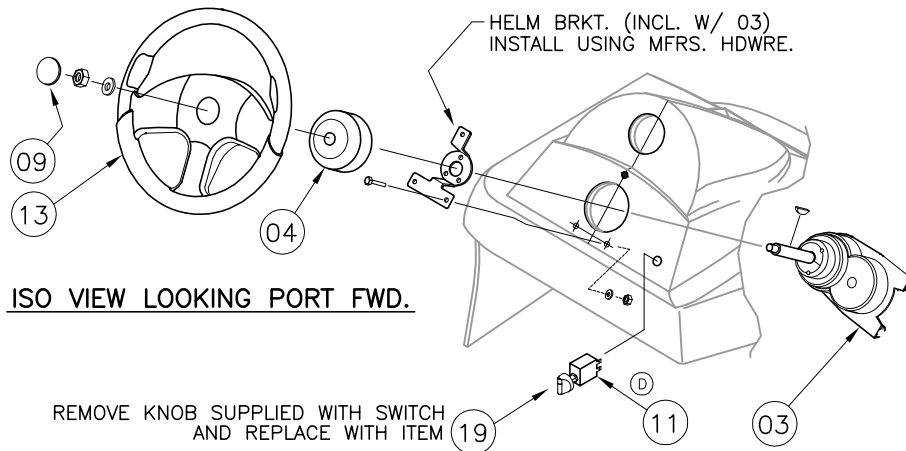
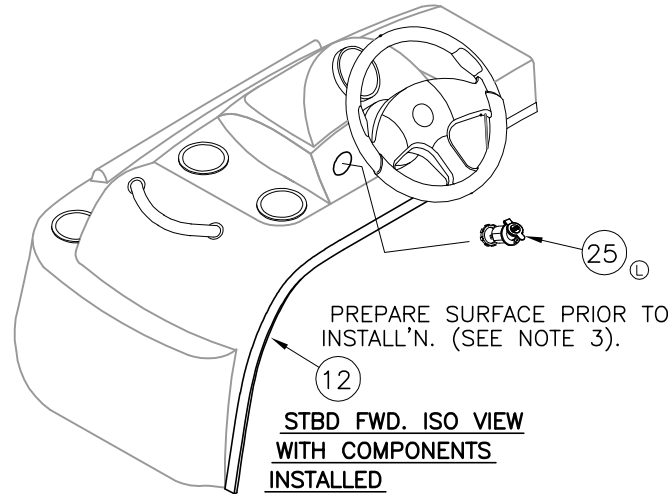
INTERPRET DIMENSIONS AND TOLERANCES PER ANSI Y 14.5 UNLESS OTHERWISE SPECIFIED DIMENSIONS ARE IN INCHES.
 TOLERANCES: ANGLES = $\pm .5^\circ$.XXX = $\pm .010$
 .X = $\pm .1$ X = $\pm 1/16$
 .XX = $\pm .03$ X = $\pm 1/16$
 DO NOT SCALE DRAWING



CHECKED: R. AVILA	DATE: 04/08/02	DRAWN: R DURHAM	DATE: 08/14/00	SCALE: NONE	BOAT MODEL	MOLD NO.
APPD: K. RANIERI	DATE: 04/08/02	DWG. TITLE:			150SP	
DESIGN: L. SCHOLZ	DATE: 04/24/02	CONSOLE SUB ASSEMBLY			INIT. REL. ECN NO:	DWG. NO:
INT. ENG: M. GATICA	DATE: 04/15/02				011003	09201
					SHT. NO.	
					1	OF 2

PARTS LIST

ITEM	QTY.	U/M	DESCRIPTION	B.W.I. NO.
	01	EA.	FIBERGLASS PART, 150SP-02 CONSOLE	22-K100-00
Ⓚ	02	EA.	DRINKHOLDR, PLAS W/DRAIN DEEP XLG SZ BLK	1727419
	03	EA.	STEERING, HELM NFB SGL	0626143
	04	EA.	STEERING, BEZEL 90DEG NFB SGL	0626150
	05	EA.	RAIL, GRAB BAJA 8 5/8" SS W/STUD	1630342
	06	EA.	WASHER, FLAT #5/16" SC	1260785
Ⓜ	07	EA.	NUT, HEX #5/16-18 SC	1009687
	08	EA.	GAUGE, TACH MERC FLAGSHIP	1032820
	09	EA.	EMBLEM, BW130SP-00 STEERING WHL CAP	1367572
Ⓝ	10	EA.	DECAL, BW-04 150SP GRY (DRIP MOLD)	1753497
	11	EA.	SWITCH, ROTARY 3-POS ANCH-OFF-NAV	1719020
	12	FT.	MOLDING, VINYL "L" OFF-WHT W/ADH	1020924
	13	EA.	STEERING WHEEL, MODEL 103 BLK	1261346
	14	EA.	LIGHT, NAV STERN BASE RND CHR	0331751
	15	EA.	SCREW, TAPPING #6A x 3/4" POH SC	1008564
Ⓞ	16	EA.	TIE, CLIP BLK	1031764
Ⓞ	17	EA.	TIE, CABLE 6" LG NYLON BLK	0999672
Ⓞ	18	FT.	HOSE, PVC CLEAR DRAIN 7/16"	1041490
Ⓞ	19	EA.	KNOB, ROTARY SW NAV BLK/BLK	1733593
Ⓞ	20	EA.	SCREW, TAPPING #8A x 5/8" PTH SC	1010925
ⓀⓃ	21	EA.	BOX, PLAS BW150SP 05 TACKLE 2-DRWR WHT	1794778
Ⓝ	22	EA.	SCREW, MACHINE #10-24 X 3/4" PTH SC	1008705
Ⓝ	23	EA.	NUT, HEX NYLON LOCK #10-24 SC	1007772
Ⓝ	24	EA.	WASHER, FLAT #10 SC	1260751
Ⓚ	25	EA.	RECEPTACLE, FEMALE 12V LONG THRD BLK	1287283



THIS DOCUMENT IS THE PROPERTY OF BOSTON WHALER, INC. MFG. DEPT., EDGEWATER, FLORIDA. ALL RIGHTS ARE RESERVED. THIS DOCUMENT AND INFORMATION CONTAINED MUST NOT BE COPIED OR DISCLOSED TO OTHERS WITHOUT WRITTEN PERMISSION OF BOSTON WHALER, INC.

DWG. NO:

10201

REV.

K

CURRENT ECD

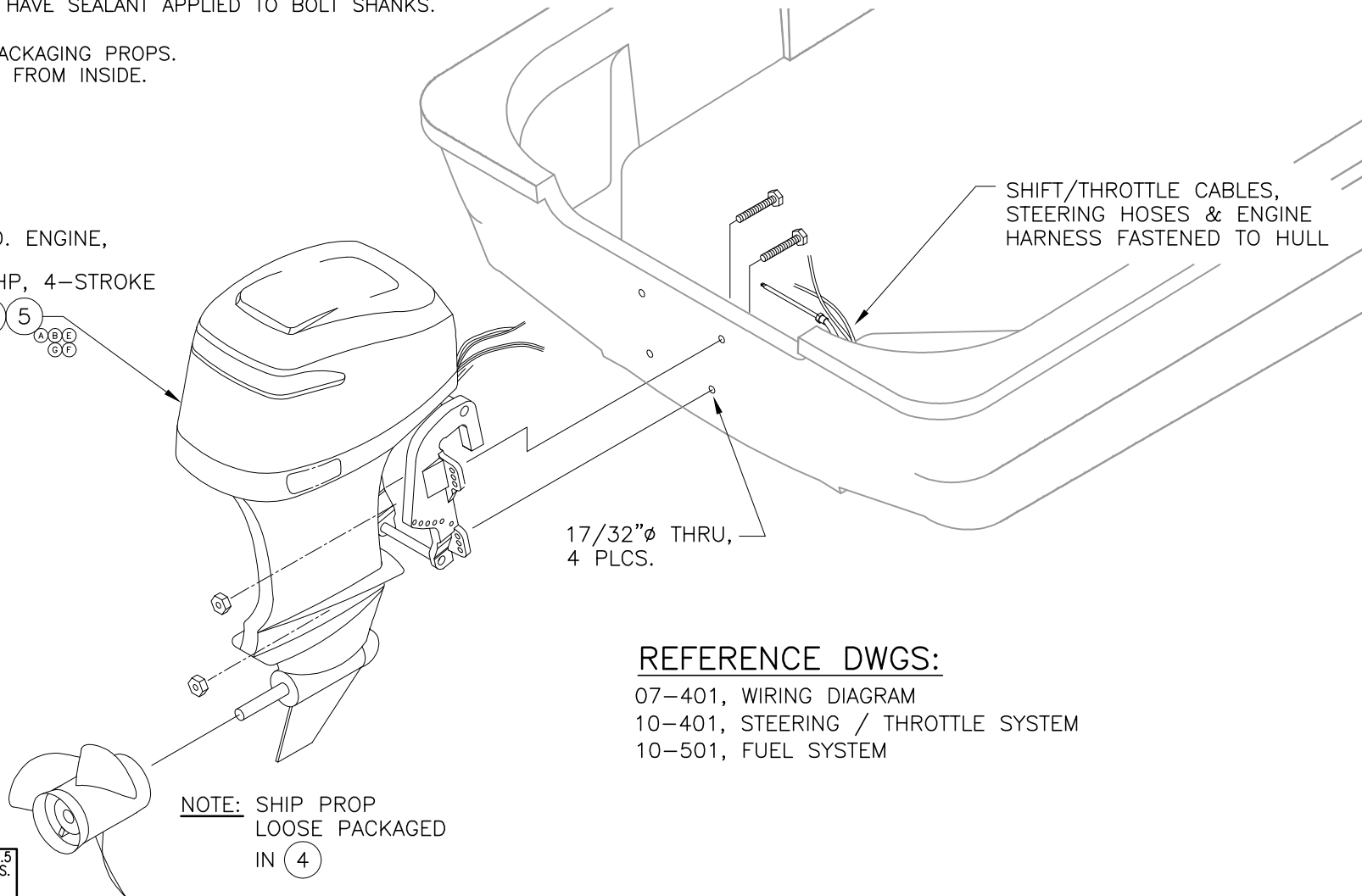
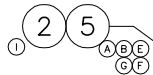
06103687

NOTES:

1. USE MERCURY INSTRUCTIONS & RIGGING TEMPLATE FOR HOLE LAYOUT AND INSTALLATION.
3. HARDWARE INCLUDED w/ENGINE.
4. MARK CENTERLINE OF TRANSOM FOR ALIGNING RIGGING TEMPLATE.
5. HOLES TO BE DRILLED PERPENDICULAR TO TRANSOM.
6. ALL TRANSOM FASTENERS TO HAVE SEALANT APPLIED TO BOLT SHANKS. & TORQUE TO 55lb. ft.
7. ITEM #4 TO BE USED FOR PACKAGING PROPS.
8. ALL ENGINE BOLTS INSTALLED FROM INSIDE.

REVISIONS					
REV.	DESCR.	BY	DATE	APPVD.	ECN NO.
H	MODIFY DRAWING BORDER TO AN ATTRIBUTED BORDER	TS	01/23/06	AVM	060130
I	MYE '07: ITEM #2 WAS 1753186	AT	04/11/06	MG	060412
J	CHANGED #2, WAS 1830984	DW	09/29/06	AVM	06093667
K	ADD TORQUE SPECIFICATION 55lb. ft. TO NOTES.	JC	10/06/06	AVM	06103687

STD. ENGINE,
60HP, 4-STROKE



REFERENCE DWGS:

- 07-401, WIRING DIAGRAM
- 10-401, STEERING / THROTTLE SYSTEM
- 10-501, FUEL SYSTEM

NOTE: SHIP PROP
LOOSE PACKAGED
IN (4)

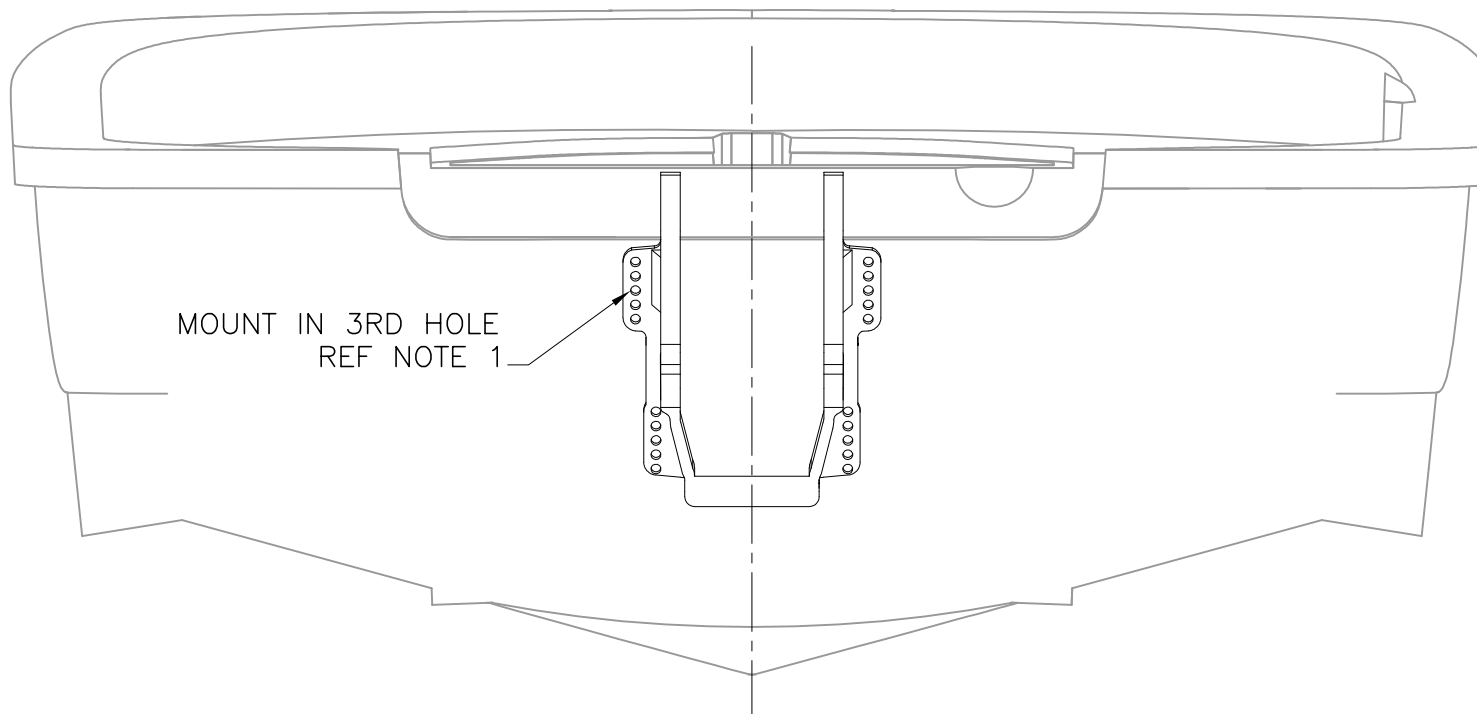
INTERPRET DIMENSIONS AND TOLERANCES PER ANSI Y 14.5 UNLESS OTHERWISE SPECIFIED DIMENSIONS ARE IN INCHES.
TOLERANCES: ANGLES = ± .5° .XXX = ± .010
.X = ± .1 .XX = ± .03 X = ± 1/16
DO NOT SCALE DRAWING



CHECKED: R. AVILA	DATE: 4/30/02	DRAWN: R. CRAVEN	DATE: 03/11/02	SCALE: NONE	BOAT MODEL	MOLD NO.
APPD: K. RANIERI	DATE: 4/30/02	DWG. TITLE:			150SP	
DESIGN: L. SCHOLZ	DATE: 4/30/02	ENGINE INSTALLATION			INIT. REL. ECN NO:	DWG. NO:
INT. ENG: M. GATICA	DATE: 5/14/02				011003	10201
					SHT. NO.	
					1	OF 2

PARTS LIST

ITEM	QTY		U/M	DESCRIPTION	B.W.I. NO.
	STD.	OPT.			
(C) 1	1		EA.	O/B, MERC 60HP ELPTO 20" SHAFT SW	1753083
(J)(I)(C) 2	1		EA.	O/B, MERC 60 ELPT BF 4-STK EFI 20" DESMO	1881333
3	1		EA.	PROP, 10 3/8" X 13" ALUM BLK MAX	1076355
4	1		EA.	BAG, POLY 33" x 40" x 33 GAL HVY CLR	1143163
(F)(E)(B)(A) 5	1		EA.	PROP, 13 3/8" X 14" SST RH SPECIAL HUB	1776455

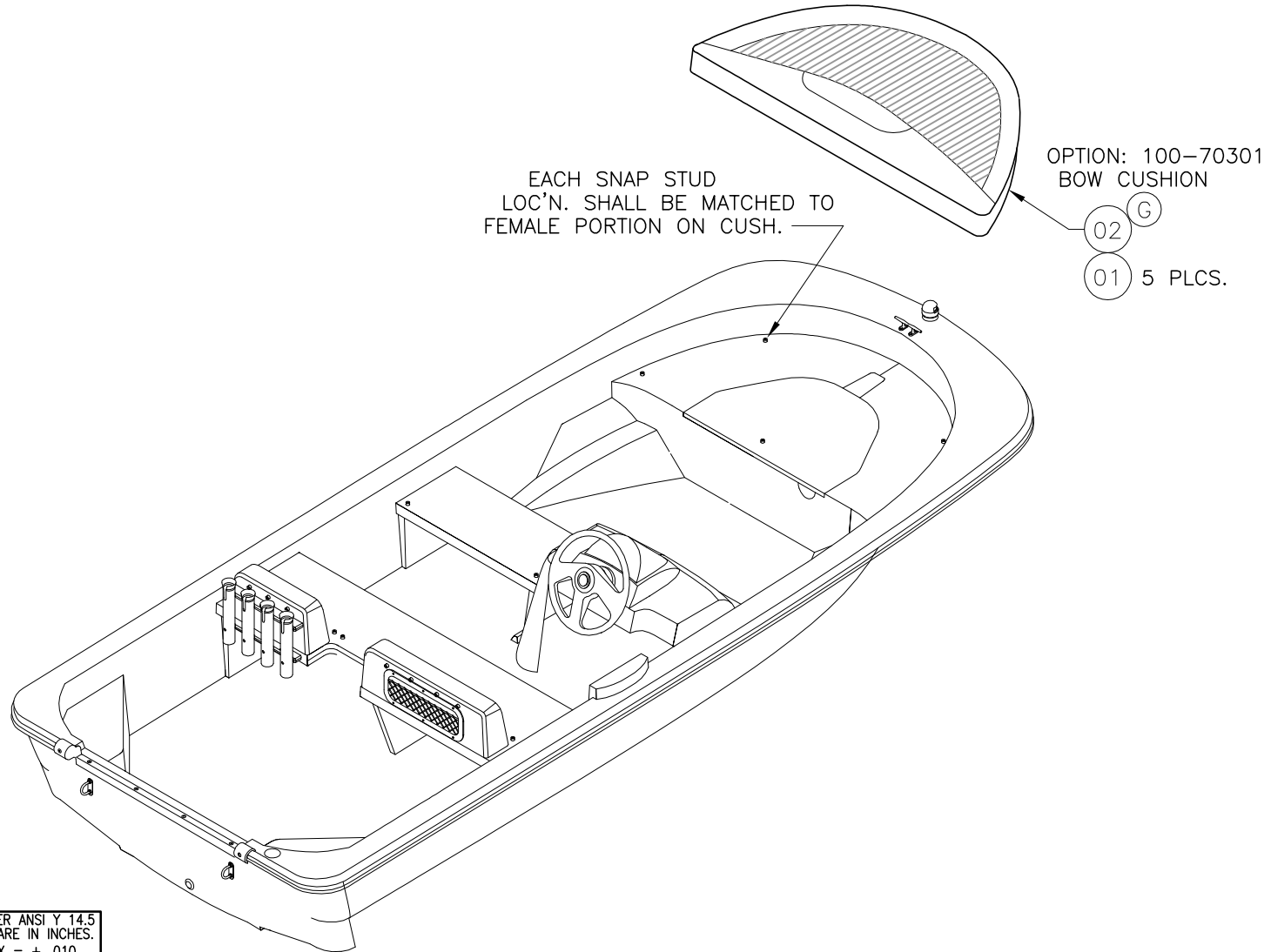


THIS DOCUMENT IS THE PROPERTY OF BOSTON WHALER, INC. MFG. DEPT., EDGEWATER, FLORIDA. ALL RIGHTS ARE RESERVED. THIS DOCUMENT AND INFORMATION CONTAINED MUST NOT BE COPIED OR DISCLOSED TO OTHERS WITHOUT WRITTEN PERMISSION OF BOSTON WHALER, INC.

DWG. NO: 11201	REV. J	CURRENT ECD 060130
--------------------------	------------------	------------------------------

NOTES:

REVISIONS					
REV.	DESCR.	BY	DATE	APPVD.	ECN NO.
J	MODIFY DRAWING BORDER TO AN ATTRIBUTED BORDER	TS	01/23/06	AVM	060130



INTERPRET DIMENSIONS AND TOLERANCES PER ANSI Y 14.5 UNLESS OTHERWISE SPECIFIED DIMENSIONS ARE IN INCHES.
 TOLERANCES: ANGLES = ± .5° .XXX = ± .010
 .X = ± .1 X = ± 1/16
 .XX = ± .03 X

DO NOT SCALE DRAWING

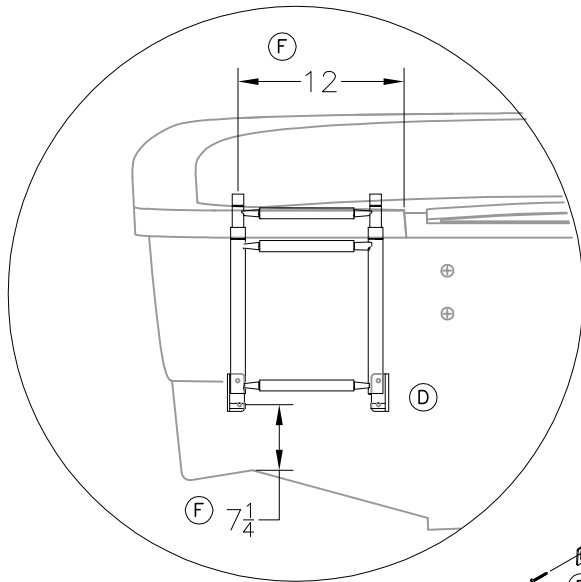


CHECKED: R. AVILA	DATE: 04/04/02	DRAWN: HREAD	DATE: 03/28/02	SCALE: NONE	BOAT MODEL 150SP	MOLD NO.
APPD: K. RANIERI	DATE: 04/04/02	DWG. TITLE: FINAL ASSEMBLY			INIT. REL. ECN NO: 011003	DWG. NO: 11201
DESIGN: L. SCHOLZ	DATE: 04/18/02					SHT. NO. 1 OF 2
INT. ENG: M. GATICA	DATE: 05/14/02					

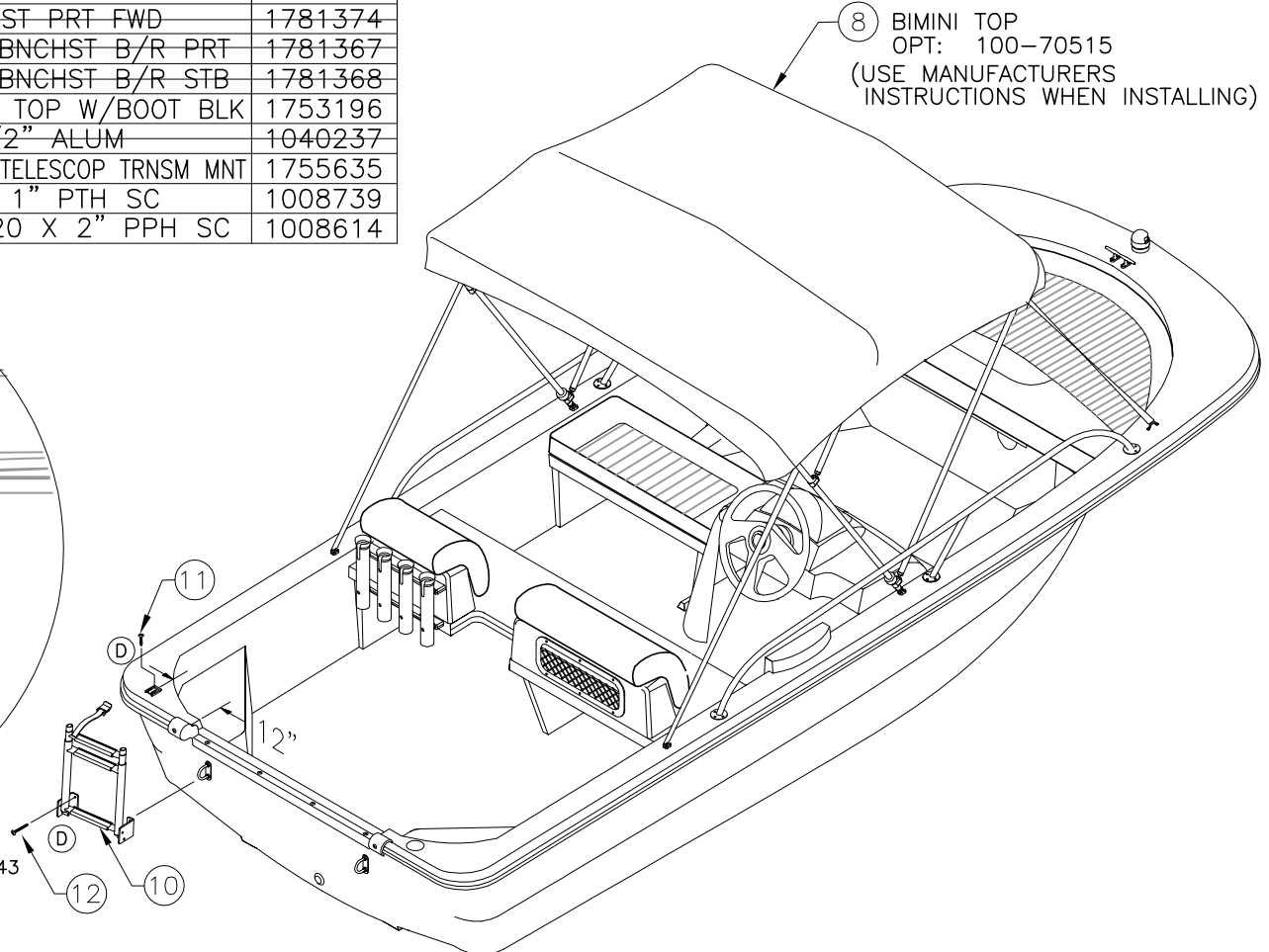
PARTS LIST

ITEM	QTY.	U/M	DESCRIPTION	B.W.I. NO.
①B	1	5 EA.	SNAP STUD, W/#8 x 3/8" PH BR/NI/SS	0203786
②C	1	EA.	CUSH, BW150SP-05 BOW	1781376
③G	1	EA.	CUSH, BW150SP-05 BNCHST STB	1781375
④G	1	EA.	CUSH, BW150SP-05 BNCHST PRT	1781373
⑤G	1	EA.	CUSH, BW150SP-05 BNCHST PRT FWD	1781374
⑥G	1	EA.	CUSH, BW130/150SP-05 BNCHST B/R PRT	1781367
⑦G	1	EA.	CUSH, BW130/150SP-05 BNCHST B/R STB	1781368
⑧D	1	EA.	CANVAS, BW150SP-04 BIM TOP W/BOOT BLK	1753196
⑨I	7	EA.	SNAP STUD, 1/8" X 1/2" ALUM	1040237
⑩D	1	EA.	LADDER, BW-04 SWIM 3-STEP TELESCOP TRNSM MNT	1755635
⑪D	2	EA.	SCREW, TAPPING #10A X 1" PTH SC	1008739
⑫D	4	EA.	SCREW, MACHINE #1/4-20 X 2" PPH SC	1008614

⑧ BIMINI TOP
OPT: 100-70515
(USE MANUFACTURERS
INSTRUCTIONS WHEN INSTALLING)



OPT: 100-70343
SWIM LADDER



THIS DOCUMENT IS THE PROPERTY OF BOSTON WHALER, INC. MFG. DEPT., EDGEWATER, FLORIDA. ALL RIGHTS ARE RESERVED. THIS DOCUMENT AND INFORMATION CONTAINED MUST NOT BE COPIED OR DISCLOSED TO OTHERS WITHOUT WRITTEN PERMISSION OF BOSTON WHALER, INC.

DWG. NO:
10501

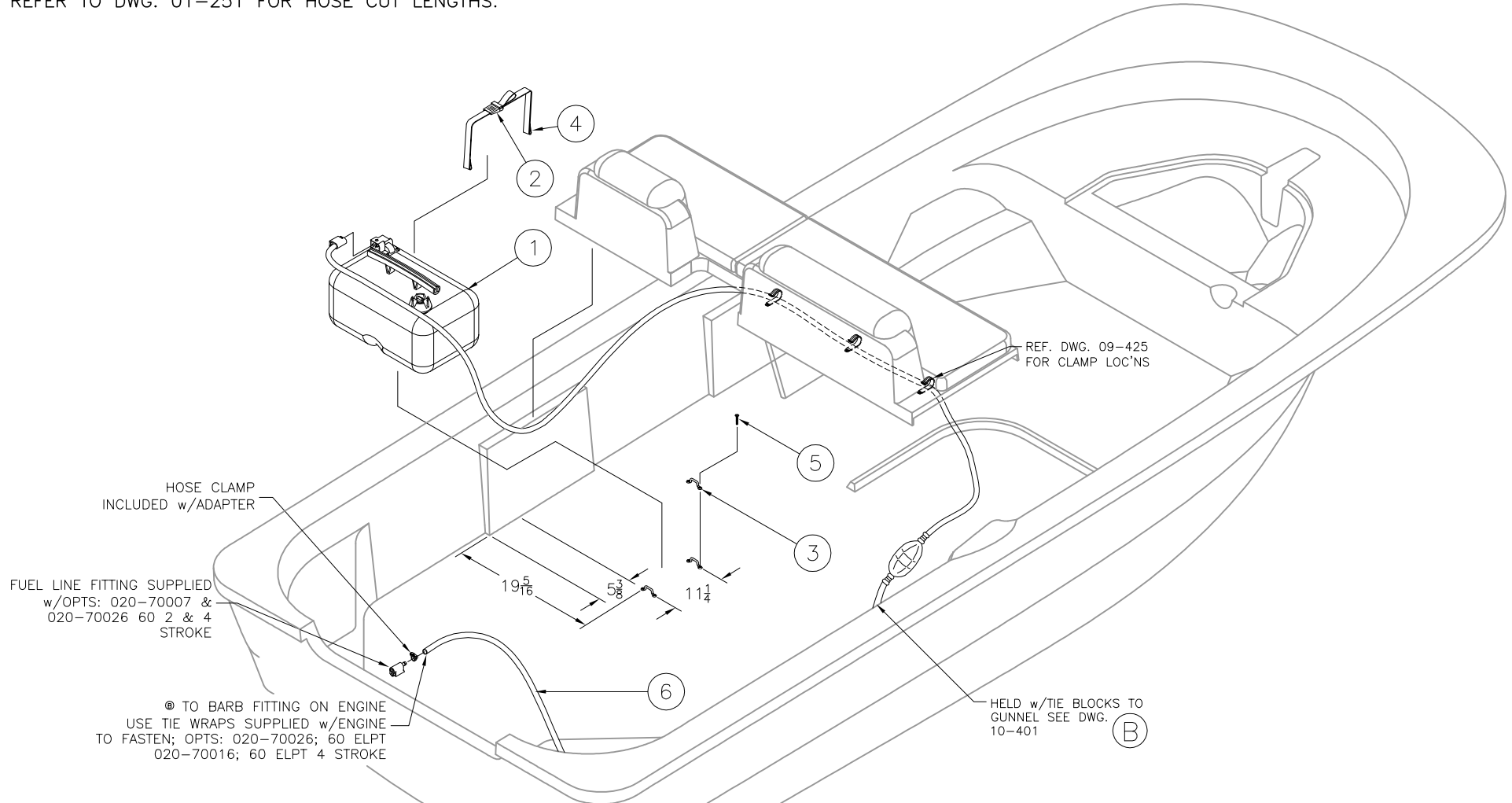
REV.
F

CURRENT ECD
060130

NOTES:

1. REFER TO DWG.#06-101 FOR ALL HOLE CUTOUTS.
2. HOSE & LINE ROUTINGS TO COMPLY w/NMMA, USCG, & ABYC STDS. AND RECOMMENDATIONS.
3. REFER TO DWG. 01-251 FOR HOSE CUT LENGTHS.

REVISIONS					
REV.	DESCR.	BY	DATE	APPVD.	ECN NO.
F	MODIFY DRAWING BORDER TO AN ATTRIBUTED BORDER	TS	01/23/06	AVM	060130



INTERPRET DIMENSIONS AND TOLERANCES PER ANSI Y 14.5 UNLESS OTHERWISE SPECIFIED DIMENSIONS ARE IN INCHES.
 TOLERANCES: ANGLES = ± .5° .XXX = ± .010
 .X = ± .1 .XX = ± .03 X = ± 1/16
 DO NOT SCALE DRAWING



CHECKED: R. AVILA	DATE: 03/26/02	DRAWN: R. CRAVEN	DATE: 03/11/02	SCALE: NONE	BOAT MODEL 150SP	MOLD NO.
APPD: K. RANIERI	DATE: 03/26/02	DWG. TITLE: FUEL SYSTEM INSTALLATION			INIT. REL. ECN NO: 011003	DWG. NO: 10501
DESIGN: L. SCHOLZ	DATE: 3/26/02					SHT. NO. 1 OF 2
INT. ENG: M. GATICA	DATE: 5/14/02					

THIS DOCUMENT IS THE PROPERTY OF BOSTON WHALER, INC. MFG. DEPT., EDGEWATER, FLORIDA. ALL RIGHTS ARE RESERVED. THIS DOCUMENT AND INFORMATION CONTAINED MUST NOT BE COPIED OR DISCLOSED TO OTHERS WITHOUT WRITTEN PERMISSION OF BOSTON WHALER, INC.

DWG. NO:
10501

REV.
F

CURRENT ECD
060130

NOTES:

Parts List

ITEM	QTY	U/M	DESCRIPTION	B.W.I. NO.
1	1	EA.	TANK, FUEL 6.6GAL PLAS	1121706
2	1	EA.	UPH PARTS, BUCKLE 1" SIDE RELEASE M/F BLK	0871004
3	2	EA.	BRACKET, BW-97 BATT HOLDDOWN 1.25"CHR/PLT	1042837
4	4.5	FT.	WEBBING, BW-97 STRAP NYLON 1"	1030105
5	4	EA.	SCREW, TAPPING #10A X 1" POH SC	1008507
6	0	FT.	ACC PART, MERC HOSE (FUEL LINE)	0980672



INTERPRET DIMENSIONS AND TOLERANCES PER ANSI Y 14.5 UNLESS OTHERWISE SPECIFIED DIMENSIONS ARE IN INCHES.
 TOLERANCES: ANGLES = ± .5° .XXX = ± .010
 .X = ± .1 X = ± 1/16
 .XX = ± .03
 DO NOT SCALE DRAWING

DRAWN: R CRAVEN DATE: 03/11/02 SCALE: NONE
 DWG. TITLE: FUEL SYSTEM INSTALLATION

BOAT MODEL 150SP MOLD NO.
 INIT. REL. ECN NO: 011003 DWG. NO: 10501 SHT. NO. 2 OF 2

THIS DOCUMENT IS THE PROPERTY OF BOSTON WHALER, INC. MFG. DEPT., EDGEWATER, FLORIDA. ALL RIGHTS ARE RESERVED. THIS DOCUMENT AND INFORMATION CONTAINED MUST NOT BE COPIED OR DISCLOSED TO OTHERS WITHOUT WRITTEN PERMISSION OF BOSTON WHALER, INC.

DWG. NO:
12401

REV.
C

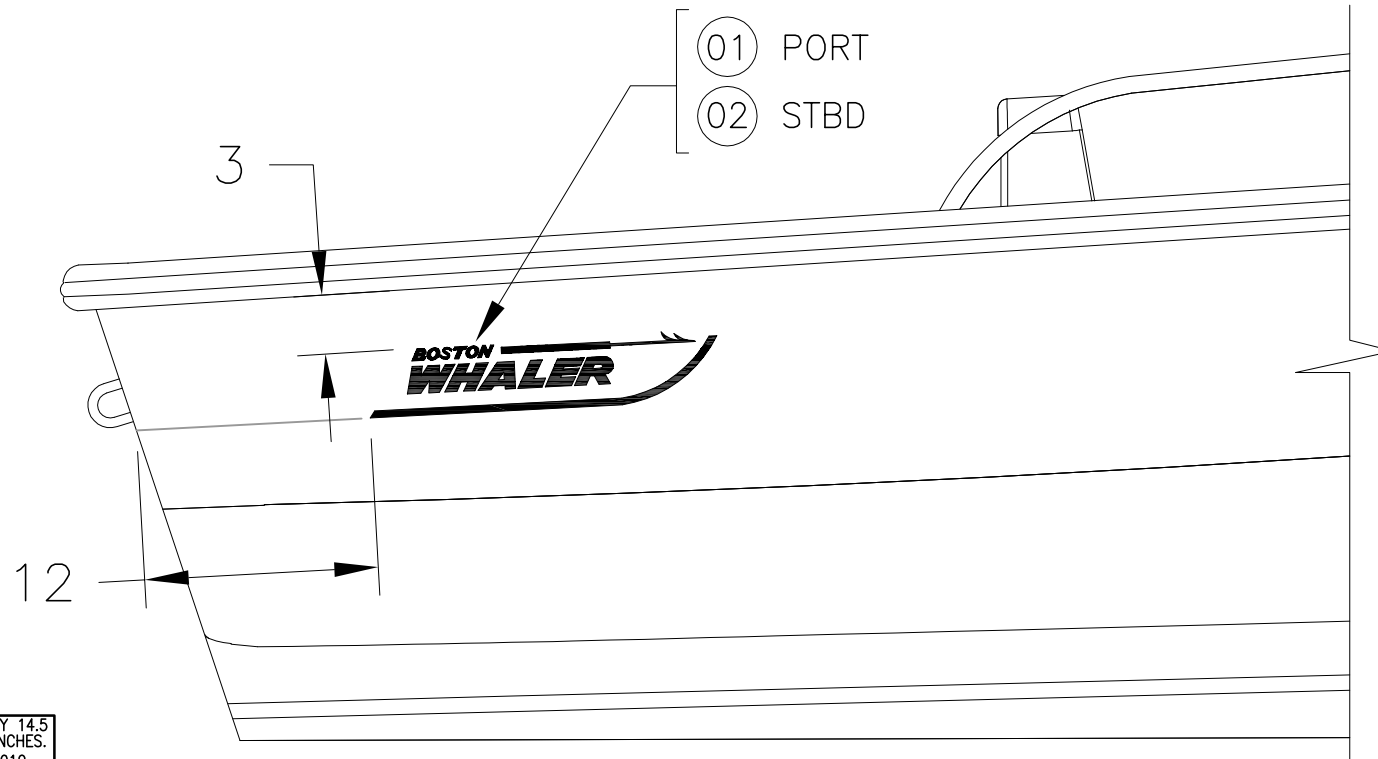
CURRENT ECD
060130

NOTES:

REVISIONS					
REV.	DESCR.	BY	DATE	APPVD.	ECN NO.
A	2004 MODEL YEAR ENHANCEMENTS	HJR	05/23/03	RA	030336
B	CHANGED NUMBERING SYSTEM/ APPLY ATT. BORDER	AVM	06/12/03	ZAC	030310
C	MODIFY DRAWING BORDER TO AN ATTRIBUTED BORDER	TS	01/23/06	AVM	060130

PARTS LIST

ITEM	QTY.	U/M	DESCRIPTION	B.W.I. NO.
Ⓐ 01	1	EA.	DECAL, BW-04 LOGO 20" RED PRT (DRIP MOLD)	1752937
Ⓐ 02	1	EA.	DECAL, BW-04 LOGO 20" RED STB (DRIP MOLD)	1752938



INTERPRET DIMENSIONS AND TOLERANCES PER ANSI Y 14.5
UNLESS OTHERWISE SPECIFIED DIMENSIONS ARE IN INCHES.
TOLERANCES: ANGLES = ± .5° .XXX = ± .010
.X = ± .1 .XX = ± .03 X = ± 1/16
DO NOT SCALE DRAWING



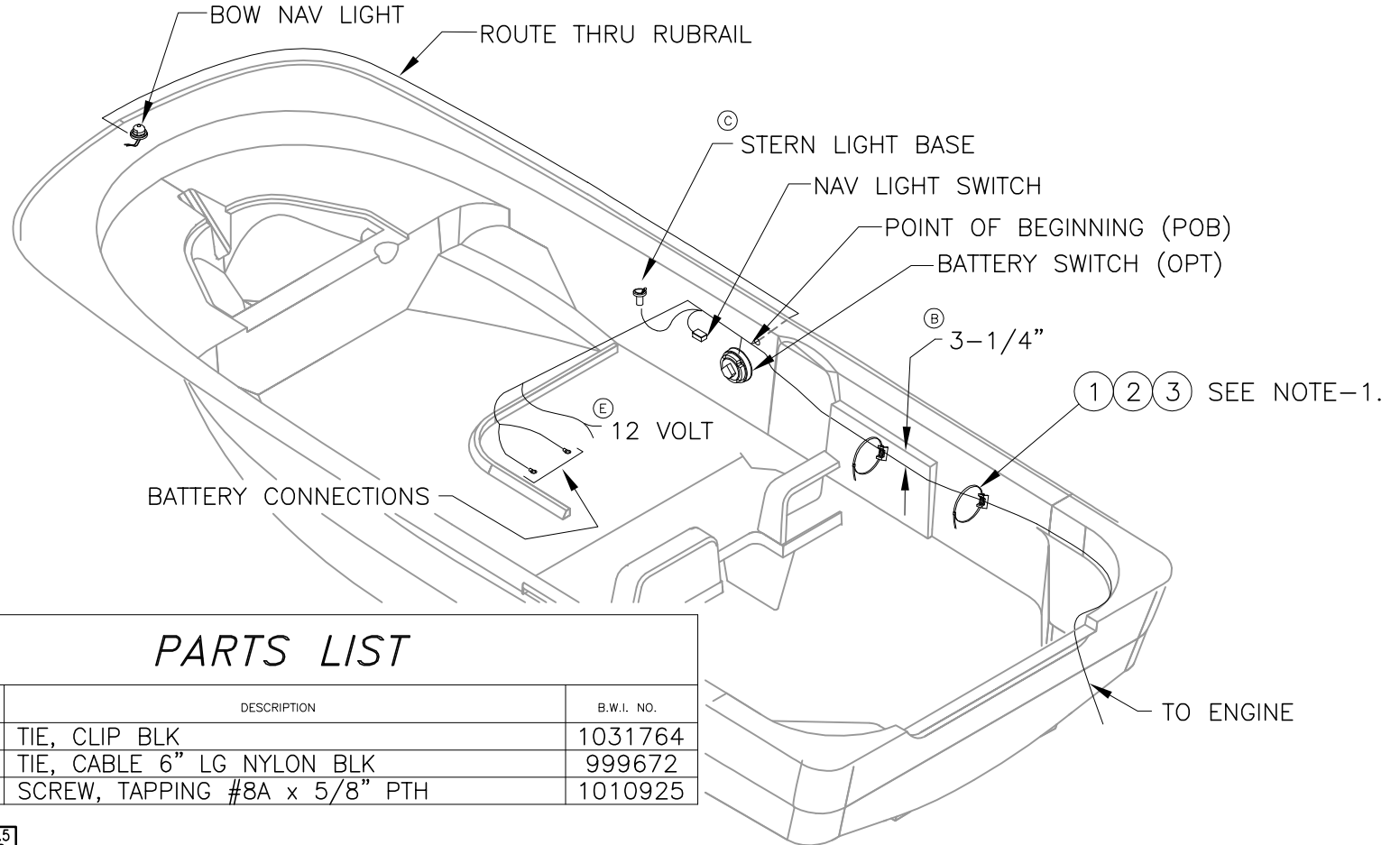
CHECKED: A.G.S.	DATE: 4/8/02	DRAWN: R DURHAM	DATE: 04/08/02	SCALE: NONE	BOAT MODEL	MOLD NO.
APPD: KR	DATE: 4/8/02	DWG. TITLE:			150SP	
DESIGN: L. SCHOLZ	DATE: 4/8/02	GRAPHICS LOCATIONS			INIT. REL. ECN NO:	DWG. NO:
INT. ENG: MG	DATE: 5/12/02				011003	12401
						SHT. NO.
						1 of 1

THIS DOCUMENT IS THE PROPERTY OF BOSTON WHALER, INC. MFG. DEPT., EDGEWATER, FLORIDA. ALL RIGHTS ARE RESERVED. THIS DOCUMENT AND INFORMATION CONTAINED MUST NOT BE COPIED OR DISCLOSED TO OTHERS WITHOUT WRITTEN PERMISSION OF BOSTON WHALER, INC.

DWG. NO: 07801	REV. E	CURRENT ECD 051006
-------------------	-----------	-----------------------

REVISIONS					
REV.	DESCR.	BY	DATE	APPVD.	ECN NO.
C	STERN LIGHT BASE MOVED TO CONSOLE AREA	RD	04/23/02	ZAC	01-10-03
D	Changed Numbering System/Apply Att.Border.	AVM	03/10/03	ZAC	03-03-02
E	ADDED 12 VOLT DETAIL.	SL	12/29/05	ME	051006

1. SECURE HARNESS w/ITEMS 01,02 & 03 ON 14" MAX CENTERS. INSTALLATION SHALL BEGIN AT "POB".
2. ALL TERMINAL CONNECTIONS SHALL BE CORROSION SEALED USING T-9 SPRAY.
3. SEE DWG. #07-205 FOR HARNESS CONSTRUCTION.
4. WIRE TO BE ROUTED ALONG GUNWALE SIDE & SECURED TO CONSOLE.



PARTS LIST

ITEM	QTY.	U/M	DESCRIPTION	B.W.I. NO.
01	10	EA.	TIE, CLIP BLK	1031764
02	15	EA.	TIE, CABLE 6" LG NYLON BLK	999672
03	10	EA.	SCREW, TAPPING #8A x 5/8" PTH	1010925

INTERPRET DIMENSIONS AND TOLERANCES PER ANSI Y 14.5 UNLESS OTHERWISE SPECIFIED DIMENSIONS ARE IN INCHES.
 TOLERANCES: ANGLES = ± .5° .XXX = ± .010
 .X = ± .1 X = ± 1/16
 .XX = ± .03 X = ± 1/16
 DO NOT SCALE DRAWING



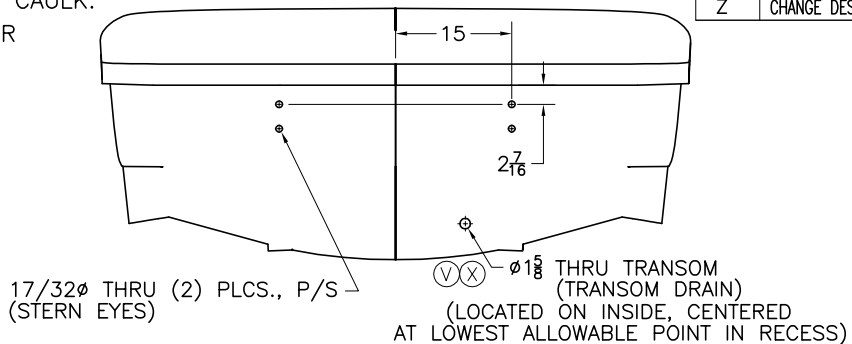
CHECKED: RA	DATE: 3/27/02	DRAWN: HREAD	DATE: 032502	SCALE: NONE	BOAT MODEL 150SP	MOLD NO.
APPD: R. CLIFTON	DATE: 3/27/02	DWG. TITLE: HARNESS INSTALLATION			INIT. REL. ECN NO: 011003	DWG. NO: 07801
DESIGN: L. SCHOLZ	DATE: 3/28/02					SHT. NO. 1 OF 1
INT. ENG:	DATE:					

THIS DOCUMENT IS THE PROPERTY OF BOSTON WHALER, INC. MFG. DEPT., EDGEWATER, FLORIDA. ALL RIGHTS ARE RESERVED. THIS DOCUMENT AND INFORMATION CONTAINED MUST NOT BE COPIED OR DISCLOSED TO OTHERS WITHOUT WRITTEN PERMISSION OF BOSTON WHALER, INC.

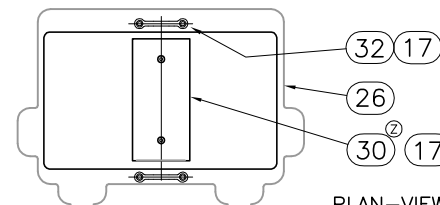
DWG. NO: 06101
 REV. Z
 CURRENT ECD 060837

1. ALL EXPOSED/CUT FRP OR WOOD SURFACES SHALL BE SEALED WITH CATALYZED WHITE GEL COAT.
2. ALL THRU HULL FITTINGS & FASTENERS SHALL BE SEALED WHEN INSTALLED USING WHITE SILICONE CAULK.
3. SEE DWG. 01-201 FOR FIXTURE LIST.

REVISIONS					
REV.	DESCR.	BY	DATE	APPVD.	ECN NO.
W	CHANGED PN# & DESCRIPTION ITEM 31, SHEETS 3 & 4	SLJ	07/24/06	AVM	060519
X	ADD 63-64, 1 WAS 1042068, 2 WAS 1042084, 3 WAS QNT 2, Ø WAS 1 3/8	SWH	8/22/06	AVM	060894
Y	ADDED STD & OPT NOTE TO ENG CONTROL, SHEET 3	SLJ	08/24/06	AVM	0606164
Z	CHANGE DESCRIPTION & PART NO. FOR ITEMS #24, #30, SHEET 4.	JC	01/29/07	AVM	060837

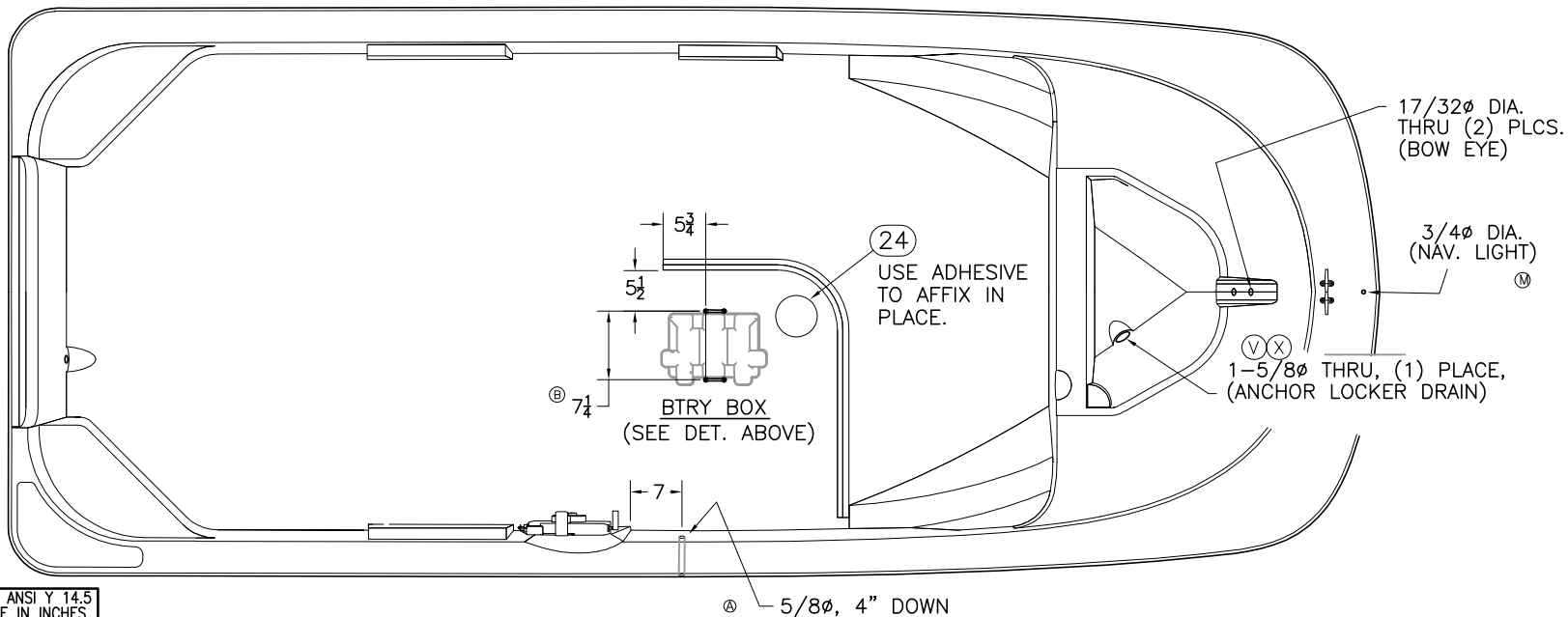


TRANSOM VIEW



**PLAN-VIEW
BTRY BOX INSTALL'N.**

ITEM 30 MOUNTED ON FRP SURFACE USING ITEM 17. BOX WILL THEN REGISTER ON CLEAT FIRMLY WHEN STRAP IS SECURED.



INTERPRET DIMENSIONS AND TOLERANCES PER ANSI Y 14.5 UNLESS OTHERWISE SPECIFIED DIMENSIONS ARE IN INCHES.
 TOLERANCES: ANGLES = ± .5° .XXX = ± .010
 .X = ± .1 X = ± 1/16
 .XX = ± .03 X = ± 1/16
 DO NOT SCALE DRAWING



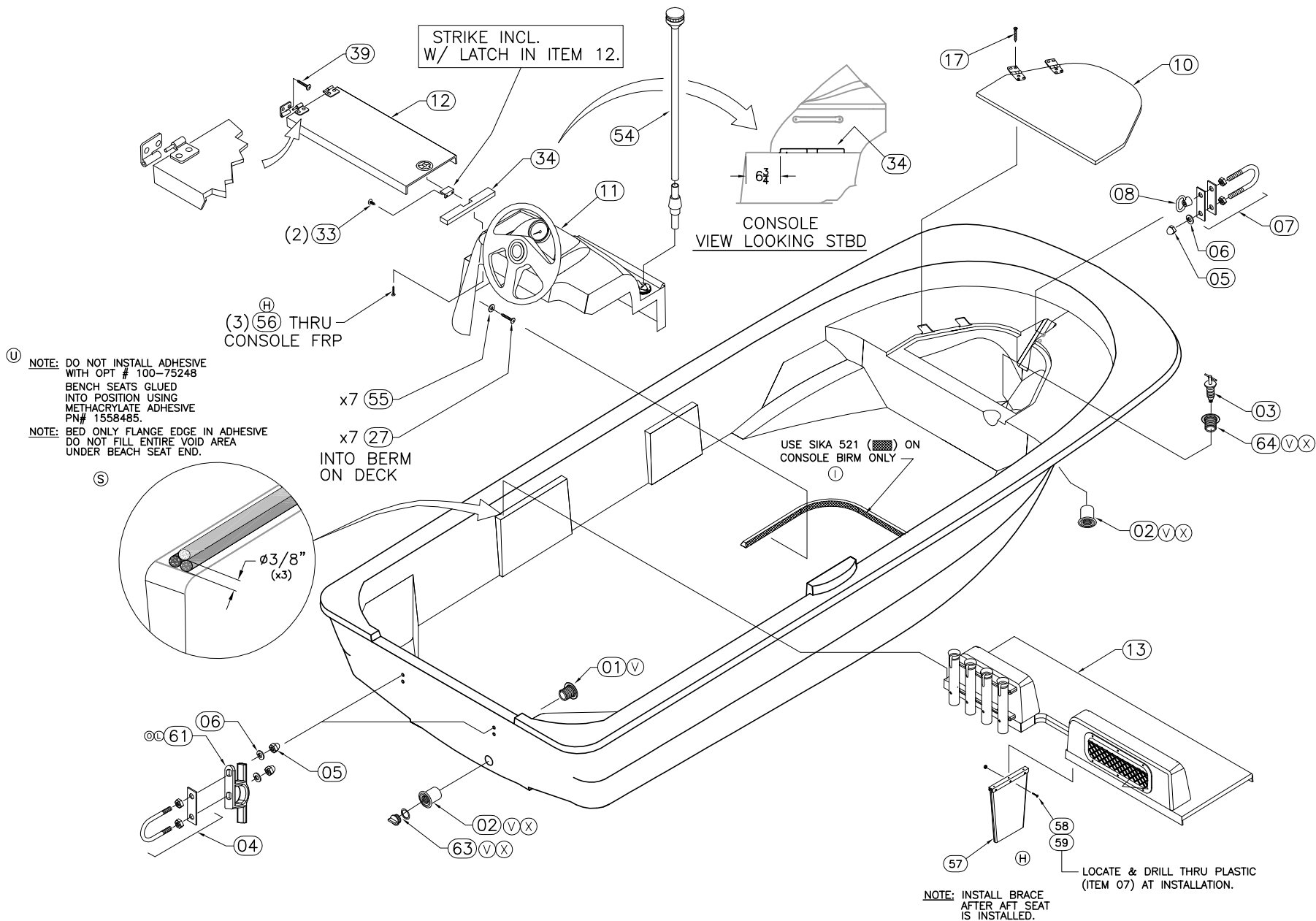
CHECKED: R. AVILA	DATE: 3/25/02	DRAWN: H READ	DATE: 02/04/02	SCALE: NONE	BOAT MODEL 150SP	MOLD NO.
APPD: K. RANIERI	DATE: 3/25/02	DWG. TITLE: HULL CUTOUTS & OUTFIT			INIT. REL. ECN NO: 011003	DWG. NO: 06101
DESIGN: L. SCHOLZ	DATE: 3/28/02					SHT. NO. 1 of 4
INT. ENG: M. GATICA	DATE: 5/14/02					

THIS DOCUMENT IS THE PROPERTY OF BOSTON WHALER, INC. MFG. DEPT., EDGEWATER, FLORIDA. ALL RIGHTS ARE RESERVED. THIS DOCUMENT AND INFORMATION CONTAINED MUST NOT BE COPIED OR DISCLOSED TO OTHERS WITHOUT WRITTEN PERMISSION OF BOSTON WHALER, INC.

DWG. NO:
06101

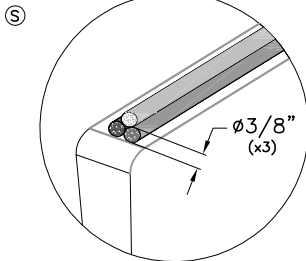
REV.
Z

CURRENT ECD
060837



U NOTE: DO NOT INSTALL ADHESIVE WITH OPT # 100-75248 BENCH SEATS GLUED INTO POSITION USING METHACRYLATE ADHESIVE PN# 1558485.

NOTE: BED ONLY FLANGE EDGE IN ADHESIVE DO NOT FILL ENTIRE VOID AREA UNDER BEACH SEAT END.



NOTE: INSTALL BRACE AFTER AFT SEAT IS INSTALLED.



INTERPRET DIMENSIONS AND TOLERANCES PER ANSI Y 14.5 UNLESS OTHERWISE SPECIFIED DIMENSIONS ARE IN INCHES.

TOLERANCES: ANGLES = ± .5° .XXX = ± .010
.X = ± .1 X = ± 1/16
.XX = ± .03

DO NOT SCALE DRAWING

DRAWN: H READ

DATE: 02/04/02

SCALE: NONE

BOAT MODEL

MOLD NO.

DWG. TITLE:

HULL CUTOUTS & OUTFIT

150SP

INIT. REL. ECN NO:

DWG. NO:

011003

06101

SHT. NO.

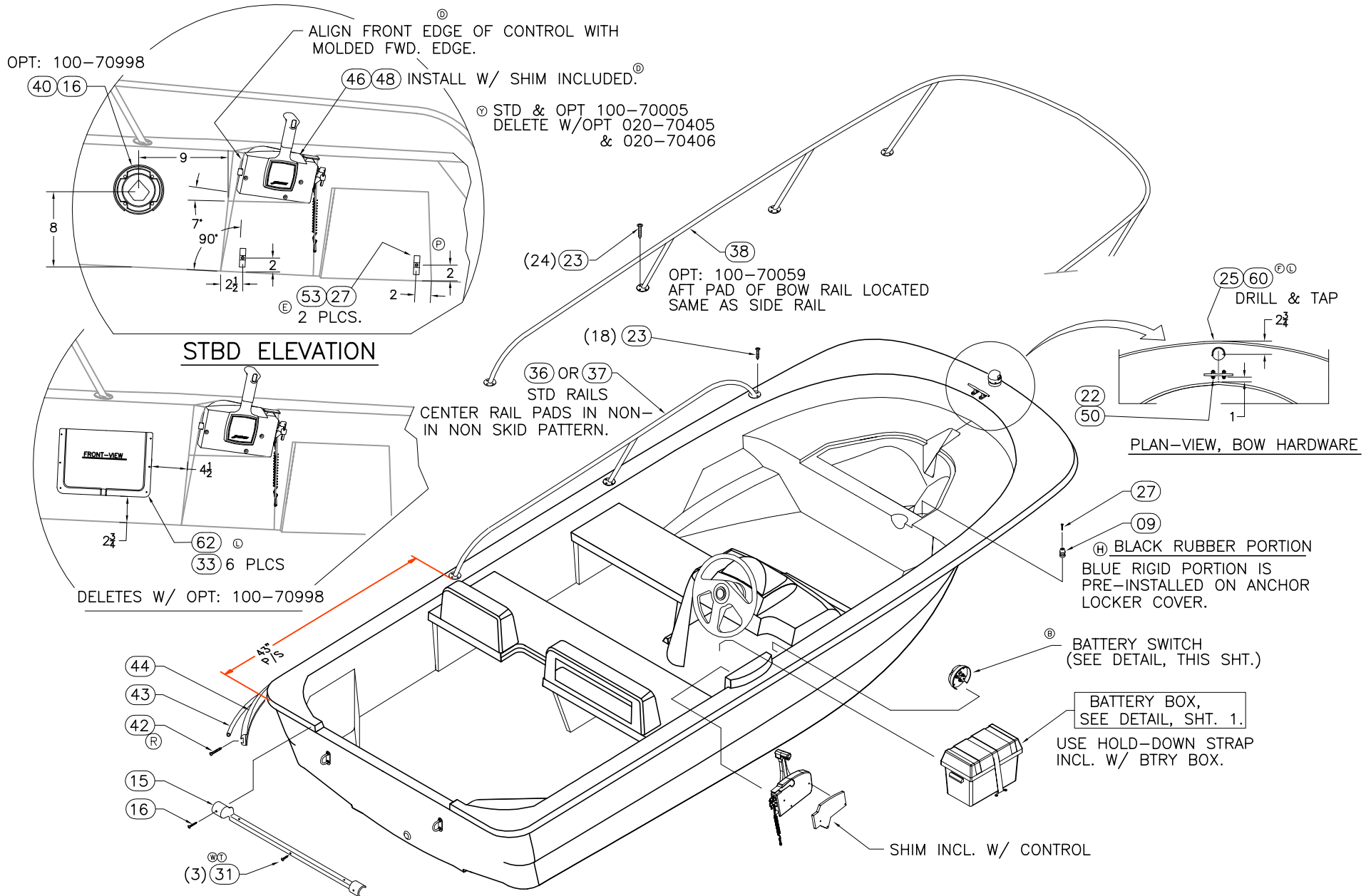
2 OF 4

THIS DOCUMENT IS THE PROPERTY OF BOSTON WHALER, INC. MFG. DEPT., EDGEWATER, FLORIDA. ALL RIGHTS ARE RESERVED. THIS DOCUMENT AND INFORMATION CONTAINED MUST NOT BE COPIED OR DISCLOSED TO OTHERS WITHOUT WRITTEN PERMISSION OF BOSTON WHALER, INC.

DWG. NO:
06101

REV.
Z

CURRENT ECD
060837



INTERPRET DIMENSIONS AND TOLERANCES PER ANSI Y 14.5 UNLESS OTHERWISE SPECIFIED DIMENSIONS ARE IN INCHES.
 TOLERANCES: ANGLES = ± .5° .XXX = ± .010
 .X = ± .1 X = ± 1/16
 .XX = ± .03
 DO NOT SCALE DRAWING

DRAWN: H READ DATE: 02/04/02 SCALE: NONE
 DWG. TITLE: HULL CUTOUTS & OUTFIT


BOAT MODEL 150SP	MOLD NO.
INIT. REL. ECN NO: 011003	DWG. NO: 06101
SHT. NO. 3 OF 4	

THIS DOCUMENT IS THE PROPERTY OF BOSTON WHALER, INC. MFG. DEPT. EDGEWATER, FLORIDA. ALL RIGHTS ARE RESERVED. THIS DOCUMENT AND INFORMATION CONTAINED MUST NOT BE COPIED OR DISCLOSED TO OTHERS WITHOUT WRITTEN PERMISSION OF BOSTON WHALER, INC.

DWG. NO: 06101
 REV. Z
 CURRENT ECO 060837

PARTS LIST

	ITEM	QTY.		U/M	DESCRIPTION	BWI NO.
		STD	OPT.			
(XV)	1	1	-	EA.	THRU-HULL, MARELON BW-06 SHORT MALE	1806031
(XV)	2	2	-	EA.	THRU-HULL, MARELON BW-06 SHORT FEMALE	1806032
(XV)	3	1	-	EA.	PLUG, BRASS 1" DRAIN TURN-TITE	0133371
(L)	4	2	-	EA.	EYE, BOW 1/2" X 3 7/16" SS	0126557
	5	5	-	EA.	NUT, ACORN #1/2-13 SC	1662402
	6	5	-	EA.	WASHER, LOCK/SPLIT 1/2" SC	1326214
	7	1	-	EA.	EYE. BOW 1/2" x 6" SS	0995472
(K)	8	1	-	EA.	EYE, LIFTING 1/2" SS	1750949
	9	1	-	EA.	STOP, DOOR HOLDER RBR BLUE	1142348
	10	1	-	EA.	ANCHOR LOCKER COVER SUB-ASSY.	09-402
	11	1	-	EA.	CONSOLE SUB-ASSY.	09-201
	12	1	-	EA.	FWD BENCH SEAT SUB-ASSY.	09-425
	13	1	-	EA.	HELM BENCH SEAT SUB-ASSY.	09-425
(E)	14	1	-	EA.	LIGHT, NAV A/R STERN 86"N/BEND FOLDING	1604404
(S)(B)	15	1	-	EA.	CAP, RUB RAIL BW150AP-02 TRNSM TRIM	1691318
	16	2	4	EA.	SCREW, TAPPING #10A X 2" PTH SC	1008754
	17	10	-	EA.	SCREW, TAPPING #10A x 1" POH SC	1008507
	18	1	-	EA.	PLATE, NMMA 02 BW150SP	1689770
(C)	19	1	-	EA.	PLATE, BUILDER CE 02 BW150SP	1689771
	20	4	-	EA.	RIVET, POP/BLIND #1/8 x 1/4" ALUM	1007855
(L)	21	1	-	PR.	CHOCK, 4.5" SS	0639237
	22	1	-	EA.	CLEAT, 6" SS HOLLOW BASE	1027002
(L)(F)	23	18	24	EA.	SCREW, TAPPING #10A x 1.5" PPH	1010610
(Z)	24	1	-	EA.	COVER, POLY STY 3.5" POUR HOLE WHLR WHT	1814517
(L)	25	1	-	EA.	LIGHT, BW-03 BOW W/HOOD & RING SS	1748822
	26	1	-	EA.	HOLDER, BATTERY GR24 FULLY ENCL	0650598
(H)(G)(E)	27	10	-	EA.	SCREW, TAPPING #10A x 1" PTH SC	1008739
(E)	28	1	-	EA.	LIGHT, NAV STERN BASE RND W/CAP	1261361
(E)	29	1	-	EA.	LIGHT, NAV A/R STERN 54" N/BEND	1691343
(Z)	30	1	-	EA.	CLEAT, POLY BW-07 BATT BOX WHLR WHT	1878246
(W)(T)	31	3	-	EA.	SCREW, TAPPING #10A X 3/4" PTH SC	1008762
	32	2	-	EA.	BRACKET, BW-97 BATT HOLDDOWN 1.25"CHR/PLT	1042837
(L)	33	8	-	EA.	SCREW, TAPPING #8A x 5/8" PTH SC	1010925
	34	1	-	EA.	SUPPORT, HDPE BW150SP-02 FWD SEAT CATCH	1691461
(E)	35	1	-	EA.	CAP, DRAIN BOOT LIGHT MAST BLK	1042761
	36	1	-	EA.	RAIL, SIDE BW150-02 SS PORT	1689773
	37	1	-	EA.	RAIL, SIDE BW150-02 SS STBD	1690995
	38	-	1	EA.	RAIL, BOW BW150-02 SS	1689774
	39	4	-	EA.	SCREW, TAPPING #10A x 1.5" POH SC	1010610
	40	-	1	EA.	SWITCH, BATTERY ON/OFF W/O LOCK W/O DISC	0162701
(E)	41	3	-	EA.	SCREW, TAPPING #6A x 1/2" PTH SC	1008796
(R)	42	60	-	EA.	SCREW, TAP #10A X 1.5" W/STP EPXY ORNG PFH SC	1814515
	43	1	-	EA.	INSERT, RUB RAIL CHAR FLEX 40'	1020817
	44	1	-	EA.	RUBRAIL, PLASTIC CHAR 40'	1020858
(E)	45	1	-	EA.	VENT, CLAMSHHELL ROPE LCKR 1 5/8" X 1.5"	0126870
(C)	46	1	-	EA.	CONTROL, SIDE MNT REMOTE 14 PIN 15'	1802560
(E)	47	3	-	EA.	SCREW, TAPPING #8A x 1" POH SC	1213065
	48	3	-	EA.	SCREW, TAPPING #14A x 3" POH SC	1335405
(E)	49	1	-	FT.	TUBING, VINYL SPEEDO BLK	1043017
	50	4	-	EA.	SCREW, MACHINE #1/4-20 x 1" PFH SC	1009950
(F)	51	3	-	EA.	SCREW, TAPPING #4A x 1" PPH SC	1010636
(L)	52	4	-	EA.	SCREW, MACHINE #10-24 X 1" PFH SC	1326321
(E)	53	1	-	PR.	CLIP, POLE STRG BLK - MAST LIGHT	0590646
(C)	54	1	-	EA.	LIGHT, NAV A/R STERN 69" STRAIGHT	1727618
(C)	55	7	-	EA.	WASHER, FENDER #10 X 1" SC	1260454
(H)	56	3	-	EA.	SCREW, TAPPING #10A X 3/4" PTH SC	1008762
(H)	57	1	-	EA.	SUPPORT, HDPE BW150SP-02 SEAT SEAFM	1691285
(H)	58	3	-	EA.	SCREW, MACH.#10-24 X 1.25" POH SC	1008424
(H)	59	3	-	EA.	NUT, HEX NYLON LOCK #10-24 SC	1007772
(L)	60	3	-	EA.	SCREW, MACHINE #1/4-20 X 2.5" PFH SC	1326156
(L)	61	2	-	EA.	EYE, LIFTING CLEAT 1/2" SS	1753511
(L)	62	1	-	EA.	BIN, ABS BW150SP-04 STRG WHT	1755563
(XV)	63	2	-	EA.	PLUG, MARELON BW-06 DRAIN 1" W/GASKET	1806033
(XV)	64	1	-	EA.	THRU-HULL, MARELON BW-06 LONG MALE	1806030

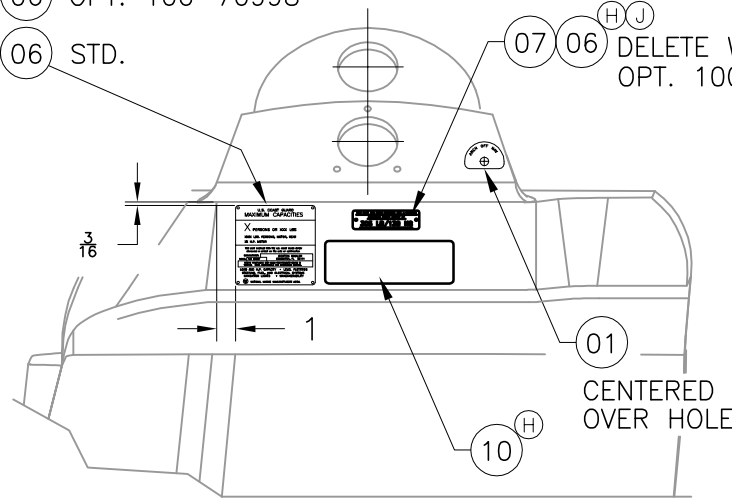
 BOSTON WHALER PRODUCT DEV. & MFG. ENGINEERING GROUP	INTERPRET DIMENSIONS AND TOLERANCES PER ANSI Y 14.5 UNLESS OTHERWISE SPECIFIED DIMENSIONS ARE IN INCHES. TOLERANCES: ANGLES = ± .5° .XXX = ± .010 .X = ± .1 X = ± 1/16 .XX = ± .03 X = ± .010	DRAWN: H READ DWG. TITLE: HULL CUTOUTS & OUTFIT	DATE: 02/04/02 SCALE: NONE	BOAT MODEL: 150SP INIT. REL. ECN NO: 011003	MOLD NO. DWG. NO: 06101	SHT. NO. 4 OF 4
---	--	--	-------------------------------	--	----------------------------	--------------------

THIS DOCUMENT IS THE PROPERTY OF BOSTON WHALER, INC. MFG. DEPT., EDGEWATER, FLORIDA. ALL RIGHTS ARE RESERVED. THIS DOCUMENT AND INFORMATION CONTAINED MUST NOT BE COPIED OR DISCLOSED TO OTHERS WITHOUT WRITTEN PERMISSION OF BOSTON WHALER, INC.

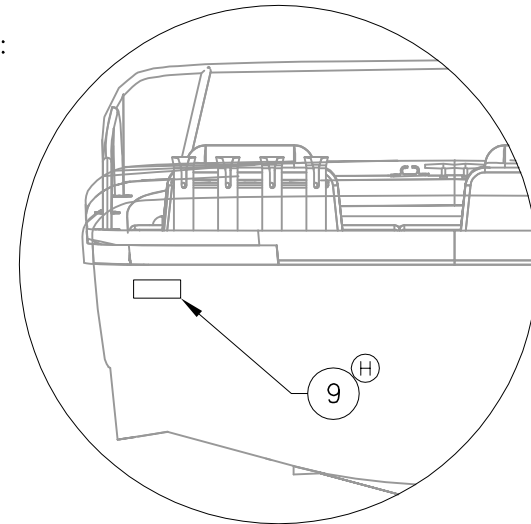
DWG. NO: 12101 REV. J CURRENT ECD 060671

REVISIONS					
REV.	DESCR.	BY	DATE	APPVD.	ECN NO.
I	DELETE ITEM 2	SLJ	05/24/06	AVM	060242
J	ADDED ITEM #11/OPT 100-71000.	SL	08/07/06	AVM	060671

- (11) (6) (J) OPT. 100-71000
- (8) (6) OPT. 100-70995
- (05) (06) OPT. 100-70998
- (04) (06) STD.



CONSOLE VIEW LOOKING FWD.



TRANSOM VIEW

PARTS LIST

ITEM	QTY.	U/M	DESCRIPTION	B.W.I. NO.
(D) 1	1	EA.	LABEL, BW-03 ANCH/OFF/NAV	1746094
(I) 2	1	EA.	LABEL, BW SAFETY HI-PERF BOAT	1017136
(F) 3	1	EA.	LABEL, BW ENG TRIM TAB STEERING PULL WARNING	1016518
4	1	EA.	PLATE, NMMA 02-BW150SP	1689770
5	1	EA.	PLATE, BUILDERS CE 02-BW150SP	1689771
6	6	EA.	RIVET, POP/BLIND #1/8 X 1/4" ALUM	1007855
7	1	EA.	PLATE, BW-03 MAX ENG WT 305LB/138KG	1735925
8	1	EA.	PLATE, SAFETY CANADIAN CAP BW150SP-03	1746011
(H) (G) 9	1	EA.	LABEL, DANGER CO TRANSOM 06	1811367
(H) 10	1	EA.	LABEL, DANGER CO HELM 06	1811368
(J) 11	1	EA.	PLATE, BUILDERS AU 07-BW150SP	1850569

INTERPRET DIMENSIONS AND TOLERANCES PER ANSI Y 14.5 UNLESS OTHERWISE SPECIFIED DIMENSIONS ARE IN INCHES.
 TOLERANCES: ANGLES = ± .5° .XXX = ± .010
 .X = ± .1 .XX = ± .03 X/X = ± 1/16
 DO NOT SCALE DRAWING



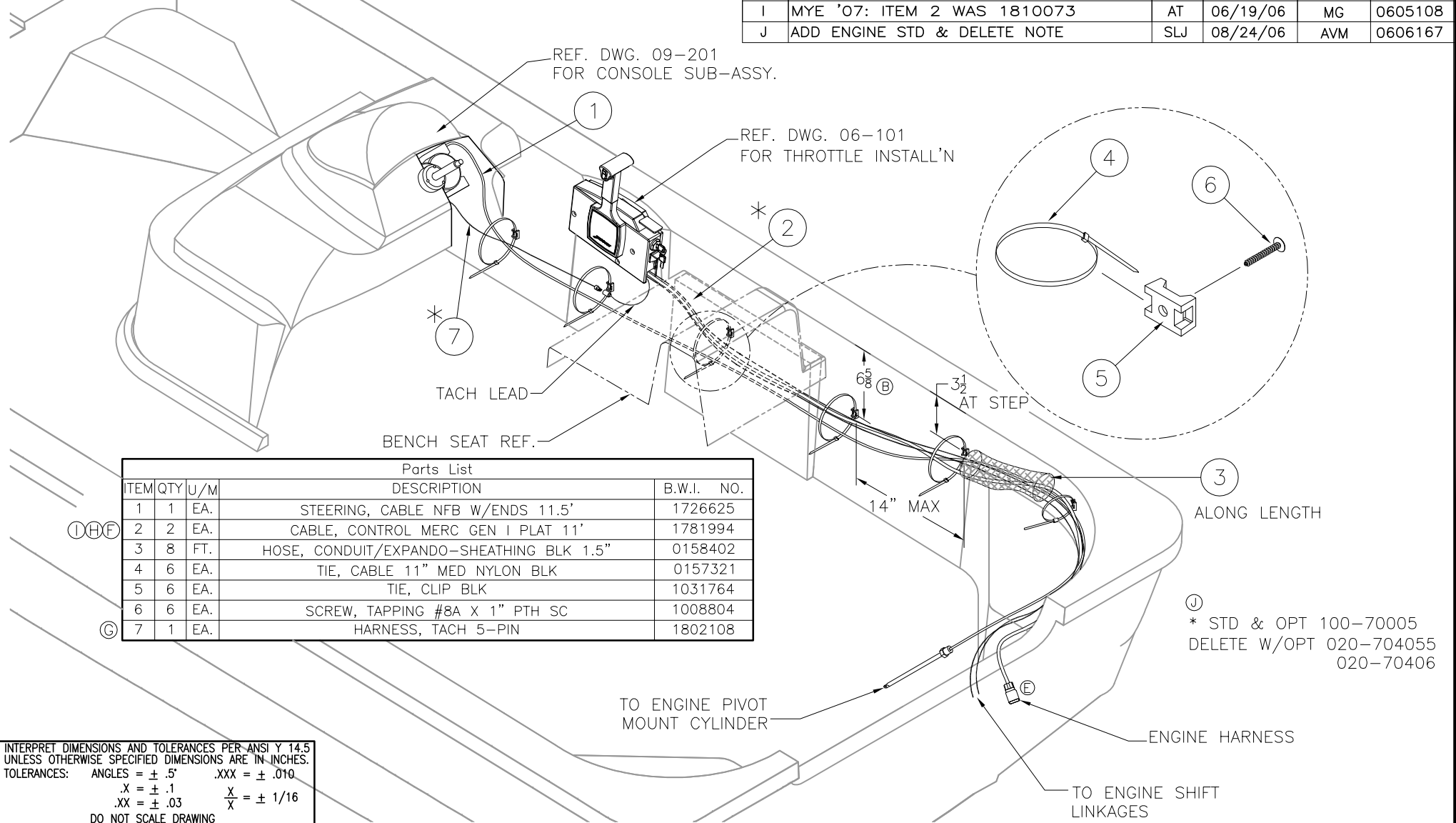
CHECKED: E. SKAGGS	DATE: 04/16/02	DRAWN: R DURHAM	DATE: 020702	SCALE: NTS	BOAT MODEL 150SP	MOLD NO.
APPD: R. AVILA	DATE: 04/16/02	DWG. TITLE: LABEL LOCATIONS			INIT. REL. ECN NO: 011003	DWG. NO: 12101
DESIGN: L. SCHOLZ	DATE: 04/16/02					SHT. NO. 1 of 1
INT. ENG: M. GATICA	DATE: 5/15/02					

THIS DOCUMENT IS THE PROPERTY OF BOSTON WHALER, INC. MFG. DEPT., EDGEWATER, FLORIDA. ALL RIGHTS ARE RESERVED. THIS DOCUMENT AND INFORMATION CONTAINED MUST NOT BE COPIED OR DISCLOSED TO OTHERS WITHOUT WRITTEN PERMISSION OF BOSTON WHALER, INC.

DWG. NO: 10401
 REV. J
 CURRENT ECD 0606167

REVISIONS					
REV.	DESCR.	BY	DATE	APPVD.	ECN NO.
E	MYE' 06: CHANGED ENGINE HARNESS	MRZ	04/25/05	ME	05-03-60
F	MYE' 06: #2 P/N WAS 0995852	MRZ	05/06/05	ME	05-04-37
G	CHANGE ITEM 7 FROM PART# 0608281 TO PART# 1802108	GD	10/13/05	ME	05-06-27
H	ITEM #2 P/N 1810073 WAS 1804036.	SL	10/13/05	ME	050686
I	MYE '07: ITEM 2 WAS 1810073	AT	06/19/06	MG	0605108
J	ADD ENGINE STD & DELETE NOTE	SLJ	08/24/06	AVM	0606167

1. CONNECT CABLES IN ACCORDANCE w/MANUFACTURERS INSTALLATION SHEET.
2. ROUTE CABLES TO AVOID TWIST OR KINKING.
3. MIN. BEND RADIUS FOR STEERING CABLES IS 8".
4. MIN. BEND RADIUS FOR THROTTLE CABLES IS 12".



REF. DWG. 09-201
FOR CONSOLE SUB-ASSY.

REF. DWG. 06-101
FOR THROTTLE INSTALL'N

BENCH SEAT REF.

ITEM	QTY	U/M	DESCRIPTION	B.W.I. NO.
1	1	EA.	STEERING, CABLE NFB W/ENDS 11.5'	1726625
2	2	EA.	CABLE, CONTROL MERC GEN I PLAT 11'	1781994
3	8	FT.	HOSE, CONDUIT/EXPANDO-SHEATHING BLK 1.5"	0158402
4	6	EA.	TIE, CABLE 11" MED NYLON BLK	0157321
5	6	EA.	TIE, CLIP BLK	1031764
6	6	EA.	SCREW, TAPPING #8A X 1" PTH SC	1008804
7	1	EA.	HARNESS, TACH 5-PIN	1802108

* STD & OPT 100-70005
DELETE W/OPT 020-704055
020-70406

INTERPRET DIMENSIONS AND TOLERANCES PER ANSI Y 14.5 UNLESS OTHERWISE SPECIFIED DIMENSIONS ARE IN INCHES.
 TOLERANCES: ANGLES = ± .5' .XXX = ± .010
 .X = ± .1 .XX = ± .03
 .X/X = ± 1/16
 DO NOT SCALE DRAWING

 PRODUCT DEV. & MFG. ENGINEERING GROUP	CHECKED: R. AVILA	DATE: 03/27/02	DRAWN: R DURHAM	DATE: 03/27/02	SCALE: NONE	BOAT MODEL	MOLD NO.
	APPD: K. RANIERI	DATE: 03/27/02	DWG. TITLE:			150SP	
	DESIGN: L. SCHOLZ	DATE: 03/27/02	STEERING SYSTEM INSTALLATION			INIT. REL. ECN NO:	DWG. NO:
	INT. ENG: M. GATICA	DATE: 06/13/05				011003	10401
							1 of 1

THIS DOCUMENT IS THE PROPERTY OF BOSTON WHALER, INC. MFG. DEPT., EDGEWATER, FLORIDA. ALL RIGHTS ARE RESERVED. THIS DOCUMENT AND INFORMATION CONTAINED MUST NOT BE COPIED OR DISCLOSED TO OTHERS WITHOUT WRITTEN PERMISSION OF BOSTON WHALER, INC.

DWG. NO:
07401

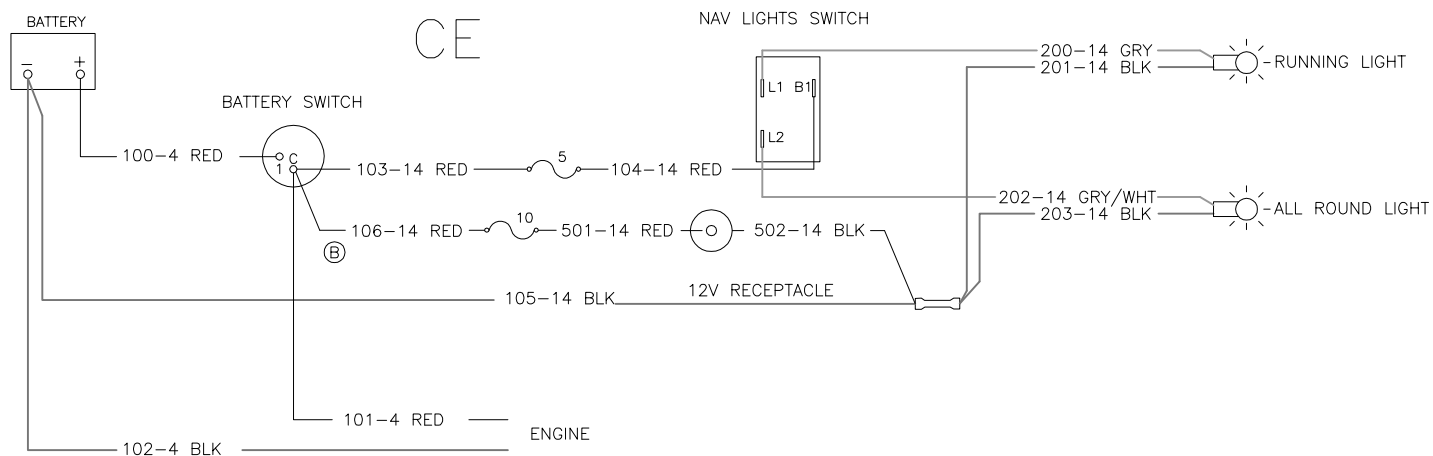
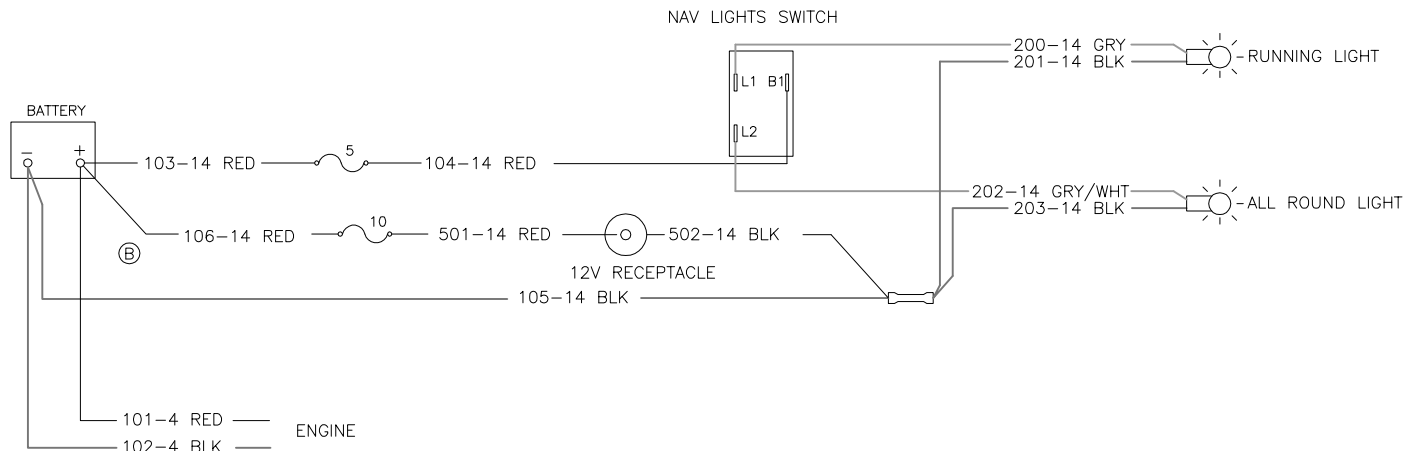
REV.
C

CURRENT ECD
060130

NOTES:

- REF 07-205 FOR HARNESS CONSTRUCTION

REVISIONS					
REV.	DESCR.	BY	DATE	APPVD.	ECN NO.
A	CHANGED NUMBERING SYSTEM/ APPLY ATT. BORDER	AVM	03/10/03	ZAC	030302
B	MYE 06: ADDED 12V RECEPTACLE & FUSE	HJR	05/09/05	MG	050421
C	MODIFY DRAWING BORDER TO AN ATTRIBUTED BORDER	TS	01/23/06	AVM	060130



INTERPRET DIMENSIONS AND TOLERANCES PER ANSI Y 14.5
UNLESS OTHERWISE SPECIFIED DIMENSIONS ARE IN INCHES.
TOLERANCES: ANGLES = ± .5° .XXX = ± .010
.X = ± .1 .XX = ± .03 X = ± 1/16
DO NOT SCALE DRAWING



CHECKED: RA	DATE: 3/25/02	DRAWN: R. CLIFTON	DATE: 03/22/02	SCALE: NONE	BOAT MODEL	MOLD NO.
APPD: R. CLIFTON	DATE: 3/25/02	DWG. TITLE:			150SP	
DESIGN: L. SCHOLZ	DATE: 3/25/02	WIRING DIAGRAM			INIT. REL. ECN NO:	DWG. NO:
INT. ENG: MG	DATE: 5/14/02				010976	07401
					SHT. NO.	
					1	of 1