

THIS DOCUMENT IS THE PROPERTY OF BOSTON WHALER, INC. MFG. DEPT., EDGEWATER, FLORIDA. ALL RIGHTS ARE RESERVED. THIS DOCUMENT AND INFORMATION CONTAINED MUST NOT BE COPIED OR DISCLOSED TO OTHERS WITHOUT WRITTEN PERMISSION OF BOSTON WHALER, INC.

DWG. NO:
09401

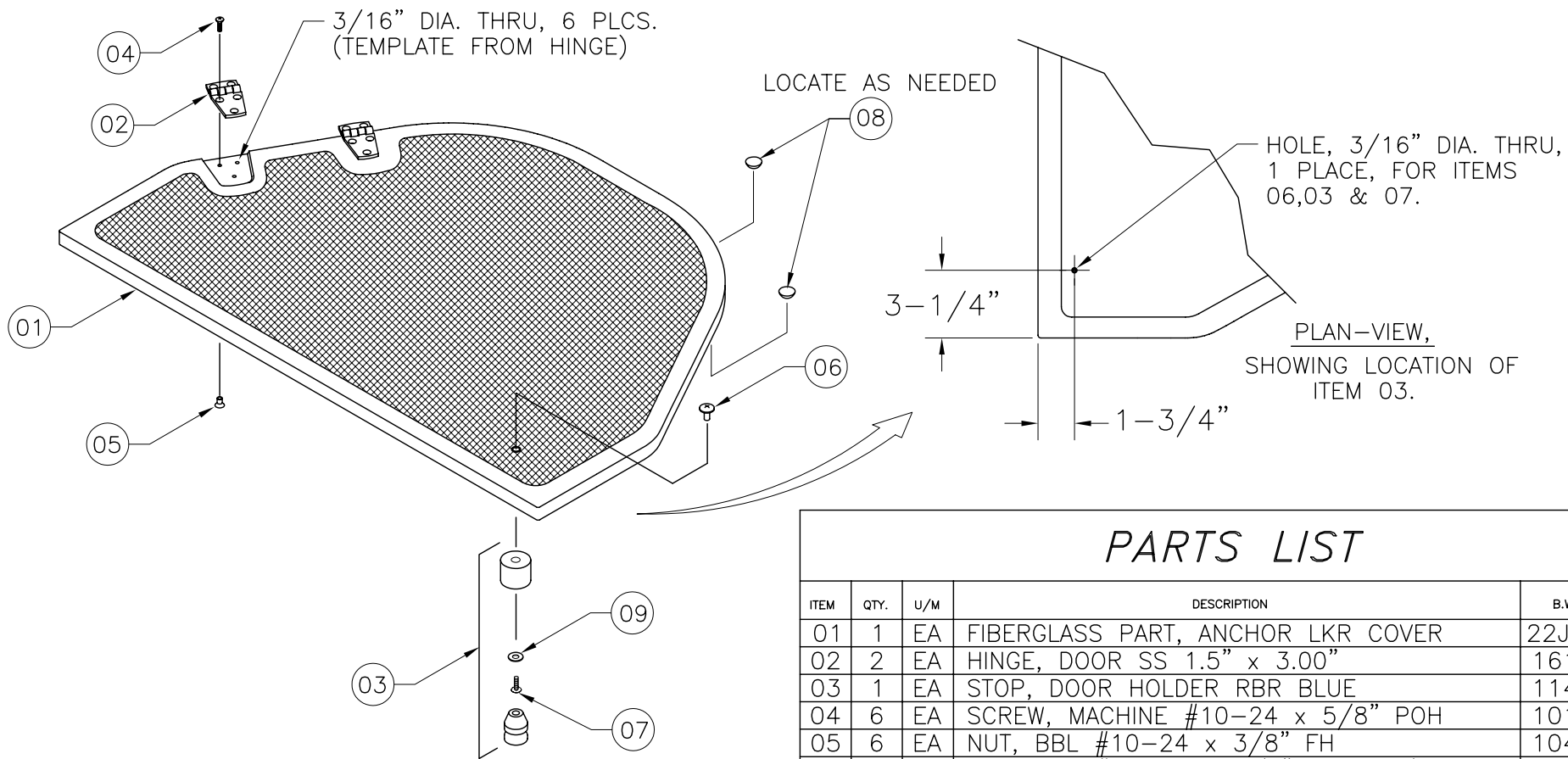
REV.
B

CURRENT ECD
060132

NOTES:

1. PREPARE PART AS INDICATED PRIOR TO COMPONENT ASSEMBLY.
2. APPLY & SMOOTH WHITE SILICONE AT BBL NUT HEADS AFTER INSTALL'N.
3. SECURE FEMALE (BLUE) PORTION OF ITEM 03 TO MALE PORTION. BLUE PORTION WILL BE INSTALLED ON HULL WHEN COVER IS FITTED.

REVISIONS					
REV.	DESCR.	BY	DATE	APPVD.	ECN NO.
A	CHANGED NUMBERING SYSTEM/ APPLY ATT BORDER	AVM	06/16/03	-	030307
B	MODIFY DRAWING BORDER TO AN ATTRIBUTED BORDER	TS	01/24/06	AVM	060132



PARTS LIST

ITEM	QTY.	U/M	DESCRIPTION	B.W.I. NO.
01	1	EA	FIBERGLASS PART, ANCHOR LKR COVER	22J72800
02	2	EA	HINGE, DOOR SS 1.5" x 3.00"	1617323
03	1	EA	STOP, DOOR HOLDER RBR BLUE	1142348
04	6	EA	SCREW, MACHINE #10-24 x 5/8" POH	1010545
05	6	EA	NUT, BBL #10-24 x 3/8" FH	1040187
06	1	EA	NUT, BBL #10-24 X 3/8" TH CHR/BR	1040211
07	1	EA	SCREW, MACHINE #10-24 X 3/4" POH SC	1008440
08	2	EA	BUMPER, SELF-ADH CLR	1035666
09	1	EA	WASHER, FLAT #10 SC	1260751

INTERPRET DIMENSIONS AND TOLERANCES PER ANSI Y 14.5
UNLESS OTHERWISE SPECIFIED DIMENSIONS ARE IN INCHES.
TOLERANCES: ANGLES = ± .5° .XXX = ± .010
.X = ± .1 .XX = ± .03 X = ± 1/16
DO NOT SCALE DRAWING



CHECKED: RA	DATE: 06/27/05	DRAWN: R LEE	DATE: 06/23/03	SCALE: NONE	BOAT MODEL 160DA	MOLD NO.
APPD: KR	DATE: 06/27/05	DWG. TITLE: ANCHOR LOCKER COVER SUB ASSEMBLY			INIT. REL. ECN NO: 030337	DWG. NO: 09401
DESIGN: VK	DATE: 06/27/05				SHT. NO. 1 OF 1	
INT. ENG: MG	DATE: 06/27/05					

THIS DOCUMENT IS THE PROPERTY OF BOSTON WHALER, INC. MFG. DEPT., EDGEWATER, FLORIDA. ALL RIGHTS ARE RESERVED. THIS DOCUMENT AND INFORMATION CONTAINED MUST NOT BE COPIED OR DISCLOSED TO OTHERS WITHOUT WRITTEN PERMISSION OF BOSTON WHALER, INC.

DWG. NO: **08401** REV. **C** CURRENT ECD **060415**

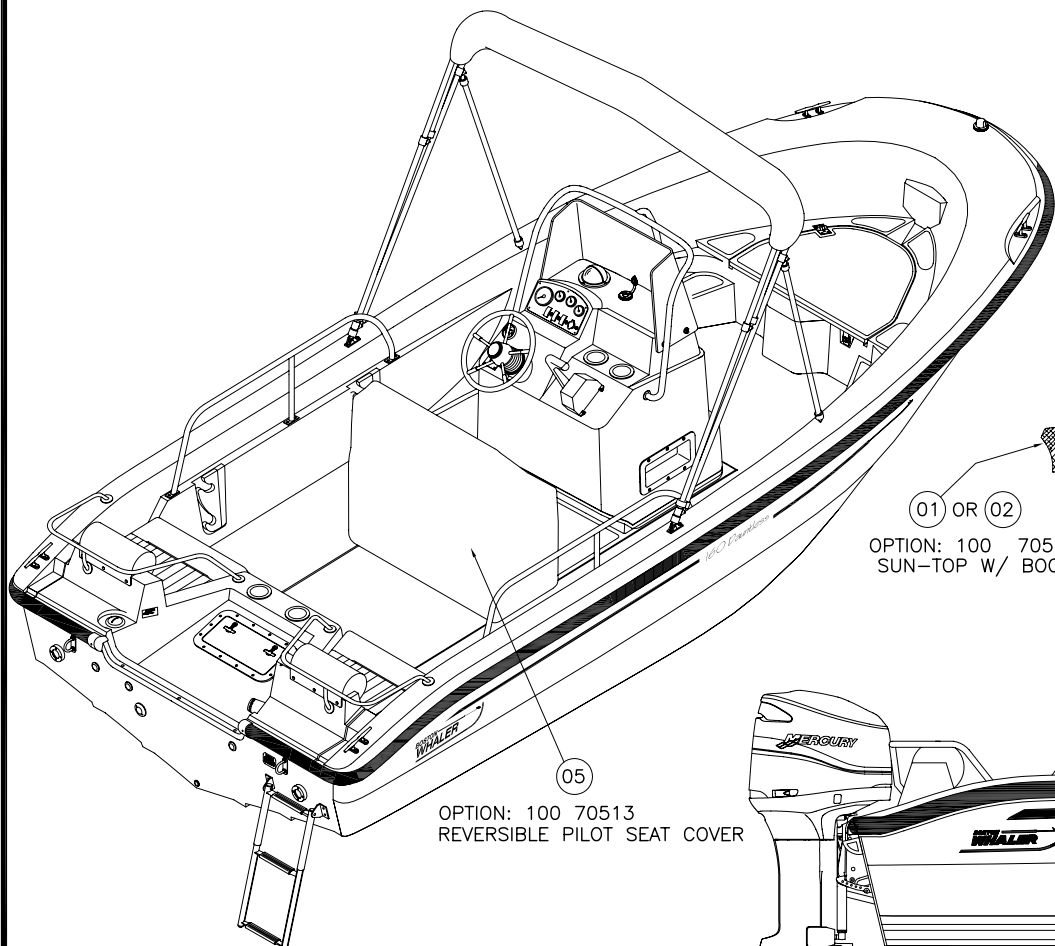
NOTES:

1. THE BIMINI TOP SHALL BE INSTALLED IN ACCORDANCE WITH THE MANUFACTURERS' INSTRUCTION SET, PROVIDED WITH THE CANVAS.
2. ALL FASTENERS INTO BOAT SHALL BE SEALED USING MARINE GRADE SILICONE SEALANT.

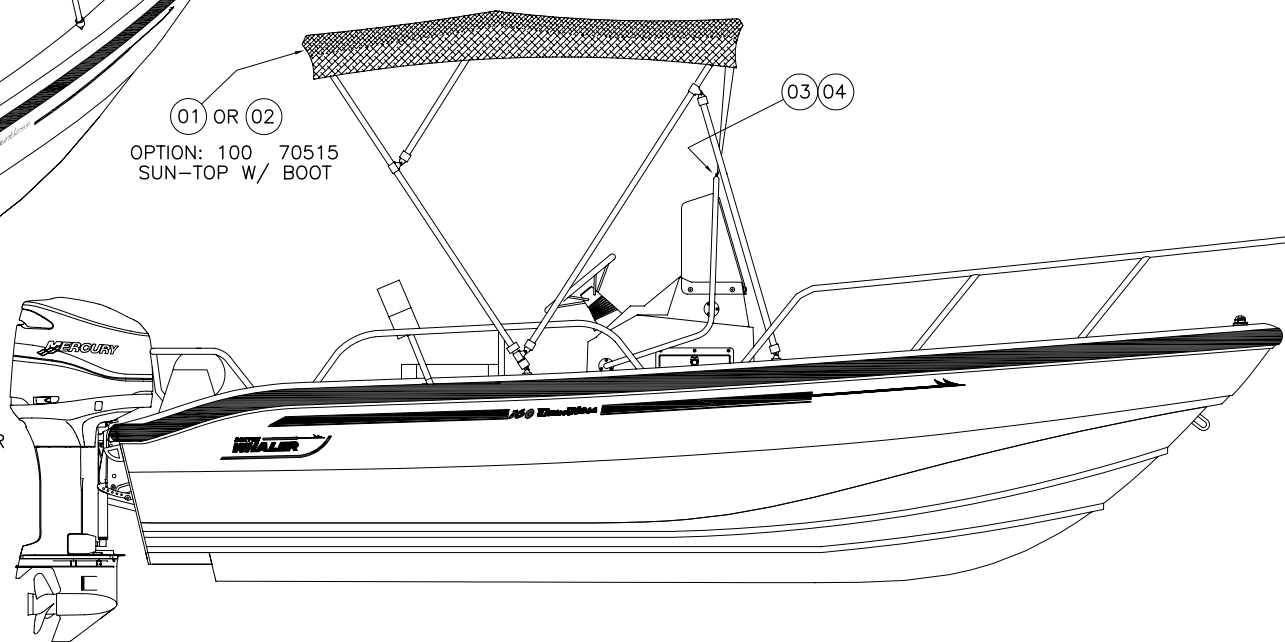
REVISIONS					
REV.	DESCR.	BY	DATE	APPVD.	ECN NO.
A	CHANGED NUMBERING SYSTEM/ APPLY ATT BORDER.	AVM	06/17/03	-	030307
B	MODIFY DRAWING BORDER TO AN ATTRIBUTED BORDER	TS	01/24/06	AVM	060132
C	MYE 07' ADDED 06 THRU 09	HJR	04/17/06	MG	060415

PARTS LIST

ITEM	QTY.	U/M	DESCRIPTION	BWI NO.
	STD.	OPT.		
01	-	1	EA. CANVAS, BW160DA-04 BIM TOP W/BOOT BLK	1753166
02	-	1	EA. CANVAS, BW160DA-04 BIM TOP W/BOOT BLUE	1753165
03	-	1	EA. EYE, STRAP EYE TIE-DOWN 5/16" CHR/ZINC	0861120
04	-	2	EA. SCREW, MACHINE #10-24 X 5/8" POH SC	1010545
05	-	1	EA. CANVAS, BW14/160DA-00 REV'BL SEAT CVR GRY	1331545
© 06	-	1	EA. CANVAS, BW17MTK-05 CNSL CVR BLK	1771130
© 07	-	1	EA. CANVAS, BW17MTK-05 CNSL CVR BLUE	1771131
© 08	-	1	EA. CANVAS, BW17MTK-05 CNSL CVR W/COOLR CUTOUT BLK	1776599
© 09	-	1	EA. CANVAS, BW17MTK-05 CNSL CVR W/COOLR CUTOUT BLU	1776601



© 06 © 07 © 08 © 09 OPTIONS NOT SHOWN



INTERPRET DIMENSIONS AND TOLERANCES PER ANSI Y 14.5 UNLESS OTHERWISE SPECIFIED DIMENSIONS ARE IN INCHES.
 TOLERANCES: ANGLES = ± .5° .XXX = ± .010
 .X = ± .1 X = ± 1/16
 .XX = ± .03 X = ± 1/16
 DO NOT SCALE DRAWING



CHECKED: RA	DATE: 06/27/05	DRAWN: R DURHAM	DATE: 05/22/03	SCALE: NONE	BOAT MODEL	MOLD NO.
APPD: KR	DATE: 06/27/05	DWG. TITLE:			160DA	
DESIGN: VK	DATE: 06/27/05	CANVAS INSTALLATION			INIT. REL. ECN NO:	DWG. NO:
INT. ENG: MG	DATE: 06/27/05				030337	08401
					SHT. NO.	
					1	OF 1

THIS DOCUMENT IS THE PROPERTY OF BOSTON WHALER, INC. MFG. DEPT., EDGEWATER, FLORIDA. ALL RIGHTS ARE RESERVED. THIS DOCUMENT AND INFORMATION CONTAINED MUST NOT BE COPIED OR DISCLOSED TO OTHERS WITHOUT WRITTEN PERMISSION OF BOSTON WHALER, INC.

DWG. NO:
09200

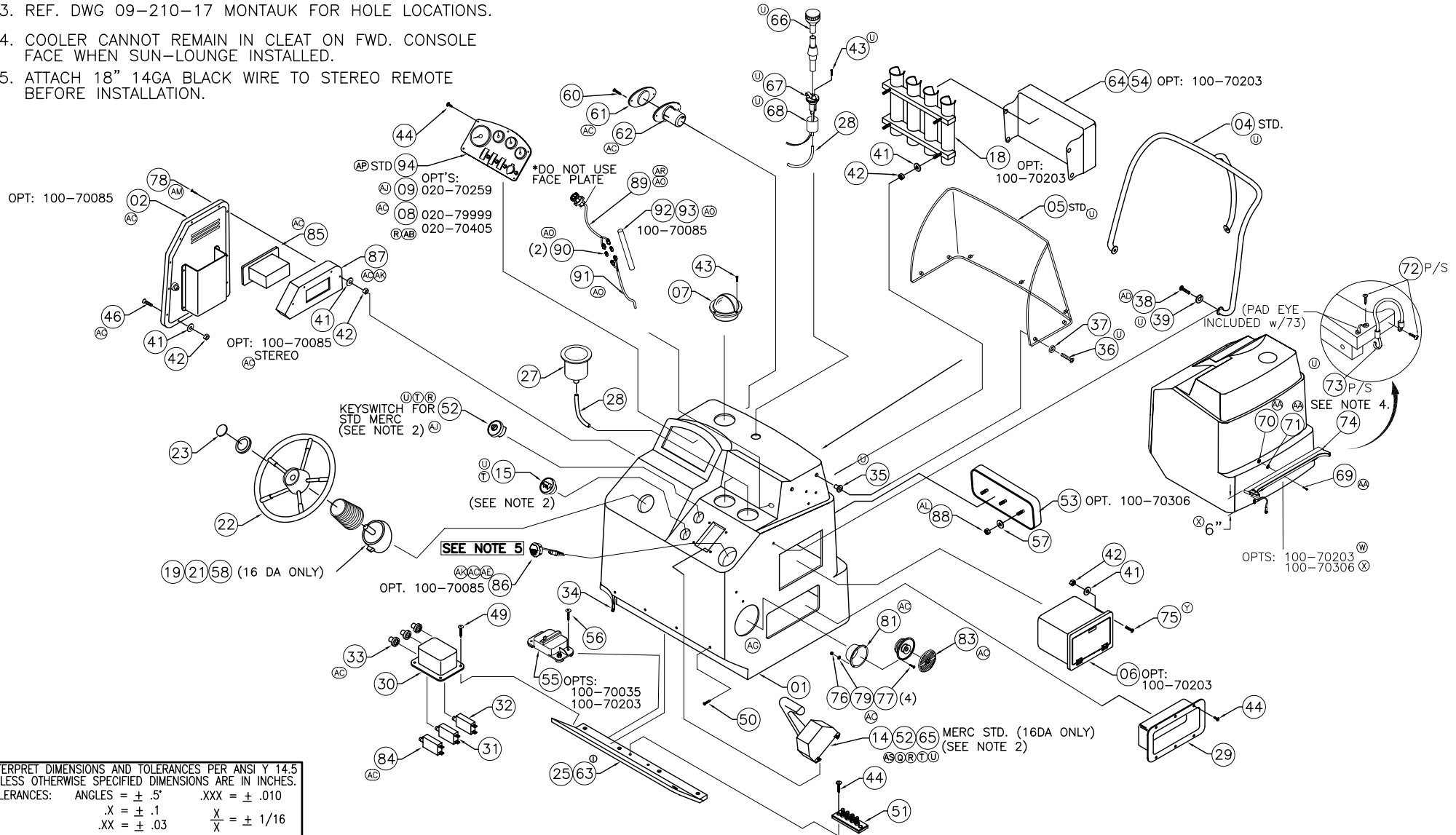
REV.
AS

CURRENT ECD
0605109

NOTES:

1. FIXTURE NO. 16-22 SHALL BE USED TO LOCATE ALL CUTOUTS & COMPONENTS.
2. DELETE W/OPT 020-79999 & 020-70405 DRILL WHEN OPT 020-79999 W/100-70005 OR 020-70405 W/100-70005 ARE ORDERED
3. REF. DWG 09-210-17 MONTAUK FOR HOLE LOCATIONS.
4. COOLER CANNOT REMAIN IN CLEAT ON FWD. CONSOLE FACE WHEN SUN-LOUNGE INSTALLED.
5. ATTACH 18" 14GA BLACK WIRE TO STEREO REMOTE BEFORE INSTALLATION.

REVISIONS					
REV.	DESCR.	BY	DATE	APPVD.	ECN NO.
AQ	#88 WAS 1007764	SWH	05/26/06	AVM	0604144
AR	MYE '07- #89 WAS 1803674	SWH	06/15/06	MG	060393
AS	MYE '07- ITEM 14 WAS 1753760, DELETE #13	AT	06/20/06	MG	0605109



INTERPRET DIMENSIONS AND TOLERANCES PER ANSI Y 14.5 UNLESS OTHERWISE SPECIFIED DIMENSIONS ARE IN INCHES.
 TOLERANCES: ANGLES = ± .5° .XXX = ± .010
 .X = ± .1 X = ± 1/16
 .XX = ± .03
 DO NOT SCALE DRAWING



CHECKED: S. WOOD	DATE: 12/14/98	DRAWN: R. DURHAM	DATE: 12/14/98	SCALE: NONE	BOAT MODEL	MOLD NO.
APPD: M. MITCHELL	DATE: 12/14/98	DWG. TITLE:			160DA	18J90204
DESIGN: S. WOOD	DATE: 12/14/98	CONSOLE ASSEMBLY			INIT. REL. ECN NO:	DWG. NO:
INT. ENG: L. SCHOLZ	DATE: 12/14/98					09200
						1 OF 3


THIS DOCUMENT IS THE PROPERTY OF BOSTON WHALER, INC. MFG. DEPT. EDgewater, Florida. ALL RIGHTS ARE RESERVED. THIS DOCUMENT AND INFORMATION CONTAINED MUST NOT BE COPIED OR DISCLOSED TO OTHERS WITHOUT WRITTEN PERMISSION OF BOSTON WHALER, INC.

DWG. NO. **09200** REV. **AS** CURRENT ECD **0605109**

NOTES:

- (L)
- (AI) (AC) (P)
- (A1) (U)
- (U) (J)
- (Y) (S)
- (AF) (P)
- (AB) (P)
- (AJ) (AB) (P)
- (J)
- (J)
- (J)
- (AS) (AH) (U) (B)
- (AS) (Z) (U) (F)
- (J)
- (M)
- (AC) (G)
- (O) (J)
- (J)
- (N)
- (P)
- (P)
- (AC)
- (U)
- (AD)
- (U)
- (M)
- (M)
- (U)
- (A2)

BILL OF MATERIAL				
ITEM	STD. QTY.	U/M	DESCRIPTION	B.W.I. NO.
01	1	EA	FIBERGLASS PART, CONSOLE 160DA-99	22-J871-00
02	1	EA	DOOR, HDPE BW160DA/17MTK-06 CNSL	1803646
03	1	EA	RAIL, GRAB LO-PATT CONSOLE	1249275
04	1	EA	RAIL, GRAB BW170MT-02 CNSL SS	1689427
05	1	EA	W/S, BW170MT-02 CNSL CLEAR	1689418
06	1	EA	BOX, PLAS BW-04 TACKLE 2-DRWR WHT	1761591
07	1	EA	COMPASS, FLSHMT 3 7/8" BLK WT HSE/GREEN LT	1791615
08	1	EA	PANEL, BLANK: BW160DA-05 W/SWITCH	1772709
09	1	EA	PANEL, BW160DA-06 INST MERC ANALOG W/STITCHES	1804322
10	1	EA	LABEL, BW DC MAIN BREAKER	1075282
11	1	EA	LABEL, BILGE (LEXAN)	756866
12	1	EA	LABEL, BW SAFETY HI-PERF BOAT	1017136
13	1	EA	CABLE, CNTRL MERC GEN II PREMIUM 14'	1804039
14	2	EA	CABLE, CONTROL MERC GEN II PLAT 14'	1759687
15	1	EA	ACC PART, MERC SW (SAFETY ASSY)	0882605
16	1	EA	LABEL, BW WARNING FUEL GAUGE READ	1016534
17	1	EA	LIGHT, NAV A/R STERN 45"W/BEND	1388693
18	1	EA	ROD-HOLDER, 4-ROD ASSY., SEAFOAM	1068600
19	1	EA	STEERING, PERFORMANCE TILT MECHANISM	0662510
20	1	EA	STEERING, CABLE NFB W/ENDS 12'	0997098
21	1	EA	STEERING, HELM PERFORMANCE NFB TILT	0997213
22	1	EA	STEERING WHEEL, 14" 5-SPOKE SS 22DEG BLK GRIP	1716617
23	1	EA	EMBLEM, BW STEERING WHEEL CAP	1021054
24	1	EA	LABEL, BW STEERING PULL WARNING	1016518
25	1	EA	PANEL, HDPE CLOSEOUT CONSOLE	1193093
26	1	EA	DRAIN, 1" IMPACT W/O BARB BLK	1041953
27	2	EA	DRINKHOLDR, PLAS W/DRAIN DEEP XLG SZ BLK	1727419
28	6	FT	HOSE, PVC CLEAR 3/8"	124347
29	1	EA	BOX, ABS FIRE EXT SHORT WHT	1037555
30	1	EA	BOX, ABS HARNESS	1037530
31	1	EA	BRKR/SWITCH, PUSH BUTTON 30A ETA	0365775
32	1	EA	BRKR, MANUAL RESET 5A	670497
33	3	EA	BOOT, RESET BRKR CLEAR	1066547
34	13	FT	TRIM, EDGE WHITE FLEX 'L'-TRIM	1020924
35	7	EA	NUT, WELL	1033422
36	7	EA	SCREW, MACHINE #10-32 x 1-1/4" PFH	1010107
37	7	EA	WASHER, FINISH #10 SS	0896258
38	3	EA	SCREW, CAP #5/16-18 X 1.25" HEX HD SC	1742748
39	3	EA	WASHER, LOCK/SPLIT 5/16" SC	1260611
40	12	EA	SCREW, MACHINE 1/4-20 x 1.25" PPH	0151746
41	21	EA	WASHER, FLAT #10 SS	0152918
42	21	EA	NUT, HEX NYLON LOCK #10-24	1007772
43	6	EA	SCREW, TAPPING #6A X 3/4" POH SC	1008564
44	14	EA	SCREW, TAPPING #8 x 5/8" PTH	1010925
45	X	EA	SCREW, TAPPING #10 x 1" POH	1008507

 <p>BOSTON WHALER PRODUCT DEV. & MFG. ENGINEERING GROUP</p>	DRAWN: R DURHAM DWG. TITLE: CONSOLE ASSEMBLY	DATE: 12/14/98 SCALE: NONE	BOAT MODEL: 160DA MOLD NO.: 18J90204
	INTERPRET DIMENSIONS AND TOLERANCES PER ANSI Y 14.5 UNLESS OTHERWISE SPECIFIED DIMENSIONS ARE IN INCHES. TOLERANCES: ANGLES = ± .5° .XXX = ± .010 .X = ± .1 X = ± 1/16 .XX = ± .03 Y = ± 1/16 DO NOT SCALE DRAWING	INIT. REL. ECN NO.: DWG. NO.: 09200	SHT. NO.: 2 of 3

THIS DOCUMENT IS THE PROPERTY OF BOSTON WHALER, INC. MFG. DEPT. EDGEWATER, FLORIDA. ALL RIGHTS ARE RESERVED. THIS DOCUMENT AND INFORMATION CONTAINED MUST NOT BE COPIED OR DISCLOSED TO OTHERS WITHOUT WRITTEN PERMISSION OF BOSTON WHALER, INC.

DWG. NO:
09200

REV.
AS

CURRENT ECD
0605109

- (AC) (Y) (M)
- (AJ) (B)
- (AL) (C)
- (AL) (C)
- (K)
- (AL)
- (F)
- (J)
- (AC) (J) (H)
- (AC) (J)
- (I)
- (AL) (J)
- (Q)
- (U)
- (AA)
- (AA)
- (AA)
- (W)
- (U)
- (Y)
- (AC)
- (AC)
- (AM) (AC)
- (AC)
- (AC)
- (AC)
- (AC)
- (AC)
- (AC)
- (AC)
- (AK) (AC)
- (AK) (AC)
- (AK) (AI) (AC)
- (AQ) (AL)
- (AR) (AO)
- (AO)
- (AO)
- (AO)
- (AO)
- (AP)

BILL OF MATERIAL				
ITEM	QTY.	U/M	DESCRIPTION	B.W.I. NO.
46	12	EA	SCREW, MACHINE #10-24 x 1.25" POH	1008424
47	1	EA	DECAL, BW TUNA FIRE RED	0998831
48	1	EA	DECAL, BW DAUNTLESS DK GRAY HIBOSC	1030683
49	4	EA	SCREW, TAPPING #8 x 1/2" PTH	1008812
50	4	EA	SCREW, TAPPING #8 x 3/4" PFH	1008408
51	1	EA	BUSS BAR, BONDING SYSTEM	1031798
52	1	EA	SWITCH, IGN ASSY 4-POSITION W/HOUSING	1801954
53	1	EA.	CUSH, BW160DA-05 B/R CNSL WHT/GRY	1781459
54	4	EA.	SNAP STUD W/ #8 x 3/8" PH	0203786
55	1	EA.	BRKR, SURF MNT THERMAL 50AMP SWITCHABLE	1475441
56	2	EA.	SCREW, TAPPING #10A X 3/4" PPH SC	1172030
57	3	EA.	WASHER, FLAT #1/4" SC	1260769
58	1	EA.	STEERING, CABLE NFB W/ENDS 14'	704239
59	2	EA.	CABLE, CONTROL MERCURY 13'	0171116
60	2	EA	SCREW, TAPPING #6A x 5/8" POH SC	1008572
61	1	EA	HORN, GRILL SGL SS OVERLAY SERIES 84400-1	1781252
62	1	EA	HORN, SGL BLK NO CONN SERIES 84400-1	1780938
63	1	EA	PANEL, HDPE BW140/160DA-00 CLSOUT	1474923
64	1	EA	CUSH, BW160DA-05 CNSL ROD HLDR WHT	1781452
65	4	EA	SCREW, TAPPING #10 X 1" PTH	1008739
66	1	EA	LIGHT, NAV A/R STERN 52"N/BEND	0574400
67	1	EA	LIGHT, NAV STERN BASE RND CHR	0331751
68	1	EA	CAP, DRAINBOOT STERN LIGHT MAST BLK	1042761
69	4	EA	SCREW, MACHINE #10-24 X 1.75" PTH SC	1341973
70	4	EA	NUT, HEX NYLON LOCK #10-24 SC	1007772
71	4	EA.	WASHER, FLAT #10 SC	1260751
72	6	EA.	SCREW, TAPPING #8A X 5/8" PTH SC	1010925
73	2	EA.	STRAP, COOLER TAMER 7" CNSL MNT	1741035
74	1	EA.	HOLDER, HDPE BW160DA-04 COOLER	1755969
75	6	EA.	SCREW, MACHINE #10-24 X 3/4" PTH SC	1008705
76	8	EA.	NUT, LOCK 6-32 SC	1009810
77	8	EA.	SCREW, MACHINE #6-32 X 1" PFH SC	1010172
78	4	EA.	SCREW, MACHINE #10-24 X 4" POH SC	1812435
79	8	EA.	WASHER, FLAT #6 SC	1326222
80	1	EA.	ANTENNA LEAD, STEREO SOFT WIRE 30"	0875484
81	2	EA.	COVER, ABS BW-97 SPKR 7 1/8"RAD WHT	1047836
82	1	EA.	LABEL, BW STEREO	1075266
83	2	EA.	SPEAKER, COAXIAL 6.5" W/WHT CVR	1690555
84	1	EA.	BRKR, MANUAL RESET 15A	1750593
85	1	EA.	STEREO, AM/FM CD W/CHNGR/SIR SAT PLAYER CMD4	1803464
86	1	EA.	STEREO, REMOTE CNTRL W/DIG DSPLY FOR CMD4 BLK	1803894
87	1	EA.	PANEL, HDPE BW160DA/17MTK-06 CLOSEOUT STEREO	1803648
88	4	EA.	NUT, LOCK #1/4-20 SC STD PATT	1009786
89	1	EA.	VIDEO EQUIPMENT, AUXILIARY INPUT MA-AUX2	1849383
90	2	EA.	ADAPTER, STEREO FEMALE/FEMALE	0956078
91	1	EA.	CABLE, RCA AUDIO 6' W/EFX-2 CONN W/NOISE SUPP	1750880
92	1	EA.	HEAT SHRINK, TUBING RED 3/4"X 6"	1042274
93	1	EA.	HEAT SHRINK, TUBING BLK 3/4"X 6"	0999839
94	1	EA.	PANEL, BW160DA-07 MERC ANALOG W/SW	1837737

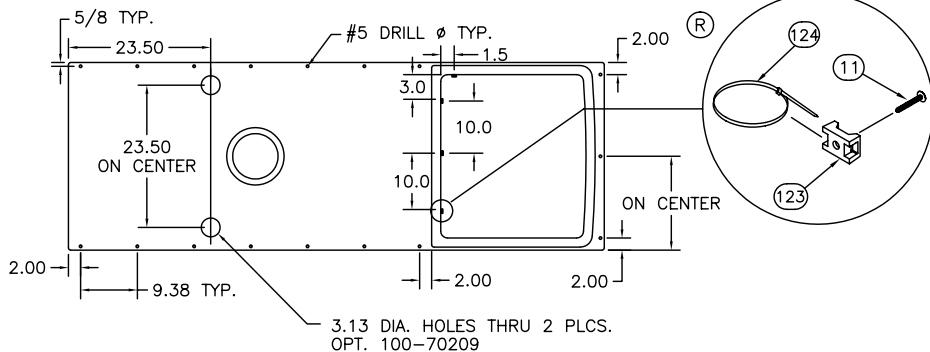
<p>INTERPRET DIMENSIONS AND TOLERANCES PER ANSI Y 14.5 UNLESS OTHERWISE SPECIFIED DIMENSIONS ARE IN INCHES.</p> <p>TOLERANCES: ANGLES = ± .5° .X = ± .1 .XX = ± .03 X / Y = ± 1/16 DO NOT SCALE DRAWING</p>	<p>DRAWN: R DURHAM</p> <p>DWG. TITLE: CONSOLE ASSEMBLY</p>	<p>DATE: 12/14/98</p> <p>SCALE: NONE</p>	<p>BOAT MODEL 160DA</p> <p>MOLD NO. 18J90204</p> <p>INIT. REL. ECN NO. 09200</p>
<p>BOSTON WHALER PRODUCT DEV. & MFG. ENGINEERING GROUP</p>			<p>SHT. NO. 3</p> <p>of 3</p>

THIS DOCUMENT IS THE PROPERTY OF BOSTON WHALER, INC. MFG. DEPT., EDGEWATER, FLORIDA. ALL RIGHTS ARE RESERVED. THIS DOCUMENT AND INFORMATION CONTAINED MUST NOT BE COPIED OR DISCLOSED TO OTHERS WITHOUT WRITTEN PERMISSION OF BOSTON WHALER, INC.

DWG. NO: 06100
 REV. AB
 CURRENT ECD 0604144

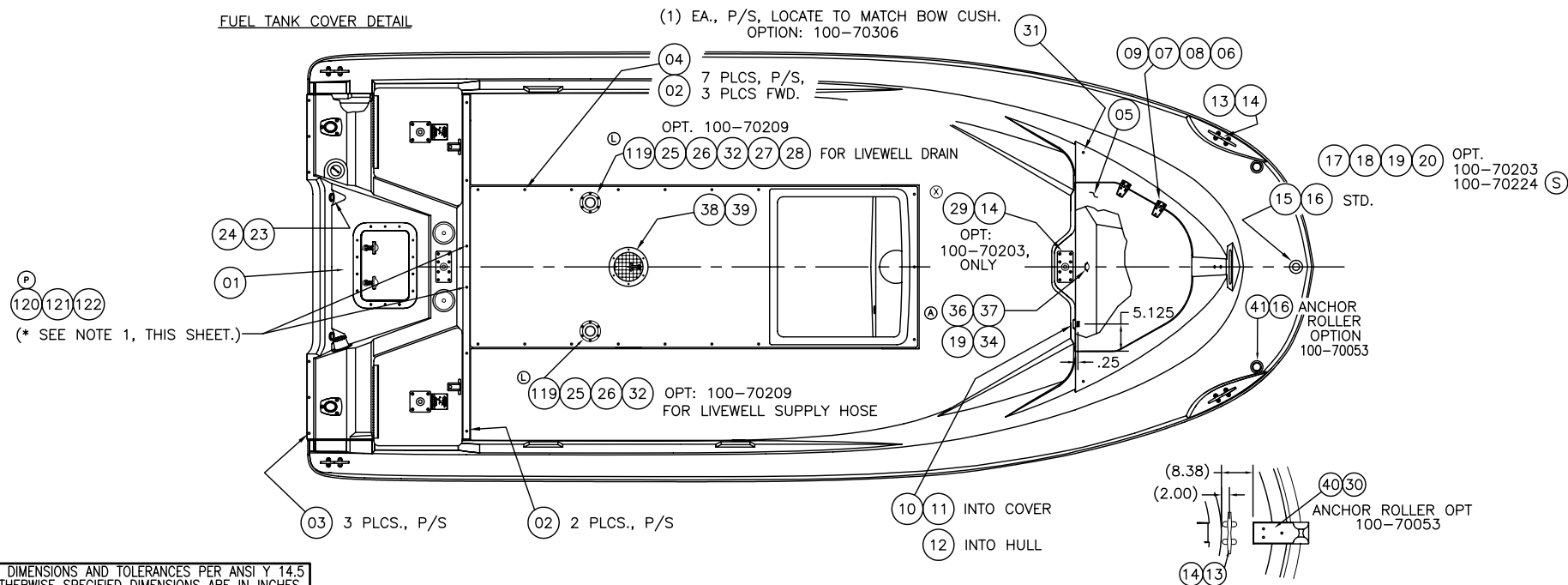
1. USE #5 HOLES IN STERNECK TO DRILL 1/4" HOLES THROUGH STERN DECK & TANK COVER FOR THRU BOLTS.

REVISIONS					
REV.	DESCR.	BY	DATE	APPVD.	ECN NO.
T	2004 MODEL YEAR ENHANCEMENTS, ADDED PGS. 4,5	RC	05/22/03	RA	03-03-37
U	Changed Numbering System/Apply Att.Border.	AVM	06/16/03	ZAC	03-03-07
V	DELETED ITEMS #93 & #94, SHEETS 3 & 5	SLJ	07/15/03	ZAC	03-07-16
W	MOVE #10 & #11 FROM 5" TO 5.125"	HJR	03/04/04	ZAC	04-01-70
X	05' MYE #29 WAS 1076967, #14 WAS QTY 16.	HJR	04/27/04	SH	04-01-39
Y	SNAP #31 QTY 46 WAS 22, SHEETS 2 & 5; DELETED OPT100-70224, SHEET 3; CHANGED P/N'S OF #S 48-50, 53, 74,95 & 104: 1781457 WAS 1171529, 1781458 WAS 1171586, 1781455 WAS 1171545, 1781456 WAS 1175678, 1781443 WAS 1006675, 1781441 WAS 1006725, 1781451 WAS 1324730; ITEM #55: 09250160DA WAS 18J90205.	SL	07/19/05	ME	04-06-35
Z	CHANGED PN# & DESCRIPTION ITEM 82, SHEETS 3 & 5	SLJ	09/15/05		05-09-06
AA	ADDED IPS ITEM #S 128 & 129; ADDED SHEET FOR IPS DETAIL (SHOWN ON SHEET 4)	SL	09/28/05	ME	05-09-03
AB	#117 WAS 1007764	SWH	05/26/06	AVM	0604144



FUEL TANK COVER DETAIL

(1) EA., P/S, LOCATE TO MATCH BOW CUSH.
 OPTION: 100-70306



INTERPRET DIMENSIONS AND TOLERANCES PER ANSI Y 14.5 UNLESS OTHERWISE SPECIFIED DIMENSIONS ARE IN INCHES.
 TOLERANCES: ANGLES = ± .5° .XXX = ± .010
 .X = ± .1 .XX = ± .03 X = ± 1/16
 DO NOT SCALE DRAWING



CHECKED: D. MIELKE	DATE: 9/25/98	DRAWN: R DURHAM	DATE: 09/25/98	SCALE: NONE	BOAT MODEL	MOLD NO.	
APPD: S. WOOD	DATE: 9/25/98	DWG. TITLE:		160DA	18J88501		
DESIGN: D. MIELKE	DATE: 9/25/98	DECK HARDWARE			INIT. REL. ECN NO:	DWG. NO:	SHT. NO.
INT. ENG: M. MITCHELL	DATE: 03/02/01				R9000	06100	1 of 6

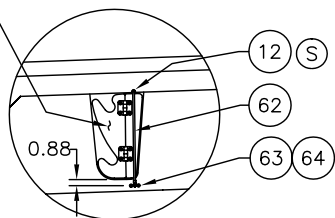
THIS DOCUMENT IS THE PROPERTY OF BOSTON WHALER, INC. MFG. DEPT., EDGEWATER, FLORIDA. ALL RIGHTS ARE RESERVED. THIS DOCUMENT AND INFORMATION CONTAINED MUST NOT BE COPIED OR DISCLOSED TO OTHERS WITHOUT WRITTEN PERMISSION OF BOSTON WHALER, INC.

DWG. NO:
06100

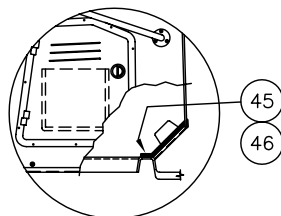
REV.
AB

CURRENT ECD
0604144

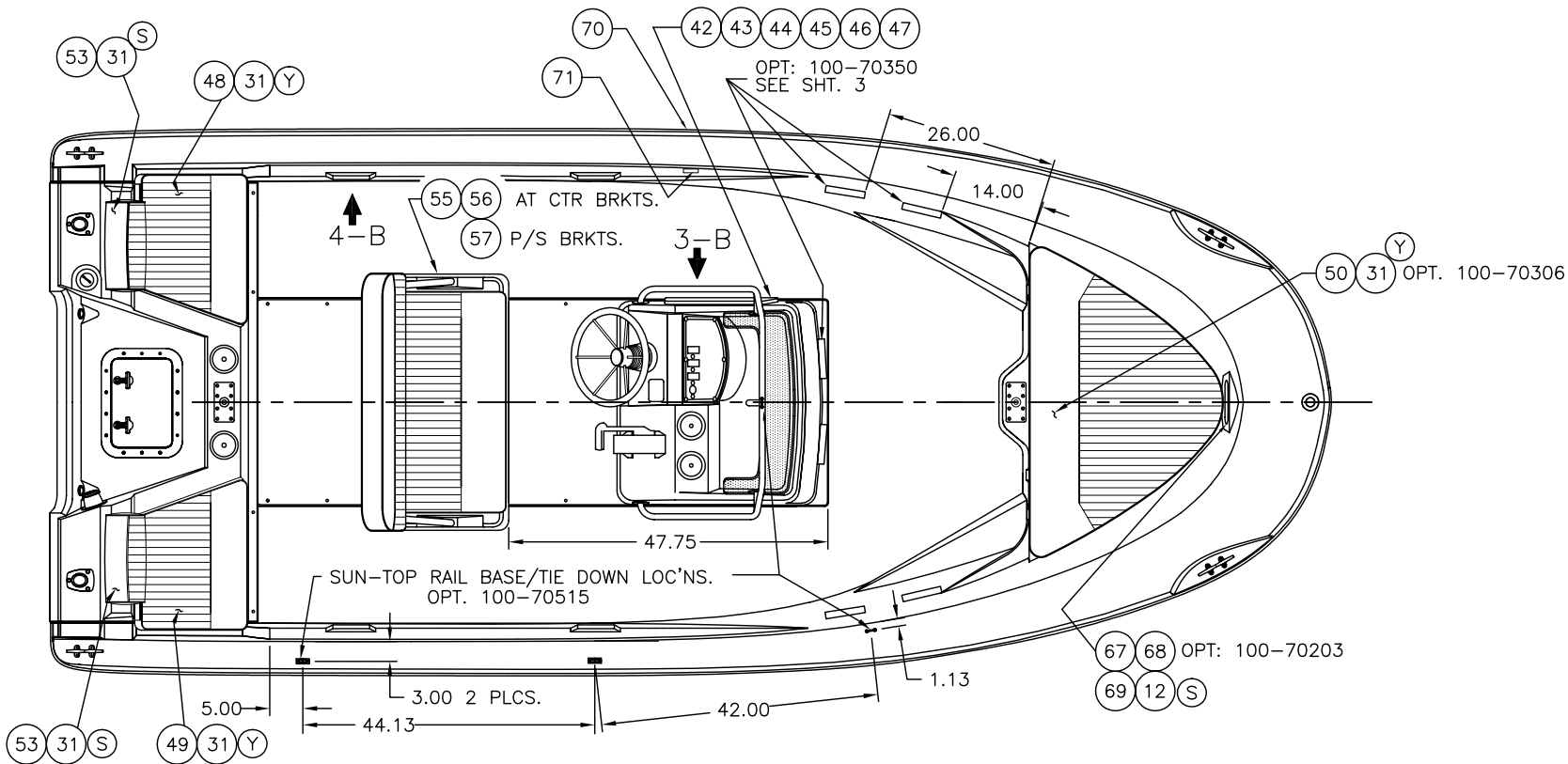
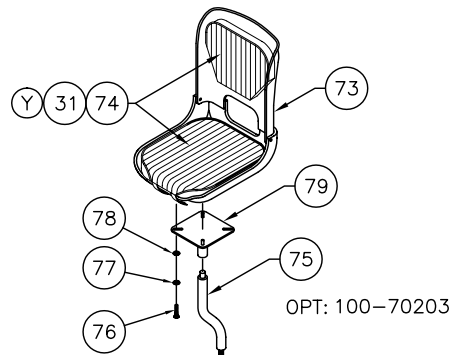
(58) (59) (62) (66) STD.



VIEW 4-B



VIEW 3-B



INTERPRET DIMENSIONS AND TOLERANCES PER ANSI Y 14.5 UNLESS OTHERWISE SPECIFIED DIMENSIONS ARE IN INCHES.
TOLERANCES: ANGLES = ± .5° .XXX = ± .010
.X = ± .1 X = ± 1/16
.XX = ± .03
DO NOT SCALE DRAWING

DRAWN: R DURHAM DATE: 09/25/98 SCALE: NONE
DWG. TITLE: DECK HARDWARE

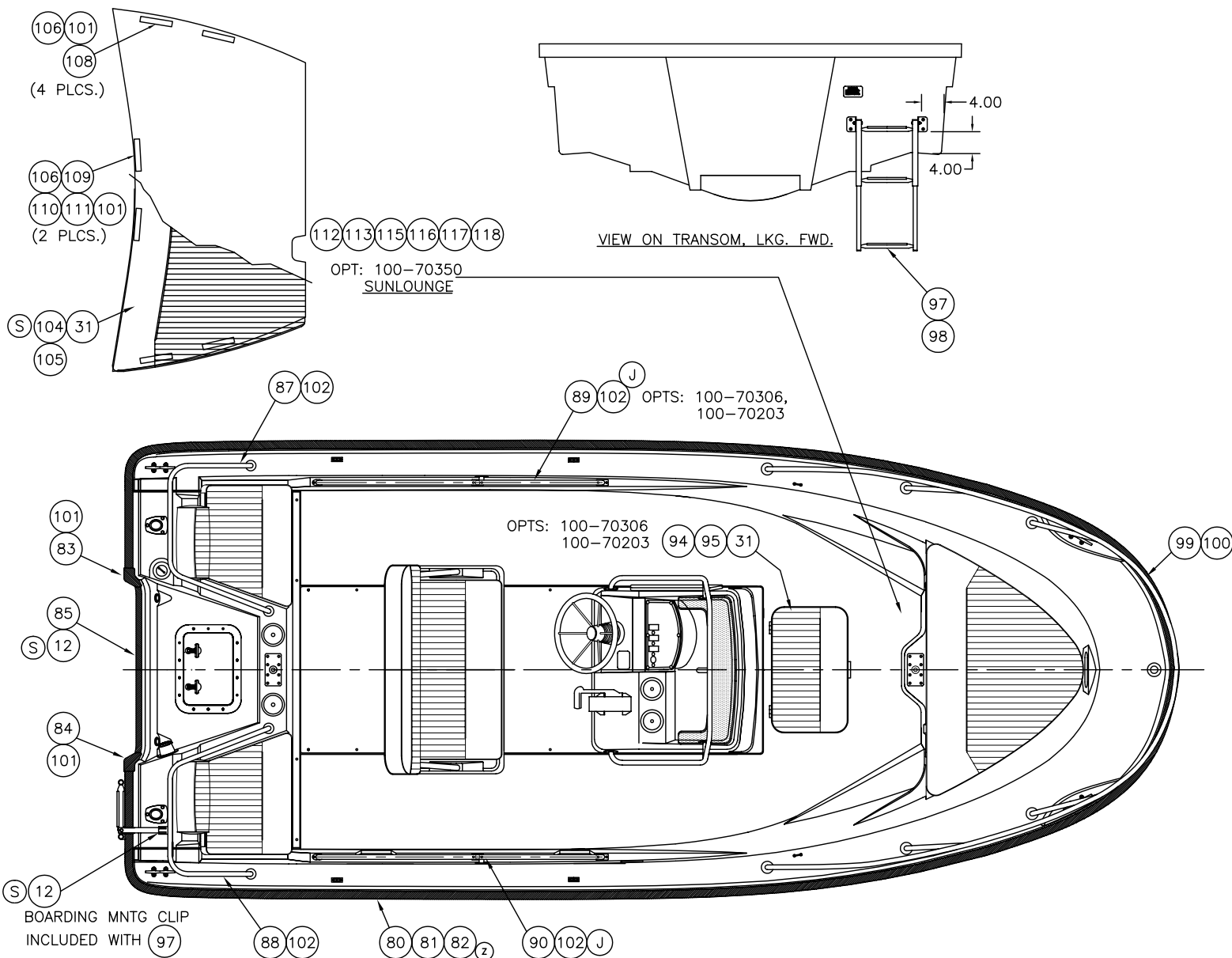
BOAT MODEL 160DA	MOLD NO. 18J88501
INIT. REL. ECN NO: R9000	SHT. NO. 2 OF 6
DWG. NO: 06100	

THIS DOCUMENT IS THE PROPERTY OF BOSTON WHALER, INC. MFG. DEPT., EDGEWATER, FLORIDA. ALL RIGHTS ARE RESERVED. THIS DOCUMENT AND INFORMATION CONTAINED MUST NOT BE COPIED OR DISCLOSED TO OTHERS WITHOUT WRITTEN PERMISSION OF BOSTON WHALER, INC.

DWG. NO:
06100

REV.
AB

CURRENT ECD
0604144

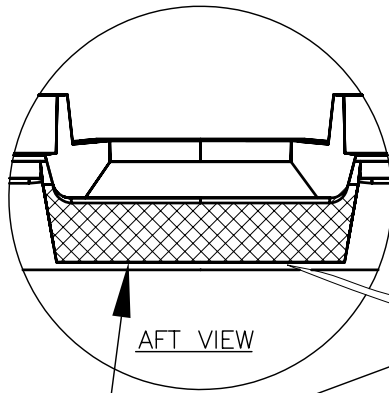


THIS DOCUMENT IS THE PROPERTY OF BOSTON WHALER, INC. MFG. DEPT., EDGEWATER, FLORIDA. ALL RIGHTS ARE RESERVED. THIS DOCUMENT AND INFORMATION CONTAINED MUST NOT BE COPIED OR DISCLOSED TO OTHERS WITHOUT WRITTEN PERMISSION OF BOSTON WHALER, INC.

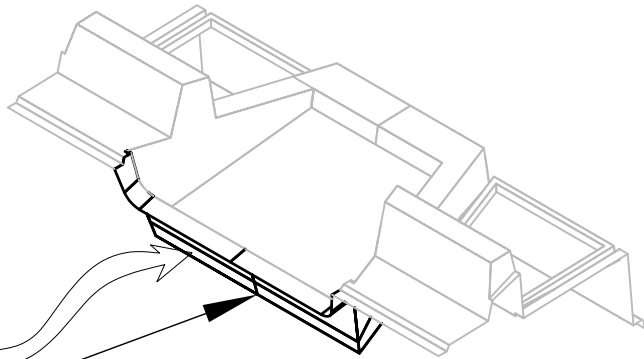
DWG. NO:
06100

REV.
AB

CURRENT ECD
0604144






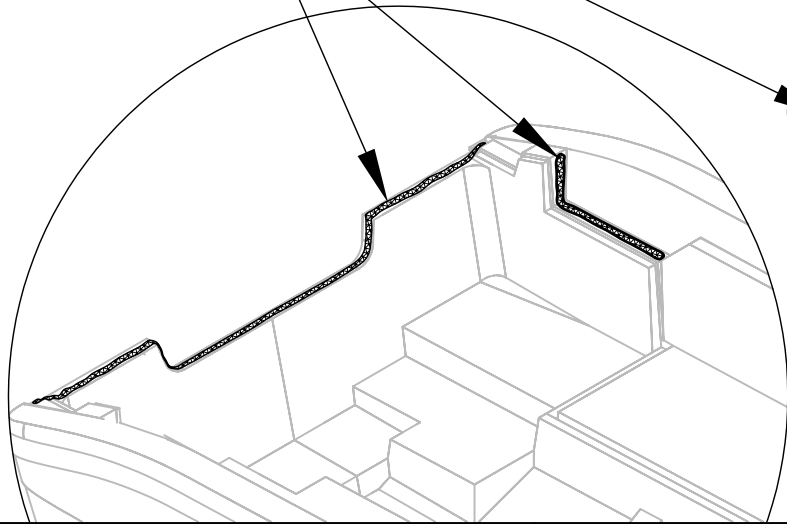
AFT VIEW



APPLY METHYLACRYLATE ADHESIVE (IPS) AT P&S SIDES AND TRANSOM AFTER FINAL POSITIONING

AA
128 129

-  IPS 3/4" THICK ENTIRE FLAT
-  1" LINE IPS (P&S)
-  1/2" LINE IPS



INTERPRET DIMENSIONS AND TOLERANCES PER ANSI Y 14.5 UNLESS OTHERWISE SPECIFIED DIMENSIONS ARE IN INCHES.
 TOLERANCES: ANGLES = ± .5° .XXX = ± .010
 .X = ± .1 X = ± 1/16
 .XX = ± .03 X = ± 1/16
 DO NOT SCALE DRAWING

DRAWN: R DURHAM
 DWG. TITLE:

DATE: 09/25/98

SCALE: NONE

DECK HARDWARE

BOAT MODEL

160DA

MOLD NO.

18J88501

INIT. REL. ECN NO:

R9000

DWG. NO:

06100

SHT. NO.

4 of 6

THIS DOCUMENT IS THE PROPERTY OF BOSTON WHALER, INC. MFG. DEPT. EDgewater, FLORIDA. ALL RIGHTS ARE RESERVED. THIS DOCUMENT AND INFORMATION CONTAINED MUST NOT BE COPIED OR DISCLOSED TO OTHERS WITHOUT WRITTEN PERMISSION OF BOSTON WHALER, INC.

DWG. NO:
06100

REV.
AB

CURRENT ECD
0604144

BILL OF MATERIAL				
ITEM	QTY.	U/M	DESCRIPTION	B.W.I. NO.
01	1	EA	STERNDECK ASSEMBLY	18J88506
02	22	EA	SCREW, TAPPING, #10A x 2" PTH SC	1008754
03	6	EA	SCREW, TAPPING #10 x 1.5" PFH SC	1010248
04	1	EA	FUEL TANK COVER, 16' DA	22J87400
05	1	EA	BOW LOCKER COVER	22J72800
06	4	EA	SCREW, TAPPING, #10A x .75 POH SC	1010552
07	2	EA	HINGE, DOOR, SS 1.5 x 3.00"	1617323
08	6	EA	SCREW, MACH, #10-24 x 1/2" POH SC	1008432
09	6	EA	NUT, BBL, #10-24, PFH	1040187
10	1	EA	LATCH, DRAW SOFT LATCH 4" RIGHT ANG	1331768
11	6	EA	SCREW, TAPPING, #8 x .50" PTH SC	1008812
12	2	EA	SCREW, TAPPING #8A X 5/8" PTH SC	1010925
13	4	EA	CLEAT, 6" SS HOLLOW BASE	1027002
14	18	EA	SCREW, MACH, 1/4-20 x 1" PFH SC	1009950
15	1	EA	LIGHT, NAV COMBO, BOW	0860734
16	3	EA	SCREW, TAPPING, #4 x 1", PPH SC	1010636
17	1	EA	LIGHT, NAV STERN BASE COMBO, REMOV'BL	1119627
18	3	EA	SCREW, TAPPING #6A x 1.25" POH SC	1008556
19	2	EA	CAP, DRAINBOOT STERNLIGHT MAST	1042761
20	1	EA	LIGHT, NAV COMBO BOW, REMOVABLE	1072800
21	1	EA	LIGHT, NAV STERN BASE RND CHR	0331751
22	1	EA	LIGHT, NAV A/R STERN 62" 20DEG BEND	1576552
23	2	EA	THRU-HULL, PVC PRESS FIT	1042084
24	2	EA	NUT, PVC RETAINING THRU-HULL	1042068
25	2	EA	BOOT, CABLE 3" BLACK	1043223
26	2	EA	BOOT, CABLE RING 3" BLACK	1043330
27	5.5	FT.	HOSE, GEN PURPOSE 1"	196667
28	2	EA	CLAMP, HOSE #16 3/4-1.5" SS	0256685
29	2	EA	BASE, BW-05 FISH PED 3"X 6" THREADED SS	1771159
30	6	EA	SCREW, MACHINE #1/4-20 X 1" PPH SC	1008580
31	46	EA	SNAP STUD, W/#8 x 3/8" PH	0203786
32	12	EA	RIVET, POP/BLIND 3/16 x 5/8" ALUM	0189415
33				
34	1	FT	TUBING, VINYL SPEEDO BLK	1043017
35				
36	1	EA	VENT, CLAMSHELL	126870
37	3	EA	SCREW, TAPPING #6A x 1/2 PTH SC	1008796
38	1	EA	ACCESS PLATE, POLYPROP TWIST-OUT 6"	1068642
39	6	EA	RIVET, POP/BLIND #3/16 X 5/8" ALUM	189415
40	1	EA	DAVIT, ANCHOR DAVIT W/ROLLER 9"X 3.25	1336429
41	1	PR	LIGHT, NAV SURF HORIZ MT CHR	996496
42	1	EA	CONSOLE ASSEMBLY	18J90204
43	9	EA	SCREW, TAPPING #14 x 1.5" PFH SC	1008382
44	9	EA	WASHER, FINISH #12 SS	0958868
45	1	ST	PANEL, HDPE CLOSEOUT CONSOLE	1193093
46	5	EA	SCREW, TAPPING #8 x 1.5" POH SC	1255462
47	4	EA	SCREW, TAPPING #8 x 3/4" PFH SC	1008408
48	1	EA	CUSH, BW160DA-05 QTR SEAT PRT WHT/GRY	1781457
49	1	EA	CUSH, BW160DA-05 QTR SEAT STBD WHT/GRY	1781458
50	1	EA	CUSH, BW160DA-05 BOW WHT/GRY	1781455
51	1	EA	HOLDER, HDPE BW160DA-04 COOLER	1755969
52	6	EA	SCREW, TAPPING #14A X 1.5" PFH SC	1008382
53	2	EA	CUSH, BW160DA-05 QTR SEAT B/R WHT/GRY	1781456
54	12	EA	SNAP STUD W/ #8 x 3/8" PH	0203786
55	1	EA	REVERSIBLE PILOT SEAT ASSY	09250160DA
56	6	EA	SCREW, TAPPING #14 x 1" PPH SC	1008689
57	6	EA	SCREW, TAPPING #14 x 1-1/2" PPH SC	1008697
58	2	EA	ROD/SKI-HOLDER, HDPE STBD	1453596
59	2	EA	ROD/SKI-HOLDER, HDPE PORT	1453588
60	2	EA	RACK, HDPE SKI STBD	1171651
61	2	EA	RACK, HDPE SKI PORT	1171594
62	4	EA	STRAP, ROD-TAMER 18" DECK MT.	1087907

(O)
 (E)
 (R)
 (S)
 (X)
 (T)
 (A)
 (T)
 (K)
 (T)
 (X)
 (S)
 (Y)
 (A)
 (A)
 (B)
 (B)
 (S)
 (Y)
 (Y)
 (Y)
 (Y)
 (S)
 (Y)

MOLD NO. 18J88501	BOAT MODEL 160DA	SCALE: NONE	DRAWN: R DURHAM	DATE: 09/25/98	DWG. TITLE: DECK HARDWARE	INTERPRET DIMENSIONS AND TOLERANCES PER ANSI Y 14.5 UNLESS OTHERWISE SPECIFIED DIMENSIONS ARE IN INCHES. TOLERANCES: ANGLES = ± .5° .XXX = ± .010 .X = ± .1 .XX = ± .03 X = ± 1/16	DO NOT SCALE DRAWING



THIS DOCUMENT IS THE PROPERTY OF BOSTON WHALER, INC. MFG. DEPT., EDGEWATER, FLORIDA. ALL RIGHTS ARE RESERVED. THIS DOCUMENT AND INFORMATION CONTAINED MUST NOT BE COPIED OR DISCLOSED TO OTHERS WITHOUT WRITTEN PERMISSION OF BOSTON WHALER, INC.

DWG. NO:
08600

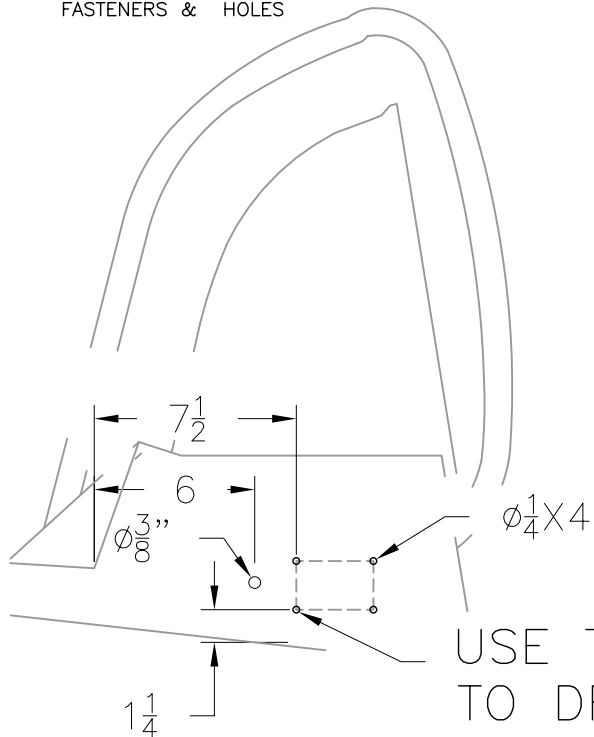
REV.
F

CURRENT ECD
0604144

NOTES:

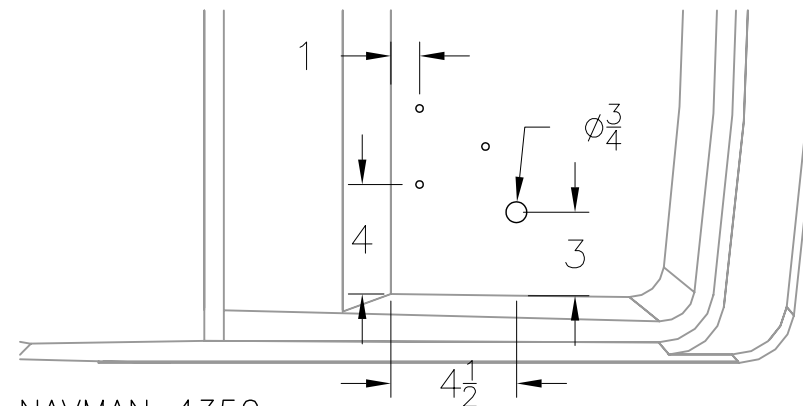
REVISIONS					
REV.	DESCR.	BY	DATE	APPVD.	ECN NO.
C	MODIFY DRAWING BORDER TO AN ATTRIBUTED BORDER	TS	01/24/06	AVM	060132
D	#3 WAS 0115311, #7 WAS 1778036, ADD #26, DELETED 8 & 22	HJR	03/27/06	MG	060402
E	MYE '07: ADDED OPT: 100-75629	HJR	04/17/06	MG	060433
F	#14 WAS 1007764	SWH	05/26/06	AVM	0604144

APPLY SEALANT TO ALL FASTENERS & HOLES



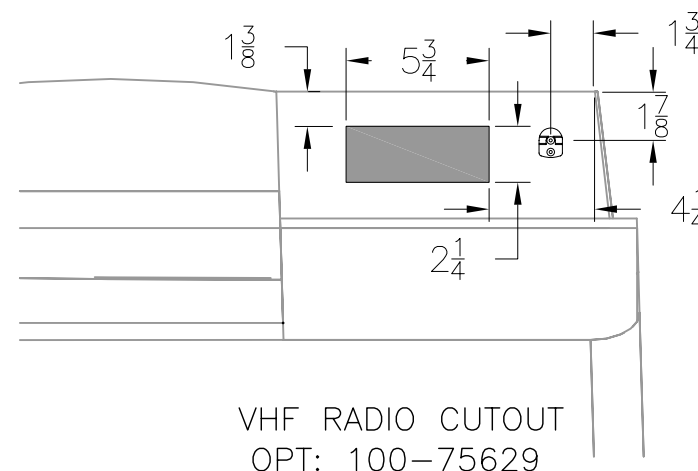
USE TEMPLATE TO DRILL

ANTENNA LOCATION
STBD SIDE CONSOLE



NAVMAN 4350
PLACEMENT ON
CONSOLE

CONSOLE TOP
OPT: 100-70452



VHF RADIO CUTOUT
OPT: 100-75629

INTERPRET DIMENSIONS AND TOLERANCES PER ANSI Y 14.5 UNLESS OTHERWISE SPECIFIED DIMENSIONS ARE IN INCHES.
TOLERANCES: ANGLES = ± .5° .XXX = ± .010
.X = ± .1 .XX = ± .03 X = ± 1/16
DO NOT SCALE DRAWING



CHECKED: D. DEVIEW	DATE: 2/15/05	DRAWN: HAL READ	DATE: 02/09/05	SCALE: NONE	BOAT MODEL	MOLD NO.
APPD: K. RANIERI	DATE: 2/15/05	DWG. TITLE:			160DA	
DESIGN: L. SCHOLZ	DATE: 2/16/05	ELECTRONICS PACKAGE			INIT. REL. ECN NO:	DWG. NO:
INT. ENG: M. GATICA	DATE: 2/17/05				050204	08600
					SHT. NO.	1 OF 3

THIS DOCUMENT IS THE PROPERTY OF BOSTON WHALER, INC. MFG. DEPT., EDGEWATER, FLORIDA. ALL RIGHTS ARE RESERVED. THIS DOCUMENT AND INFORMATION CONTAINED MUST NOT BE COPIED OR DISCLOSED TO OTHERS WITHOUT WRITTEN PERMISSION OF BOSTON WHALER, INC.

DWG. NO:
08600

REV.
F

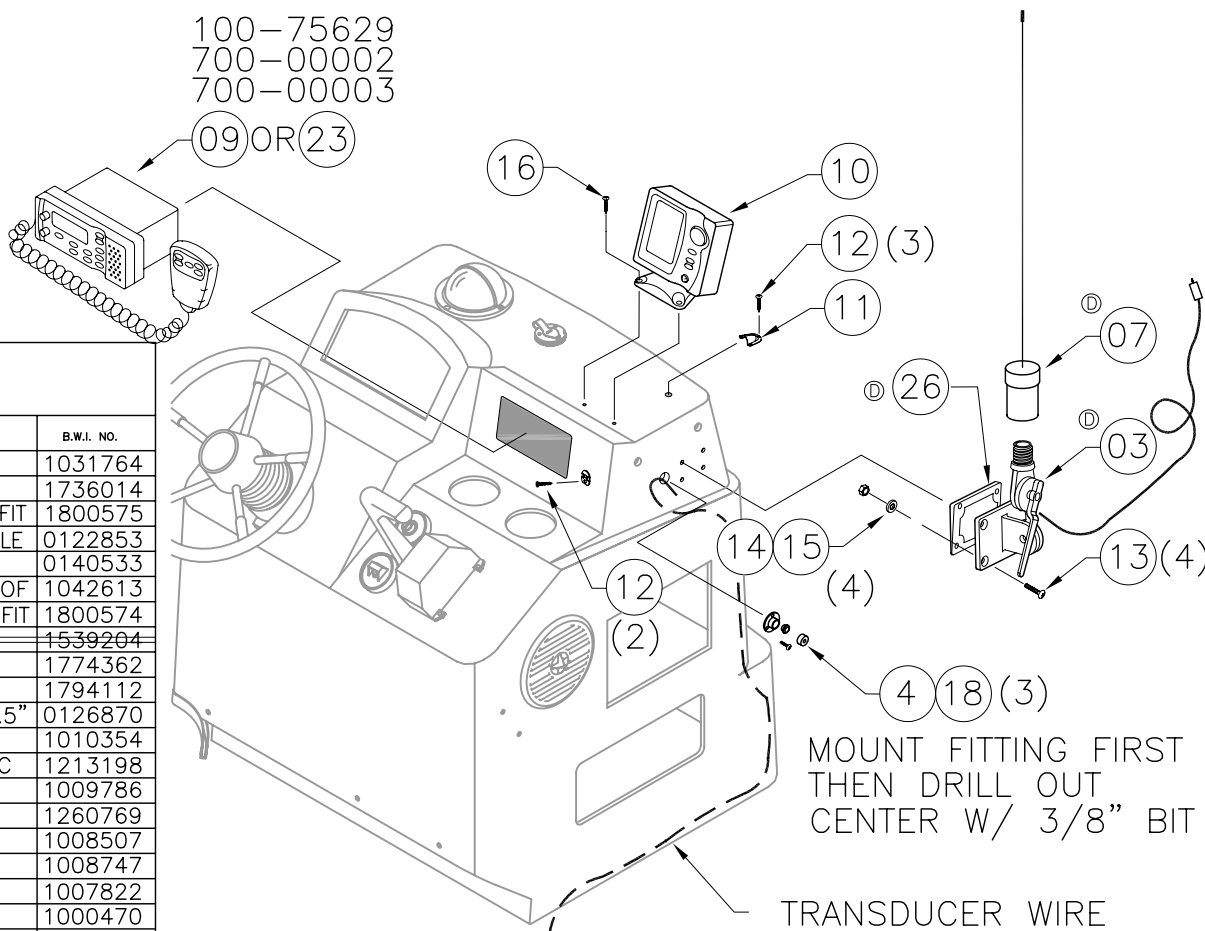
CURRENT ECD
0604144

NOTES:

APPLY SEALANT TO ALL FASTENERS & HOLES

TIE WRAP ANTENNA CABLE SEPARATE FROM OTHER WIRING

100-75629
700-00002
700-00003



MOUNT FITTING FIRST THEN DRILL OUT CENTER W/ 3/8" BIT

TRANSDUCER WIRE

OPTION 100: 70452 ELETRONICS PKG #1
OPTION 100: 75629 VHF RADIO

PARTS LIST

ITEM	QTY.	QTY.	U/M	DESCRIPTION	B.W.I. NO.
1	2	8	-	EA. TIE, CLIP BLK	1031764
2	2	8	-	EA. TIE, CABLE 11.25" BLK 500/BUNDLE	1736014
3	1	-	-	EA. MOUNT, RATCHET VHF 1850 NYLON QUICK-FIT	1800575
4	1	-	-	EA. FITTING, WATER TIGHT OUTLET FOR 5/16" CABLE	0122853
5	-	1	-	EA. FUSE, FERRULE TYPE AGC 1A	0140533
6	-	1	-	EA. FUSE HOLDER, FERRULE TYPE WATERPROOF	1042613
7	1	-	-	EA. ANTENNA, VHF 1770 N/CBL MNT 4.2'QUIK FIT	1800574
8	-	1	-	EA. BRACKET, 1/8"X 3.5"X 5" ANTENNA MOUNT	1539204
9	1	-	-1	EA. RADIO, VHF NAVMAN 7100 DSC	1774362
10	-	1	-	EA. DEPTH FINDER, FISH FIND NAVMAN 4350	1794112
11	-	1	-	EA. VENT, CLAMHELL ROPE LCKR 1 5/8"X 1.5"	0126870
12	2	6	-	EA. SCREW, TAPPING #6A X 1" PFH SC	1010354
13	4	-	-	EA. SCREW, MACHINE #1/4-20 X 1" POH SC	1213198
14	4	-	-	EA. NUT, LOCK #1/4-20 SC STD PATT	1009786
15	4	-	-	EA. WASHER, FLAT #1/4" SC	1260769
16	-	3	-	EA. SCREW, TAPPING #10A X 1" POH SC	1008507
17	-	4	-	EA. SCREW, TAPPING #10A X 1.5" PTH SC	1008747
18	3	-	-	EA. SCREW, TAPPING #4A X 5/8" POH SC	1007822
19	-	2	-	FT. WIRE, 14GA AWG RED INSUL TIN/CPR	1000470
20	-	2	-	FT. WIRE, 14GA AWG BLK INSUL TIN/CPR	1000140
21	-	1	-	EA. TRANSDUCER, TRNSM MNT NAVMAN 4350 FISH	1794113
22	-	1	-	EA. CONN, SOLDERLESS W/CTR PIN	1274588
23	-	-	1	EA. RADIO, VHF NAVMAN 7100 CAN	1788725
24	-	10	-	FT. HOSE, CORR BILGE 1.5" BLK	0123919
25	2	8	-	EA. SCREW, TAPPING #8A X 5/8" PTH SC	1010925
26	1	-	-	EA. SHIM, PLAS NAVMAN ATTNNA PLAS BASE 5DEG WHT	1831249
27	2	2	-	EA. CONN, RING 16/14GA X 10R W/INSUL H/SHRINK	0999854



INTERPRET DIMENSIONS AND TOLERANCES PER ANSI Y 14.5 UNLESS OTHERWISE SPECIFIED DIMENSIONS ARE IN INCHES.
TOLERANCES: ANGLES = ± .5° .XXX = ± .010
.X = ± .1 X = ± 1/16
.XX = ± .03 X = ± 1/16
DO NOT SCALE DRAWING

DRAWN: HAL READ DATE: 02/09/05 SCALE: NONE
DWG. TITLE: ELECTRONICS PACKAGE

BOAT MODEL: 160DA
INIT. REL. ECN NO: 050204

MOLD NO.
DWG. NO: 08600

SHT. NO. 2 OF 3

THIS DOCUMENT IS THE PROPERTY OF BOSTON WHALER, INC. MFG. DEPT., EDGEWATER, FLORIDA. ALL RIGHTS ARE RESERVED. THIS DOCUMENT AND INFORMATION CONTAINED MUST NOT BE COPIED OR DISCLOSED TO OTHERS WITHOUT WRITTEN PERMISSION OF BOSTON WHALER, INC.

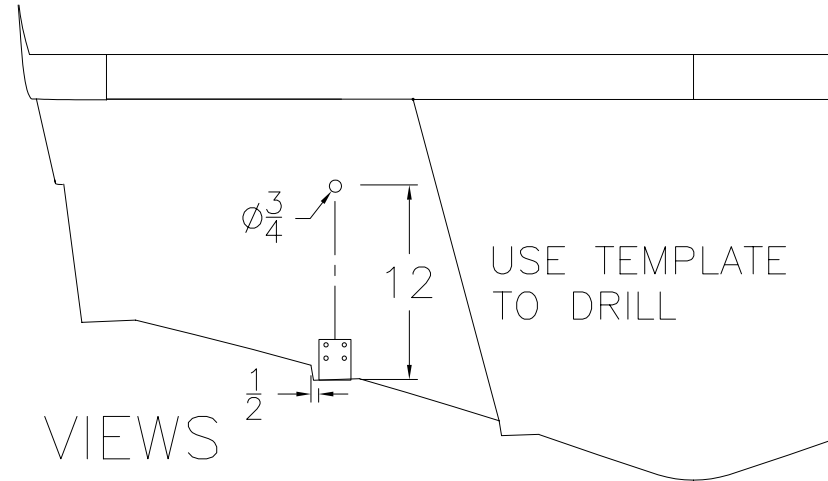
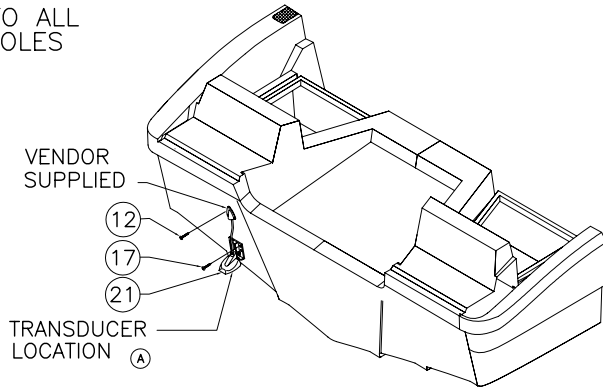
DWG. NO:
08600

REV.
F

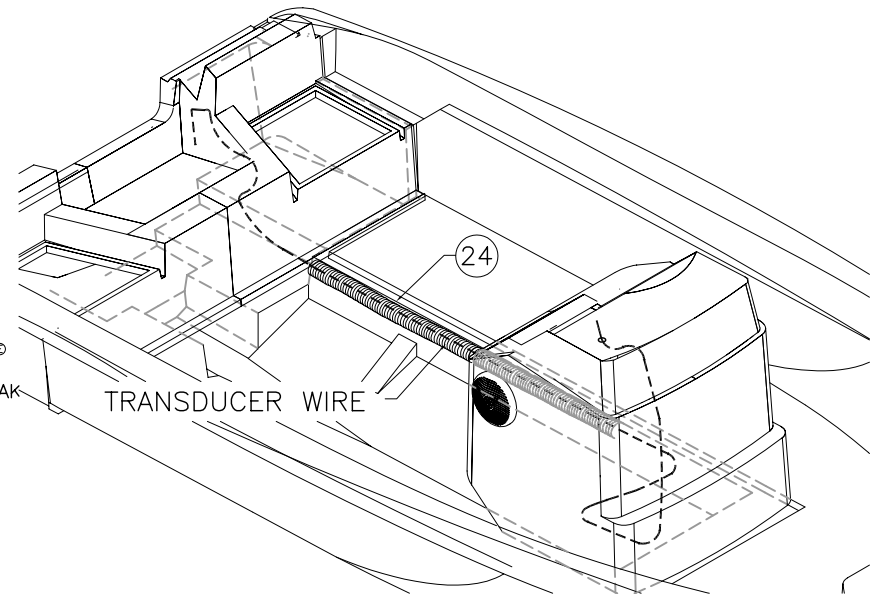
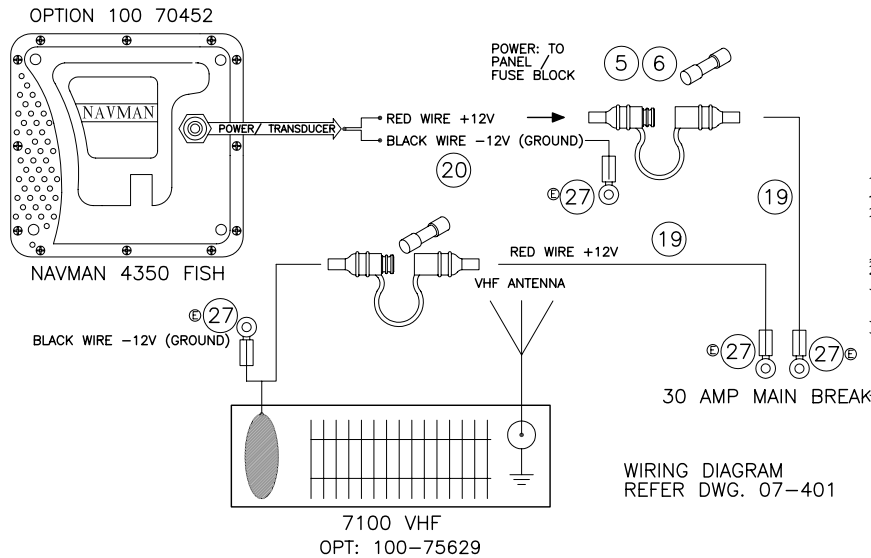
CURRENT ECD
0604144

NOTES:

APPLY SEALANT TO ALL FASTENERS & HOLES



TRANSOM VIEWS

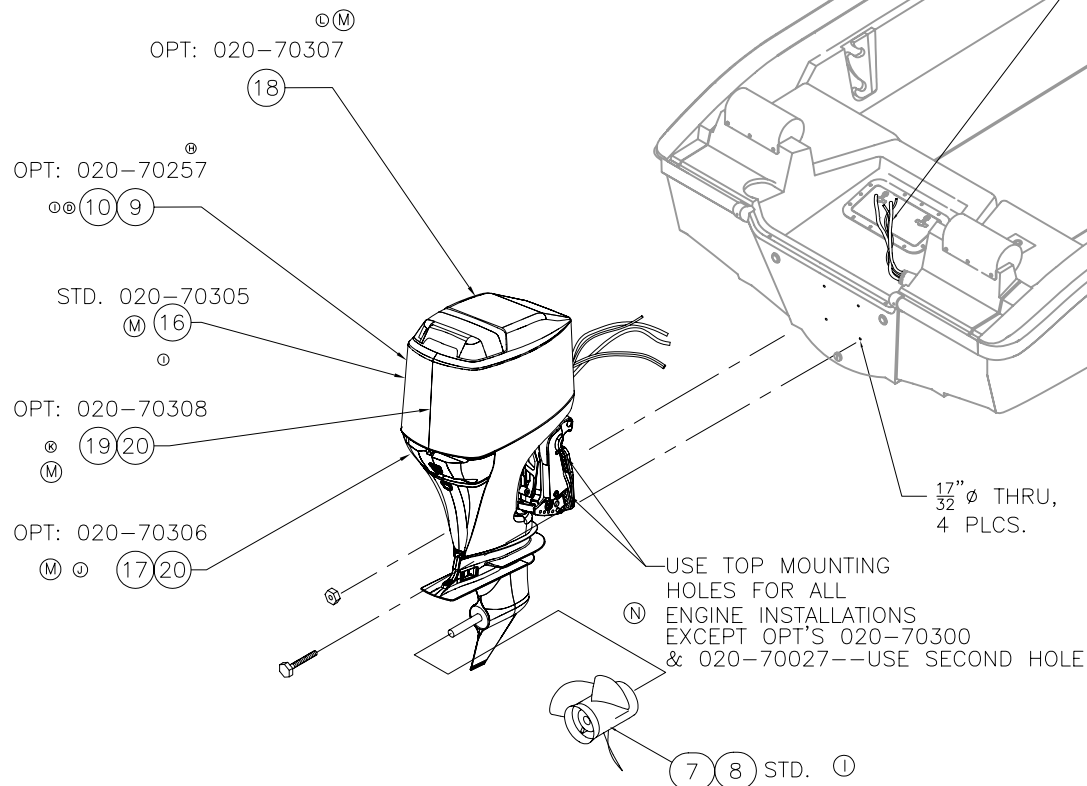


THIS DOCUMENT IS THE PROPERTY OF BOSTON WHALER, INC. MFG. DEPT., EDGEWATER, FLORIDA. ALL RIGHTS ARE RESERVED. THIS DOCUMENT AND INFORMATION CONTAINED MUST NOT BE COPIED OR DISCLOSED TO OTHERS WITHOUT WRITTEN PERMISSION OF BOSTON WHALER, INC.

DWG. NO:	REV.	CURRENT ECD
10201	N	060579

REVISIONS					
REV.	DESCR.	BY	DATE	APPVD.	ECN NO.
L	ADD OPT: 020-70302	GD	11/15/05	RA	05-11-46
M	MYE '07-DELETE 5,6,13,14,15. ADD 16 TO 20	HJR	04/18/06	MG	060354
N	ADDED TO ENGINE MOUNTING HOLE NOTE SHEET 1	SLJ	05/26/06	AVM	060579

1. USE MERCURY INSTRUCTIONS & RIGGING TEMPLATE FOR HOLE LAYOUT AND INSTALLATION.
3. HARDWARE INCLUDED w/ENGINE.
4. MARK CENTERLINE OF TRANSOM FOR ALIGNING RIGGING TEMPLATE.
5. HOLES TO BE DRILLED PERPENDICULAR TO TRANSOM.
6. ALL THRU-TRANSOM FASTENERS TO HAVE SEALANT APPLIED TO BOLT SHANKS.
7. ITEM #8 TO BE USED FOR PACKAGING PROPS.
8. LOWER FASTENERS, P/S HAVE BOLT HEAD ON "ENGINE SIDE". UPPER FASTENERS, P/S HAVE BOLT HEAD ON "MOTORWELL" SIDE.



SHIFT/THROTTLE CABLES,
& ENGINE HARNESS
PASSED THRU RIGGING HOSE

*NOTE: DO NOT INSTALL OR SUPPLY
ITEMS 1-10 WHEN
THE FOLLOWING OPTIONS
ARE ORDERED: 020-79999
& 020-70405.

17" ϕ THRU,
4 PLCS.
USE TOP MOUNTING
HOLES FOR ALL
ENGINE INSTALLATIONS
EXCEPT OPT'S 020-70300
& 020-70027--USE SECOND HOLE

7 8 STD. ①

INTERPRET DIMENSIONS AND TOLERANCES PER ANSI Y 14.5
UNLESS OTHERWISE SPECIFIED DIMENSIONS ARE IN INCHES.
TOLERANCES: ANGLES = $\pm .5'$.XXX = $\pm .010$
.X = $\pm .1$ X = $\pm 1/16$
.XX = $\pm .03$ X = $\pm 1/16$
DO NOT SCALE DRAWING

NOTE: SHIP PROP
LOOSE, PACKAGED
IN ITEM 8

BOSTON WHALER
PRODUCT DEV. & MFG. ENGINEERING GROUP

CHECKED: R. AVILA	DATE: 5/27/03	DRAWN: R. LEE	DATE: 05/23/03	SCALE: NONE	BOAT MODEL	MOLD NO.
APPD: L. SCHOLZ	DATE: 5/27/03	DWG. TITLE:			160DA	
DESIGN: L. SCHOLZ	DATE: 5/27/03	Engine Installation			INIT. REL. ECN NO:	DWG. NO:
INT. ENG: M. GATICA	DATE: 6/08/05				030337	10201
					SHT. NO.	
					1	of 2

Parts List

ITEM	QTY	U/M	DESCRIPTION	B.W.I.	NO.
①(B)	1	EA.	O/B, MERC 90ELPTO SALT '04	1756351	
①	1	EA.	PROP, 13"X 19" ALUM BLACK MAX	0127381	
①(G)(F)(C)	1	EA.	O/B, MERC 90ELPT 4-STROKE SALT '04	1750633	
①(G)	1	EA.	O/B, MERC 115 ELPTOCO 20"SHAFT	1753084	
①(M) ①(J)	1	EA.	O/B, MERC 115 ELPT 4-STROKE EFI 20" SHAFT	1753086	
①(M)	1	EA.	PROP, 13 1/8" X 16" VENGEANCE	1357821	
	1	EA.	PROP, 13"X18" VENGEANCE RH	1412014	
	1	EA.	BAG, POLY 33"X 40"X 33GAL HVY CLR	1143163	
①(D)	1	EA.	O/B, MERC 115ELPT OPTIMAX 20" SW	1754413	
①(D)	1	EA.	PRIMER BULB, W/FUEL LINE	1477900	
①(H)(E)	1	EA.	O/B, MERC 90ELPT OPTIMAX 20" SW	1754411	
①(H)(E)	1	EA.	PROP, 13.25"X 20" SS LASER 2	0783993	
①(M) ①(I)	1	EA.	O/B, MERC 90 ELPT 4-STROKE EFI 20"SHAFT	1802339	
①(M) ①(k)	1	EA.	O/B, MERC 115 ELPT 4-STROKE EFI EU	1816001	
①(M) ①(L)	1	EA.	O/B, MERC 100 ELPT 4-S EU 2006	1817115	
①(M)	1	EA.	O/B, MERC 90 ELPT 4-S L4NA	1817145	
①(M)	1	EA.	O/B, MERC 115 ELPT 4-S L4NA	1817147	
①(M)	1	EA.	O/B, MERC 100 ELPT 4-S L4NA EU	1838160	
①(M)	1	EA.	O/B, MERC 115 ELPT 4-S L4NA EU	1838161	
①(M)	1	EA.	PROP, 13 1/4"X 15" VENGEANCE	1835940	

THIS DOCUMENT IS THE PROPERTY OF BOSTON WHALER, INC. MFG. DEPT., EDGEWATER, FLORIDA. ALL RIGHTS ARE RESERVED. THIS DOCUMENT AND INFORMATION CONTAINED MUST NOT BE COPIED OR DISCLOSED TO OTHERS WITHOUT WRITTEN PERMISSION OF BOSTON WHALER, INC.

DWG. NO:
06300

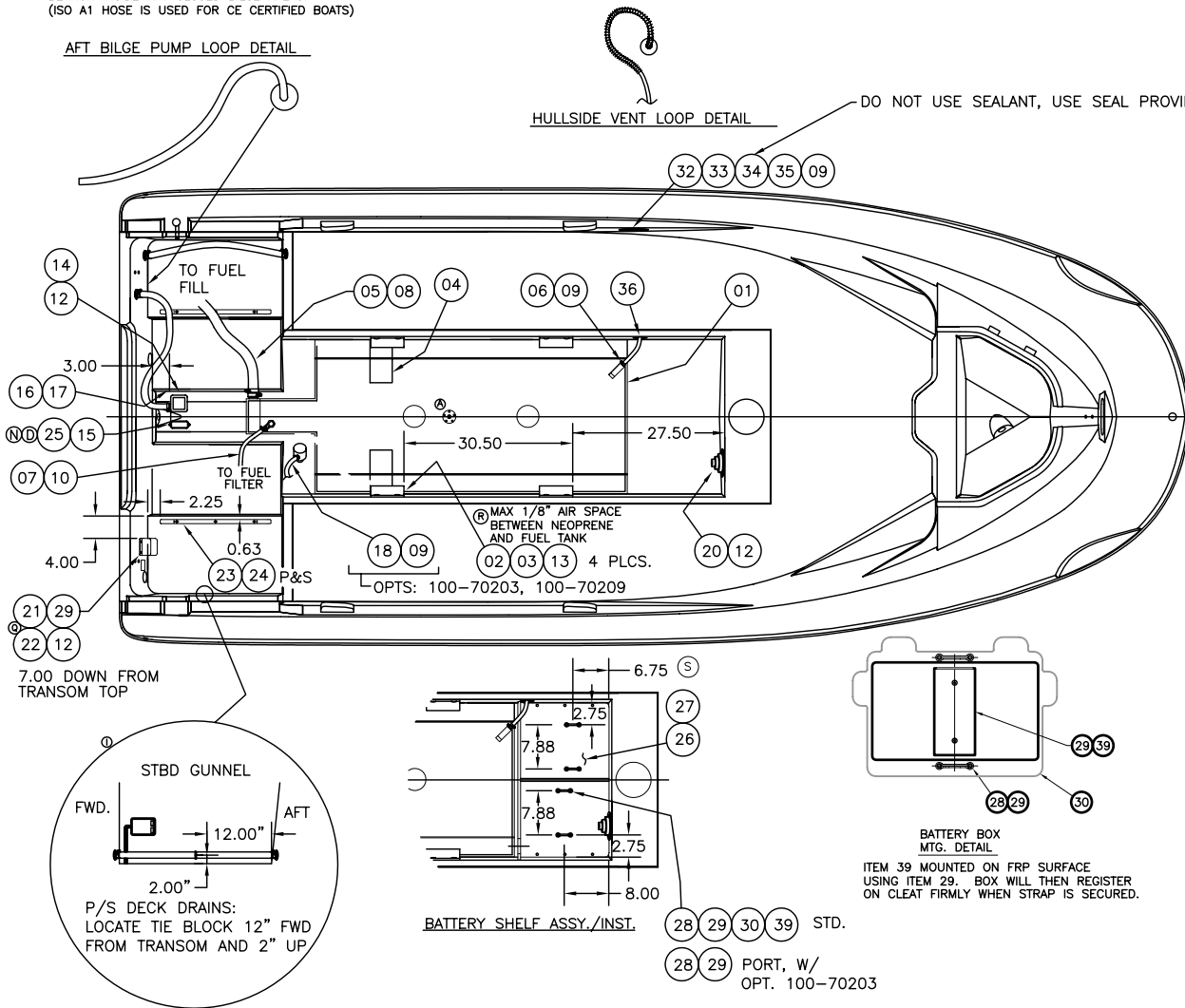
REV.
W

CURRENT ECD
060132

NOTES:

© NOTE:
ONLY TYPE A CLASS 1 FUEL HOSE MUST BE RUN INSIDE ANY CLOSED BILGE AREAS. (ISO A1 HOSE IS USED FOR CE CERTIFIED BOATS)

REVISIONS					
REV.	DESCR.	BY	DATE	APPVD.	ECN NO.
W	MODIFY DRAWING BORDER TO AN ATTRIBUTED BORDER	TS	01/24/06	AVM	060132



BILL OF MATERIAL				
ITEM	QTY.	U/M	DESCRIPTION	B.W.I. NO.
①	01	1	EA TANK, FUEL 45GAL 160DA-03 W/SS SENDER	1746453
②	02	4	EA BRACKET, PVC 2"x 2"x 1/4"x 6" BW-01	1547280
③	03	2	FT TAPE, FOAM NEOPRENE W/3M 9828 3/8"	1497452
④	04	6	FT TAPE, CLOSED CELL NEOPRENE, 3/8"	0485318
⑤	05	2.7	FT HOSE, FUEL, 1.5" TYPE A, CLASS 2	0123745
⑥	06	3	FT HOSE, FUEL 5/8" ISO/CE	0947499
⑦	07	6	FT HOSE, FUEL 3/8" ISO/CE W/PLAS LINER	1497486
⑧	08	4	EA CLAMP, HOSE, #24, 1" - 2"	0256693
⑨	09	3	EA CLAMP, HOSE, #10, 1/2 - 1-1/8"	0263954
⑩	10	4	EA CLAMP, HOSE, #06M, 5/16 - 7/8"	0123398
⑪	11	1	EA CLIP, SUPPORT, 1" DIA.	1216720
⑫	12	EA	SCREW, TAPPING, #8A x 5/8" PTH	1010925
⑬	13	8	EA SCREW, TAPPING, #14A x 1.5" PTH	1010909
⑭	14	1	EA PUMP, BILGE, 1100GPH	1480094
⑮	15	1	EA SWITCH, FLOAT, RULE W/ COVER	0989335
⑯	16	4.0	FT HOSE, WATER, 1-1/8" BLACK	1042076
⑰	17	2	EA CLAMP, HOSE, #16, 3/4 - 1.5"	0256685
⑱	18	5	FT HOSE, WATER 3/4" BLK REINF PVC	1042100
⑲	19	1	EA ELBOW, MARELON 3/4PTx3/4BARB, 90 DEG.	0995571
⑳	20	1	EA GROMMET, O/B HARNESS 3" BLACK	0580720
㉑	21	1	EA BUSS BAR, TERM POST 2 5/16 STUDS (ANL FUSE)	1717497
㉒	22	1	EA COVER, ABS BW-02 TERM POST 5/16 STUDS	1717496
㉓	23	2	EA CLEAT, HDPE AFT STORAGE	1184621
㉔	24	6	EA SCREW, TAPPING, #10A x 2.5" POH	1008531
㉕	25	2	EA SCREW, TAPPING, #8A x 1.25" PPH	1010644
㉖	26	1	EA SHELF, HDPE BATTERY	1185917
㉗	27	6	EA SCREW, TAPPING #10A x 1.5" PTH	1008747
㉘	28	2	EA BRACKET, BATT HOLDDOWN, 1.25"	1042837
㉙	29	10	EA SCREW, TAPPING, #10A x 1" POH	1008507
㉚	30	1	EA HOLDER, BATTERY GR24 FULLY ENCL	0650598
㉛	31	EA		
㉜	32	1	EA ACCESS PLATE, POLYPROP TWIST-OUT 5"	1016153
㉝	33	6	EA RIVET, POP/BLIND #3/16 X 5/8" ALUM	189415
㉞	34	1	EA VENT, FUEL/WATER SS 3/4" FLUSH STRAIGHT	1754881
㉟	35	1	EA SPRING, VENT 1.05"x12" SS	1041367
㊱	36	1	EA BUSHING, PLAS SNAP BLK	1041375
㊲	37	1	EA LABEL, BW WARNING TERMINAL BLOCK	1616922
㊳	38	1	EA SHIM, HDPE BW-01 FLOAT SWITCH	1470475
㊴	39	2	EA CLEAT, HDPE BTRY BOX WHT	1618602

INTERPRET DIMENSIONS AND TOLERANCES PER ANSI Y 14.5 UNLESS OTHERWISE SPECIFIED DIMENSIONS ARE IN INCHES.
TOLERANCES: ANGLES = ± .5° .XXX = ± .010
.X = ± .1 X = ± 1/16
.XX = ± .03 X = ± 1/16
DO NOT SCALE DRAWING



CHECKED: S. WOOD	DATE: 9/25/98	DRAWN: R DURHAM	DATE: 09/25/98	SCALE: NONE	BOAT MODEL	MOLD NO.
APPD: M. MITCHELL	DATE: 8/7/00	DWG. TITLE: FUEL / BILGE / WATER			160DA	18J88503
DESIGN: S. WOOD	DATE: 9/25/98	INIT. REL. ECN NO:	DWG. NO:	SHT. NO.		
INT. ENG: L. SCHOLZ	DATE: 9/25/98	R8001	06300	1 of 1		

THIS DOCUMENT IS THE PROPERTY OF BOSTON WHALER, INC. MFG. DEPT., EDGEWATER, FLORIDA. ALL RIGHTS ARE RESERVED. THIS DOCUMENT AND INFORMATION CONTAINED MUST NOT BE COPIED OR DISCLOSED TO OTHERS WITHOUT WRITTEN PERMISSION OF BOSTON WHALER, INC.

DWG. NO:
07206

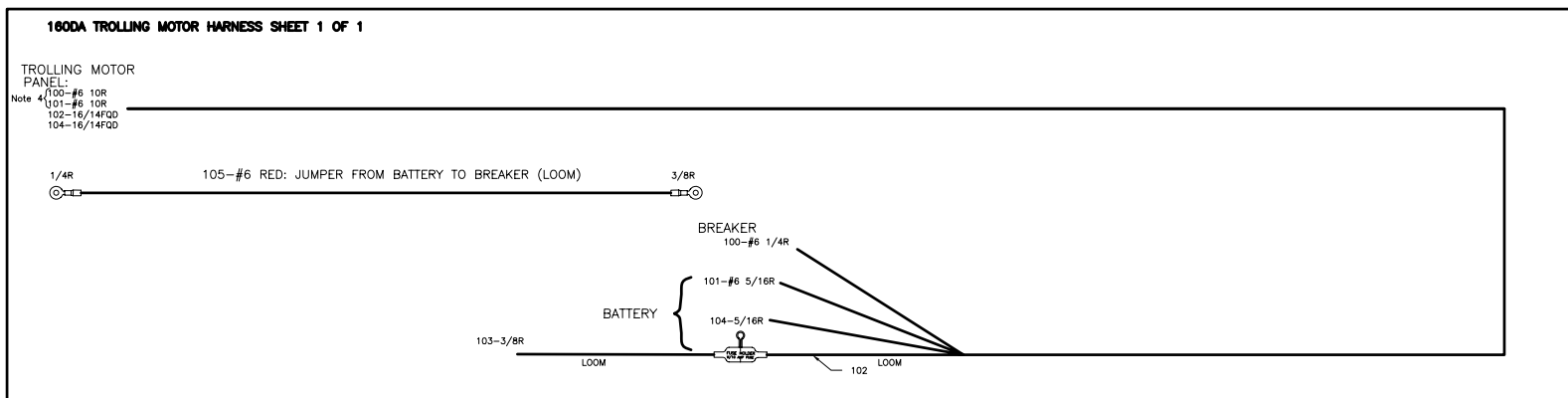
REV.
D

CURRENT ECD
060132

NOTES:

1. ALL POSITIVE WIRE CONNECTIONS TO THE BATTERY MUST BE CONTAINED IN CHAFE PROTECTION (FLEX) FROM THE CONNECTION POINT TO THE BREAKER OR FUSE.
2. FUSE HOLDER MRP# 1042613
3. 10 AMP FUSE MRP# 182063
4. CRIMP ENDS ON #'s 100 & 101 (don't shrink) ; TAPE CONNECTORS FOR #'s 102,104 & SHRINK WRAP FOR #'S 100 & 101 SEPARATELY TO HARNESS FOR ASSEMBLY TO INSTALL.

REVISIONS					
REV.	DESCR.	BY	DATE	APPVD.	ECN NO.
D	MODIFY DRAWING BORDER TO AN ATTRIBUTED BORDER	TS	01/24/06	AVM	060132



WIRE #	AWG	COLOR	FUNCTION	FROM	TO	LENGTH
100	6	RED	MAIN BREAKER (+) FEED	BREAKER	PANEL	12'
101	6	BLK	PANEL GROUND	BATTERY (-)	PANEL	12'
102	14	RED	12 V RECEPTACLE FEED	FUSE	PANEL	12'
103	14	RED	12 V RECEPTACLE FUSE FEED	BATTERY (+)	FUSE	1'
104	14	BLK	12 V RECEPTACLE GROUND	BATTERY (-)	PANEL	12'
105	6	RED	JUMPER	BATTERY (+)	BREAKER	3'

INTERPRET DIMENSIONS AND TOLERANCES PER ANSI Y 14.5 UNLESS OTHERWISE SPECIFIED DIMENSIONS ARE IN INCHES.
TOLERANCES: ANGLES = ± .5° .XXX = ± .010
.X = ± .1 .XX = ± .03 X = ± 1/16
DO NOT SCALE DRAWING



CHECKED: R. AVILA	DATE: 12/17/02	DRAWN: SLEGG	DATE: 12/17/02	SCALE: NONE	BOAT MODEL: 160DA	MOLD NO.
APPD: K. RANIERI	DATE: 12/18/02	DWG. TITLE: HARNESS TROLLING MOTOR			INIT. REL. ECN NO: 021015	DWG. NO: 07206
DESIGN: L. SCHOLZ	DATE: 01/06/03				SHT. NO. 1 OF 2	
INT. ENG: M. GATHRIGHT	DATE: 12/19/02					

THIS DOCUMENT IS THE PROPERTY OF BOSTON WHALER, INC. MFG. DEPT., EDGEWATER, FLORIDA. ALL RIGHTS ARE RESERVED. THIS DOCUMENT AND INFORMATION CONTAINED MUST NOT BE COPIED OR DISCLOSED TO OTHERS WITHOUT WRITTEN PERMISSION OF BOSTON WHALER, INC.

DWG. NO:
07206

REV.
D

CURRENT ECD
060132

NOTES:

- 1.) WIRES TO BE 105° C, SAE J378/J1128, WITH TYE 2 STRANDING. GROUNDING WIRES TO BE TYPE 3 AND TINNED COPPER.
- 2.) ALL LOW VOLTAGE WIRE INSULATION TO HAVE THE FOLLOWING INFORMATION PRINTED ON IT: A: MANUFACTURER'S NAME
B: TEMPERATURE RATING (I.E. 105° C) C; SAE J378/J1127 D: GAUGE (I.E. 10AWG)
- 3.) WIRES TO BE LABELED WITH SPECIFIED WIRE NUMBERS AT BOTH ENDS.
- 4.) BOAT CABLE TO BE 3 CONDUCTOR, TINNED, 105° C DRY, JACKETED, AND MEET UL-1426 SPECIFICATIONS FOR BOAT CABLE.
120V CABLE CONDUCTORS TO BE BLACK/WHITE/GREEN WITH A WHT JACKET.
220V CABLE CONDUCTORS TO BE BLUE/BROWN/GREEN WITH A TAN JACKET.
- 5.) ALL DIMENSIONS ARE INCHES UNLESS OTHERWISE SPECIFIED.
- 6.) FOR GROUND BUS LOCATIONS WITH A BUS BAR SPECIFIED, TERMINATE WIRES WITH PROPER SIZE ADHESIVE LINED HEAT SHRINK INSULATED RING CONNECTORS.
- 7.) SPEAKER WIRES ARE 16/2, HIGH CONDUCTIVITY COPPER, WITH 90° C CLEAR INSULATION.
- 8.) SPOT TAPE HARNESS EVERY 12 TO 14 INCHES.
- 9.) TERMINATION'S SPECIFIED ARE TO BE HEAT SHRINK ADHESIVE SEALED TYPE.
- 10.) SHEATH ENTIRE HARNESS IN FLAME RETARDENT SPLIT LOOM EXPOSING 3" AT THE ENDS OF EACH BREAKOUT.



INTERPRET DIMENSIONS AND TOLERANCES PER ANSI Y 14.5 UNLESS OTHERWISE SPECIFIED DIMENSIONS ARE IN INCHES.
TOLERANCES: ANGLES = ± .5° .XXX = ± .010
.X = ± .1 X = ± 1/16
.XX = ± .03
DO NOT SCALE DRAWING

DRAWN: SLEGG DATE: 12/17/02 SCALE: NONE
DWG. TITLE:
HARNESS TROLLING MOTOR

BOAT MODEL
160DA
INIT. REL. ECN NO:
021015

MOLD NO.
DWG. NO:
07206

SHT. NO.
2 OF 2

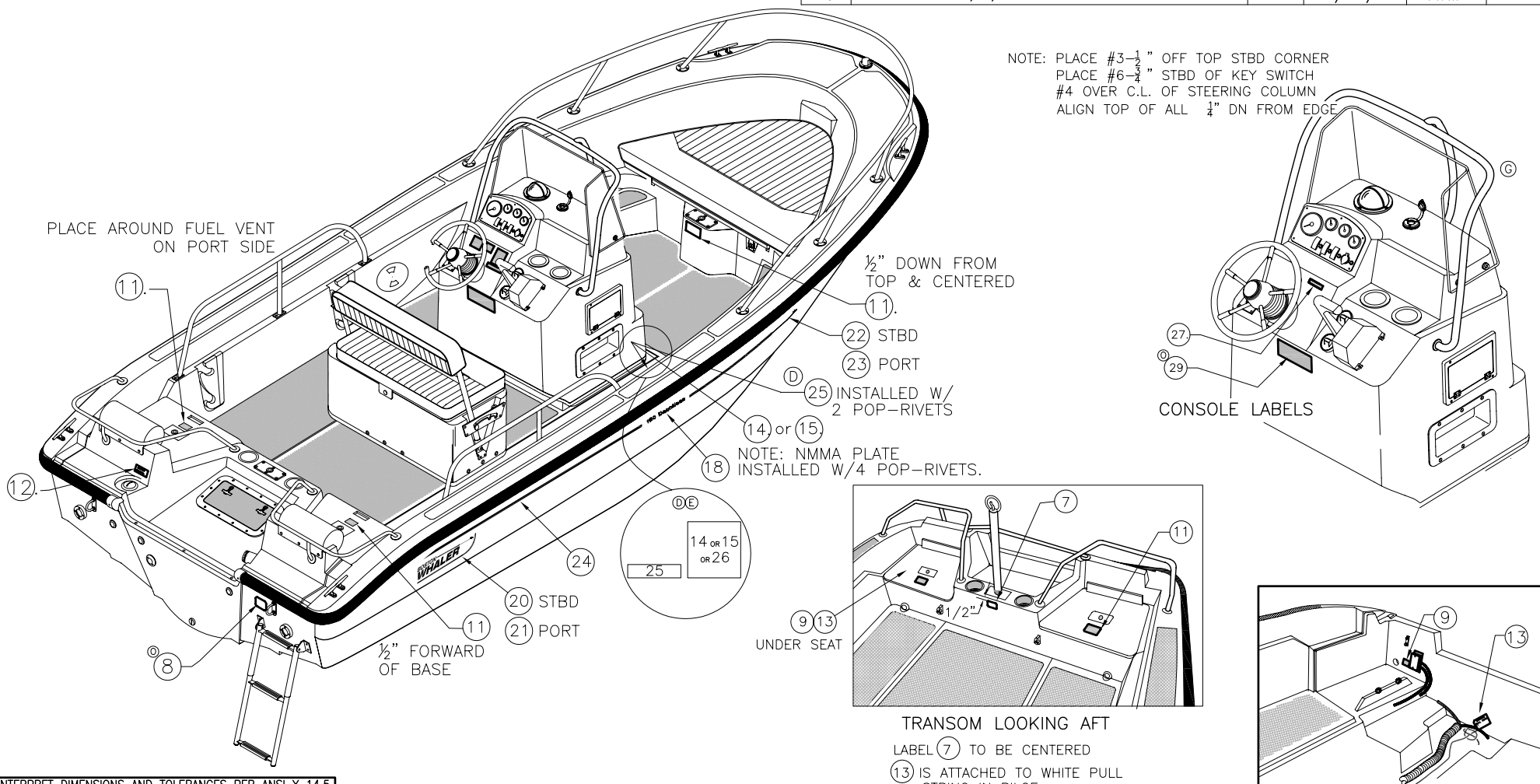
THIS DOCUMENT IS THE PROPERTY OF BOSTON WHALER, INC. MFG. DEPT., EDGEWATER, FLORIDA. ALL RIGHTS ARE RESERVED. THIS DOCUMENT AND INFORMATION CONTAINED MUST NOT BE COPIED OR DISCLOSED TO OTHERS WITHOUT WRITTEN PERMISSION OF BOSTON WHALER, INC.

DWG. NO:	REV.	CURRENT ECD
12100	Q	060242

1. CLEAN ALL AREAS WITH DENATURED ALCOHOL BEFORE APPLYING LABELS.
2. LABEL 10 SHALL BE INCLUDED IN OWNERS DOCUMENTS PACKET.
3. 16, 17 ARE ON BREAKER BOX IN CONSOLE UNDER HELM

REVISIONS					
REV.	DESCR.	BY	DATE	APPVD.	ECN NO.
L	ADDED OPT. 20-70263 TO ITEM #28.	SL	3/16/04	ZAC	03-10-16
M	DELETED ITEM #4, STEERING PULL LABEL, SHEETS 1 & 2.	SL	6/1/04	ZAC	03-11-03
N	MYE '06: DELETE OPT. 20-70263	MRZ	04/11/05	MG	05-03-54
O	ADDED ITEM #29; ITEM #08 P/N 1811367 WAS 1016948, SHEETS 1 & 2.	SL	10/25/05	ME	05-07-50
P	DELETE MERC DECAL #1743323.	AVM	03/01/06	ME	051212
Q	DELETE ITEMS 1, 3, 5 & 6. SHEETS 1 & 2	SLJ	05/24/06	AVM	060242

NOTE: PLACE #3- $\frac{1}{4}$ " OFF TOP STBD CORNER
PLACE #6- $\frac{3}{4}$ " STBD OF KEY SWITCH
#4 OVER C.L. OF STEERING COLUMN
ALIGN TOP OF ALL $\frac{1}{4}$ " DN FROM EDGE



INTERPRET DIMENSIONS AND TOLERANCES PER ANSI Y 14.5 UNLESS OTHERWISE SPECIFIED DIMENSIONS ARE IN INCHES.
TOLERANCES: ANGLES = $\pm .5^\circ$.XXX = $\pm .010$
.X = $\pm .1$ X = $\pm 1/16$
.XX = $\pm .03$ X = $\pm 1/16$
DO NOT SCALE DRAWING



CHECKED: R. DURHAM	DATE: 2/12/01	DRAWN: H READ	DATE: 061700	SCALE: NTS	BOAT MODEL	MOLD NO.
APPD: M. MITCHELL	DATE: 2/8/01	DWG. TITLE:			160DA	
DESIGN: L. SCHOLZ	DATE: 2/12/01	LABEL LOCATIONS			INIT. REL. ECN NO:	DWG. NO:
INT. ENG: M. MITCHELL	DATE: 2/8/01				R9000	12100
						SHT. NO.
						1 of 2

BILL OF MATERIALS

DESCRIPTION

ITEM	QTY.	U/M	S/O	DESCRIPTION	B.W.I. NO.
Q 1	1	EA	STD	LABEL, BW FUEL TANK NO DRILL	1016443
H 2	1	EA	STD	LABEL, BW NO SMOKING FUEL VENT	1016484
Q 3	1	EA	STD	LABEL, BW SAFETY HI PERF BOAT	1017136
M 4	1	EA	STD	LABEL, BW STEERING PULL WARNING	1016518
Q 5	1	EA	STD	LABEL, BW VENT HOSE NO DRILL	1016898
Q 6	1	EA	STD	LABEL, BW WARNING FUEL GAUGE READ	1016534
A 7	1	EA	OPT	LABEL, BW SKI PYLON	1590140
O 8	1	EA	STD	LABEL, DANGER CO TRANSOM 06	1811367
	1	EA	STD	LABEL, BW WARNING TERMINAL BLOCK	1016922
	1	EA	STD	LABEL, BW WINDSHIELD CARE	1016955
	3	EA	OPT	PLATE, BW 99 CAUTION FISHING PED SEAT POSITION	1230135
	1	EA	STD	WARNING FUEL HAZARD	995704
	1	EA	STD	TAG, BW DO NOT PULL RIGGING	999755
	1	EA	STD	PLATE, NMMA 02-BW 160DA	1619816
	1	EA	OPT	PLATE, CE 02-BW 160DA	1619824
I 16	1	EA	STD	LABEL, BILGE (LEXAN)	1745123
	1	EA	STD	LABEL, BW DC MAIN BREAKER	1075282
	2	EA	STD	DECAL, BW-04 160DA GRY (DRIP MOLD)	1753482
	2	EA	OPT	DECAL, BW 160 CORBIN DK BLUE	1620830
	2	EA	STD	DECAL, BW DAUNTLESS	1030683
	1	EA	STD	DECAL, BW-04 LOGO 20" RED STB (DRIP MOLD)	1752938
	1	EA	OPT	DECAL, BW-04 LOGO 20" DK.BLUE STB (DRIP MOLD)	1752940
G B 21	1	EA	STD	DECAL, BW-04 LOGO 20" RED PRT (DRIP MOLD)	1752937
	1	EA	OPT	DECAL, BW-04 LOGO 20" DK BLUE PRT(DRIP MOLD)	1752939
	1	EA	STD	DECAL, BW-04 HARPOON STB WHLR RED	1752932
	1	EA	OPT	DECAL, BW-04 HARPOON STB DK BLUE	1752936
	1	EA	STD	DECAL, BW-04 HARPOON PRT WHLR RED	1752931
	1	EA	OPT	DECAL, BW-04 HARPOON PRT DK BLUE	1752933
	24.33	FT	STD	TAPE, SOLID 1" RED W/GRY PIN STRIP	1754509
	24.33	FT	OPT	TAPE, SOLID 1" DK BLUE W/GRY PIN STRIP	1754510
D 25	1	EA	STD	PLATE, BW-03 MAX ENG WT 410LB/185KG	1735926
E 26	1	EA	OPT	PLATE, SAFETY CANADIAN CAP BW160DA-03	1746014
I F 27	1	EA	OPT	LABEL, CAUTION REMOVE SKI PYLON	1752493
P K 28	1	EA	OPT	DECAL, MERC S CRFT NETWORKED	1743323
O 29	1	EA	OPT	LABEL, DANGER CO HELM 06	1811368



INTERPRET DIMENSIONS AND TOLERANCES PER ANSI Y 14.5 UNLESS OTHERWISE SPECIFIED DIMENSIONS ARE IN INCHES.
 TOLERANCES: ANGLES = ± .5° .XXX = ± .010
 .X = ± .1 X = ± 1/16
 .XX = ± .03
 DO NOT SCALE DRAWING

DRAWN: H READ DATE:061700 SCALE: NTS
 DWG. TITLE: LABEL LOCATIONS

BOAT MODEL 160DA MOLD NO.
 INIT. REL. ECN NO: R9000 DWG. NO: 12100 SHT. NO. 2 OF 2

THIS DOCUMENT IS THE PROPERTY OF BOSTON WHALER, INC. MFG. DEPT., EDGEWATER, FLORIDA. ALL RIGHTS ARE RESERVED. THIS DOCUMENT AND INFORMATION CONTAINED MUST NOT BE COPIED OR DISCLOSED TO OTHERS WITHOUT WRITTEN PERMISSION OF BOSTON WHALER, INC.

DWG. NO:
09250

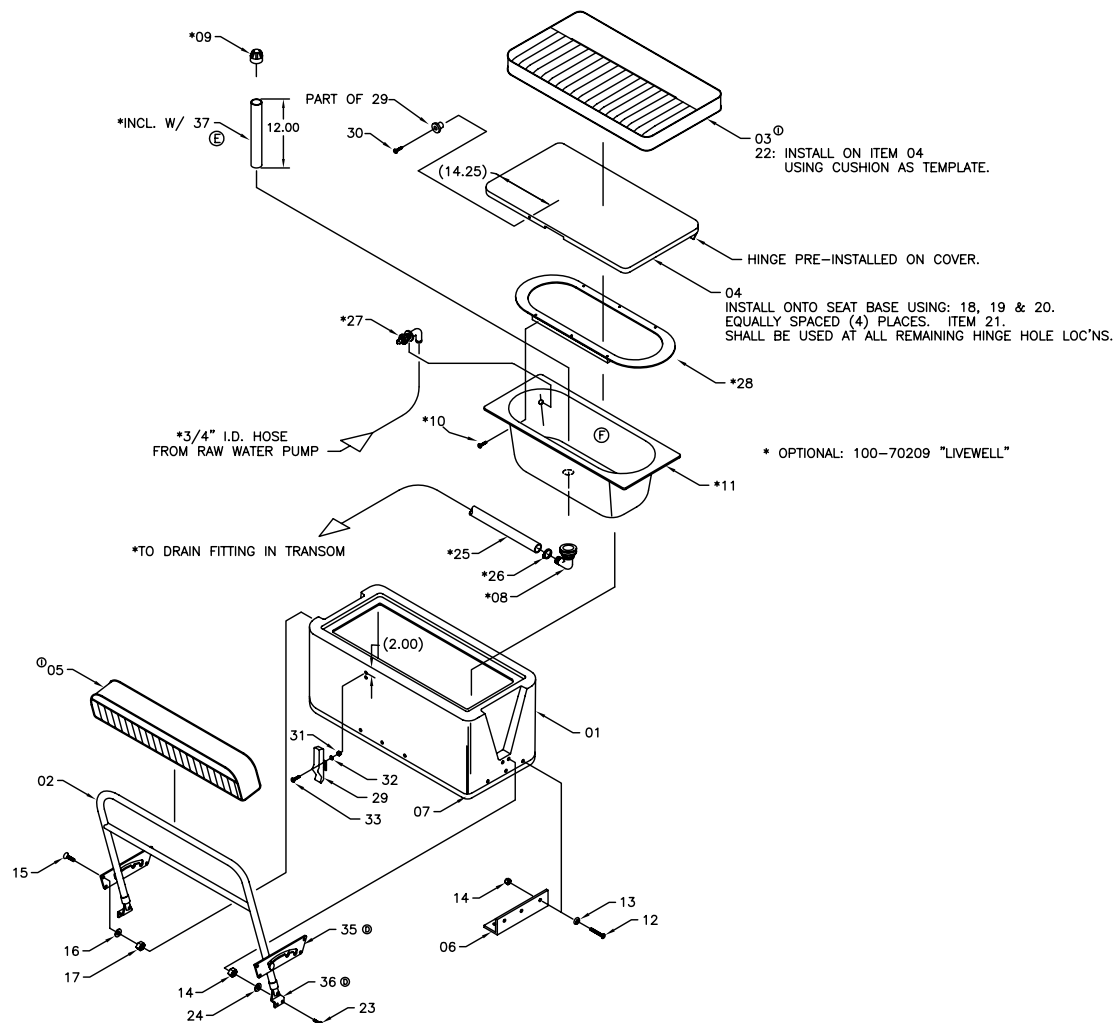
REV.
J

CURRENT ECD
060132

NOTES:

REVISIONS					
REV.	DESCR.	BY	DATE	APPVD.	ECN NO.
J	MODIFY DRAWING BORDER TO AN ATTRIBUTED BORDER	TS	01/24/06	AVM	060132

BILL OF MATERIAL					
ITEM	QTY.	U/M	DESCRIPTION	B.M.L. NO.	
01	1	EA	FIBERGLASS PART, REVERS. PILOT SEAT	22H06401	
02	1	EA	SUPPORT, SS REV SEAT W/ B/R	1187053	
03	1	EA	CUSH, BW160DA-05 REV SEAT WHT/GRY	1781450	①
04	1	EA	BASE, HDPE REV SEAT	1185883	
05	1	EA	CUSH, BW160DA-05 REV SEAT B/R WHT/GRY	1781444	①
06	4	EA	BRACKET, 2" x 2" x 12"	1030428	
07	13	FT	TRIM, EDGE WHITE FLEX "U" TRIM	1757260	②
08	1	EA	THRU-HULL, PLAS 1 1/8" TUBE X 90DEG	1043371	
09	1	EA	DRAIN, SCREEN ONLY 7/8" x 12"	1043348	
10	6	EA	SCREW, TAPPING #6 X 3/4" PFH	1010370	
11	1	EA	FIBERGLASS PART, LIVEWELL DROP-IN	22J87500	
12	12	EA	SCREW, MACH 1/4-20 x 1" PFH	1009950	
13	12	EA	WASHER, FINISH #12 SS	0958868	
14	16	EA	NUT, LOCK 1/4-20	1009786	
15	8	EA	SCREW, MACH #10-24 x 3/4" POH	1008440	
16	8	EA	WASHER, FLAT #10 SS	0152918	
17	8	EA	NUT, HEX NYLON LOCK #10-24	1007772	
18	4	EA	SCREW, MACH #6-32 x 1" PFH	1010172	
19	4	EA	WASHER, FLAT #6 SS	0153858	
20	4	EA	NUT, LOCK #6-32	1009810	
21	11	EA	SCREW, TAPPING #6 x 1/2" PFH	1010362	
22	8	EA	SNAP STUD, #8 x 3/8" PH	0203786	①
23	4	EA	SCREW, MACH 1/4-20 x 1" PPH	1008580	
24	4	EA	WASHER, FLAT 1/4" SS	0152926	
25	6	FT	HOSE, WATER 1 1/8" BLK	1042076	②
26	2	EA	CLAMP, HOSE #16 3/4-1.5" SS	0256685	
27	1	EA	PUMP, SPRAY HEAD FOR LIVEWELL AERATOR	0858944	
28	1	EA	TRIM, HDPE BW14/160DA-00 LIVEWELL	1331768	
29	1	EA	LATCH, DRAW SOFT-LATCH 4"	1364058	
30	1	EA	SCREW, TAPPING #10 X 1" POH	1008507	
31	2	EA	NUT, LOCK 8-32 SC	1009927	
32	2	EA	WASHER, FLAT #8 SS	152900	
33	2	EA	SCREW, MACHINE #8-32 X 3/4" PTH SC	1010735	
34	1	EA	TUBING, PVC 7/8" OD X 1" LONG	1235704	②
35	1	EA	PLATE, BWDA-01 REV SEAT SS	1566272	②
36	1	EA	BRACKET, BWDA-01 REV SEAT SS/DELTRIN	1566280	②
37	1	EA	DRAIN, STANDPIPE ONLY 7/8" X 12"	1583053	②



INTERPRET DIMENSIONS AND TOLERANCES PER ANSI Y 14.5 UNLESS OTHERWISE SPECIFIED DIMENSIONS ARE IN INCHES.
 TOLERANCES: ANGLES = ± .5° .XXX = ± .010
 .X = ± .1 .X = ± 1/16
 .XX = ± .03 X = ± 1/16
 DO NOT SCALE DRAWING



CHECKED: L. SCHOLZ	DATE: 3/5/99	DRAWN: R DURHAM	DATE: 03/05/99	SCALE: NONE	BOAT MODEL 160DA	MOLD NO. 18J90205
APPD: S. WOOD	DATE: 3/5/99	DWG. TITLE: REVERSIBLE PILOT SEAT			INIT. REL. ECN NO:	DWG. NO: 09250
DESIGN: J. MILLER	DATE: 3/5/99					SHT. NO. 1 OF 1
INT. ENG: L. SCHOLZ	DATE: 3/5/99					

THIS DOCUMENT IS THE PROPERTY OF BOSTON WHALER, INC. MFG. DEPT., EDGEWATER, FLORIDA. ALL RIGHTS ARE RESERVED. THIS DOCUMENT AND INFORMATION CONTAINED MUST NOT BE COPIED OR DISCLOSED TO OTHERS WITHOUT WRITTEN PERMISSION OF BOSTON WHALER, INC.

DWG. NO:
08601

REV.
-

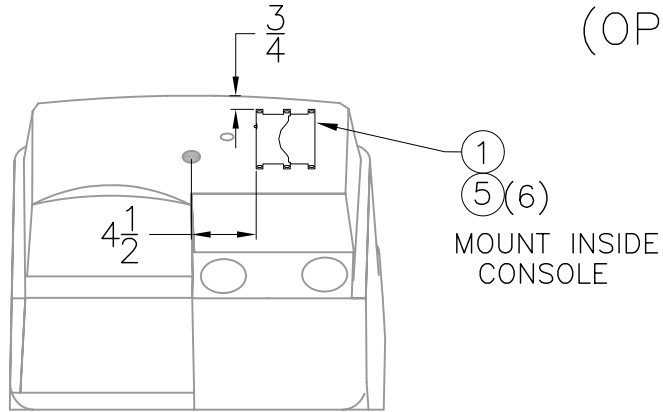
CURRENT ECD
060584

NOTES:

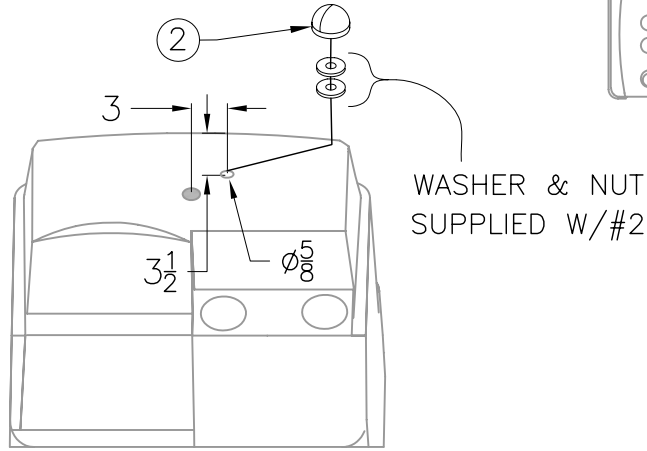
1. ITEM 3&4 TO BE PLACED IN OWNER'S BAG

REVISIONS					
REV.	DESCR.	BY	DATE	APPVD.	ECN NO.

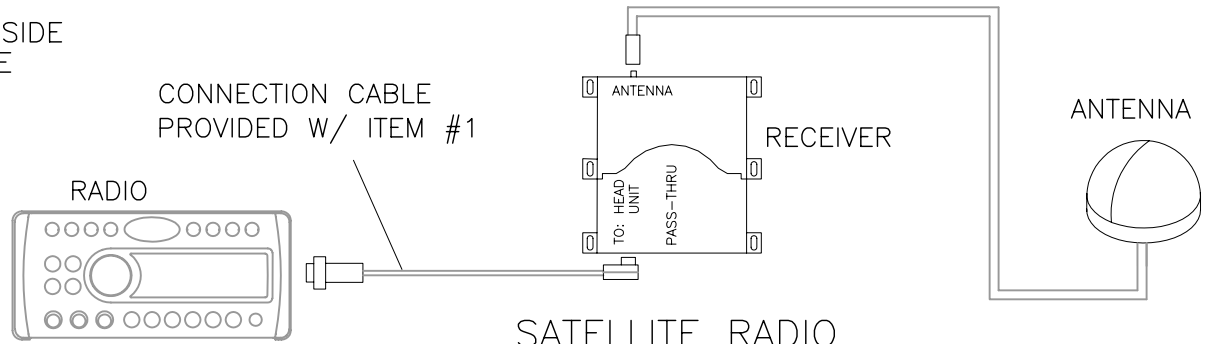
SATELLITE RADIO (OPTION: 100-75669)



1
5(6)
MOUNT INSIDE
CONSOLE



TOP VIEW



CONNECTION CABLE
PROVIDED W/ ITEM #1

RADIO

RECEIVER

ANTENNA

SATELLITE RADIO
WIRE DIAGRAM

PARTS LIST

ITEM	QTY.	U/M	DESCRIPTION	B.W.I. NO.
1	1	EA.	STEREO, SIRIUS SATELLITE RCVR SIRCL3M-6MO	1847461
2	1	EA.	ANTENNA, SHAKESPEARE SATELLITE RADIO ANTENNA	1757933
3	1	EA.	PACKET, SIRIUS WELCOME KIT	1766115
4	1	EA.	DECAL, SIRIUS "NOW PLAYING INSIDE"	1806416
5	6	EA.	SCREW, TAPPING #8A X 5/8" PTH SC	1010925

INTERPRET DIMENSIONS AND TOLERANCES PER ANSI Y 14.5
UNLESS OTHERWISE SPECIFIED DIMENSIONS ARE IN INCHES.
TOLERANCES: ANGLES = ± .5° .XXX = ± .010
.X = ± .1 .XX = ± .03 X = ± 1/16
DO NOT SCALE DRAWING



CHECKED: NA	DATE: 5/31/06	DRAWN: S. HIESTER	DATE: 5/25/06	SCALE: NONE	BOAT MODEL 160DA07	MOLD NO.
APPD: RA	DATE: 6/1/06	DWG. TITLE: SATELLITE RADIO			INIT. REL. ECN NO: 060584	DWG. NO: 08601
DESIGN: VPK	DATE: 5/31/06				SHT. NO. 1 of 1	
INT. ENG: MG	DATE: 5/31/06					

THIS DOCUMENT IS THE PROPERTY OF BOSTON WHALER, INC. MFG. DEPT., EDGEWATER, FLORIDA. ALL RIGHTS ARE RESERVED. THIS DOCUMENT AND INFORMATION CONTAINED MUST NOT BE COPIED OR DISCLOSED TO OTHERS WITHOUT WRITTEN PERMISSION OF BOSTON WHALER, INC.

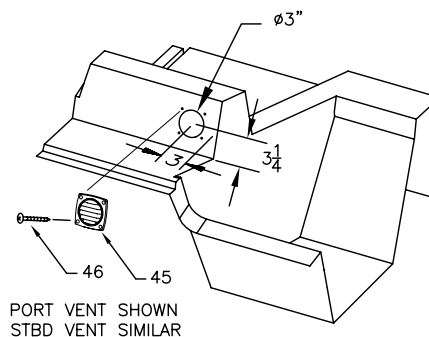
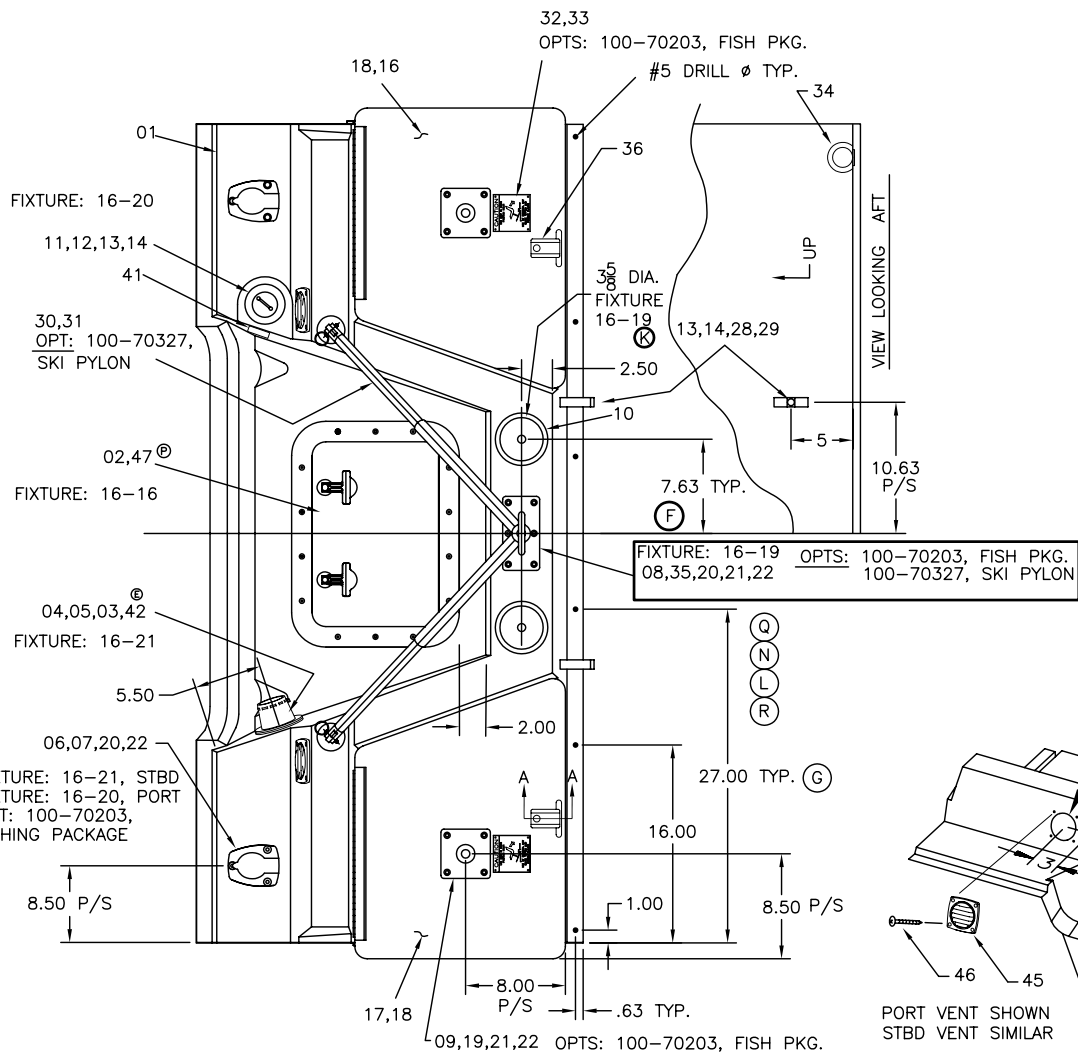
DWG. NO:
09100

REV.
U

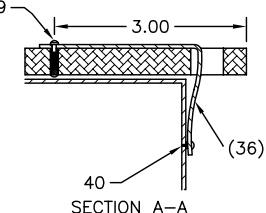
CURRENT ECD
0604144

NOTES:

REVISIONS					
REV.	DESCR.	BY	DATE	APPVD.	ECN NO.
T	CHANGED #30 DESCRIPTION & PART NO.	JC	02/03/06	ME	060122
U	#22 WAS 1007764	SWH	05/25/06	AVM	0604144



BILL OF MATERIAL				
ITEM	QTY.	U/M	DESCRIPTION	B.W.I. NO.
01	1	EA	STERNDECK, FRP PART	22-J870-00
02	1	EA	HATCH, UTILITY 13.5"X 16.5" WHT	1719060
03	6	EA	RIVET, POP/BLIND 3/16 x 5/8" ALUM	0189415
04	1	EA	BOOT, CABLE 3" BLK	1043223
05	1	EA	BOOT, CABLE RING 3" BLK	1043330
06	2	EA	HOLDER, ROD FLUSH MNT W/CAP/B	1331636
07	6	EA	SCREW, MACH 1/4-20 x 1.5" POH	0151639
08	1	EA	BASE, BW-05 FISH PED 3"X 6" THREADED SS	1771159
09	2	EA	BASE, FISH PED 4 x 4" SS	1076959
10	2	EA	DRINKHOLDER, PLAS W/DRAIN DEEP XLG SZ	1727419
11	1	EA	DECK FILL, GAS SS 30DEG ANGLE	858449
12	4	EA	SCREW, MACH #10-24 x 3/4" POH	1008440
13	6	EA	WASHER, FLAT #10 SS	0152918
14	6	EA	NUT, HEX NYLON LOCK #10-24	1007772
15	2	EA	THRU-HULL, PLAS L-FLANGE W/BARB	1072826
16	1	EA	BASE, HDPE QTR SEAT PORT	1171669
17	1	EA	BASE, HDPE QTR SEAT STBD	1171677
18	12	EA	SCREW, TAPPING #6 x 3/4" POH	1008564
19	8	EA	SCREW, MACH 1/4-20 x 1.25" POH	0151621
20	8	EA	WASHER, FLAT 1/4" SS	0152926
21	12	EA	WASHER, FENDER 1/4 x 1.25" SS	0189365
22	20	EA	NUT, LOCK #1/4-20 SC STD PATT	1009786
23	1	EA	SCREW, TAPPING #8 x 5/8" PTH	1010925
24	2	EA	ELBOW, BRASS 90DEG STREET 1/4"	0140418
25	1	EA	PLUG, BRASS 1/4MPT	0172346
26	1	EA	FILTER, IN-LINE FUEL/WTR SEPARATOR	1033695
27	2	EA	FITTING, BRASS 1/4MPT x 3/8" BARB	1043397
28	1	PR	CLIP, POLE STRG BLACK	0590646
29	2	EA	SCREW, MACH #10-24 x 1.25" PPH	1008630
30	1	EA	SKI TOW PYLON, BW-06 31" W/30" LEGS 316SS	1819612
31	1	EA	LABEL, WARNING SKI PYLON	1016914
32	2	EA	PLATE, CAUTION SEAT	1230135
33	8	EA	SCREW, TAPPING #6A X 1/2" PTH	1008796
34	2	EA	THRU-HULL, PLAS 1.5" L-FLANGE W/BARB	1072826
35	6	EA	SCREW, MACHINE #1/4-20 X 1.25" PPH SS	153205
36	2	EA	STRAP, BW170DA-97 W/S HOLD OPEN	1025220
37	2	EA	NUT, BBL #10-24 X 1/2" TH	1040203
38	2	EA	WASHER, FINISH #10 SS	896258
39	2	EA	SCREW, MACHINE #10-24 X 5/8" POH SC	1010545
40	2	EA	SNAP STUD, W/#8 X 3/8" PH BR/NI/SS	203786
41	1	EA	PLATE, WARNING FUEL HAZARD	995704
42	1	EA	GROMMET, CABLE BOOT 3" BLK	1574839
43	1	EA	LIGHT, NAV STERN BASE RND CHR	321751
44	1	EA	LIGHT, NAV A/R STERN 62"N/BEND FOLDNG	1604396
45	2	EA	VENT, LOUVERED 3 5/8" X 3 5/8" WHT	819243
46	8	EA	SCREW, TAPPING #8A X 3/4" POH SC	1213057
47	14	EA	SCREW, MACHINE #10-24 X 3/4" PPH SC SELF-TAP	1781122



INTERPRET DIMENSIONS AND TOLERANCES PER ANSI Y 14.5 UNLESS OTHERWISE SPECIFIED DIMENSIONS ARE IN INCHES.
TOLERANCES: ANGLES = ± .5° .XXX = ± .010
.X = ± .1 X = ± 1/16
.XX = ± .03 X = ± 1/16
DO NOT SCALE DRAWING



CHECKED: S. WOOD	DATE: 9/22/98	DRAWN: R. DURHAM	DATE: 09/22/98	SCALE: NONE	BOAT MODEL	MOLD NO.
APPD: M. MITCHELL	DATE: 03/02/01	DWG. TITLE:			160DA	
DESIGN: S. WOOD	DATE: 9/22/98	STERNDECK ASSEMBLY			INIT. REL. ECN NO:	DWG. NO:
INT. ENG: L. SCHOLZ	DATE: 9/22/98				R9000	09100
					SHT. NO.	
					1	OF 1

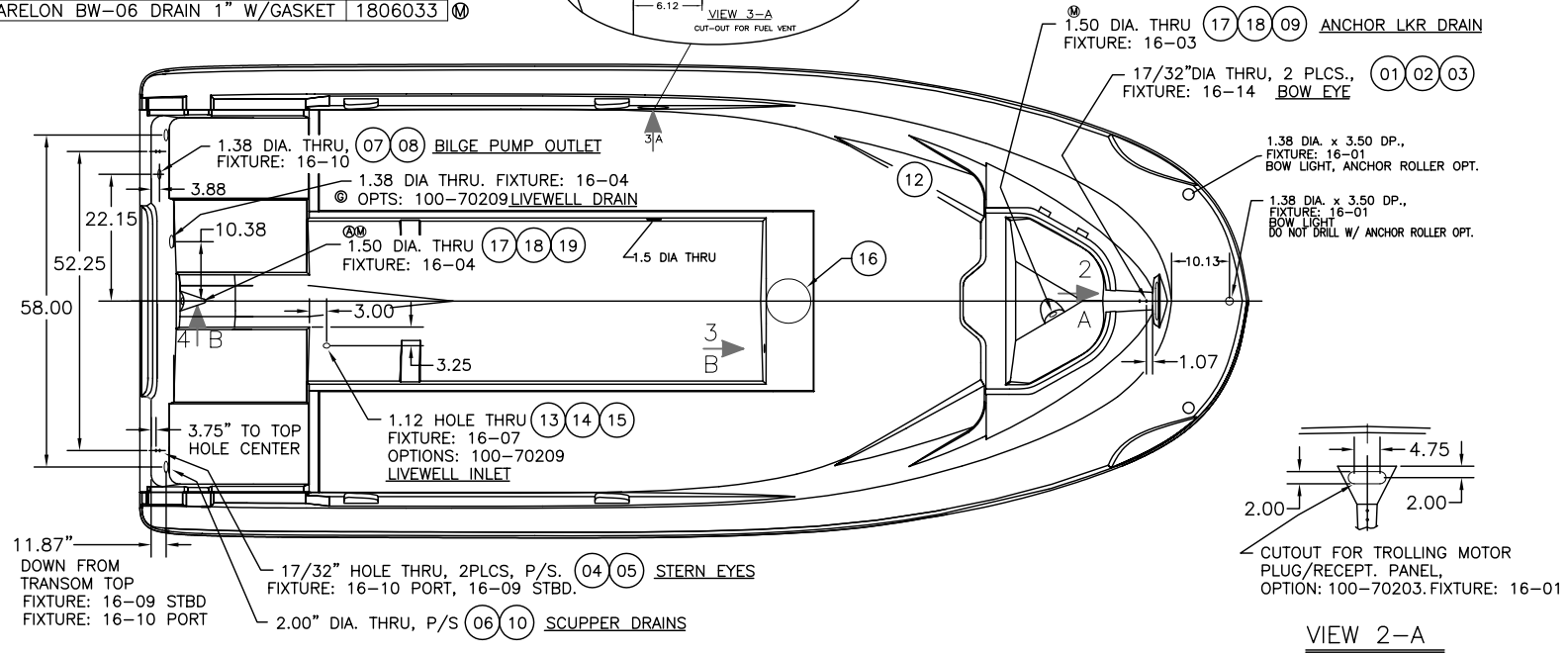
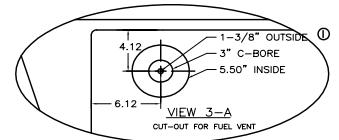
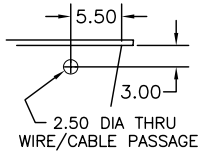
THIS DOCUMENT IS THE PROPERTY OF BOSTON WHALER, INC. MFG. DEPT., EDGEWATER, FLORIDA. ALL RIGHTS ARE RESERVED. THIS DOCUMENT AND INFORMATION CONTAINED MUST NOT BE COPIED OR DISCLOSED TO OTHERS WITHOUT WRITTEN PERMISSION OF BOSTON WHALER, INC.

DWG. NO: **06101** REV. **M** CURRENT ECD **050544**

NOTES: #17 TO BE INSTALLED ON OUTBOARD FACE (2PLCS)

REVISIONS					
REV.	DESCR.	BY	DATE	APPVD.	ECN NO.
J	2004 MODEL YEAR ENHANCENMENTS	RC	05/27/03	RA	030337
K	CHANGED NUMBERING SYSTEM/ APPLY ATT. BORDER	AVM	06/16/03	ZAC	030307
L	MODIFY DRAWING BORDER TO AN ATTRIBUTED BORDER	TS	01/24/06	AVM	060132
M	7 WAS QNT 3, 8 WAS QNT 3. 9 WAS QNT 2, ADD 17-19	SWH	03/06/06		050544

BILL OF MATERIAL					
ITEM	QTY.	U/M	DESCRIPTION	B.W.I. NO.	
01	1	EA	EYE, BOW, 1/2 x 6" SS	995472	
02	1	EA	EYE, LIFTING 1/2" SS	1750949	Ⓜ
03	1	EA	NUT, ACORN, 1/2-13 SS	1007756	
04	2	EA	EYE, STERN, 1/2 x 3" SS	0995464	
05	4	EA	NUT, HEX NYLON LOCK, 1/2-13 SS	0152785	
06	2	EA	THRU-HULL, PLAS, 2" SCUPPER, W/FLAP	0628081	
07	1	EA	THRU-HULL, PVC, PRESS-FIT	1042084	Ⓜ
08	1	EA	NUT, PVC, RETAINING, THRU-HULL	1042068	Ⓜ
09	1	EA	PLUG, BRASS, DRAIN, 1" TURN-TITE	0133371	Ⓜ
10	8	EA	SCREW, TAPPING, #8A x 1" POH	0150805	
11	1	EA	THRU-HULL, PLAS, 1.5" DRAIN, W/FLNG	1042050	
12	1	EA	THRU-HULL, PLAS 1 1/8" X 5.5" WHT	1583061	Ⓜ
13	1	EA	PUMP, LIVEWELL	291211	
14	1	EA	STRAINER, MARELON, 3/4" SCREEN ONLY	995589	
15	4	EA	SCREW, TAPPING, #8A x 1/2" PFH	1008390	
16	1	EA	COVER, ABS, 7.75" POUR HOLE	1210756	
17	1	EA	THRU-HULL, MARELON BW-06 SHORT FEMALE	1806032	Ⓜ
18	1	EA	THRU-HULL, MARELON BW-06 SHORT MALE	1806031	Ⓜ
19	1	EA	PLUG, MARELON BW-06 DRAIN 1" W/GASKET	1806033	Ⓜ



INTERPRET DIMENSIONS AND TOLERANCES PER ANSI Y 14.5 UNLESS OTHERWISE SPECIFIED DIMENSIONS ARE IN INCHES.
 TOLERANCES: ANGLES = ± .5° .XXX = ± .010
 .X = ± .1 X = ± 1/16
 .XX = ± .03
 DO NOT SCALE DRAWING

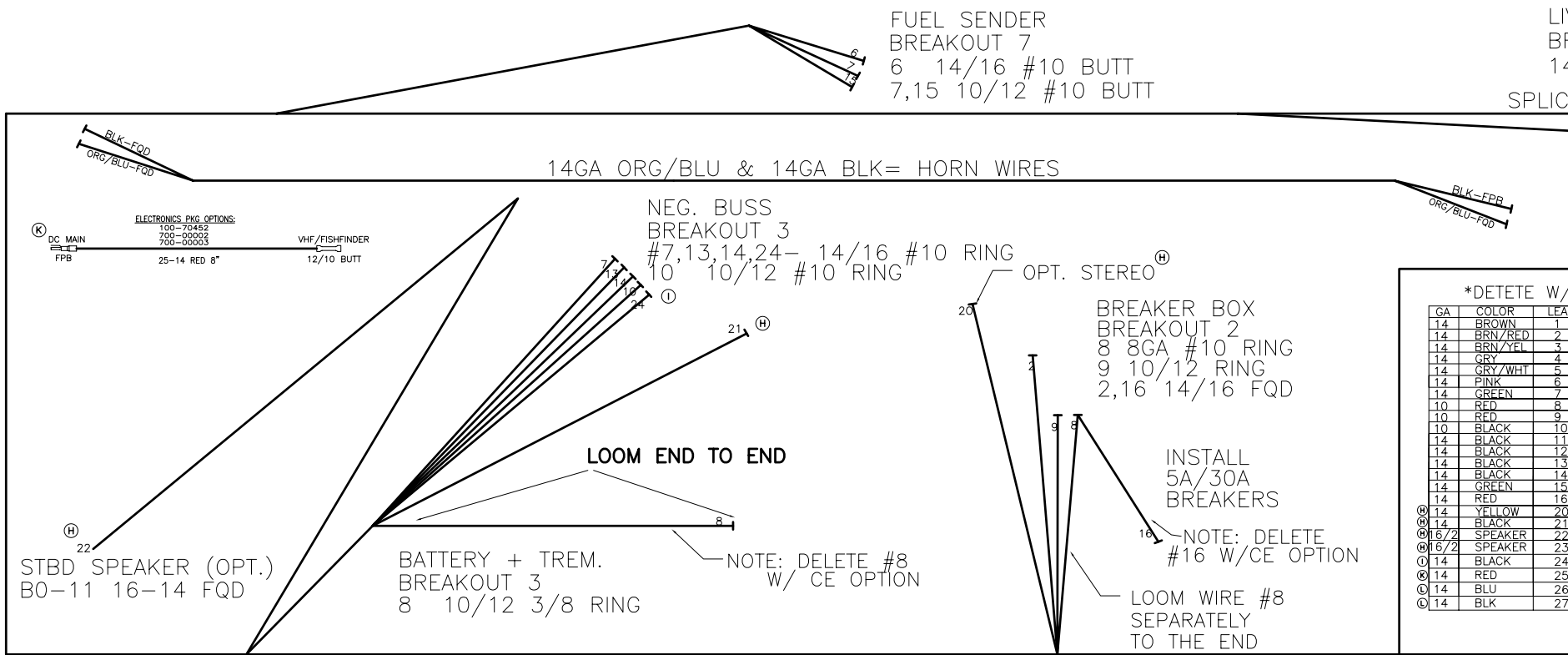
 PRODUCT DEV. & MFG. ENGINEERING GROUP	CHECKED: L. SCHOLZ	DATE: 5/19/00	DRAWN: R DURHAM	DATE: 10/01/98	SCALE: NONE	BOAT MODEL	MOLD NO.
	APPD: S. WOOD	DATE: 5/19/00	DWG. TITLE: THRU HULL LOCATIONS			160DA	18J88502
	DESIGN: S. WOOD	DATE: 5/19/00				INIT. REL. ECN NO:	DWG. NO:
	INT. ENG: L. SCHOLZ	DATE: 5/19/00					06101
						SHT. NO.	1 of 1

THIS DOCUMENT IS THE PROPERTY OF BOSTON WHALER, INC. MFG. DEPT., EDGEWATER, FLORIDA. ALL RIGHTS ARE RESERVED. THIS DOCUMENT AND INFORMATION CONTAINED MUST NOT BE COPIED OR DISCLOSED TO OTHERS WITHOUT WRITTEN PERMISSION OF BOSTON WHALER, INC.

DWG. NO:
07400

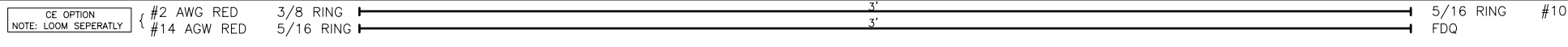
REV.
L

CURRENT ECD
050681



*DELETE W/

GA	COLOR	LEAD
14	BROWN	1
14	BRN/RED	2
14	BRN/YEL	3
14	GRY	4
14	GRY/WHT	5
14	PINK	6
14	GREEN	7
10	RED	8
10	RED	9
10	BLACK	10
14	BLACK	11
14	BLACK	12
14	BLACK	13
14	BLACK	14
14	GREEN	15
14	RED	16
Ⓜ 14	YELLOW	20
Ⓜ 14	BLACK	21
Ⓜ 16/2	SPEAKER	22
Ⓜ 16/2	SPEAKER	23
Ⓜ 14	BLACK	24
Ⓜ 14	RED	25
Ⓜ 14	BLU	26
Ⓜ 14	BLK	27



INTERPRET DIMENSIONS AND TOLERANCES PER ANSI Y 14.5 UNLESS OTHERWISE SPECIFIED DIMENSIONS ARE IN INCHES.
TOLERANCES: ANGLES = ± .5° .XXX = ± .010
.X = ± .1 X = ± 1/16
.XX = ± .03
DO NOT SCALE DRAWING

DRAWN: RAVILA DATE: 112299 SCALE: NONE
DWG. TITLE: WIRING DIAGRAM

BOAT MODEL 160DA MOLD NO.
INIT. REL. ECN NO: DWG. NO: 07400 SHT. NO. 2 of 3

THIS DOCUMENT IS THE PROPERTY OF BOSTON WHALER, INC. MFG. DEPT., EDGEWATER, FLORIDA. ALL RIGHTS ARE RESERVED. THIS DOCUMENT AND INFORMATION CONTAINED MUST NOT BE COPIED OR DISCLOSED TO OTHERS WITHOUT WRITTEN PERMISSION OF BOSTON WHALER, INC.

DWG. NO:
07400

REV.
L

CURRENT ECD
050681

LIVWELL PUMP
BREAKOUT 5
14/16 BUTT
SPLICE A

BILGE PUMP
BREAKOUT 6
1 10/12 BUTT
2,12 14/16 BUTT

16 DAUNTLESS
1 of 1
10/9/00

NAV LIGHTS
BREAKOUT 4
NO ENDS

NAV LIGHTS
BREAKOUT 9
NO ENDS

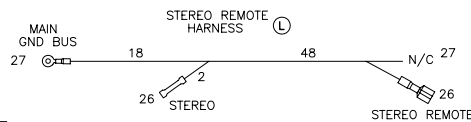
Ⓜ STEREO OPT.
20 YEL 16-14 BUTT
21 BLK 16-14 BUTT
22 SPK 16-14 BUTT
23 SPK 16-14 BUTT

FUEL FILL BOND
BREAKOUT 8
15 #10 RING

MARK W/RED TAPE

PORT SPEAKER (OPT.) Ⓜ
BO-10 16-14 FQD
MARK W/RED TAPE

SWITCH PANEL
BREAKOUT 1
1,3,4,5 14/16 FQD
6 None
9,10 10/12 BUTT



*DETETE W/CE

GA	COLOR	LEAD	FROM	TO
14	BROWN	1	BO-1	BO-6
14	BRN/RED	2	BO-2	BO-6
14	BRN/YEL	3	BO-1	BO-5
14	GRY	4	BO-1	BO-9
14	GRY/WHT	5	BO-1	BO-4
14	PINK	6	BO-1	BO-7
14	GREEN	7	BO-3	BO-7
10	RED	8	BO-2	BO-3
10	RED	9	BO-1	BO-2
10	BLACK	10	BO-1	BO-3
14	BLACK	11	BO-5	SPL-A
14	BLACK	12	BO-6	SPL-A
14	BLACK	13	SPL-A	BO-3
14	BLACK	14	BO-4	BO-3
14	GREEN	15	BO-7	BO-8
14	RED	16	BO-3	BO-3
Ⓜ 14	YELLOW	20	BO-2	BO-1
Ⓜ 14	BLACK	21	BO-1	BO-3
Ⓜ 16/2	SPEAKER	22	BO-1	BO-9
Ⓜ 16/2	SPEAKER	23	BO-1	BO-10
Ⓜ 14	BLACK	24	BO-3	BO-9
Ⓜ 14	RED	25	Elec. Pkg. Option	
Ⓜ 14	BLU	26	STEREO OPT.	
Ⓜ 14	BLK	27	STEREO OPT.	

5/16 RING #10 AGW RED 5/16 RING
FDQ

#10 RING 3'



INTERPRET DIMENSIONS AND TOLERANCES PER ANSI Y 14.5 UNLESS OTHERWISE SPECIFIED DIMENSIONS ARE IN INCHES.
TOLERANCES: ANGLES = ± .5° .XXX = ± .010
.X = ± .1 X = ± 1/16
.XX = ± .03
DO NOT SCALE DRAWING

DRAWN: RAVILA DATE: 112299 SCALE: NONE
DWG. TITLE:
WIRING DIAGRAM

BOAT MODEL
160DA

MOLD NO.

INIT. REL. ECN NO:

DWG. NO:
07400

SHT. NO.

3 of 3