

THIS DOCUMENT IS THE PROPERTY OF BOSTON WHALER, INC. MFG. DEPT., EDGEWATER, FLORIDA. ALL RIGHTS ARE RESERVED. THIS DOCUMENT AND INFORMATION CONTAINED MUST NOT BE COPIED OR DISCLOSED TO OTHERS WITHOUT WRITTEN PERMISSION OF BOSTON WHALER, INC.

DWG. NO: 09402	REV. B	CURRENT ECD 08125664
--------------------------	------------------	--------------------------------

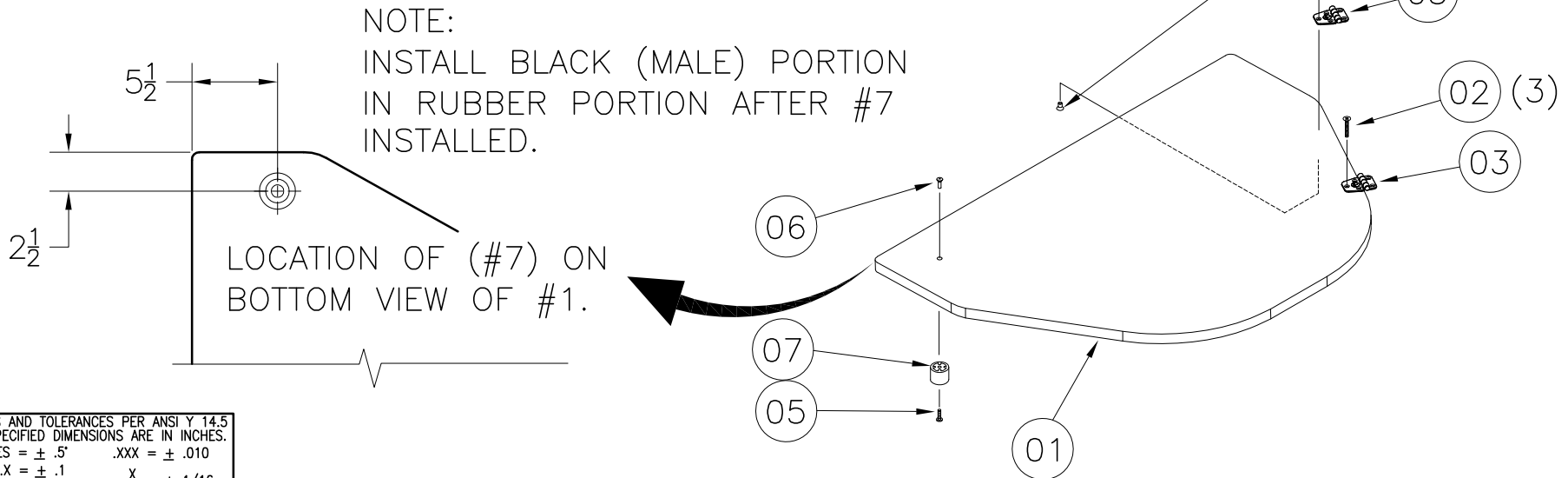
NOTES:

- REFER TO DWG. 16114 FOR FLANGE TRIM DETAILS.
- ALL FASTENERS SHALL BE SEALED AT INSTALLATION USING WHITE SILICONE SEALANT. BARREL NUT ENDS SHALL BE SEALED AND SMOOTHED OVER AFTER HINGES HAVE BEEN INSTALLED.
- REFER TO DWG. 05114 FOR LAMINATION DETAILS.

REVISIONS					
REV.	DESCR.	BY	DATE	APPVD.	ECN NO.
A	CHANGED PT#1040187 TO 1689417	TJ	1/12/09	AF	08125649
B	CHANGED PT#1008440 TO 1010545 & ADDED 1008705, DELETED 1260751	TJ	2/3/09	AF	08125664

PARTS LIST					
ITEM	QTY	U/M	DESCRIPTION	B.W.I.	NO.
1	1	EA.	FIBERGLASS PART, ANCHOR LOCKER COVER	22-K264-00	
Ⓑ 2	6	EA.	SCREW, MACHINE #10-24 X 5/8" POH SC	1010545	
3	2	EA.	HINGE, DOOR SS 1.5" X 3" THINLINE	1617323	
Ⓐ 4	6	EA.	NUT, BBL #10-24 X 1/4" FH	1689417	
Ⓑ 5	1	EA.	SCREW, MACHINE #10-24 X 3/4" PTH SC	1008705	
6	1	EA.	NUT, BBL #10-24 X 3/8" TH CHR/BR	1040211	
7	1	EA.	STOP, DOOR HOLDER RBR BLK	1142348	

06-08 MODELS USED 1040187



INTERPRET DIMENSIONS AND TOLERANCES PER ANSI Y 14.5 UNLESS OTHERWISE SPECIFIED DIMENSIONS ARE IN INCHES.
 TOLERANCES: ANGLES = ± .5° .XXX = ± .010
 .X = ± .1 X = ± 1/16
 .XX = ± .03 X = ± 1/16
 DO NOT SCALE DRAWING



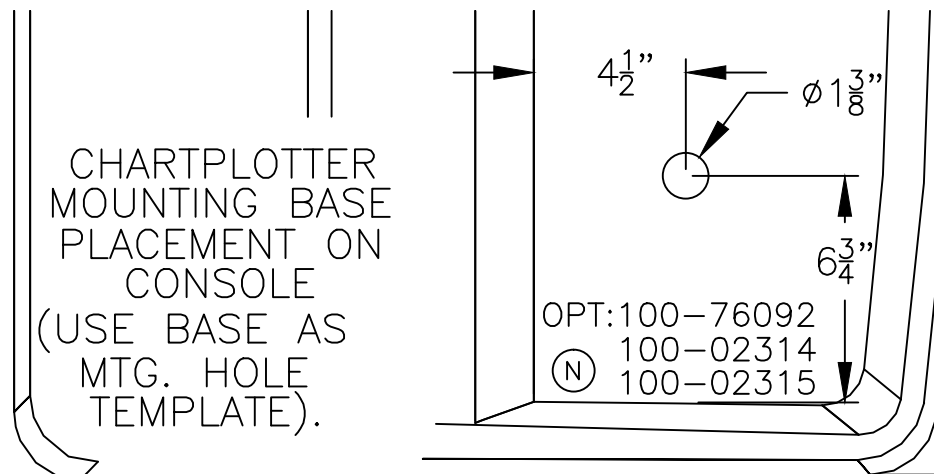
CHECKED: R. AVILA	DATE: 10/11/05	DRAWN: J. HALPIN	DATE: 10/10/05	SCALE: NONE	BOAT MODEL 150MT	MOLD NO. 22K26400
APPD: K. RANIERI	DATE: 10/11/05	DWG. TITLE: ANCHOR LOCKER SUB-ASSY.			INIT. REL. ECN NO: 050577	DWG. NO: 09402
DESIGN: V. KNIGHT	DATE: 10/11/05				SHT. NO. 1 OF 1	
INT. ENG: M. GATICA	DATE: 10/13/05					

THIS DOCUMENT IS THE PROPERTY OF BOSTON WHALER, INC. MFG. DEPT., EDGEWATER, FLORIDA. ALL RIGHTS ARE RESERVED. THIS DOCUMENT AND INFORMATION CONTAINED MUST NOT BE COPIED OR DISCLOSED TO OTHERS WITHOUT WRITTEN PERMISSION OF BOSTON WHALER, INC.

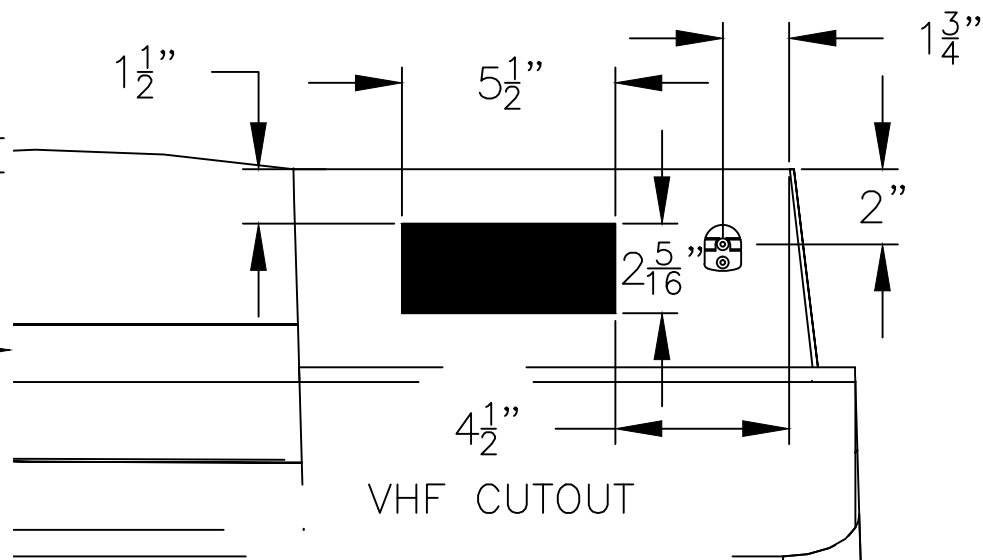
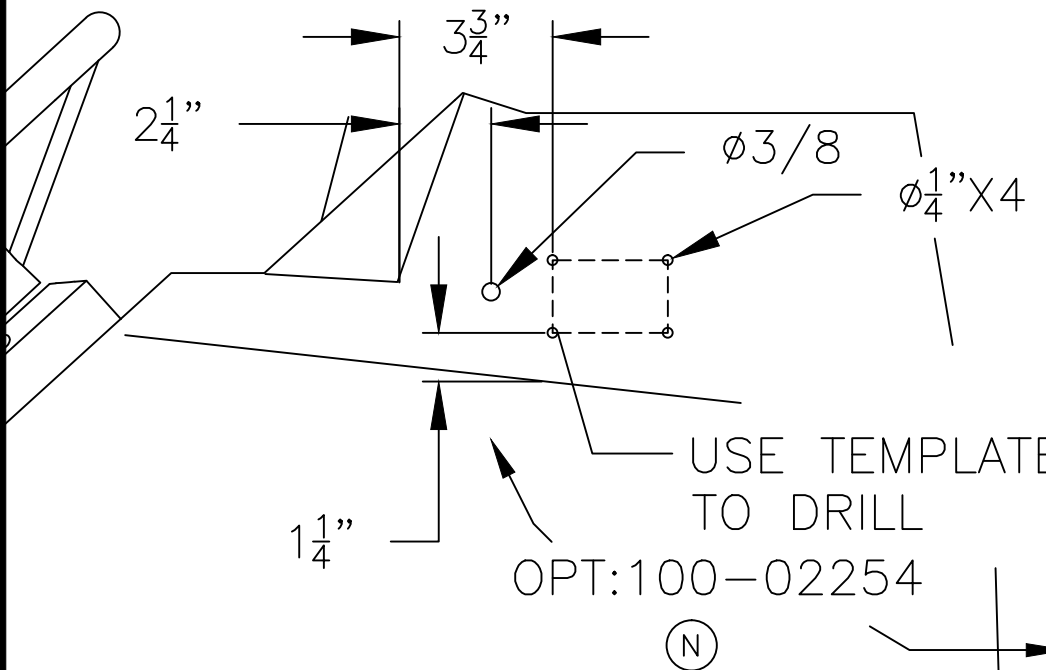
DWG. NO: 08401
 REV. 0
 CURRENT ECD 12119175

REVISIONS					
REV.	DESCR.	BY	DATE	APPVD.	ECN NO.
L	NEW ELECTRONICS OPTIONS AND DETAILS. RE-NUMBERED AND CLEANED UP PRINT FOR WYE 2010.	SBL	03/24/09	BL	09035867
M	CHANGED 1887082 WITH 2017952	SG	03/23/10	ST	10036640
N	ADDED OPTION NUMBERS, SHEET 1	SLJ	09/22/10	MAE	10097205
O	REPLACE RAYMARINE 5.7 NAV PKG WITH RAYMARINE 5.7 A67	CK	12/11/12	JK	12119175

NOTES:
 1. SEE DWG. 01-300 FOR TIE CABLES & TIE BLOCKS P/N & STANDARDS.

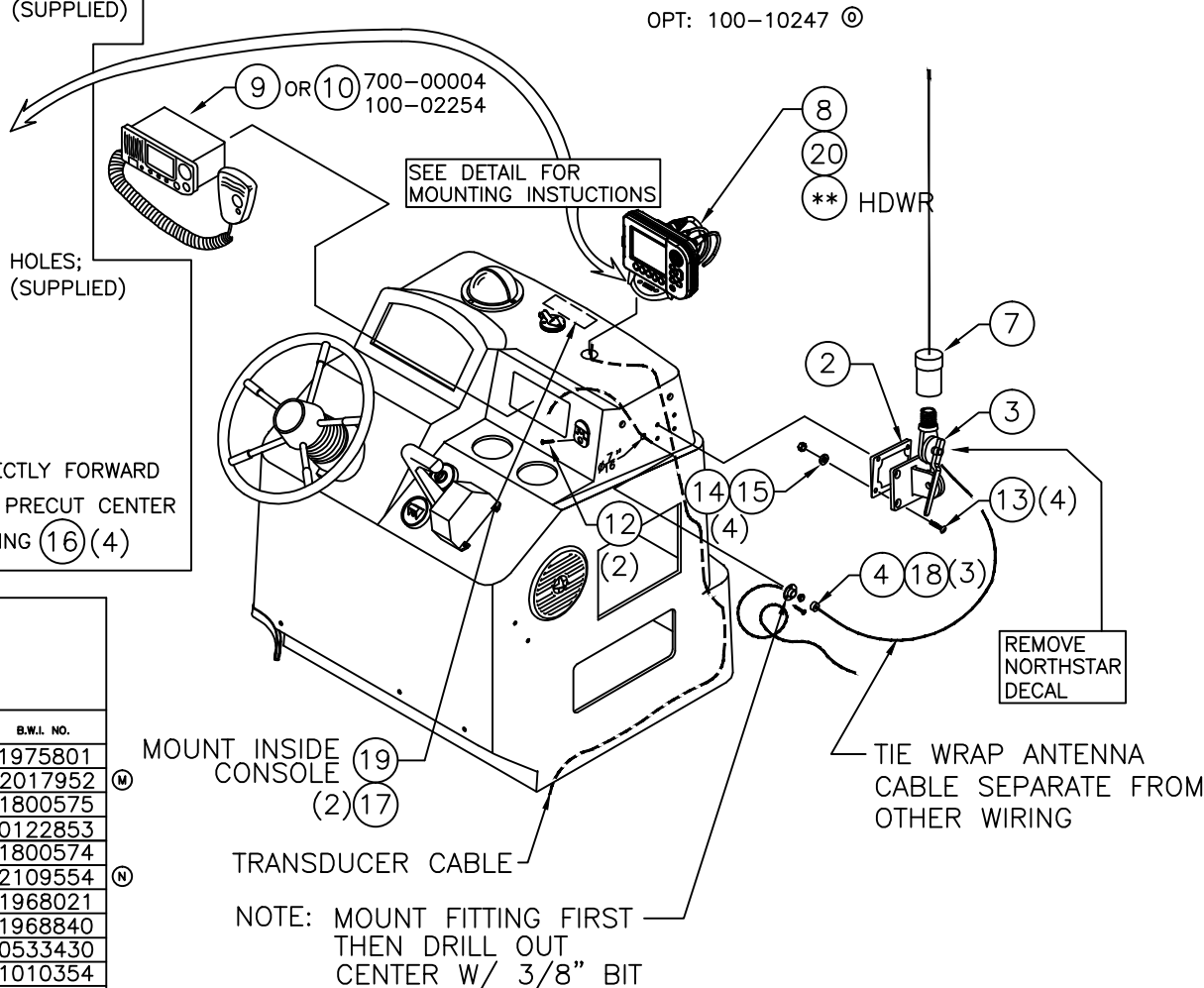
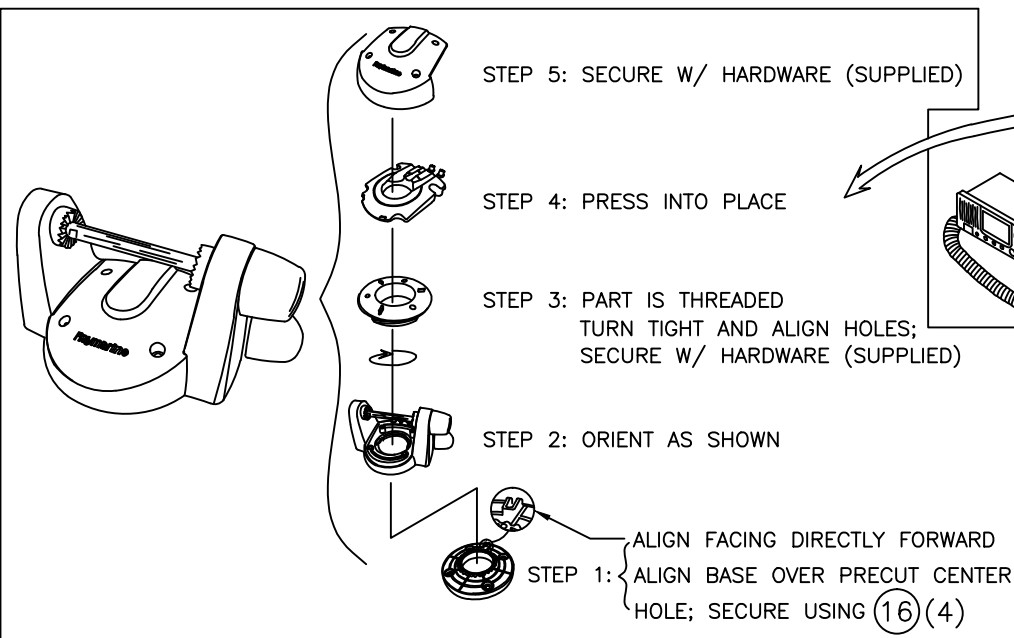


SEE SHEET 2 FOR MOUNT ASSY DETAIL



INTERPRET DIMENSIONS AND TOLERANCES PER ANSI Y 14.5 UNLESS OTHERWISE SPECIFIED DIMENSIONS ARE IN INCHES.
 TOLERANCES: ANGLES = ± .5° .XXX = ± .010
 .X = ± .1 .XX = ± .03
 X = ± 1/16
 DO NOT SCALE DRAWING

 PRODUCT DEV. & MFG. ENGINEERING GROUP	CHECKED: R. AVILA	DATE: 10/19/05	DRAWN: HAL READ	DATE: 10/19/05	SCALE: NONE	BOAT MODEL	MOLD NO.
	APPD: K. RANIERI	DATE: 10/19/05	DWG. TITLE:			150MT	
	DESIGN: V. KNIGHT	DATE: 10/19/05	ELECTRONICS PACKAGE			INIT. REL. ECN NO:	DWG. NO:
	INT. ENG: M. GATICA	DATE: 10/19/05				050577	08401



100 76092 ©
100 02314
100 02315
100 02254
700-00004

PARTS LIST

ITEM	QTY.	QTY.	QTY.	QTY.	QTY.	U/M	DESCRIPTION	B.W.I. NO.
1	1	1	1	-	-	EA.	HARNESS, A-SERIES POWER/NMEA EXTENSION	1975801
2	-	-	-	1	-	EA.	SHIM, HDPE NAVMAN ANTENNA 5/8" BASE 3DEG WHT	2017952
3	-	-	-	1	-	EA.	MOUNT, RATCHET VHF 1850 NYLON QUICK-FIT	1800575
4	-	-	-	1	-	EA.	FITTING, WATER TIGHT OUTLET FOR 5/16" CABLE	0122853
7	-	-	-	1	-	EA.	ANTENNA, VHF 1770 N/CBL MNT 4.2QUIK FIT	1800574
8	1	-	-	-	-	EA.	CHART PLOTTER, A50D 5" FF-(US) COASTAL	2109554
9	-	-	-	1	-1	EA.	RADIO, VHF RAYTHEON RAY 49 GRV	1968021
10	-	-	-	-	1	EA.	RADIO, VHF RAYTHEON RAY 49E GRV	1968840
11	1	1	1	-	-	EA.	VENT, CLAMSHELL ROPE LCKR 2"X2"	0533430
12	3	3	3	2	-	EA.	SCREW, TAPPING #6A X 1" PFH SC	1010354
13	-	-	-	4	-	EA.	SCREW, MACHINE #1/4-20 X 1.75" POH SC	0133744
14	-	-	-	4	-	EA.	NUT, LOCK #1/4-20 SC STD PATT	1009786
15	-	-	-	4	-	EA.	WASHER, FLAT #1/4" SC	1260769
16	4	4	4	-	-	EA.	SCREW, TAPPING #10A X 1" PTH SC	1008739
17	5	5	5	-	-	EA.	SCREW, TAPPING #10A X 1.5" PTH SC	1008747
18	-	-	-	3	-	EA.	SCREW, TAPPING #4A X 5/8" POH SC	1007822
19	1	1	1	-	-	EA.	BUSS BAR, 6-GANG TERMINAL STRIP	0179242
20	1	-	-	-	-	EA.	FITTING, CABLE CLAM	1780436
21	1	-	-	-	-	EA.	TRANSUDCER	2079027



INTERPRET DIMENSIONS AND TOLERANCES PER ANSI Y 14.5 UNLESS OTHERWISE SPECIFIED DIMENSIONS ARE IN INCHES.
TOLERANCES: ANGLES = ± .5° .XXX = ± .010
.X = ± .1
.XX = ± .03 X = ± 1/16
DO NOT SCALE DRAWING

DRAWN: HAL READ DATE: 10/19/05 SCALE: NONE
DWG. TITLE: ELECTRONICS PACKAGE

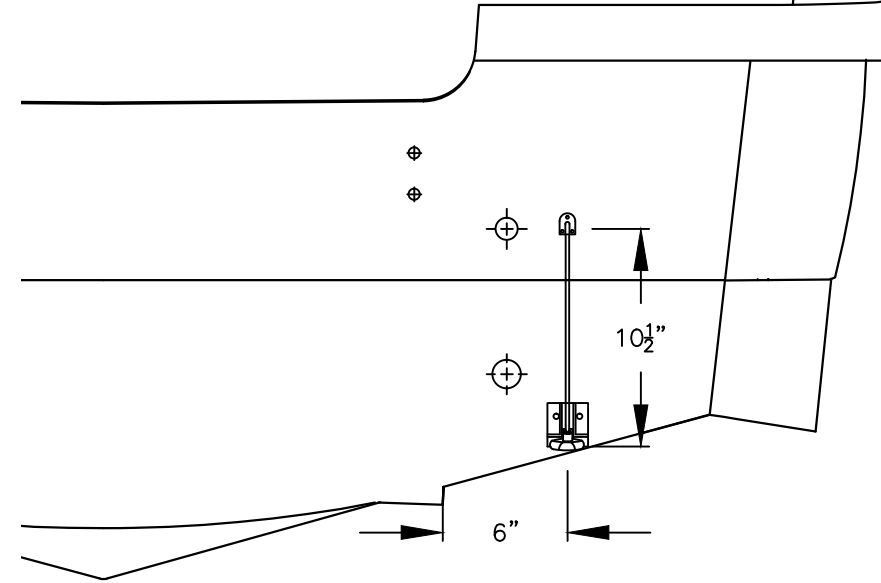
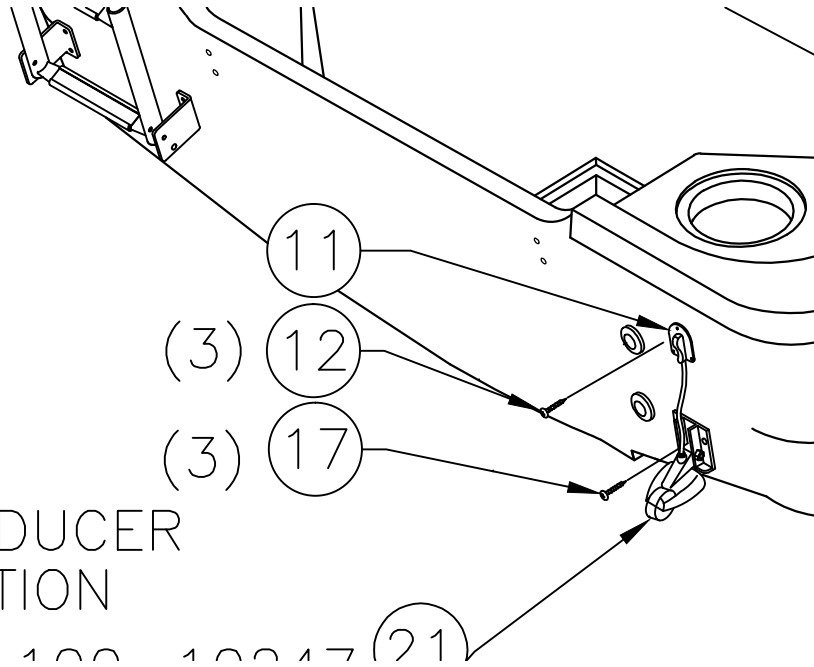
BOAT MODEL: 150MT
MOLD NO.:
INIT. REL. ECD NO: 050577
DWG. NO: 08401
SHT. NO: 2 OF 4

THIS DOCUMENT IS THE PROPERTY OF BOSTON WHALER, INC. MFG. DEPT., EDGEWATER, FLORIDA. ALL RIGHTS ARE RESERVED. THIS DOCUMENT AND INFORMATION CONTAINED MUST NOT BE COPIED OR DISCLOSED TO OTHERS WITHOUT WRITTEN PERMISSION OF BOSTON WHALER, INC.

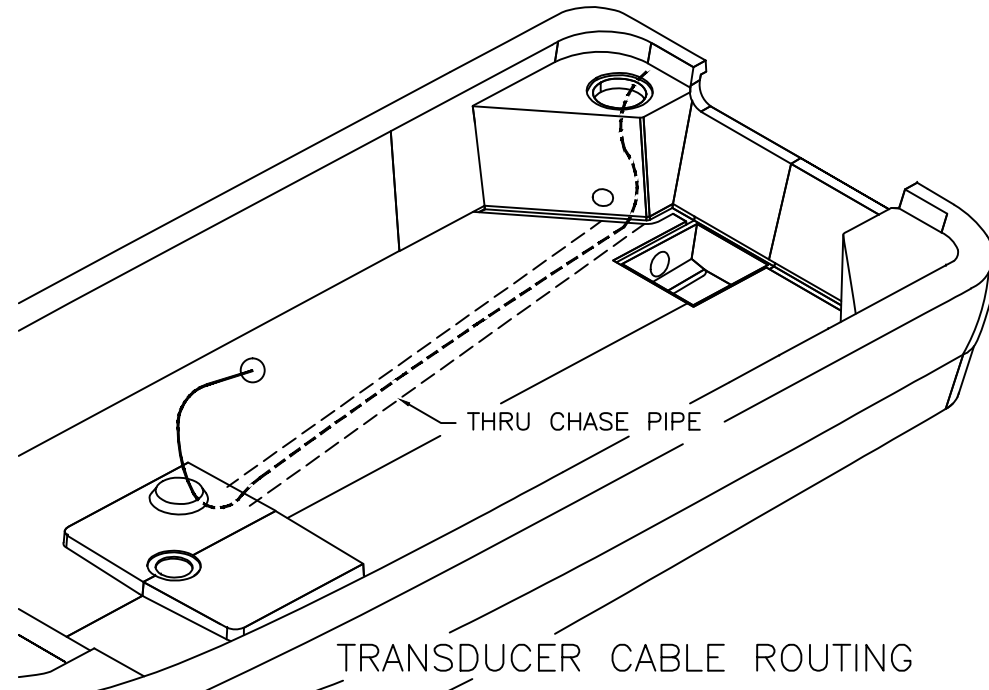
DWG. NO:
08401

REV.
0

CURRENT ECD
12119175



© TRANSDUCER LOCATION



INTERPRET DIMENSIONS AND TOLERANCES PER ANSI Y 14.5 UNLESS OTHERWISE SPECIFIED DIMENSIONS ARE IN INCHES.
 TOLERANCES: ANGLES = ± .5° .XXX = ± .010
 .X = ± .1 X = ± 1/16
 .XX = ± .03 X = ± 1/16
 DO NOT SCALE DRAWING

DRAWN: HAL READ DATE: 10/19/05 SCALE: NONE
 DWG. TITLE:
 ELECTRONICS PACKAGE

BOAT MODEL
 150MT
 INIT. REL. ECN NO:
 050577

MOLD NO.
 DWG. NO:
 08401
 SHT. NO.
 3 OF 4



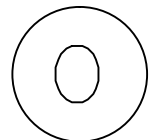
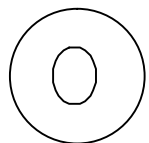
THIS DOCUMENT IS THE PROPERTY OF BOSTON WHALER, INC. MFG. DEPT., EDGEWATER, FLORIDA. ALL RIGHTS ARE RESERVED. THIS DOCUMENT AND INFORMATION CONTAINED MUST NOT BE COPIED OR DISCLOSED TO OTHERS WITHOUT WRITTEN PERMISSION OF BOSTON WHALER, INC.

DWG. NO:
08401

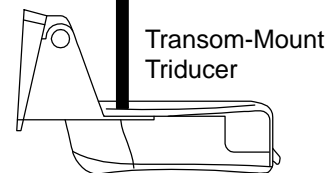
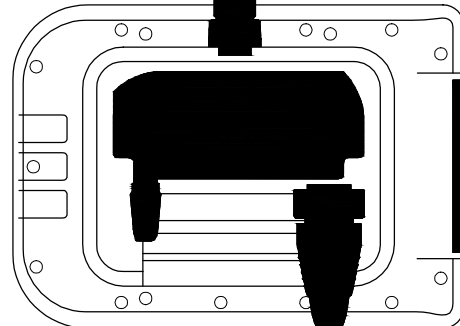
REV.
0

CURRENT ECD
12119175

OPT: 100-10247



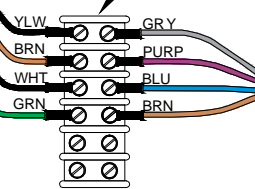
A67
Chartplotter/
Fishfinder



Transom-Mount
Triducer

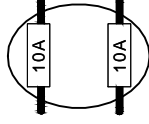
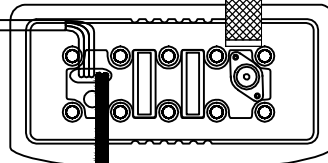
01

19



To VHF
Antenna

Ray49 VHF



VENDOR SUPPLIED

12VDC- 12VDC+



INTERPRET DIMENSIONS AND TOLERANCES PER ANSI Y 14.5 UNLESS OTHERWISE SPECIFIED DIMENSIONS ARE IN INCHES.
TOLERANCES: ANGLES = ± .5° .XXX = ± .010
.X = ± .1 .X = ± 1/16
.XX = ± .03

DO NOT SCALE DRAWING

DRAWN: HAL READ DATE: 10/19/05 SCALE: NONE
DWG. TITLE:
ELECTRONICS PACKAGE

BOAT MODEL
150MT
INIT. REL. ECN NO:
050577

MOLD NO.
DWG. NO:
08401

SHT. NO.
4 OF 4

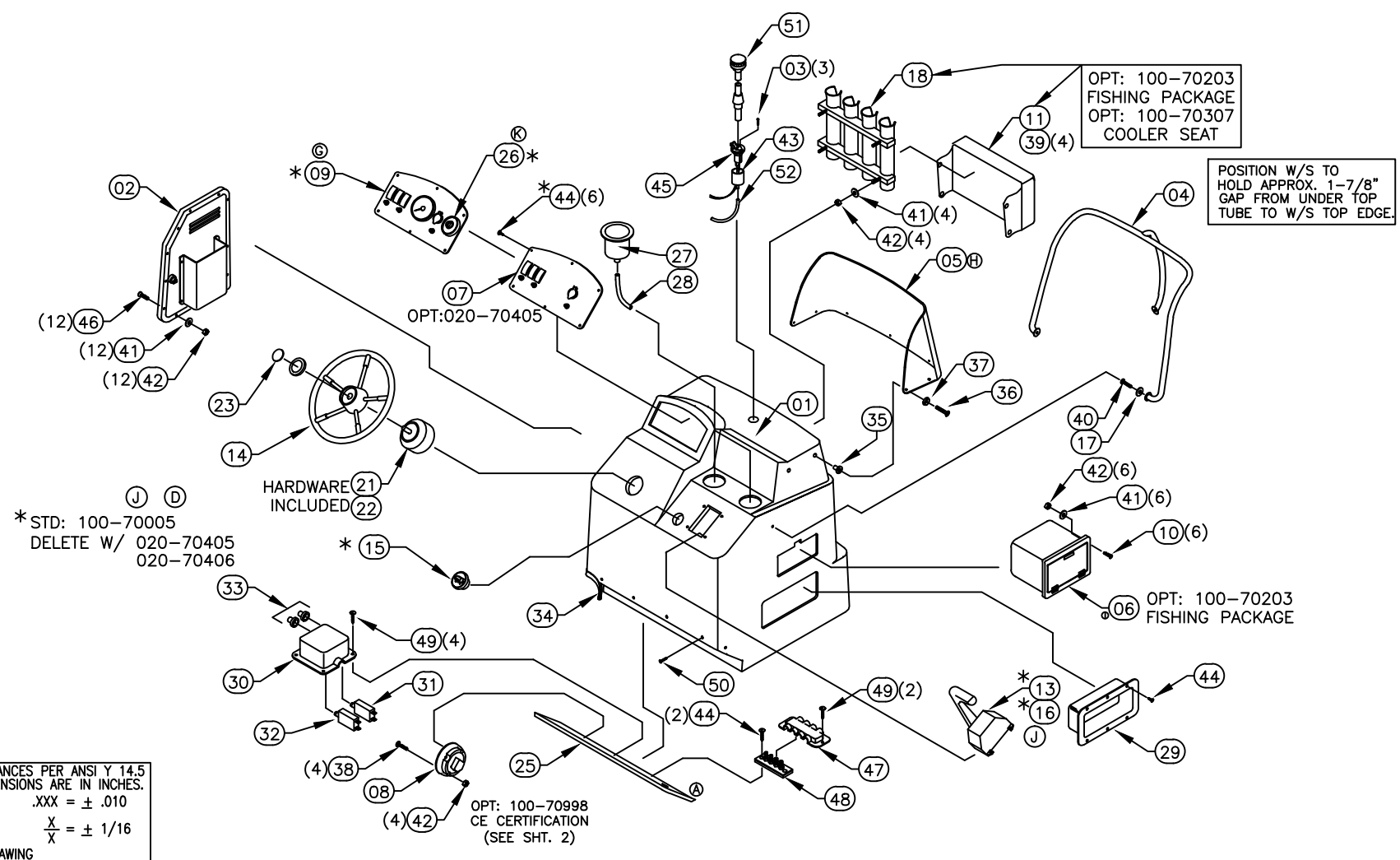
THIS DOCUMENT IS THE PROPERTY OF BOSTON WHALER, INC. MFG. DEPT., EDGEWATER, FLORIDA. ALL RIGHTS ARE RESERVED. THIS DOCUMENT AND INFORMATION CONTAINED MUST NOT BE COPIED OR DISCLOSED TO OTHERS WITHOUT WRITTEN PERMISSION OF BOSTON WHALER, INC.

DWG. NO: 09201
 REV. K
 CURRENT ECD 13029359

NOTES:

1. REF. DWG. 01201 FOR LIST OF ALL FIXTURES.
2. REF. DWG. 01251 FOR ALL HOSE CUT LENGTHS.
3. REF. DWG. 16109 FOR CONSOLE CUTOUT DETAILS.
4. REF. DWG. 05109 FOR LAM DETAILS.

REVISIONS					
REV.	DESCR.	BY	DATE	APPVD.	ECN NO.
G	REPLACED 1809674 WITH 1963295	SG	08/24/09	AVR	09035792
H	REPLACE VENDER FOR 1689418	JSD	02/17/12	JK	12028321
I	REPLACE PART # 2088018	TP	03/13/12	JK	12028334
J	CHANGED ITEM 13 P/N FROM 1752911 TO 2090266	TP	04/13/12	JK	12048490
K	CHANGED ITEM # 26 FROM #1806611 TO #1820272	ME	03/04/13	JK	13029359



INTERPRET DIMENSIONS AND TOLERANCES PER ANSI Y 14.5 UNLESS OTHERWISE SPECIFIED DIMENSIONS ARE IN INCHES.
 TOLERANCES: ANGLES = ± .5° .XXX = ± .010
 .X = ± .1 .XX = ± .03
 .XX = ± .03 X = ± 1/16
 DO NOT SCALE DRAWING

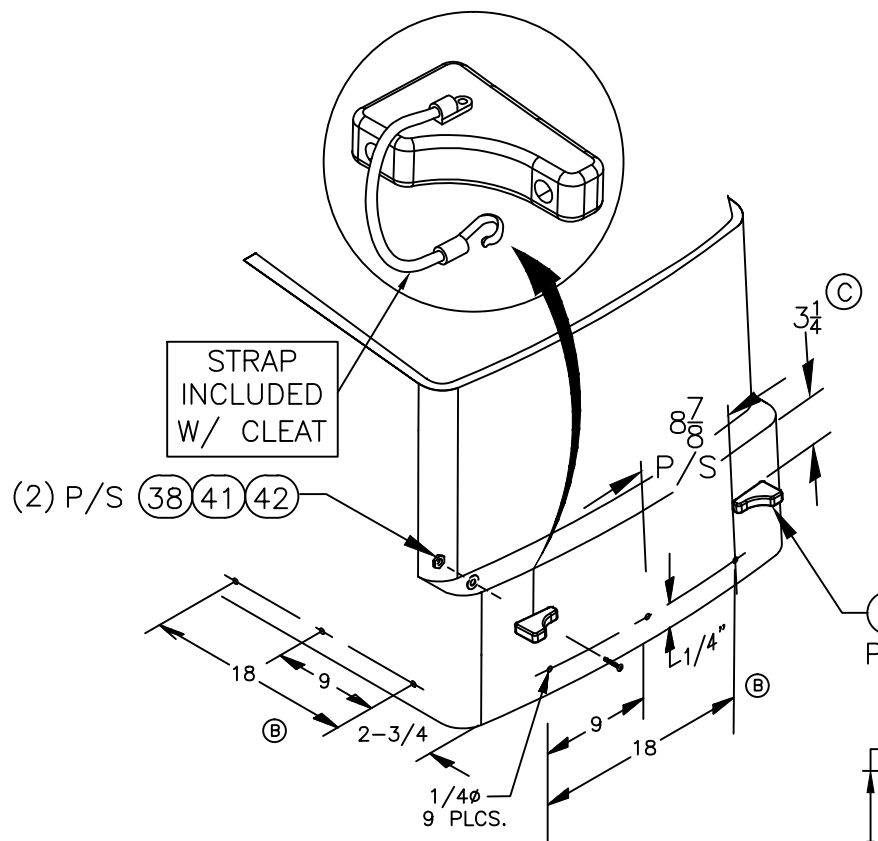
 PRODUCT DEV. & MFG. ENGINEERING GROUP	CHECKED: R.AVILA	DATE: 10/04/05	DRAWN: M.ZAFFUTO	DATE: 10/04/05	SCALE: NONE	BOAT MODEL	MOLD NO.
	APPD: K.RANIERI	DATE: 10/04/05	DWG. TITLE:			150MT	22J87100
	DESIGN: V.KNIGHT	DATE: 10/04/05	CONSOLE SUB-ASSY.			INIT. REL. ECN NO:	DWG. NO:
	INT. ENG: M.GATICA	DATE: 10/05/05				050577	09201
							1 OF 3

THIS DOCUMENT IS THE PROPERTY OF BOSTON WHALER, INC. MFG. DEPT., EDGEWATER, FLORIDA. ALL RIGHTS ARE RESERVED. THIS DOCUMENT AND INFORMATION CONTAINED MUST NOT BE COPIED OR DISCLOSED TO OTHERS WITHOUT WRITTEN PERMISSION OF BOSTON WHALER, INC.

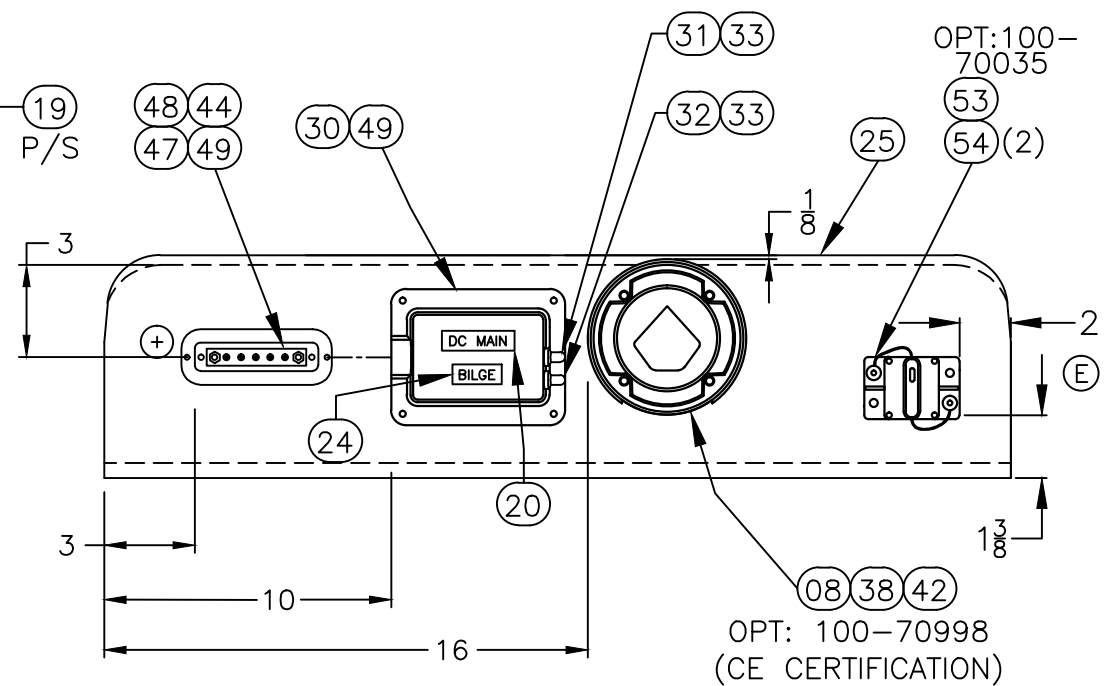
DWG. NO:
09201

REV.
K

CURRENT ECD
13029359



OPT: 100-70203
FISHING PACKAGE
OPT: 100-70307
COOLER SEAT



CONSOLE CLOSEOUT LAYOUT
(VIEW LOOKING AFT, FROM INSIDE CONSOLE)



INTERPRET DIMENSIONS AND TOLERANCES PER ANSI Y 14.5 UNLESS OTHERWISE SPECIFIED DIMENSIONS ARE IN INCHES.
TOLERANCES: ANGLES = ± .5° .XXX = ± .010
.X = ± .1 .XX = ± .03
X/X = ± 1/16
DO NOT SCALE DRAWING

DRAWN: M.ZAFFUTO DATE: 10/04/05 SCALE: NONE
DWG. TITLE:
CONSOLE SUB-ASSY.

BOAT MODEL 150MT	MOLD NO. 22J87100
INIT. REL. ECN NO: 050577	DWG. NO: 09201
SHT. NO. 2 OF 3	

THIS DOCUMENT IS THE PROPERTY OF BOSTON WHALER, INC. MFG. DEPT. EDgewater, FLORIDA. ALL RIGHTS ARE RESERVED. THIS DOCUMENT AND INFORMATION CONTAINED MUST NOT BE COPIED OR DISCLOSED TO OTHERS WITHOUT WRITTEN PERMISSION OF BOSTON WHALER, INC.

DWG. NO: 09201
 REV. K
 CURRENT ECO: 13029359

BILL OF MATERIAL				
ITEM	QTY.	U/M	DESCRIPTION	B.W.I. NO.
01	1	EA	FIBERGLASS PART, CONSOLE 160DA-99	22-J871-00
02	1	EA	DOOR, HDPE BW160DA/17MTK-06 CNSL	1803646
03	3	EA	SCREW, TAPPING #6 x 3/4" POH SC	1008564
04	1	EA	RAIL, GRAB BW170MT-02 CNSL SS	1689427
05	1	EA	W/S, BW170MT CNSL CLEAR	2082385
06	1	EA	BOX, PLAS BW-12 TACKLE 2-DRWR W/LATCH WHT	2088018
07	1	EA.	PANEL, BLANK:BW150MT-06 W/SWITCHES	1809846
08	1	EA	SWITCH, BATTERY ON/OFF W/O LOCK W/O DISC	0162701
09	1	EA	PANEL, BW150-09 SW 06-08 MODEL USED P/N 1809674	1963295
10	6	EA.	SCREW, MACHINE #10-24 X 3/4" PTH SC	1008705
11	1	EA	CUSH, BW17MTK-05 CNSL ROD HLDR	1781379
12	1	EA	PANEL, HDPE BW170MT-02 CLSOUT CNSL BASE	1690180
13	1	EA	CONTROL, CNSL MNT SGL N/HARNESS GEN II	2090266
14	1	EA	STEERING WHEEL, 15" DIA SS 25DEG	1020197
15	1	EA	ACC PART, MERC SW (SAFETY ASSY)	0882605
16	4	EA	SCREW, TAPPING # 10 X 1" PTH SC	1008739
17	3	EA	WASHER, LOCK/SPLIT 5/16" SC	1260611
18	1	EA	ROD HOLDER, BW170MT-02 4-ROD ASSY	1690318
19	1	PR.	CLEAT ASSY, HDPE BW-06 COOLER 36QT	1812411
20	1	EA	LABEL, BW DC MAIN BREAKER	1075282
21	1	EA	STEERING, HELM NFB SGL	0626143
22	1	EA	STEERING BEZEL 90 DEG SGL	0626150
23	1	EA	EMBLEM, BW STEERING WHEEL CAP	1021054
24	1	EA	LABEL, BILGE (LEXAN)	1745123
25	1	EA	PANEL, HDPE BW140/160DA-99 CLSOUT CNSL LRG	1193093
26	1	EA	SWITCH, IGN ASSY 3-POSITION N/HOUSING	1820272
27	2	EA	DRINKHOLDR, PLAS W/DRAIN DEEP XLG SZ BLK	1727419
28	0	FT	HOSE, PVC CLEAR 3/8"	0124347
29	1	EA	BOX, ABS FIRE EXT SHORT WHT	1037555
30	1	EA	BOX, ABS HARNESS	1037530
31	1	EA	BRKR/SWITCH, PUSH BUTTON 30A ETA	0365775
32	1	EA	BRKR, MANUAL RESET 5A	0670497
33	2	EA	BOOT, RESET BRKR CLEAR	1066547
34	4	FT	TRIM, EDGE WHITE FLEX 'L'-TRIM	1020924
35	7	EA	NUT, WELL	1033422
36	7	EA	SCREW, MACHINE #10-32 x 1-1/4" PFH SC	1010107
37	7	EA	WASHER, FINISH #10 SS	0896258
38	8	EA	SCREW, MACHINE #10-24 X 1.25" POH SC	1008424
39	4	EA	SNAP STUD, W/#8 X 3/8" PH BR/NI/SS	0203786
40	3	EA	SCREW, CAP #5/16-18 X 1.25" HEX HD SC	1742748
41	26	EA	WASHER, FLAT #10 SC	1260751
42	30	EA	NUT, HEX NYLON LOCK #10-24 SC	1007772
43	1	EA	CAP, DRAINBOOT STERN LIGHT MAST BLK	1042761
44	14	EA	SCREW, TAPPING #8 x 5/8" PTH SC	1010925
45	1	EA.	LIGHT, NAV STERN BASE RND CHR.	0331751
46	12	EA	SCREW, MACHINE #10-24 x 1.25" POH SC	1008424
47	1	EA	COVER, ABS BW MINIBUSS BLK	1185016
48	1	EA	BUSS BAR, MINIBUS BAR DC	1324334
49	6	EA	SCREW, TAPPING #8 x 1/2" PTH SC	1008812
50	6	EA	SCREW, TAPPING #8 x 3/4" PFH SC	1008408
51	1	EA	LIGHT, NAV A/R STERN 54" N/BEND	1691343
52	0	FT	TUBING, VINYL SPEEDO BLK	1043017
53	1	EA	BRKR, SURF MNT THERMAL 40AMP SWITCHABLE	1475433
54	2	EA	SCREW, TAPPING #10A X 3/4" PTH SC	1008762

(H)
(I)
(G)
(A)
(J)
(C)
(K)
(F)
(E)
(E)

SHT. NO. 3 of 3

MOLD NO. 22J87100

BOAT MODEL 150MT

INIT. REL. ECN NO: 050577

SCALE: NONE

DATE: 10/04/05

DRAWN: M. ZAFFUTO

DWG. TITLE: CONSOLE SUB-ASSY.

INTERPRET DIMENSIONS AND TOLERANCES PER ANSI Y 14.5 UNLESS OTHERWISE SPECIFIED DIMENSIONS ARE IN INCHES.

TOLERANCES: ANGLES = ± .5° .XXX = ± .010
 .X = ± .1 X = ± 1/16
 .XX = ± .03

DO NOT SCALE DRAWING



BOSTON WHALER
 PRODUCT DEV. & MFG. ENGINEERING GROUP

THIS DOCUMENT IS THE PROPERTY OF BOSTON WHALER, INC. MFG. DEPT., EDGEWATER, FLORIDA. ALL RIGHTS ARE RESERVED. THIS DOCUMENT AND INFORMATION CONTAINED MUST NOT BE COPIED OR DISCLOSED TO OTHERS WITHOUT WRITTEN PERMISSION OF BOSTON WHALER, INC.

DWG. NO:
10501

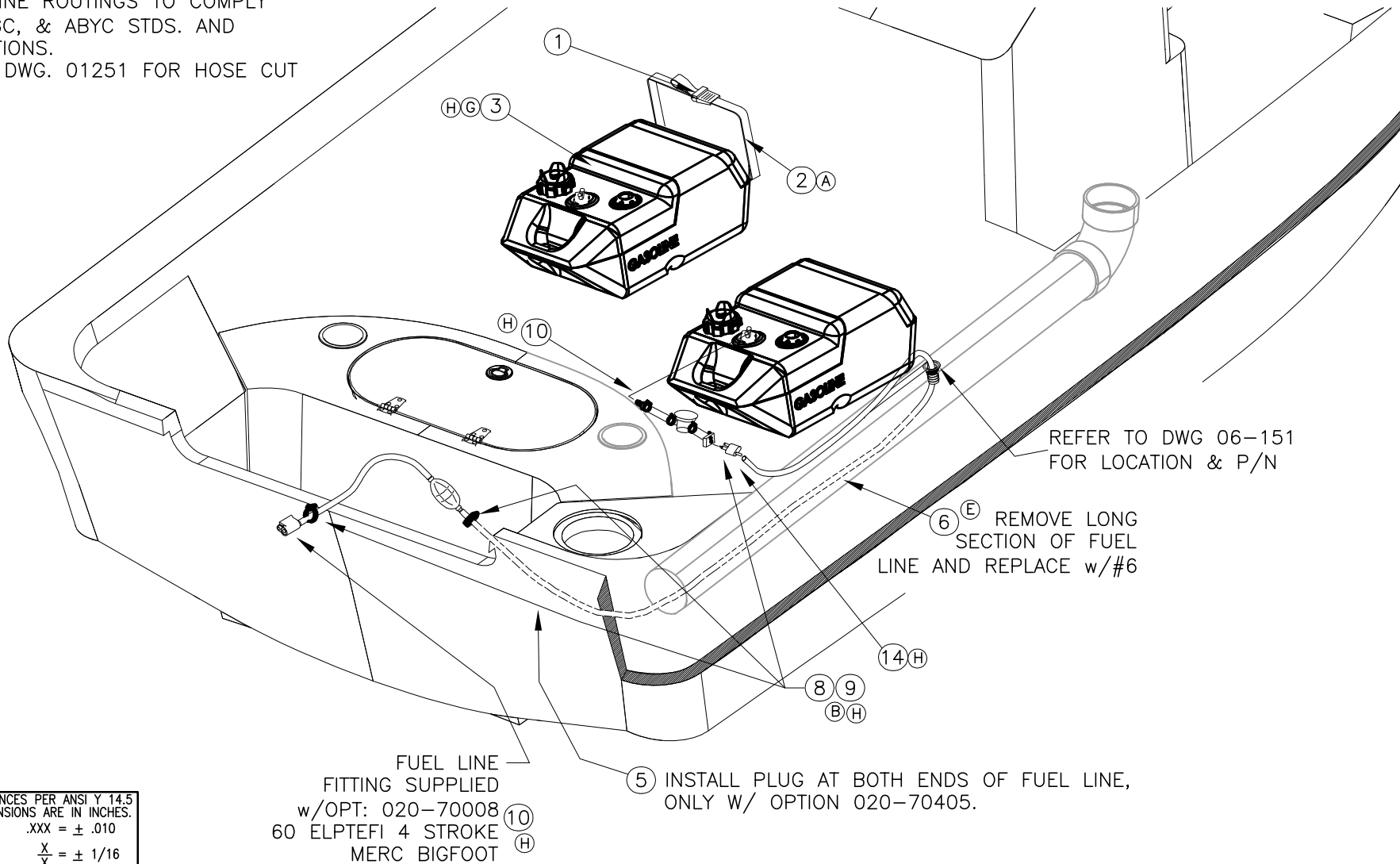
REV.
H

CURRENT ECD
11047700

REVISIONS					
REV.	DESCR.	BY	DATE	APPVD.	ECN NO.
G	ADDED ITEMS 11, 12 & 13. DELETED ITEMS 4 & 7 #2 WAS QTY. 7.2. ITEM #3 WAS 1121706	SLJ	04/27/10	ST	10036682
H	REPLACE 1948330 W/ 2061146 & 1949648 W/ 2069889 & 1423813 W/ 2062871. ADD 201456.	JSD	10/11/11	JK	11047700

NOTES:

1. REFER TO DWG. 16501 FOR HOLE CUTOUTS.
2. HOSE & LINE ROUTINGS TO COMPLY w/NMMA, USGC, & ABYC STDS. AND RECOMMENDATIONS.
3. REFER TO DWG. 01251 FOR HOSE CUT LENGTHS.



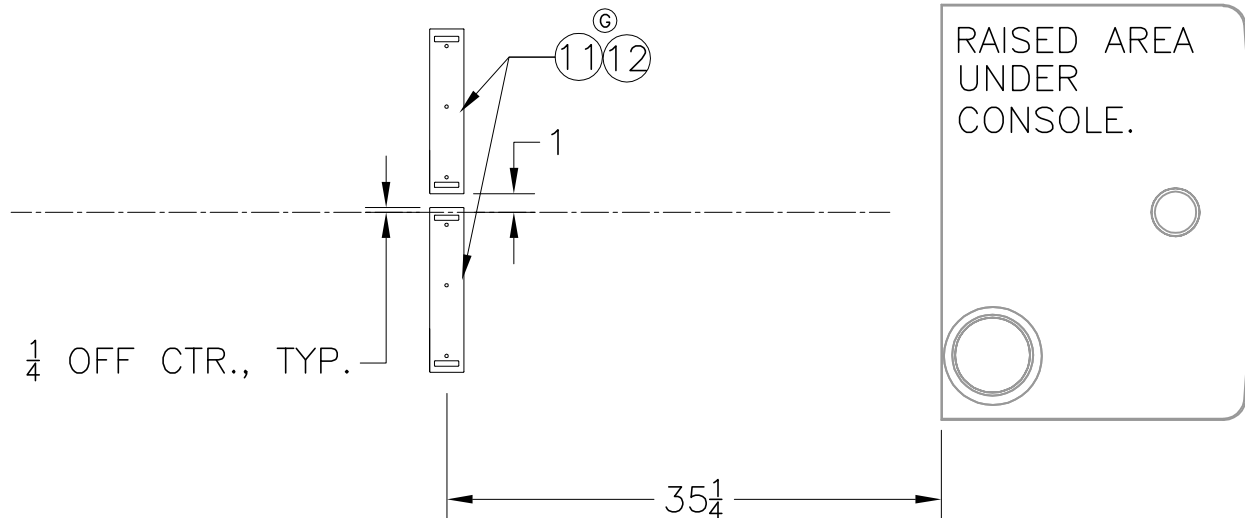
INTERPRET DIMENSIONS AND TOLERANCES PER ANSI Y 14.5 UNLESS OTHERWISE SPECIFIED DIMENSIONS ARE IN INCHES.
TOLERANCES: ANGLES = ± .5° .XXX = ± .010
.X = ± .1 .XX = ± .03 X = ± 1/16
DO NOT SCALE DRAWING



CHECKED: RA	DATE: 9/09/05	DRAWN: J.HALPIN	DATE: 9-02-05	SCALE: NONE	BOAT MODEL	MOLD NO.
APPD: KR	DATE: 9/09/05	DWG. TITLE:			150MT	
DESIGN: VPK	DATE: 9/09/05	FUEL SYSTEM INSTALLATION			INIT. REL. ECN NO:	DWG. NO:
INT. ENG: MG	DATE: 9/09/05				050577	10501
					SHT. NO.	
					1	OF 2

PARTS LIST					
ITEM	QTY	U/M	DESCRIPTION	B.W.I. NO.	
	1	2	EA.	UPH PARTS, BUCKLE 1" SIDE RELEASE M/F BLK	0871004
Ⓐ	2	8.0	FT.	WEBBING, BW-97 STRAP NYLON 1"	1030105
ⒽⒸ	3	2	EA.	TANK, FUEL 6.5GAL PLAS W/GAUGE EPA	2061146
Ⓒ	4	4	EA.	BRACKET, BW-97 BATT HOLDDOWN 1.25"CHR/PLT	1042837
	5	2	EA.	PLUG, SLEEVE CAP 3/4"OD X 3/8"ID	1043082
ⒽⒺⒸ	6	0	FT.	HOSE, FUEL 3/8" TYPE A CLASS 1-15 ISO/CE/CARB	1884011
Ⓒ	7	8	EA.	SCREW, TAPPING #10A X 1" POH SC	1008507
Ⓑ	8	3	EA.	CLAMP, HOSE #06M 5/16"-7/8" SS MINI	0123398
Ⓑ	9	3	EA.	COVER, CLAMP END PROT 1/2"L X.035"X.30"RED	0830976
ⒽⒻⒹ	10	1	EA.	FITTING, FUEL QD PTBL 3 CONN	2062871
ⒽⒸ	11	2	EA.	CLEAT, HDPE FUEL TANK (MOELLER 6.5) EPA	2069889
Ⓒ	12	6	EA.	SCREW, TAPPING #10A X 1.5" PTH SC	1008747
ⒽⒸ	13	2	EA.	FITTING, FUEL QUICK DISCONNECT PTBL TANK	1948331
Ⓗ	14	1	EA.	ACC PART, FUEL HOSE ASSY W/O" FDV W/ 3 PRONG QD	2061456

06-08 MODELS USED MERCURY TOP HANDLE TANKS



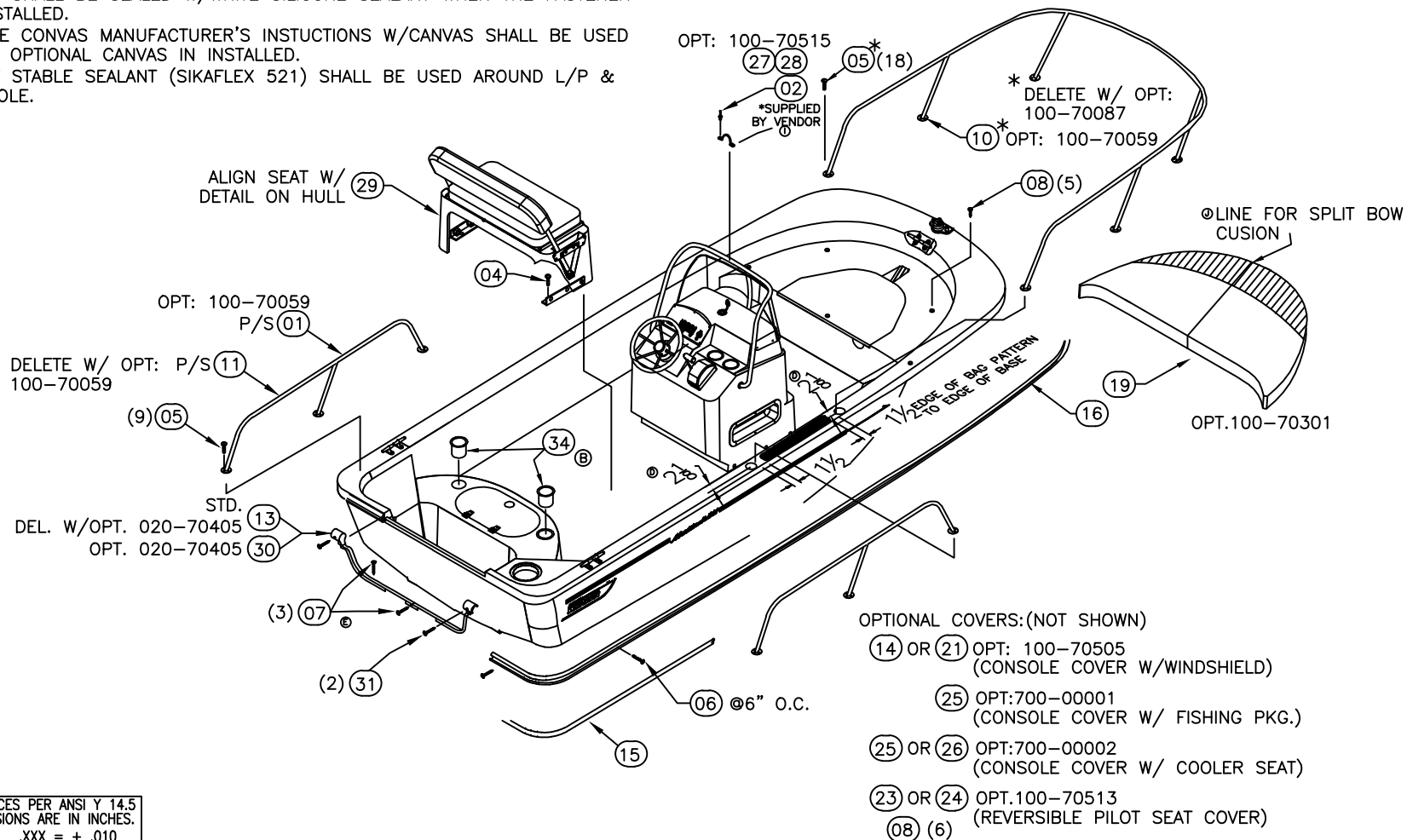
THIS DOCUMENT IS THE PROPERTY OF BOSTON WHALER, INC. MFG. DEPT., EDGEWATER, FLORIDA. ALL RIGHTS ARE RESERVED. THIS DOCUMENT AND INFORMATION CONTAINED MUST NOT BE COPIED OR DISCLOSED TO OTHERS WITHOUT WRITTEN PERMISSION OF BOSTON WHALER, INC.

DWG. NO: 11201
 REV. J
 CURRENT ECD 12078769

REVISIONS					
REV.	DESCR.	BY	DATE	APPVD.	ECN NO.
H	CHANGED PT 1890651,1809652 TO 1963773, 1963774	TJ	2/2/09	AF	08125673
I	REMOVED ITEM #09 ON SHT 1 AND 3	SG	04/06/10	ST	10046711
J	REPLACED BOW CUSION WITH SPLIT BOW CUSION	TP	08/29/12	JK	12078769

NOTES:

1. REF. DWG. 07401 FOR CONSOLE TO HULL INTERCONNECTS.
2. ALL DRILLED HOLES (FOR MOUNTING COMPONENTS & HARDWARE TO HULL) SHALL BE SEALED W/WHITE SILICONE SEALANT WHEN THE FASTENER IS INSTALLED.
3. THE CANVAS MANUFACTURER'S INSTRUCTIONS W/CANVAS SHALL BE USED WHEN OPTIONAL CANVAS IS INSTALLED.
- ④ 4. UV STABLE SEALANT (SIKAFLEX 521) SHALL BE USED AROUND L/P & CONSOLE.



INTERPRET DIMENSIONS AND TOLERANCES PER ANSI Y 14.5 UNLESS OTHERWISE SPECIFIED DIMENSIONS ARE IN INCHES.
 TOLERANCES: ANGLES = ± .5° .XXX = ± .010
 .X = ± .1 X = ± 1/16
 .XX = ± .03 X = ± 1/16
 DO NOT SCALE DRAWING



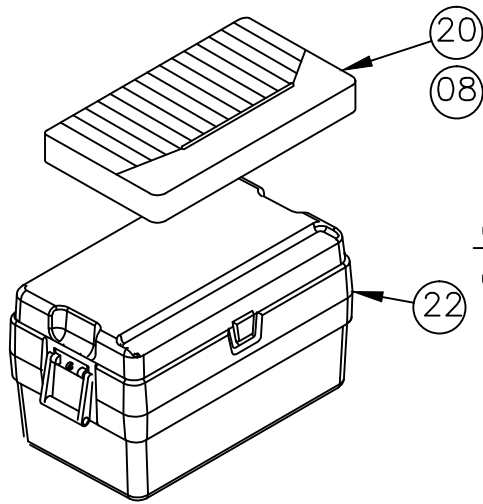
CHECKED: R.AVILA	DATE: 9/16/05	DRAWN: M.ZAFFUTO	DATE: 08/31/05	SCALE: NONE	BOAT MODEL	MOLD NO.
APPD: K.RANIERI	DATE: 9/16/05	DWG. TITLE:		150MT		
DESIGN: V.KNIGHT	DATE: 9/16/05	FINAL ASSEMBLY		INIT. REL. ECN NO:	DWG. NO:	SHT. NO.
INT. ENG: M.GATICA	DATE: 9/16/05			050577	11201	1 of 3

THIS DOCUMENT IS THE PROPERTY OF BOSTON WHALER, INC. MFG. DEPT., EDGEWATER, FLORIDA. ALL RIGHTS ARE RESERVED. THIS DOCUMENT AND INFORMATION CONTAINED MUST NOT BE COPIED OR DISCLOSED TO OTHERS WITHOUT WRITTEN PERMISSION OF BOSTON WHALER, INC.

DWG. NO:
11201

REV.
J

CURRENT ECD
12078769

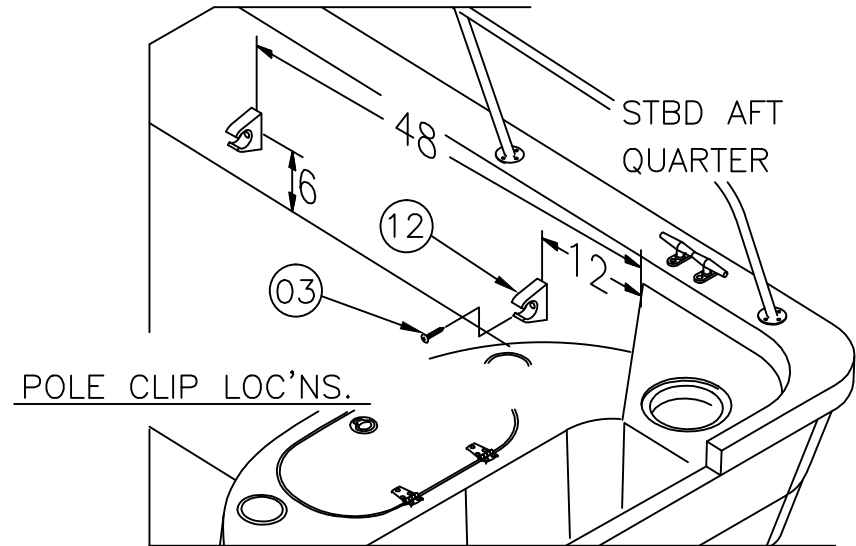


(20)
(08)(11) (A)

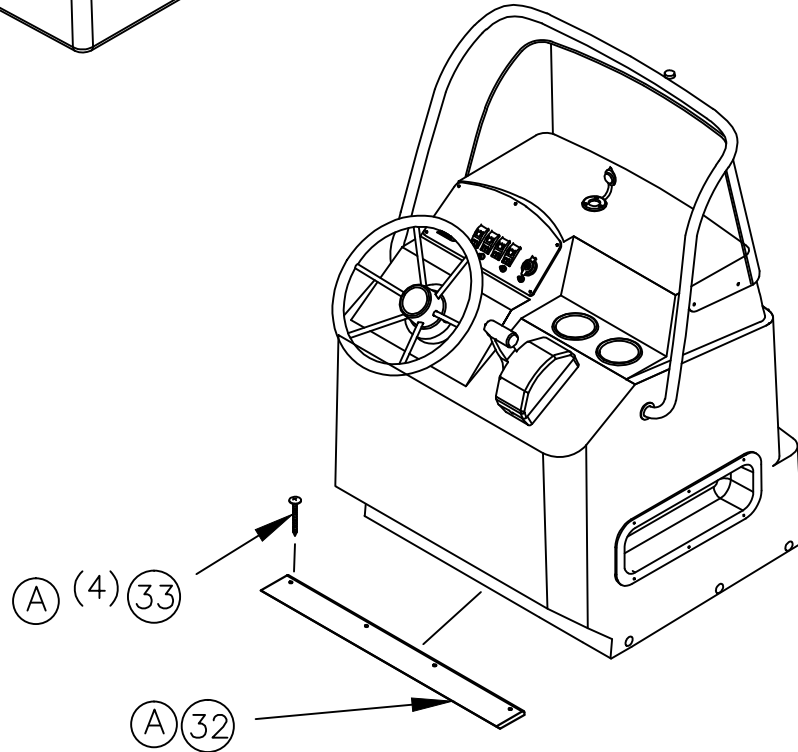
SEE DWG. 09201
FOR CLEAT LOC'N

COOLER & CUSHION

OPTIONS: 100-70203
FISH PKG.
& 100-70307
COOLER SEAT

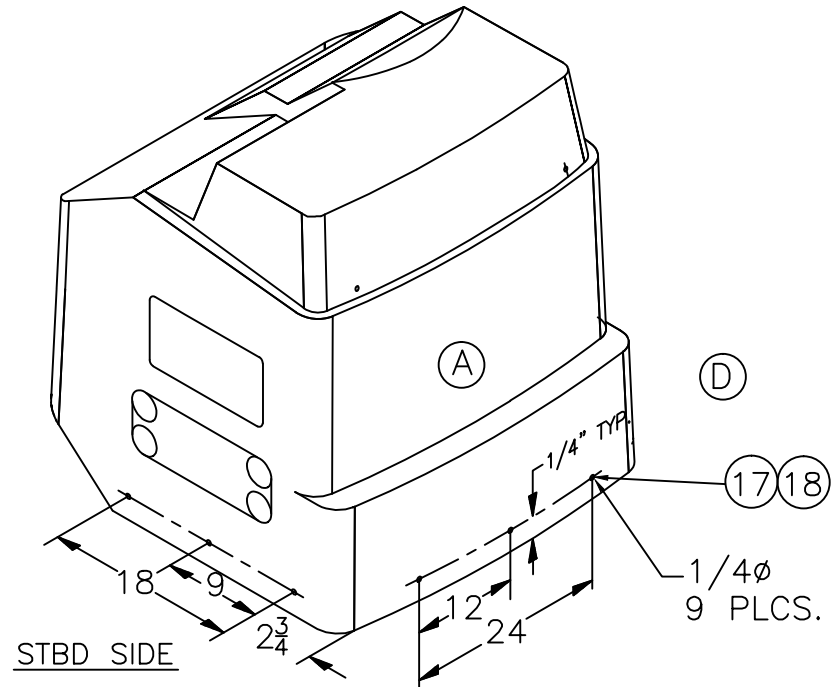


POLE CLIP LOC'NS.



(A) (4) (33)

(A) (32)



STBD SIDE



INTERPRET DIMENSIONS AND TOLERANCES PER ANSI Y 14.5 UNLESS OTHERWISE SPECIFIED DIMENSIONS ARE IN INCHES.
TOLERANCES: ANGLES = ± .5° .XXX = ± .010
.X = ± .1 .X = ± 1/16
.XX = ± .03 X

DO NOT SCALE DRAWING

DRAWN: M.ZAFFUTO DATE: 08/31/05 SCALE: NONE
DWG. TITLE:
FINAL ASSEMBLY

BOAT MODEL
150MT
INIT. REL. ECD NO:
050577

MOLD NO.
DWG. NO:
11201

SHT. NO.
2 OF 3

PARTS LIST

ITEM	QTY.	U/M	DESCRIPTION	B.W.I. NO.
1	2	EA.	RAIL, SIDE BW150MT-06 SS HI-PATT	1811610
2	2	EA.	RIVET, POP/BLIND #3/16 X 3/8" SS	0192120
3	2	EA.	SCREW, TAPPING #10A X 1" PTH SC	1008739
Ⓒ	4	9	EA. SCREW, TAPPING #14A X 1.5" PPH SC	1008697
5	36	EA.	SCREW, MACHINE #1/4-20 X 1" PPH SC	1008580
6	60	EA.	SCREW, TAP #10A X 1.5" W/STP EPXY ORNG PFH SC	1814515
Ⓔ	7	3	EA. SCREW, TAPPING #8A X 1" PTH SC	1008804
Ⓐ	8	21	EA. SNAP STUD, W/#8 X 3/8" PH BR/NI/SS	203786
Ⓘ	9	1	EA. EYE, STRAP EYE TIE DOWN 5/16" CHR/ZINC	861120
10	1	EA.	RAIL, BOW BW150MT-06 SS	1807955
11	2	EA.	RAIL, SIDE BW150MT-06 SS	1807953
12	1	PR.	CLIP, POLE STRG BLK - MAST LIGHT	0590646
13	1	EA.	CAP, RUBRAIL BW150SP-03 TRNSM TRIM W/ NOTCH	1743356
Ⓕ	14	1	EA. CANVAS, BW17MTK/150MT-05 CNSL CVR BLK	1771130
15	1	EA.	INSERT, RUB RAIL CHAR FLEX 40'	1020817
16	1	EA.	RUBRAIL, PLASTIC CHAR 40'	1020858
ⒸⒹ	17	9	EA. SCREW, TAPPING #14A X 1.5" PFH SC	1008382
18	9	EA.	WASHER, FINISH #12 SS	0958868
Ⓙ	19	1	EA. CUSH, BW150MT-13 SPLIT BOW	2095913
20	1	EA.	CUSH, BW150MT-06 COOLER SEAT 36QT	1808122
Ⓕ	21	1	EA. CANVAS, BW17MTK/150MT-05 CNSL CVR BLU	1771131
22	1	EA.	COOLER, 36QT	0814012
23	1	EA.	CANVAS, BW170MT-05 REV'BL SEAT CVR BLK	1771128
24	1	EA.	CANVAS, BW170MT-05 REV'BL SEAT CVR BLUE	1771129
25	1	EA.	CANVAS, BW17MTK-05 CNSL CVR W/COOLRCUTOUT BLK	1776599
26	1	EA.	CANVAS, BW17MTK-05 CNSL CVR W/COOLRCUTOUT BLUE	1776601
Ⓗ	27	1	EA. CANVAS, BW150MT-09 BIM TOP W/RNG BLK	1963773
Ⓗ	28	1	EA. CANVAS, BW150MT-09 BIM TOP W/MNT BLUE	1963774
29	1	EA.	REV. PILOT SEAT SUB-ASSY.	09251
30	1	EA.	CAP, RUBRAIL BW150SP-02 TRNSM TRIM	1691318
31	2	EA.	SCREW, TAPPING #10A X 1.5" PTH SC	1008747
Ⓐ	32	1	EA. PANEL, HDPE BW150MT-06 CLSOUT CNSL BASE	1816852
Ⓐ	33	4	EA. SCREW, TAPPING #10A X 1" PPH SC	1213131
ⒸⒷ	34	2	EA. DRINKHOLDR, PLAS W/DRAIN DEEP XLG SZ BLK	1727419



INTERPRET DIMENSIONS AND TOLERANCES PER ANSI Y 14.5
UNLESS OTHERWISE SPECIFIED DIMENSIONS ARE IN INCHES.
TOLERANCES: ANGLES = ± .5° .XXX = ± .010
 .X = ± .1 X = ± 1/16
 .XX = ± .03 X = ± 1/16
DO NOT SCALE DRAWING

DRAWN: M.ZAFFUTO DATE:08/31/05 SCALE: NONE
DWG. TITLE:
FINAL ASSEMBLY

BOAT MODEL 150MT	MOLD NO.
INIT. REL. ECD NO: 050577	DWG. NO: 11201
SHT. NO. 3 OF 3	

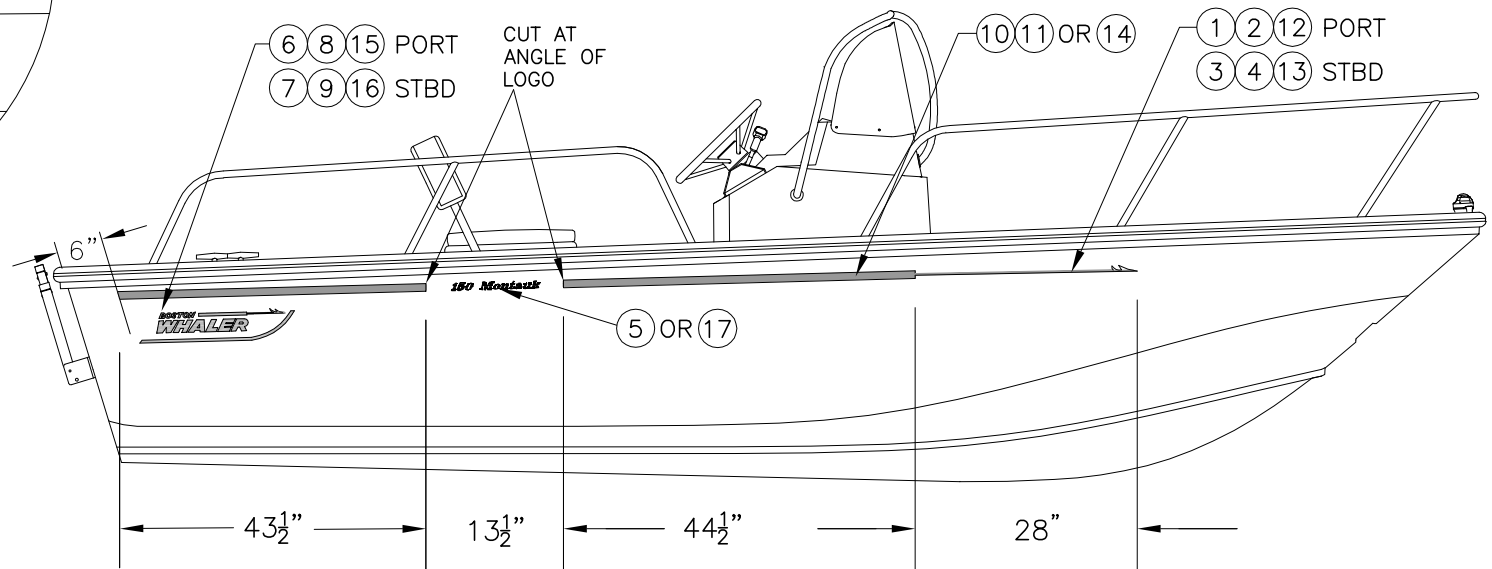
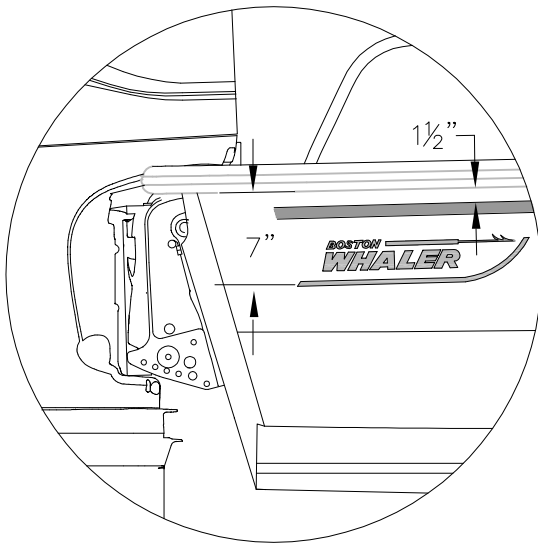
THIS DOCUMENT IS THE PROPERTY OF BOSTON WHALER, INC. MFG. DEPT., EDGEWATER, FLORIDA. ALL RIGHTS ARE RESERVED. THIS DOCUMENT AND INFORMATION CONTAINED MUST NOT BE COPIED OR DISCLOSED TO OTHERS WITHOUT WRITTEN PERMISSION OF BOSTON WHALER, INC.

DWG. NO: 12401
 REV. A
 CURRENT ECD 10066926

REVISIONS					
REV.	DESCR.	BY	DATE	APPVD.	ECN NO.
A	MYE'11: ADDED OPT ITEM #'S 12-17	SBL	06/08/10	ST	10066926

PARTS LIST

ITEM	QTY.	OPT.	U/M	DESCRIPTION	B.W.I. NO.
1		1	EA.	DECAL, BW-04 HARPOON PRT DK BLUE	1752933
2	1		EA.	DECAL, BW-04 HARPOON PRT WHLR RED	1752931
3		1	EA.	DECAL, BW-04 HARPOON STB DK BLUE	1752936
4	1		EA.	DECAL, BW-04 HARPOON STB WHLR RED	1752932
5	2		EA.	DECAL, BW-06 150MT GRY (DRIP MOLD)	1807952
6		1	EA.	DECAL, BW-04 LOGO 20" DK BLUE PRT (DRIP MOLD)	1752939
7		1	EA.	DECAL, BW-04 LOGO 20" DK BLUE STB (DRIP MOLD)	1752940
8	1		EA.	DECAL, BW-04 LOGO 20" RED PRT (DRIP MOLD)	1752937
9	1		EA.	DECAL, BW-04 LOGO 20" RED STB (DRIP MOLD)	1752938
10		16	FT.	TAPE, SOLID 1" DK BLUE W/GRY PIN STRIP	1754510
11	16		FT.	TAPE, SOLID 1" RED W/GRY PIN STRIP	1754509
Ⓐ 12		1	EA.	DECAL, HARPOON PRT WHLR BLK	2026274
Ⓐ 13		1	EA.	DECAL, HARPOON STB WHLR BLK	2026275
Ⓐ 14		16	FT.	TAPE, SOLID 1" BLK W/GRY PIN STRIP	2026289
Ⓐ 15		1	EA.	DECAL, BW-09 LOGO 20" BLK PRT (DRIP MOLD)	1948643
Ⓐ 16		1	EA.	DECAL, BW-09 LOGO 20" BLK STBD (DRIP MOLD)	1948644
Ⓐ 17		2	EA.	DECAL, 150MT BLK DRIP MOLD	2026284



INTERPRET DIMENSIONS AND TOLERANCES PER ANSI Y 14.5 UNLESS OTHERWISE SPECIFIED DIMENSIONS ARE IN INCHES.
 TOLERANCES: ANGLES = ± .5° .XXX = ± .010
 .X = ± .1 X = ± 1/16
 .XX = ± .03 X = ± 1/16
 DO NOT SCALE DRAWING



CHECKED: AD	DATE: 10/06/05	DRAWN: HAL READ	DATE: 10/05/05	SCALE: NONE	BOAT MODEL	MOLD NO.
APPD: RA	DATE: 10/06/05	DWG. TITLE:		150MT		
DESIGN: VPK	DATE: 10/06/05	GRAPHICS LOCATIONS			INIT. REL. ECN NO:	DWG. NO:
INT. ENG: MG	DATE: 10/06/05			050577	12401	SHT. NO.
						1 OF 1

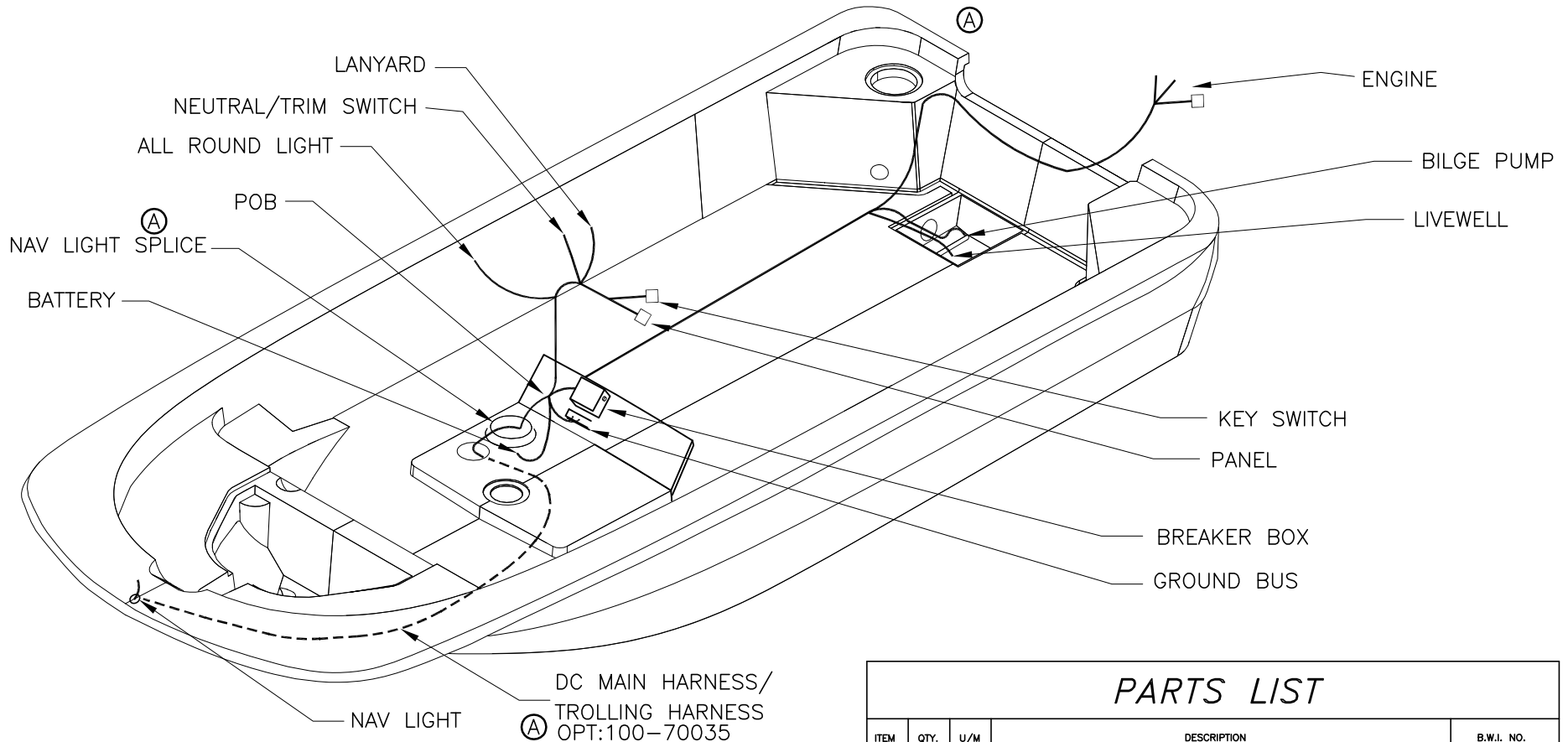
THIS DOCUMENT IS THE PROPERTY OF BOSTON WHALER, INC. MFG. DEPT., EDGEWATER, FLORIDA. ALL RIGHTS ARE RESERVED. THIS DOCUMENT AND INFORMATION CONTAINED MUST NOT BE COPIED OR DISCLOSED TO OTHERS WITHOUT WRITTEN PERMISSION OF BOSTON WHALER, INC.

DWG. NO: 07801	REV. C	CURRENT ECD 09035867
--------------------------	------------------	--------------------------------

NOTES:

1. SECURE HARNESS W/ITEMS TIE CABLES, TIE BLOCKS, & SCREWS ON 14" MAX CENTERS. INSTALLATION SHALL BEGIN AT "POB".
2. REF. DWG 07401 FOR WIRING DIAGRAM.
3. ALL TERMINAL CONNECTIONS SHALL BE CORROSION SEALED USING T-9 SPRAY.
4. SEE DWG. 1893327 FOR HARNESS DIAGRAM.
5. ROUTE HARNESS THRU TUBE WITH STEERING & SHIFT THROTTLE CABLES.
6. ALL CONNECTIONS ARE TO BE MADE AS HIGH AS POSSIBLE ABOVE NORMAL ACCUMULATION OF BILGE WATER.
7. SEE DWG. 01-300 FOR TIE CABLES & TIE BLOCKS P/N & STANDARDS.

REVISIONS					
REV.	DESCR.	BY	DATE	APPVD.	ECN NO.
A	DELETE NAV. LIGHT WIRE FROM RUB RAIL. ADD 04&05, WIRE RUN AT BOW.	SWH	5/17/07	RA	07034092
B	REMOVE ITEMS 1,2,&3 AND ADD NOTES TO REFER DWG#01-300	JF	06/11/08	AF	08065289
C	NOTE 4: P/N 1893327 WAS 1893927.	SBL	04/28/09	BL	09035867



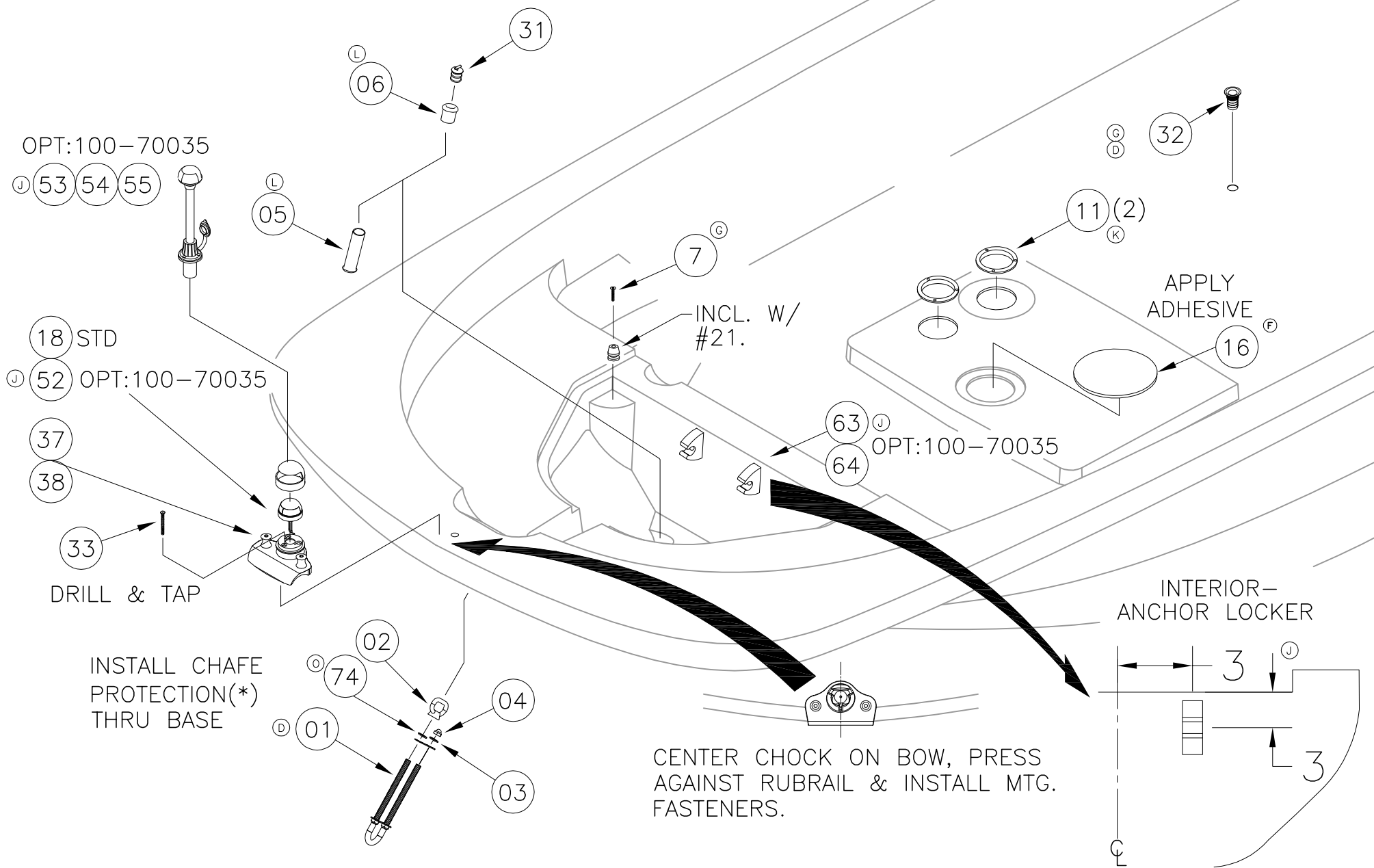
PARTS LIST

ITEM	QTY.	U/M	DESCRIPTION	B.W.I. NO.
ⓑ 01	8	EA.	TIE, CLIP BLK	1031764
ⓑ 02	18	EA.	TIE, CABLE 6" LG NYLON BLK	999672
ⓑ 03	8	EA.	SCREW, TAPPING #8A x 5/8" PTH	1010925

INTERPRET DIMENSIONS AND TOLERANCES PER ANSI Y 14.5 UNLESS OTHERWISE SPECIFIED DIMENSIONS ARE IN INCHES.
 TOLERANCES: ANGLES = ± .5° .XXX = ± .010
 .X = ± .1 .XX = ± .03
 .XX = ± .03 X/X = ± 1/16
 DO NOT SCALE DRAWING



CHECKED: D.HOY	DATE: 10/18/05	DRAWN: J.HALPIN	DATE: 10/18/05	SCALE: NONE	BOAT MODEL: 150MT	MOLD NO.	
APPD: KR	DATE: 10/18/05	DWG. TITLE: HARNESS INSTALLATION			INIT. REL. ECN NO: 050577	DWG. NO: 07801	SHT. NO. 1 of 1
DESIGN: V.KNIGHT	DATE: 10/18/05						
INT. ENG: MG	DATE: 10/18/05						

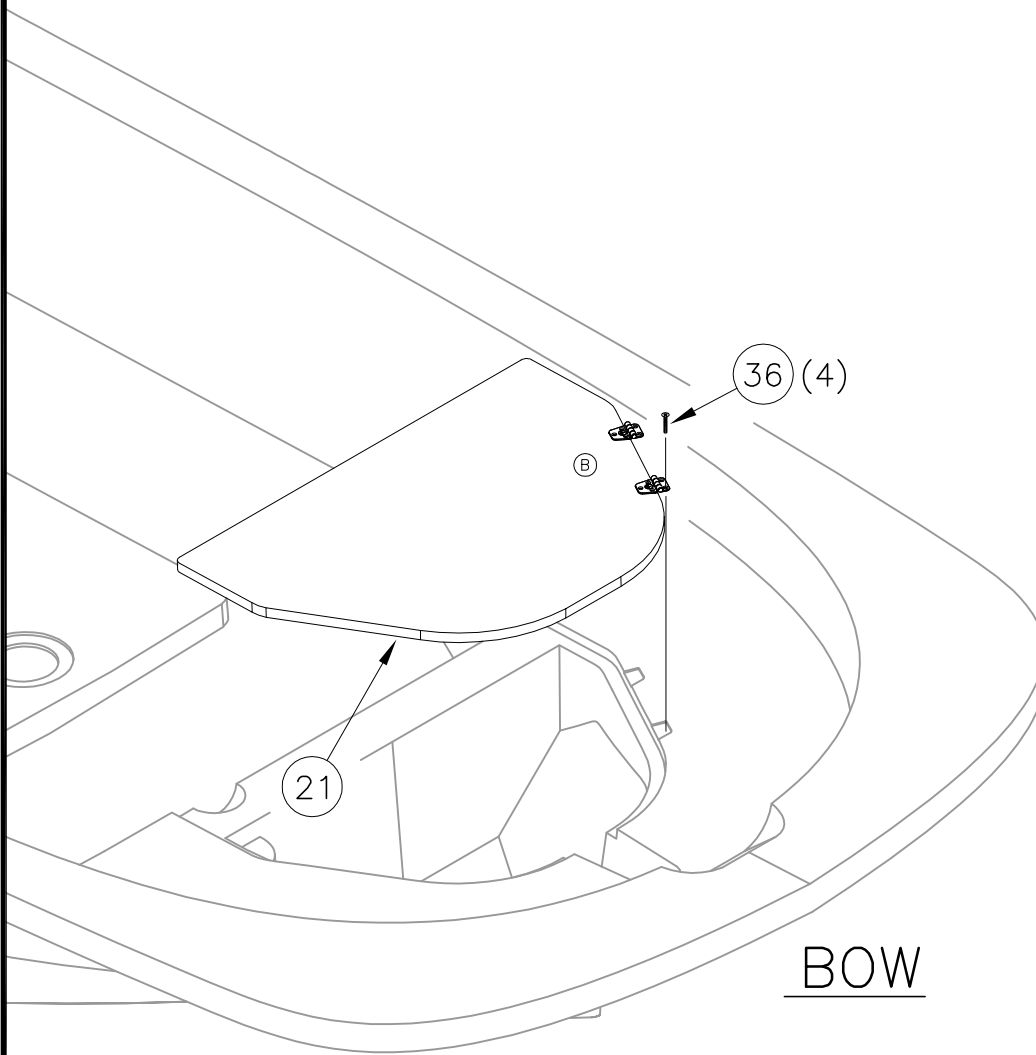


THIS DOCUMENT IS THE PROPERTY OF BOSTON WHALER, INC. MFG. DEPT., EDGEWATER, FLORIDA. ALL RIGHTS ARE RESERVED. THIS DOCUMENT AND INFORMATION CONTAINED MUST NOT BE COPIED OR DISCLOSED TO OTHERS WITHOUT WRITTEN PERMISSION OF BOSTON WHALER, INC.

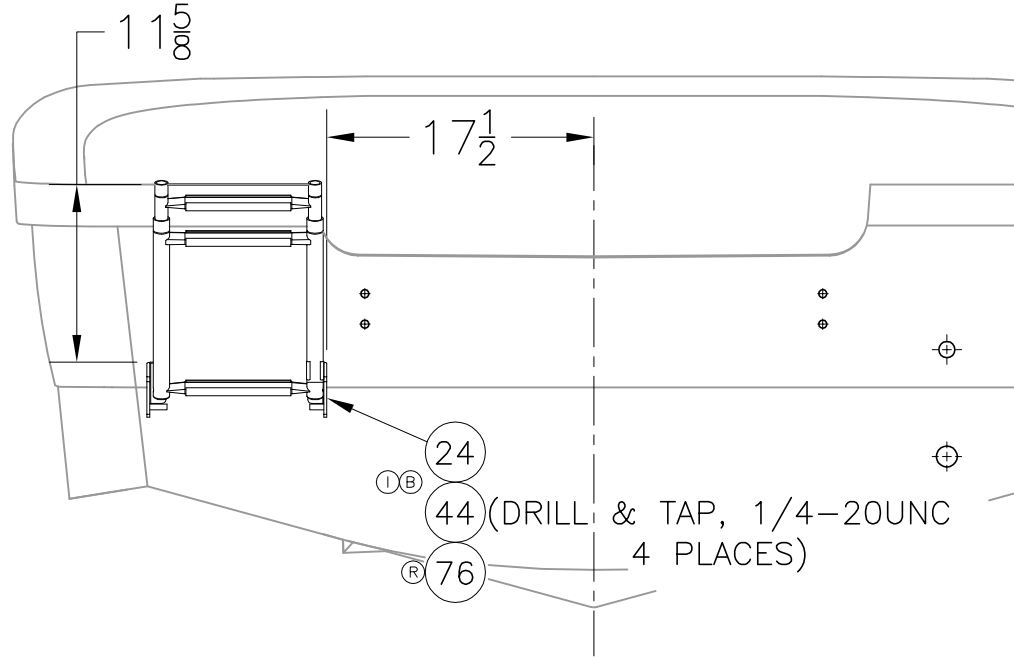
DWG. NO:
06151

REV.
S

CURRENT ECD
09116391



BOW

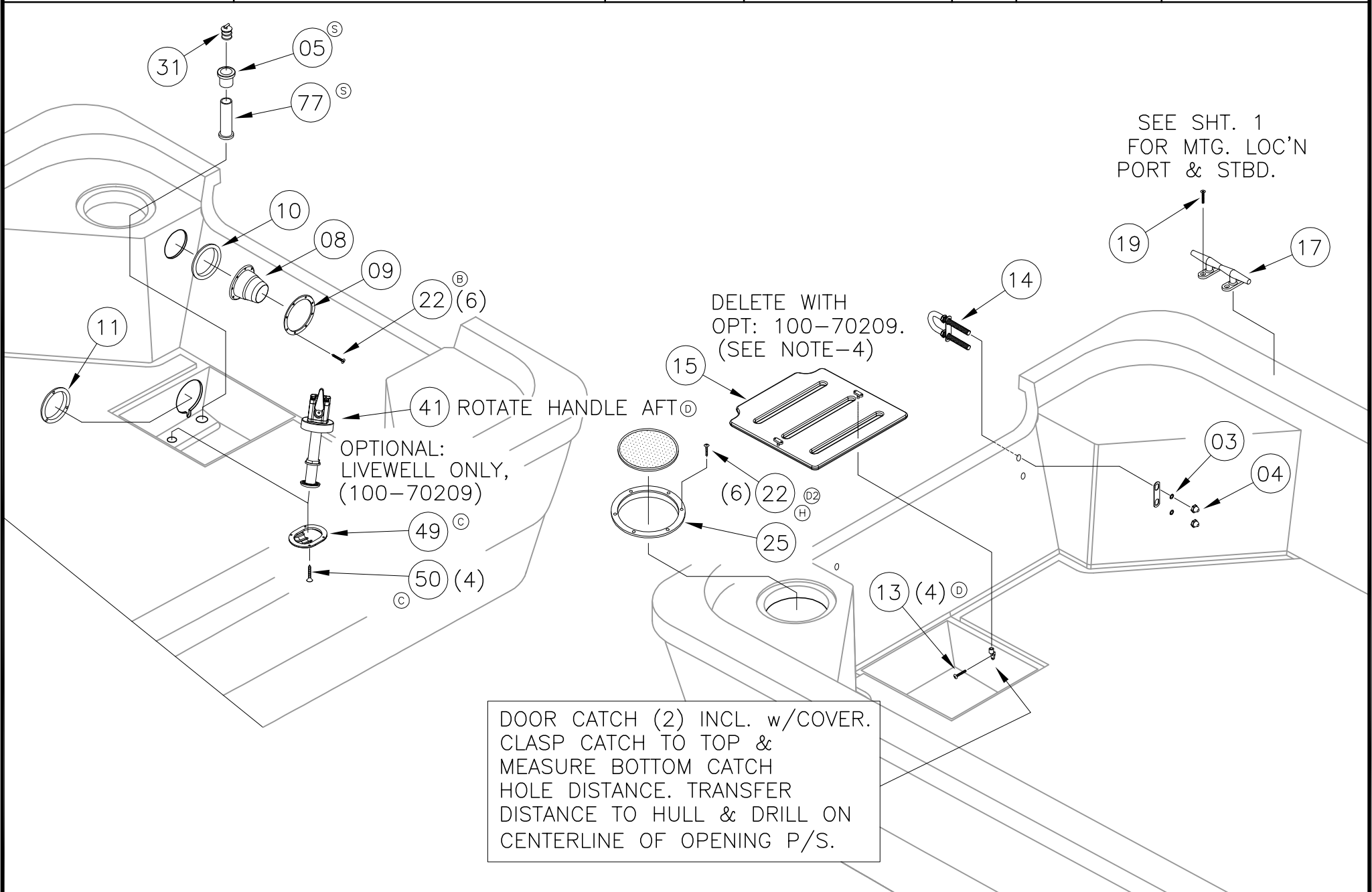


150MT TRANSOM VIEW



INTERPRET DIMENSIONS AND TOLERANCES PER ANSI Y 14.5 UNLESS OTHERWISE SPECIFIED DIMENSIONS ARE IN INCHES.
 TOLERANCES: ANGLES = ± .5° .XXX = ± .010
 .X = ± .1 X = ± 1/16
 .XX = ± .03
 DO NOT SCALE DRAWING

DRAWN: R.DURHAM	DATE: 09/12/05	SCALE: NONE	BOAT MODEL 150MT	MOLD NO.
DWG. TITLE: HULL OUTFIT & EQUIPMENT LOCATIONS			INIT. REL. ECN NO: 050577	DWG. NO: 06151
				SHT. NO. 3 OF 7



DOOR CATCH (2) INCL. w/COVER.
CLASP CATCH TO TOP &
MEASURE BOTTOM CATCH
HOLE DISTANCE. TRANSFER
DISTANCE TO HULL & DRILL ON
CENTERLINE OF OPENING P/S.



INTERPRET DIMENSIONS AND TOLERANCES PER ANSI Y 14.5 UNLESS OTHERWISE SPECIFIED DIMENSIONS ARE IN INCHES.
TOLERANCES: ANGLES = ± .5° .XXX = ± .010
.X = ± .1 X = ± 1/16
.XX = ± .03 X = ± 1/16
DO NOT SCALE DRAWING

DRAWN: R.DURHAM DATE: 09/12/05 SCALE: NONE
DWG. TITLE: HULL OUTFIT & EQUIPMENT LOCATIONS

BOAT MODEL 150MT
INIT. REL. ECN NO: 050577

MOLD NO.
DWG. NO: 06151

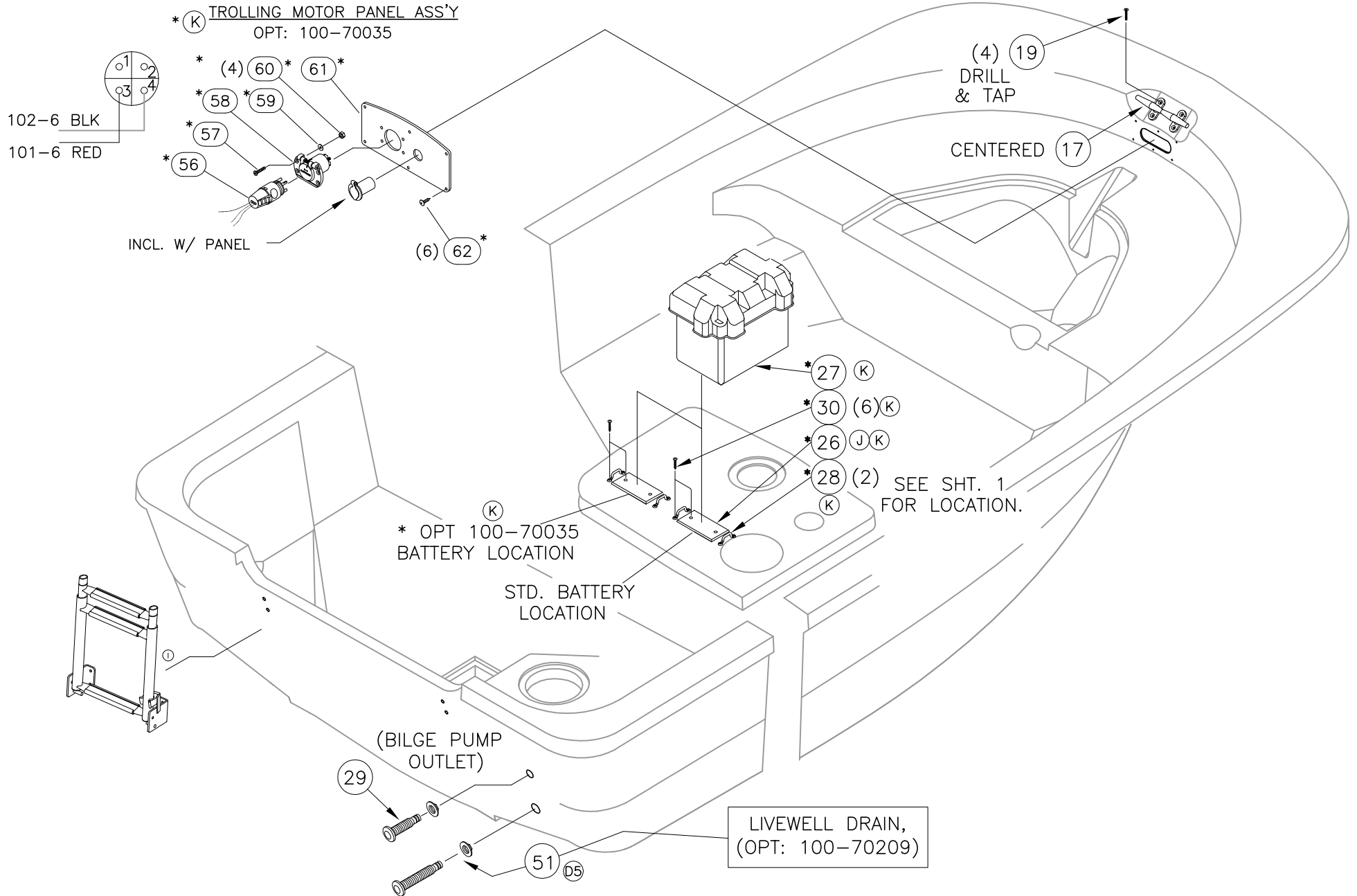
SHT. NO. 4 OF 7

THIS DOCUMENT IS THE PROPERTY OF BOSTON WHALER, INC. MFG. DEPT., EDGEWATER, FLORIDA. ALL RIGHTS ARE RESERVED. THIS DOCUMENT AND INFORMATION CONTAINED MUST NOT BE COPIED OR DISCLOSED TO OTHERS WITHOUT WRITTEN PERMISSION OF BOSTON WHALER, INC.

DWG. NO:
06151

REV.
S

CURRENT ECD
09116391



INTERPRET DIMENSIONS AND TOLERANCES PER ANSI Y 14.5 UNLESS OTHERWISE SPECIFIED DIMENSIONS ARE IN INCHES.
TOLERANCES: ANGLES = ± .5° .XXX = ± .010
.X = ± .1 X = ± 1/16
.XX = ± .03

DO NOT SCALE DRAWING

DRAWN: R.DURHAM DATE: 09/12/05 SCALE: NONE
DWG. TITLE: HULL OUTFIT & EQUIPMENT LOCATIONS

BOAT MODEL
150MT
INIT. REL. ECN NO:
050577

MOLD NO.
DWG. NO:
06151

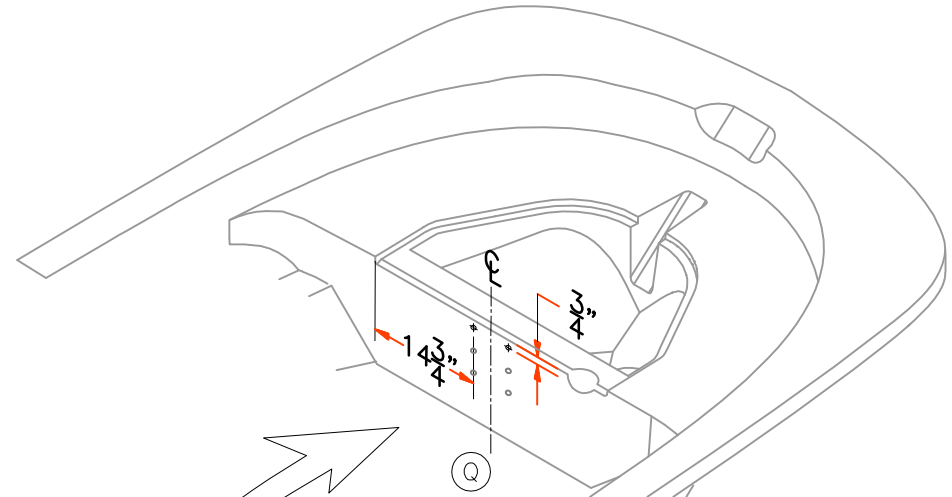
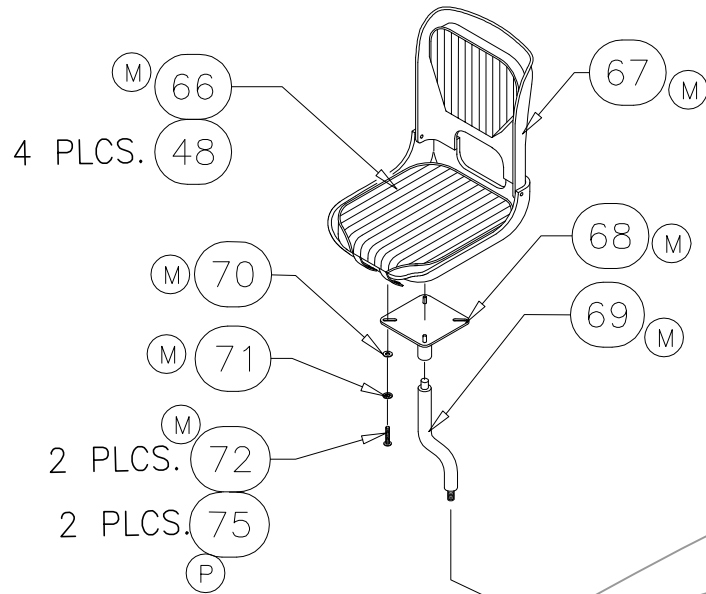
SHT. NO.
5 OF 7

THIS DOCUMENT IS THE PROPERTY OF BOSTON WHALER, INC. MFG. DEPT., EDGEWATER, FLORIDA. ALL RIGHTS ARE RESERVED. THIS DOCUMENT AND INFORMATION CONTAINED MUST NOT BE COPIED OR DISCLOSED TO OTHERS WITHOUT WRITTEN PERMISSION OF BOSTON WHALER, INC.

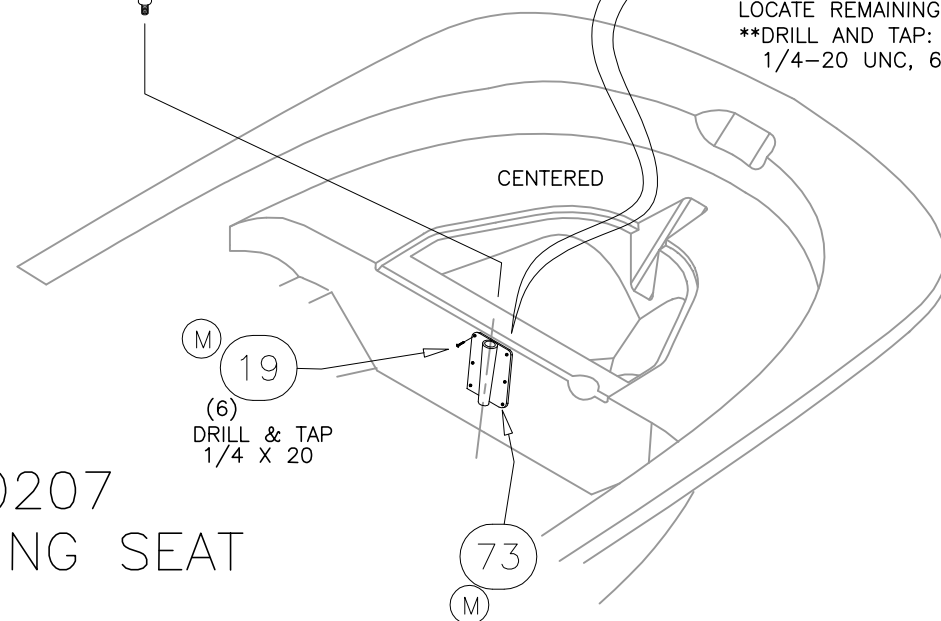
DWG. NO:
06151

REV.
S

CURRENT ECD
09116391



USE SPLASH TO LOCATE TWO HOLES (DIMENSIONED)
THEN USE BASE PLATE TO
LOCATE REMAINING HOLES
**DRILL AND TAP:
1/4-20 UNC, 6 PLCS FOR SEAT BASE



OPT: 100-70207
PEDESTAL FISHING SEAT



INTERPRET DIMENSIONS AND TOLERANCES PER ANSI Y 14.5
UNLESS OTHERWISE SPECIFIED DIMENSIONS ARE IN INCHES.
TOLERANCES: ANGLES = ± .5° .XXX = ± .010
.X = ± .1 X = ± 1/16
.XX = ± .03

DO NOT SCALE DRAWING

DRAWN: R.DURHAM DATE: 09/30/05 SCALE: NONE
DWG. TITLE:
HULL OUTFIT & EQUIPMENT LOCATIONS

BOAT MODEL
150MT
INIT. REL. ECN NO:
050577

MOLD NO.
DWG. NO:
06151

SHT. NO.
6 OF 7

THIS DOCUMENT IS THE PROPERTY OF BOSTON WHALER, INC. MFG. DEPT., EDGEWATER, FLORIDA. ALL RIGHTS ARE RESERVED. THIS DOCUMENT AND INFORMATION CONTAINED MUST NOT BE COPIED OR DISCLOSED TO OTHERS WITHOUT WRITTEN PERMISSION OF BOSTON WHALER, INC.

DWG. NO:
06151

REV.
S

CURRENT ECD
09116391

PARTS LIST

ITEM	QTY		U/M	DESCRIPTION	B.W.I. NO.
	STD	OPT			
(D) 1	1	-	EA.	EYE, BOW 1/2" X 6" SS	0995472
2	1	-	EA.	LIFT RING, BW-03 BOW EYE NUT 1/2" SS	1750950
3	5	-	EA.	WASHER, LOCK/SPLIT 1/2" SC	1326214
4	5	-	EA.	NUT, ACORN #1/2"-13 SC	1662402
(D)(L) 5	2	-	EA.	THRU-HULL, MARELON BW-06 SHORT FEMALE	1806032
(S)(D)(L) 6	1	-	EA.	THRU-HULL, MARELON BW-07 X-LONG MALE WHT	1877901
(G)(B) 7	1	-	EA.	SCREW, TAPPING #10A X 1.5" PPH SC	1010610
8	1	-	EA.	BOOT, CABLE 3" BLK	1043223
9	1	-	EA.	BOOT, CABLE RING 3" BLK	1043330
10	1	-	EA.	GROMMET, CABLE BOOT 3" BLK	1574839
(K) 11	3	-	EA.	GROMMET, VENT HOSE 3" BLK	1580810
12	1	-	EA.	PUMP, BILGE 500GPH SAHARA	1760963
(D) 13	7	-	EA.	SCREW, TAPPING #6A X 3/4" PTH SC	1010917
14	2	-	EA.	EYE, BOW 1/2" X 3-7/16" SS	0126557
15	1	-	EA.	COVER, HDPE BW150MT-06 BILGE SUMP	1811002
(F) 16	1	-	EA.	COVER, ABS BW140/160DA-99 7.75" POUR HOLE WHT	1210756
17	3	-	EA.	CLEAT, 8" 4-BOLT SS	0291658
18	1	-	EA.	CHOCK, BOW BW-03 W/BOLLARDS SS	1748820
(M)(G) 19	12	6	EA.	SCREW, MACHINE #1/4-20 X 1.25" PFH SC	1213289
(B) 20	2	-	EA.	HINGE, DOOR SS 1.5" X 3" THINLINE	1617323
(B) 21	1	-	EA.	ANCHOR LOCKER COVER SUB- ASSY.	09402
(H)(G)(D)(B) 22	12	6	EA.	SCREW, TAPPING #8A X 3/4" PFH SC	1008408
23	6	-	EA.	RIVET, POP/BLIND #3/16 X 5/8" ALUM	0189416
(R)(I)(C)(B) 24	1	-	EA.	LADDER, BW-06 SWIM 3-STEP TELESCOP W/CLIP	1833547
25	1	-	EA.	PLATE, DECK ACCESS 6" PRY-OUT SAND	1447432
(K)(J) 26	1	1	EA.	CLEAT, POLY BW-07 BATT BOX WHLR WHT	1878246
(K) 27	1	1	EA.	HOLDER, BATTERY GR24 FULLY ENCL	0650598
(K) 28	2	2	EA.	BRACKET, BW-97 BATT HOLDDOWN 1.25"CHR/PLT	1042837
29	1	-	EA.	THRU-HULL, PLAS 3/4" X 4 1/2" X 6" WHT	1815849
(K) 30	6	6	EA.	SCREW, TAPPING #8A X 1" POH SC	1213065
31	2	-	EA.	PLUG, BRASS 1" DRAIN TURN-TITE	0133371
32	1	-	EA.	DRAIN, 1" IMPACT W/BARB BLK	1041888
33	3	-	EA.	SCREW, MACHINE #1/4-20 X 2.5" PFH SC	1326156
(B) 34	7	-	EA.	SCREW, MACHINE #10-24 X 3/4" POH SC	1008440
(B) 35	6	-	EA.	NUT, BBL #10-24 X 3/8" FH	1040187
(G) 36	4	-	EA.	SCREW, TAPPING #10A X 1" POH SC	1008507
37	2	-	EA.	SCREW, MACHINE #6-32 X 1" PPH SC	1008671
38	.75	-	FT.	HOSE, CONDUIT/SPLIT 1/4" FLAME RETARDANT	1501808
(B) 39	1	-	EA.	NUT, BBL #10-24 X 3/8" TH CHR/BR	1040211
(B) 40	1	-	EA.	WASHER, FLAT #10 SC	1266751
41	-	1	EA.	VALVE, MARELON BALL 3/4" W/MUSHROOM THRU-HULL	1815493
42	2	-	EA.	CLAMP, HOSE #10 1/2"-1 1/8" SS .505	0263954
43	0	-	FT.	HOSE, WATER 3/4" BLK REINF PVC	1042100
(R) 44	4	-	EA.	SCREW, MACHINE #1/4-20 X 2" PPH SC	1008614
45	2	-	EA.	COVER, CLAMP END PROT 1/2"L X .045" X .465"RED	0830968
(N)(K)(D)(G) 46	9	-	EA.	RIVET, POP/BLIND #1/8 X 1/4" ALUM	1007855
(B) 47	2	-	EA.	SCREW TAPPING #10A X 1" PTH SC	1008739
(M)(B) 48	-	4	EA.	SNAP STUD, W/#8 X 3/8" PH BR/NI/SS	203786
(C) 49	-	1	EA.	STRAINER, MARELON 3/4" SCREEN ONLY	0995589

*
**

PARTS LIST

ITEM	QTY		U/M	DESCRIPTION	B.W.I. NO.
	STD	OPT			
(C) 50	-	4	EA.	SCREW, TAPPING #8A X 3/4" POH SC	1213057
51	-	1	EA.	THRU-HULL, PLAS 1 1/8" X 4.75" W/NUT WHT	1816729
(J) 52	-	1	EA.	CHOCK, BOW BW-08 REMVBL LIGHT W/BOLLARDS SS	1893298
(J) 53	-	1	EA.	LIGHT, NAV BASE ONLY STRN RND W/SS CAP	1798767
(J) 54	-	1	EA.	LIGHT, NAV COMBO BOW REMOV'BL SS 10"	1836209
(J) 55	-	3	EA.	SCREW, MACHINE #6-32 X 3/4" PTH SC	1130038
(J) 56	-	1	EA.	PLUG, 12V/24V (TROLLING MOTOR)	1713587
(J) 57	-	4	EA.	SCREW, MACHINE #6-32 X 1" PFH SC	1010172
(J) 58	-	1	EA.	RECEPTACLE, 12 TROLLING MOTOR OPT	0803155
(J) 59	-	4	EA.	WASHER, FLAT #10 SC	1260751
(J) 60	-	4	EA.	NUT, LOCK 6-32 SC	1009810
(J) 61	-	1	EA.	PANEL, BWMT-08 TROLLING 12/24V BLK	1893299
(J) 62	-	6	EA.	SCREW, TAPPING #8A X 5/8" PTH SC	1010925
(J) 63	-	1	PR.	CLIP, POLE STRG BLK - MAST LIGHT	0590646
(J) 64	-	2	EA.	SCREW, TAPPING #8A X 1" PTH SC	1008804
(S)(L) 65	-	1	EA.	THRU-HULL, MARELON BW-06 LONG MALE	1806030
(M) 66	-	1	EA.	CUSH, BW-DA/VT-05 FISHING SEAT WHT/GRY	1781443
(M) 67	-	1	EA.	SEAT, BW-97 FISHING WHT	1038876
(M) 68	-	1	EA.	BRACKET, BW130/150DA-97 MOUNT FISHING SEA	1043553
(M) 69	-	1	EA.	OFFSET EXT, BW-98 FISH PED	1076975
(M) 70	-	4	EA.	WASHER, FLAT #1/4" SC	1260769
(M) 71	-	4	EA.	WASHER, STAR #1/4 SS	1008929
(M) 72	-	2	EA.	SCREW, MACHINE #1/4-20 X 1" PPH SC	1008580
(M) 73	-	1	EA.	BASE PLATE, BW-09 VERTICAL FISH PED MOUN	1947982
(O) 74	-	1	EA.	WASHER, FLAT #1/2" SC	1260801
(P) 75	-	2	EA.	SCREW, MACHINE # 1/4-20 X 1.25 PPH SC	1260975
(R) 76	4	-	EA.	WASHER, LOCK/SPLIT 1/4" SC	1260595
(S) 77	1	-	EA.	THRU-HULL, MARELON BW-06 SHORT MALE	1806031

**06-08 MODELS USED 1042084

**06-08 MODELS USED 1042068



INTERPRET DIMENSIONS AND TOLERANCES PER ANSI Y 14.5 UNLESS OTHERWISE SPECIFIED DIMENSIONS ARE IN INCHES.
 TOLERANCES: ANGLES = ± .5° .XXX = ± .010
 .X = ± .1 X = ± 1/16
 .XX = ± .03 X = ± 1/16
 DO NOT SCALE DRAWING

DRAWN: R.DURHAM

DATE: 09/30/05

SCALE: NONE

BOAT MODEL

MOLD NO.

150MT

DWG. TITLE:

HULL OUTFIT & EQUIPMENT LOCATIONS

INIT. REL. ECN NO:

DWG. NO:

SHT. NO.

050577

06151

7 OF 7

THIS DOCUMENT IS THE PROPERTY OF BOSTON WHALER, INC. MFG. DEPT., EDGEWATER, FLORIDA. ALL RIGHTS ARE RESERVED. THIS DOCUMENT AND INFORMATION CONTAINED MUST NOT BE COPIED OR DISCLOSED TO OTHERS WITHOUT WRITTEN PERMISSION OF BOSTON WHALER, INC.

DWG. NO:
12101

REV.
G

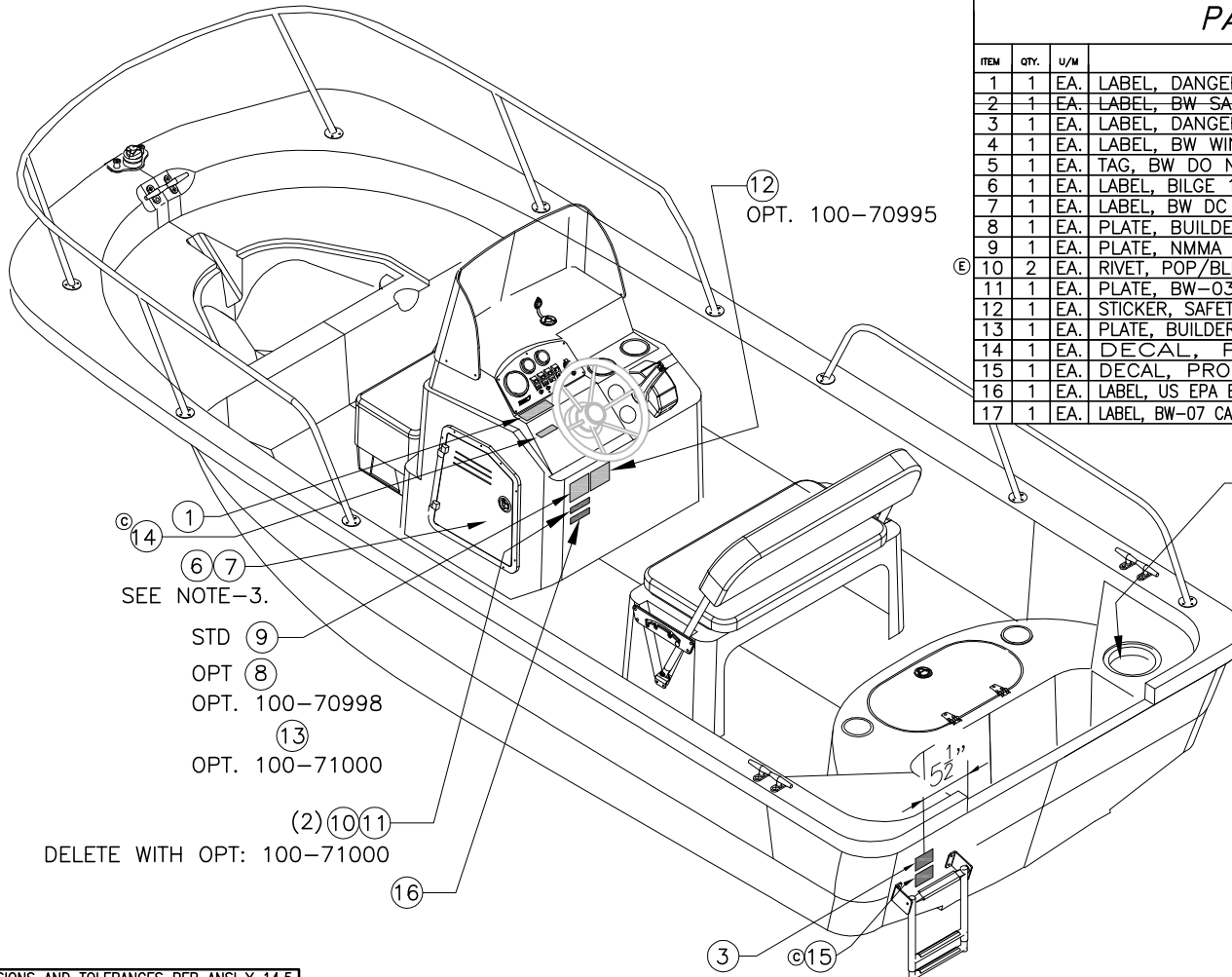
CURRENT ECD
10127445

1. CLEAN ALL AREAS WITH DENATURED ALCOHOL BEFORE APPLYING LABELS.
2. LABEL 4 SHALL BE INCLUDED IN OWNERS DOCUMENTS PACKET.
3. 6, 7 ARE ON BREAKER BOX IN CONSOLE UNDER HELM.

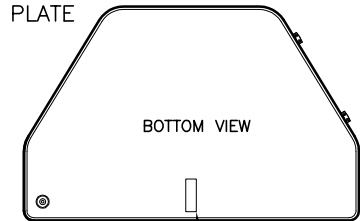
REVISIONS					
REV.	DESCR.	BY	DATE	APPVD.	ECN NO.
E	#10 WAS QTY. 6	BH	10/21/09	ES	09106283
F	ADDED ITEM #17	SG	11/16/09	ST	09116385
G	REPLACED PT# 1745123 WITH 2049266 ITEM #6	SG	12/07/10	ST	10127445

PARTS LIST

ITEM	QTY.	U/M	DESCRIPTION	B.W.I. NO.
1	1	EA.	LABEL, DANGER CO HELM 06	1811368
2	1	EA.	LABEL, BW SAFETY HI-PERF BOAT	1017136
3	1	EA.	LABEL, DANGER CO TRANSOM 06	1811367
4	1	EA.	LABEL, BW WINDSHIELD CARE	1016955
5	1	EA.	TAG, BW DO NOT PULL RIGGING	999755
6	1	EA.	LABEL, BILGE 1.5"X 5"POLY/VINYL	2049266
7	1	EA.	LABEL, BW DC MAIN BRAKER	1075282
8	1	EA.	PLATE, BUILDERS CE 06-BW150MT	1807947
9	1	EA.	PLATE, NMMA 06-BW150MT	1807946
10	2	EA.	RIVET, POP/BLIND #1/8 X 1/4" ALUM	1007855
11	1	EA.	PLATE, BW-03 MAX ENG WT 305LB/138KG	1735925
12	1	EA.	STICKER, SAFETY CANADIAN CAP BW150MT-06	1807948
13	1	EA.	PLATE, BUILDERS AU 07-BW150MT	1850570
14	1	EA.	DECAL, PROP LABEL DASH	1950698
15	1	EA.	DECAL, PROP TRNSM LABEL	1903624
16	1	EA.	LABEL, US EPA EVAP EMISSIONS BOSTON WHALER	1967297
17	1	EA.	LABEL, BW-07 CAUTION AVOID INJURY BOAT MOVMT	1836858



5 ATTACHED TO PULL STRING BEHIND ACCESS PLATE



14 1
SEE NOTE-3.
STD 9
OPT 8
OPT. 100-70998
13
OPT. 100-71000

(2) (10) (11)
DELETE WITH OPT: 100-71000

4" DOWN FROM RUBRAIL, CENTERED IN LADDER OR AS SHOWN WITHOUT (OPT: 100-70335)

INTERPRET DIMENSIONS AND TOLERANCES PER ANSI Y 14.5 UNLESS OTHERWISE SPECIFIED DIMENSIONS ARE IN INCHES.
TOLERANCES: ANGLES = ± .5° .XXX = ± .010
.X = ± .1 .XX = ± .03 X = ± 1/16
DO NOT SCALE DRAWING



CHECKED: E. SKAGGS	DATE: 9-28-05	DRAWN: HAL READ	DATE: 10/03/05	SCALE: NONE	BOAT MODEL	MOLD NO.
APPD: K. RANIERI	DATE: 10-03-05	DWG. TITLE:			150MT	
DESIGN: V. KNIGHT	DATE: 10-03-05	LABEL LOCATIONS			INIT. REL. ECN NO:	DWG. NO:
INT. ENG: MG	DATE: 10-05-05				050577	12101
					SHT. NO.	1 OF 1

THIS DOCUMENT IS THE PROPERTY OF BOSTON WHALER, INC. MFG. DEPT., EDGEWATER, FLORIDA. ALL RIGHTS ARE RESERVED. THIS DOCUMENT AND INFORMATION CONTAINED MUST NOT BE COPIED OR DISCLOSED TO OTHERS WITHOUT WRITTEN PERMISSION OF BOSTON WHALER, INC.

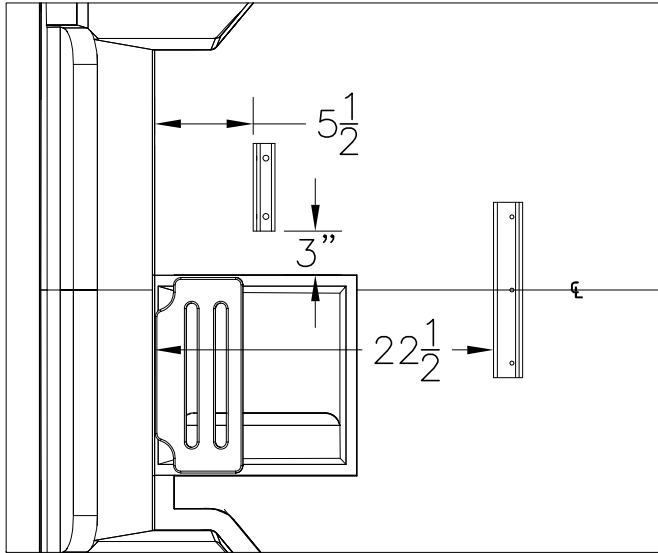
DWG. NO:
08406

REV.
-

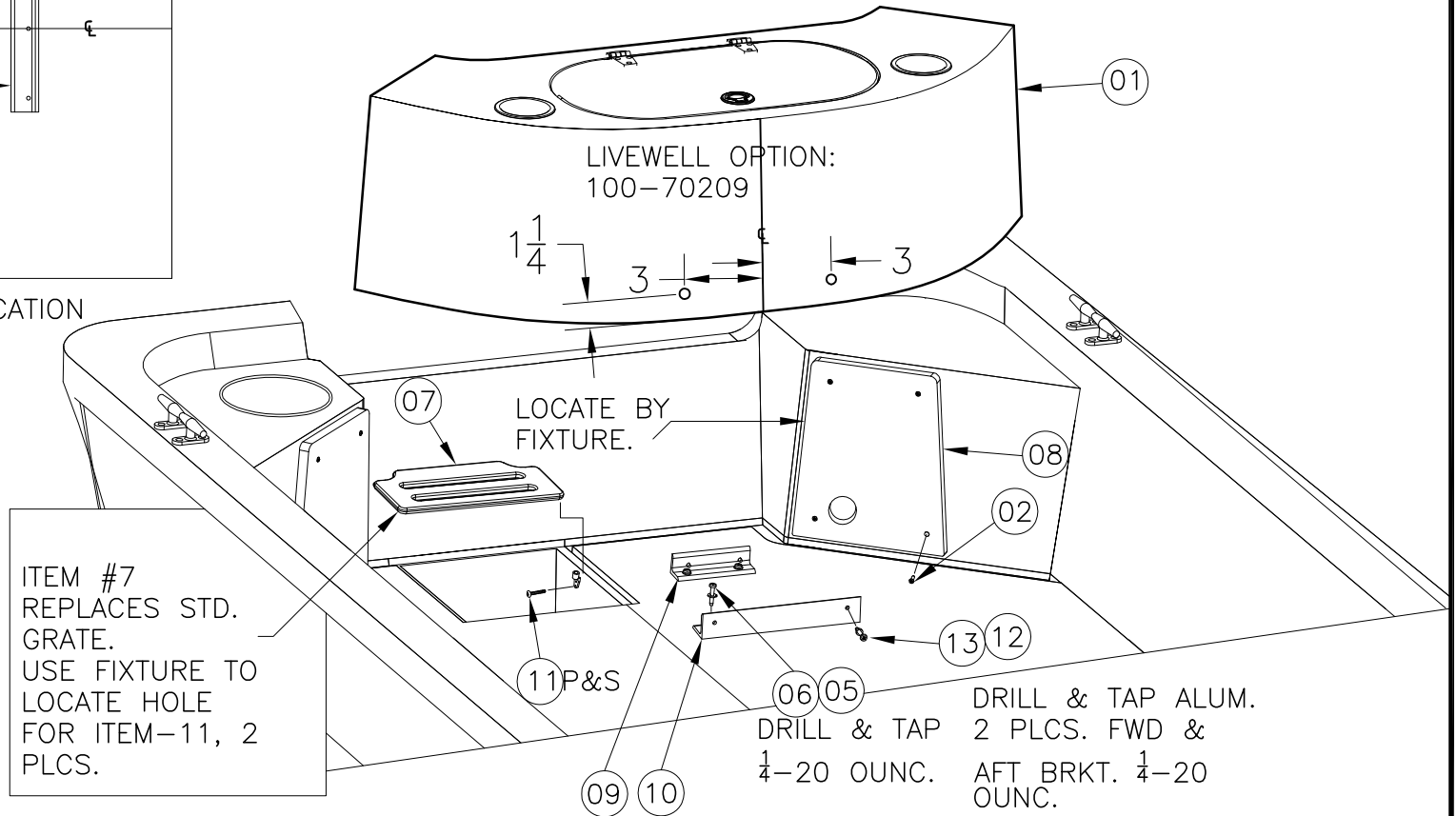
CURRENT ECD
050577

NOTE:
1. SEE DWG. 09419 FOR SUB-ASSY.

REVISIONS		BY	DATE	APPVD.	ECN NO.
REV.	DESCR.				



PLAN VIEW OF BRACKET LOCATION



INTERPRET DIMENSIONS AND TOLERANCES PER ANSI Y 14.5 UNLESS OTHERWISE SPECIFIED DIMENSIONS ARE IN INCHES.
 TOLERANCES: ANGLES = ± .5° .XXX = ± .010
 .X = ± .1
 .XX = ± .03 X/X = ± 1/16
 DO NOT SCALE DRAWING



CHECKED: RA	DATE: 10/20/05	DRAWN: J.HALPIN	DATE: 09-06-05	SCALE: NONE	BOAT MODEL 150MT	MOLD NO. 22K26300
APPD: KR	DATE: 10/20/05	DWG. TITLE: LIVWELL INSTALLATION			INIT. REL. ECN NO: 050577	DWG. NO: 08406
DESIGN: KR	DATE: 10/20/05					SHT. NO. 1 OF 2
INT. ENG: MG	DATE: 10/20/05					

THIS DOCUMENT IS THE PROPERTY OF BOSTON WHALER, INC. MFG. DEPT., EDGEWATER, FLORIDA. ALL RIGHTS ARE RESERVED. THIS DOCUMENT AND INFORMATION CONTAINED MUST NOT BE COPIED OR DISCLOSED TO OTHERS WITHOUT WRITTEN PERMISSION OF BOSTON WHALER, INC.

DWG. NO:
08406

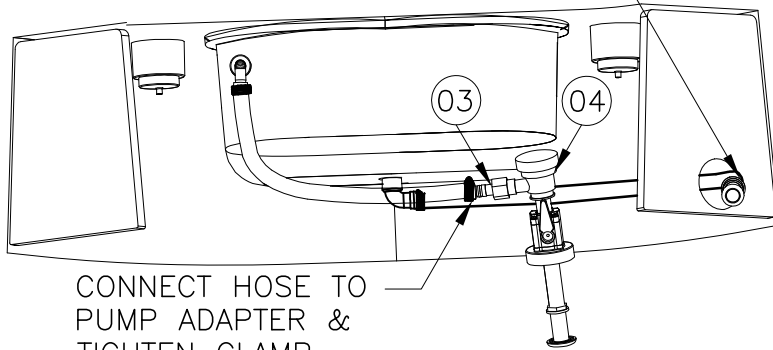
REV.
-

CURRENT ECD
050577

PARTS LIST

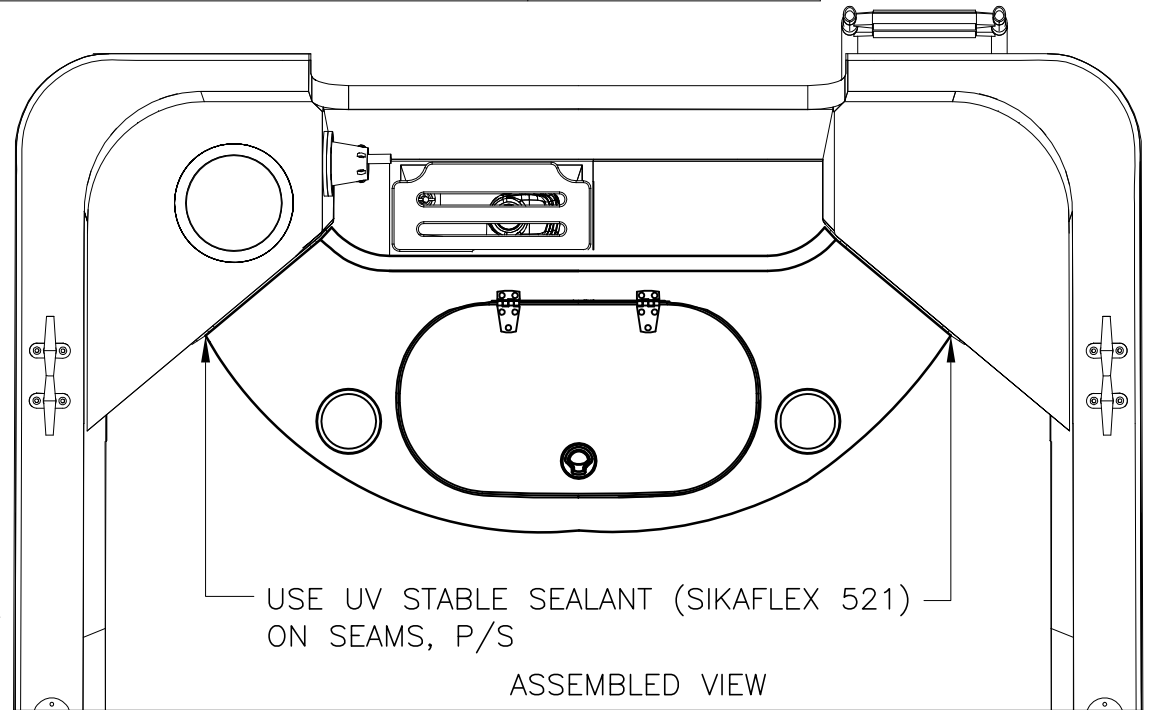
ITEM	QTY	U/M	DESCRIPTION	B.W.I. NO.
1	1	EA.	LIVEWELL SUB-ASSY.	09-419
2	8	EA.	SCREW, TAPPING #10A X 1" POH SC	1008507
3	1	EA.	FITTING, PVC STRAIGHT 3/4" BARB AERATOR	1799331
4	1	EA.	PUMP, LIVEWELL TSUNAMI T500	1815479
5	4	EA.	WASHER, FLAT #1/4" SC	1260769
6	4	EA.	SCREW, MACHINE #1/4-20 X 1.5" PPH SC	1008598
7	1	EA.	COVER, HDPE BW150MT-06 BILGE SUMP W/LIVEWELL	1811003
8	2	EA.	CLEAT, PROPNL BW150MT-06 LIVEWELL	1811781
9	1	EA.	BRACKET, ALUM BW280CQ-01 FUEL TANK	1523547
10	1	EA.	BRACKET, BW-97 ALUM 1/4" X 2" X 2" X 12"	1030428
11	2	EA.	SCREW, TAPPING #8A X 5/8" PTH SC	1010925
12	4	EA.	WASHER, FINISH #12 SS	0958868
13	4	EA.	SCREW, MACH #1/4-20 x 1" PFH SC	1009950

CONNECT HOSE TO THRU-HULL & TIGHTEN CLAMP.



CONNECT HOSE TO PUMP ADAPTER & TIGHTEN CLAMP.

HOSE ROUTING VIEW FROM TRANSOM LOOKING FWD.



USE UV STABLE SEALANT (SIKAFLEX 521) ON SEAMS, P/S

ASSEMBLED VIEW



INTERPRET DIMENSIONS AND TOLERANCES PER ANSI Y 14.5 UNLESS OTHERWISE SPECIFIED DIMENSIONS ARE IN INCHES.
TOLERANCES: ANGLES = ± .5° .XXX = ± .010
.X = ± .1
.XX = ± .03 X/X = ± 1/16
DO NOT SCALE DRAWING

DRAWN: J. HALPIN DATE: 09-06-05 SCALE: NONE

DWG. TITLE: LIVEWELL INSTALLATION

BOAT MODEL
150MT

MOLD NO.
22K26300

INIT. REL. ECN NO:
050577

DWG. NO:
08406

SHT. NO.
2 OF 2

THIS DOCUMENT IS THE PROPERTY OF BOSTON WHALER, INC. MFG. DEPT., EDGEWATER, FLORIDA. ALL RIGHTS ARE RESERVED. THIS DOCUMENT AND INFORMATION CONTAINED MUST NOT BE COPIED OR DISCLOSED TO OTHERS WITHOUT WRITTEN PERMISSION OF BOSTON WHALER, INC.

DWG. NO:
09419

REV.
E

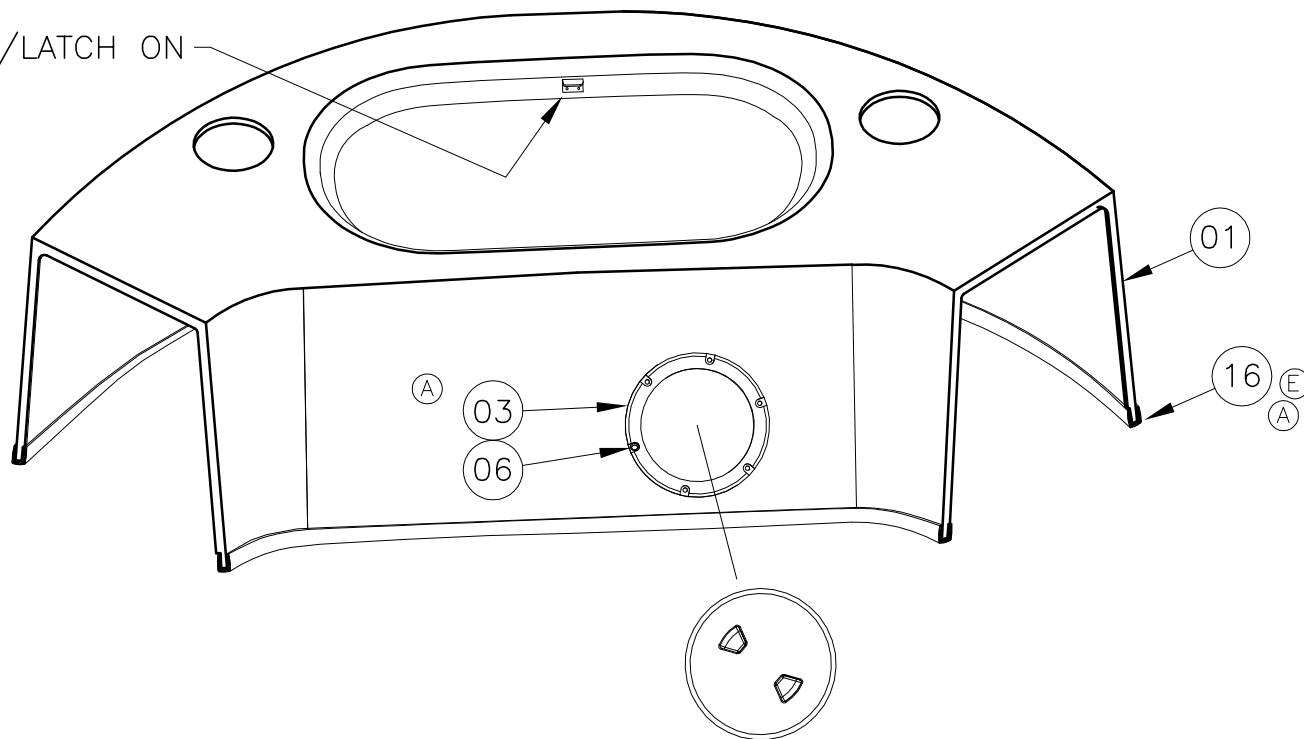
CURRENT ECD
10016463

NOTES:

1. REF. DWG. 01251 FOR HOSE CUT LENGTHS.
2. REF. DWG. 08406 FOR LIVEWELL INSTALLATION.
3. REF. DWG. 16154 FOR LIVEWELL BUCKET CUTOUTS.
4. SEE DWG. 16168 FOR LIVEWELL BASE CUTOUTS.
5. REF. DWG. 05168 FOR LIVEWELL BASE LAMO DETAILS.

REVISIONS					
REV.	DESCR.	BY	DATE	APPVD.	ECN NO.
A	#3 WAS 1613975. #6 WAS QTY. 8. ADDED #16. CHANGED VIEW OF AERATOR. CHANGED TEXT FROM BLACK SILICONE TO WHITE.	JFH	10-17-05	VPK	050577
B	#17 ADDED; #15 WAS #1008507; #2 WAS QTY. 2; PORT DRINKHOLDER NOTE ADDED; FLOW DIRECTION NOTE ADDED AT LIVEWELL INLET AERATOR.	RD	10/19/05	KR	050577
C	# 2 (MRP 1727419) DELETED; DRINKHOLDER NOTE CHANGED.	RD	10/20/05	KR	050577
D	CHANGED MEASUREMENT AND ADDED PT#1833121,1008390 TO DWG	TJ	1/13/09	AF	08115614
E	ITEM # 16 WAS PN# 1757260	SLJ	02/01/10	ST	10016463

LATCH STRIKE, MATCH UP W/LATCH ON LIVEWELL COVER
INSTALL USING (17) (B)

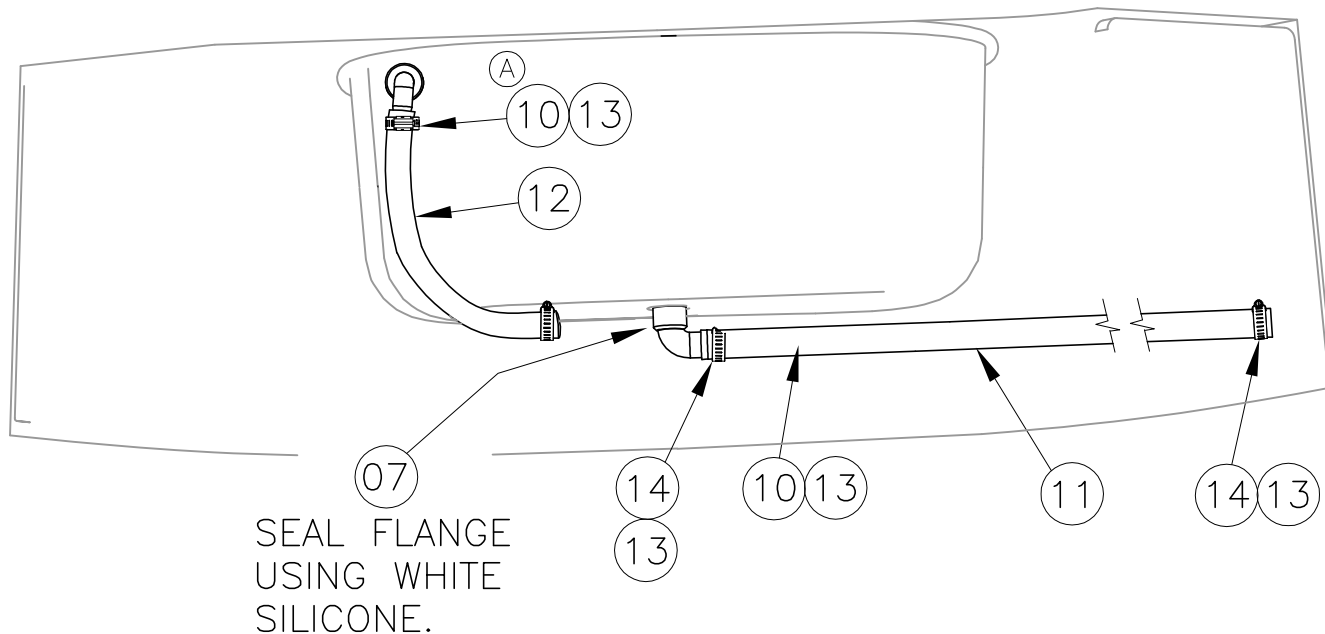


OPT. LIVEWELL 100-70209

INTERPRET DIMENSIONS AND TOLERANCES PER ANSI Y 14.5 UNLESS OTHERWISE SPECIFIED DIMENSIONS ARE IN INCHES.
TOLERANCES: ANGLES = ± .5° .XXX = ± .010
.X = ± .1 .XX = ± .03 X = ± 1/16
DO NOT SCALE DRAWING



CHECKED: R.AVILA	DATE: 9/23/05	DRAWN: J.HALPIN	DATE: 09-09-05	SCALE: NONE	BOAT MODEL	MOLD NO.
APPD: K.RANIERI	DATE: 9/23/05	DWG. TITLE:		150MT06	22K26300	
DESIGN: V.KNIGHT	DATE: 9/23/05	LIVEWELL SUB-ASSY.		INIT. REL. ECN NO:	DWG. NO:	SHT. NO.
INT. ENG: M.GATICA	DATE: 9/23/05			050577	09419	1 OF 4



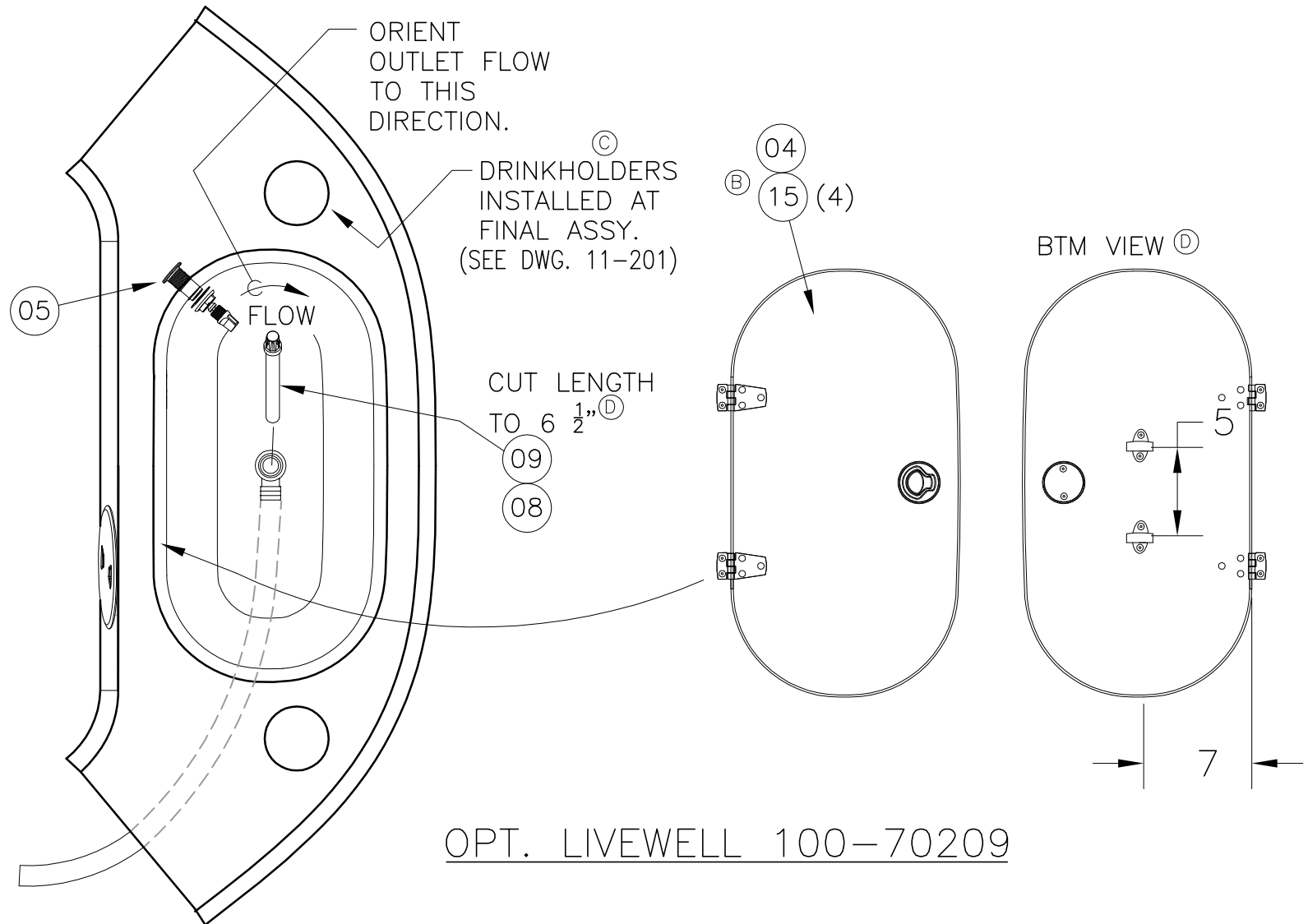
VIEW ON BACK OF LIVEWELL BASE
(PARTIAL CUTAWAY VIEW)
OPT. LIVEWELL 100-70209

THIS DOCUMENT IS THE PROPERTY OF BOSTON WHALER, INC. MFG. DEPT., EDGEWATER, FLORIDA. ALL RIGHTS ARE RESERVED. THIS DOCUMENT AND INFORMATION CONTAINED MUST NOT BE COPIED OR DISCLOSED TO OTHERS WITHOUT WRITTEN PERMISSION OF BOSTON WHALER, INC.

DWG. NO:
09419

REV.
E

CURRENT ECD
10016463



PARTS LIST

ITEM	QTY	U/M	DESCRIPTION	B.W.I. NO.
	1	EA.	FIBERGLASS PART, LIVEWELL BASE	22K26300
ⓐⓑ	2	1 EA.	DRINKHOLDR, PLAS W/ DRAIN DEEP XLG SZ BLK	1727419
ⓐ	3	EA.	ACCESS PLATE, POLYPROP TWIST-OUT 5" WHT BWI	1016153
	4	EA.	LID, HDPE BW150MT-06 LIVEWELL SEAFM	1809673
	5	EA.	BAITWELL, AERATOR SPRAY HEAD ADJ	858944
ⓐ	6	EA.	RIVET, POP/BLIND #3/16 X 5/8" ALUM	189415
	7	EA.	THRU-HULL, PLAS 1 1/8" TUBE X 90DEG WHT	1043371
	8	EA.	DRAIN, SCREEN ONLY 7/8" X 12"	1043348
	9	EA.	DRAIN, STANDPIPE ONLY 7/8" X 12"	1583053
	10	EA.	CLAMP, HOSE #10 1/2"-1 1/8" SS .505	263954
	11	FT.	HOSE, WATER 1 1/8" BLK	1042076
	12	FT.	HOSE, WATER 3/4" BLK REINF PVC	1042100
	13	EA.	COVER, CLAMP END PROT 1/2"L X .045" X .465" RED	830968
	14	EA.	CLAMP, HOSE #16 3/4"-1.5" SS .505	256685
ⓑ	15	EA.	SCREW, TAPPING #8A X 1" POH SC	1213065
ⓐⓐ	16	7.125 FT.	TRIM, EDGE WHT FLEX U-TRIM	1020965
ⓑ	17	EA.	SCREW, TAPPING #8A X 5/8" PTH SC	1010925
Ⓓ	18	EA.	CLIP, PLAS HOLDING 7/8"-1 1/8" WHT	1833121
Ⓓ	19	EA.	SCREW, TAPPING #8A X 1/2" PFH SC	1008390



INTERPRET DIMENSIONS AND TOLERANCES PER ANSI Y 14.5 UNLESS OTHERWISE SPECIFIED DIMENSIONS ARE IN INCHES.
 TOLERANCES: ANGLES = ± .5° .XXX = ± .010
 .X = ± .1 X = ± 1/16
 .XX = ± .03 X = ± 1/16
 DO NOT SCALE DRAWING

DRAWN: J. HALPIN DATE: 09-09-05 SCALE: NONE
 DWG. TITLE:
 LIVEWELL SUB-ASSY.

BOAT MODEL 150MT06	MOLD NO. 22K26300
INIT. REL. ECN NO: 050577	DWG. NO: 09419
SHT. NO. 4 OF 4	

THIS DOCUMENT IS THE PROPERTY OF BOSTON WHALER, INC. MFG. DEPT., EDGEWATER, FLORIDA. ALL RIGHTS ARE RESERVED. THIS DOCUMENT AND INFORMATION CONTAINED MUST NOT BE COPIED OR DISCLOSED TO OTHERS WITHOUT WRITTEN PERMISSION OF BOSTON WHALER, INC.

DWG. NO:
09251

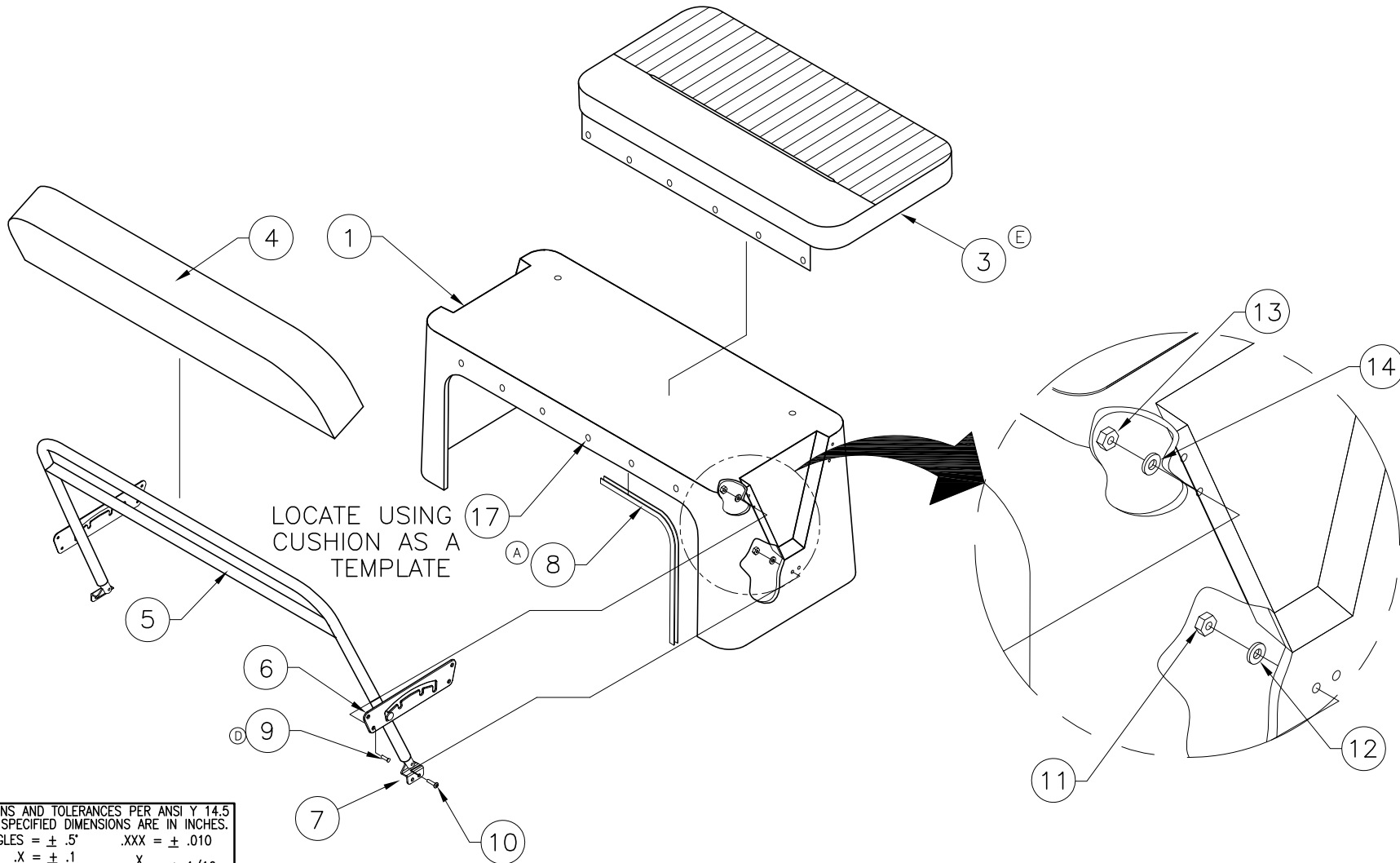
REV.
E

CURRENT ECD
060386

NOTES:

1. SEE DWG. 16-111 FOR ALL CUTOUT INFO.
2. SEE DWG. 05-111 FOR LAMO DETAILS.
3. SEE DWG. 06-151 FOR HULL OUTFIT DETAILS.

REVISIONS					
REV.	DESCR.	BY	DATE	APPVD.	ECN NO.
A	#8 QTY. WAS 12FT.; DELETED NOTE PG. 2	RD	9/7/05	VPK	050577
B	ADDED SECTION VIEW TO SHOW BRACKET DIM.	JFH	10/04/05	VPK	050577
C	UPDATE SECTION VIEW SHOWING BRACKET.	HJR	10/17/05	VPK	050577
D	CHANGE PN# & DESCRIPTION ITEMS 9 & 16	SLJ	12/09/05	ME	051116
E	MYE 2007: ITEM 3 PART # WAS: 1781381	RD	4/10/06	MG	060386



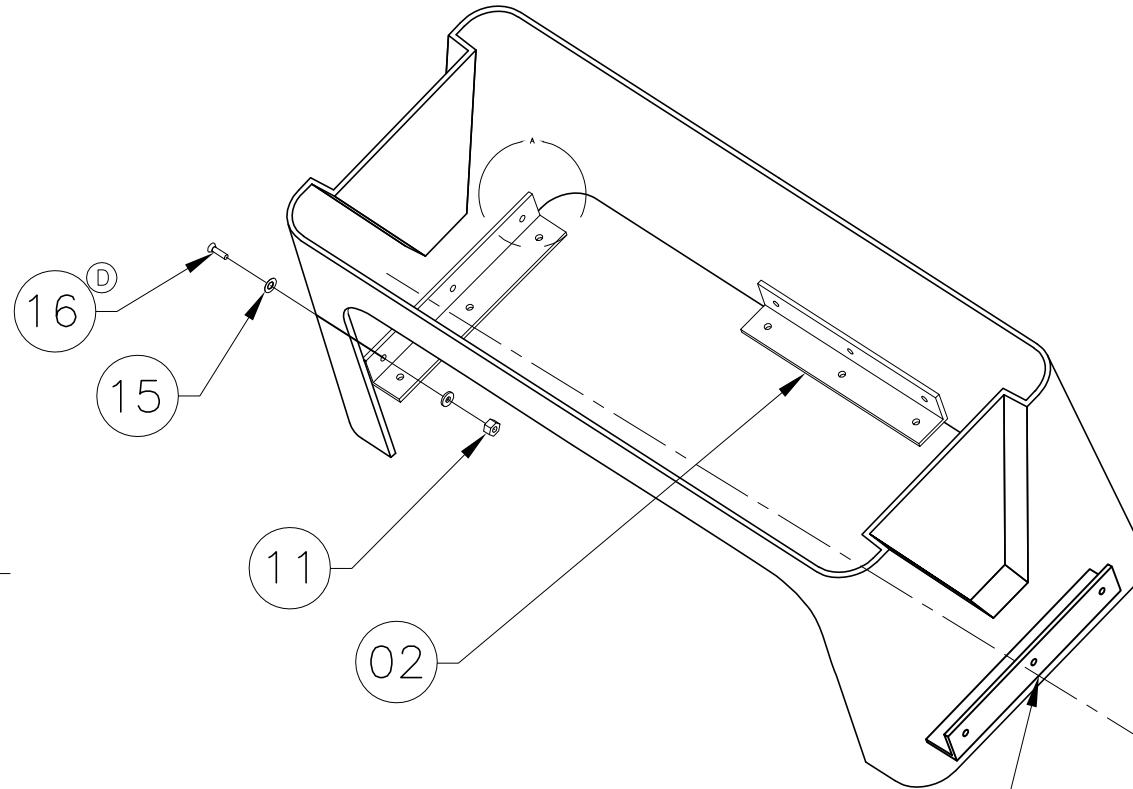
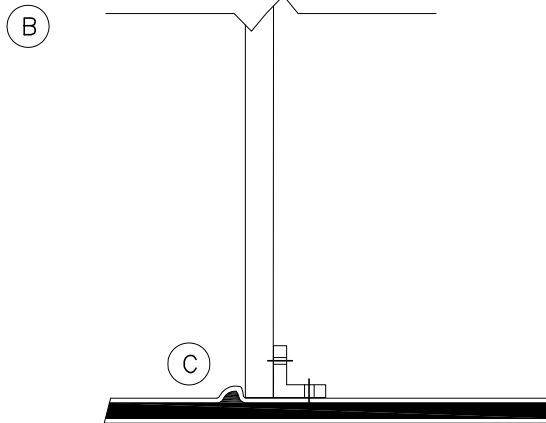
INTERPRET DIMENSIONS AND TOLERANCES PER ANSI Y 14.5 UNLESS OTHERWISE SPECIFIED DIMENSIONS ARE IN INCHES.
 TOLERANCES: ANGLES = ± .5° .XXX = ± .010
 .X = ± .1 X = ± 1/16
 .XX = ± .03 X = ± 1/16
 DO NOT SCALE DRAWING



CHECKED: H. WOOD	DATE: 9/6/05	DRAWN: R.DURHAM	DATE: 8/31/05	SCALE: NONE	BOAT MODEL	MOLD NO.
APPD: K. RANIERI	DATE: 9/6/05	DWG. TITLE:		150MT		
DESIGN: V. KNIGHT	DATE: 9/6/05	REVERSIBLE PILOT SEAT SUB-ASSY.		INIT. REL. ECN NO:	DWG. NO:	SHT. NO.
INT. ENG: M. GATICA	DATE: 9/9/05			050577	09251	1 of 3

TOP REMOVED FOR CLARITY

SECTION VIEW OF
 REV. SEAT WITH
 BRACKET
 DIMENSIONS.



LOCATE ALL BRACKETS
 ON CENTERLINE OF
 SEAT BASE.

THIS DOCUMENT IS THE PROPERTY OF BOSTON WHALER, INC. MFG. DEPT., EDGEWATER, FLORIDA. ALL RIGHTS ARE RESERVED. THIS DOCUMENT AND INFORMATION CONTAINED MUST NOT BE COPIED OR DISCLOSED TO OTHERS WITHOUT WRITTEN PERMISSION OF BOSTON WHALER, INC.

DWG. NO:
09251

REV.
E

CURRENT ECD
060386

BILL OF MATERIAL

ITEM	QTY.	U/M	DESCRIPTION	B.W.I. NO.	
	01	1	EA	FIBERGLASS PART, REVERS. PILOT SEAT	22K17300
	02	3	EA	BRACKET, BW-97 ALUM 1/4" x 2" x 2" x 12"	1030428
(E)	03	1	EA	CUSH, BW150/170MT-07 REV SEAT BASE	1838162
	04	1	EA	CUSH, BW17MTK-05 REV SEAT B/R	1781385
	05	1	EA	SUPPORT, SS BWDA-99 REV SEAT W/B/R	1187053
	06	2	EA	PLATE, BWDA-01 REV SEAT SS	1566272
	07	2	EA	BRACKET, BWDA-01 REV SEAT SS/DELTRIN	1566280
(A)	08	5	FT	TRIM, EDGE WHITE FLEX U-TRIM	1020965
(D)	09	8	EA	SCREW, MACHINE #10-24 X 7/8" POH SC	1008457
	10	4	EA	SCREW, MACH 1/4-20 x 1" PPH SC	1008580
	11	13	EA	NUT, LOCK 1/4-20 SC STD PATT	1009786
	12	4	EA	WASHER, FLAT 1/4" SC	1260769
	13	8	EA	NUT, HEX NYLON LOCK #10-24 SC	1007772
	14	8	EA	WASHER, FLAT #10 SC	1260751
	15	9	EA	WASHER, FINISH #12 SS	0958868
(D)	16	9	EA	SCREW, MACHINE #1/4-20 X 1.25" PFH SC	1213289
	17	8	EA	SNAP STUD, W/#8 X 3/8" PH BR/NI/SS	203786



INTERPRET DIMENSIONS AND TOLERANCES PER ANSI Y 14.5 UNLESS OTHERWISE SPECIFIED DIMENSIONS ARE IN INCHES.
 TOLERANCES: ANGLES = ± .5° .XXX = ± .010
 .X = ± .1 X = ± 1/16
 .XX = ± .03

DO NOT SCALE DRAWING

DRAWN: R.DURHAM

DATE: 8/31/05

SCALE: NONE

BOAT MODEL

MOLD NO.

150MT

DWG. TITLE:

REVERSIBLE PILOT SEAT SUB-ASSY.

INIT. REL. ECN NO:

DWG. NO:

SHT. NO.

050577

09251

3 of 3

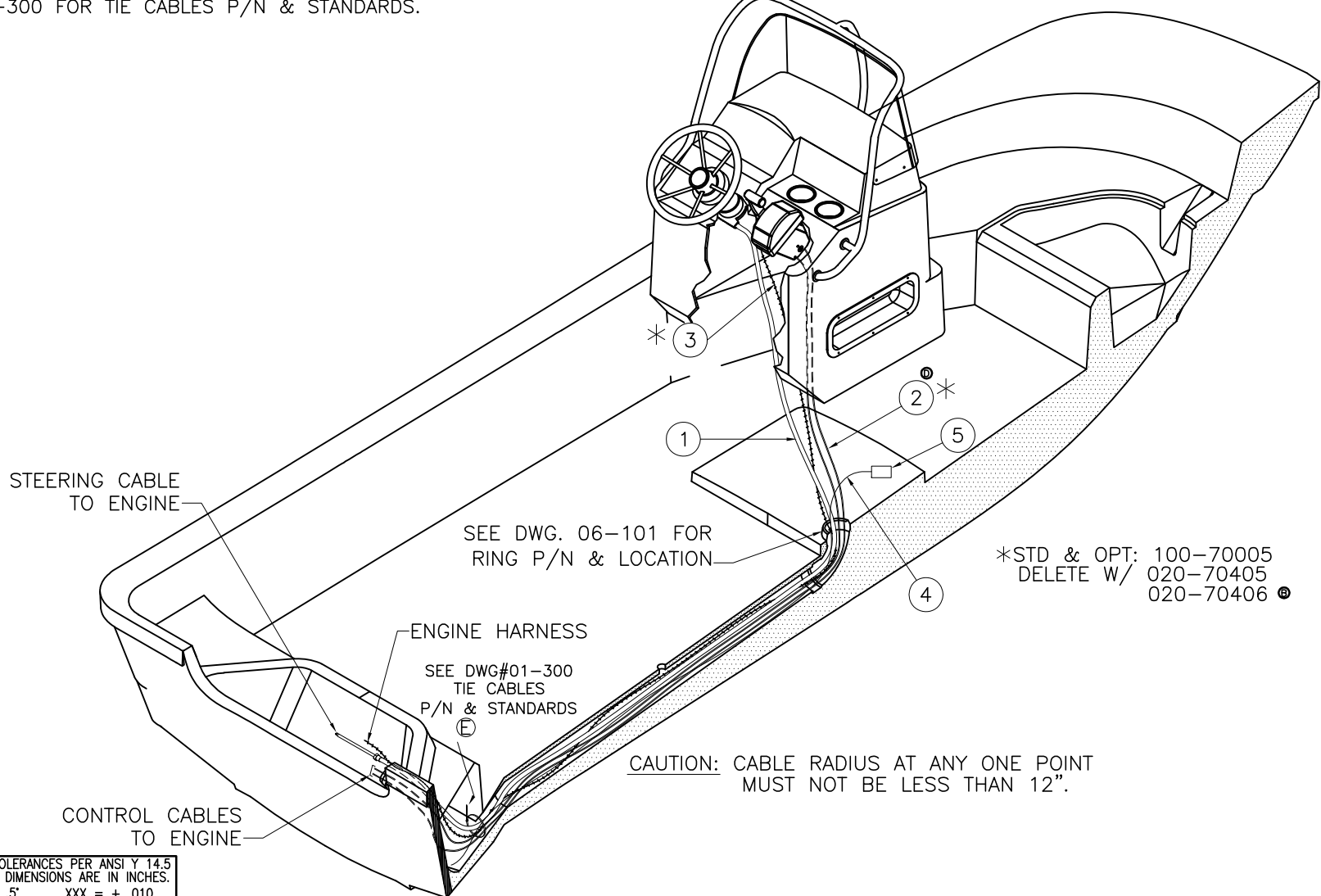
THIS DOCUMENT IS THE PROPERTY OF BOSTON WHALER, INC. MFG. DEPT., EDGEWATER, FLORIDA. ALL RIGHTS ARE RESERVED. THIS DOCUMENT AND INFORMATION CONTAINED MUST NOT BE COPIED OR DISCLOSED TO OTHERS WITHOUT WRITTEN PERMISSION OF BOSTON WHALER, INC.

DWG. NO:	REV.	CURRENT ECD
10401	E	08065289

NOTES:

1. CONNECT CABLES IN ACCORDANCE W/MANUFACTURERS INSTALLATION SHEET.
2. CABLES TO BE SECURED SEPARATELY FROM ELECTRICAL & FUEL LINES.
3. ROUTE CABLES & SMALL HOSES IN A MANNER TO AVOID TWIST OR KINKINGS.
4. MIN. BEND RADIUS FOR CONTROL CABLES IS 12".
5. SEE DWG. 01-300 FOR TIE CABLES P/N & STANDARDS.

REVISIONS					
REV.	DESCR.	BY	DATE	APPVD.	ECN NO.
B	#2 WAS 1757747	RA	10-19-05	VK	050577
C	ADDED OPT 020-70406 TO THE DELETE W/ OPT NOTE, SHEET 1	SLJ	08/25/06	AVM	0606167
D	CHANGED PT#1759686 TO 1804040	TKJ	2/13/08	AF	08024913
E	REMOVE ITEM 6 AND ADD NOTES TO REFER DWG#01-300	JF	06/11/08	AF	08065289



*STD & OPT: 100-70005
 DELETE W/ 020-70405
 020-70406

INTERPRET DIMENSIONS AND TOLERANCES PER ANSI Y 14.5 UNLESS OTHERWISE SPECIFIED DIMENSIONS ARE IN INCHES.
 TOLERANCES: ANGLES = ± .5' .XXX = ± .010
 .X = ± .1 .XX = ± .03
 X = ± 1/16
 DO NOT SCALE DRAWING



CHECKED: R.AVILA	DATE: 9/09/05	DRAWN: M.ZAFFUTO	DATE: 08/31/05	SCALE: NONE	BOAT MODEL	MOLD NO.
APPD: K.RANIERI	DATE: 9/09/05	DWG. TITLE:		150MT		
DESIGN: V.KNIGHT	DATE: 9/09/05	STEERING & THROTTLE CABLE INSTALLATION			INIT. REL. ECN NO:	DWG. NO:
INT. ENG: M.GATICA	DATE: 9/09/05				050577	10401
					SHT. NO.	1 OF 2

THIS DOCUMENT IS THE PROPERTY OF BOSTON WHALER, INC. MFG. DEPT., EDGEWATER, FLORIDA. ALL RIGHTS ARE RESERVED. THIS DOCUMENT AND INFORMATION CONTAINED MUST NOT BE COPIED OR DISCLOSED TO OTHERS WITHOUT WRITTEN PERMISSION OF BOSTON WHALER, INC.

DWG. NO:
10401

REV.
E

CURRENT ECD
08065289

Parts List

ⒹⒷⒶ

Ⓔ

ITEM	QTY	U/M	DESCRIPTION	B.W.I. NO.
1	1	EA.	STEERING, CABLE NFB W/ENDS 14'	0704239
2	2	EA.	CABLE, CNTRL MERC GEN II PREMIUM 15'	1804040
3	1	EA.	HARNESS, ENG MERC S-CRFT 14 PIN 20'	1802105
4	15	FT.	CORD, NYLON 1/8" WHT	1033372
5	1	EA.	TAG, BW DO NOT PULL RIGGING	0999755
6	1	EA.	TIE, CABLE 11" MED NYLON BLK	0157321



INTERPRET DIMENSIONS AND TOLERANCES PER ANSI Y 14.5 UNLESS OTHERWISE SPECIFIED DIMENSIONS ARE IN INCHES.
 TOLERANCES: ANGLES = ± .5' .XXX = ± .010
 .X = ± .1 .XX = ± .03 X/X = ± 1/16
 DO NOT SCALE DRAWING

DRAWN: M.ZAFFUTO

DATE: 08/31/05

SCALE: NONE

BOAT MODEL
150MT

MOLD NO.

DWG. TITLE:

STEERING & THROTTLE CABLE INSTALLATION

INIT. REL. ECN NO:
050577

DWG. NO:
10401

SHT. NO.
2 of 2

THIS DOCUMENT IS THE PROPERTY OF BOSTON WHALER, INC. MFG. DEPT., EDGEWATER, FLORIDA. ALL RIGHTS ARE RESERVED. THIS DOCUMENT AND INFORMATION CONTAINED MUST NOT BE COPIED OR DISCLOSED TO OTHERS WITHOUT WRITTEN PERMISSION OF BOSTON WHALER, INC.

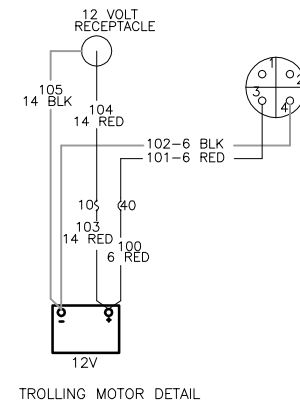
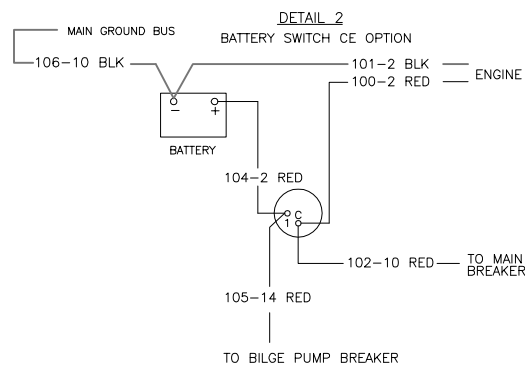
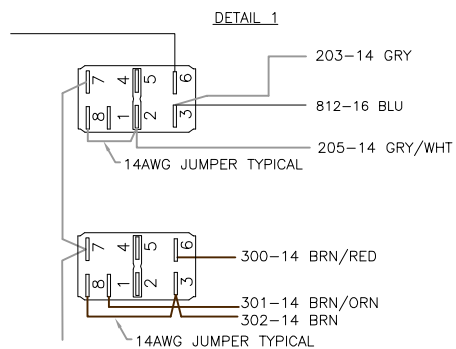
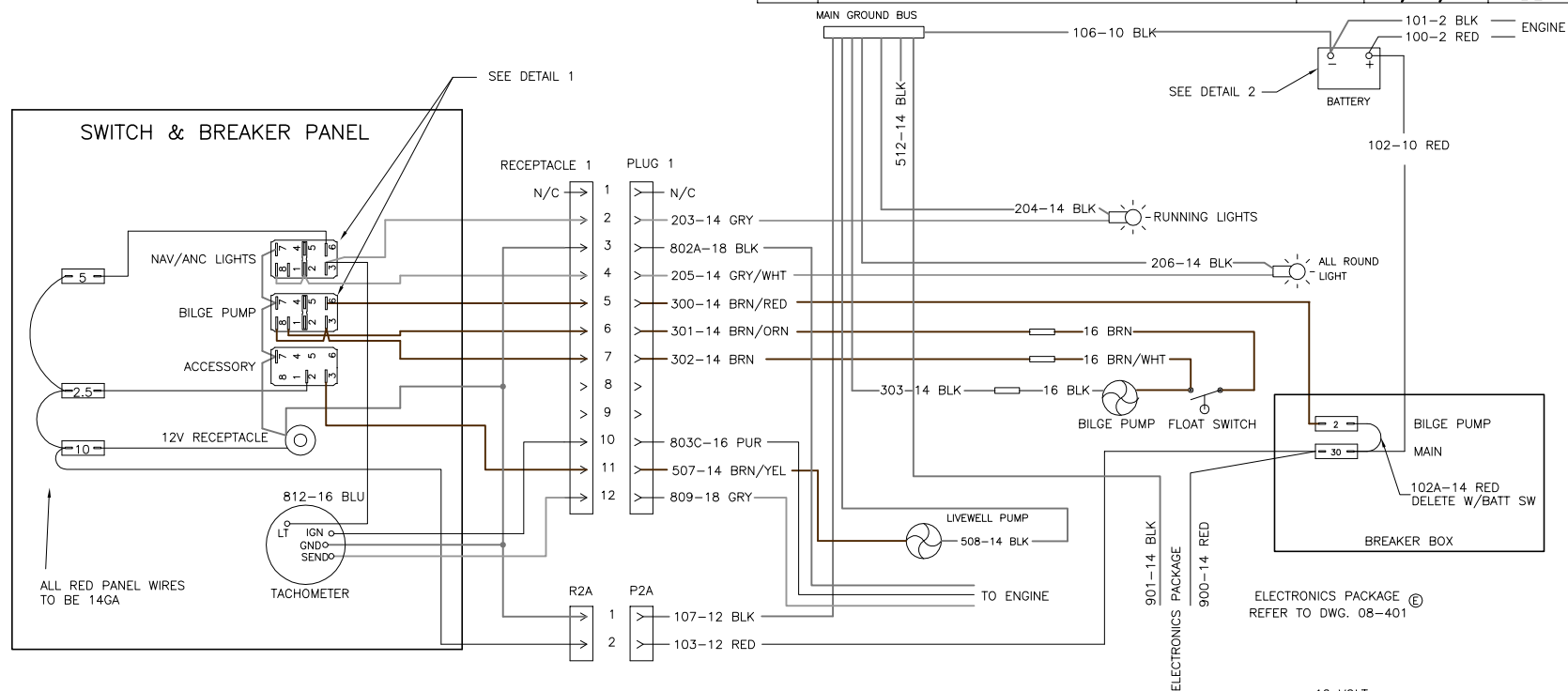
DWG. NO:
07401

REV.
E

CURRENT ECD
09035867

- REF PANEL DRAWING FOR CONSTRUCTION DETAILS.
- ALL BREAKER TO BREAKER JUMPERS AND BREAKER TO SWITCH JUMPERS ARE 14 AWG RED

REVISIONS					
REV.	DESCR.	BY	DATE	APPVD.	ECN NO.
A	MOVED TACH LT WIRE TO ANC LT SWITCH	DHOY	9/21/05	VPK	050362
B	ADDED WIRE COLORS ON BILGE SIDE OF SPLC	DHOY	10/19/05	VPK	050362
C	MYE 08: ADDED 12V/ PANEL WIRING DETAIL	SWH	5/17/07	RA	07034092
D	ADD P2A:R2A, CHNG WIRE 103,107 TO 12 GA.	TCM	02/16/09		
E	08-401 WAS 08-41-01	SBL	04/28/09	BL	09035867



INTERPRET DIMENSIONS AND TOLERANCES PER ANSI Y 14.5 UNLESS OTHERWISE SPECIFIED DIMENSIONS ARE IN INCHES.
 TOLERANCES: ANGLES = ± .5° .XXX = ± .010
 .X = ± .1 .XX = ± .03 X = ± 1/16
 DO NOT SCALE DRAWING



CHECKED: RA	DATE: 09/20/05	DRAWN: D HOY	DATE: 9/19/05	SCALE: NONE	BOAT MODEL	MOLD NO.
APPD: KR	DATE: 09/20/05	DWG. TITLE:			150MT	
DESIGN: VPK	DATE: 09/20/05	WIRING DIAGRAM, BW150MT-06			INIT. REL. ECN NO:	DWG. NO:
INT. ENG: MG	DATE: 09/20/05				050362	07401
					SHT. NO.	
					1	OF 1